

RADIUS AND CAPACITIES		LIEBHERR 316 EC-H 12 Litronic®										2 PART LINE				
HOOK RADIUS	MODE	MAXIMUM CAPACITY @ RADIUS	HOOK RADIUS	ft.	72	82	92	102	112	121	131	148	164	180	197	213
213 ft. 65 m	LM1	26,460 lbs - 76 ft. 12,000 kgs - 23.3 m	CAPACITY	lbs	26,460	24,450	21,520	19,160	17,220	15,590	14,220	12,320	10,820	9,610	8,580	7,720
				kgs	12,000	11,090	9,760	8,690	7,810	7,070	6,450	5,590	4,910	4,360	3,890	3,500
213 ft. 65 m	LM2	26,460 lbs - 88 ft. 12,000 kgs - 26.7 m	CAPACITY	lbs	26,460	26,460	25,130	22,400	20,170	18,320	16,730	14,570	12,830	11,420	10,250	9,260
				kgs	12,000	12,000	11,400	10,160	9,150	8,310	7,590	6,610	5,820	5,180	4,650	4,200

RADIUS AND CAPACITIES		LIEBHERR 154 EC-H 6 Litronic®										2 PART LINE	
HOOK RADIUS	MODE	MAXIMUM CAPACITY @ RADIUS	HOOK RADIUS	ft.	82	98	115	131	148	164	180	197	
197 ft. 60 m	LM1	13,230 lbs - 68 ft. 6,000 kgs - 20.6 m	CAPACITY	lbs	10,630	8,620	7,190	6,130	5,290	4,630	4,080	3,640	
				kgs	4,820	3,910	3,260	2,780	2,400	2,100	1,850	1,650	
197 ft. 60 m	LM2	13,230 lbs - 76 ft. 6,000 kgs - 23.1 m	CAPACITY	lbs	12,090	9,835	8,230	7,030	6,110	5,360	4,740	4,230	
				kgs	5,485	4,460	3,735	3,190	2,770	2,430	2,150	1,920	

**GENERAL NOTES**

- ALL CONTRACTS SUPERCEDE ANY DEVIATIONS BETWEEN THIS DRAWING SET AND THE CONTRACT
- IMPORTANT: THESE DRAWINGS CONTAIN IDEAS, DESIGNS, ARRANGEMENTS, AND PLANS THAT WERE CREATED AND ARE TO BE USED ONLY FOR THE SPECIFIED PROJECT AND SITE, AND ARE OWNED BY AND THE PROPERTY OF MORROW EQUIPMENT COMPANY, L.L.C. NONE OF THE IDEAS, DESIGNS, ARRANGEMENTS, AND PLANS CONTAINED HEREIN ARE TO BE REPRODUCED OR COPIED IN WHOLE OR PART OR DISCLOSED TO ANY PERSON, FIRM OR CORPORATION FOR ANY PURPOSE WHATSOEVER WITHOUT EXPRESS WRITTEN PERMISSION. THESE DRAWINGS ARE TO BE RETURNED UPON REQUEST.
- ALL "FOR BID" DRAWINGS ARE FOR ILLUSTRATIVE PURPOSES ONLY. THEY ARE NOT INTENDED TO BE REPRESENTATIVE OF FINAL WORKING DRAWINGS.
- REFER TO THE CRANE BROCHURE PROVIDED BY MORROW EQUIPMENT COMPANY, L.L.C. FOR DETAILS NOT SHOWN ON THIS DRAWING SET.
- REFER TO THE CRANE'S TECHNICAL DESCRIPTION MANUAL FOR INFORMATION NOT SHOWN ON THIS DRAWING SET OR ON THE CRANE'S BROCHURE.

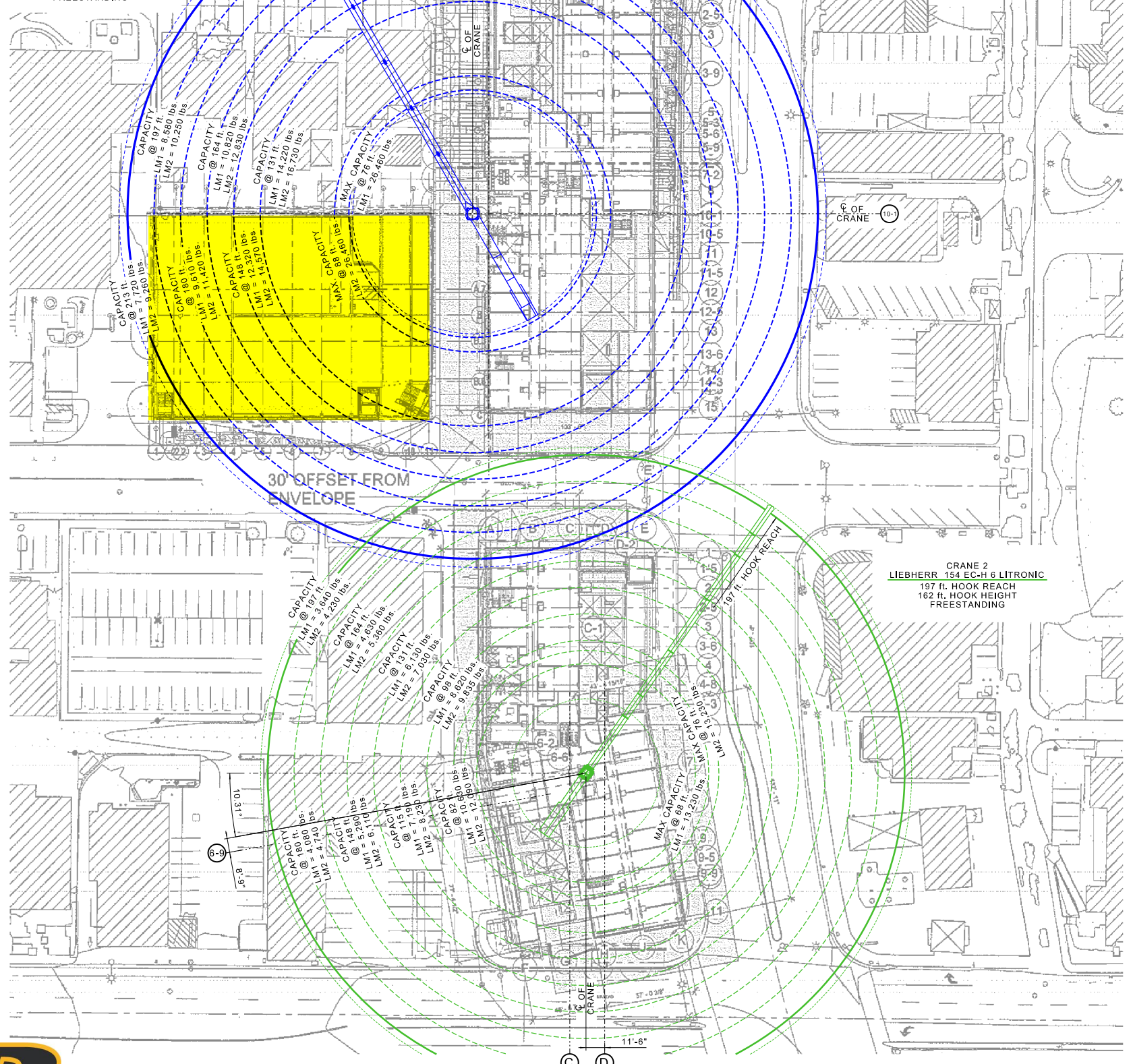
**DESIGN WIND CRITERIA**

TOWER CRANE WIND DESIGN PRESSURES (DIN 15018)			
SPEED	MONITORED	PRESSURE	HEIGHT
MPH / km/h	Y/N	psf / kN/m²	FULL HEIGHT
45 / 72	Y	5.2 / 0.25	0' - 26'-3" / 0m - 8m
63 / 101	N	10 / 0.48	> 26'-3" - 65'-7" / > 8m - 20m
80 / 129	N	17 / 0.81	> 65'-7" - 328'-0" / > 20m - 100m
94 / 151	N	23 / 1.1	> 328'-0" / > 100m
102 / 164	N	27 / 1.29	> 328'-0" / > 100m

THE DESIGN WIND CRITERIA IS USED FOR THE STRUCTURAL LOADING AND CONFIGURATION OF THE FREESTANDING AND TOP CLIMBING OF THE TOWER CRANE. SITE SPECIFIC DESIGN WIND CRITERIA CAN BE PROVIDED FOR A FEE. SITE SPECIFIC DESIGN WIND CRITERIA MAY CHANGE THE TOWER CRANE MODEL OR CONFIGURATION.



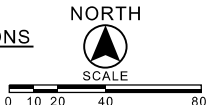
CRANE 1  
LIEBHERR 316 EC-H 12 LITRONIC  
213 ft. HOOK REACH  
130 ft. HOOK HEIGHT  
FREESTANDING



CRANE 2  
LIEBHERR 154 EC-H 6 LITRONIC  
197 ft. HOOK REACH  
162 ft. HOOK HEIGHT  
FREESTANDING



PLAN VIEW OF CRANE LOCATIONS  
SITE PLAN SHOWN



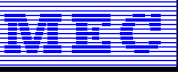
**MORROW**  
The American Home of  
**LIEBHERR**

PO Box 4306  
3218 Pringle Road SE  
Salem, Oregon 97302-0306  
USA

Tel: (503) 585-5721  
Fax: (503) 315-1279  
E-Mail: [engineering@morrow.com](mailto:engineering@morrow.com)

Customer

**Brewer Corporation**  
SDSU South Plaza Verde  
San Diego, CA



Dr. by: GJS / Ch. by: PAL

Title:  
PLAN VIEW OF CRANE LOCATIONS

Issue Purpose:  
NOT FOR CONSTRUCTION  
BID DRAWING "1"

Date:  
11-06-14

Rev. No.	Rev. Date	Rev. By	Ch. By

Job number:  
1411-409  
Sheet: