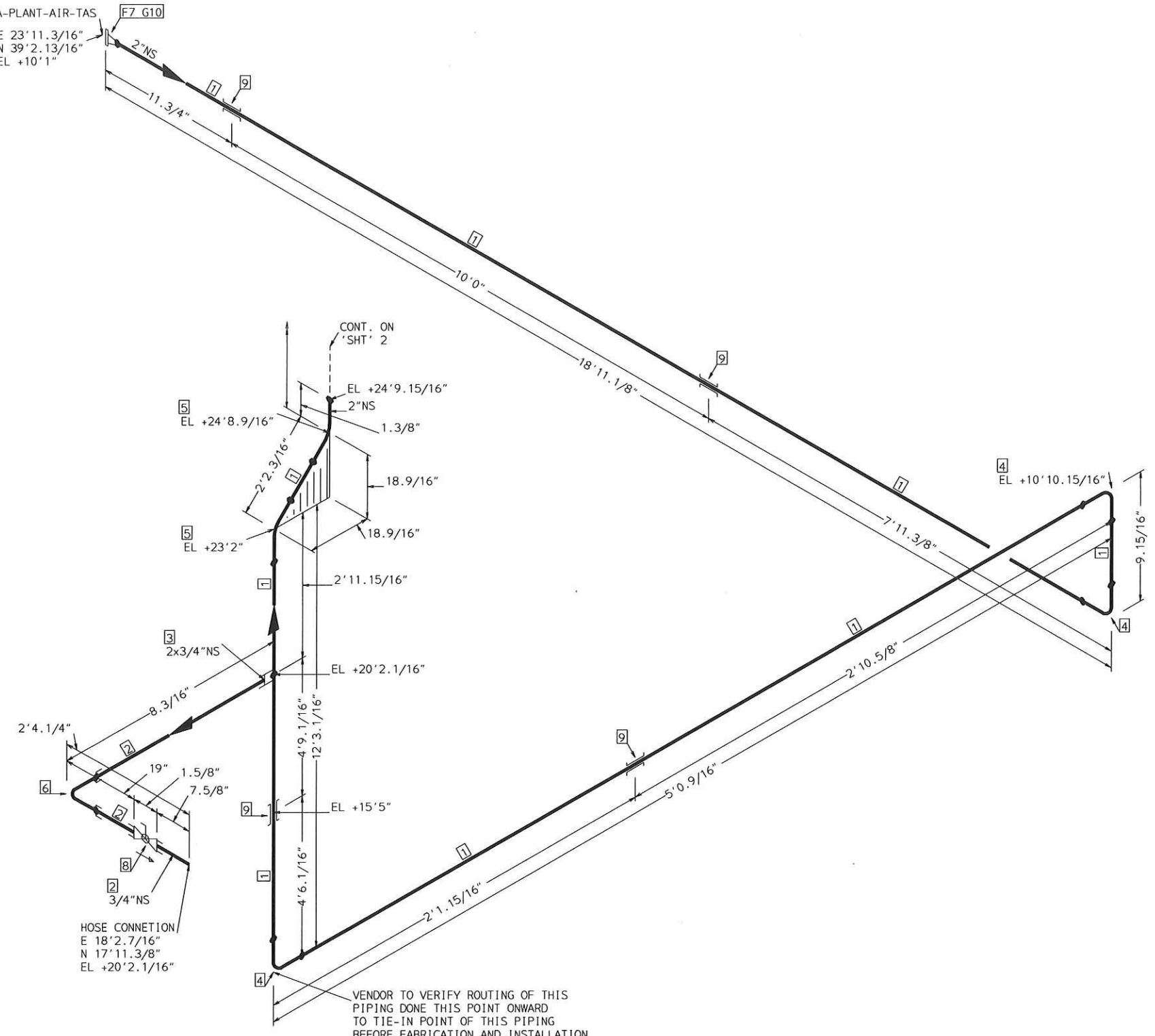




CON. ON "-CAGA-PLANT-AIR-TAS

E 23'11.3/16"
N 39'2.13/16"
EL +10'1"

F7 G10



FABRICATION MATERIALS

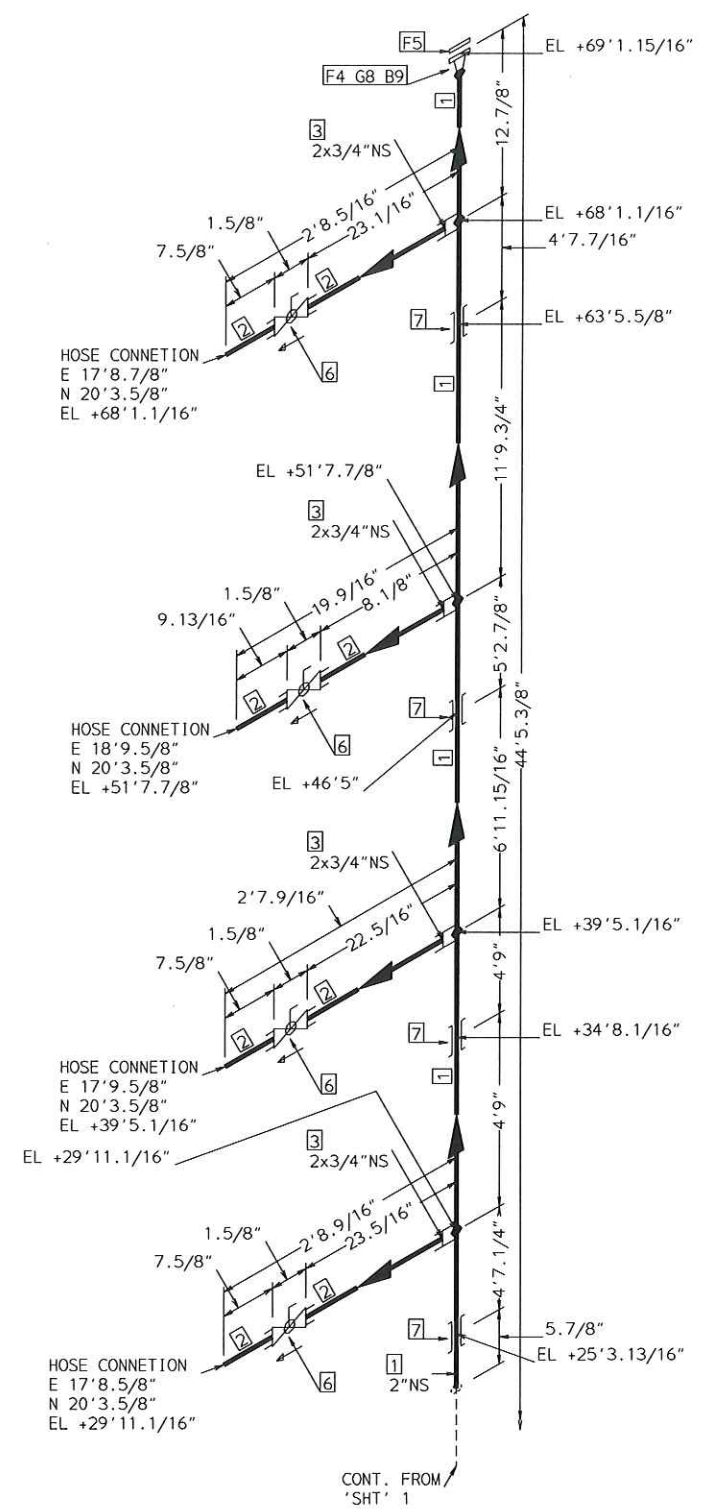
PT NO	SPEC	COMPONENT DESCRIPTION	N.S.	QTY
PIPE				
1	CAGA	PIPE STD WT ERW STL A53-B ASTM A53 GR.B	2	37.2'
2	CAGA	PIPE SCH 80 SMLS STL A106-B ASTM A106 GR.B	3/4	2.7'
FITTINGS				
3	CAGA	TEE BY HALF CPLG ANSI B16.11 NPT #3000 ASTM A105	2 x 3/4	1
4	CAGA	ELBOW 90DEG LR ANSI B16.9 BW STD ASTM A234 GR.WPB	2	3
5	CAGA	ELBOW 45DEG ANSI B16.9 BW STD ASTM A 234 Gr. WPB	2	2
6	CAGA	ELBOW 90DEG ANSI B16.11 SW #3000 ASTM A105	3/4	1
FLANGES				
7	CAGA	FLANGE WN ANSI B16.5 #150.RF ASTM A105	2	1
VALVES / IN-LINE ITEMS				
8	CAGA	BALL 400# SCRCD BRASS THREE PIECE	3/4	1

ERECTION MATERIALS

PT NO	SPEC	COMPONENT DESCRIPTION	N.S.	QTY
FITTINGS				
9	SUPP	SPS-32A GUIDE SUPPORT	2	4
GASKETS				
10	CAGA	GASKET 1/8" THK ASME B16.21 150# RF RED RUBBER RING 1.5MM THK	2	1

AREA: CETYL		2"-CAGA-PLANT-AIR	
PIPING GA NO:	P&ID NO: 0	STRESS CRITICAL: NA	
OP.TEMP: AMB	OP.PRESS: 40 psig	TEST MEDIUM: Pneumatic	
DES.TEMP: 150	DES.PRESS: 150	TEST PRESS: 165	
SCALE: NONE	INSUL.TYPE:	INSUL.THK:	
LINE NO. / FILE NAME: 2"-CAGA-PLANT-AIR			ISSUE: R3

SIZE-A3



FABRICATION MATERIALS				
PT NO	SPEC	COMPONENT DESCRIPTION	N.S.	QTY
PIPE				
1	CAGA	PIPE STD WT ERW STL A53-B ASTM A53 GR.B	2	44.2'
2	CAGA	PIPE SCH 80 SMLS STL A106-B ASTM A106 GR.B	3/4	8.7'
FITTINGS				
3	CAGA	TEE BY HALF CPLG ANSI B16.11 NPT #3000 ASTM A105	2 x 3/4	4
FLANGES				
4	CAGA	FLANGE WN ANSI B16.5 #150.RF ASTM A105	2	1
5	CAGA	FLANGE BLIND ANSI B16.5 #150.FF ASTM A105	2	1
VALVES / IN-LINE ITEMS				
6	CAGA	BALL 400# SCRDR BRASS THREE PIECE	3/4	4

ERECTION MATERIALS

PT NO	SPEC	COMPONENT DESCRIPTION	N.S.	QTY
FITTINGS				
7	SUPP	SPS-32A GUIDE SUPPORT	2	4
GASKETS				
8	CAGA	GASKET 1/8" THK ASME B16.21 150# RF RED RUBBER RING 1.5MM THK	2	1
BOLTS				
9	CAGA	2.9/16 x5/8" MACHINE BOLT CS A307 GRADE B W/1 NUT	11/16	4

AREA: CETYL		2"-CAGA-PLANT-AIR	
PIPING GA NO:	P&ID NO: 0	STRESS CRITICAL: NA	
OP.TEMP: AMB	OP.PRESS: 40 psig	TEST MEDIUM: Pneumatic	
DES.TEMP: 150	DES.PRESS: 150	TEST PRESS: 165	
SCALE: NONE	INSUL.TYPE:	INSUL.THK:	
LINE NO. / FILE NAME: 2"-CAGA-PLANT-AIR			ISSUE: R3

SIZE-A3