

CONT. ON
EXIST. N2
E 22'10"
N 54'0.11/16"
EL +18'11.15/16"
TP-1014/02
MOVE EXISTING N2 CONN.
TOWARDS EAST
TO CLEAR CTWA LINES
FIELD ROUTED LINE

CONT. ON
'SHT' 2

FABRICATION MATERIALS				
PT NO	SPEC	COMPONENT DESCRIPTION	N.S.	QTY
1	NITA	PIPE		
		PIPE SCH 80 SMLS STL A106-B	1	27.2'
2	NITA	FITTINGS		
		ELL 90 DEG 2000# SCRDL STL A105	1	7

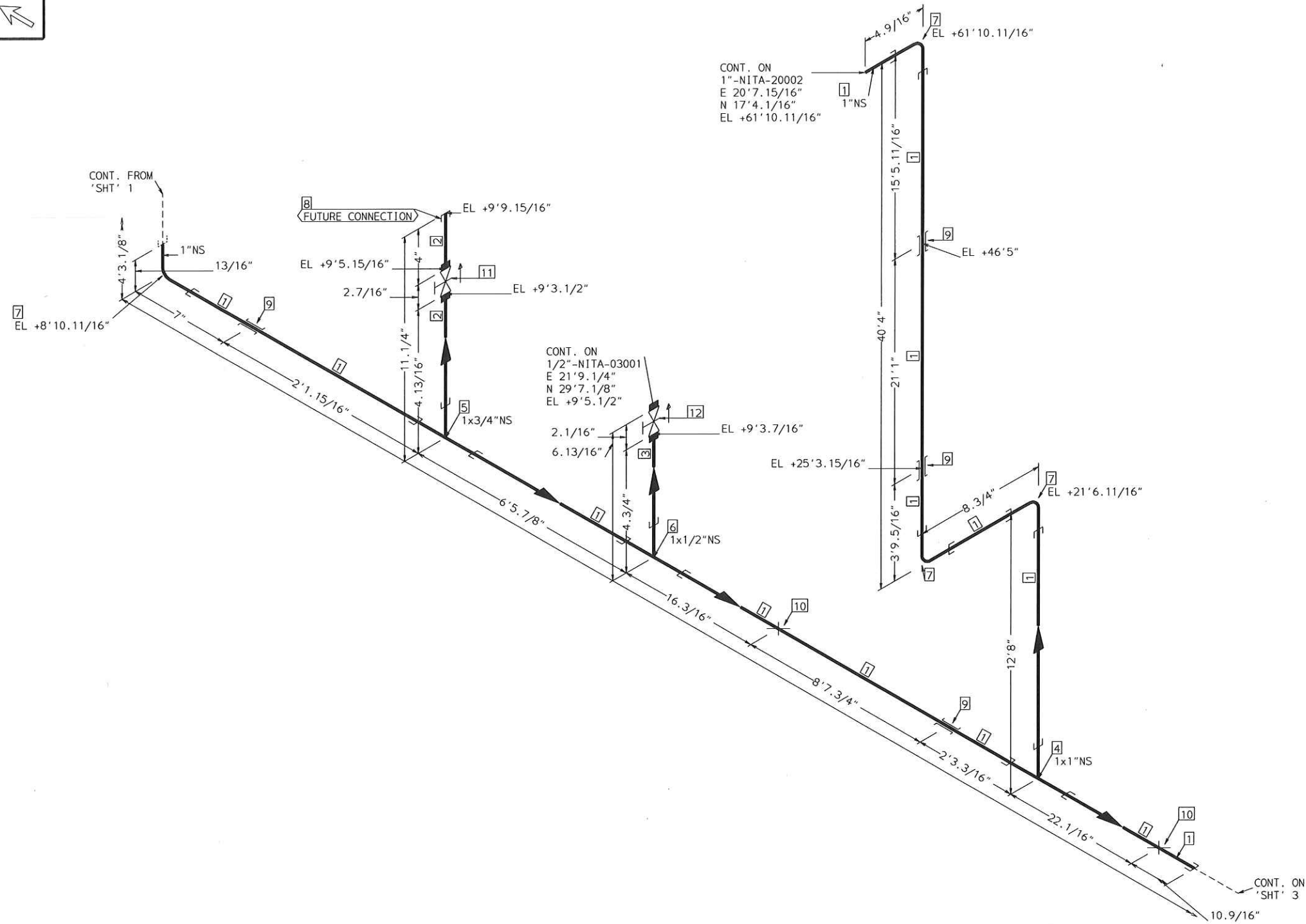
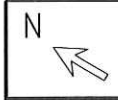
ERECTION MATERIALS

PT NO	SPEC	COMPONENT DESCRIPTION	N.S.	QTY
3	SUPP	FITTINGS		
		SPS-32A GUIDE SUPPORT	1	3

TRACING SPEC: S-TRACING (NOTE-10)

AREA: CETYL		1"-NITA-14001	
PIPING GA NO: -	P&ID NO: 1014	STRESS CRITICAL: NA	
OP. TEMP: AWB	OP. PRESS: 40psig	TEST MEDIUM: Pneumatic	
DES. TEMP: 150°F	DES. PRESS: 150psig	TEST PRESS: 40psig	
SCALE: NONE	INSUL. TYPE:	INSUL. THK:	
LINE NO. / FILE NAME: 1"-NITA-14001			ISSUE: R3

SIZE-A3

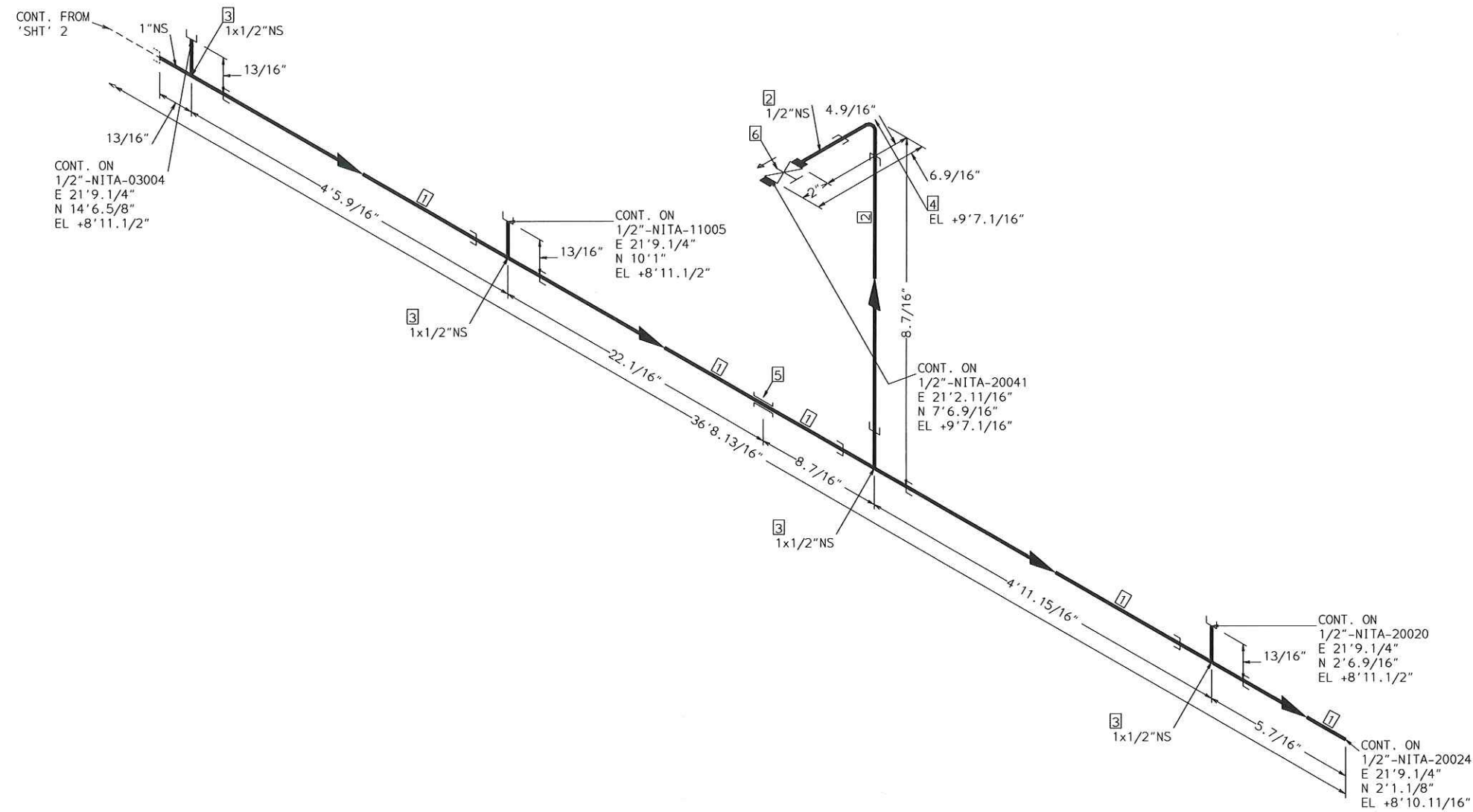


TRACING SPEC: S-TRACING (NOTE-10)

FABRICATION MATERIALS				
PT NO	SPEC	COMPONENT DESCRIPTION	N.S.	QTY
PIPE				
1	NITA	PIPE SCH 80 SMLS STL A106-B	1	77.4'
2	NITA	PIPE SCH 80 SMLS STL A106-B	3/4	0.7'
3	NITA	PIPE SCH 80 SMLS STL A106-B	1/2	0.4'
FITTINGS				
4	NITA	TEE 2000# SCRD STL A105	1 x 1	1
5	NITA	TEE 2000# SCRD STL A105	1 x 3/4	1
6	NITA	TEE 2000# SCRD STL A105	1 x 1/2	1
7	NITA	ELL 90 DEG 2000# SCRD STL A105	1	4
8	NITA	CAP 3000# SCRD STL A105	3/4	1

ERECTION MATERIALS				
PT NO	SPEC	COMPONENT DESCRIPTION	N.S.	QTY
FITTINGS				
9	SUPP	SPS-32A GUIDE SUPPORT	1	4
10	SUPP	RESTING SUPPORT CS	1	2
VALVES / IN-LINE ITEMS				
11	NITA	GATE 800#SCRD F6/STL TRIM OS&Y ASTM A105	3/4	1
12	NITA	GATE 800#SCRD F6/STL TRIM OS&Y ASTM A105	1/2	1

AREA: CETYL		1"-NITA-14001	
PIPING GA NO: -	P&ID NO: 1014	STRESS CRITICAL: NA	
OP. TEMP: AMB	OP. PRESS: 40psig	TEST MEDIUM: Pneumatic	
DES. TEMP: 150°F	DES. PRESS: 150psig	TEST PRESS: 40psig	
SCALE: NONE	INSUL. TYPE:	INSUL. THK:	
LINE NO. / FILE NAME: 1"-NITA-14001			ISSUE: R3

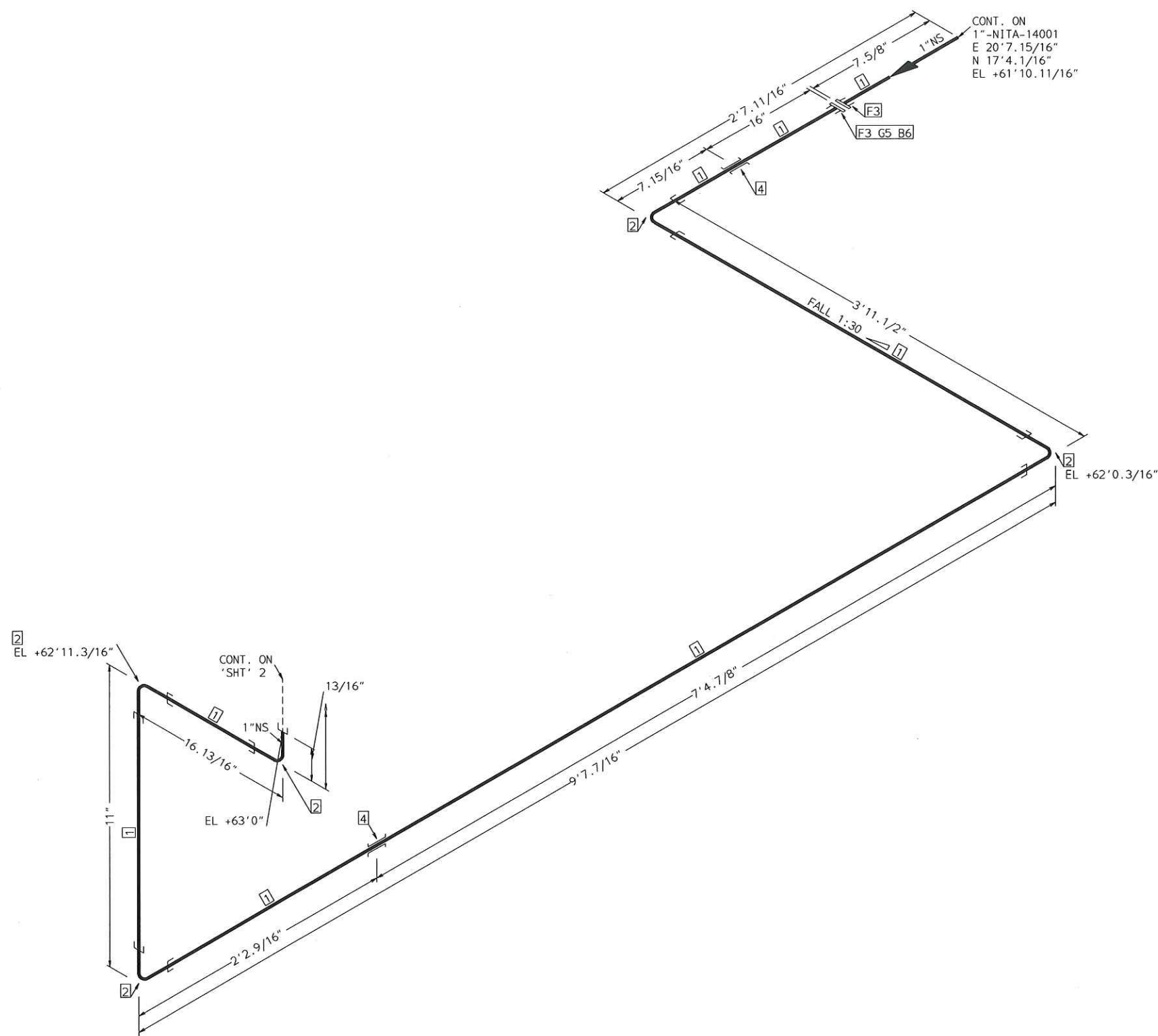
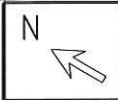


TRACING SPEC: S-TRACING (NOTE-10)

FABRICATION MATERIALS				
PT NO	SPEC	COMPONENT DESCRIPTION	N.S.	QTY
PIPE				
1	NITA	PIPE SCH 80 SMLS STL A106-B	1	12.0'
2	NITA	PIPE SCH 80 SMLS STL A106-B	1/2	1.0'
FITTINGS				
3	NITA	TEE 2000# SCRDL STL A105	1 x 1/2	4
4	NITA	ELL 90 DEG 2000# SCRDL STL A105	1/2	1
ERECTION MATERIALS				
PT NO	SPEC	COMPONENT DESCRIPTION	N.S.	QTY
FITTINGS				
5	SUPP	SPS2A GUIDE SUPPORT	1	1
VALVES / IN-LINE ITEMS				
6	NITA	GATE 800#SCRDL F6/STL TRIM OS&Y ASTM A105	1/2	1

AREA: CETYL	1"-NITA-14001	
PIPING GA NO: -	P&ID NO: 1014	STRESS CRITICAL: NA
OP. TEMP: AMB	OP. PRESS: 40psig	TEST MEDIUM: Pneumatic
DES. TEMP: 150°F	DES. PRESS: 150psig	TEST PRESS: 40psig
SCALE: NONE	INSUL. TYPE:	INSUL. THK:
LINE NO. / FILE NAME: 1"-NITA-14001	ISSUE: R3	

SIZE-A3



CONT. ON
 1"-NITA-14001
 E 20'7.15/16"
 N 17'4.1/16"
 EL +61'10.11/16"

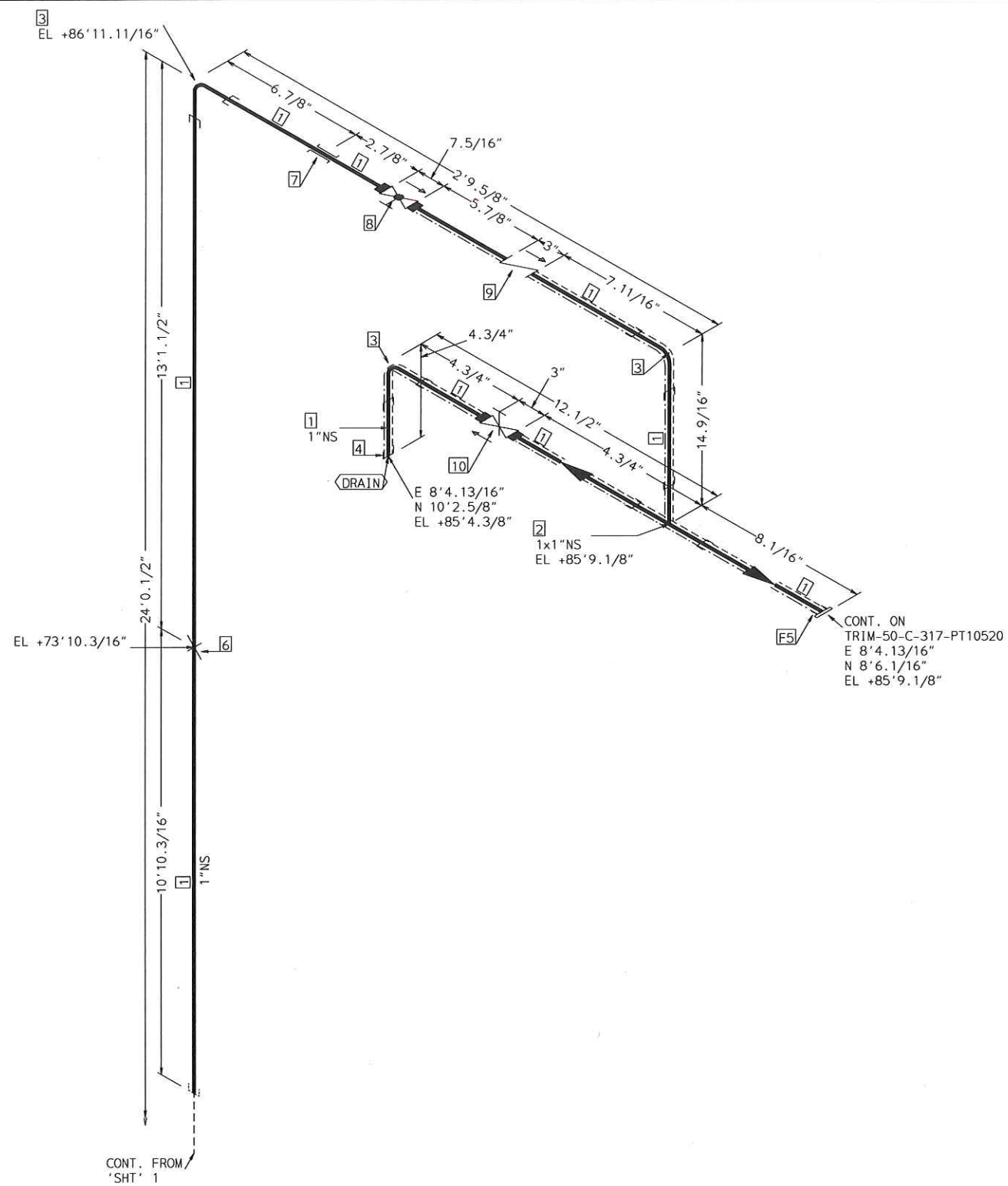
CONT. ON
 'SHT' 2
 13/16"
 1"NS
 16.13/16"
 EL +63'0"
 11'

EL +62'0.3/16"

TRACING SPEC: S-TRACING (NOTE-10)

FABRICATION MATERIALS				
PT NO	SPEC	COMPONENT DESCRIPTION	N.S.	QTY
1	NITA	PIPE	1	18.0'
		PIPE SCH 80 SMLS STL A106-B		
2	NITA	FITTINGS	1	5
		ELL 90 DEG 2000# SCRD STL A105		
3	NITA	FLANGES	1	2
		FLG SCRD 150# RF STL A105		
ERECTION MATERIALS				
PT NO	SPEC	COMPONENT DESCRIPTION	N.S.	QTY
4	SUPP	FITTINGS	1	2
		SPS-32A GUIDE SUPPORT		
5	NITA	GASKETS	1	1
		GASKET 150# RING 1/8" 304 SPRL WND W/FLEXICARB TYPE CG		
6	NITA	BOLTS	9/16	4
		2.9/16 x1/2" STUD BOLT A193 GR B7 W/2 A194 GR 2H NUTS		

AREA: CETYL		1"-NITA-20002	
PIPING GA NO: -	P&ID NO: 1020/1011	STRESS CRITICAL: NA	
OP.TEMP: 70°F	OP.PRESS: 80 psig	TEST MEDIUM: Pneumatic	
DES.TEMP: 130°F	DES.PRESS: 150 psig	TEST PRESS: 165 psig	
SCALE: NONE	INSUL.TYPE: NS-CELLULAR	INSUL.THK: 1.5	
LINE NO. / FILE NAME: 1"-NITA-20002	ISSUE: R3		SIZE-A3

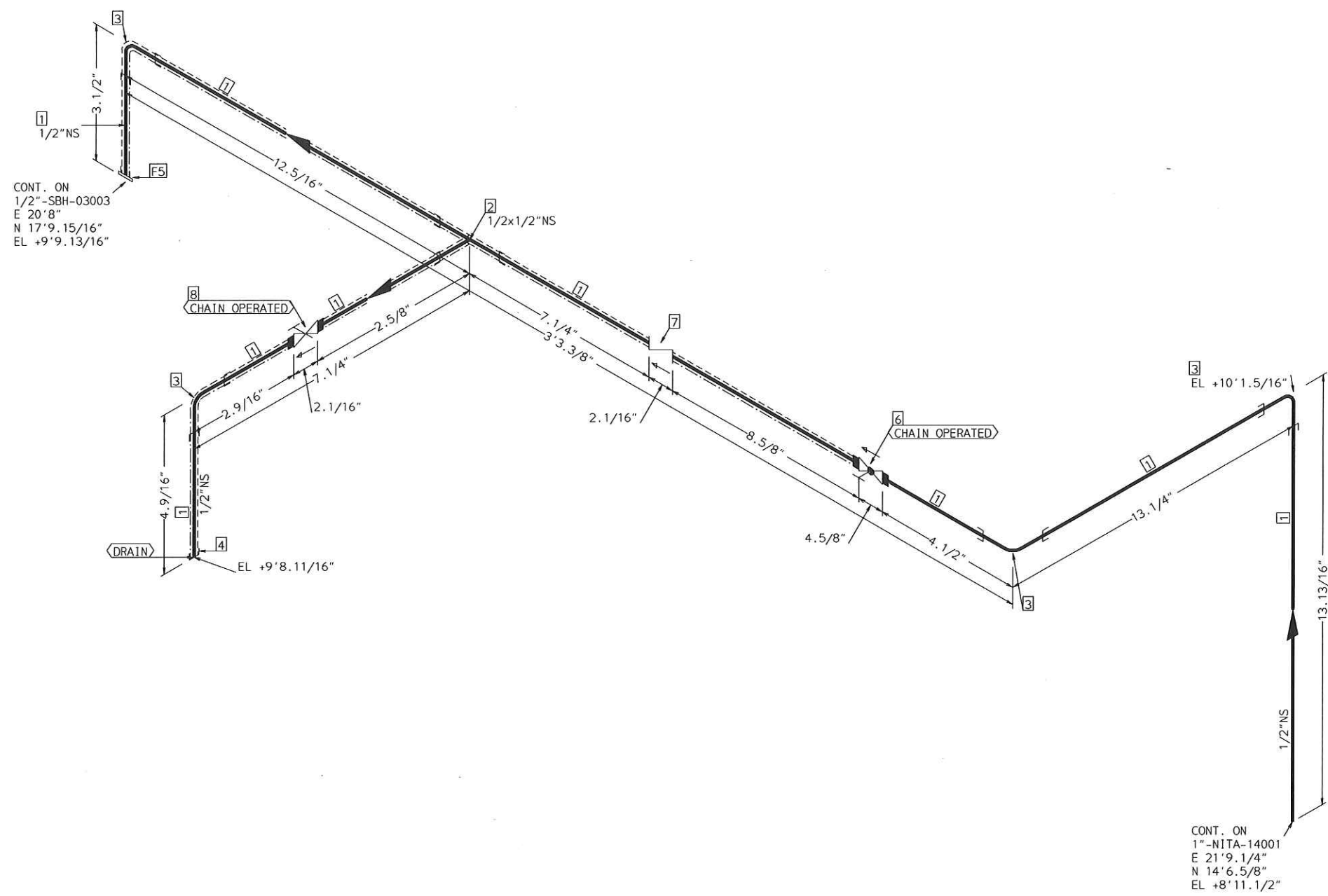


FABRICATION MATERIALS				
PT NO	SPEC	COMPONENT DESCRIPTION	N.S.	QTY
PIPE				
1	NITA	PIPE SCH 80 SMLS STL A106-B	1	28.4'
FITTINGS				
2	NITA	TEE 2000# SCRDL STL A105	1 x 1	1
3	NITA	ELL 90 DEG 2000# SCRDL STL A105	1	3
4	NITA	CAP 3000# SCRDL STL A105	1	1
FLANGES				
5	NITA	FLG SCRDL 150# RF STL A105	1	1
ERECTION MATERIALS				
PT NO	SPEC	COMPONENT DESCRIPTION	N.S.	QTY
FITTINGS				
6	SUPP	VERTICAL TRUNNION SUPPORT SPS25A	1	1
7	SUPP	SPS-32A GUIDE SUPPORT	1	1
VALVES / IN-LINE ITEMS				
8	NITA	VALVE GLOBE NPT #800 ASTM A105	1	1
9	NITA	CHECK 800# SCRDL C.STL SWING FULL PORT F6 TRIM ASTM A105	1	1
10	NITA	GATE 800#SCRDL F6/STL TRIM OS&Y ASTM A105	1	1

TRACING SPEC: S-TRACING (NOTE-10)

AREA: CETYL		1"-NITA-20002	
PIPING GA NO: -	P&ID NO: 1020/1011	STRESS CRITICAL: NA	
OP.TEMP: 70°F	OP.PRESS: 80 psig	TEST MEDIUM: Pneumatic	
DES.TEMP: 130°F	DES.PRESS: 150 psig	TEST PRESS: 165 psig	
SCALE: NONE	INSUL.TYPE: NS-CELLULAR	INSUL.THK: 1.5	
LINE NO. / FILE NAME: 1"-NITA-20002			ISSUE: R3

SIZE-A3



CONT. ON
 1/2"-SBH-03003
 E 20'8"
 N 17'9.15/16"
 EL +9'9.13/16"

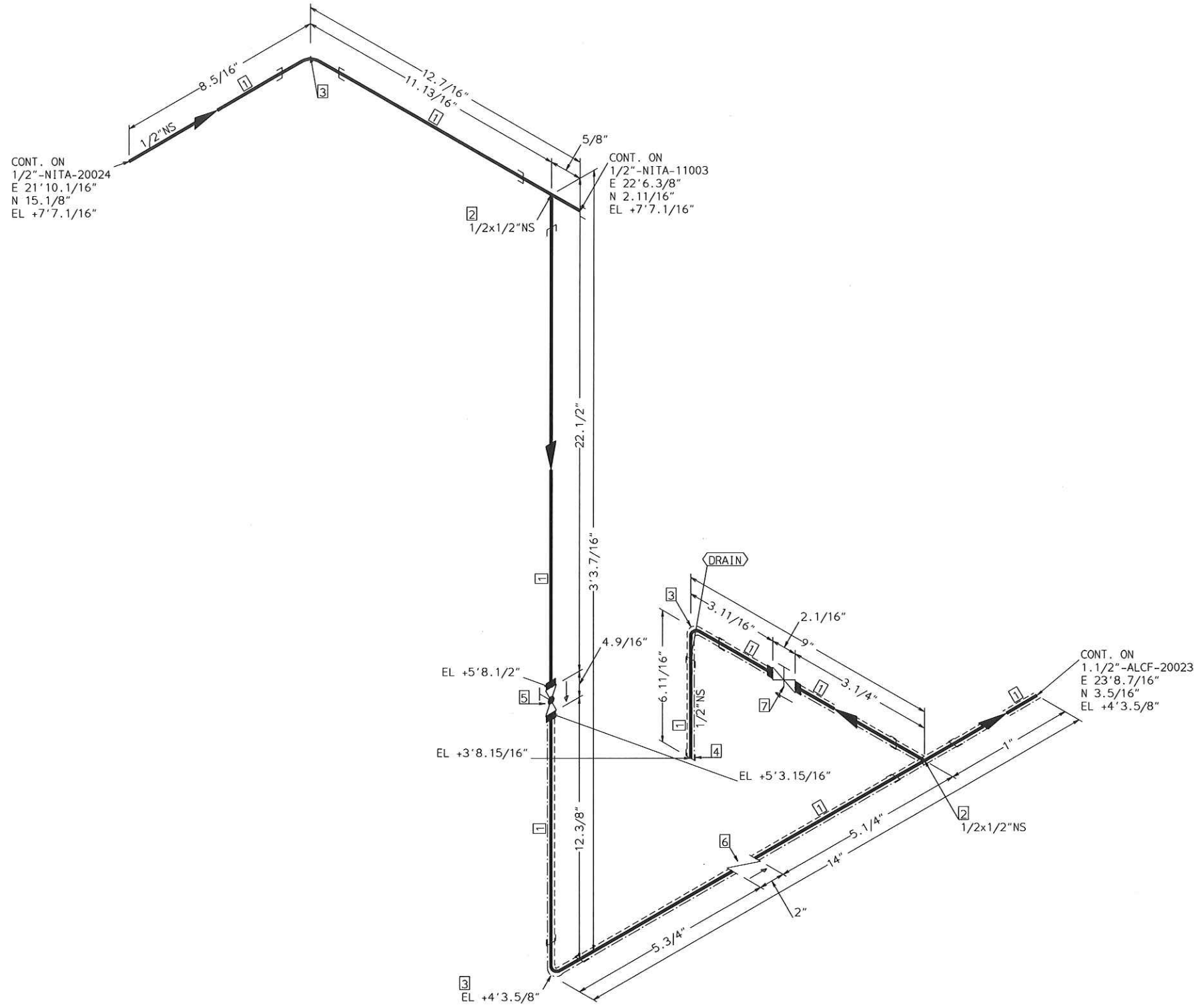
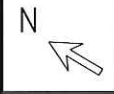
CONT. ON
 1"-NITA-14001
 E 21'9.1/4"
 N 14'6.5/8"
 EL +8'11.1/2"

TRACING SPEC: S-TRACING (NOTE-10)

FABRICATION MATERIALS				
PT NO	SPEC	COMPONENT DESCRIPTION	N.S.	QTY
PIPE				
1	NITA	PIPE SCH 80 SMLS STL A106-B	1/2	5.6'
FITTINGS				
2	NITA	TEE 2000# SCRDL STL A105	1/2 x	1
3	NITA	ELL 90 DEG 2000# SCRDL STL A105	1/2	4
4	NITA	CAP 3000# SCRDL STL A105	1/2	1
FLANGES				
5	NITA	FLG SCRDL 150# RF STL A105	1/2	1
ERECTION MATERIALS				
PT NO	SPEC	COMPONENT DESCRIPTION	N.S.	QTY
VALVES / IN-LINE ITEMS				
6	NITA	VALVE GLOBE NPT #800 ASTM A105	1/2	1
7	NITA	CHECK 800# SCRDL C.STL SWING FULL PORT F6 TRIM ASTM A105	1/2	1
8	NITA	GATE 800#SCRDL F6/STL TRIM OS&Y ASTM A105	1/2	1

AREA: CETYL		1/2"-NITA-03004	
PIPING GA NO: -	P&ID NO: 1003/1011	STRESS CRITICAL: NA	
OP. TEMP: AMB	OP. PRESS: 40psig	TEST MEDIUM: Pneumatic	
DES. TEMP: 150°F	DES. PRESS: 150psig	TEST PRESS: 40psig	
SCALE: NONE	INSUL. TYPE: NS-CELLULAR	INSUL. THK: 1	
LINE NO. / FILE NAME: 1/2"-NITA-03004			ISSUE: R3

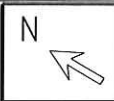
SIZE-A3



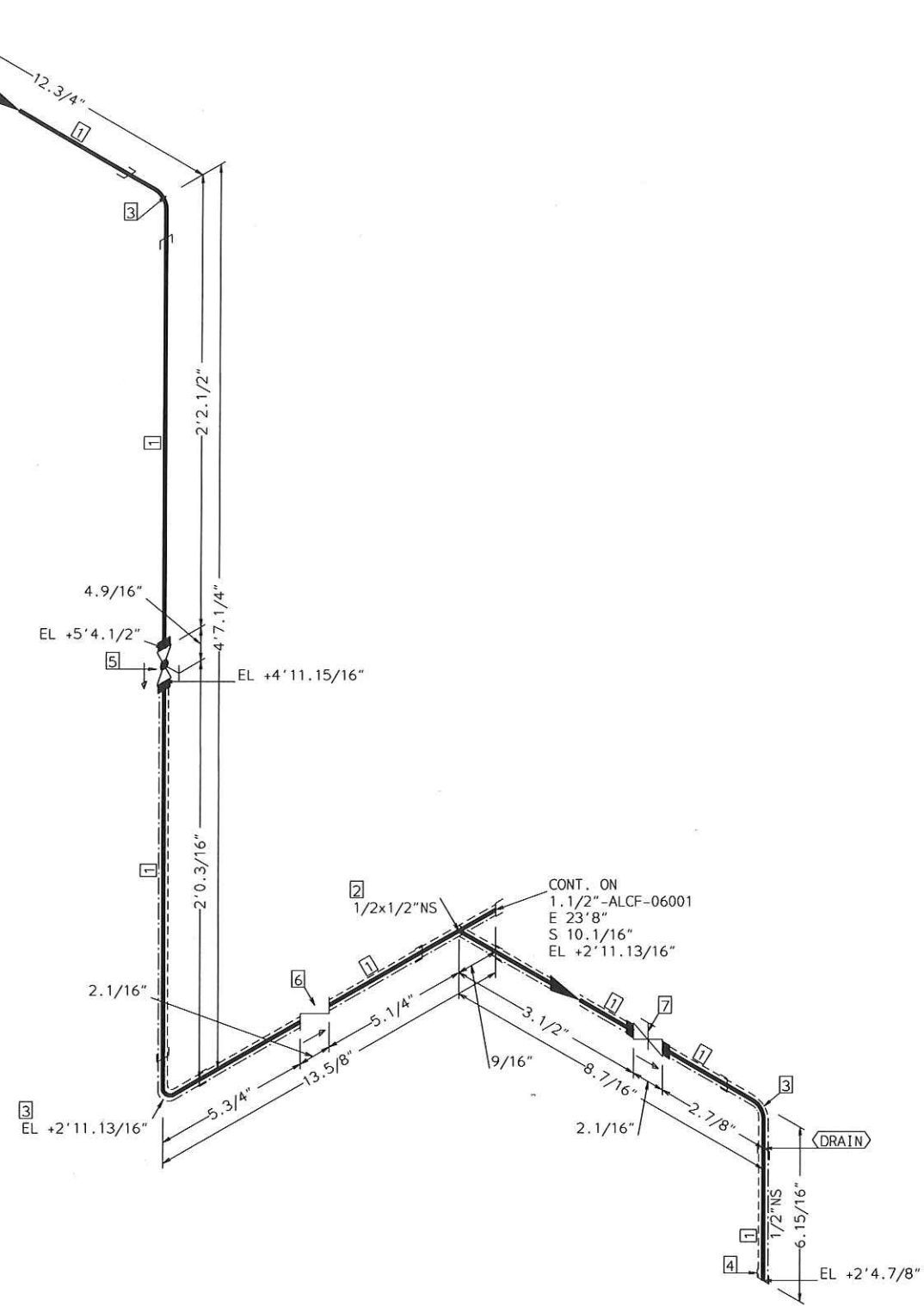
TRACING SPEC: S-TRACING (NOTE-10)

FABRICATION MATERIALS				
PT NO	SPEC	COMPONENT DESCRIPTION	N.S.	QTY
PIPE				
1	NITA	PIPE SCH 80 SMLS STL A106-B	1/2	6.2'
FITTINGS				
2	NITA	TEE 2000# SCRDL STL A105	1/2 x	2
3	NITA	ELL 90 DEG 2000# SCRDL STL A105	1/2	3
4	NITA	CAP 3000# SCRDL STL A105	1/2	1
ERECTION MATERIALS				
PT NO	SPEC	COMPONENT DESCRIPTION	N.S.	QTY
VALVES / IN-LINE ITEMS				
5	NITA	VALVE GLOBE NPT #800 ASTM A105	1/2	1
6	NITA	CHECK 800# SCRDL C.STL SWING FULL PORT F6 TRIM ASTM A105	1/2	1
7	NITA	GATE 800#SCRDL F6/STL TRIM OS&Y ASTM A105	1/2	1

AREA: CETYL		1/2" - NITA-11002	
PIPING GA NO:	P&ID NO: 1011/1006	STRESS CRITICAL: NA	
OP. TEMP: AMB	OP. PRESS: 40psig	TEST MEDIUM: SERVICE TEST	
DES. TEMP: 150°F	DES. PRESS: 150psig	TEST PRESS: 40psig	
SCALE: NONE	INSUL. TYPE: NS-CELLULAR	INSUL. THK: 1.5	
LINE NO. / FILE NAME: 1/2" - NITA-11002	ISSUE: R3		SIZE-A3



CONT. ON
 1/2"-NITA-11002
 E 22'6.3/8"
 N 2.11/16"
 EL +7'7.1/16"



CONT. ON
 1.1/2"-ALCF-06001
 E 23'8"
 S 10.1/16"
 EL +2'11.13/16"

TRACING SPEC: S-TRACING (NOTE-10)

FABRICATION MATERIALS

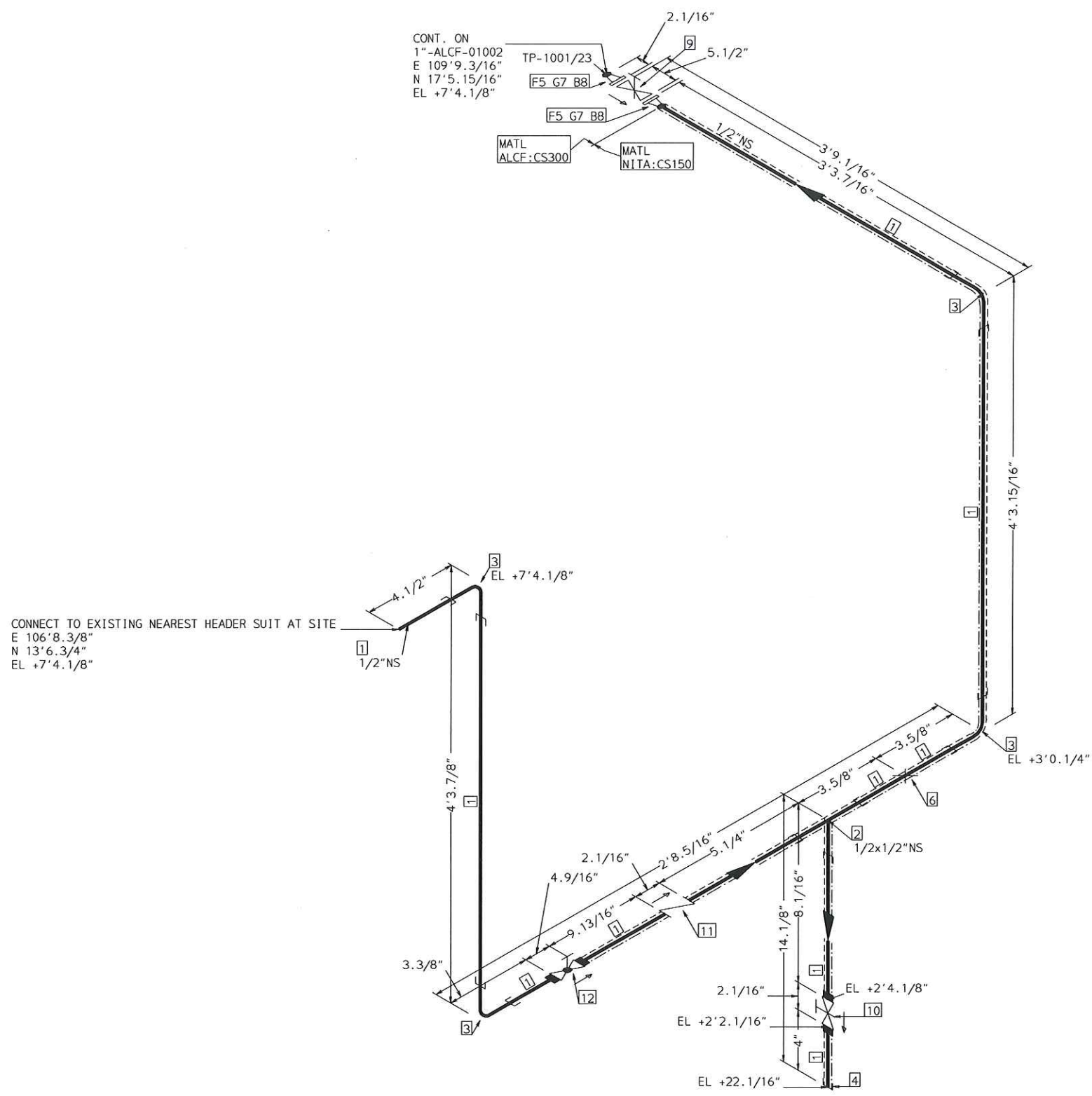
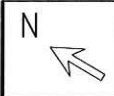
PT NO	SPEC	COMPONENT DESCRIPTION	N.S.	QTY
PIPE				
1	NITA	PIPE SCH 80 SMLS STL A106-B	1/2	7.0'
FITTINGS				
2	NITA	TEE 2000# SCRCD STL A105	1/2 x	1
3	NITA	ELL 90 DEG 2000# SCRCD STL A105	1/2	3
4	NITA	CAP 3000# SCRCD STL A105	1/2	1

ERECTION MATERIALS

PT NO	SPEC	COMPONENT DESCRIPTION	N.S.	QTY
VALVES / IN-LINE ITEMS				
5	NITA	VALVE GLOBE NPT #800 ASTM A105	1/2	1
6	NITA	CHECK 800# SCRCD C.STL SWING FULL PORT F6 TRIM ASTM A105	1/2	1
7	NITA	GATE 800#SCRCD F6/STL TRIM OS&Y ASTM A105	1/2	1

AREA: CETYL		1/2"-NITA-11003	
PIPING GA NO:	P&ID NO: 1011/1006	STRESS CRITICAL: NA	
OP.TEMP: <i>AMB</i>	OP.PRESS: 40psig	TEST MEDIUM: SERVICE TEST	
DES.TEMP: 150°F	DES.PRESS: 150psig	TEST PRESS: 40psig	
SCALE: NONE	INSUL.TYPE:	INSUL.THK: 2	
LINE NO. / FILE NAME: 1/2"-NITA-11003			ISSUE: R3

SIZE-A3



CONNECT TO EXISTING NEAREST HEADER SUIT AT SITE
 E 106'8.3/8"
 N 13'6.3/4"
 EL +7'4.1/8"

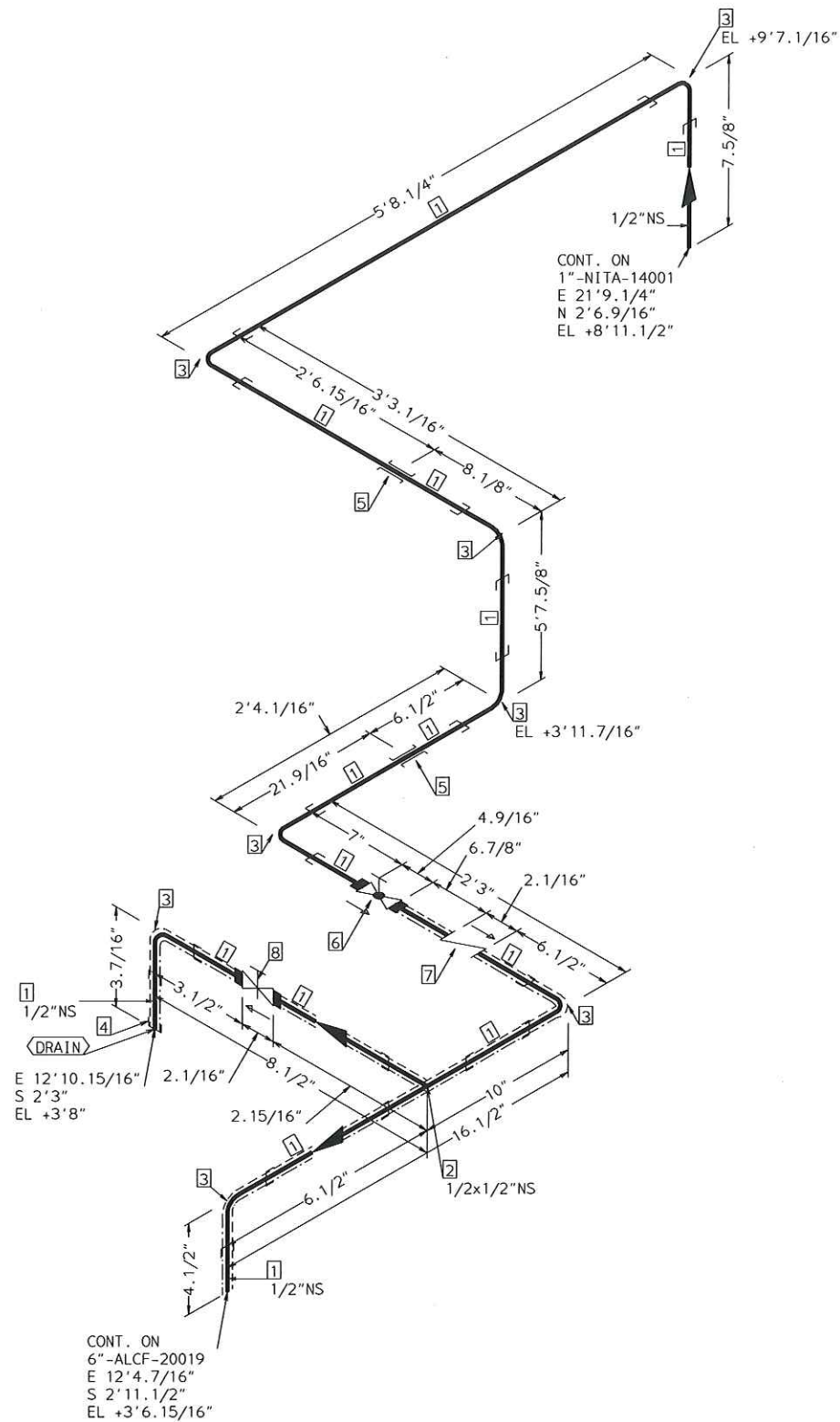
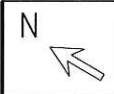
CONT. ON
 1"-ALCF-01002
 E 109'9.3/16"
 N 17'5.15/16"
 EL +7'4.1/8"

FABRICATION MATERIALS				
PT NO	SPEC	COMPONENT DESCRIPTION	N.S.	QTY
<u>PIPE</u>				
1	NITA	PIPE SCH 80 SMLS STL A106-B	1/2	14.8'
<u>FITTINGS</u>				
2	NITA	TEE 2000# SCRD STL A105	1/2 x	1
3	NITA	ELL 90 DEG 2000# SCRD STL A105	1/2	4
4	NITA	CAP 3000# SCRD STL A105	1/2	1
<u>FLANGES</u>				
5	ALCF	FLG WN 300# RF STL STD BORE A105	1/2	2
ERECTION MATERIALS				
PT NO	SPEC	COMPONENT DESCRIPTION	N.S.	QTY
<u>FITTINGS</u>				
6	SUPP	RESTING SUPPORT CS	1/2	1
<u>GASKETS</u>				
7	ALCF	GASKET 300# 1/8" 316 SPRL WND W/FLEXICARB TYPE CG	1/2	2
<u>BOLTS</u>				
8	ALCF	2.9/16 x 1/2" STUD BOLT A193 GR B7 W/2 A194 GR 2H NUTS	9/16	8
<u>VALVES / IN-LINE ITEMS</u>				
9	ALCF	GATE 300# FLANGED RF C.STL F6 TRIM(API TRIM#5) (HIGH TEMP PACKING REQUIRED ON VALVES)	1/2	1
10	NITA	GATE 800#SCRD F6/STL TRIM OS&Y ASTM A105	1/2	1
11	NITA	CHECK 800# SCRD C.STL SWING FULL PORT F6 TRIM ASTM A105	1/2	1
12	NITA	VALVE GLOBE NPT #800 ASTM A105	1/2	1

TRACING SPEC: S-TRACING (NOTE-10)

AREA: CETYL		1/2"-NITA-11004	
PIPING GA NO:	P&ID NO: 1001/1011	STRESS CRITICAL: NA	
OP.TEMP: AMB	OP.PRESS: 40psig	TEST MEDIUM: Pneumatic	
DES.TEMP: 150°F	DES.PRESS: 150psig	TEST PRESS: 40psig	
SCALE: NONE	INSUL.TYPE: N5-CELLULAR	INSUL.THK: 2"	
LINE NO. / FILE NAME: 1/2"-NITA-11004			ISSUE: R3

SIZE-A3

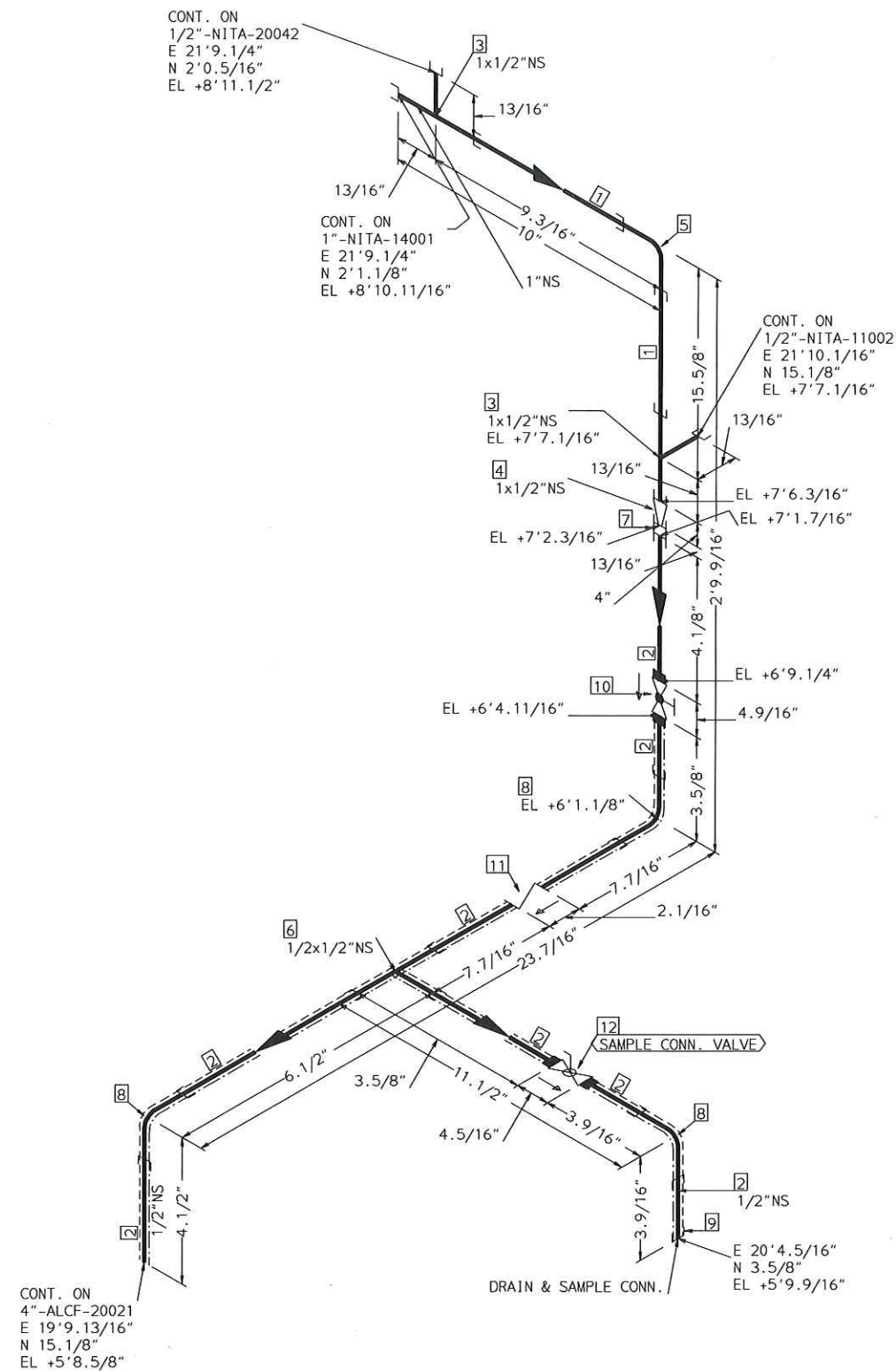


TRACING SPEC: S-TRACING (NOTE-10)

FABRICATION MATERIALS				
PT NO	SPEC	COMPONENT DESCRIPTION	N.S.	QTY
1	NITA	PIPE	1/2	20.9'
		PIPE SCH 80 SMLS STL A106-B		
2	NITA	FITTINGS	1/2 x	1
		TEE 2000# SCRDL STL A105		
3	NITA	ELL 90 DEG 2000# SCRDL STL A105	1/2	8
4	NITA	CAP 3000# SCRDL STL A105	1/2	1
ERECTION MATERIALS				
PT NO	SPEC	COMPONENT DESCRIPTION	N.S.	QTY
5	SUPP	FITTINGS	1/2	2
		SPS-32A GUIDE SUPPORT		
6	NITA	VALVES / IN-LINE ITEMS	1/2	1
		VALVE GLOBE NPT #800 ASTM A105		
7	NITA	CHECK 800# SCRDL C.STL SWING FULL PORT F6 TRIM ASTM A105	1/2	1
8	NITA	GATE 800#SCRDL F6/STL TRIM OS&Y ASTM A105	1/2	1

AREA: CETYL	1/2"-NITA-20020	
PIPING GA NO: -	P&ID NO: 1020	STRESS CRITICAL: NA
OP.TEMP: AMB°F	OP.PRESS: 40 psig	TEST MEDIUM: SERVICE TEST
DES.TEMP: 130°F	DES.PRESS: 150 psig	TEST PRESS: 40 psig
SCALE: NONE	INSUL.TYPE: NS-CELLULAR	INSUL.THK: 3inch
LINE NO. / FILE NAME: 1/2"-NITA-20020	ISSUE: R3	

SIZE-A3

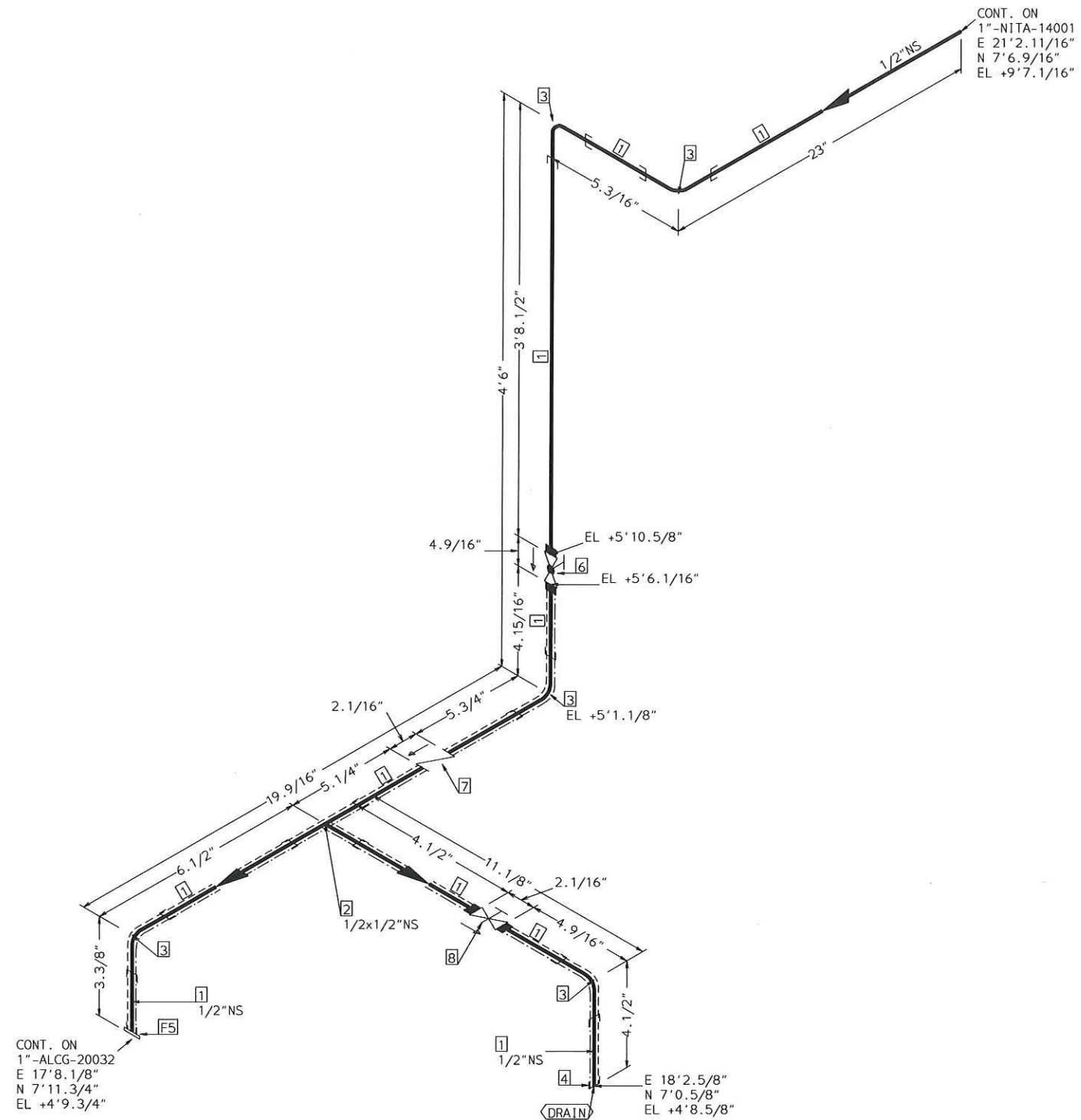
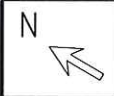


TRACING SPEC: S-TRACING (NOTE-10)

FABRICATION MATERIALS				
PT NO	SPEC	COMPONENT DESCRIPTION	N.S.	QTY
PIPE				
1	NITA	PIPE SCH 80 SMLS STL A106-B	1	1.8'
2	NITA	PIPE SCH 80 SMLS STL A106-B	1/2	3.3'
FITTINGS				
3	NITA	TEE 2000# SCRD STL A105	1 x 1/2	2
4	NITA	SWAGE CONC XS STL A234 GR WPB TBE	1 x 1/2	1
5	NITA	ELL 90 DEG 2000# SCRD STL A105	1	1
6	NITA	TEE 2000# SCRD STL A105	1/2 x 1/2	1
7	NITA	CPLG FULL ANSI B16.11 NPT #3000 ASTM A105	1/2	1
8	NITA	ELL 90 DEG 2000# SCRD STL A105	1/2	3
9	NITA	CAP 3000# SCRD STL A105	1/2	1

ERECTION MATERIALS				
PT NO	SPEC	COMPONENT DESCRIPTION	N.S.	QTY
VALVES / IN-LINE ITEMS				
10	NITA	VALVE GLOBE NPT #800 ASTM A105	1/2	1
11	NITA	CHECK 800# SCRD C.STL SWING FULL PORT F6 TRIM ASTM A105	1/2	1
12	NITA	BALL 1500# SCRD; C.S.; 2 PIECE; STD PORT ASTM A105	1/2	1

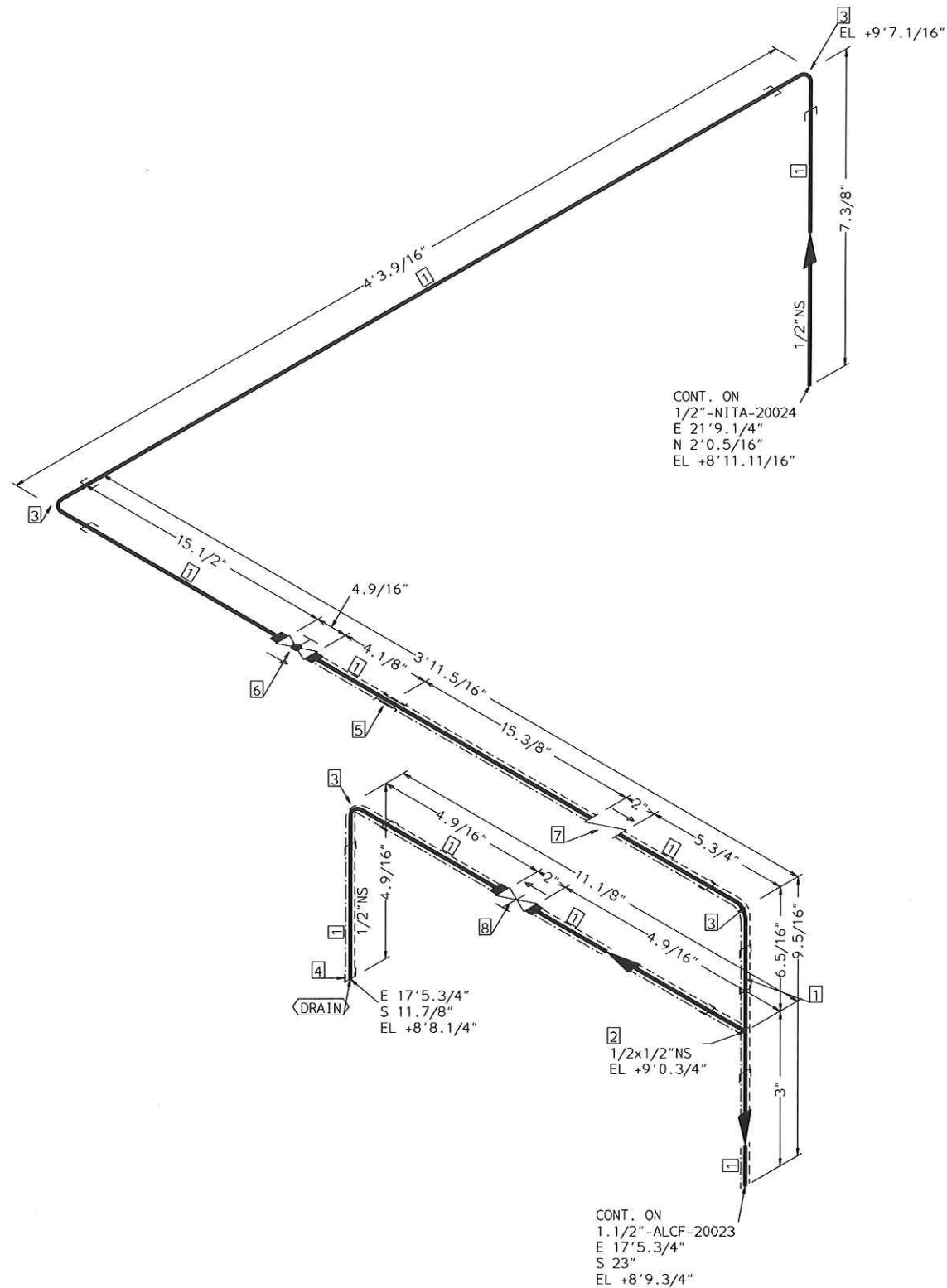
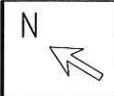
AREA: CETYL		1/2"-NITA-20024	
PIPING GA NO: -	P&ID NO: 1020	STRESS CRITICAL: NA	
OP.TEMP: AWB	OP.PRESS: 40psig	TEST MEDIUM: SERVICE TEST	
DES.TEMP: 150°F	DES.PRESS: 150psig	TEST PRESS: 40psig	
SCALE: NONE	INSUL.TYPE: NS-CELLULAR	INSUL.THK: 2	
LINE NO. / FILE NAME: 1/2"-NITA-20024			ISSUE: R3



TRACING SPEC: S-TRACING (NOTE-10)

FABRICATION MATERIALS				
PT NO	SPEC	COMPONENT DESCRIPTION	N.S.	QTY
1	NITA	PIPE	1/2	8.7'
		PIPE SCH 80 SMLS STL A106-B		
2	NITA	FITTINGS	1/2 x	1
		TEE 2000# SCRDL STL A105		
3	NITA	ELL 90 DEG 2000# SCRDL STL A105	1/2	5
4	NITA	CAP 3000# SCRDL STL A105	1/2	1
5	NITA	FLANGES	1/2	1
		FLG SCRDL 150# RF STL A105		
ERECTION MATERIALS				
PT NO	SPEC	COMPONENT DESCRIPTION	N.S.	QTY
6	NITA	VALVES / IN-LINE ITEMS	1/2	1
		VALVE GLOBE NPT #800 ASTM A105		
7	NITA	CHECK 800# SCRDL C.STL SWING FULL PORT F6 TRIM ASTM A105	1/2	1
8	NITA	GATE 800#SCRDL F6/STL TRIM OS&Y ASTM A105	1/2	1

AREA: CETYL		1/2"-NITA-20041	
PIPING GA NO:	P&ID NO: 1020	STRESS CRITICAL: NA	
OP.TEMP: AWB	OP.PRESS: 40psig	TEST MEDIUM: SERVICE TEST	
DES.TEMP: 150°F	DES.PRESS: 150psig	TEST PRESS: 40psig	
SCALE: NONE	INSUL.TYPE: NS-CELLULAR	INSUL.THK: 1.5"	
LINE NO. / FILE NAME: 1/2"-NITA-20041			ISSUE: R3



TRACING SPEC: S-TRACING (NOTE-10)

FABRICATION MATERIALS				
PT NO	SPEC	COMPONENT DESCRIPTION	N.S.	QTY
PIPE				
1	NITA	PIPE SCH 80 SMLS STL A106-B	1/2	9.7'
FITTINGS				
2	NITA	TEE 2000# SCRCD STL A105	1/2 x	1
3	NITA	ELL 90 DEG 2000# SCRCD STL A105	1/2	4
4	NITA	CAP 3000# SCRCD STL A105	1/2	1
ERECTION MATERIALS				
PT NO	SPEC	COMPONENT DESCRIPTION	N.S.	QTY
FITTINGS				
5	SUPP	SPS-32A GUIDE SUPPORT	1/2	1
VALVES / IN-LINE ITEMS				
6	NITA	VALVE GLOBE NPT #800 ASTM A105	1/2	1
7	NITA	CHECK 800# SCRCD C.STL SWING FULL PORT F6 TRIM ASTM A105	1/2	1
8	NITA	GATE 800#SCRCD F6/STL TRIM OS&Y ASTM A105	1/2	1

AREA: CETYL		1/2"-NITA-20042	
PIPING GA NO: -	P&ID NO: 1020	STRESS CRITICAL: NA	
OP. TEMP: AMB	OP. PRESS: 40psig	TEST MEDIUM: Service Test	
DES. TEMP: 150°F	DES. PRESS: 150psig	TEST PRESS: 40psig	
SCALE: NONE	INSUL. TYPE: NS-CELLULAR	INSUL. THK: 1.5Inch	
LINE NO. / FILE NAME: 1/2"-NITA-20042			ISSUE: R3

SIZE-A3