

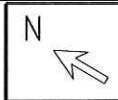
TRACING SPEC: S-TRACING (NOTE-10)

FABRICATION MATERIALS				
PT NO	SPEC	COMPONENT DESCRIPTION	N.S.	QTY
<u>PIPE</u>				
1	SBH	PIPE SMLS BE ASME B36.19 SCH10S ASTM A312 GR.TP304	1	26.2'
<u>FITTINGS</u>				
2	SBH	TEE SCH 10S STN.STL A403 SS304 BW	1 x 1	1
3	SBH	ELL 90 DEG LR SCH 10S STN.STL A403 SS304 BW	1	2
<u>FLANGES</u>				
4	SBH	FLG LAP JOINT 150# FF STL A105	1	2
5	SBH	FLG BLIND 150# RF STL ASTM A182 GR.F304	1	1
6	SBH	STUB-END 150# RF MSS SP 43 SCH10S TYPE A (SHORT PATTERN LENGTH) BW	1	1

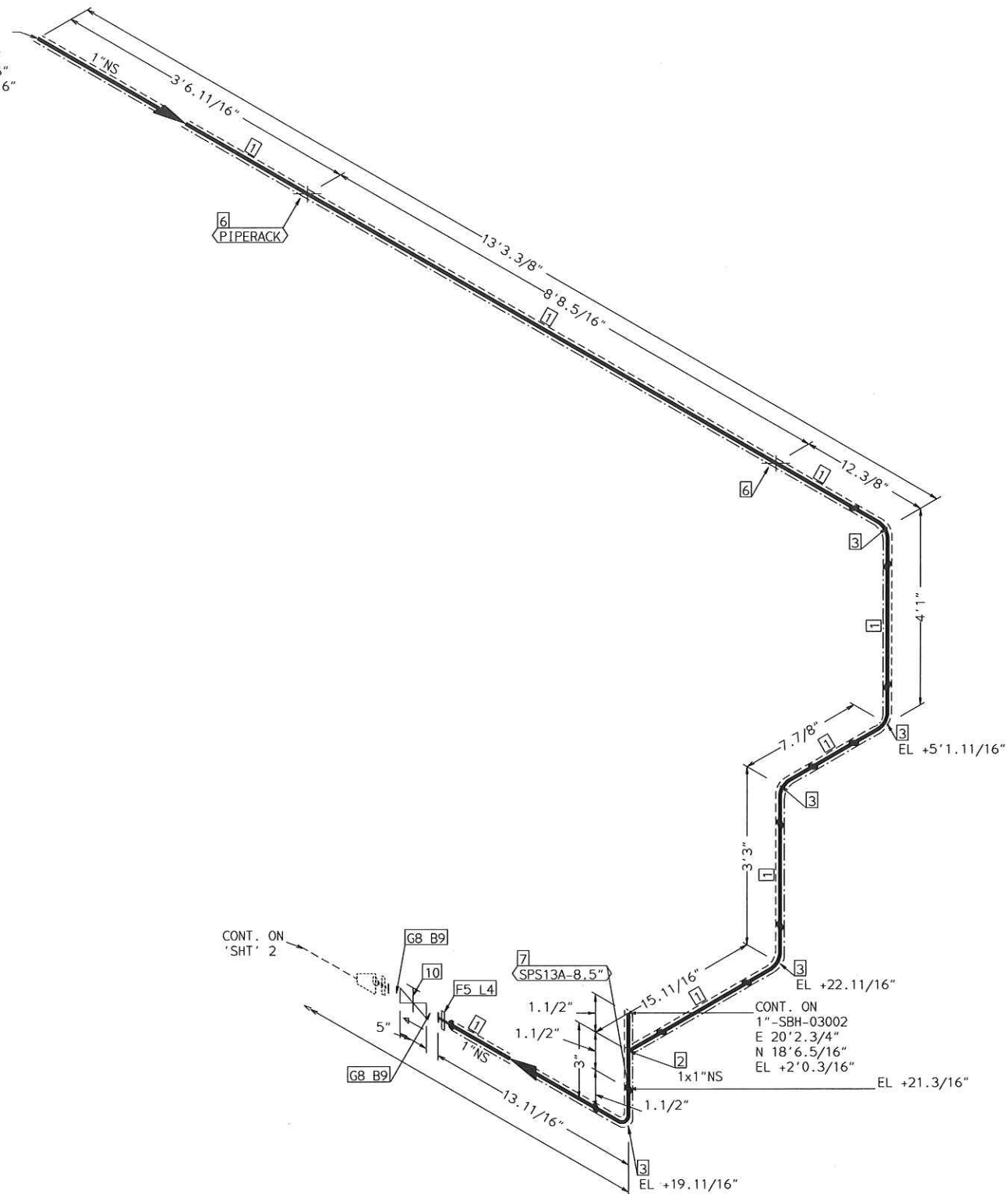
ERECTION MATERIALS				
PT NO	SPEC	COMPONENT DESCRIPTION	N.S.	QTY
<u>FITTINGS</u>				
7	SUPP	SPS-2 RESTING SUPPORT	1	2
<u>GASKETS</u>				
8	SBH	GASKET 150# 1/8" 316 SPRL WND W/FLEXICARB TYPE CG	1	3
<u>BOLTS</u>				
9	SBH	2.9/16 x1/2" STUD BOLT A307 GR B/ 2 A307 GR B NUTS	9/16	4
<u>VALVES / IN-LINE ITEMS</u>				
10	SBH	GATE 150# FLGD RF 316 S.S.STLITE TRIM GRA PKG	1	1

AREA: CETYL		1"-SBH-03002	
PIPING GA NO: -	P&ID NO: 1003/1004	STRESS CRITICAL: NA	
OP.TEMP: 150°F	OP.PRESS: 25psig	TEST MEDIUM: Hydro	
DES.TEMP: 177°F	DES.PRESS: 150psig	TEST PRESS: 225psig	
SCALE: NONE	INSUL.TYPE: NS-CELLULAR	INSUL.THK: 1	
LINE NO. / FILE NAME: 1"-SBH-03002			ISSUE: R3

SIZE-A3



CONT. ON  
1"-SBH-04001  
E 22'2.5/16"  
N 31'9.11/16"  
EL +9'2.11/16"



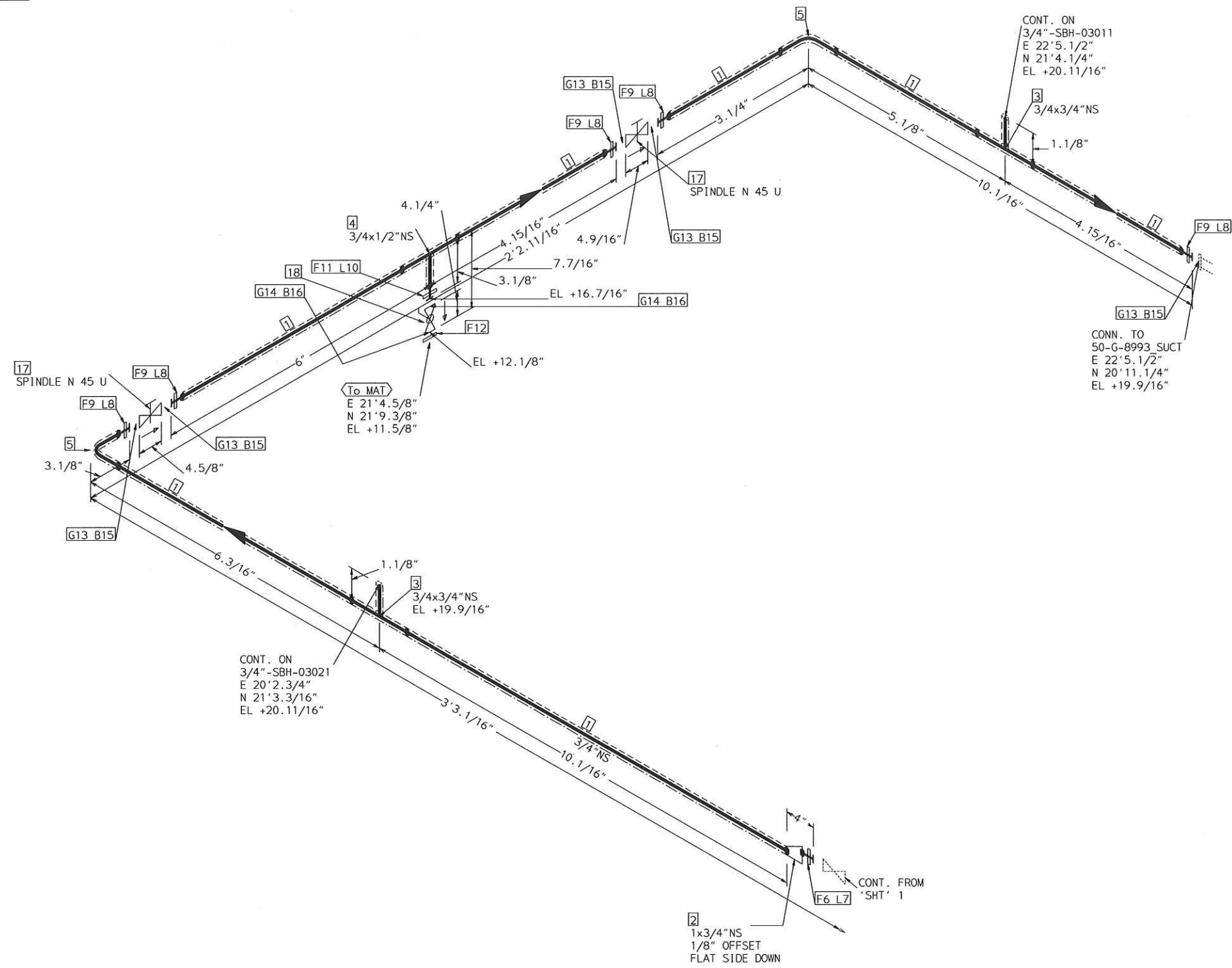
CONT. ON  
'SHT' 2

CONT. ON  
1"-SBH-03002  
E 20'2.3/4"  
N 18'6.5/16"  
EL +2'0.3/16"

TRACING SPEC: S-TRACING (NOTE-10)

FABRICATION MATERIALS				
PT NO	SPEC	COMPONENT DESCRIPTION	N.S.	QTY
PIPE				
1	SBH	PIPE SMLS BE ASME B36.19 SCH10S ASTM A312 GR. TP304	1	22.4'
FITTINGS				
2	SBH	TEE SCH 10S STN.STL A403 SS304 BW	1 x 1	1
3	SBH	ELL 90 DEG LR SCH 10S STN.STL A403 SS304 BW	1	5
FLANGES				
4	SBH	STUB-END 150# RF MSS SP 43 SCH10S TYPE A (SHORT PATTERN LENGTH) BW	1	1
5	SBH	FLG LAP JOINT 150# FF STL A105	1	1
ERECTION MATERIALS				
PT NO	SPEC	COMPONENT DESCRIPTION	N.S.	QTY
FITTINGS				
6	SUPP	SPS-2 RESTING SUPPORT	1	2
7	SUPP	SPS13A TRUNNION SUPPORT	1	1
GASKETS				
8	SBH	GASKET 150# 1/8" 316 SPRL WND W/FLEXICARB TYPE CG	1	2
BOLTS				
9	SBH	2.9/16 x 1/2" STUD BOLT A307 GR B / 2 A307 GR B NUTS	9/16	8
VALVES / IN-LINE ITEMS				
10	SBH	GATE 150# FLGD RF 316 S.S.STLITE TRIM GRA PKG	1	1

AREA: CETYL		1"-SBH-03008	
PIPING GA NO: -	P&ID NO: 1003/1004	STRESS CRITICAL: NA	
OP. TEMP: 150°F	OP. PRESS: 25psig	TEST MEDIUM: Hydro	
DES. TEMP: 177°F	DES. PRESS: 150psig	TEST PRESS: 225psig	
SCALE: NONE	INSUL. TYPE: NS-CELLULAR	INSUL. THK: 1	
LINE NO. / FILE NAME: 1"-SBH-03008	ISSUE: R3		SIZE-A3



CONT. ON  
3/4"-SBH-03011  
E 22'5.1/2"  
N 21'4.1/4"  
EL +20.11/16"

CONN. TO  
50-G-8993 SUCT  
E 22'5.1/2"  
N 20'11.1/4"  
EL +19.9/16"

CONT. ON  
3/4"-SBH-03021  
E 20'2.3/4"  
N 21'3.3/16"  
EL +20.11/16"

2  
1x3/4"NS  
1/8" OFFSET  
FLAT SIDE DOWN

CONT. FROM  
'SHT' 1

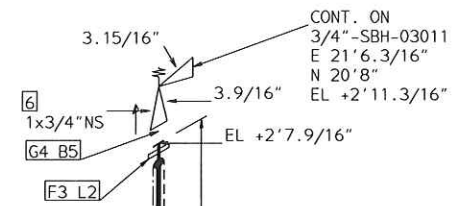
TRACING SPEC: S-TRACING (NOTE-10)

FABRICATION MATERIALS				
PT NO	SPEC	COMPONENT DESCRIPTION	N.S.	QTY
<b>PIPE</b>				
1	SBH	PIPE SMLS BE ASME B36.19 SCH10S ASTM A312 GR. TP304	3/4	1.9'
<b>FITTINGS</b>				
2	SBH	REDUCER ECC SCH 10S STN.STL A403 SS304 BW	1 x 3/4	1
3	SBH	TEE SCH 10S STN.STL A403 SS304 BW	3/4 x 3/4	2
4	SBH	TEE SCH 10S STN.STL A403 SS304 BW	3/4 x 1/2	1
5	SBH	ELL 90 DEG LR SCH 10S STN.STL A403 SS304 BW	3/4	2
<b>FLANGES</b>				
6	SBH	FLG LAP JOINT 150# FF STL A105	1	1
7	SBH	STUB-END 150# RF MSS SP 43 SCH10S TYPE A (SHORT PATTERN LENGTH) BW	1	1
8	SBH	STUB-END 150# RF MSS SP 43 SCH10S TYPE A (SHORT PATTERN LENGTH) BW	3/4	5
9	SBH	FLG LAP JOINT 150# FF STL A105	3/4	5
10	SBH	STUB-END 150# RF MSS SP 43 SCH10S TYPE A (SHORT PATTERN LENGTH) BW	1/2	1
11	SBH	FLG LAP JOINT 150# FF STL A105	1/2	1
12	SBH	FLG BLIND 150# RF STL ASTM A182 GR.F304	1/2	1
ERECTION MATERIALS				
PT NO	SPEC	COMPONENT DESCRIPTION	N.S.	QTY
<b>GASKETS</b>				
13	SBH	GASKET 150# 1/8" 316 SPRL WND W/FLEXICARB TYPE CG	3/4	5
14	SBH	GASKET 150# 1/8" 316 SPRL WND W/FLEXICARB TYPE CG	1/2	2
<b>BOLTS</b>				
15	SBH	2.9/16 x1/2" STUD BOLT A307 GR B/ 2 A307 GR B NUTS	9/16	20
16	SBH	2.3/8 x1/2" STUD BOLT A307 GR B/ 2 A307 GR B NUTS	9/16	8
<b>VALVES / IN-LINE ITEMS</b>				
17	SBH	GATE 150# FLGD RF 316 S.S.STLITE TRIM GRA PKG	3/4	2
18	SBH	BALL 150# FLGD; RF; 316 S.S.; 2 PC; FULL PORT	1/2	1

AREA: CETYL		1"-SBH-03008	
PIPING GA NO: -	P&ID NO: 1003/1004	STRESS CRITICAL: NA	
OP.TEMP: 150°F	OP.PRESS: 25psig	TEST MEDIUM: Hydro	
DES.TEMP: 177°F	DES.PRESS: 150psig	TEST PRESS: 225psig	
SCALE: NONE	INSUL.TYPE: NS-CELLULAR	INSUL.THK: 1	
LINE NO. / FILE NAME: 1"-SBH-03008			ISSUE: R3

SIZE-A3



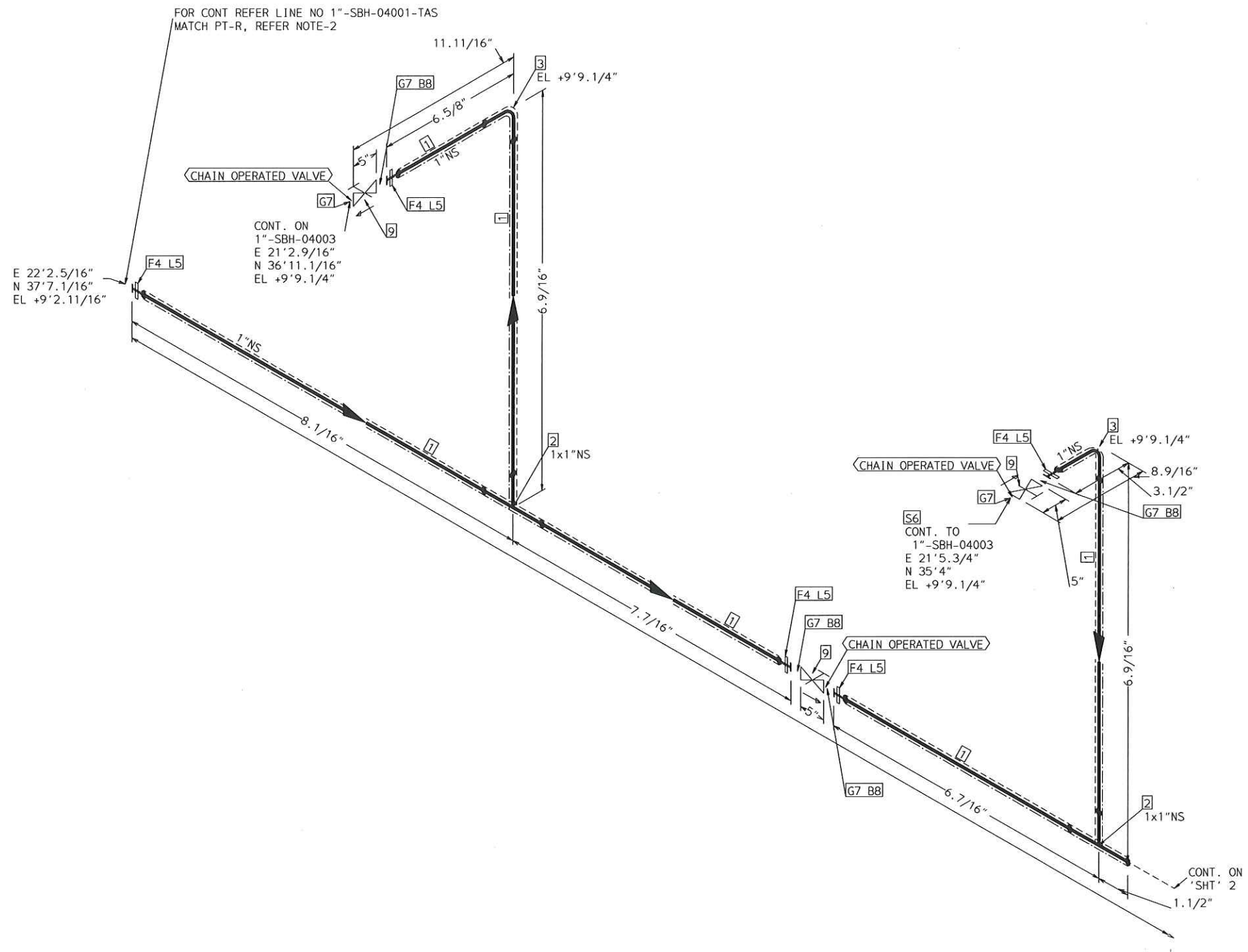


CONT. ON  
1/2"-SBH-03003  
E 21'2.1/4"  
N 20'8"  
EL +20.11/16"

FABRICATION MATERIALS				
PT NO	SPEC	COMPONENT DESCRIPTION	N.S.	QTY
1	SBH	PIPE	3/4	0.8'
		PIPE SMLS BE ASME B36.19 SCH10S ASTM A312 GR. TP304		
2	SBH	FLANGES	3/4	1
		STUB-END 150# RF MSS SP 43 SCH10S TYPE A (SHORT PATTERN LENGTH) BW		
3	SBH	FLG LAP JOINT 150# FF STL A105	3/4	1
ERECTION MATERIALS				
PT NO	SPEC	COMPONENT DESCRIPTION	N.S.	QTY
4	SBH	GASKETS	3/4	1
		GASKET 150# 1/8" 316 SPRL WND W/FLEXICARB TYPE CG		
5	SBH	BOLTS	9/16	4
		2.9/16 x1/2" STUD BOLT A307 GR B/ 2 A307 GR B NUTS		
6	SBH	INSTRUMENTS	1 x 3/4	1
		RELIEF VALVE .05.16		

TRACING SPEC: S-TRACING (NOTE-10)

AREA: CETYL		1"-SBH-03010	
PIPING GA NO:	P&ID NO: 1003	STRESS CRITICAL: NA	
OP. TEMP: 150°F	OP. PRESS: 25psig	TEST MEDIUM: Hydro	
DES. TEMP: 177°F	DES. PRESS: 150psig	TEST PRESS: 225psig	
SCALE: NONE	INSUL. TYPE: NS-CELLULAR	INSUL. THK: unset	
LINE NO. / FILE NAME: 1"-SBH-03010			ISSUE: R3

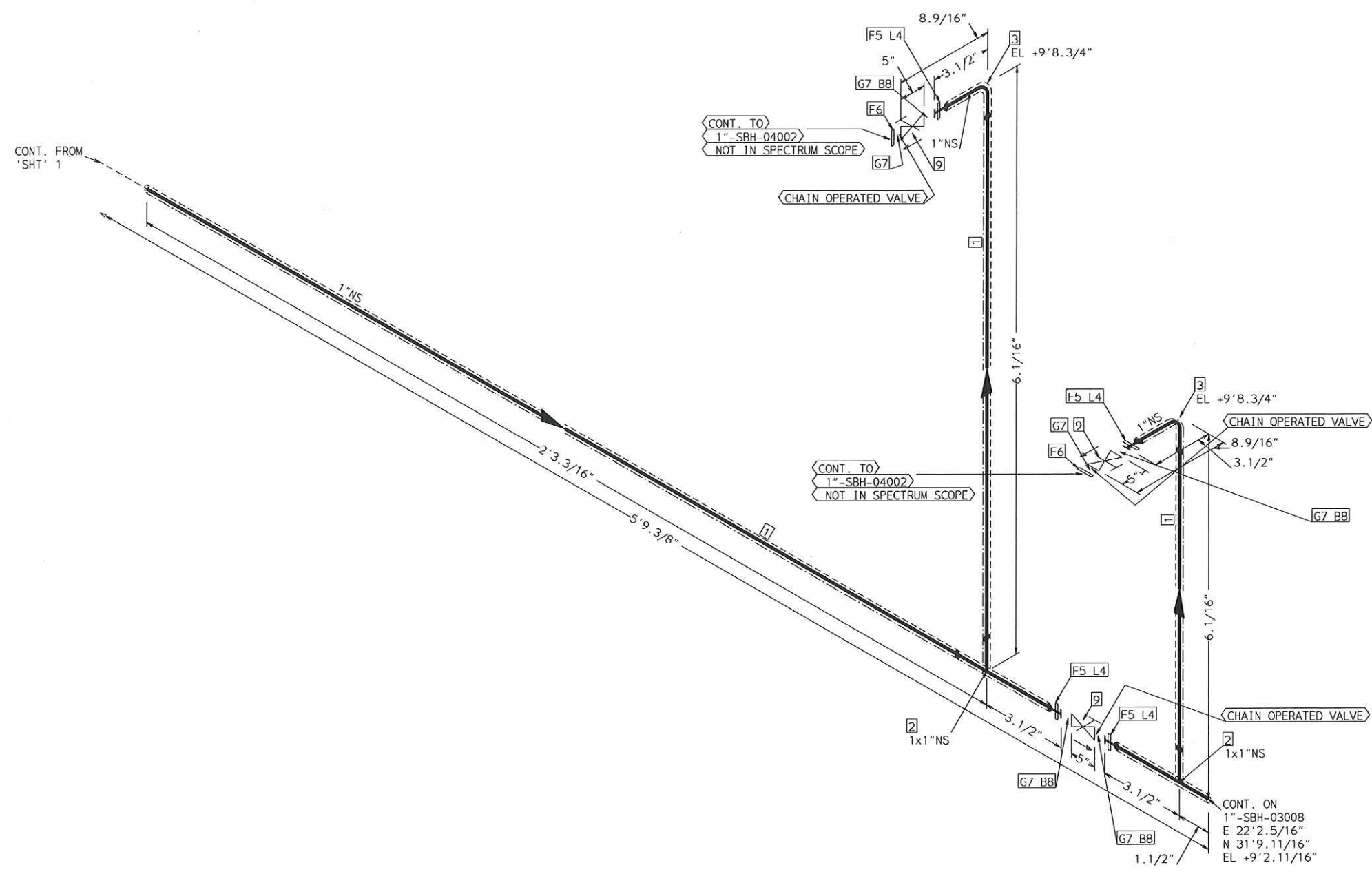
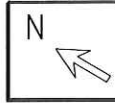


TRACING SPEC: S-TRACING (NOTE-10)

FABRICATION MATERIALS				
PT NO	SPEC	COMPONENT DESCRIPTION	N.S.	QTY
1	SBH	PIPE		
		PIPE SMLS BE ASME B36.19 SCH10S ASTM A312 GR. TP304	1	1.9'
2	SBH	FITTINGS		
		TEE SCH 10S STN. STL A403 SS304 BW	1 x 1	2
3	SBH	ELL 90 DEG LR SCH 10S STN. STL A403 SS304 BW	1	2
4	SBH	FLANGES		
		FLG LAP JOINT 150# FF STL A105 STUB-END 150# RF MSS SP 43 SCH10S TYPE A (SHORT PATTERN LENGTH) BW	1	5
5	SBH	STUB-END 150# RF MSS SP 43 SCH10S TYPE A (SHORT PATTERN LENGTH) BW	1	5
6	SBH	SUPPORTS		
		General purpose ATTA	1	1
ERECTION MATERIALS				
PT NO	SPEC	COMPONENT DESCRIPTION	N.S.	QTY
7	SBH	GASKETS		
		GASKET 150# 1/8" 316 SPRL WND W/FLEXICARB TYPE CG	1	6
8	SBH	BOLTS		
		2.9/16 x 1/2" STUD BOLT A307 GR B/ 2 A307 GR B NUTS	9/16	16
9	SBH	VALVES / IN-LINE ITEMS		
		GATE 150# FLGD RF 316 S.S. STLITE TRIM GRA PKG	1	3

AREA: CETYL		1"-SBH-04001	
PIPING GA NO:	P&ID NO: 1004	STRESS CRITICAL: NA	
OP. TEMP: 176°F	OP. PRESS: 30psig	TEST MEDIUM: Hydro	
DES. TEMP: 203°F	DES. PRESS: 150psig	TEST PRESS: 225psig	
SCALE: NONE	INSUL. TYPE: NS-CELLULAR	INSUL. THK: 2	
LINE NO. / FILE NAME: 1"-SBH-04001			ISSUE: R3

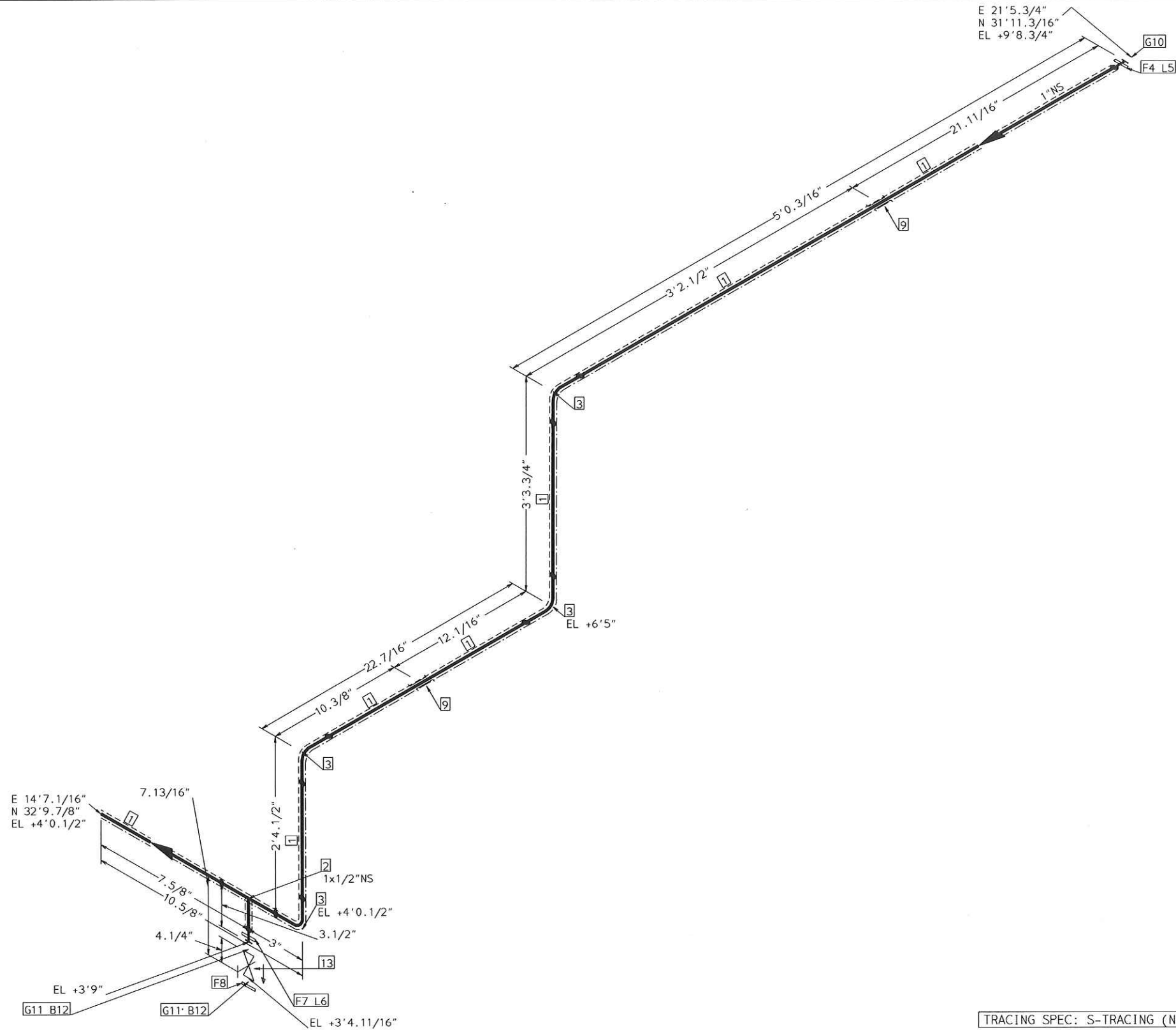
SIZE-A3



TRACING SPEC: S-TRACING (NOTE-10)

FABRICATION MATERIALS				
PT NO	SPEC	COMPONENT DESCRIPTION	N.S.	QTY
<b>PIPE</b>				
1	SBH	PIPE SMLS BE ASME B36.19 SCH10S ASTM A312 GR. TP304	1	2.7'
<b>FITTINGS</b>				
2	SBH	TEE SCH 10S STN.STL A403 SS304 BW	1 x 1	2
3	SBH	ELL 90 DEG LR SCH 10S STN.STL A403 SS304 BW	1	2
<b>FLANGES</b>				
4	SBH	STUB-END 150# RF MSS SP 43 SCH10S TYPE A (SHORT PATTERN LENGTH) BW	1	4
5	SBH	FLG LAP JOINT 150# FF STL A105	1	4
6	SBH	FLG BLIND 150# RF STL ASTM A182 GR.F304	1	2
ERECTION MATERIALS				
PT NO	SPEC	COMPONENT DESCRIPTION	N.S.	QTY
<b>GASKETS</b>				
7	SBH	GASKET 150# 1/8" 316 SPRL WND W/FLEXICARB TYPE CG	1	6
<b>BOLTS</b>				
8	SBH	2.9/16 x 1/2" STUD BOLT A307 GR B / 2 A307 GR B NUTS	9/16	16
<b>VALVES / IN-LINE ITEMS</b>				
9	SBH	GATE 150# FLGD RF 316 S.S.STLITE TRIM GRA PKG	1	3

AREA: CETYL		1" - SBH-04001	
PIPING GA NO:	P&ID NO: 1004	STRESS CRITICAL: NA	
OP. TEMP: 176°F	OP. PRESS: 30psig	TEST MEDIUM: Hydro	
DES. TEMP: 203°F	DES. PRESS: 150psig	TEST PRESS: 225psig	
SCALE: NONE	INSUL. TYPE: NS-CELLULAR	INSUL. THK: 2	
LINE NO. / FILE NAME: 1" - SBH-04001	ISSUE: R3		SIZE-A3

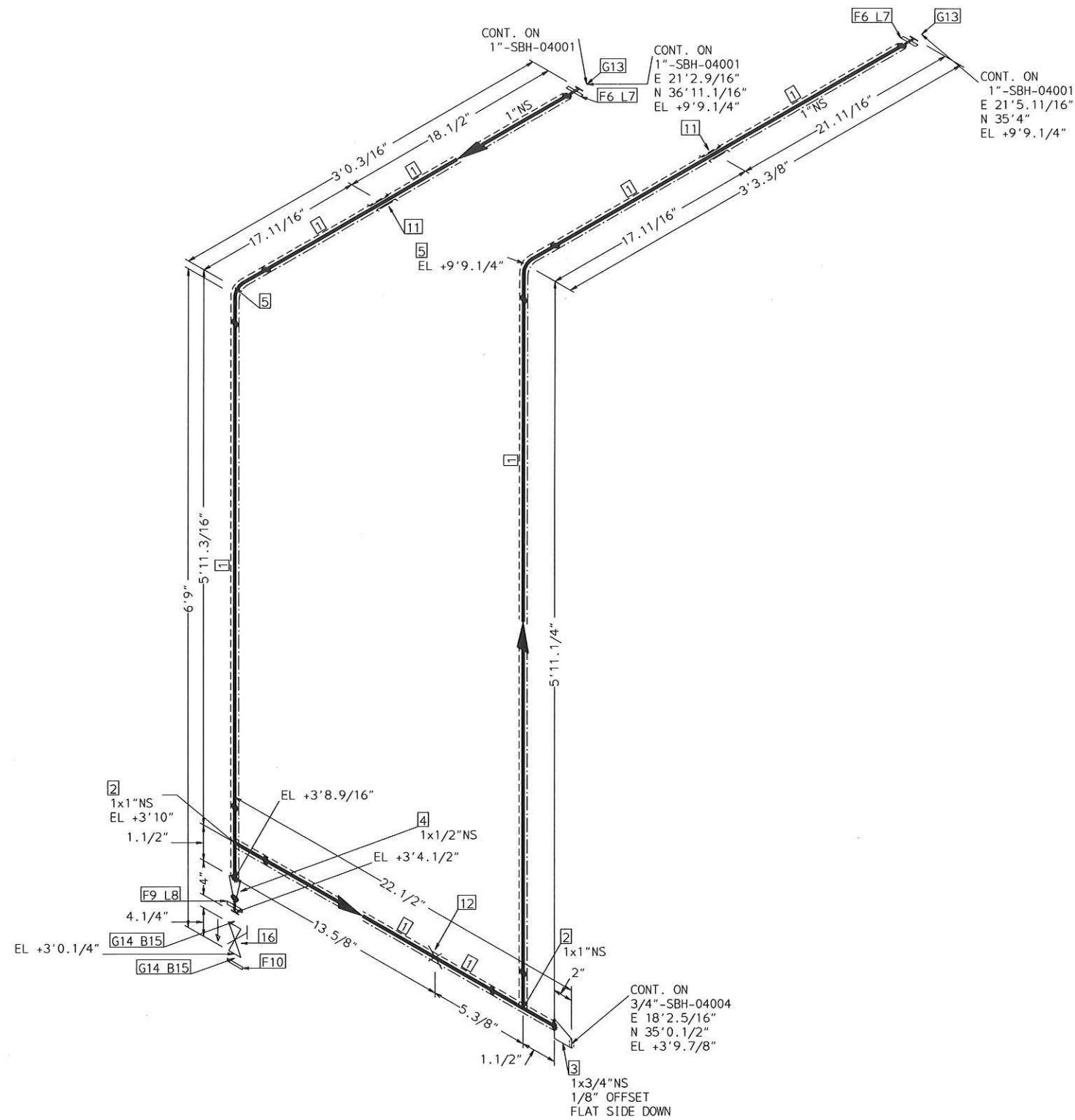


FABRICATION MATERIALS				
PT NO	SPEC	COMPONENT DESCRIPTION	N.S.	QTY
1	SBH	PIPE	1	12.1'
		PIPE SMLS BE ASME B36.19 SCH10S ASTM A312 GR. TP304		
2	SBH	FITTINGS	1 x 1/2	1
		TEE SCH 10S STN.STL A403 SS304 BW		
		ELL 90 DEG LR SCH 10S STN.STL A403 SS304 BW		
4	SBH	FLANGES	1	1
		FLG LAP JOINT 150# FF STL A105		
5	SBH	STUB-END 150# RF MSS SP 43 SCH10S TYPE A (SHORT PATTERN LENGTH) BW	1	1
		STUB-END 150# RF MSS SP 43 SCH10S TYPE A (SHORT PATTERN LENGTH) BW		
6	SBH	STUB-END 150# RF MSS SP 43 SCH10S TYPE A (SHORT PATTERN LENGTH) BW	1/2	1
7	SBH	FLG LAP JOINT 150# FF STL A105	1/2	1
8	SBH	FLG BLIND 150# RF STL ASTM A182 GR.F304	1/2	1
ERECTION MATERIALS				
PT NO	SPEC	COMPONENT DESCRIPTION	N.S.	QTY
9	SUPP	FITTINGS	1	2
		SPS-2G GUIDE SUPPORT		
10	SBH	GASKETS	1	1
		GASKET 150# 1/8" 316 SPRL WND W/FLEXICARB TYPE CG		
11	SBH	GASKET 150# 1/8" 316 SPRL WND W/FLEXICARB TYPE CG	1/2	2
12	SBH	BOLTS	9/16	8
		2.3/8 x1/2" STUD BOLT A307 GR B/ 2 A307 GR B NUTS		
13	SBH	VALVES / IN-LINE ITEMS	1/2	1
		GATE 150# FLGD RF 316 S.S.STLITE TRIM GRA PKG		

TRACING SPEC: S-TRACING (NOTE-10)

AREA: CETYL		1"-SBH-04002	
PIPING GA NO:	P&ID NO: 1004	STRESS CRITICAL: NA	
OP.TEMP: 150	OP.PRESS: 25psig	TEST MEDIUM: Hydro	
DES.TEMP: 177	DES.PRESS: 150	TEST PRESS: 225	
SCALE: NONE	INSUL.TYPE: NS-CELLULAR	INSUL.THK: 1	
LINE NO. / FILE NAME: 1"-SBH-04002	ISSUE: R3		SIZE-A3





TRACING SPEC: S-TRACING (NOTE-10)

FABRICATION MATERIALS

PT NO	SPEC	COMPONENT DESCRIPTION	N.S.	QTY
<u>PIPE</u>				
1	SBH	PIPE SMLS BE ASME B36.19 SCH10S ASTM A312 GR. TP304	1	18.5'
<u>FITTINGS</u>				
2	SBH	TEE SCH 10S STN.STL A403 SS304 BW	1 x 1	2
3	SBH	REDUCER ECC SCH 10S STN.STL A403 SS304 BW	1 x 3/4	1
4	SBH	REDUCER CONC SCH 10S STN.STL A403 SS304 BW	1 x 1/2	1
5	SBH	ELL 90 DEG LR SCH 10S STN.STL A403 SS304 BW	1	2
<u>FLANGES</u>				
6	SBH	FLG LAP JOINT 150# FF STL A105	1	2
7	SBH	STUB-END 150# RF MSS SP 43 SCH10S TYPE A (SHORT PATTERN LENGTH) BW	1	2
8	SBH	STUB-END 150# RF MSS SP 43 SCH10S TYPE A (SHORT PATTERN LENGTH) BW	1/2	1
9	SBH	FLG LAP JOINT 150# FF STL A105	1/2	1
10	SBH	FLG BLIND 150# RF STL ASTM A182 GR.F304	1/2	1

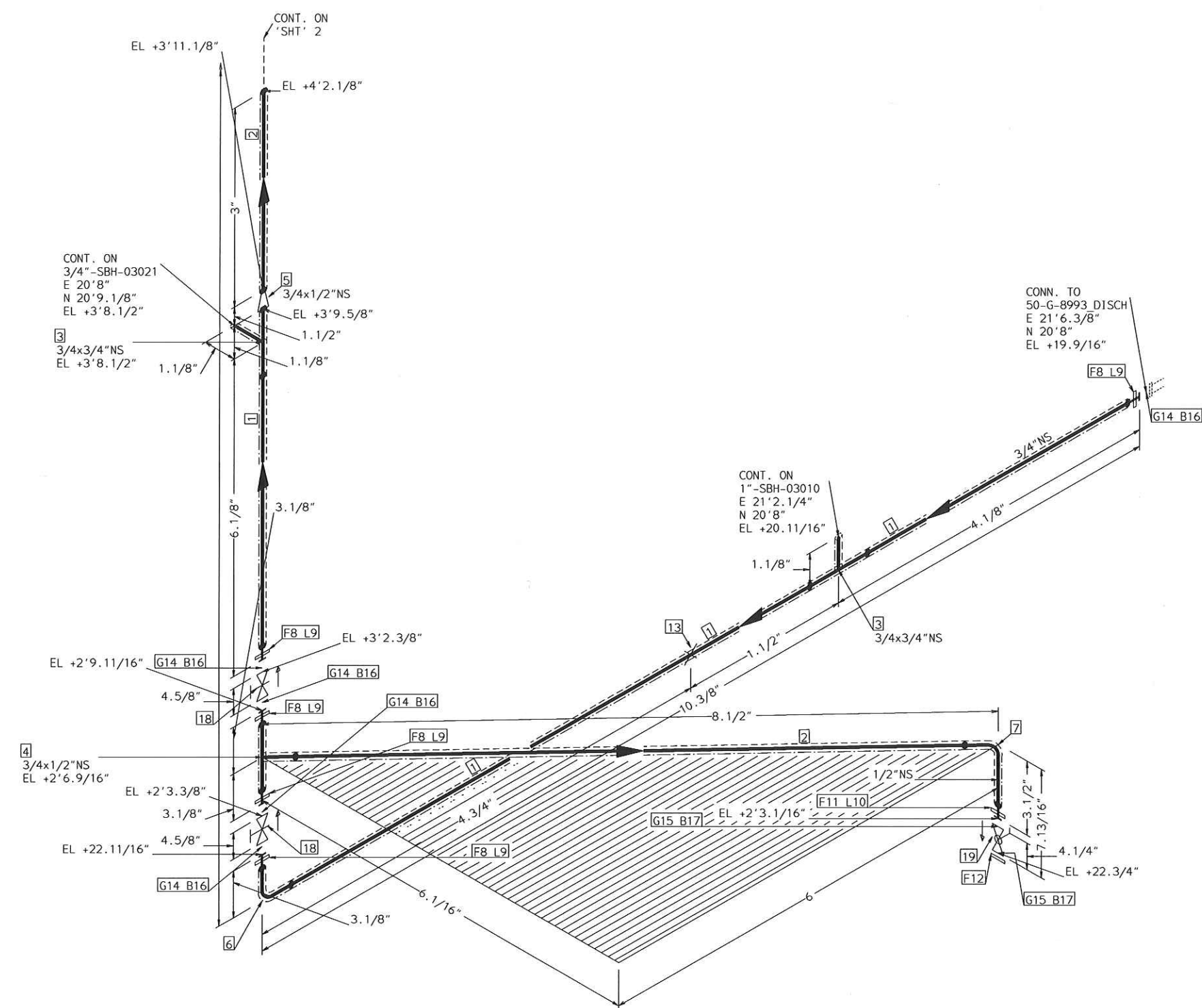
ERECTION MATERIALS

PT NO	SPEC	COMPONENT DESCRIPTION	N.S.	QTY
<u>FITTINGS</u>				
11	SUPP	SPS-2G GUIDE SUPPORT	1	2
12	SUPP	SPS-2 RESTING SUPPORT	1	1
<u>GASKETS</u>				
13	SBH	GASKET 150# 1/8" 316 SPRL WND W/FLEXICARB TYPE CG	1	2
14	SBH	GASKET 150# 1/8" 316 SPRL WND W/FLEXICARB TYPE CG	1/2	2
<u>BOLTS</u>				
15	SBH	2.3/8 x 1/2" STUD BOLT A307 GR B/ 2 A307 GR B NUTS	9/16	8
<u>VALVES / IN-LINE ITEMS</u>				
16	SBH	GATE 150# FLGD RF 316 S.S.STLITE TRIM GRA PKG	1/2	1

AREA: CETYL		1"-SBH-04003	
PIPING GA NO:	P&ID NO: 1004	STRESS CRITICAL:	
OP.TEMP: 176°F	OP.PRESS: 30psig	TEST MEDIUM: Hydro	
DES.TEMP: 203°F	DES.PRESS: 150psig	TEST PRESS: 225psig	
SCALE: NONE	INSUL.TYPE: NS-CELLULAR	INSUL.THK: 2	
LINE NO. / FILE NAME: 1"-SBH-04003			ISSUE: R3

SIZE-A3





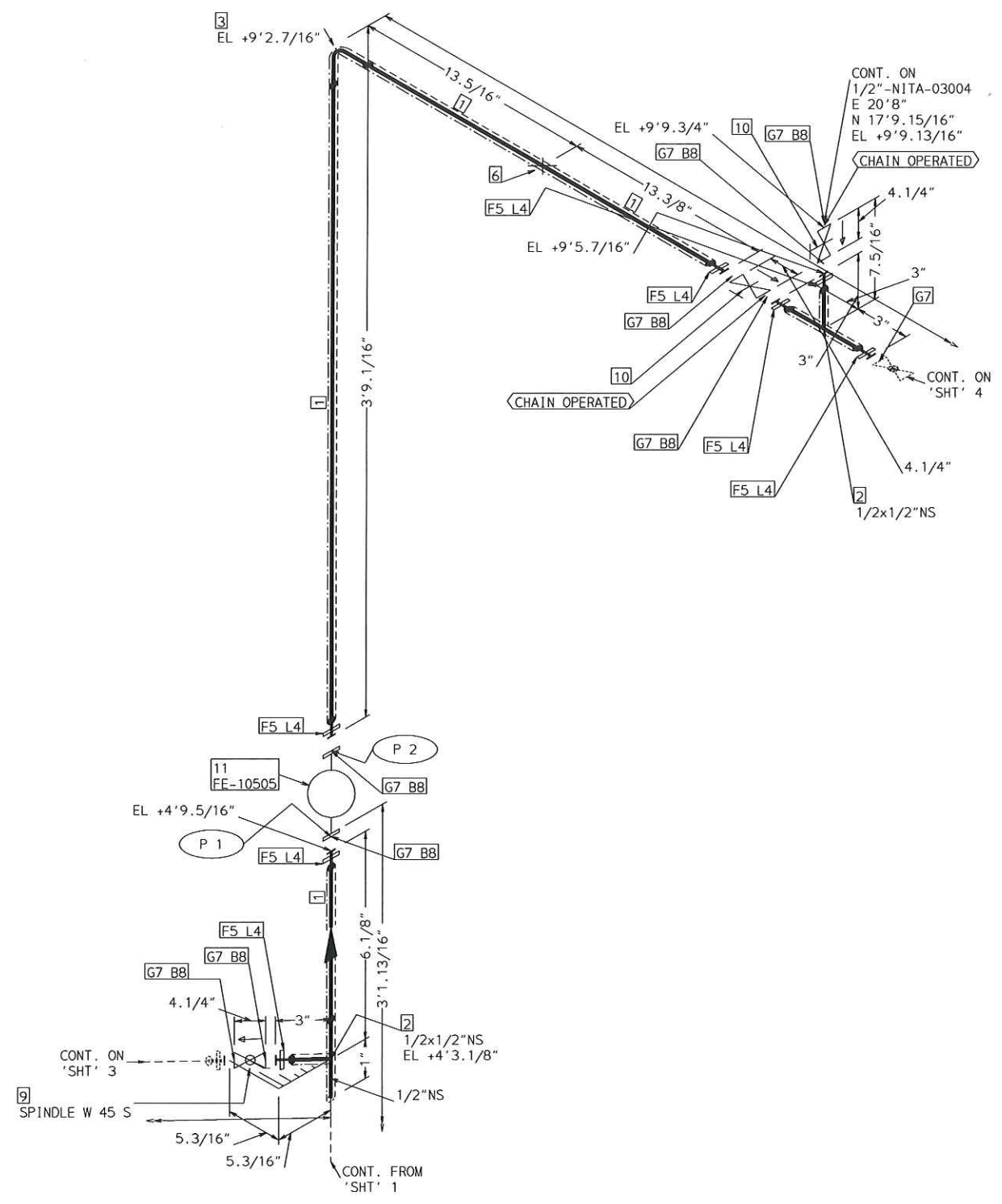
TRACING SPEC: S-TRACING (NOTE-10)

FABRICATION MATERIALS				
PT NO	SPEC	COMPONENT DESCRIPTION	N.S.	QTY
<b>PIPE</b>				
1	SBH	PIPE SMLS BE ASME B36.19 SCH10S ASTM A312 GR. TP304	3/4	0.7'
2	SBH	PIPE SMLS BE ASME B36.19 SCH10S ASTM A312 GR. TP304	1/2	0.8'
<b>FITTINGS</b>				
3	SBH	TEE SCH 10S STN. STL A403 SS304 BW	3/4 x 3/4	2
4	SBH	TEE SCH 10S STN. STL A403 SS304 BW	3/4 x 1/2	1
5	SBH	REDUCER CONC SCH 10S STN. STL A403 SS304 BW	3/4 x 1/2	1
6	SBH	ELL 90 DEG LR SCH 10S STN. STL A403 SS304 BW	3/4	1
7	SBH	ELL 90 DEG LR SCH 10S STN. STL A403 SS304 BW	1/2	1
<b>FLANGES</b>				
8	SBH	FLG LAP JOINT 150# FF STL A105	3/4	5
9	SBH	STUB-END 150# RF MSS SP 43 SCH10S TYPE A (SHORT PATTERN LENGTH) BW	3/4	5
10	SBH	STUB-END 150# RF MSS SP 43 SCH10S TYPE A (SHORT PATTERN LENGTH) BW	1/2	1
11	SBH	FLG LAP JOINT 150# FF STL A105	1/2	1
12	SBH	FLG BLIND 150# RF STL ASTM A182 GR. F304	1/2	1

ERECTION MATERIALS				
PT NO	SPEC	COMPONENT DESCRIPTION	N.S.	QTY
<b>FITTINGS</b>				
13	SUPP	SPS-2 RESTING SUPPORT	3/4	1
<b>GASKETS</b>				
14	SBH	GASKET 150# 1/8" 316 SPRL WND W/FLEXICARB TYPE CG	3/4	5
15	SBH	GASKET 150# 1/8" 316 SPRL WND W/FLEXICARB TYPE CG	1/2	2
<b>BOLTS</b>				
16	SBH	2.9/16 x 1/2" STUD BOLT A307 GR B/ 2 A307 GR B NUTS	9/16	20
17	SBH	2.3/8 x 1/2" STUD BOLT A307 GR B/ 2 A307 GR B NUTS	9/16	8
<b>VALVES / IN-LINE ITEMS</b>				
18	SBH	GATE 150# FLGD RF 316 S.S. STLITE TRIM GRA PKG	3/4	2
19	SBH	BALL 150# FLGD; RF; 316 S.S.; 2 PC; FULL PORT	1/2	1

AREA: CETYL	1/2"-SBH-03003	
PIPING GA NO: -	P&ID NO: 1003	STRESS CRITICAL: NA
OP. TEMP: 150°F	OP. PRESS: 25psig	TEST MEDIUM: Hydro
DES. TEMP: 177°F	DES. PRESS: 150psig	TEST PRESS: 225psig
SCALE: NONE	INSUL. TYPE: NS-CELLULAR	INSUL. THK: 1
LINE NO. / FILE NAME: 1/2"-SBH-03003	ISSUE: R3	

SIZE-A3

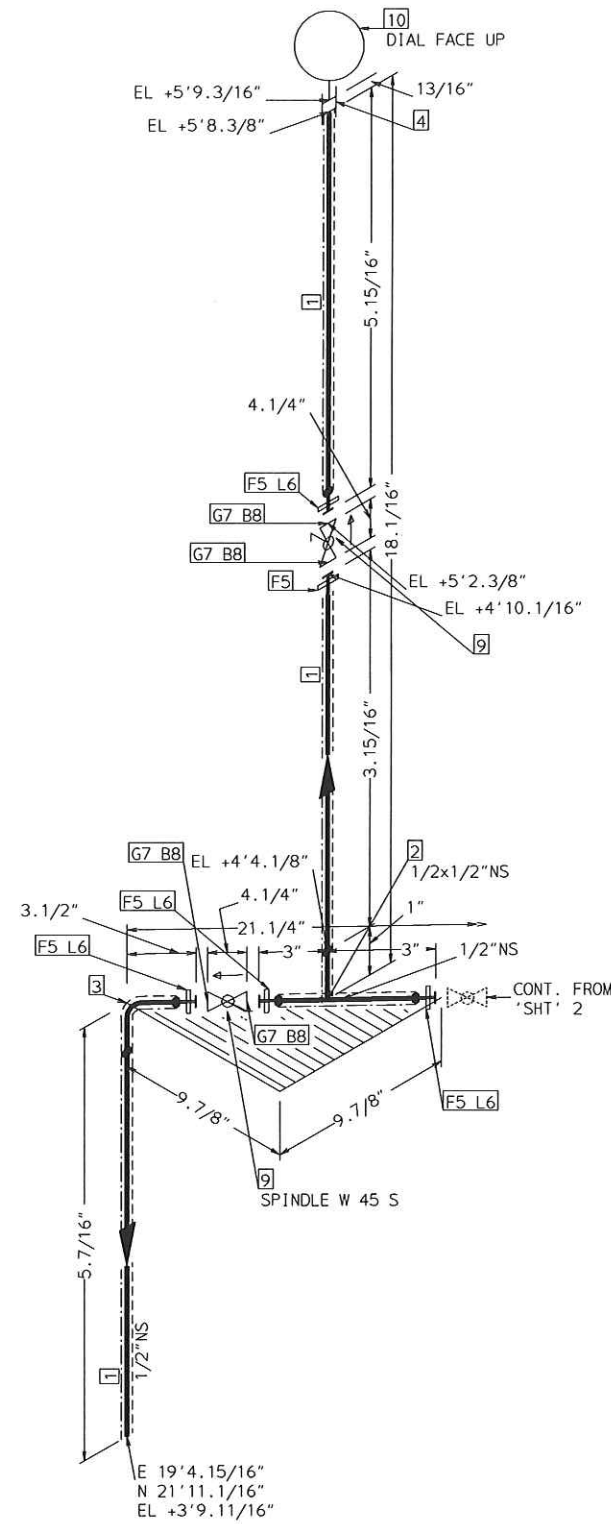


FABRICATION MATERIALS				
PT NO	SPEC	COMPONENT DESCRIPTION	N.S.	QTY
1	SBH	PIPE		
		PIPE SMLS BE ASME B36.19 SCH10S ASTM A312 GR. TP304	1/2	5.7'
2	SBH	FITTINGS		
		TEE SCH 10S STN.STL A403 SS304 BW	1/2 x 1/2	2
3	SBH	ELL 90 DEG LR SCH 10S STN.STL A403 SS304 BW	1/2	1
4	SBH	FLANGES		
		STUB-END 150# RF MSS SP 43 SCH10S TYPE A (SHORT PATTERN LENGTH) BW	1/2	7
5	SBH	FLG LAP JOINT 150# FF STL A105	1/2	7
ERECTION MATERIALS				
PT NO	SPEC	COMPONENT DESCRIPTION	N.S.	QTY
6	SUPP	FITTINGS		
		SPS-2 RESTING SUPPORT	1/2	1
7	SBH	GASKETS		
		GASKET 150# 1/8" 316 SPRL WND W/FLEXICARB TYPE CG	1/2	9
8	SBH	BOLTS		
		2.3/8 x 1/2" STUD BOLT A307 GR B/ 2 A307 GR B NUTS	9/16	32
9	SBH	VALVES / IN-LINE ITEMS		
		BALL 150# FLGD; RF; 316 S.S.; 2 PC; FULL PORT	1/2	1
10	SBH	GATE 150# FLGD RF 316 S.S.STLITE TRIM GRA PKG	1/2	2
11	SBH	INSTRUMENTS		
		MICRO MOTION FLOWMETER 150# RF	1/2	1

TRACING SPEC: S-TRACING (NOTE-10)

AREA: CETYL		1/2"-SBH-03003	
PIPING GA NO: -	P&ID NO: 1003	STRESS CRITICAL: NA	
OP.TEMP: 150°F	OP.PRESS: 25psig	TEST MEDIUM: Hydro	
DES.TEMP: 177°F	DES.PRESS: 150psig	TEST PRESS: 225psig	
SCALE: NONE	INSUL.TYPE: NS-CELLULAR	INSUL.THK: 1	
LINE NO. / FILE NAME: 1/2"-SBH-03003			ISSUE: R3

SIZE-A3



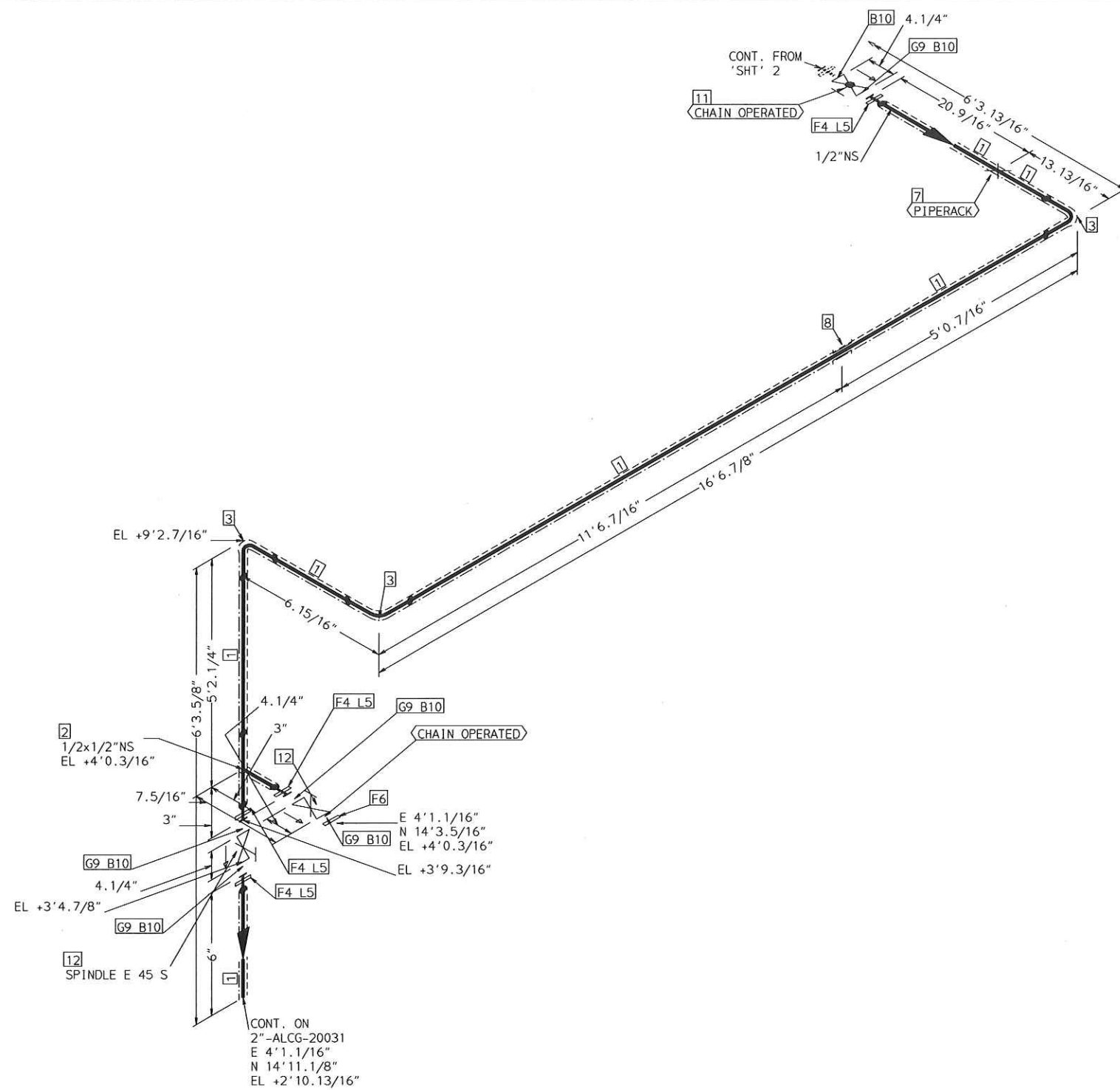
TRACING SPEC: S-TRACING (NOTE-10)

FABRICATION MATERIALS				
PT NO	SPEC	COMPONENT DESCRIPTION	N.S.	QTY
<u>PIPE</u>				
1	SBH	PIPE SMLS BE ASME B36.19 SCH10S ASTM A312 GR. TP304	1/2	1.0'
<u>FITTINGS</u>				
2	SBH	TEE SCH 10S STN.STL A403 SS304 BW	1/2 x 1/2	1
3	SBH	ELL 90 DEG LR SCH 10S STN.STL A403 SS304 BW	1/2	1
4	SBH	COUPLING 3000# SCRCD STN.STL 304	1/2	1
<u>FLANGES</u>				
5	SBH	FLG LAP JOINT 150# FF STL A105	1/2	5
6	SBH	STUB-END 150# RF MSS SP 43 SCH10S TYPE A (SHORT PATTERN LENGTH) BW	1/2	5

ERECTION MATERIALS				
PT NO	SPEC	COMPONENT DESCRIPTION	N.S.	QTY
<u>GASKETS</u>				
7	SBH	GASKET 150# 1/8" 316 SPRL WND W/FLEXICARB TYPE CG	1/2	4
<u>BOLTS</u>				
8	SBH	2.3/8 x 1/2" STUD BOLT A307 GR B / 2 A307 GR B NUTS	9/16	16
<u>VALVES / IN-LINE ITEMS</u>				
9	SBH	BALL 150# FLGD; RF; 316 S.S.; 2 PC; FULL PORT	1/2	2
<u>INSTRUMENTS</u>				
10	SBH	PRESSURE INDICATOR	1/2	1

AREA: CETYL		1/2" - SBH-03003	
PIPING GA NO: -	P&ID NO: 1003	STRESS CRITICAL: NA	
OP. TEMP: 150°F	OP. PRESS: 25psig	TEST MEDIUM: Hydro	
DES. TEMP: 177°F	DES. PRESS: 150psig	TEST PRESS: 225psig	
SCALE: NONE	INSUL. TYPE: NS-CELLULAR	INSUL. THK: 1	
LINE NO. / FILE NAME: 1/2" - SBH-03003	ISSUE: R3		SIZE-A3

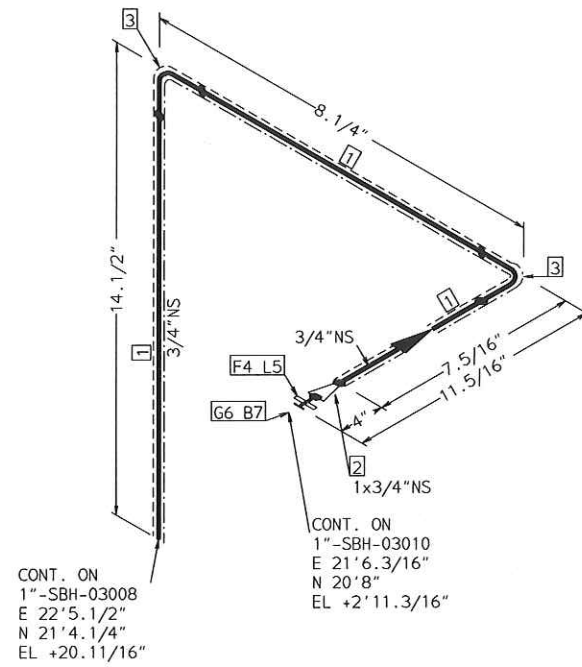




TRACING SPEC: S-TRACING (NOTE-10)

FABRICATION MATERIALS				
PT NO	SPEC	COMPONENT DESCRIPTION	N.S.	QTY
1	SBH	PIPE	1/2	24.6'
		PIPE SMLS BE ASME B36.19 SCH10S ASTM A312 GR. TP304		
2	SBH	FITTINGS	1/2 x	1
		TEE SCH 10S STN. STL A403 SS304 BW		
3	SBH	ELL 90 DEG LR SCH 10S STN. STL A403 SS304 BW	1/2	3
4	SBH	FLANGES	1/2	4
		FLG LAP JOINT 150# FF STL A105 STUB-END 150# RF MSS SP 43 SCH10S TYPE A (SHORT PATTERN LENGTH) BW		
5	SBH	FLG BLIND 150# RF STL ASTM A182 GR. F304	1/2	1
ERECTION MATERIALS				
PT NO	SPEC	COMPONENT DESCRIPTION	N.S.	QTY
7	SUPP	FITTINGS	1/2	1
		SPS-2 RESTING SUPPORT		
8	SUPP	SPS-2G GUIDE SUPPORT	1/2	1
9	SBH	GASKETS	1/2	5
		GASKET 150# 1/8" 316 SPRL WND W/FLEXICARB TYPE CG		
10	SBH	BOLTS	9/16	24
		2.3/8 x 1/2" STUD BOLT A307 GR B/ 2 A307 GR B NUTS		
11	SBH	VALVES / IN-LINE ITEMS	1/2	1
		GLOBE 150# FLGD; RF; 316 S.S.; STLITE TRIM; GRA PKG		
12	SBH	GATE 150# FLGD RF 316 S.S. STLITE TRIM GRA PKG	1/2	2

AREA: CETYL	1/2"-SBH-03003	
PIPING GA NO: -	P&ID NO: 1003	STRESS CRITICAL: NA
OP. TEMP: 150°F	OP. PRESS: 25psig	TEST MEDIUM: Hydro
DES. TEMP: 177°F	DES. PRESS: 150psig	TEST PRESS: 225psig
SCALE: NONE	INSUL. TYPE: NS-CELLULAR	INSUL. THK: 1
LINE NO. / FILE NAME: 1/2"-SBH-03003	ISSUE: R3	

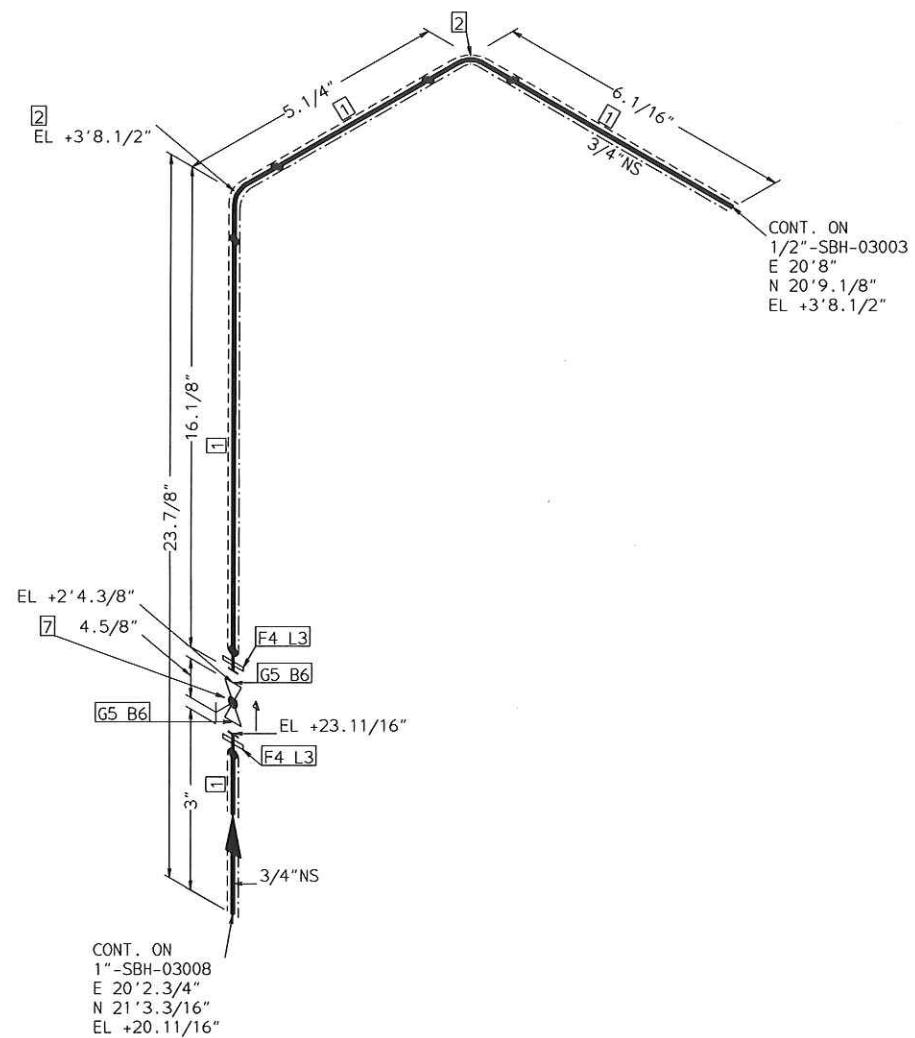
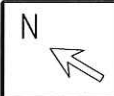


FABRICATION MATERIALS				
PT NO	SPEC	COMPONENT DESCRIPTION	N.S.	QTY
1	SBH	PIPE		
		PIPE SMLS BE ASME B36.19 SCH10S ASTM A312 GR. TP304	3/4	2.2'
FITTINGS				
2	SBH	REDUCER CONC SCH 10S STN.STL A403 SS304 BW	1 x 3/4	1
3	SBH	ELL 90 DEG LR SCH 10S STN.STL A403 SS304 BW	3/4	2
FLANGES				
4	SBH	FLG LAP JOINT 150# FF STL A105	1	1
5	SBH	STUB-END 150# RF MSS SP 43 SCH10S TYPE A (SHORT PATTERN LENGTH) BW	1	1

ERECTION MATERIALS				
PT NO	SPEC	COMPONENT DESCRIPTION	N.S.	QTY
GASKETS				
6	SBH	GASKET 150# 1/8" 316 SPRL WND W/FLEXICARB TYPE CG	1	1
BOLTS				
7	SBH	2.9/16 x1/2" STUD BOLT A307 GR B/ 2 A307 GR B NUTS	9/16	4

TRACING SPEC: S-TRACING (NOTE-10)

AREA: CETYL		3/4"-SBH-03011	
PIPING GA NO:	P&ID NO: 1003	STRESS CRITICAL: NA	
OP. TEMP: 150°F	OP. PRESS: 25psig	TEST MEDIUM: Hydro	
DES. TEMP: 177°F	DES. PRESS: 150psig	TEST PRESS: 225psig	
SCALE: NONE	INSUL. TYPE: NS-CELLULAR	INSUL. THK: 1	
LINE NO. / FILE NAME: 3/4"-SBH-03011	ISSUE: R3		SIZE-A3



FABRICATION MATERIALS				
PT NO	SPEC	COMPONENT DESCRIPTION	N.S.	QTY
<u>PIPE</u>				
1	SBH	PIPE SMLS BE ASME B36.19 SCH10S ASTM A312 GR. TP304	3/4	1.9'
<u>FITTINGS</u>				
2	SBH	ELL 90 DEG LR SCH 10S STN.STL A403 SS304 BW	3/4	2
<u>FLANGES</u>				
3	SBH	STUB-END 150# RF MSS SP 43 SCH10S TYPE A (SHORT PATTERN LENGTH) BW	3/4	2
4	SBH	FLG LAP JOINT 150# FF STL A105	3/4	2
ERECTION MATERIALS				
PT NO	SPEC	COMPONENT DESCRIPTION	N.S.	QTY
<u>GASKETS</u>				
5	SBH	GASKET 150# 1/8" 316 SPRL WND W/FLEXICARB TYPE CG	3/4	2
<u>BOLTS</u>				
6	SBH	2.9/16 x1/2" STUD BOLT A307 GR B/ 2 A307 GR B NUTS	9/16	8
<u>VALVES / IN-LINE ITEMS</u>				
7	SBH	GLOBE 150# FLGD; RF; 316 S.S.; STLITE TRIM; GRA PKG	3/4	1

TRACING SPEC: S-TRACING (NOTE-10)

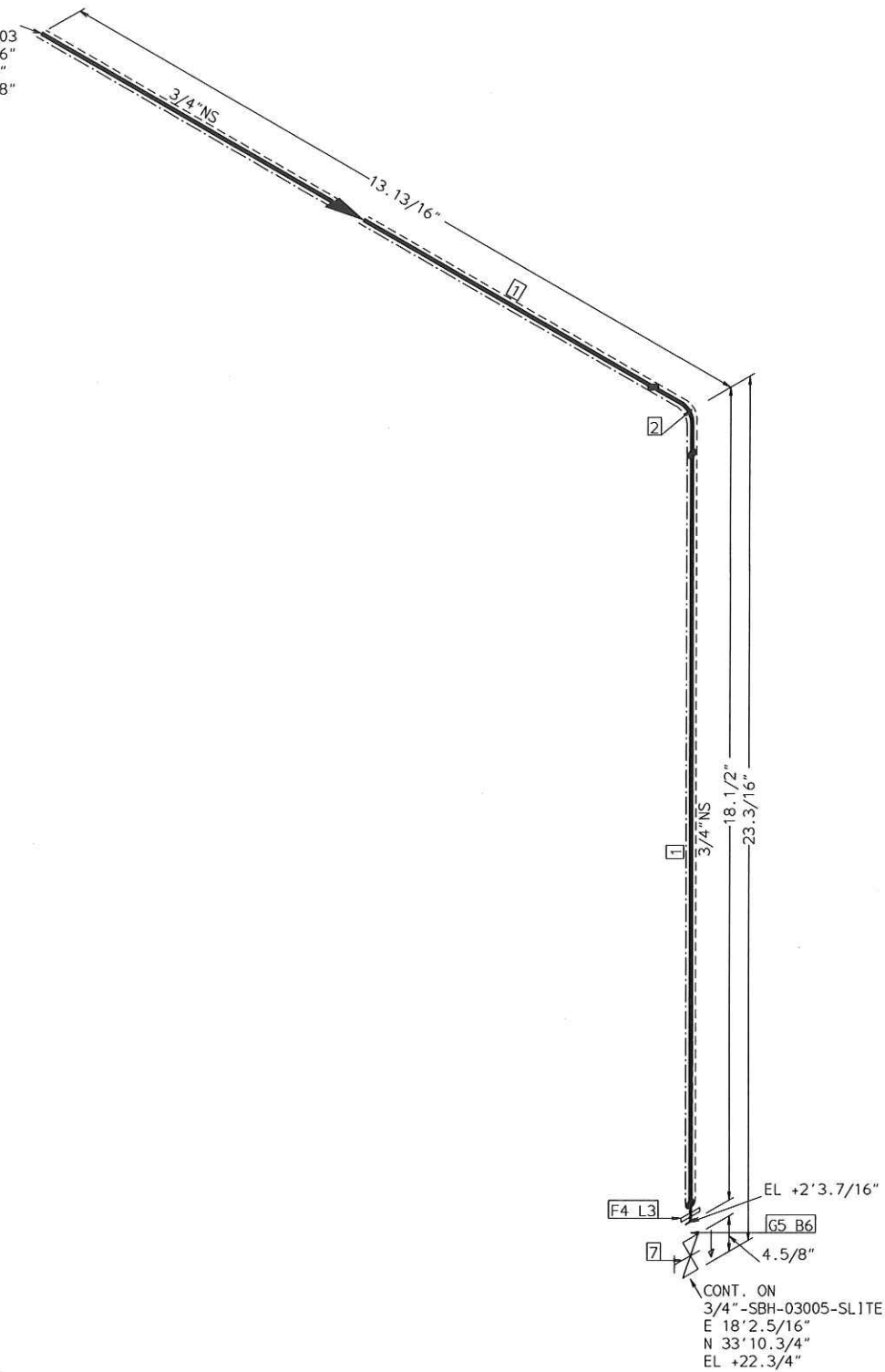
AREA: CETYL		3/4"-SBH-03021	
PIPING GA NO: -	P&ID NO: 1003/1004	STRESS CRITICAL: NA	
OP. TEMP: 150°F	OP. PRESS: 25psig	TEST MEDIUM: Hydro	
DES. TEMP: 177°F	DES. PRESS: 150psig	TEST PRESS: 225psig	
SCALE: NONE	INSUL. TYPE: NS-CELLULAR	INSUL. THK: 1	
LINE NO. / FILE NAME: 3/4"-SBH-03021			ISSUE: R3

SIZE-A3





CONT. ON  
1"-SBH-04003  
E 18'2.5/16"  
N 35'0.1/2"  
EL +3'9.7/8"



CONT. ON  
3/4"-SBH-03005-SLITE  
E 18'2.5/16"  
N 33'10.3/4"  
EL +22.3/4"

TRACING SPEC: S-TRACING (NOTE-10)

FABRICATION MATERIALS				
PT NO	SPEC	COMPONENT DESCRIPTION	N.S.	QTY
1	SBH	PIPE	3/4	2.4'
		PIPE SMLS BE ASME B36.19 SCH10S ASTM A312 GR.TP304		
2	SBH	FITTINGS	3/4	1
		ELL 90 DEG LR SCH 10S STN.STL A403 SS304 BW		
3	SBH	FLANGES	3/4	1
		STUB-END 150# RF MSS SP 43 SCH10S TYPE A (SHORT PATTERN LENGTH) BW		
4	SBH	FLG LAP JOINT 150# FF STL A105	3/4	1
ERECTION MATERIALS				
PT NO	SPEC	COMPONENT DESCRIPTION	N.S.	QTY
5	SBH	GASKETS	3/4	1
		GASKET 150# 1/8" 316 SPRL WND W/FLEXICARB TYPE CG		
6	SBH	BOLTS	9/16	4
		2.9/16 x1/2" STUD BOLT A307 GR B/ 2 A307 GR B NUTS		
7	SBH	VALVES / IN-LINE ITEMS	3/4	1
		GATE 150# FLGD RF 316 S.S.STLITE TRIM GRA PKG		

AREA: CETYL		3/4"-SBH-04004	
PIPING GA NO:	P&ID NO: 1004	STRESS CRITICAL:	
OP.TEMP: 176°F	OP.PRESS: 30psig	TEST MEDIUM: Hydro	
DES.TEMP: 203°F	DES.PRESS: 150psig	TEST PRESS: 225psig	
SCALE: NONE	INSUL.TYPE: NS-CELLULAR	INSUL.THK: 2	
LINE NO. / FILE NAME: 3/4"-SBH-04004			ISSUE: R3