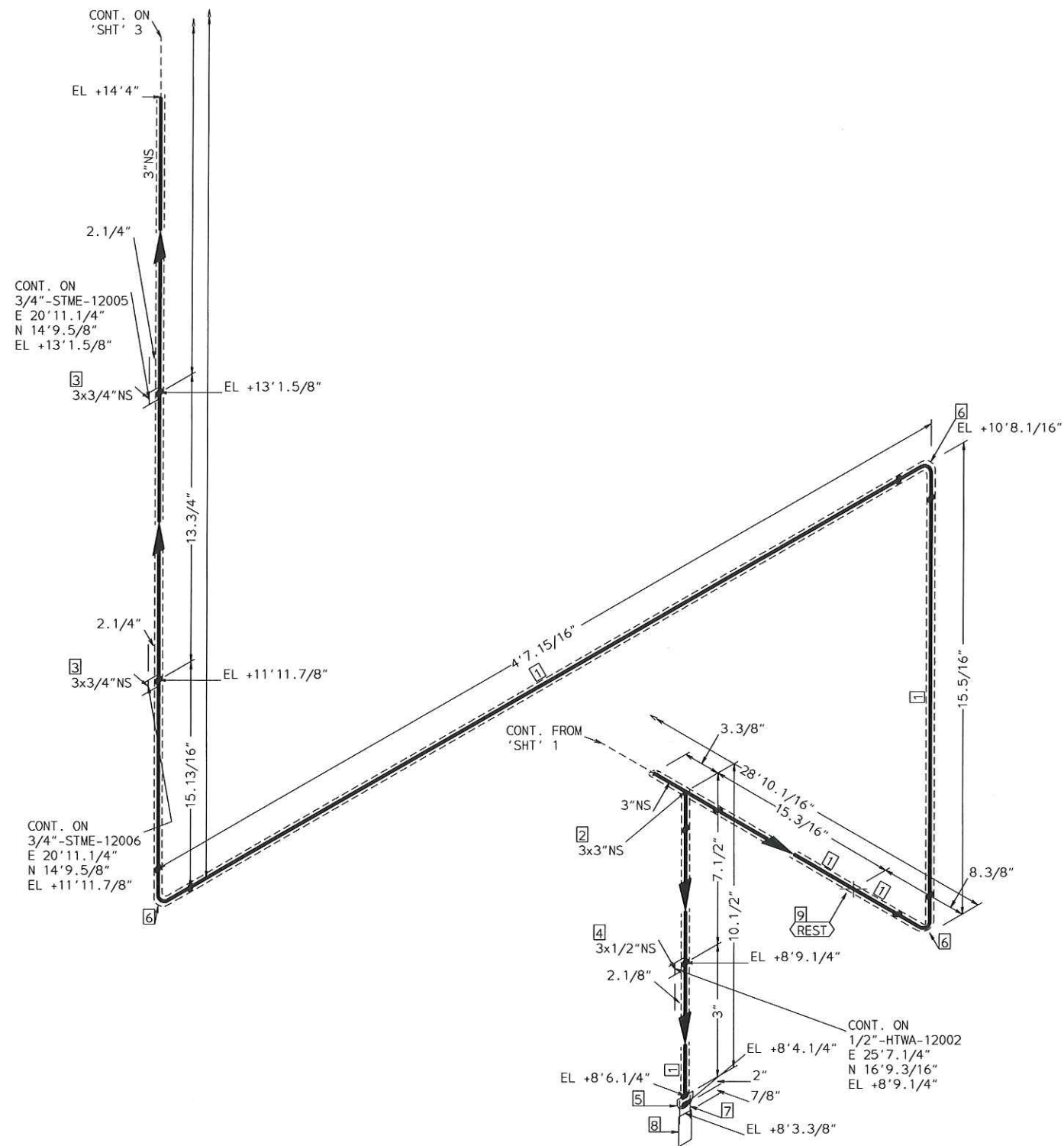
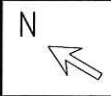


FABRICATION MATERIALS				
PT NO	SPEC	COMPONENT DESCRIPTION	N.S.	QTY
<u>PIPE</u>				
1	STME	PIPE STD WT SMLS STL A106-B	3	28.2'
2	STME	PIPE SCH 80 SMLS STL A106-B	1	0.4'
<u>FITTINGS</u>				
3	STME	HALF COUPLING 3000# SCRD STL A105	3 x 1	1
4	STME	ELL 90 DEG LR STD WT STL A234 WPB BW	3	2
5	STME	ELL 45 DEG STD WT STL A234 WPB BW	3	1
<u>FLANGES</u>				
6	STME	FLG WN 150# RF STL STD BORE A105	3	1
ERECTION MATERIALS				
PT NO	SPEC	COMPONENT DESCRIPTION	N.S.	QTY
<u>FITTINGS</u>				
7	SUPP	SPS-2G GUIDE SUPPORT	3	2
8	SUPP	SPS-2 RESTING SUPPORT	3	1
<u>GASKETS</u>				
9	STME	GASKET 150# 1/8" 316 SPRL WND W/FLEXICARB TYPE CG	3	1
<u>BOLTS</u>				
10	STME	3.9/16 x 5/8" STUD BOLT A193 GR B7 W/2 A194 GR 2H NUTS	11/16	4
<u>VALVES / IN-LINE ITEMS</u>				
11	STME	GATE 800#SCRD F6/STL TRIM OS&Y	1	1

AREA: CETYL	3"-STME-12001	
PIPING GA NO: -	P&ID NO: 1012	STRESS CRITICAL: SA-13
OP. TEMP: 366	OP. PRESS: 150psig	TEST MEDIUM: Service
DES. TEMP: 366	DES. PRESS: 150	TEST PRESS: 165
SCALE: NONE	INSUL. TYPE: NS-CELLULAR	INSUL. THK: 2
LINE NO. / FILE NAME: 3"-STME-12001	ISSUE: R3	

SIZE-A3



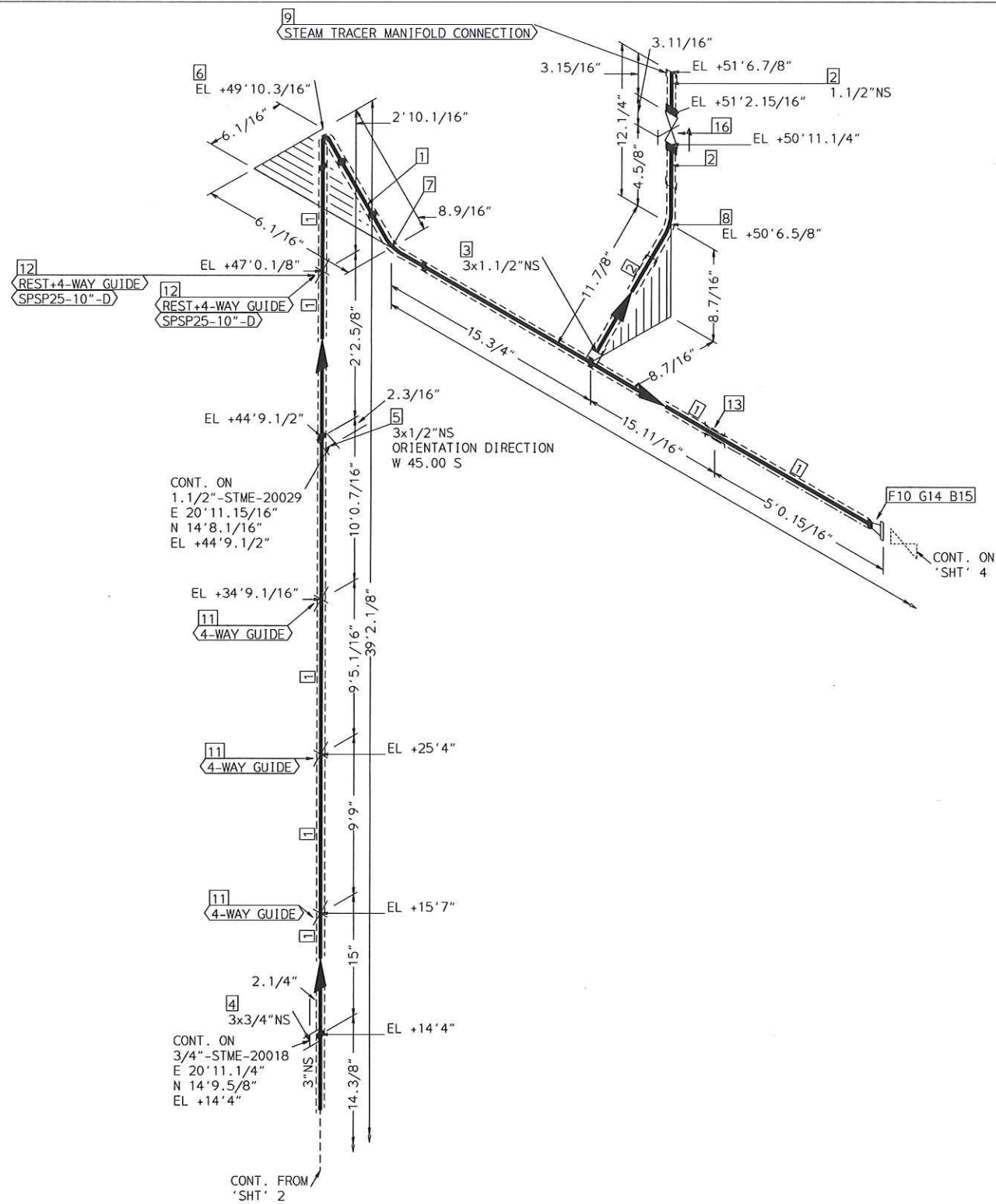
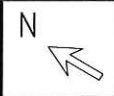
FABRICATION MATERIALS

PT NO	SPEC	COMPONENT DESCRIPTION	N.S.	QTY
PIPE				
1	STME	PIPE STD WT SMLS STL A106-B	3	9.7'
FITTINGS				
2	STME	TEE STD WT STL A234 WPB BW	3 x 3	1
3	STME	HALF COUPLING 3000# SCRD STL A105	3 x 3/4	2
4	STME	HALF COUPLING 3000# SCRD STL A105	3 x 1/2	1
5	STME	CAP STD WT STL A234 WPB BW	3	1
6	STME	ELL 90 DEG LR STD WT STL A234 WPB BW	3	3
7	STME	COUPLING HALF 3000# SCRD STL A105	3/4	1
8	STME	PLUG HEX HEAD SCRD STL A105	3/4	1

ERECTION MATERIALS

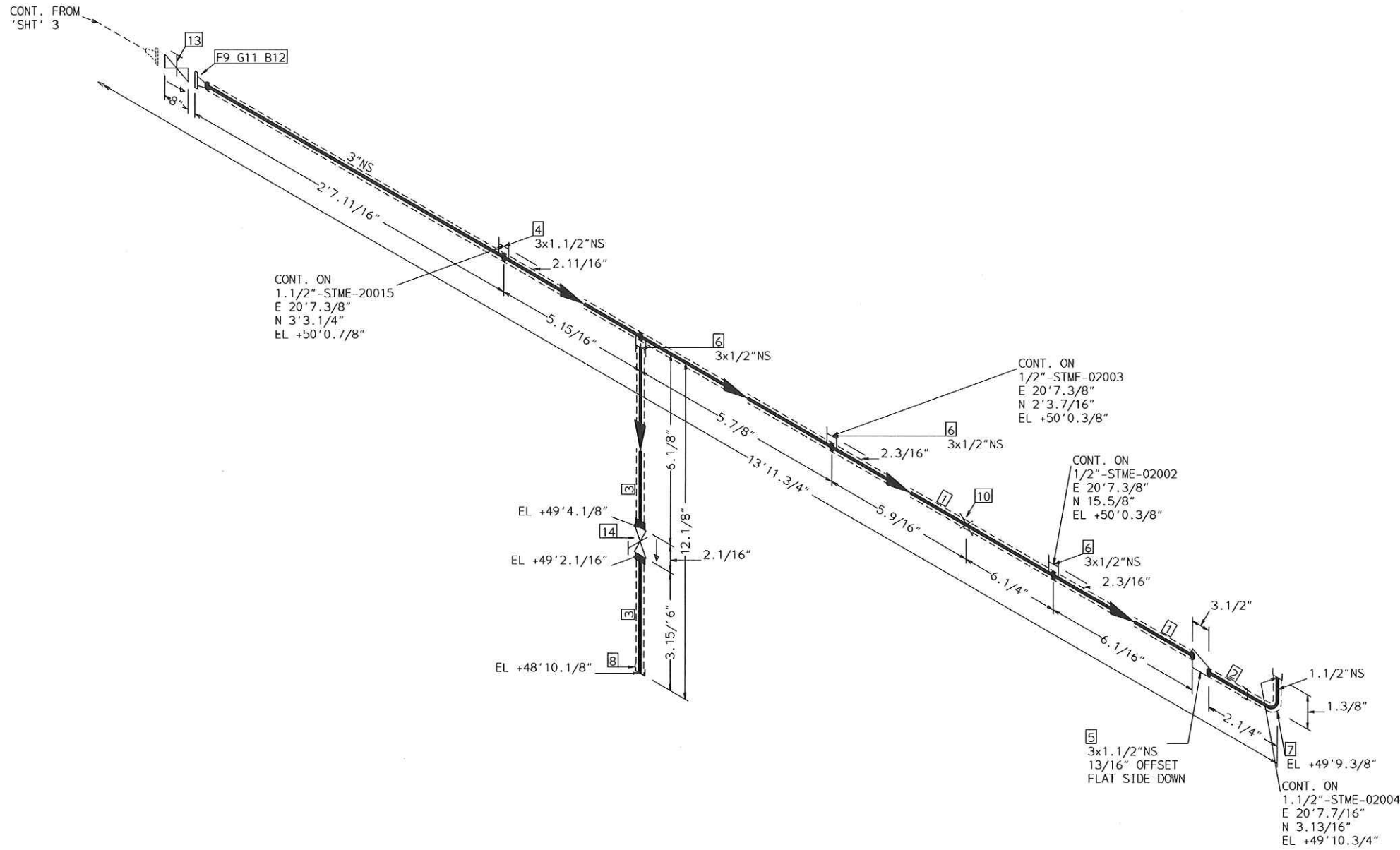
PT NO	SPEC	COMPONENT DESCRIPTION	N.S.	QTY
FITTINGS				
9	SUPP	SPS-2 RESTING SUPPORT	3	1

AREA: CETYL		3" -STME-12001	
PIPING GA NO: -	P&ID NO: 1012	STRESS CRITICAL: SA-13	
OP. TEMP: 366	OP. PRESS: 150psig	TEST MEDIUM: Service	
DES. TEMP: 366	DES. PRESS: 150	TEST PRESS: 165	
SCALE: NONE	INSUL. TYPE: NS-CELLULAR	INSUL. THK: 2	
LINE NO. / FILE NAME: 3" -STME-12001			ISSUE: R3



FABRICATION MATERIALS				
PT NO	SPEC	COMPONENT DESCRIPTION	N.S.	QTY
PIPE				
1	STME	PIPE STD WT SMLS STL A106-B	3	42.7'
2	STME	PIPE SCH 80 SMLS STL A106-B	1.1/2	1.4'
FITTINGS				
3	STME	HALF COUPLING 3000# SCRD STL A105	3 x 1.1/2	1
4	STME	HALF COUPLING 3000# SCRD STL A105	3 x 3/4	1
5	STME	HALF COUPLING 3000# SCRD STL A105	3 x 1/2	1
6	STME	ELL 90 DEG LR STD WT STL A234 WPB BW	3	1
7	STME	ELL 45 DEG STD WT STL A234 WPB BW	3	1
8	STME	ELL 45 DEG 2000# SCRD STL A105	1.1/2	1
9	STME	CAP 3000# SCRD STL A105	1.1/2	1
FLANGES				
10	STME	FLG WN 150# RF STL STD BORE A105	3	1
ERECTION MATERIALS				
PT NO	SPEC	COMPONENT DESCRIPTION	N.S.	QTY
FITTINGS				
11	SUPP	support SPS-68G	3	3
12	SUPP	SPS-25 TRUNNION SUPPORT	3	2
13	SUPP	SPS-2G GUIDE SUPPORT	3	1
GASKETS				
14	STME	GASKET 150# 1/8" 316 SPRL WND W/FLEXICARB TYPE CG	3	1
BOLTS				
15	STME	3.9/16 x5/8" STUD BOLT A193 GR B7 W/2 A194 GR 2H NUTS	11/16	4
VALVES / IN-LINE ITEMS				
16	STME	GATE 800#SCRD F6/STL TRIM OS&Y	1.1/2	1

AREA: CETYL	3"-STME-12001	
PIPING GA NO: -	P&ID NO: 1012	STRESS CRITICAL: SA-13
OP.TEMP: 366	OP.PRESS: 150psig	TEST MEDIUM: Service
DES.TEMP: 366	DES.PRESS: 150	TEST PRESS: 165
SCALE: NONE	INSUL.TYPE: NS-CELLULAR	INSUL.THK: 2
LINE NO. / FILE NAME: 3"-STME-12001	ISSUE: R3	SIZE-A3



FABRICATION MATERIALS

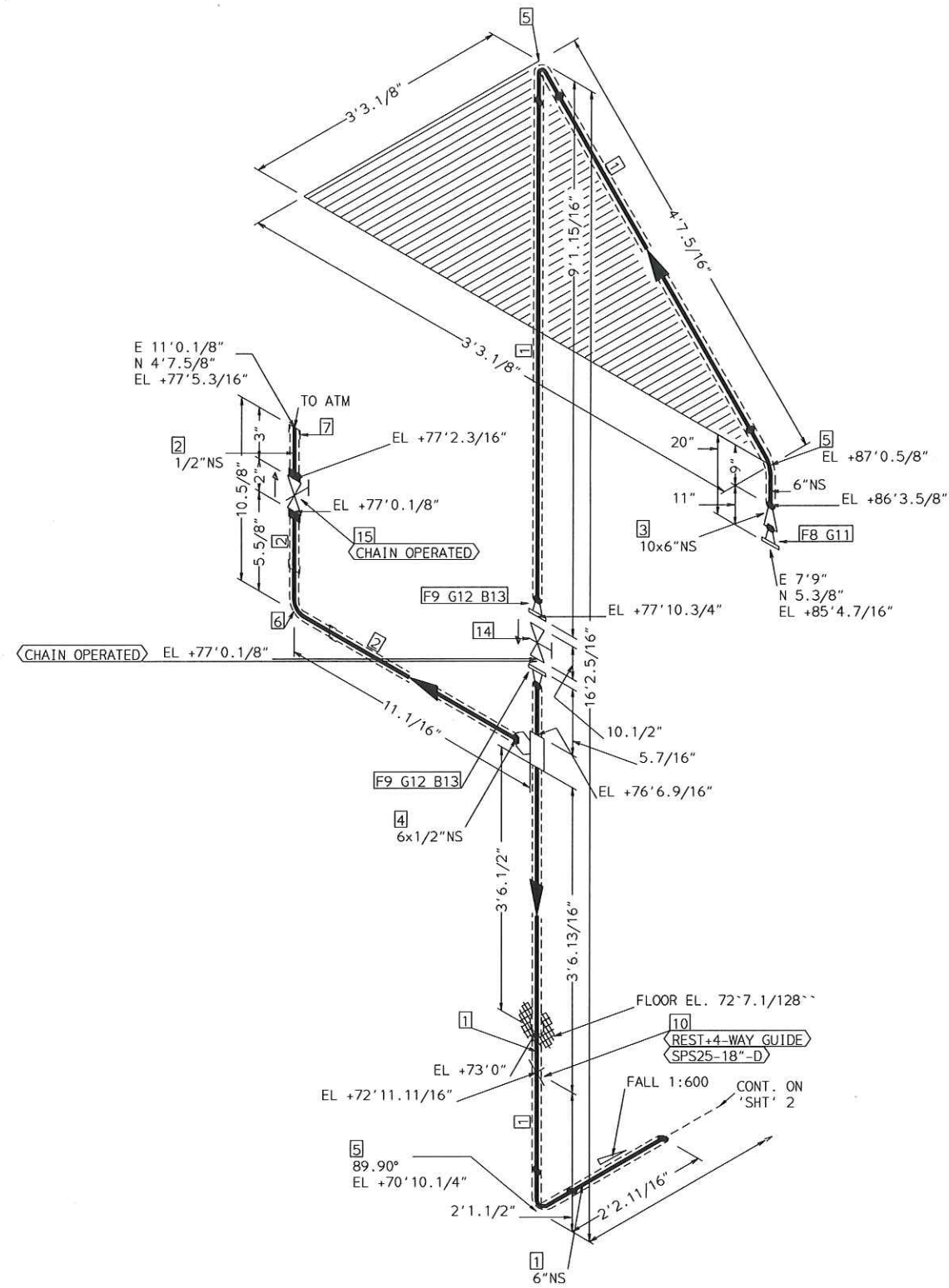
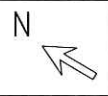
PT NO	SPEC	COMPONENT DESCRIPTION	N.S.	QTY
<u>PIPE</u>				
1	STME	PIPE STD WT SMLS STL A106-B	3	4.9'
2	STME	PIPE SCH 80 SMLS STL A106-B	1.1/2	0.1'
3	STME	PIPE SCH 80 SMLS STL A106-B	1/2	0.7'
<u>FITTINGS</u>				
4	STME	HALF COUPLING 3000# SCRDL STL A105	3 x 1.1/2	1
5	STME	REDUCER ECC STD WT STL A234 WPB BW	3 x 1.1/2	1
6	STME	HALF COUPLING 3000# SCRDL STL A105	3 x 1/2	3
7	STME	ELL 90 DEG 2000# SCRDL STL A105	1.1/2	1
8	STME	CAP 3000# SCRDL STL A105	1/2	1
<u>FLANGES</u>				
9	STME	FLG WN 150# RF STL STD BORE A105	3	1

ERECTION MATERIALS

PT NO	SPEC	COMPONENT DESCRIPTION	N.S.	QTY
<u>FITTINGS</u>				
10	SUPP	SPS-2 RESTING SUPPORT	3	1
<u>GASKETS</u>				
11	STME	GASKET 150# 1/8" 316 SPRL WND W/FLEXICARB TYPE CG	3	1
<u>BOLTS</u>				
12	STME	3.9/16 x 5/8" STUD BOLT A193 GR B7 W/2 A194 GR 2H NUTS	11/16	4
<u>VALVES / IN-LINE ITEMS</u>				
13	STME	GATE 150# RF FORGED STEEL F6 TRIM	3	1
14	STME	GATE 800#SCRDL F6/STL TRIM OS&Y	1/2	1

AREA: CETYL	3"-STME-12001	
PIPING GA NO: -	P&ID NO: 1012	STRESS CRITICAL: SA-13
OP. TEMP: 366	OP. PRESS: 150psig	TEST MEDIUM: Service
DES. TEMP: 366	DES. PRESS: 150	TEST PRESS: 165
SCALE: NONE	INSUL. TYPE: NS-CELLULAR	INSUL. THK: 2
LINE NO. / FILE NAME: 3"-STME-12001	ISSUE: R3	

SIZE-A3



FABRICATION MATERIALS

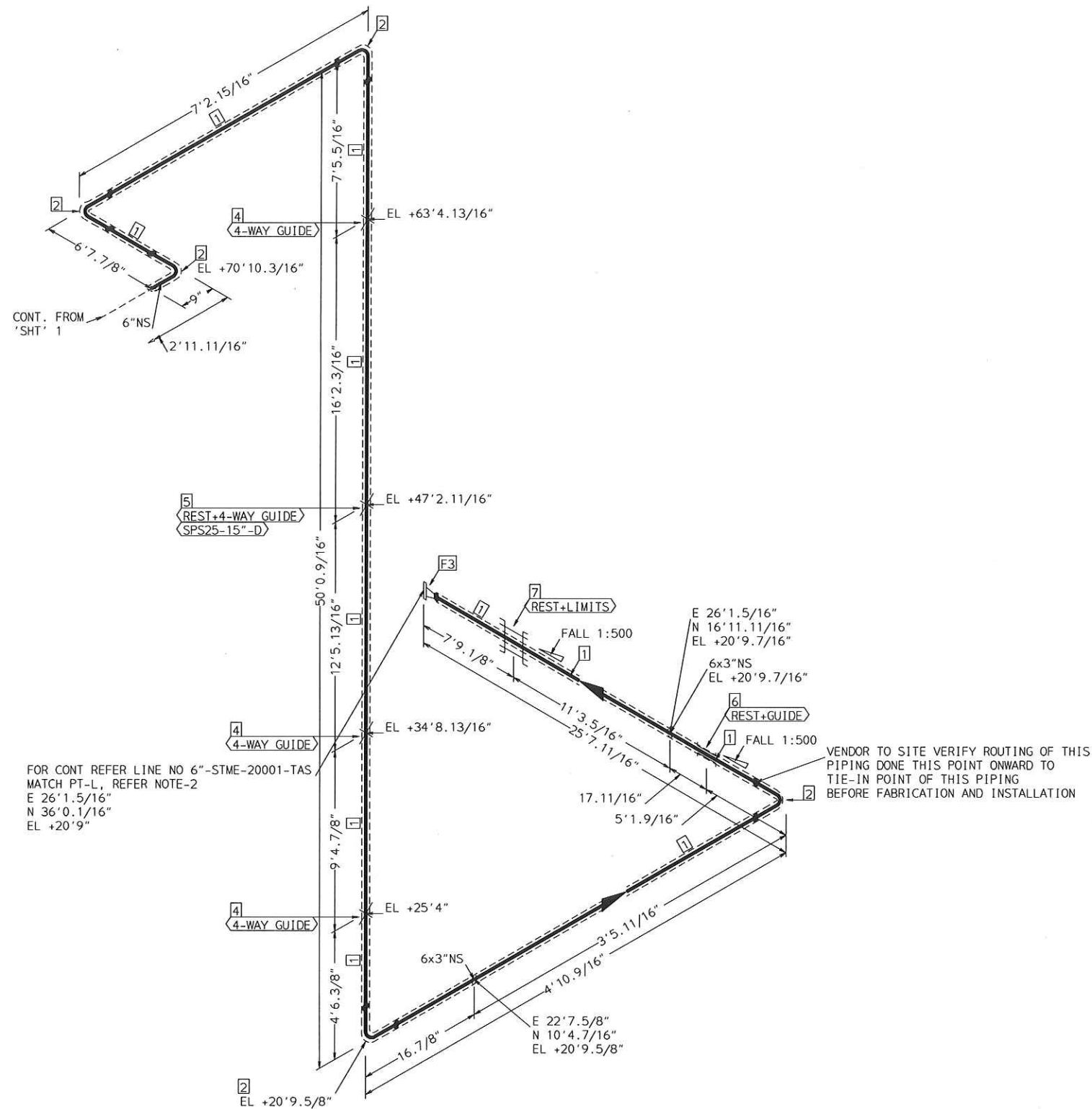
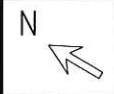
PT NO	SPEC	COMPONENT DESCRIPTION	N.S.	QTY
PIPE				
1	STME	PIPE STD WT SMLS STL A106-B	6	17.9'
2	STME	PIPE SCH 80 SMLS STL A106-B	1/2	1.3'
FITTINGS				
3	STME	REDUCER CONC STD WT STL A234 WPB BW	10 x 6	1
4	STME	WELDOLET STD WT STL A105	6 x 1/2	1
5	STME	ELL 90 DEG LR STD WT STL A234 WPB BW	6	3
6	STME	ELL 90 DEG 2000# SCRDL STL A105	1/2	1
7	STME	CAP 3000# SCRDL STL A105	1/2	1
FLANGES				
8	STME	FLG WN 150# RF STL STD BORE A105	10	1
9	STME	FLG WN 150# RF STL STD BORE A105	6	2

ERECTION MATERIALS

PT NO	SPEC	COMPONENT DESCRIPTION	N.S.	QTY
FITTINGS				
10	SUPP	SPS-25 TRUNNION SUPPORT	6	1
GASKETS				
11	STME	GASKET 150# 1/8" 316 SPRL WND W/FLEXICARB TYPE CG	10	1
12	STME	GASKET 150# 1/8" 316 SPRL WND W/FLEXICARB TYPE CG	6	2
BOLTS				
13	STME	3.15/16 x3/4" STUD BOLT A193 GR B7 W/2 A194 GR 2H NUTS	7/8	16
VALVES / IN-LINE ITEMS				
14	STME	GATE 150# RF FORGED STEEL F6 TRIM	6	1
15	STME	GATE 800#SCRDL F6/STL TRIM OS&Y	1/2	1

AREA: CETYL	6"-STME-20001	
PIPING GA NO: -	P&ID NO: 1020	STRESS CRITICAL: SA-05
OP.TEMP: 275	OP.PRESS: 30psig	TEST MEDIUM: Service
DES.TEMP: 366	DES.PRESS: 150	TEST PRESS: 165
SCALE: NONE	INSUL.TYPE: NS-CELLULAR	INSUL.THK: 2
LINE NO. / FILE NAME: 6"-STME-20001	ISSUE: R3	

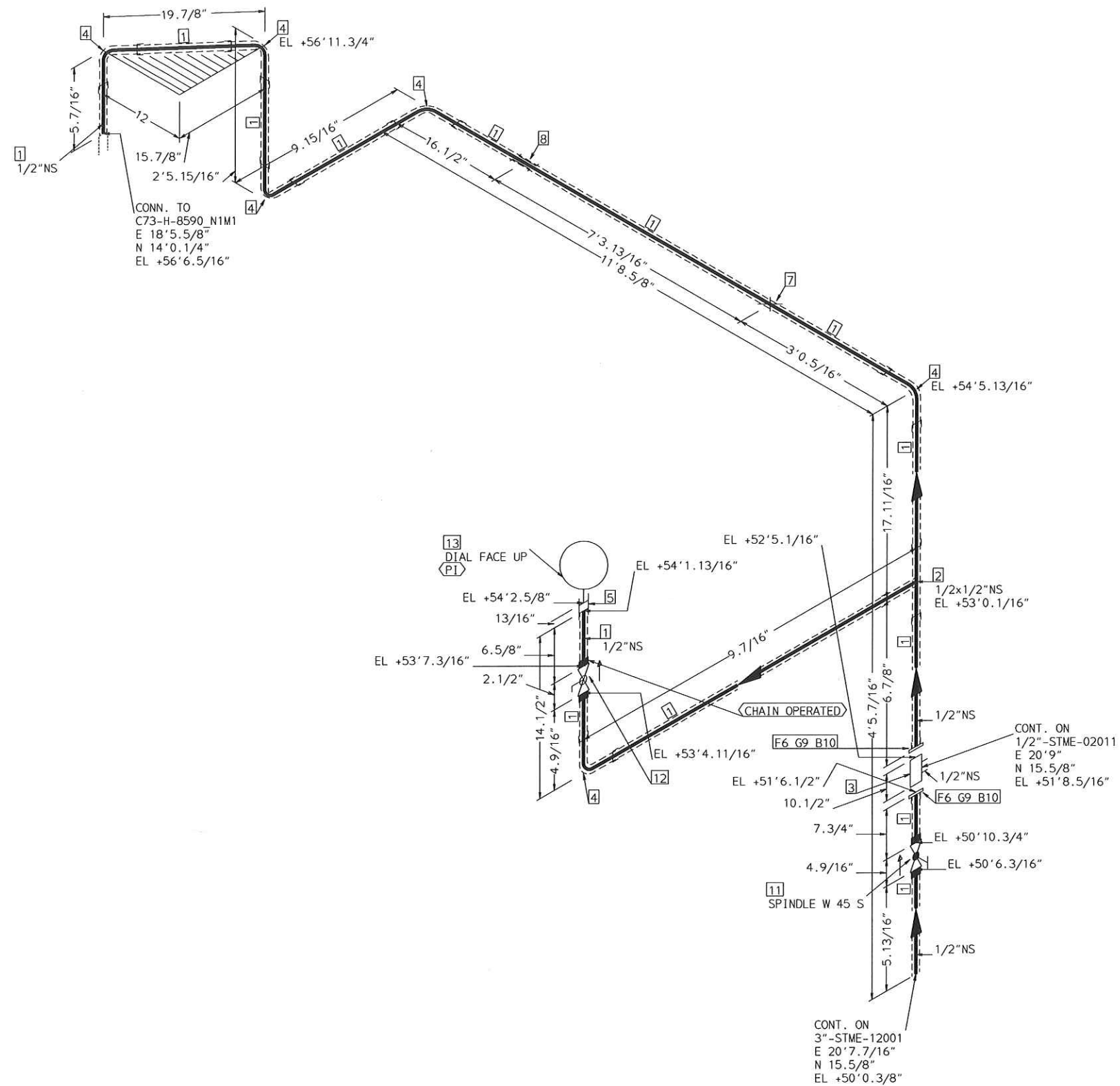
SIZE-A3



FABRICATION MATERIALS				
PT NO	SPEC	COMPONENT DESCRIPTION	N.S.	QTY
1	STME	PIPE	6	87.5'
		PIPE STD WT SMLS STL A106-B		
2	STME	FITTINGS	6	5
		ELL 90 DEG LR STD WT STL A234 WPB BW		
3	STME	FLANGES	6	1
		FLG WN 150# RF STL STD BORE A105		
ERECTION MATERIALS				
PT NO	SPEC	COMPONENT DESCRIPTION	N.S.	QTY
4	SUPP	FITTINGS	6	3
		SPS-67G support		
		SPS-25 TRUNNION SUPPORT		
		SPS-2G GUIDE SUPPORT		
5	SUPP	SPS-25 TRUNNION SUPPORT	6	1
6	SUPP	SPS-2G GUIDE SUPPORT	6	1
7	SUPP	SPS-37 TWO DIRECTIONAL RESTRAINT SUPPORT	6	1

AREA: CETYL		6"-STME-20001	
PIPING GA NO: -	P&ID NO: 1020	STRESS CRITICAL: SA-05	
OP. TEMP: 275	OP. PRESS: 30psig	TEST MEDIUM: Service	
DES. TEMP: 366	DES. PRESS: 150	TEST PRESS: 165	
SCALE: NONE	INSUL. TYPE: NS-CELLULAR	INSUL. THK: 2	
LINE NO. / FILE NAME: 6"-STME-20001			ISSUE: R3

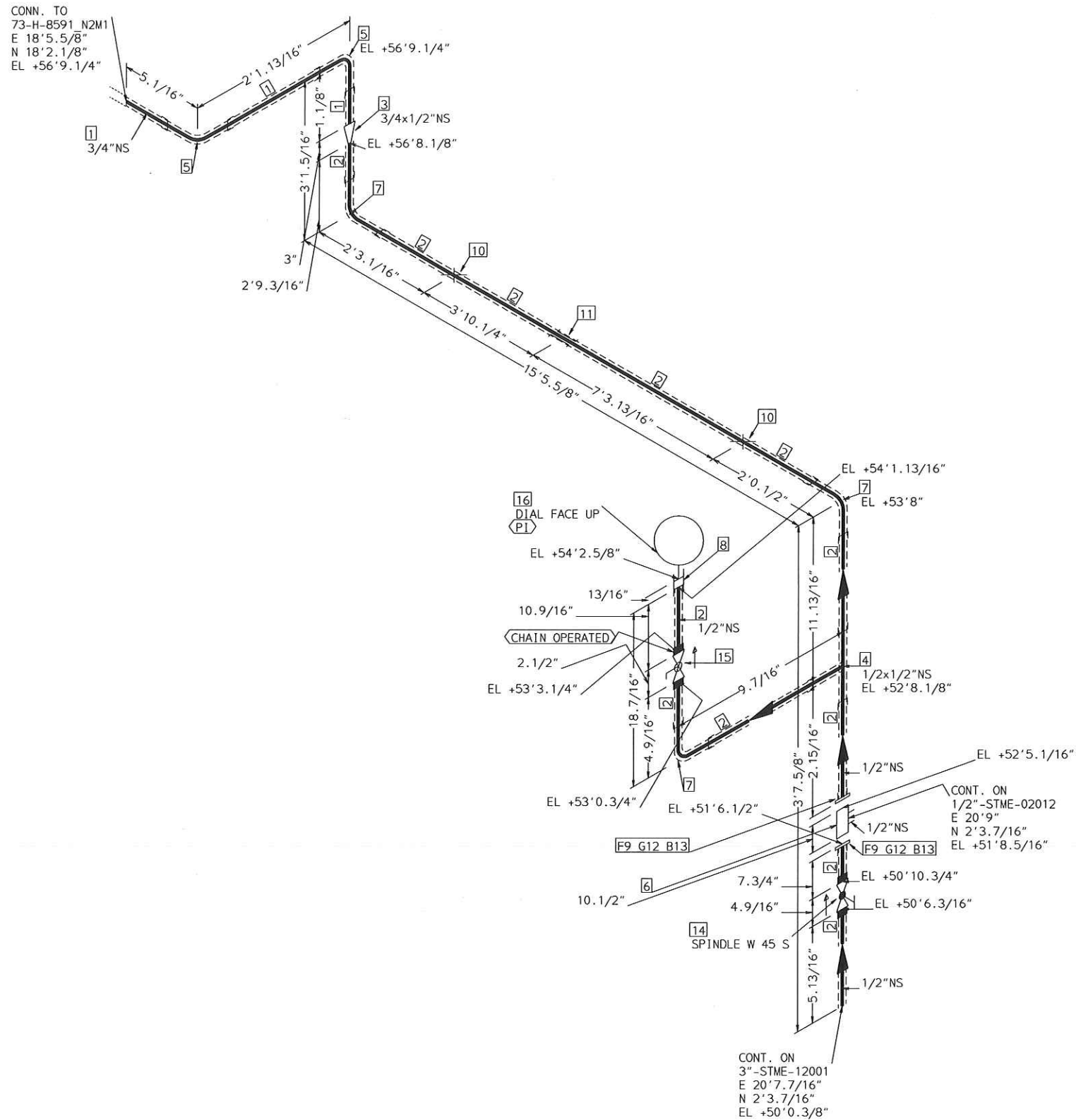
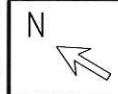
SIZE-A3



FABRICATION MATERIALS				
PT NO	SPEC	COMPONENT DESCRIPTION	N.S.	QTY
1	STME	PIPE	1/2	21.4'
		PIPE SCH 80 SMLS STL A106-B		
2	STME	FITTINGS	1/2 x	1
		TEE 2000# SCRDL STL A105		
3	STME	LCF SEPARATOR 150# RF	1/2	1
4	STME	ELL 90 DEG 2000# SCRDL STL A105	1/2	6
5	STME	COUPLING FULL 3000# SCRDL STL A105	1/2	1
6	STME	FLANGES	1/2	2
		FLG SCRDL 150# RF STL A105		
ERECTION MATERIALS				
PT NO	SPEC	COMPONENT DESCRIPTION	N.S.	QTY
7	SUPP	FITTINGS	1/2	1
		SPS-2 RESTING SUPPORT		
8	SUPP	SPS-2G GUIDE SUPPORT	1/2	1
9	STME	GASKETS	1/2	2
		GASKET 150# 1/8" 316 SPRL WND W/FLEXICARB TYPE CG		
10	STME	BOLTS	9/16	8
		2.3/8 x 1/2" STUD BOLT A193 GR B7 W/2 A194 GR 2H NUTS		
11	STME	VALVES / IN-LINE ITEMS	1/2	1
		GLOBE 800# SCRDL A-105 C. STL STD PRT F6 TRIM		
12	STME	BALL 1500# SCRDL CS FULL PORT 3 PIECE	1/2	1
13	STME	INSTRUMENTS	1/2	1
		PRESSURE INDICATOR		

AREA: CETYL	1/2"-STME-02002	
PIPING GA NO: -	P&ID NO: 1002	STRESS CRITICAL: NA
OP. TEMP: 366°F	OP. PRESS: 150 psig	TEST MEDIUM: Service
DES. TEMP: 366°F	DES. PRESS: 150 psig	TEST PRESS: 225 psig
SCALE: NONE	INSUL. TYPE: NS-CELLULAR	INSUL. THK: 1.5 inch
LINE NO. / FILE NAME: 1/2"-STME-02002	ISSUE: R3	

SIZE-A3

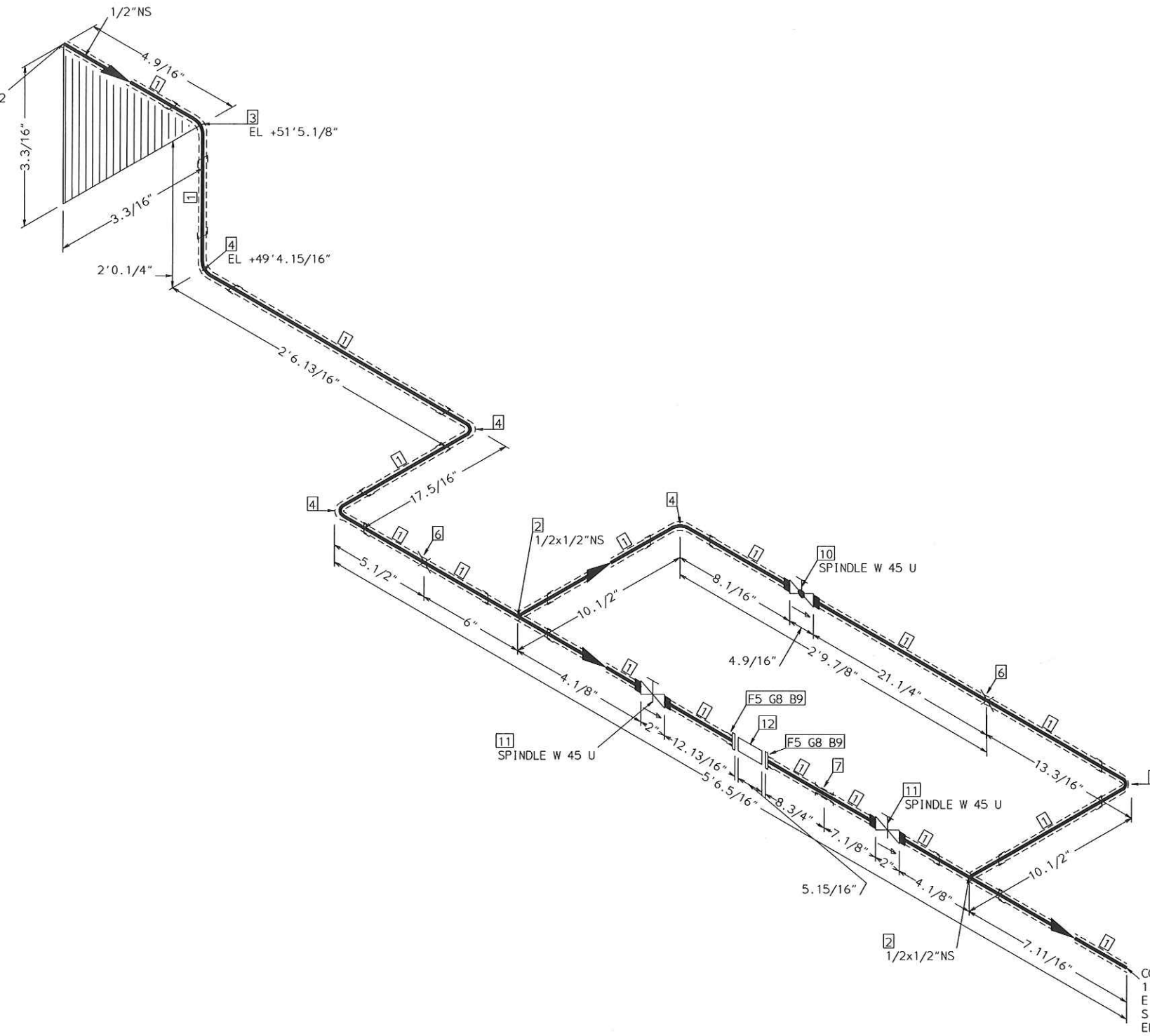


FABRICATION MATERIALS				
PT NO	SPEC	COMPONENT DESCRIPTION	N.S.	QTY
PIPE				
1	STME	PIPE SCH 80 SMLS STL A106-B	3/4	2.5'
2	STME	PIPE SCH 80 SMLS STL A106-B	1/2	22.2'
FITTINGS				
3	STME	SWAGE CONC XS STL A234 GR WPB TBE	3/4 x 1/2	1
4	STME	TEE 2000# SCRDL STL A105	1/2 x 1/2	1
5	STME	ELL 90 DEG 2000# SCRDL STL A105	3/4	2
6	STME	LCF SEPARATOR 150# RF	1/2	1
7	STME	ELL 90 DEG 2000# SCRDL STL A105	1/2	3
8	STME	COUPLING FULL 3000# SCRDL STL A105	1/2	1
FLANGES				
9	STME	FLG SCRDL 150# RF STL A105	1/2	2
ERECTION MATERIALS				
PT NO	SPEC	COMPONENT DESCRIPTION	N.S.	QTY
FITTINGS				
10	SUPP	SPS-2 RESTING SUPPORT	1/2	2
11	SUPP	SPS-2G GUIDE SUPPORT	1/2	1
GASKETS				
12	STME	GASKET 150# 1/8" 316 SPRL WND W/FLEXICARB TYPE CG	1/2	2
BOLTS				
13	STME	2.3/8 x 1/2" STUD BOLT A193 GR B7 W/2 A194 GR 2H NUTS	9/16	8
VALVES / IN-LINE ITEMS				
14	STME	GLOBE 800# SCRDL A-105 C. STL STD PRT F6 TRIM	1/2	1
15	STME	BALL 1500# SCRDL CS FULL PORT 3 PIECE	1/2	1
INSTRUMENTS				
16	STME	PRESSURE INDICATOR	1/2	1

AREA: CETYL	1/2" - STME - 02003	
PIPING GA NO: -	P&ID NO: 1002	STRESS CRITICAL: NA
OP. TEMP: 366°F	OP. PRESS: 150 psig	TEST MEDIUM: Service
DES. TEMP: 366°F	DES. PRESS: 150 psig	TEST PRESS: 225 psig
SCALE: NONE	INSUL. TYPE: NS-CELLULAR	INSUL. THK: 1.5 inch
LINE NO. / FILE NAME: 1/2" - STME - 02003	ISSUE: R3	



CONT. ON
1/2"-STME-02002
E 20'9"
N 15.5/8"
EL +51'8.5/16"

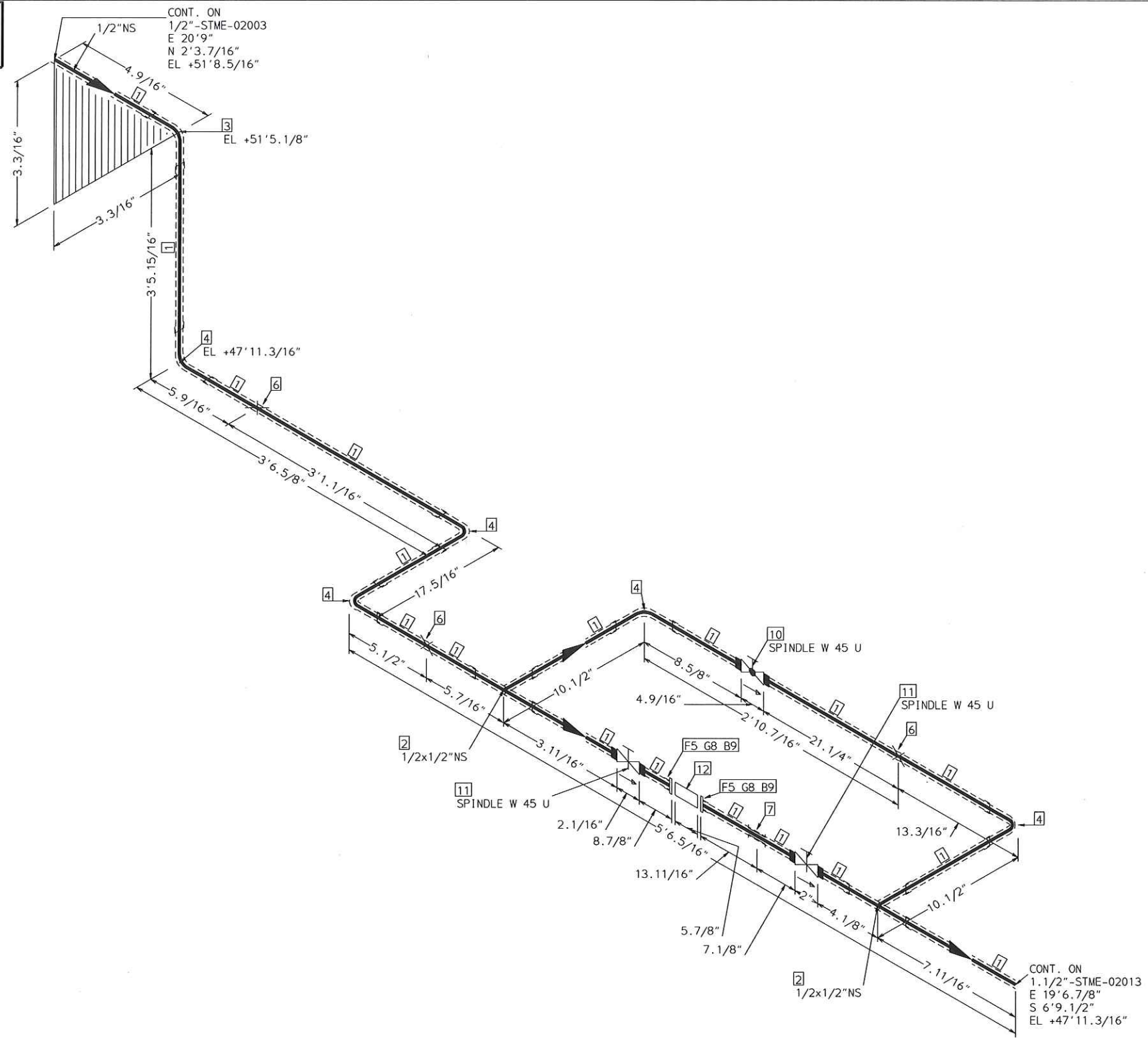


CONT. ON
1.1/2"-STME-02013
E 19'6.7/8"
S 6'9.1/2"
EL +49'4.15/16"

FABRICATION MATERIALS				
PT NO	SPEC	COMPONENT DESCRIPTION	N.S.	QTY
1	STME	PIPE		
		PIPE SCH 80 SMLS STL A106-B	1/2	15.6'
2	STME	FITTINGS		
		TEE 2000# SCRDL STL A105	1/2 x	2
		ELL 45 DEG 2000# SCRDL STL A105	1/2	1
		ELL 90 DEG 2000# SCRDL STL A105	1/2	5
5	STME	FLANGES		
		FLG SCRDL 150# RF STL A105	1/2	2
ERECTION MATERIALS				
PT NO	SPEC	COMPONENT DESCRIPTION	N.S.	QTY
6	SUPP	FITTINGS		
		SPS-2 RESTING SUPPORT	1/2	2
7	SUPP	SPS-2G GUIDE SUPPORT	1/2	1
8	STME	GASKETS		
		GASKET 150# 1/8" 316 SPRL WND W/FLEXICARB TYPE CG	1/2	2
9	STME	BOLTS		
		2.3/8 x 1/2" STUD BOLT A193 GR B7 W/2 A194 GR 2H NUTS	9/16	8
10	STME	VALVES / IN-LINE ITEMS		
		GLOBE 800# SCRDL A-105 C. STL STD PRT F6 TRIM	1/2	1
11	STME	GATE 800#SCRDL F6/STL TRIM OS&Y	1/2	2
12	STME	BALL FLOAT TYPE STEAM TRAP 150#RF	1/2	1

AREA: CETYL	1/2"-STME-02011	
PIPING GA NO: -	P&ID NO: 1002	STRESS CRITICAL: NA
OP.TEMP: 366°F	OP.PRESS: 150psig	TEST MEDIUM: Service
DES.TEMP: 366°F	DES.PRESS: 150psig	TEST PRESS: 225psig
SCALE: NONE	INSUL.TYPE: NS-CELLULAR	INSUL.THK: 1
LINE NO. / FILE NAME: 1/2"-STME-02011	ISSUE: R3	

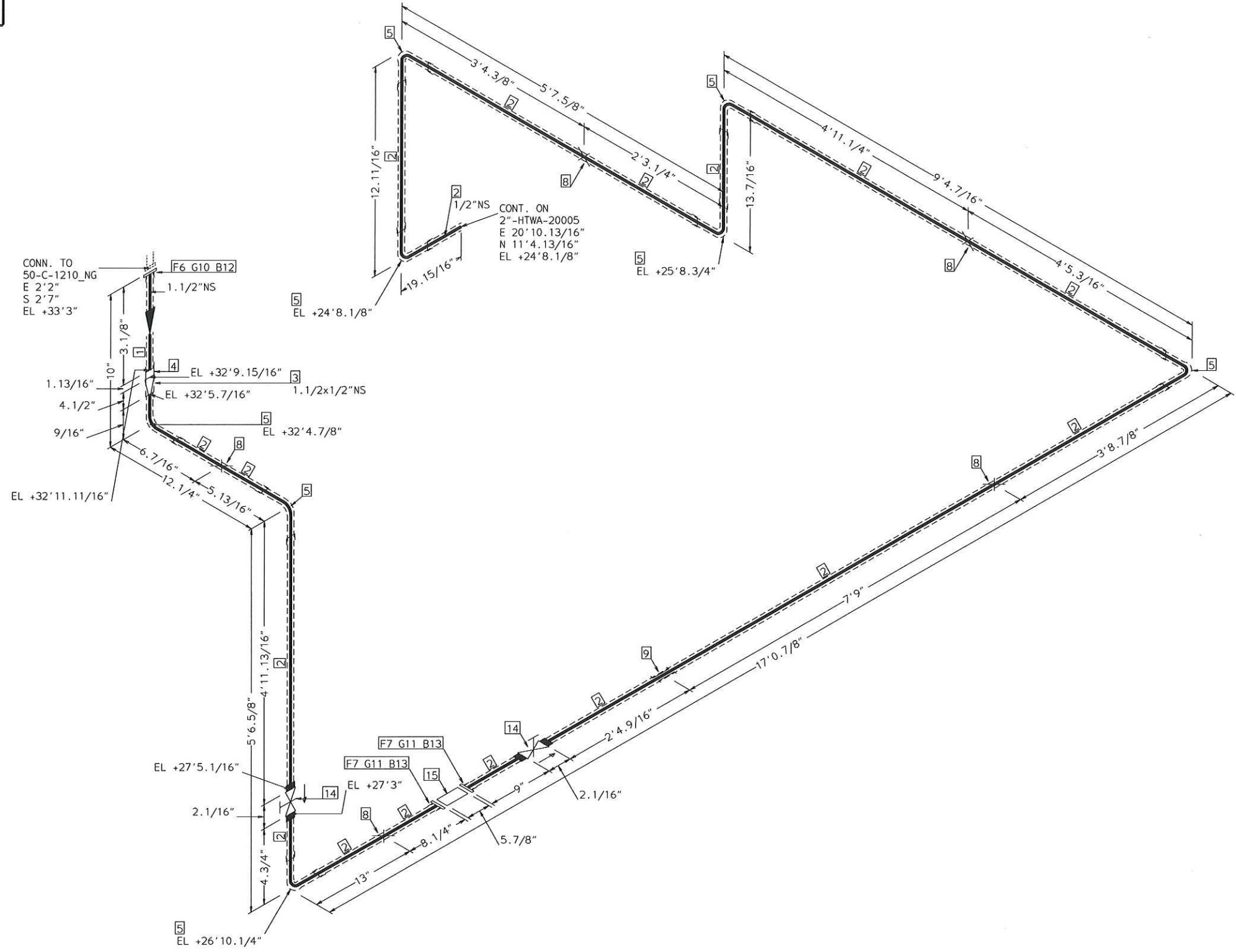
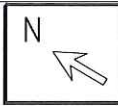
SIZE-A3



FABRICATION MATERIALS				
PT NO	SPEC	COMPONENT DESCRIPTION	N.S.	QTY
1	STME	PIPE		
		PIPE SCH 80 SMLS STL A106-B	1/2	18.1'
2	STME	FITTINGS		
		TEE 2000# SCRDL STL A105	1/2 x	2
		ELL 45 DEG 2000# SCRDL STL A105	1/2	1
		ELL 90 DEG 2000# SCRDL STL A105	1/2	5
5	STME	FLANGES		
		FLG SCRDL 150# RF STL A105	1/2	2
ERECTION MATERIALS				
PT NO	SPEC	COMPONENT DESCRIPTION	N.S.	QTY
6	SUPP	FITTINGS		
		SPS-2 RESTING SUPPORT	1/2	3
7	SUPP	SPS-2G GUIDE SUPPORT	1/2	1
8	STME	GASKETS		
		GASKET 150# 1/8" 316 SPRL WND W/FLEXICARB TYPE CG	1/2	2
9	STME	BOLTS		
		2.3/8 x 1/2" STUD BOLT A193 GR B7 W/2 A194 GR 2H NUTS	9/16	8
10	STME	VALVES / IN-LINE ITEMS		
		GLOBE 800# SCRDL A-105 C. STL STD PRT F6 TRIM	1/2	1
11	STME	GATE 800#SCRDL F6/STL TRIM OS&Y	1/2	2
12	STME	BALL FLOAT TYPE STEAM TRAP 150#RF	1/2	1

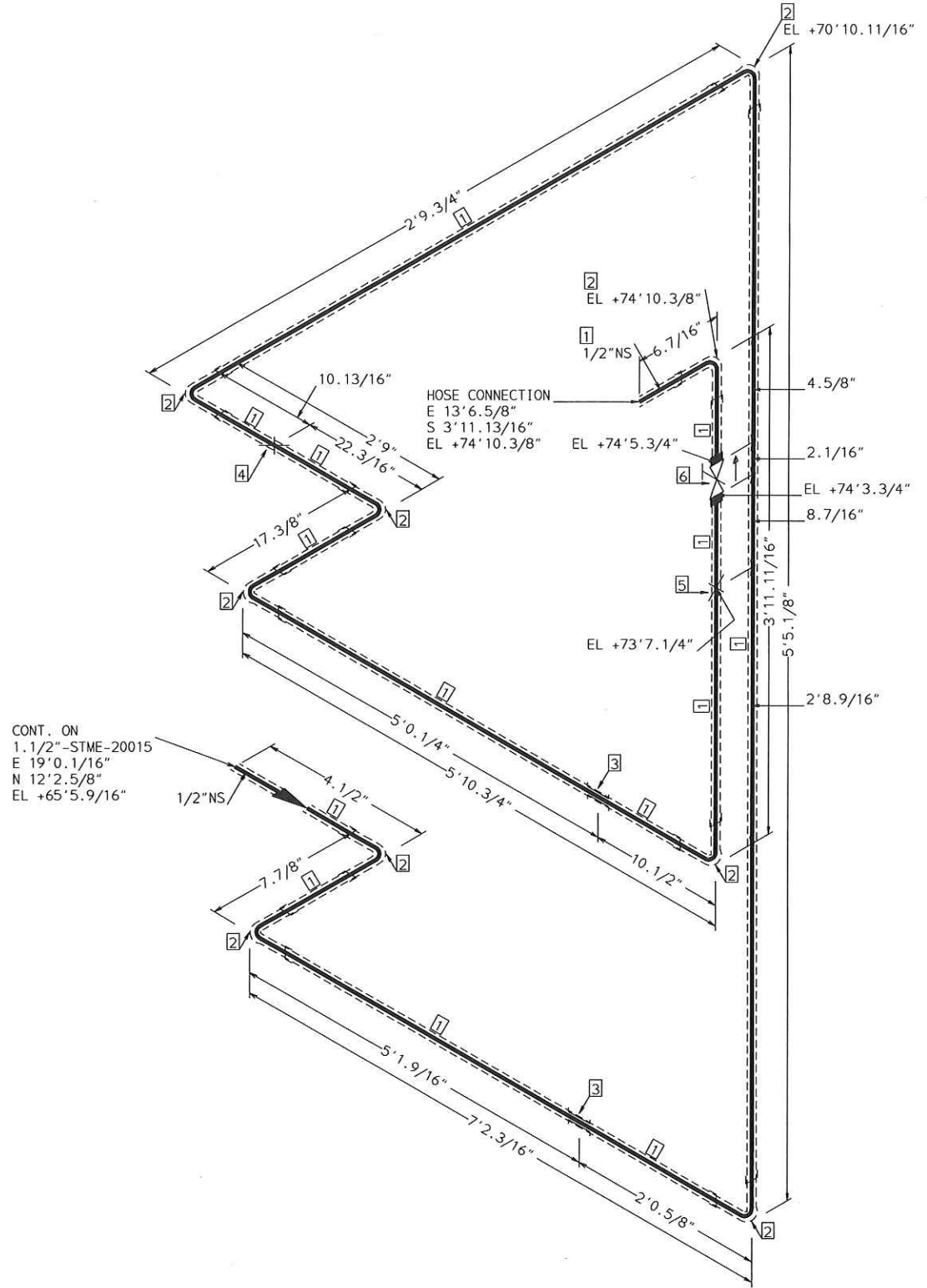
AREA: CETYL	1/2"-STME-02012	
PIPING GA NO: -	P&ID NO: 1002	STRESS CRITICAL: NA
OP.TEMP: 366°F	OP.PRESS: 150psig	TEST MEDIUM: Service
DES.TEMP: 366°F	DES.PRESS: 150psig	TEST PRESS: 225psig
SCALE: NONE	INSUL.TYPE: NS-CELLULAR	INSUL.THK: 1
LINE NO. / FILE NAME: 1/2"-STME-02012	ISSUE: R3	

SIZE-A3



FABRICATION MATERIALS				
PT NO	SPEC	COMPONENT DESCRIPTION	N.S.	QTY
PIPE				
1	STME	PIPE SCH 80 SMLS STL A106-B	1.1/2	0.3'
2	STME	PIPE SCH 80 SMLS STL A106-B	1/2	40.9'
FITTINGS				
3	STME	SWAGE CONC XS STL A234 GR WPB TBE	1.1/2	1
4	STME	COUPLING FULL 3000# SCRDL STL A105	1.1/2	1
5	STME	ELL 90 DEG 2000# SCRDL STL A105	1/2	8
FLANGES				
6	STME	FLG SCRDL 150# RF STL A105	1.1/2	1
7	STME	FLG SCRDL 150# RF STL A105	1/2	2
ERECTION MATERIALS				
PT NO	SPEC	COMPONENT DESCRIPTION	N.S.	QTY
FITTINGS				
8	SUPP	SPS-2 RESTING SUPPORT	1/2	5
9	SUPP	SPS-2G GUIDE SUPPORT	1/2	1
GASKETS				
10	STME	GASKET 150# 1/8" 316 SPRL WND W/FLEXICARB TYPE CG	1.1/2	1
11	STME	GASKET 150# 1/8" 316 SPRL WND W/FLEXICARB TYPE CG	1/2	2
BOLTS				
12	STME	2.3/4 x1/2" STUD BOLT A193 GR B7 W/2 A194 GR 2H NUTS	9/16	4
13	STME	2.3/8 x1/2" STUD BOLT A193 GR B7 W/2 A194 GR 2H NUTS	9/16	8
VALVES / IN-LINE ITEMS				
14	STME	GATE 800#SCRDL F6/STL TRIM OS&Y	1/2	2
15	STME	BALL FLOAT TYPE STEAM TRAP 150#RF	1/2	1

AREA: CETYL		1/2"-STME-20040	
PIPING GA NO: -	P&ID NO: 1020	STRESS CRITICAL: NA	
OP.TEMP: 366°F	OP.PRESS: 150 psig	TEST MEDIUM: Service	
DES.TEMP: 366°F	DES.PRESS: 150 psig	TEST PRESS: 225 psig	
SCALE: NONE	INSUL.TYPE: NS-CELLULAR	INSUL.THK: 1 inch	
LINE NO. / FILE NAME: 1/2"-STME-20040			ISSUE: R3

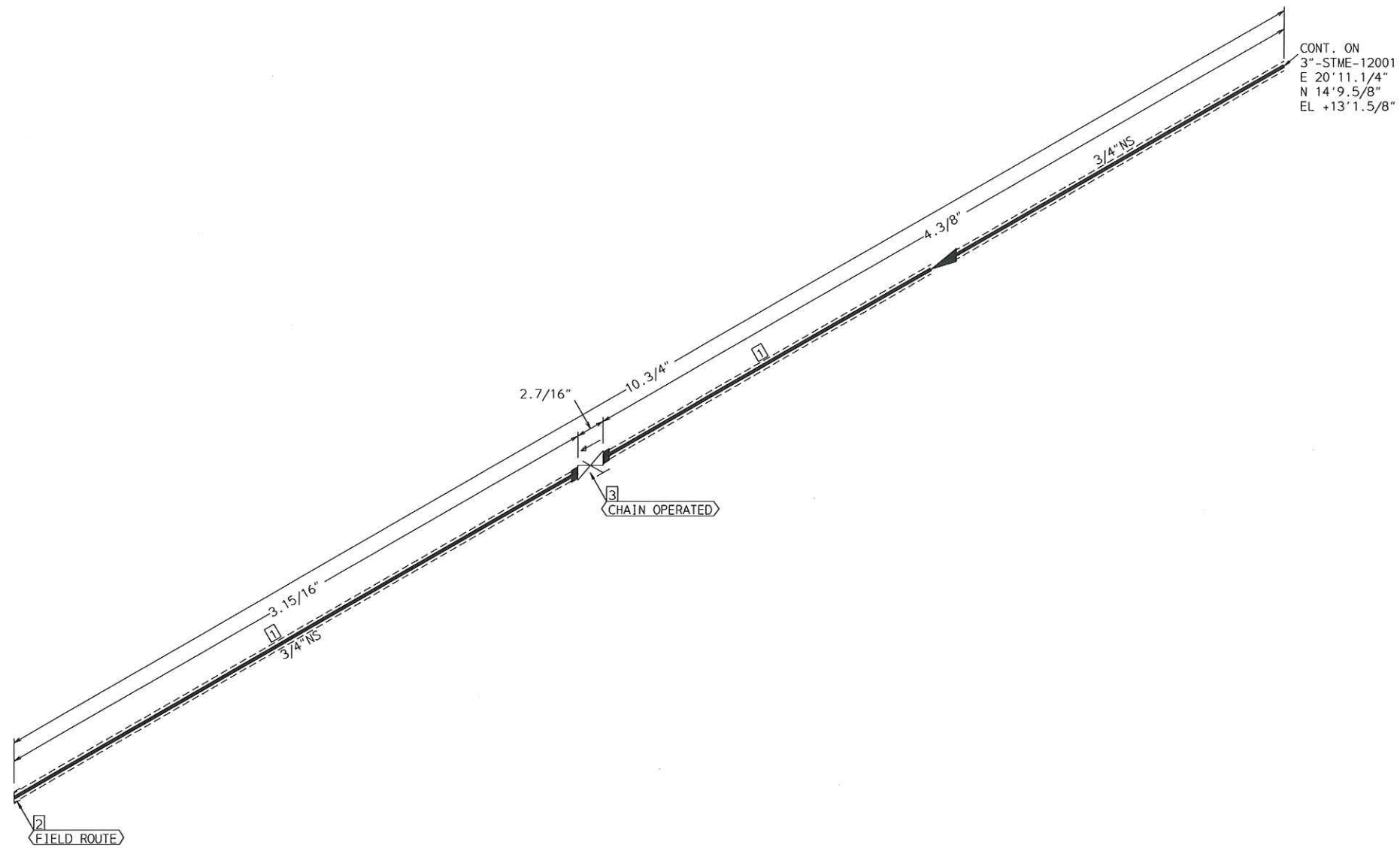


CONT. ON
 1. 1/2" - STME-20015
 E 19'0.1/16"
 N 12'2.5/8"
 EL +65'5.9/16"

FABRICATION MATERIALS				
PT NO	SPEC	COMPONENT DESCRIPTION	N.S.	QTY
1	STME	PIPE	1/2	30.1'
		PIPE SCH 80 SMLS STL A106-B		
2	STME	FITTINGS	1/2	9
		ELL 90 DEG 2000# SCRCD STL A105		
ERECTION MATERIALS				
PT NO	SPEC	COMPONENT DESCRIPTION	N.S.	QTY
3	SUPP	FITTINGS	1/2	2
		SPS-2G GUIDE SUPPORT		
		SPS-2 RESTING SUPPORT		
4	SUPP	SPS-67G support	1/2	1
5	SUPP		1/2	1
6	STME	VALVES / IN-LINE ITEMS	1/2	1
		GATE 800#SCRCD F6/STL TRIM OS&Y		

AREA: CETYL		1/2" - STME-20047		
PIPING GA NO: -	P&ID NO: 1020	STRESS CRITICAL: NA		
OP. TEMP: 366°F	OP. PRESS: 150psig	TEST MEDIUM: Service		
DES. TEMP: 366°F	DES. PRESS: 150psig	TEST PRESS: 225psig		
SCALE: NONE	INSUL. TYPE: NS-CELLULAR	INSUL. THK: 2		
LINE NO. / FILE NAME: 1/2" - STME-20047				ISSUE: R3

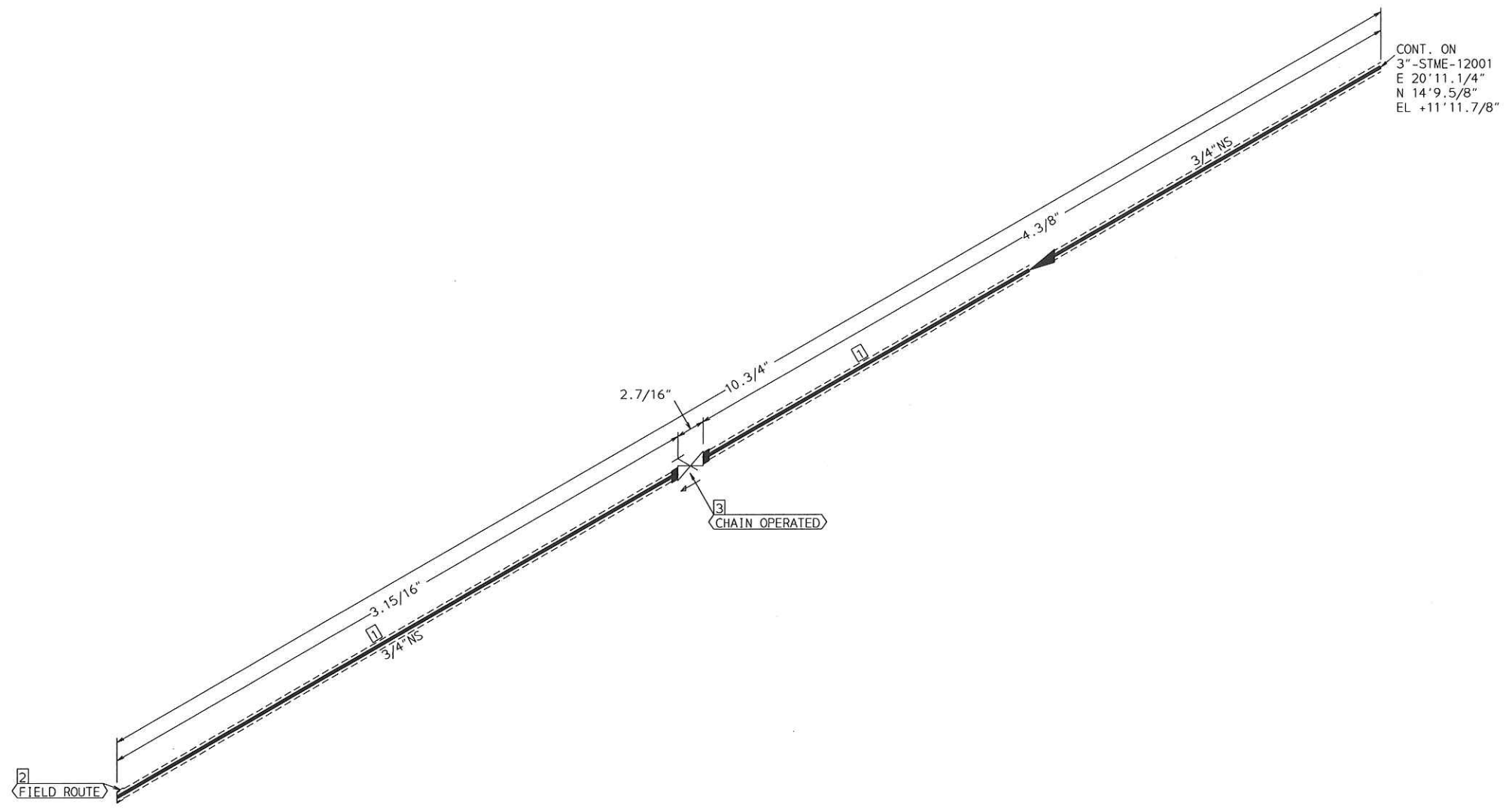
SIZE-A3



FABRICATION MATERIALS				
PT NO	SPEC	COMPONENT DESCRIPTION	N.S.	QTY
1	STME	PIPE	3/4	0.7'
		PIPE SCH 80 SMLS STL A106-B		
2	STME	FITTINGS	3/4	1
		CAP 3000# SCRD STL A105		

ERECTION MATERIALS				
PT NO	SPEC	COMPONENT DESCRIPTION	N.S.	QTY
3	STME	VALVES / IN-LINE ITEMS	3/4	1
		GATE 800#SCRD F6/STL TRIM OS&Y		

AREA: CETYL		3/4" -STME-12005		
PIPING GA NO: -	P&ID NO: 1012	STRESS CRITICAL: NA		
OP. TEMP: 366°F	OP. PRESS: 150psig	TEST MEDIUM: Service		
DES. TEMP: 366°F	DES. PRESS: 150psig	TEST PRESS: 225psig		
SCALE: NONE	INSUL. TYPE: N5-CELLULAR	INSUL. THK: 2		
LINE NO. / FILE NAME: 3/4" -STME-12005				ISSUE: R3

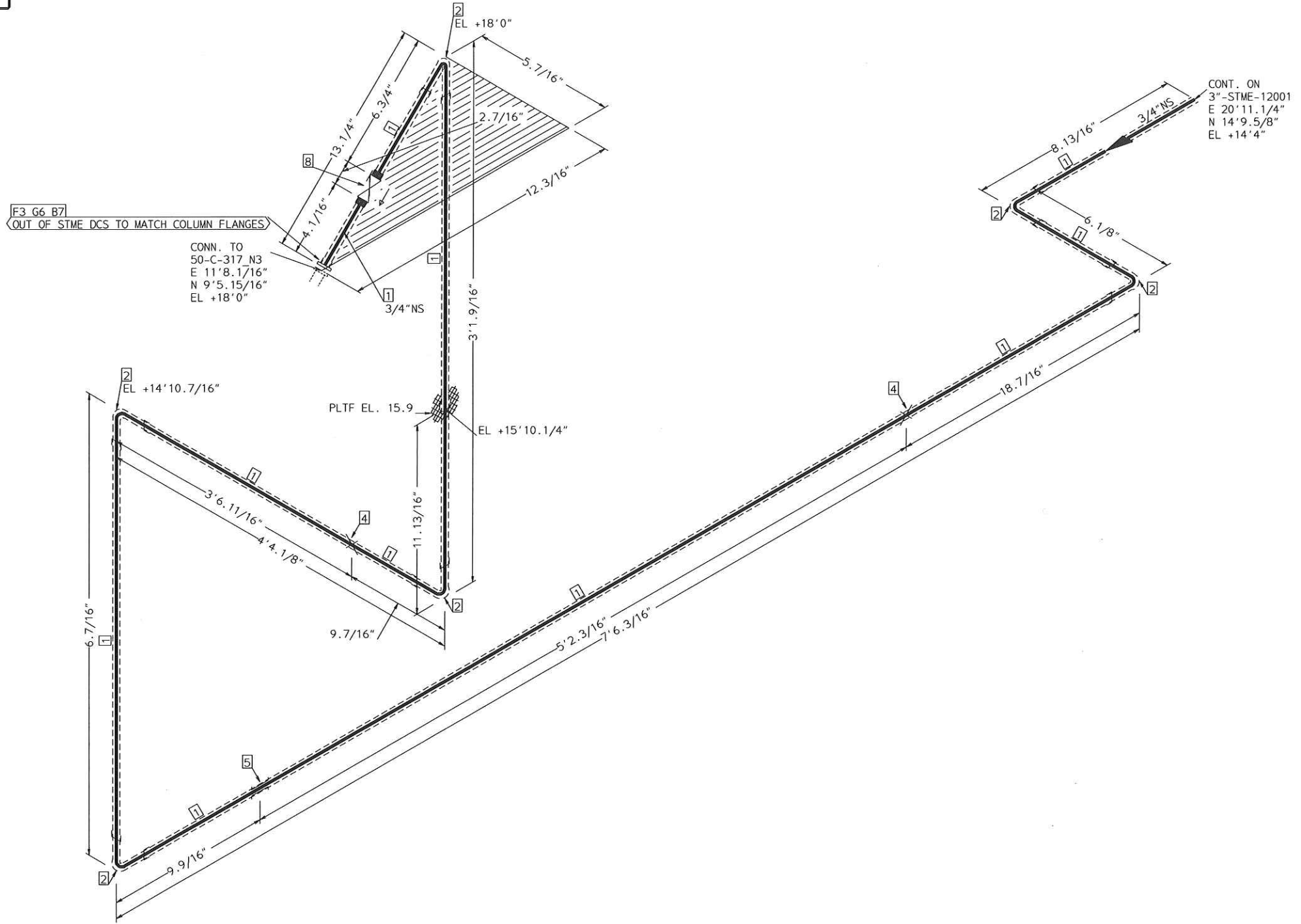


FABRICATION MATERIALS				
PT NO	SPEC	COMPONENT DESCRIPTION	N.S.	QTY
1	STME	PIPE	3/4	0.7'
		PIPE SCH 80 SMLS STL A106-B		
2	STME	FITTINGS	3/4	1
		CAP 3000# SCRDL STL A105		

ERECTION MATERIALS				
PT NO	SPEC	COMPONENT DESCRIPTION	N.S.	QTY
3	STME	VALVES / IN-LINE ITEMS	3/4	1
		GATE 800#SCRDL F6/STL TRIM OS&Y		

AREA: CETYL		3/4" - STME - 12006	
PIPING GA NO: -	P&ID NO: 1012	STRESS CRITICAL: NA	
OP. TEMP: 366°F	OP. PRESS: 150psig	TEST MEDIUM: Service	
DES. TEMP: 366°F	DES. PRESS: 150psig	TEST PRESS: 225psig	
SCALE: NONE	INSUL. TYPE: NS-CELLULAR	INSUL. THK: 2	
LINE NO. / FILE NAME: 3/4" - STME - 12006			ISSUE: R3

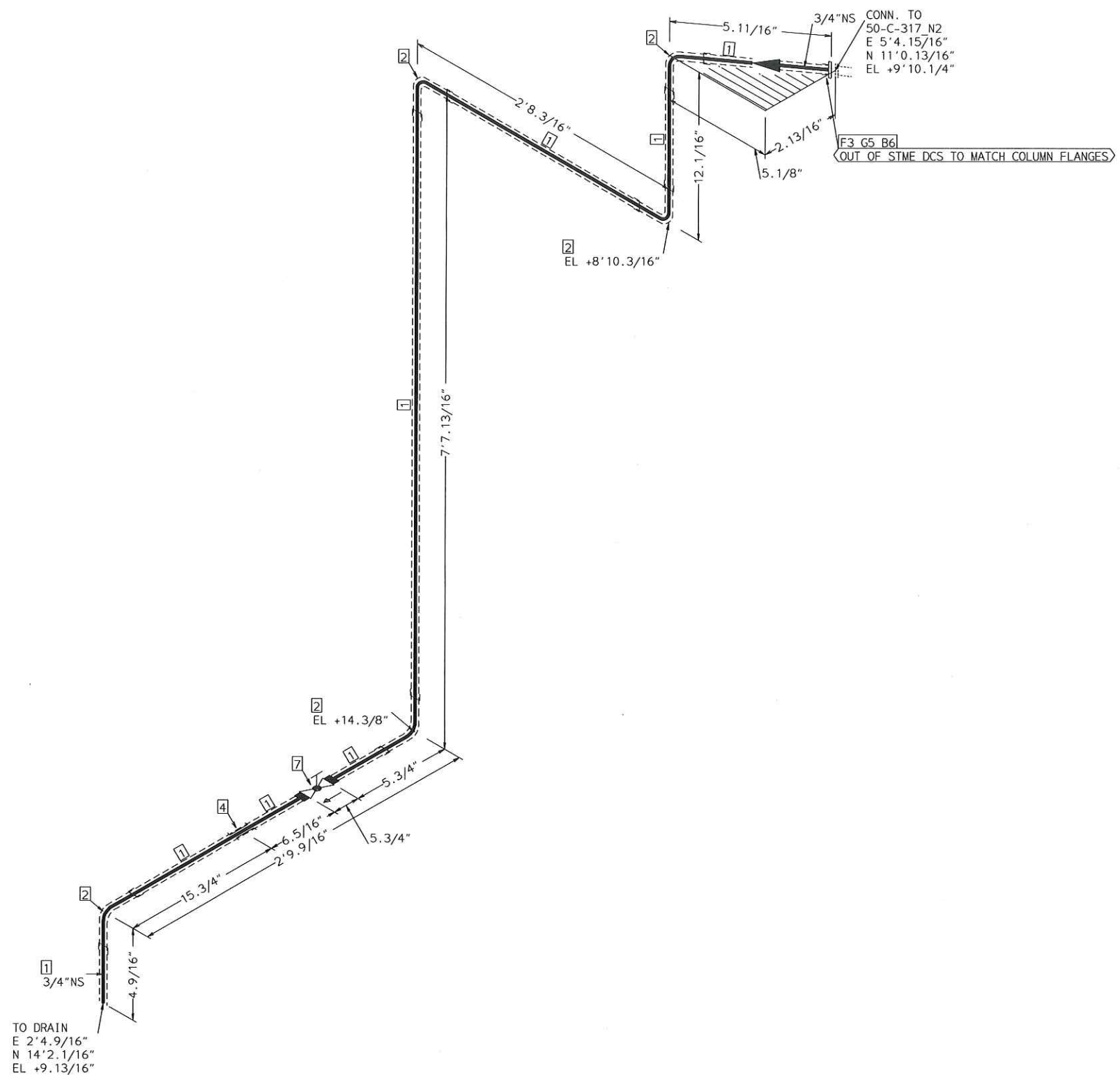
SIZE-A3



FABRICATION MATERIALS				
PT NO	SPEC	COMPONENT DESCRIPTION	N.S.	QTY
1	STME	PIPE		
		PIPE SCH 80 SMLS STL A106-B	3/4	17.1'
2	STME	FITTINGS		
		ELL 90 DEG 2000# SCRD STL A105	3/4	6
3	STME	FLANGES		
		FLG SCRD 300# RF STL A105	3/4	1

ERECTION MATERIALS				
PT NO	SPEC	COMPONENT DESCRIPTION	N.S.	QTY
4	SUPP	FITTINGS		
		SPS-2 RESTING SUPPORT	3/4	2
5	SUPP	SPS-2G GUIDE SUPPORT	3/4	1
6	STME	GASKETS		
		GASKET 300# 1/8" 316 SPRL WND W/FLEXICARB TYPE CG	3/4	1
7	ALCF	BOLTS		
		2.15/16 x5/8" STUD BOLT A193 GR B7 W/2 A194 GR 2H NUTS	11/16	4
8	STME	VALVES / IN-LINE ITEMS		
		GATE 800#SCRD F6/STL TRIM OS&Y	3/4	1

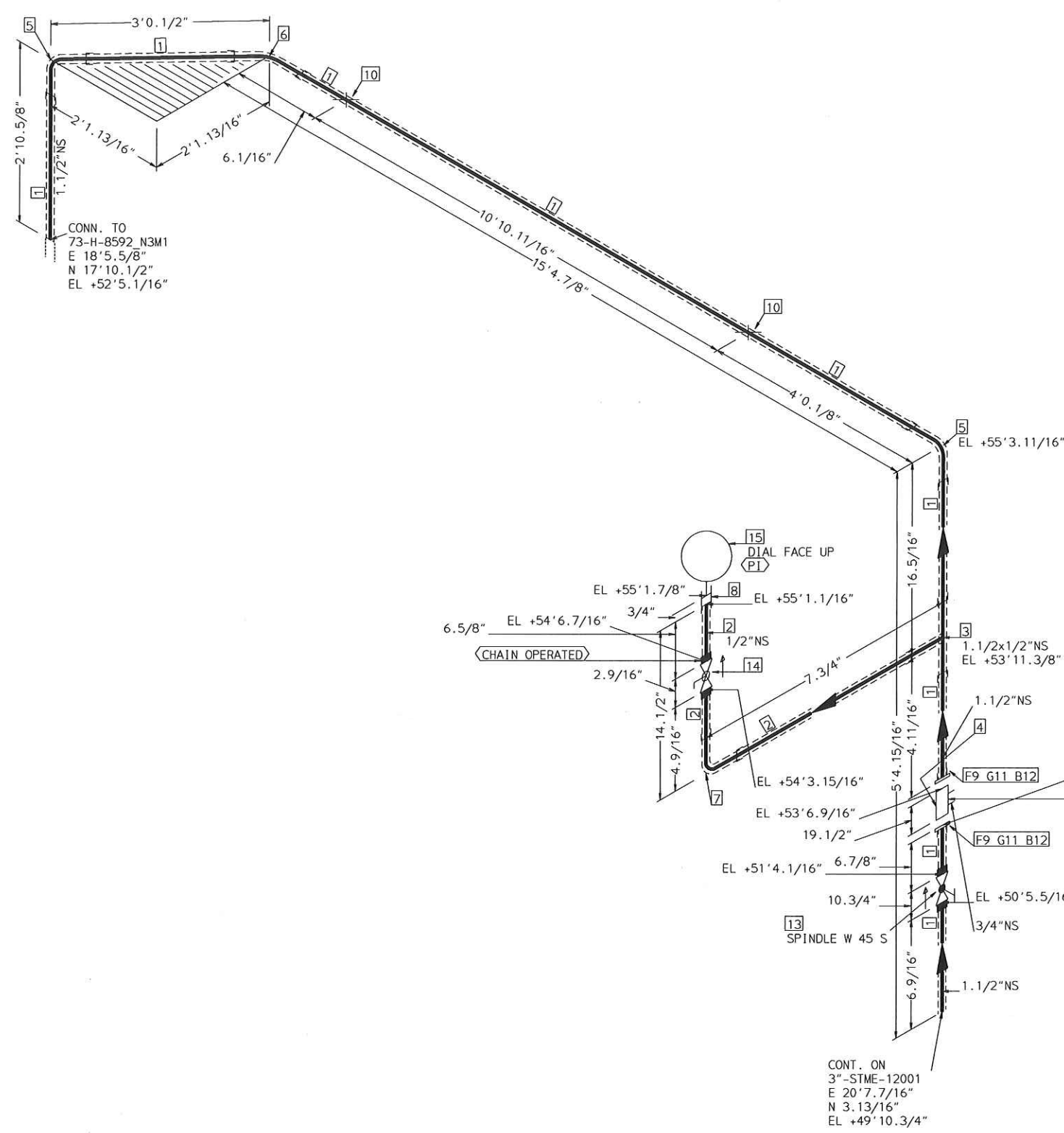
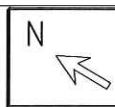
AREA: CETYL		3/4"-STME-20018	
PIPING GA NO: -	P&ID NO: 1020	STRESS CRITICAL: NA	
OP.TEMP: 366°F	OP.PRESS: 150psig	TEST MEDIUM: Hydro	
DES.TEMP: 366°F	DES.PRESS: 150psig	TEST PRESS: 225psig	
SCALE: NONE	INSUL.TYPE: N5-CELLULAR	INSUL.THK: 1.5	
LINE NO. / FILE NAME: 3/4"-STME-20018	ISSUE: R3		SIZE-A3



FABRICATION MATERIALS				
PT NO	SPEC	COMPONENT DESCRIPTION	N.S.	QTY
1	STME	PIPE	3/4	14.0'
		PIPE SCH 80 SMLS STL A106-B		
2	STME	FITTINGS	3/4	5
		ELL 90 DEG 2000# SCRCD STL A105		
3	STME	FLANGES	3/4	1
		FLG SCRCD 300# RF STL A105		
ERECTION MATERIALS				
PT NO	SPEC	COMPONENT DESCRIPTION	N.S.	QTY
4	SUPP	FITTINGS	3/4	1
		SPS-2G GUIDE SUPPORT		
5	STME	GASKETS	3/4	1
		GASKET 300# 1/8" 316 SPRL WND W/FLEXICARB TYPE CG		
6	ALCF	BOLTS	11/16	4
		2.15/16 x5/8" STUD BOLT A193 GR B7 W/2 A194 GR 2H NUTS		
7	STME	VALVES / IN-LINE ITEMS	3/4	1
		GLOBE 800# SCRCD A-105 C. STL STD PRT F6 TRIM		

AREA: CETYL		3/4" -STME-20018C	
PIPING GA NO:	P&ID NO: 1020	STRESS CRITICAL: NA	
OP. TEMP: 366°F	OP. PRESS: 150psig	TEST MEDIUM: Hydro	
DES. TEMP: 366°F	DES. PRESS: 150psig	TEST PRESS: 225psig	
SCALE: NONE	INSUL. TYPE: NS-CELLULAR	INSUL. THK: 1.5	
LINE NO. / FILE NAME: 3/4" -STME-20018C			ISSUE: R3

SIZE-A3



CONN. TO
73-H-8592 N3M1
E 18'5.5/8"
N 17'10.1/2"
EL +52'5.1/16"

15 DIAL FACE UP
14 CHAIN OPERATED
13 SPINDLE W 45 S
CONT. ON 3"-STME-12001
E 20'7.7/16"
N 3.13/16"
EL +49'10.3/4"

CONT. ON 1.1/2"-STME-02013
E 20'10.3/4"
N 3.13/16"
EL +52'2.5/16"

EL +55'1.7/8"
EL +55'1.1/16"
EL +54'6.7/16"
EL +54'3.15/16"
EL +53'6.9/16"
EL +51'4.1/16"
EL +50'5.5/16"
EL +51'10.15/16"
EL +53'11.3/8"

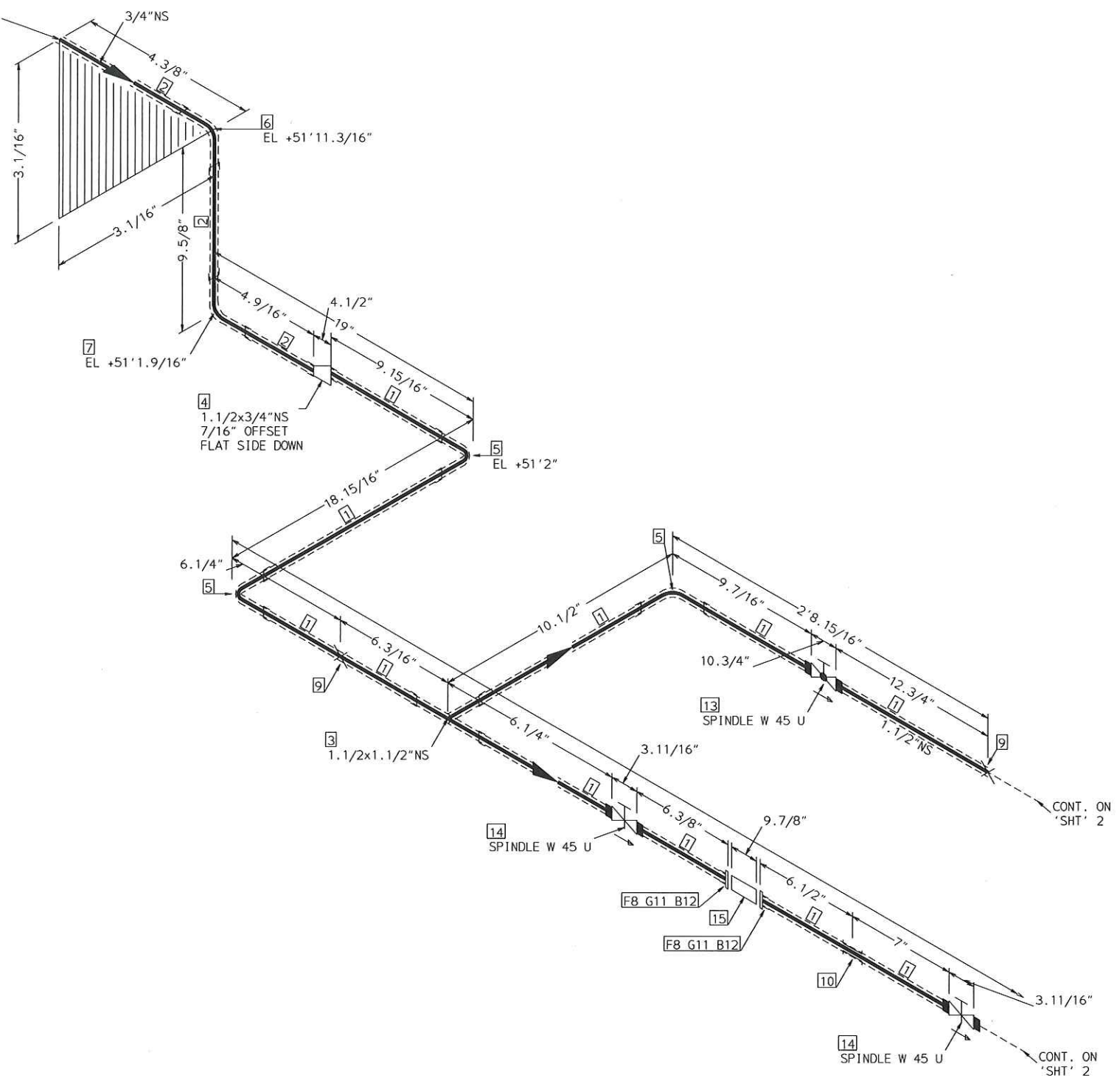
FABRICATION MATERIALS				
PT NO	SPEC	COMPONENT DESCRIPTION	N.S.	QTY
PIPE				
1	STME	PIPE SCH 80 SMLS STL A106-B	1.1/2	23.4'
2	STME	PIPE SCH 80 SMLS STL A106-B	1/2	1.4'
FITTINGS				
3	STME	TEE 2000# SCRDL STL A105	1.1/2	1
4	STME	LCF SEPARATOR 150# RF	1.1/2	1
5	STME	ELL 90 DEG 2000# SCRDL STL A105	1.1/2	2
6	STME	ELL 45 DEG 2000# SCRDL STL A105	1.1/2	1
7	STME	ELL 90 DEG 2000# SCRDL STL A105	1/2	1
8	STME	COUPLING FULL 3000# SCRDL STL A105	1/2	1
FLANGES				
9	STME	FLG SCRDL 150# RF STL A105	1.1/2	2
ERECTION MATERIALS				
PT NO	SPEC	COMPONENT DESCRIPTION	N.S.	QTY
FITTINGS				
10	SUPP	SPS-2 RESTING SUPPORT	1.1/2	2
GASKETS				
11	STME	GASKET 150# 1/8" 316 SPRL WND W/FLEXICARB TYPE CG	1.1/2	2
BOLTS				
12	STME	2.3/4 x 1/2" STUD BOLT A193 GR B7 W/2 A194 GR 2H NUTS	9/16	8
VALVES / IN-LINE ITEMS				
13	STME	GLOBE 800# SCRDL A-105 C. STL STD PRT F6 TRIM	1.1/2	1
14	STME	BALL 1500# SCRDL CS FULL PORT 3 PIECE	1/2	1
INSTRUMENTS				
15	STME	PRESSURE INDICATOR	1/2	1

AREA: CETYL	1.1/2"-STME-02004	
PIPING GA NO: -	P&ID NO: 1002	STRESS CRITICAL: NA
OP. TEMP: 366°F	OP. PRESS: 150 psig	TEST MEDIUM: Service
DES. TEMP: 366°F	DES. PRESS: 150 psig	TEST PRESS: 225 psig
SCALE: NONE	INSUL. TYPE: NS-CELLULAR	INSUL. THK: 1.5 inch
LINE NO. / FILE NAME: 1.1/2"-STME-02004	ISSUE: R3	

SIZE-A3



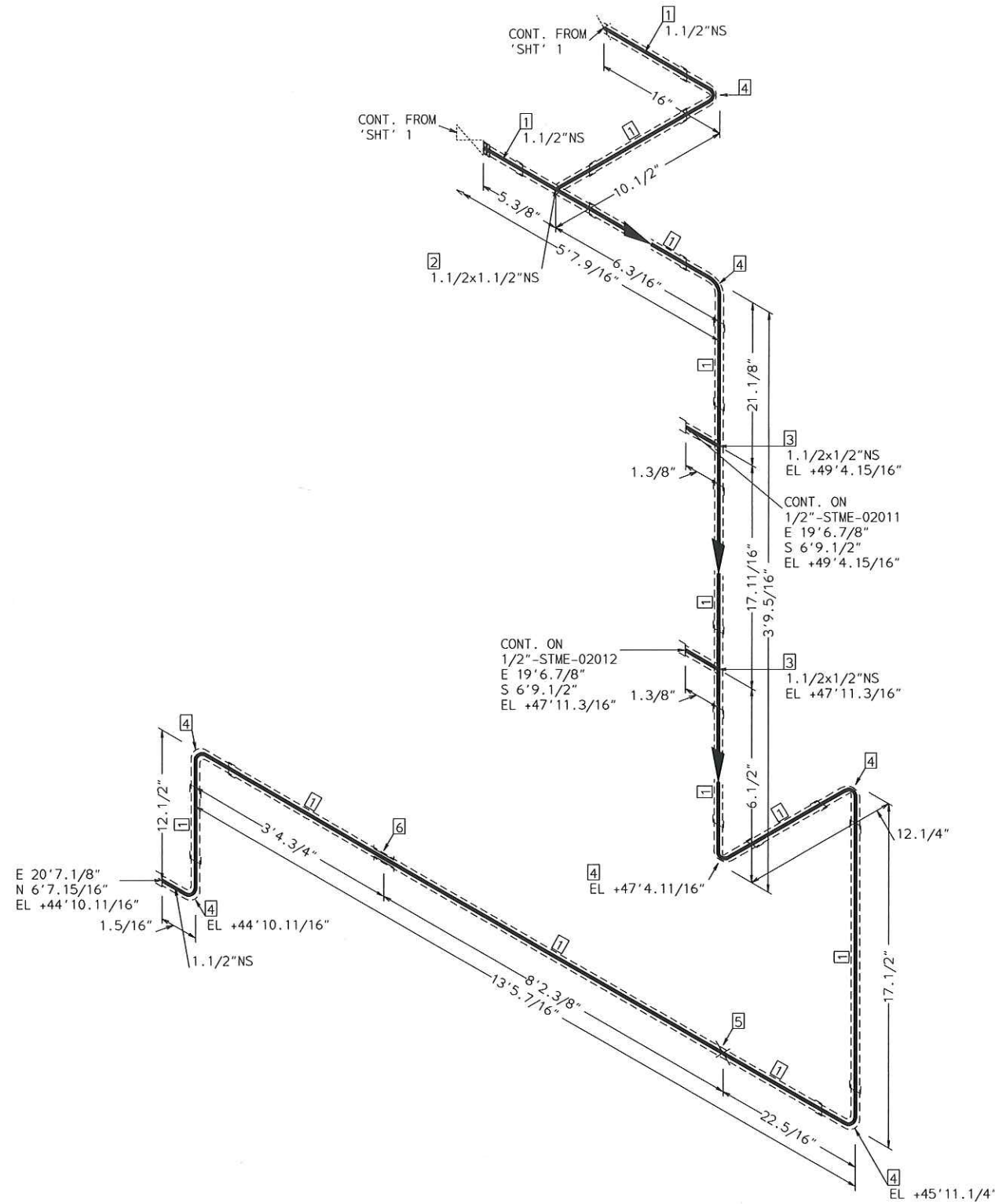
CONT. ON
 1.1/2"-STME-02004
 E 20'10.3/4"
 N 3.13/16"
 EL +52'2.5/16"



FABRICATION MATERIALS				
PT NO	SPEC	COMPONENT DESCRIPTION	N.S.	QTY
PIPE				
1	STME	PIPE SCH 80 SMLS STL A106-B	1.1/2	7.4'
2	STME	PIPE SCH 80 SMLS STL A106-B	3/4	1.4'
FITTINGS				
3	STME	TEE 2000# SCRDR STL A105	1.1/2	1
4	STME	SWAGE ECC XS STL A234 GR WPB TBE	1.1/2	1
5	STME	ELL 90 DEG 2000# SCRDR STL A105	1.1/2	3
6	STME	ELL 45 DEG 2000# SCRDR STL A105	3/4	1
7	STME	ELL 90 DEG 2000# SCRDR STL A105	3/4	1
FLANGES				
8	STME	FLG SCRDR 150# RF STL A105	1.1/2	2
ERECTION MATERIALS				
PT NO	SPEC	COMPONENT DESCRIPTION	N.S.	QTY
FITTINGS				
9	SUPP	SPS-2 RESTING SUPPORT	1.1/2	2
10	SUPP	SPS-2G GUIDE SUPPORT	1.1/2	1
GASKETS				
11	STME	GASKET 150# 1/8" 316 SPRL WND W/FLEXICARB TYPE CG	1.1/2	2
BOLTS				
12	STME	2.3/4 x1/2" STUD BOLT A193 GR B7 W/2 A194 GR 2H NUTS	9/16	8
VALVES / IN-LINE ITEMS				
13	STME	GLOBE 800# SCRDR A-105 C. STL STD PRT F6 TRIM	1.1/2	1
14	STME	GATE 800#SCRDR F6/STL TRIM OS&Y	1.1/2	2
15	STME	BALL FLOAT TYPE STEAM TRAP 150#RF	1.1/2	1

AREA: CETYL	1.1/2"-STME-02013	
PIPING GA NO: -	P&ID NO: 1002	STRESS CRITICAL: NA
OP. TEMP: 366°F	OP. PRESS: 150psig	TEST MEDIUM: Service
DES. TEMP: 366°F	DES. PRESS: 150psig	TEST PRESS: 225psig
SCALE: NONE	INSUL. TYPE: NS-CELLULAR	INSUL. THK: 1
LINE NO. / FILE NAME: 1.1/2"-STME-02013	ISSUE: R3	

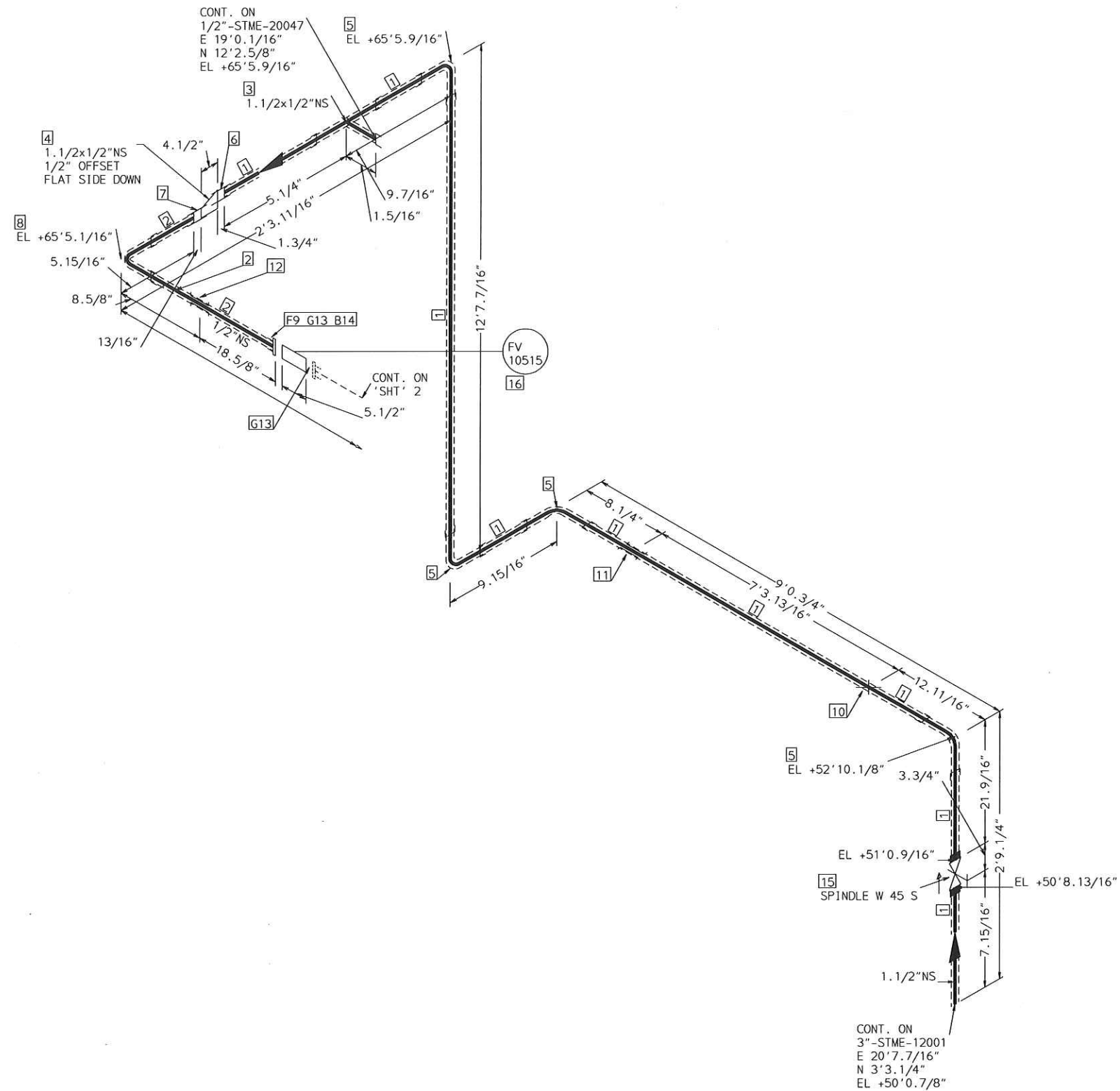
SIZE-A3



FABRICATION MATERIALS				
PT NO	SPEC	COMPONENT DESCRIPTION	N.S.	QTY
1	STME	PIPE		
		PIPE SCH 80 SMLS STL A106-B	1.1/2	21.7'
2	STME	FITTINGS		
		TEE 2000# SCRD STL A105	1.1/2	1
3	STME	FITTINGS		
		TEE 2000# SCRD STL A105	1.1/2	2
4	STME	ELL 90 DEG 2000# SCRD STL A105	1.1/2	7

ERECTION MATERIALS				
PT NO	SPEC	COMPONENT DESCRIPTION	N.S.	QTY
5	SUPP	FITTINGS		
		SPS-2 RESTING SUPPORT	1.1/2	1
6	SUPP	SPS-2G GUIDE SUPPORT	1.1/2	1

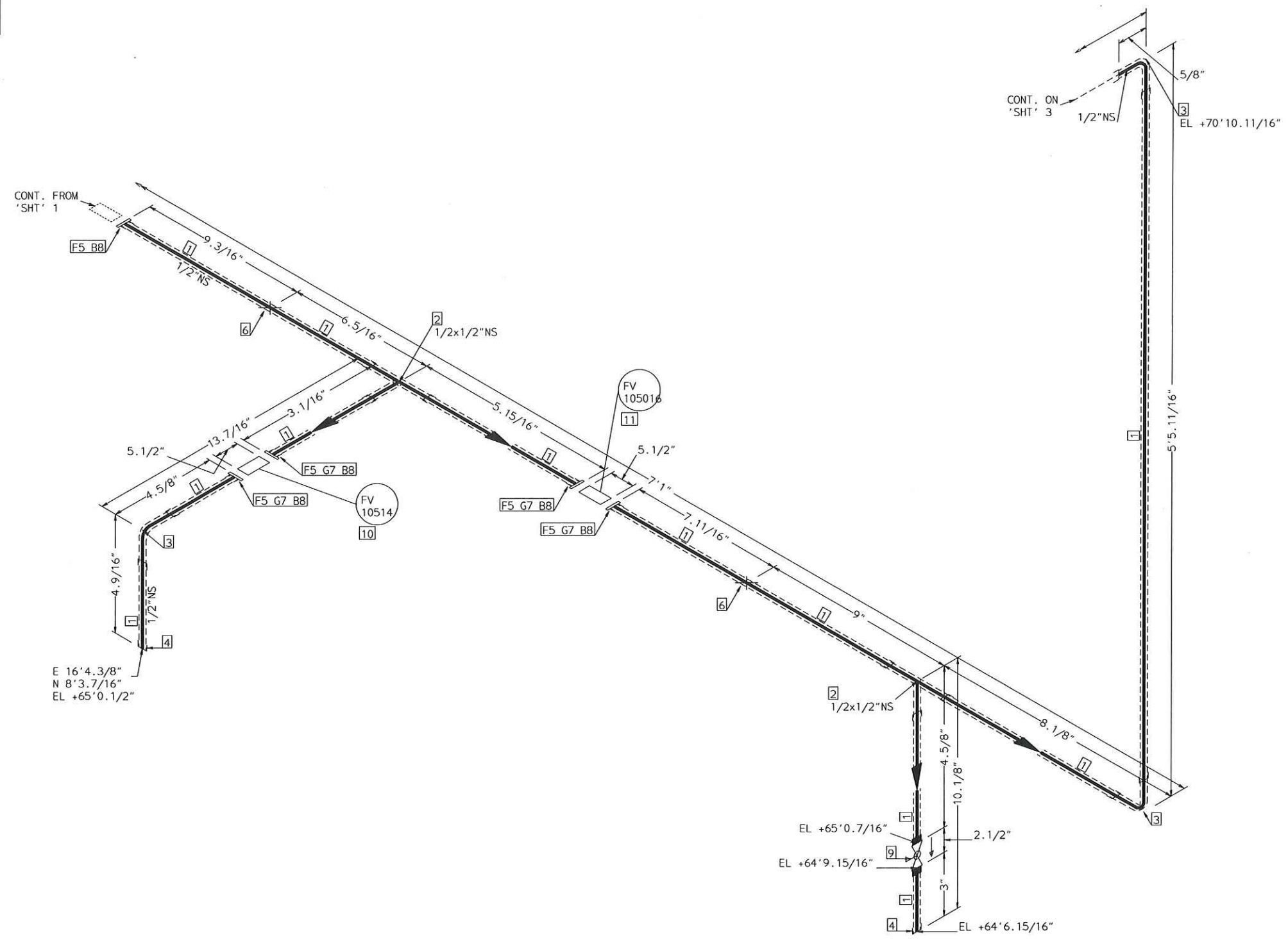
AREA: CETYL		1.1/2"-STME-02013	
PIPING GA NO: -	P&ID NO: 1002	STRESS CRITICAL: NA	
OP.TEMP: 366°F	OP.PRESS: 150psig	TEST MEDIUM: Service	
DES.TEMP: 366°F	DES.PRESS: 150psig	TEST PRESS: 225psig	
SCALE: NONE	INSUL.TYPE: NS-CELLULAR	INSUL.THK: 1	
LINE NO. / FILE NAME: 1.1/2"-STME-02013			ISSUE: R3



FABRICATION MATERIALS				
PT NO	SPEC	COMPONENT DESCRIPTION	N.S.	QTY
PIPE				
1	STME	PIPE SCH 80 SMLS STL A106-B	1.1/2	25.1'
2	STME	PIPE SCH 80 SMLS STL A106-B	1/2	2.7'
FITTINGS				
3	STME	TEE 2000# SCRDL STL A105	1.1/2	1
4	STME	SWAGE ECC XS STL A234 GR WPB TBE	1.1/2	1
5	STME	ELL 90 DEG 2000# SCRDL STL A105	1.1/2	4
6	STME	COUPLING FULL 3000# SCRDL STL A105	1.1/2	1
7	STME	COUPLING FULL 3000# SCRDL STL A105	1/2	1
8	STME	ELL 90 DEG 2000# SCRDL STL A105	1/2	1
FLANGES				
9	STME	FLG SCRDL 300# RF STL A105	1/2	1
ERECTION MATERIALS				
PT NO	SPEC	COMPONENT DESCRIPTION	N.S.	QTY
FITTINGS				
10	SUPP	SPS-2 RESTING SUPPORT	1.1/2	1
11	SUPP	SPS-2G GUIDE SUPPORT	1.1/2	1
12	SUPP	SPS-2G GUIDE SUPPORT	1/2	1
GASKETS				
13	STME	GASKET 300# 1/8" 316 SPRL WND W/FLEXICARB TYPE CG	1/2	2
BOLTS				
14	STME	2.9/16 x1/2" STUD BOLT A193 GR B7 W/2 A194 GR 2H NUTS	9/16	4
VALVES / IN-LINE ITEMS				
15	STME	GATE 800#SCRDL F6/STL TRIM OS&Y	1.1/2	1
INSTRUMENTS				
16		ON-OFF VALVE 300# RF FV 10515	1/2	1

AREA: CETYL		1.1/2"-STME-20015	
PIPING GA NO: -	P&ID NO: 1020	STRESS CRITICAL: NA	
OP.TEMP: 366°F	OP.PRESS: 150psig	TEST MEDIUM: Service	
DES.TEMP: 366°F	DES.PRESS: 150psig	TEST PRESS: 225psig	
SCALE: NONE	INSUL.TYPE: NS-CELLULAR	INSUL.THK: 1.5	
LINE NO. / FILE NAME: 1.1/2"-STME-20015			ISSUE: R3

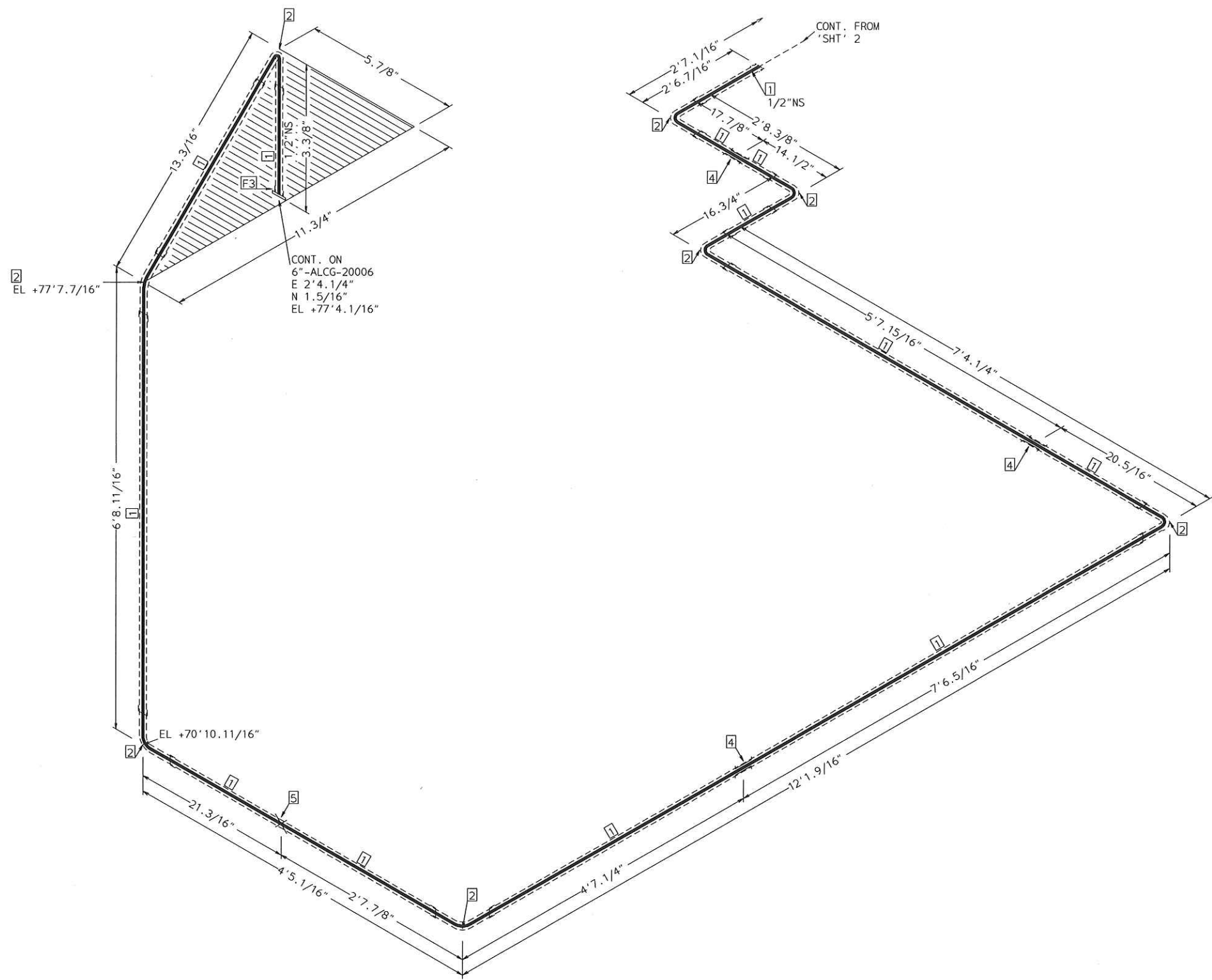
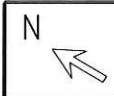
SIZE-A3



FABRICATION MATERIALS				
PT NO	SPEC	COMPONENT DESCRIPTION	N.S.	QTY
1	STME	PIPE	1/2	10.4'
		PIPE SCH 80 SMLS STL A106-B		
2	STME	FITTINGS	1/2 x	2
		TEE 2000# SCRD STL A105		
3	STME	ELL 90 DEG 2000# SCRD STL A105	1/2	3
4	STME	CAP 3000# SCRD STL A105	1/2	2
5	STME	FLANGES	1/2	5
		FLG SCRD 300# RF STL A105		
ERECTION MATERIALS				
PT NO	SPEC	COMPONENT DESCRIPTION	N.S.	QTY
6	SUPP	FITTINGS	1/2	2
		SPS-2 RESTING SUPPORT		
7	STME	GASKETS	1/2	4
		GASKET 300# 1/8" 316 SPRL WND W/FLEXICARB TYPE CG		
8	STME	BOLTS	9/16	20
		2.9/16 x 1/2" STUD BOLT A193 GR B7 W/2 A194 GR 2H NUTS		
9	STME	VALVES / IN-LINE ITEMS	1/2	1
		BALL 1500# SCRD CS FULL PORT 3 PIECE		
10	STME	INSTRUMENTS	1/2	1
		ON-OFF VALVE 300# RF FV 10514		
11	STME	ON-OFF VALVE 300# RF FV 105016	1/2	1

AREA: CETYL	1.1/2"-STME-20015	
PIPING GA NO: -	P&ID NO: 1020	STRESS CRITICAL: NA
OP.TEMP: 366°F	OP.PRESS: 150psig	TEST MEDIUM: Service
DES.TEMP: 366°F	DES.PRESS: 150psig	TEST PRESS: 225psig
SCALE: NONE	INSUL.TYPE: NS-CELLULAR	INSUL.THK: 1.5
LINE NO. / FILE NAME: 1.1/2"-STME-20015	ISSUE: R3	

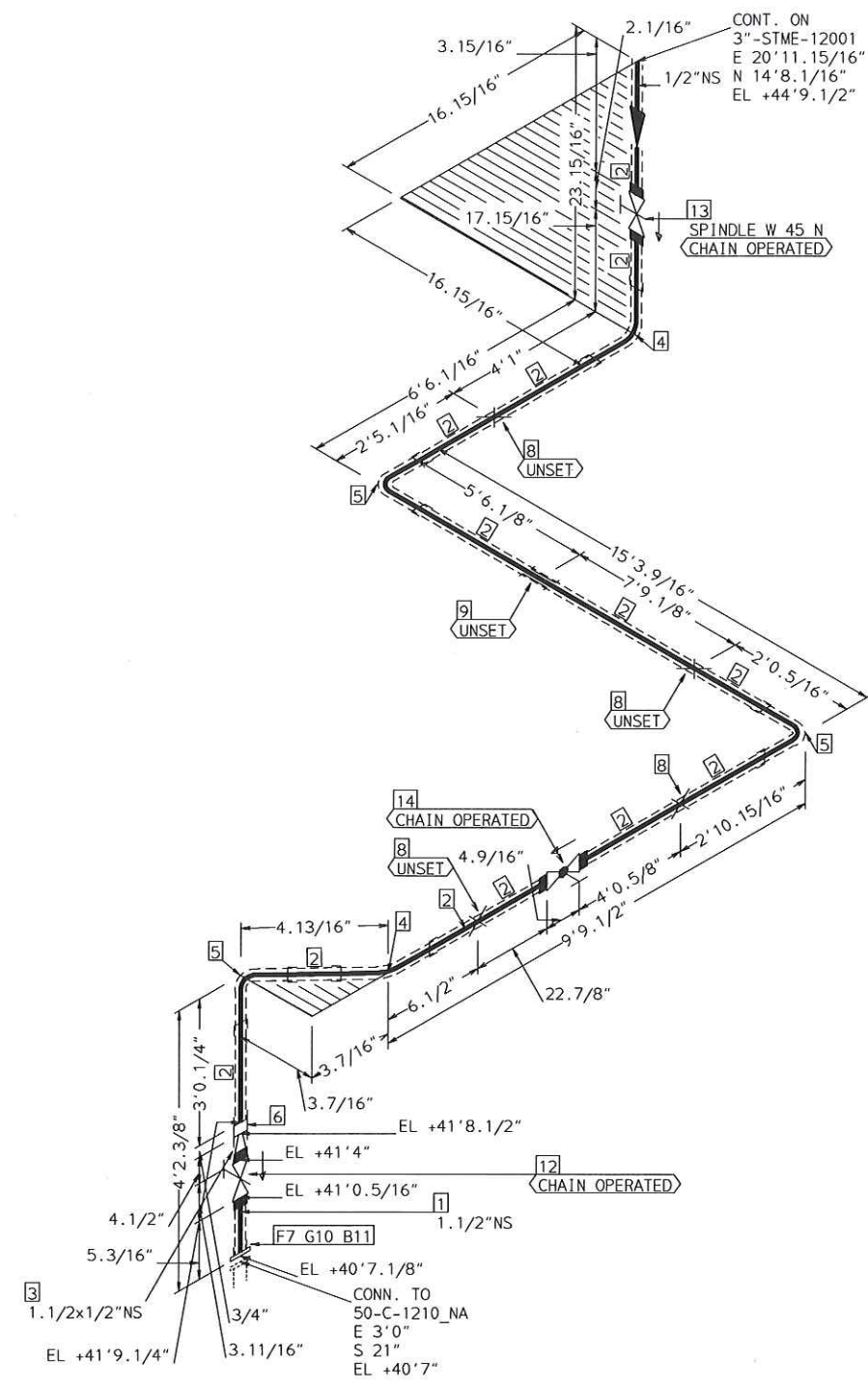
SIZE-A3



FABRICATION MATERIALS				
PT NO	SPEC	COMPONENT DESCRIPTION	N.S.	QTY
1	STME	PIPE	1/2	37.9'
		PIPE SCH 80 SMLS STL A106-B		
2	STME	FITTINGS	1/2	8
		ELL 90 DEG 2000# SCR D STL A105		
3	STME	FLANGES	1/2	1
		FLG SCR D 150# RF STL A105		
ERECTION MATERIALS				
PT NO	SPEC	COMPONENT DESCRIPTION	N.S.	QTY
4	SUPP	FITTINGS	1/2	3
		SPS-2G GUIDE SUPPORT		
5	SUPP	SPS-2 RESTING SUPPORT	1/2	1

AREA: CETYL	1.1/2"-STME-20015	
PIPING GA NO: -	P&ID NO: 1020	STRESS CRITICAL: NA
OP.TEMP: 366°F	OP.PRESS: 150psig	TEST MEDIUM: Service
DES.TEMP: 366°F	DES.PRESS: 150psig	TEST PRESS: 225psig
SCALE: NONE	INSUL.TYPE: NS-CELLULAR	INSUL.THK: 1.5
LINE NO. / FILE NAME: 1.1/2"-STME-20015	ISSUE: R3	

SIZE-A3



FABRICATION MATERIALS				
PT NO	SPEC	COMPONENT DESCRIPTION	N.S.	QTY
PIPE				
1	STME	PIPE SCH 80 SMLS STL A106-B	1.1/2	0.5'
2	STME	PIPE SCH 80 SMLS STL A106-B	1/2	36.1'
FITTINGS				
3	STME	SWAGE CONC XS STL A234 GR WPB TBE	1.1/2	1
4	STME	ELL 45 DEG 2000# SCRDL STL A105	1/2	2
5	STME	ELL 90 DEG 2000# SCRDL STL A105	1/2	3
6	STME	COUPLING FULL 3000# SCRDL STL A105	1/2	1
FLANGES				
7	STME	FLG SCRDL 150# RF STL A105	1.1/2	1
ERECTION MATERIALS				
PT NO	SPEC	COMPONENT DESCRIPTION	N.S.	QTY
FITTINGS				
8	SUPP	SPS-2 RESTING SUPPORT	1/2	4
9	SUPP	SPS-2G GUIDE SUPPORT	1/2	1
GASKETS				
10	STME	GASKET 150# 1/8" 316 SPRL WND W/FLEXICARB TYPE CG	1.1/2	1
BOLTS				
11	STME	2.3/4 x1/2" STUD BOLT A193 GR B7 W/2 A194 GR 2H NUTS	9/16	4
VALVES / IN-LINE ITEMS				
12	STME	GATE 800#SCRDL F6/STL TRIM OS&Y	1.1/2	1
13	STME	GATE 800#SCRDL F6/STL TRIM OS&Y	1/2	1
14	STME	GLOBE 800# SCRDL A-105 C. STL STD PRT F6 TRIM	1/2	1

AREA: CETYL	1.1/2"-STME-20029	
PIPING GA NO: -	P&ID NO: 1020	STRESS CRITICAL: NA
OP. TEMP: 366°F	OP. PRESS: 150psig	TEST MEDIUM: Service
DES. TEMP: 366°F	DES. PRESS: 150psig	TEST PRESS: 225psig
SCALE: NONE	INSUL. TYPE: N5-CELLULAR	INSUL. THK: 2
LINE NO. / FILE NAME: 1.1/2"-STME-20029	ISSUE: R3	

SIZE-A3