

**Section 2**

**Staging, Equipment Analysis and Traffic Control**

**EXHIBIT 2.1.B**

**Framing Crane Specifications  
(5 pages)**

# rated load charts

Span (ft)	4'-0"	6'-0"	8'-0"	10'-0"	12'-0"	14'-0"	16'-0"	18'-0"	20'-0"	22'-0"	24'-0"	26'-0"	28'-0"	30'-0"
Capacity (lbs)	3,950	3,000	2,500	2,100	1,750	1,450	1,200	1,000	850	750	650	550	450	350

Maximum Height at 20' Span: 11'-0"

Maximum Height at 30' Span: 11'-0"

Span (ft)	4'-0"	6'-0"	8'-0"	10'-0"	12'-0"	14'-0"	16'-0"	18'-0"	20'-0"	22'-0"	24'-0"	26'-0"	28'-0"	30'-0"
Capacity (lbs)	3,950	3,000	2,500	2,100	1,750	1,450	1,200	1,000	850	750	650	550	450	350

Maximum Height at 20' Span: 11'-0"

Maximum Height at 30' Span: 11'-0"

Span (ft)	4'-0"	6'-0"	8'-0"	10'-0"	12'-0"	14'-0"	16'-0"	18'-0"	20'-0"	22'-0"	24'-0"	26'-0"	28'-0"	30'-0"
Capacity (lbs)	3,950	3,000	2,500	2,100	1,750	1,450	1,200	1,000	850	750	650	550	450	350

Maximum Height at 20' Span: 11'-0"

Maximum Height at 30' Span: 11'-0"

Span (ft)	4'-0"	6'-0"	8'-0"	10'-0"	12'-0"	14'-0"	16'-0"	18'-0"	20'-0"	22'-0"	24'-0"	26'-0"	28'-0"	30'-0"
Capacity (lbs)	3,950	3,000	2,500	2,100	1,750	1,450	1,200	1,000	850	750	650	550	450	350

Maximum Height at 20' Span: 11'-0"

Maximum Height at 30' Span: 11'-0"

Span (ft)	4'-0"	6'-0"	8'-0"	10'-0"	12'-0"	14'-0"	16'-0"	18'-0"	20'-0"	22'-0"	24'-0"	26'-0"	28'-0"	30'-0"
Capacity (lbs)	3,950	3,000	2,500	2,100	1,750	1,450	1,200	1,000	850	750	650	550	450	350

Maximum Height at 20' Span: 11'-0"

Maximum Height at 30' Span: 11'-0"

Span (ft)	4'-0"	6'-0"	8'-0"	10'-0"	12'-0"	14'-0"	16'-0"	18'-0"	20'-0"	22'-0"	24'-0"	26'-0"	28'-0"	30'-0"
Capacity (lbs)	3,950	3,000	2,500	2,100	1,750	1,450	1,200	1,000	850	750	650	550	450	350

Maximum Height at 20' Span: 11'-0"

Maximum Height at 30' Span: 11'-0"

Span (ft)	4'-0"	6'-0"	8'-0"	10'-0"	12'-0"	14'-0"	16'-0"	18'-0"	20'-0"	22'-0"	24'-0"	26'-0"	28'-0"	30'-0"
Capacity (lbs)	3,950	3,000	2,500	2,100	1,750	1,450	1,200	1,000	850	750	650	550	450	350

Maximum Height at 20' Span: 11'-0"

Maximum Height at 30' Span: 11'-0"

Span (ft)	4'-0"	6'-0"	8'-0"	10'-0"	12'-0"	14'-0"	16'-0"	18'-0"	20'-0"	22'-0"	24'-0"	26'-0"	28'-0"	30'-0"
Capacity (lbs)	3,950	3,000	2,500	2,100	1,750	1,450	1,200	1,000	850	750	650	550	450	350

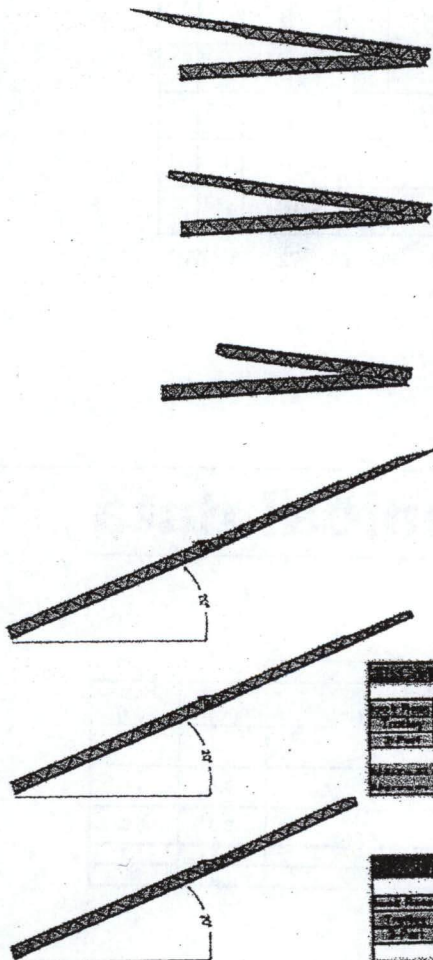
Maximum Height at 20' Span: 11'-0"

Maximum Height at 30' Span: 11'-0"

Span (ft)	4'-0"	6'-0"	8'-0"	10'-0"	12'-0"	14'-0"	16'-0"	18'-0"	20'-0"	22'-0"	24'-0"	26'-0"	28'-0"	30'-0"
Capacity (lbs)	3,950	3,000	2,500	2,100	1,750	1,450	1,200	1,000	850	750	650	550	450	350

Maximum Height at 20' Span: 11'-0"

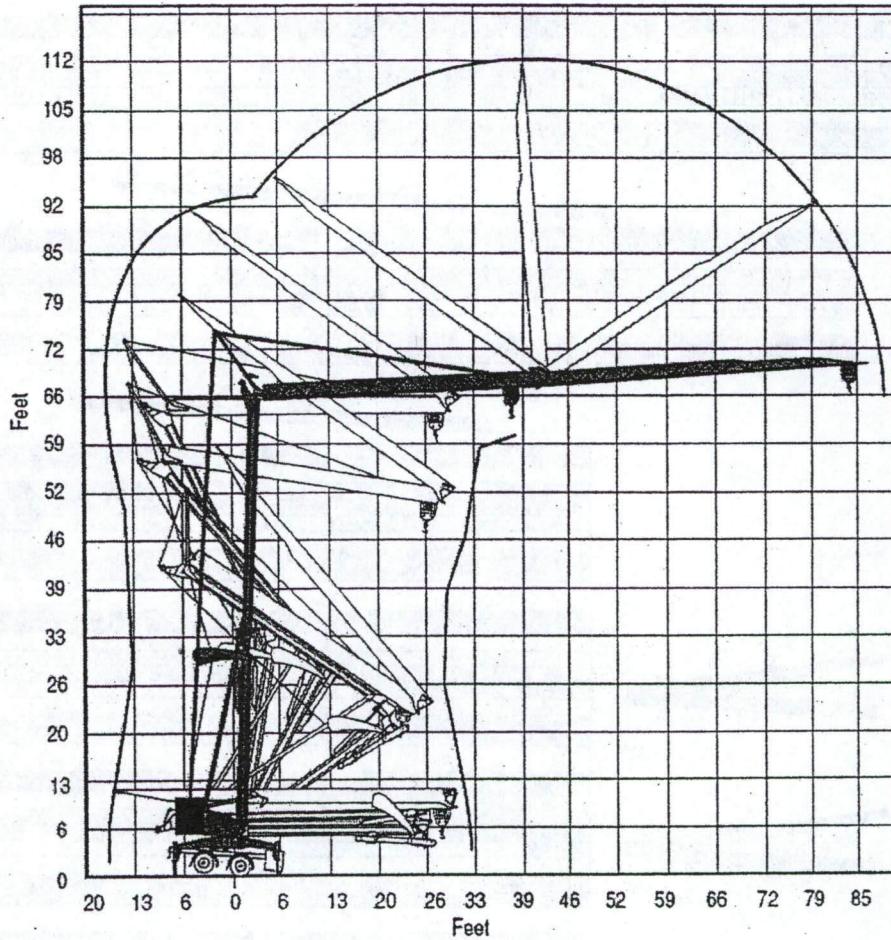
Maximum Height at 30' Span: 11'-0"



190 MA21



# outline dimensions



# mechanical data

## Igo MA21

Function	Hoist Type	Hoist Type	Speed vs Weight	2-part			Motor (hp)	Motor (kW)
				1st Gear	2nd Gear	3rd Gear		
Hoist	8 LVF 9 Optima	220 V	f/min	↑ 11 ↓ 11	↑ 23 ↓ 52	↑ 59 ↓ 118	3.9	2.9
		26 A	lbs	3,968	3,968	1,543		
		220 V	f/min	↑ 11 ↓ 11	↑ 36 ↓ 52	↑ 82 ↓ 118	6.1	4.6
		41 A	lbs	3,968	3,968	1,543		
		480 V	f/min	↑ 11 ↓ 11	↑ 52 ↓ 52	↑ 118 ↓ 118	8.9	6.6
			lbs	3,968	3,968	1,543		
Trolley	1 DVF 4-1		f/min	46 to 118 (1,543 lbs) & 46 to 92 (3,968 lbs)			1.8	1.3
Swing	HVF 20		rpm	1.0			1.8	1.3

Power Requirements: 220 V (+6% or -10%) 60 Hz measured at turn table.

Amperage 2.9 kW: 26 Amp (single phase)

Amperage 4.6 kW: 41 Amp (single phase)

Power Requirements: 480 V (+6% or -10%) 60 Hz measured at turn table.

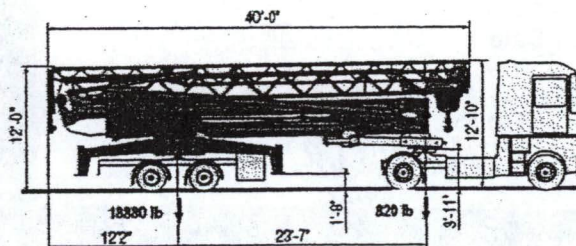
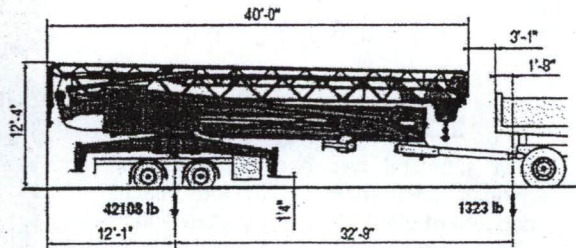
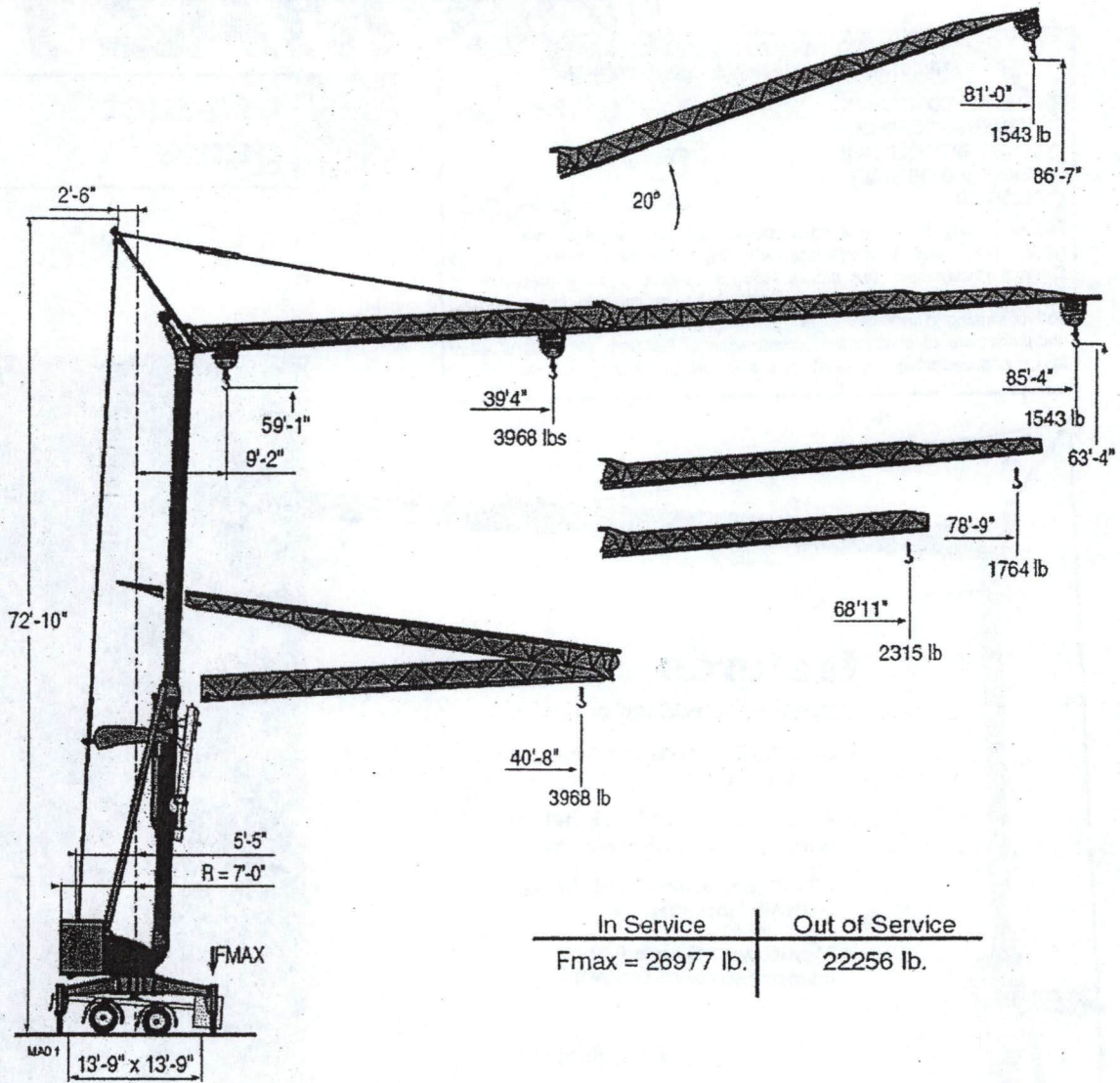
Amperage 8 LVF 9: 17 Amp (3 phase service with ground)

Igo MA21

**POTAIN**



# outline dimensions



190 MA21

POTAIN



**Igo**

**MA21** 

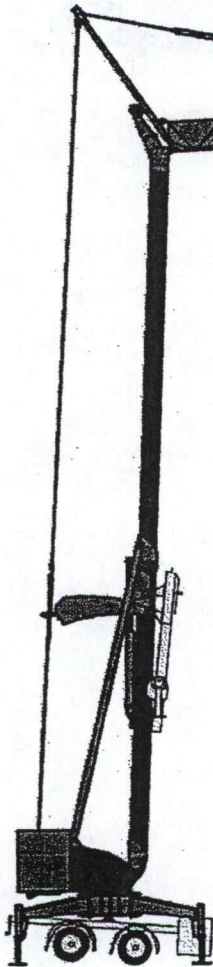
VAN TILBURG, BANVARD & SODERBERG  
ARCHITECTURE • PLANNING • URBAN DESIGN

NO EXCEPTIONS TAKEN  
 FURNISH AS CORRECTED  
 SUBMIT SPECIFIED ITEM  
 REVISE AND RESUBMIT  
 REJECTED

S.D. # 06100-00  
 BY *CL*  
 DATE 07/18/07

Review is only for general conformance with the design concept of the project and general compliance with the information included in the Contract Documents. Any shown action is subject to the requirements of the drawings and specifications. Contractor is responsible for: correlating and confirming dimensions at the job site; choice of fabrication processes and techniques of construction; coordination of his work with that of other trades and performing the work in a safe and satisfactory manner.

**product guide**



**features**

- 3,968 lb. maximum capacity
- 85'-4" maximum operating hook radius
- 86'-7" maximum hook height with jib set at 20 degrees
- 63'-4" maximum hook height with jib horizontal
- Manitowoc Crane Care comprehensive Support

Submittal No.:

061-06100-00

SUBMITTAL REVIEW

This submittal has been reviewed for general conformance with the design concept of the project and in compliance with the contract plans and specifications.

BENCHMARK CONTRACTORS, INC.

Date: *JUL 03 2007*

Job No. *06601*  
 Subcon. *DVR*  
*PK*

**contents**

Outline Dimensions	<b>2</b>
Outline Dimensions	<b>3</b>
Rated Load Charts Mechanical Data	<b>4</b>
CraneCare	<b>5</b>



# CraneCARE

CraneCARE is Manitowoc's complete service and support program. Incorporated into this program are service training, immediate parts availability, professional field service, and technical support and documentation. CraneCARE is available for every one of the thousands of cranes operating all over the world.

That's dedication and devotion that you won't get anywhere else.

That's CraneCARE.

## Service Training

A certified Manitowoc service specialist works with you in your training facility or in the field to ensure that you know how to achieve maximum performance, dependability, and years from your cranes.

A reputable Manitowoc Service technician comes to you to provide valuable training to all distributors on the crane's LMI system.

## Parts Availability

Genuine Manitowoc replacement parts may be obtained through your MCG distributor on a regular basis.

## Field Service

Factory-trained service experts are always ready to help maintain your crane's peak performance.

For a worldwide listing of dealer locations, please consult our website at: [www.manitowoccranes.com](http://www.manitowoccranes.com).

## Technical Support

Manitowoc's dealer network and factory personnel are available 24 hours a day, 7 days a week, 365 days a year to answer your technical questions and more.

For a worldwide listing of dealer locations, please consult our website at: [www.manitowoccranes.com](http://www.manitowoccranes.com).

## Technical Documentation

Manitowoc boasts an extensive, easy-to-understand library of documentation.

A complete set of Operator's parts and service manuals are included with each crane.

Additional copies are available through your Authorized Manitowoc Distributor.

190 MA21