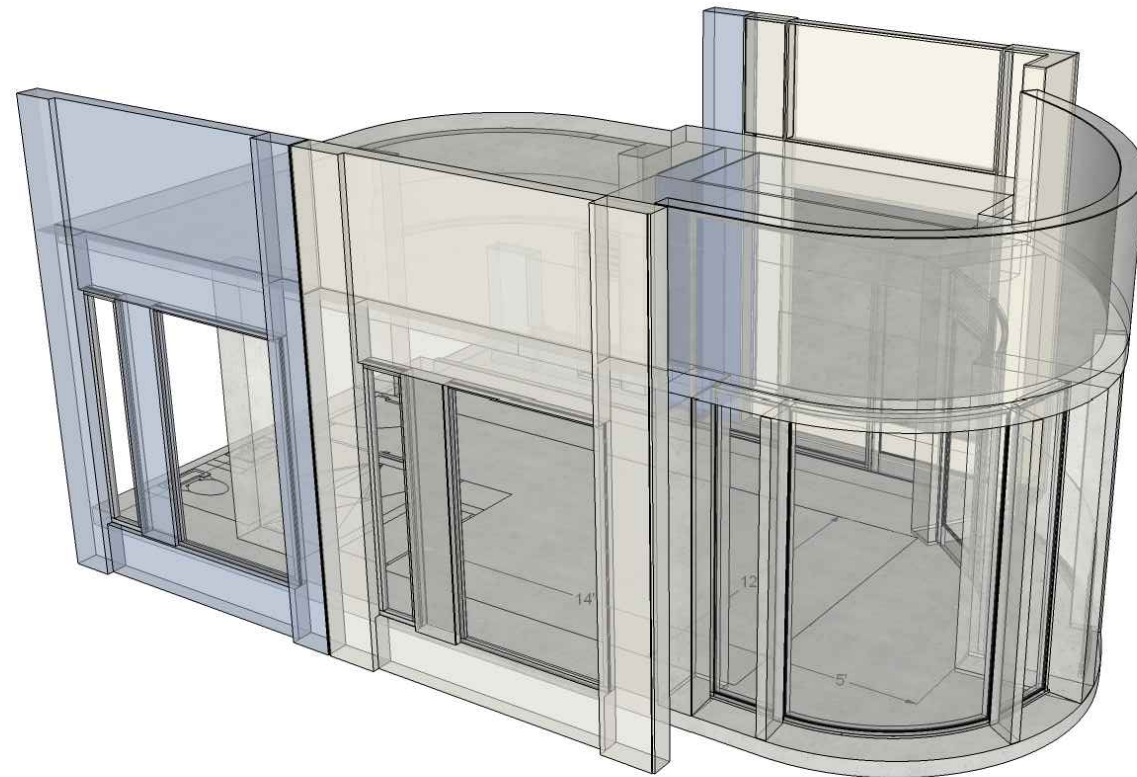


710 WILSHIRE BLVD. MOCK-UP

SANTA MONICA, CALIFORNIA 90401

MIXED-USE HOTEL PROJECT

NOTES:
FOR GENERAL NOTES SEE
SHEET A-002B

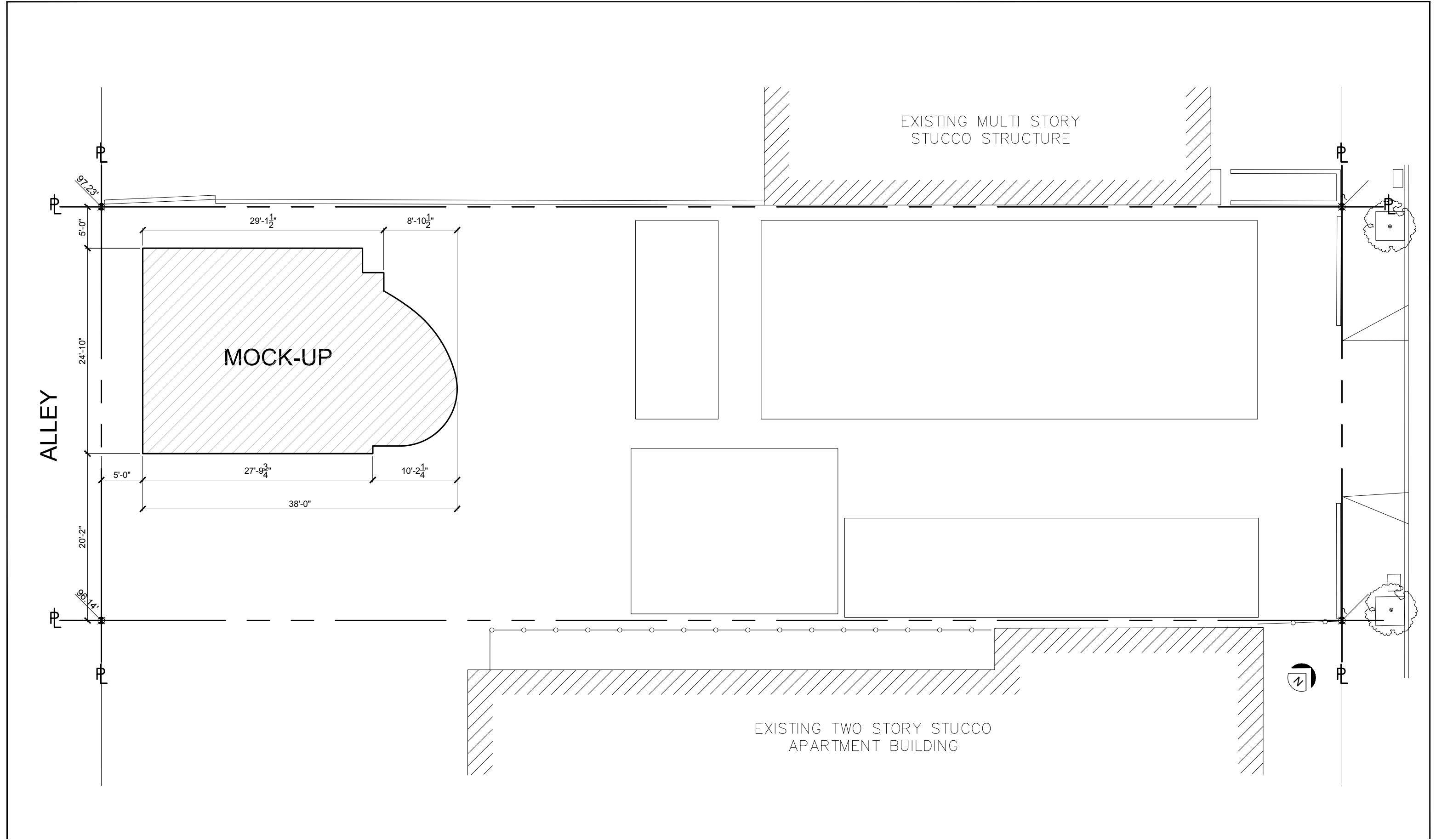


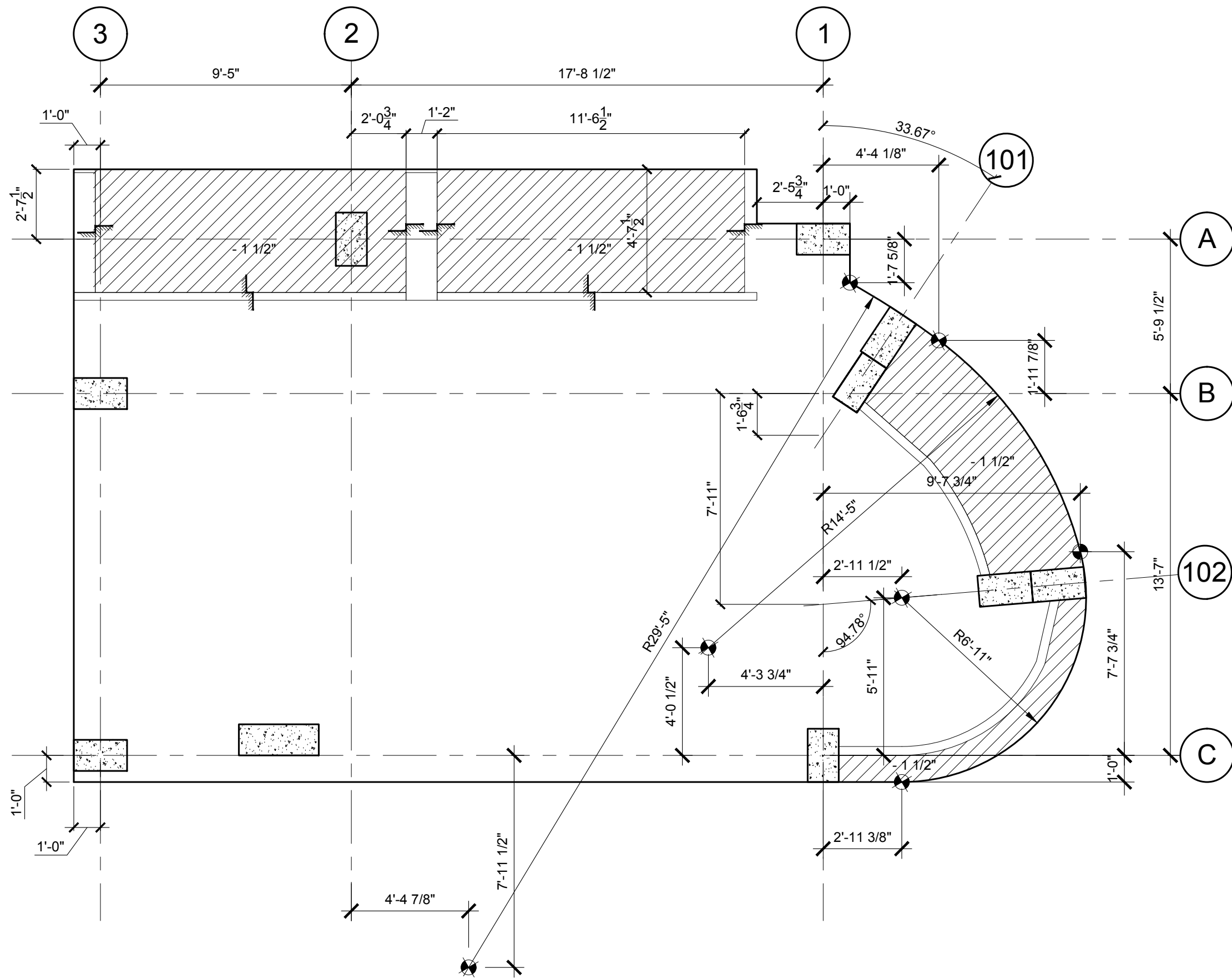
INDEX:

A-001	COVER SHEET
A-100	SITE PLAN
A-101	LEVEL 1 SLAB PLAN
A-102	LEVEL 2 SLAB PLAN
A-111	LEVEL 1 PLAN
A-112	LEVEL 2 SLAB PLAN
A-121	REFLECTED CEILING PLAN
A-201	BUILDING ELEVATION
A-202	BUILDING ELEVATION
A-203	BUILDING ELEVATION
A-204	BUILDING ELEVATION
A-301	BUILDING SECTION
A-801	DOOR & WINDOW SCHEDULE

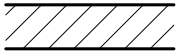
REFER TO ADDENDUM 06:


A-002B	GENERAL & FIRE LIFE SAFETY NOTES
A-226	ENLARGED GUEST ROOM PLANS
A-310	GFRC DETAILS
A-601	TYPICAL WALL DETAILS
A-603	TYPICAL CEILING DETAILS
A-620	WINDOW DETAILS
A-630	PLASTER DETAILS





LEGEND:

DEPRESSION 

DENOTES STARTING POINT AND CENTER POINT OF CURVE 

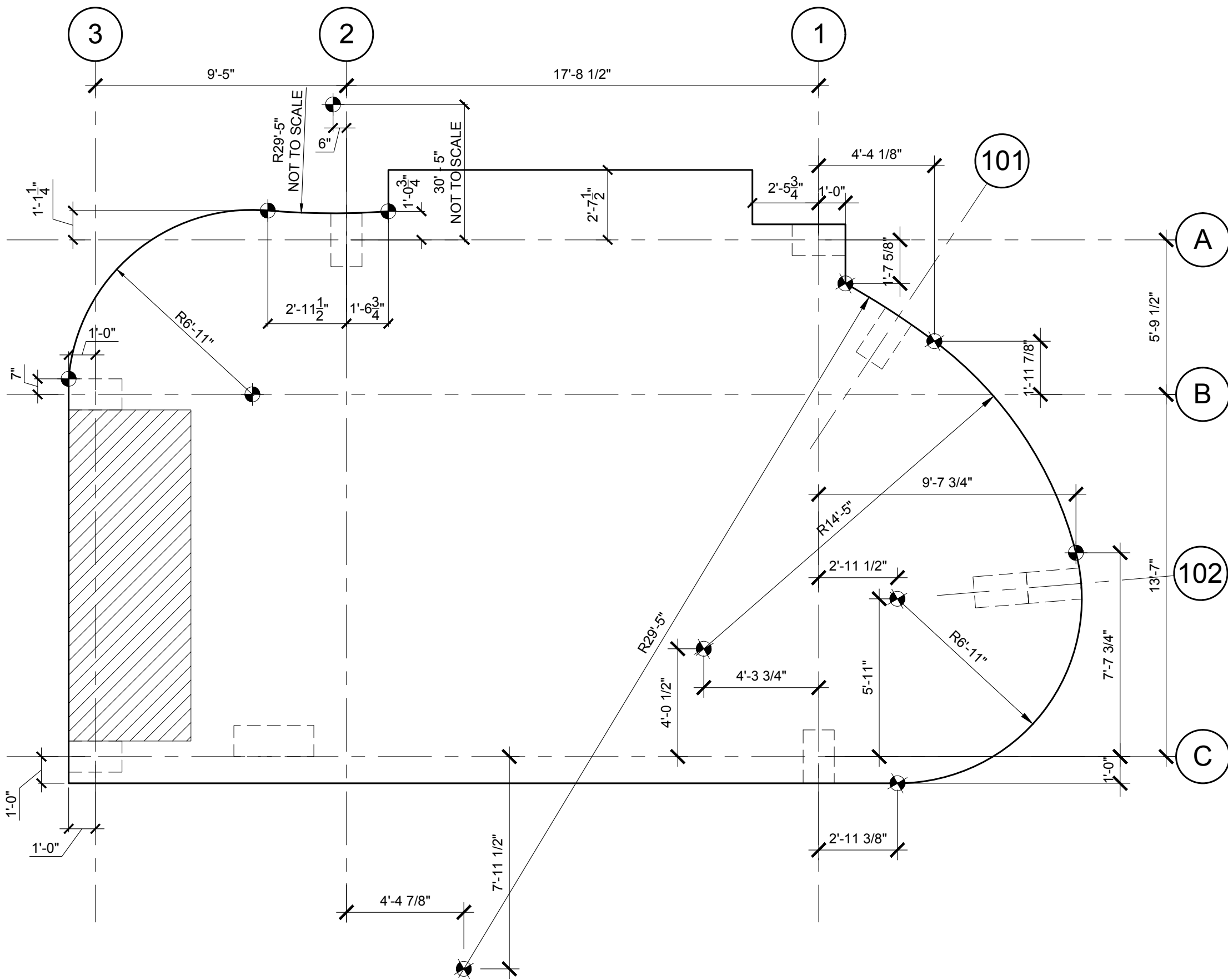
CONSULTANTS

hla howard laks architects
 1545 twelfth street voice : 310-393-4455
 santa monica, ca 90401 fax : 310-393-2230


710 WILSHIRE BOULEVARD
 SANTA MONICA - CALIFORNIA, 90401
 MIXED-USE HOTEL PROJECT


LEVEL 1 SLAB PLAN
 SCALE: 1/4" = 1'-0"

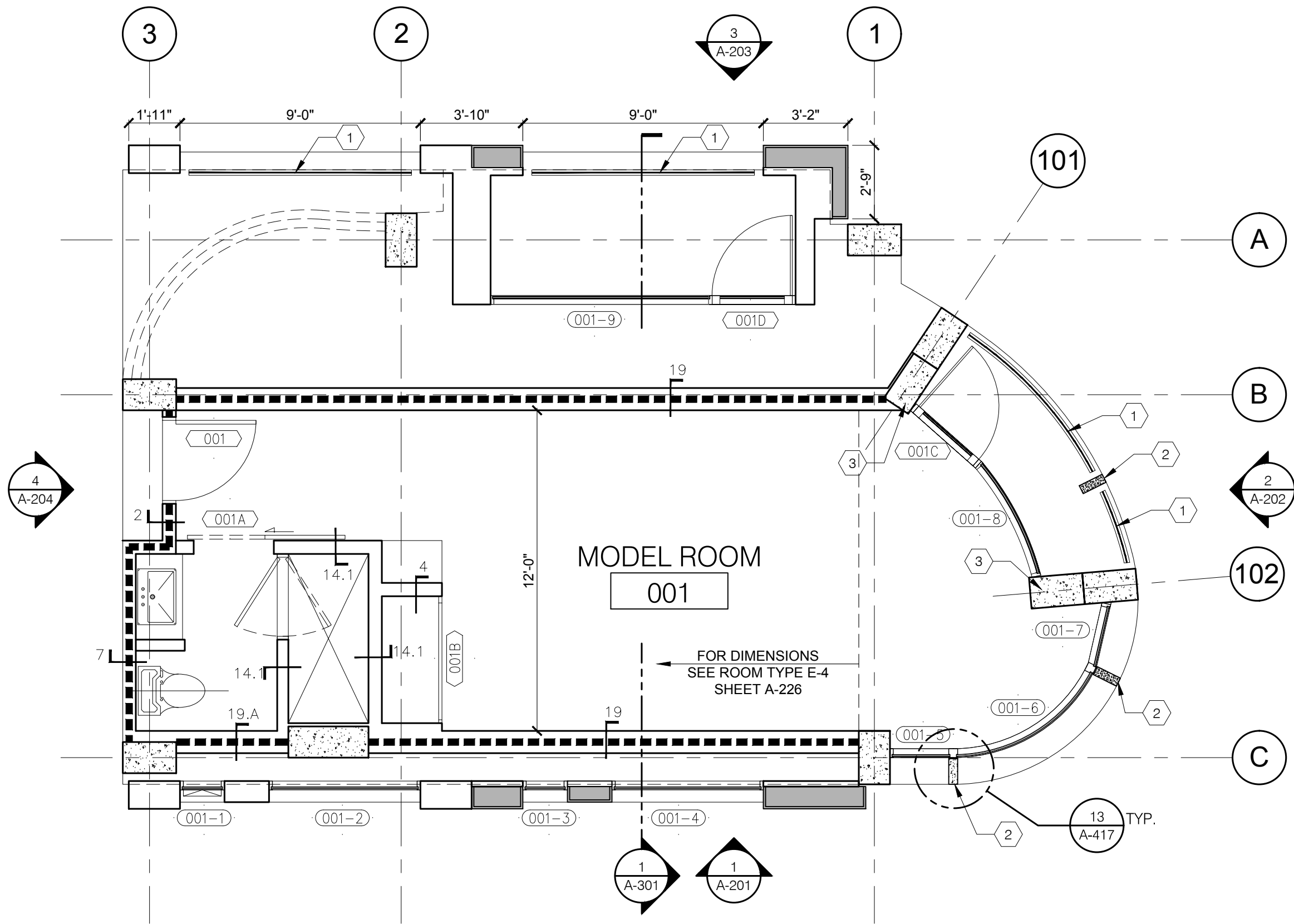
A-101
 2016-11-30



LEGEND:

DEPRESSION 

DENOTES STARTING POINT AND CENTER POINT OF CURVE 



LEGEND:

CONCRETE COLUMNS

NON-RATED WALLS

1 HOUR RATED WALLS

GFRC PANEL WALL SYSTEM

REFER TO SHEET A-601 FOR ALL WALL TYPES

PLAN KEYNOTES:

1 GLASS GUARDRAIL

2 PRE-CAST CONCRETE FIN

3 CONCRETE EXTENDED COLUMN, SEE STRUCTURAL DETAIL 15/S-404

CONSULTANTS

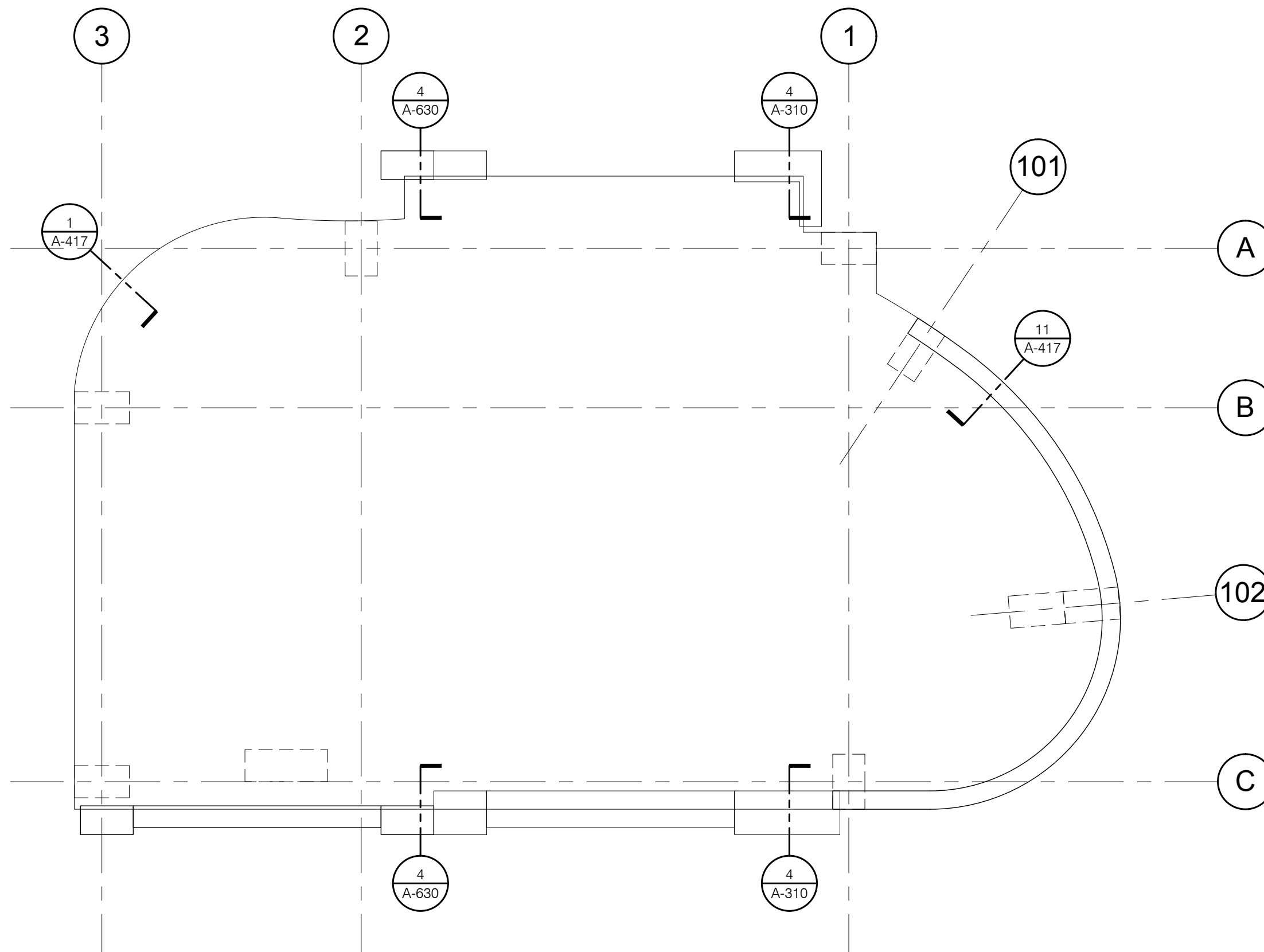
hla howard laks architects
 1545 twelfth street
 santa monica, ca 90401
 voice : 310-393-4455
 fax : 310-393-2230

710 WILSHIRE BOULEVARD
 SANTA MONICA - CALIFORNIA, 90401
 MIXED-USE HOTEL PROJECT

LEVEL 1 PLAN
 SCALE: 1/4" = 1'-0"

A-111
 2016-11-30

MBD-007.02



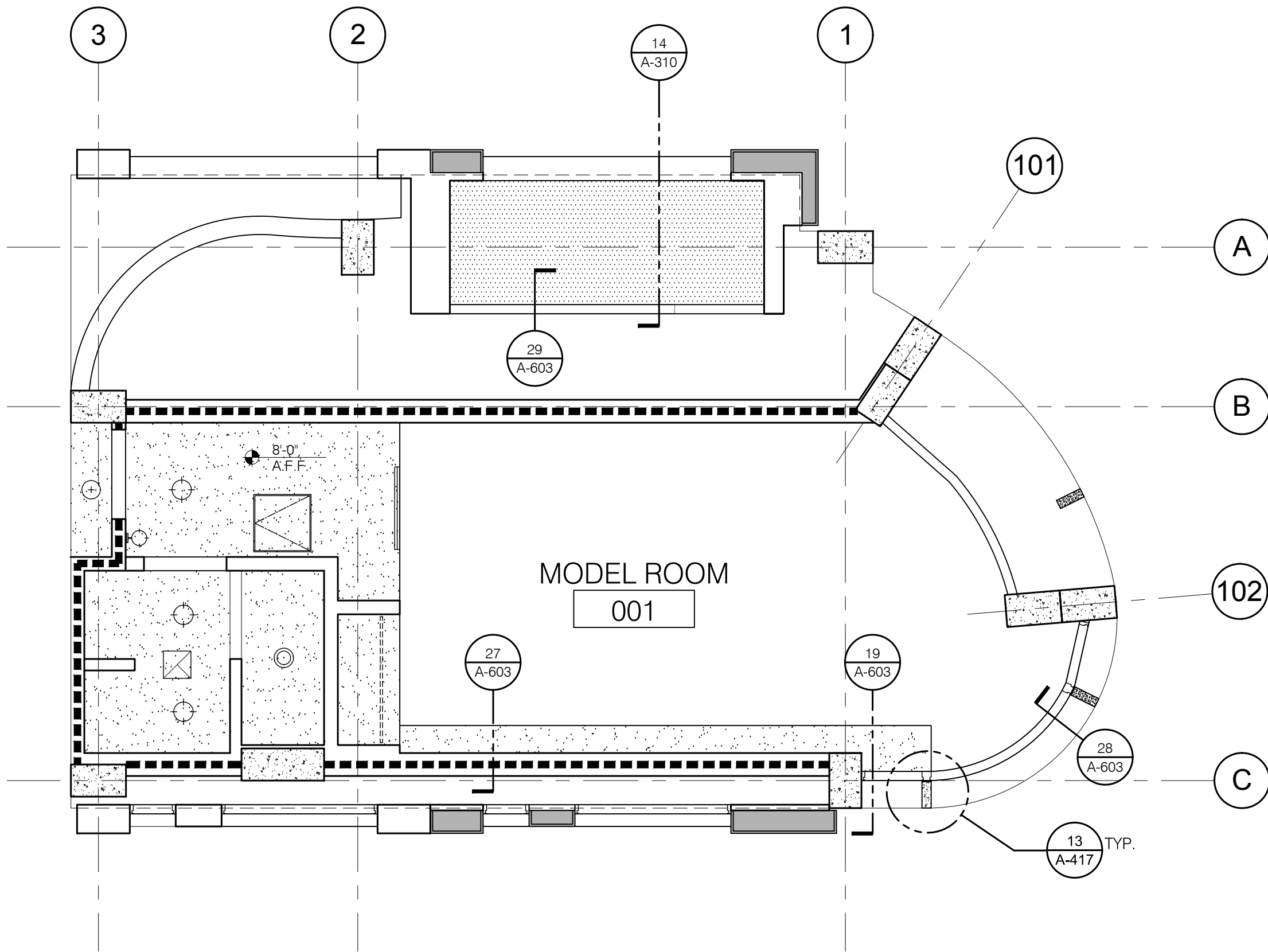
LEGEND:

- CONCRETE COLUMNS
- NON-RATED WALLS
- 1 HOUR RATED WALLS
- GFRC PANEL WALL SYSTEM

REFER TO SHEET A-601 FOR ALL WALL TYPES

PLAN KEYNOTES:

- GLASS GUARDRAIL
- PRE-CAST CONCRETE FIN
- CONCRETE EXTENDED COLUMN, SEE STRUCTURAL DETAIL 15/S-404



RCP LEGEND:

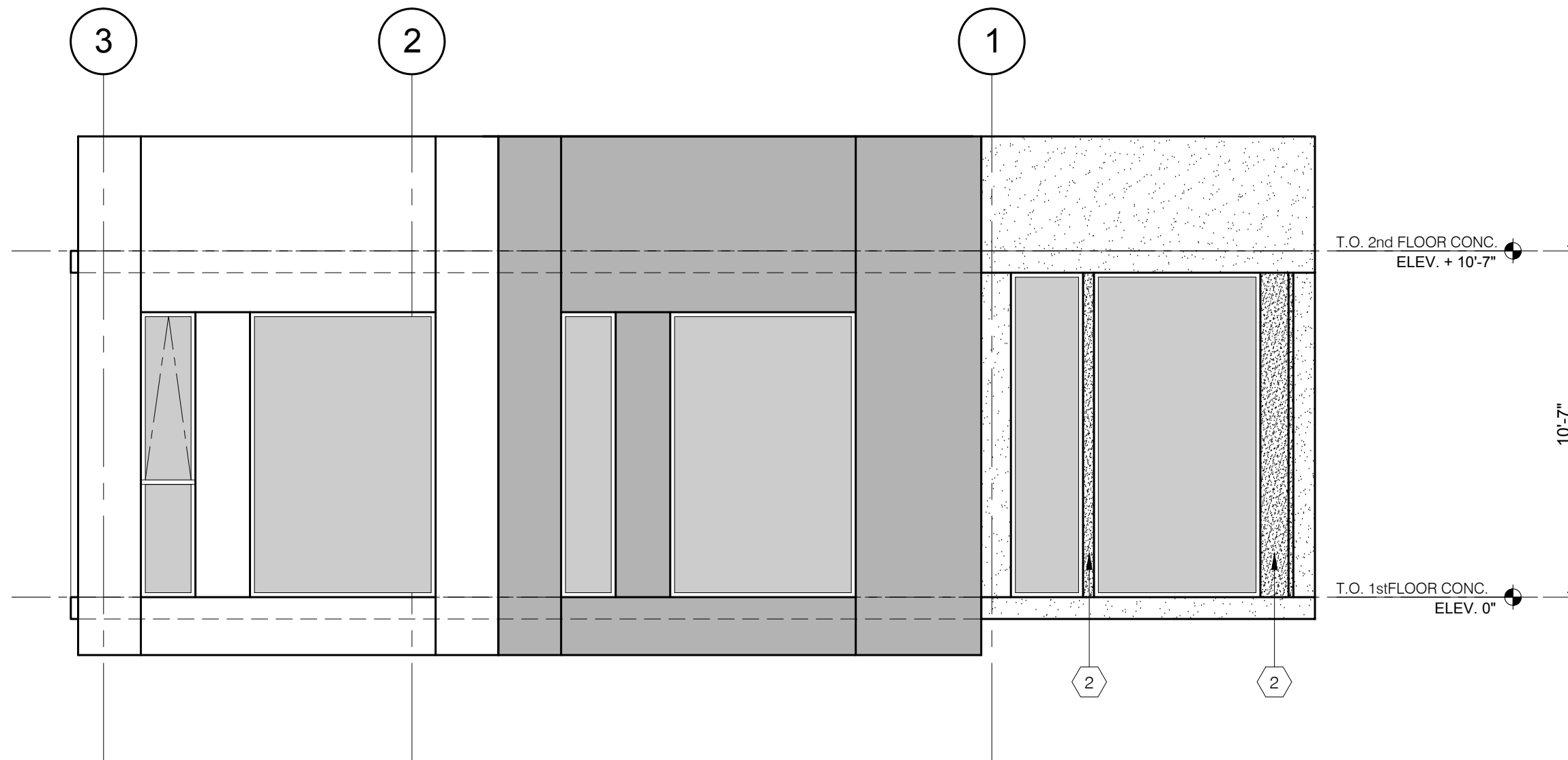
CEILING HEIGHT ABOVE FINISH FLOOR	8'-0" A.F.F.
SUSPENDED GYPSUM BOARD CEILING (USE W.R. GYP. BD. AT WET AREAS)	
EXPOSE STRUCTURE (ABOVE)	
EXTERIOR CEM. PLASTER - SMOOTH TROWEL FIN. DIRECT APPLIED OVER DENSGLASS BOARD	
REFER TO SPECS DETAILS FOR ACCESS HATCH TYPES	
EXHAUST AIR	
LINEAR DIFFUSER	

FINISHES LEGEND:

- EXPOSED CONCRETE
- EXTERIOR STUCCO
- GFRC PANEL WALL SYSTEM
- PRE-CAST CONCRETE FINS

KEYNOTES:

- GLASS GUARDRAIL
- PRE-CAST CONCRETE FIN
- WINDOW AND DOOR BEYOND



BUILDING ELEVATION

1

1/4" = 1'-0"

CONSULTANTS



howard laks architects

1545 twelfth street
santa monica, ca 90401

voice : 310-393-4455
fax : 310-393-2230

710 WILSHIRE BOULEVARD

SANTA MONICA - CALIFORNIA, 90401
MIXED-USE HOTEL PROJECT

BUILDING ELEVATION

SCALE: 1/4" = 1'-0"

A-201

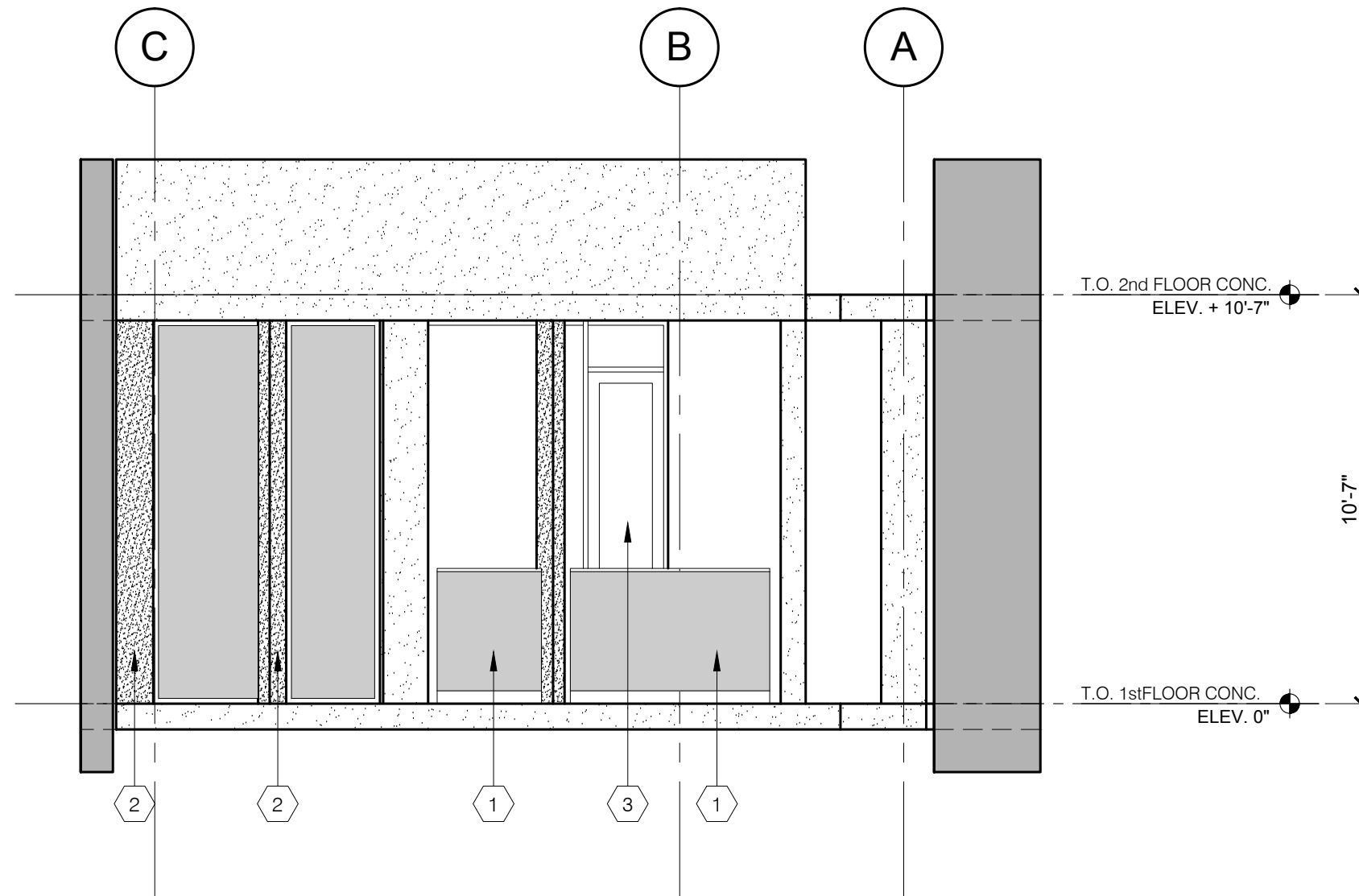
2016-11-30

FINISHES LEGEND:

- EXPOSED CONCRETE
- EXTERIOR STUCCO
- GFRC PANEL WALL SYSTEM
- PRE-CAST CONCRETE FINIS

KEYNOTES:

- 1 GLASS GUARDRAIL
- 2 PRE-CAST CONCRETE FIN
- 3 WINDOW AND DOOR BEYOND



BUILDING ELEVATION

2

1/4" = 1'-0"

CONSULTANTS



howard laks architects

1545 twelfth street
santa monica, ca 90401

voice : 310-393-4455
fax : 310-393-2230

710 WILSHIRE BOULEVARD

SANTA MONICA - CALIFORNIA, 90401
MIXED-USE HOTEL PROJECT

BUILDING ELEVATION

SCALE: 1/4" = 1'-0"

A-202

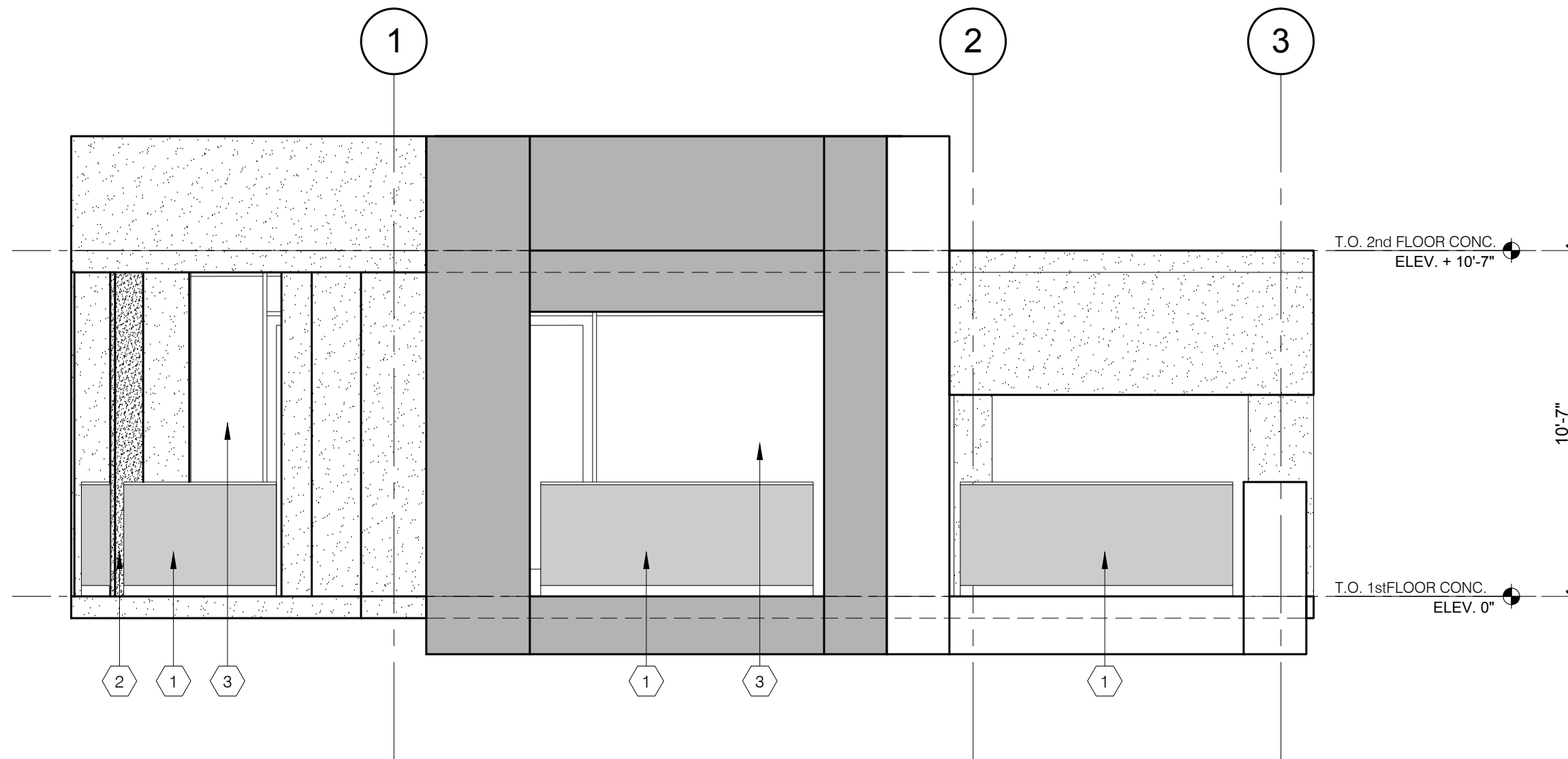
2016-11-30

FINISHES LEGEND:

- EXPOSED CONCRETE
- EXTERIOR STUCCO
- GFRC PANEL WALL SYSTEM
- PRE-CAST CONCRETE FINS

KEYNOTES:

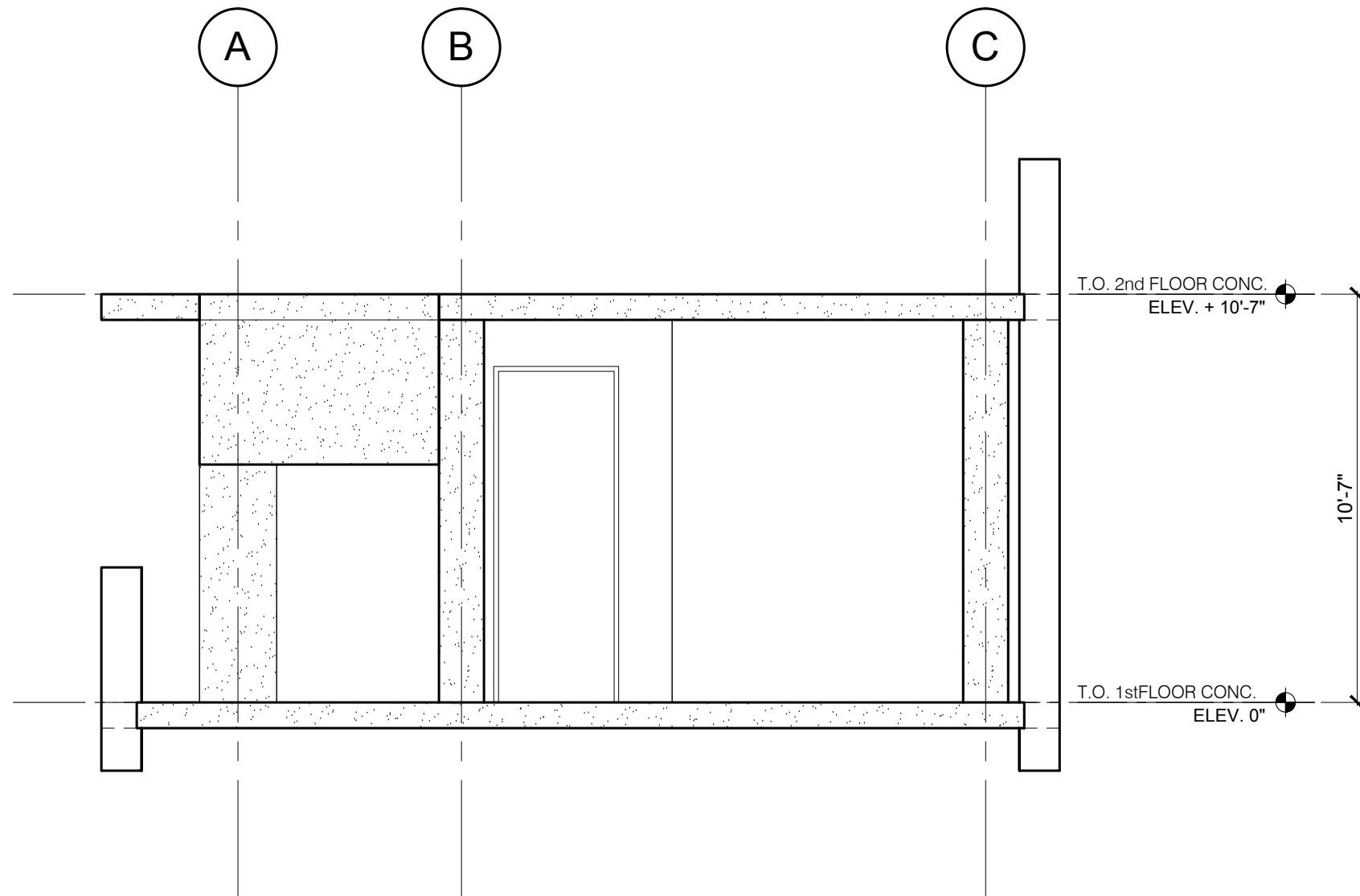
- GLASS GUARDRAIL
- PRE-CAST CONCRETE FIN
- WINDOW AND DOOR BEYOND



BUILDING ELEVATION

3

1/4" = 1'-0"



FINISHES LEGEND:

- EXPOSED CONCRETE
- EXTERIOR STUCCO
- GFRC PANEL WALL SYSTEM
- PRE-CAST CONCRETE FINS

KEYNOTES:

- GLASS GUARDRAIL
- PRE-CAST CONCRETE FIN
- WINDOW AND DOOR BEYOND

BUILDING ELEVATION

4

1/4" = 1'-0"

CONSULTANTS



howard laks architects

1545 twelfth street
santa monica, ca 90401

voice : 310-393-4455
fax : 310-393-2230

710 WILSHIRE BOULEVARD

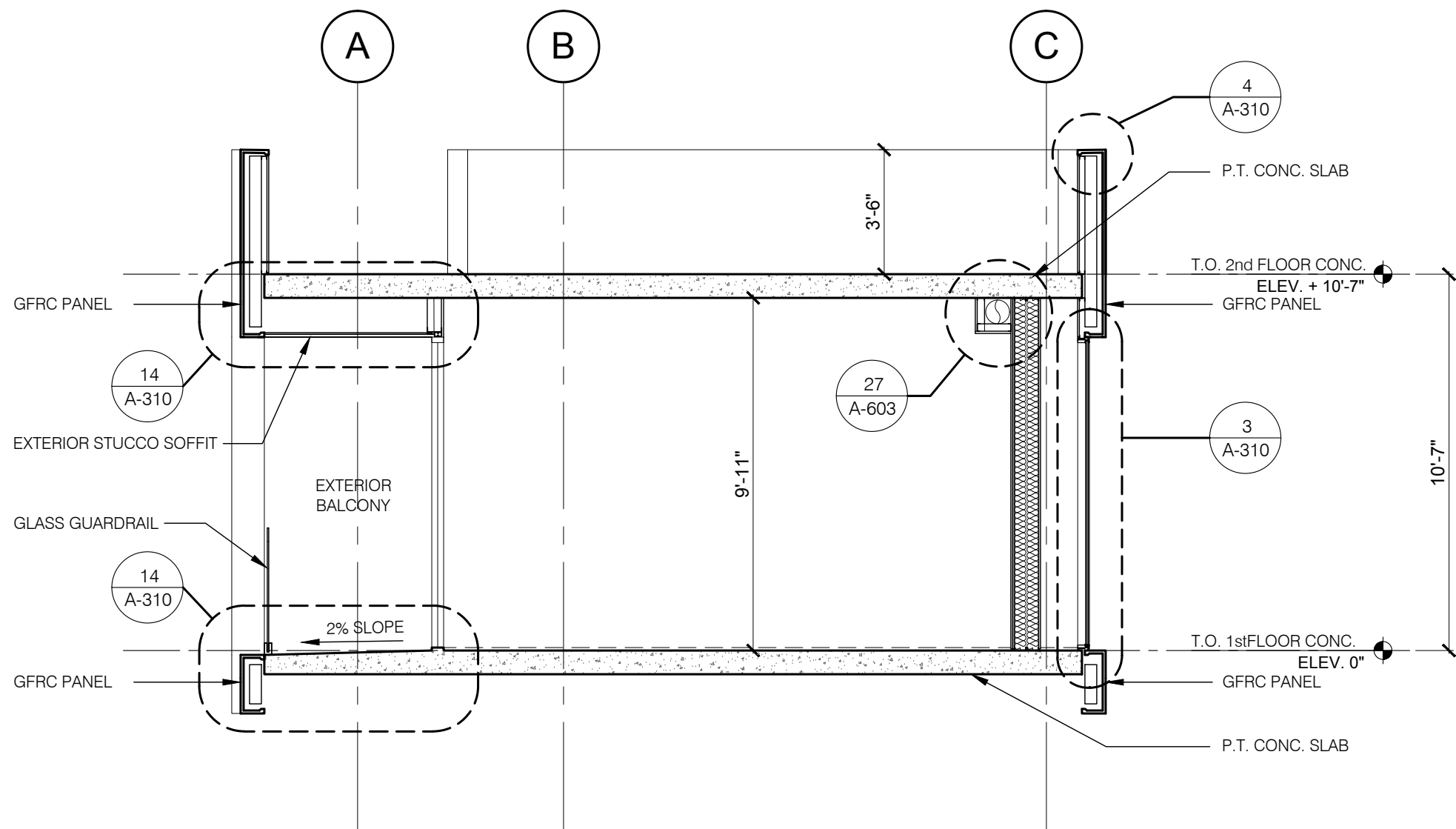
SANTA MONICA - CALIFORNIA, 90401
MIXED-USE HOTEL PROJECT

BUILDING ELEVATION

SCALE: 1/4" = 1'-0"

A-204

2016-11-30



BUILDING SECTION

1

1/4" = 1'-0"

CONSULTANTS



howard laks architects

1545 twelfth street
santa monica, ca 90401
voice : 310-393-4455
fax : 310-393-2230

710 WILSHIRE BOULEVARD

SANTA MONICA - CALIFORNIA, 90401
MIXED-USE HOTEL PROJECT

BUILDING SECTION

SCALE: 1/4" = 1'-0"

A-301

2016-11-30

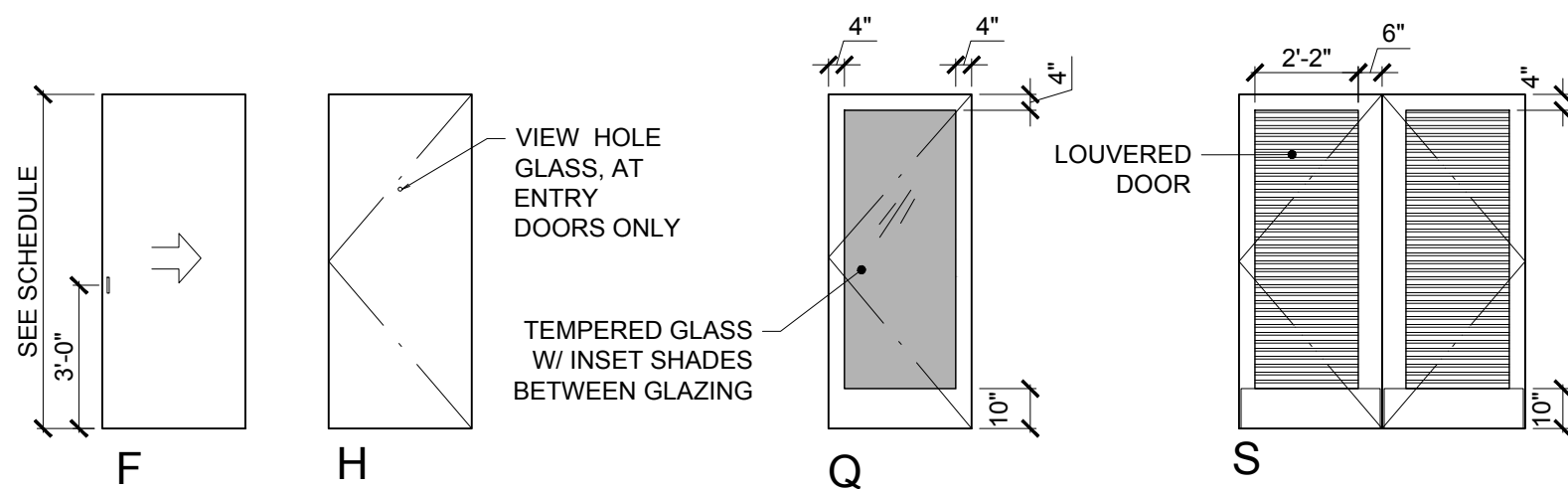
DOOR SCHEDULE - MOCK-UP

DOOR							FRAME MATERIAL				RATING	ROOM NAME	NOTES: All guest rooms doors to have floor mounted stops.
DOOR #	TYPE	SIZE	THK.	MATERIAL	FIN.	HDWR	MAT./FIN.	HEADER	JAMB	THRESHOLD			
001	H	3'-0"X7'-0"	1 3/4"			Set:56	HM	3/A-604	3/A-604	6/A-605	20 MIN	GUEST ROOM TYP ENTRY	SOLID CORE WITH CERUSED WHITE OAK VENEER - CLEAR MATTE FINISH
001A	F	3'-0"X7'-0"	1 3/4"			Set:57	WD	18/A-604	18/A-604	12/A-604		GUEST ROOM TOILET	
001B	S	4'-4 1/2"X7'-0"	1 3/4"			Set:59	HM	22/A-604	-	-		GUEST ROOM CLOSET	
001C	Q	3'-0"X9'-0"	-	GLASS		Set:14	ALUM.					GUEST ROOM BALCONY	
001D	Q	3'-0"X9'-0"		GLASS		Set:14	ALUM.					GUEST ROOM BALCONY	

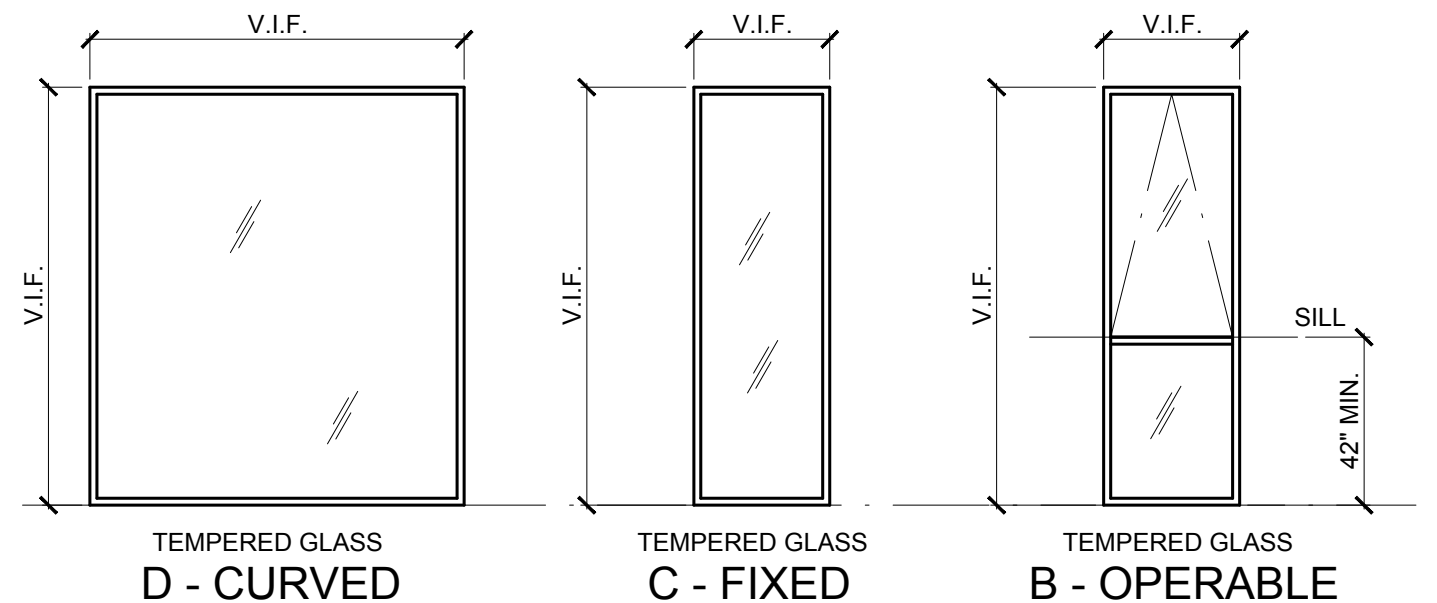
WINDOW SCHEDULE - MOCK-UP

WINDOWS & LOUVERED SCREENS										RATING	ROOM NAME	COMMENTS
NUMBER	TYPE	SIZE WIDTH/HEIGHT	STILE SIZE	MATERIAL	FIN.	HEADER/ JAMB	SILL	GLAZING	TEMPERED			
001-1	B	1'-8"X8'-8 1/2"		AL	CLR. ANODIZED	17/A-620	16/A-620	CLEAR	TEMPERED		GUEST ROOM	
001-2	C	5'-8"X8'-8 1/2"		AL	CLR. ANODIZED	8,12/A-310	11/A-310	CLEAR	TEMPERED		GUEST ROOM	
001-3	C	1'-8"X8'-8 1/2"		AL	CLR. ANODIZED	8,12/A-310	11/A-310	CLEAR	TEMPERED		GUEST ROOM	
001-4	C	5'-8"X8'-8 1/2"		AL	CLR. ANODIZED	8,12/A-310	11/A-310	CLEAR	TEMPERED		GUEST ROOM	
001-5	C	2'-2 1/2"X9'-10"		AL	CLR. ANODIZED	13,19/A-417	10/A-417	CLEAR	TEMPERED		GUEST ROOM	
001-6	D	5'-10 1/4"X9'-10"		AL	CLR. ANODIZED	13,19/A-417	10/A-417	CLEAR	TEMPERED		GUEST ROOM	
001-7	C	2'-4 1/4"X9'-10"		AL	CLR. ANODIZED	13,19/A-417	10/A-417	CLEAR	TEMPERED		GUEST ROOM	
001-8	D	4'-9 1/4"X9'-10"		AL	CLR. ANODIZED	10/A-417	10/A-417	CLEAR	TEMPERED		GUEST ROOM	
001-9	C	8'-3 1/2"X8'-8 1/2"		AL	CLR. ANODIZED	14/A-310	10/A-310	CLEAR	TEMPERED		GUEST ROOM	

DOOR TYPES



WINDOW TYPES



710 WILSHIRE BLVD. MOCK-UP

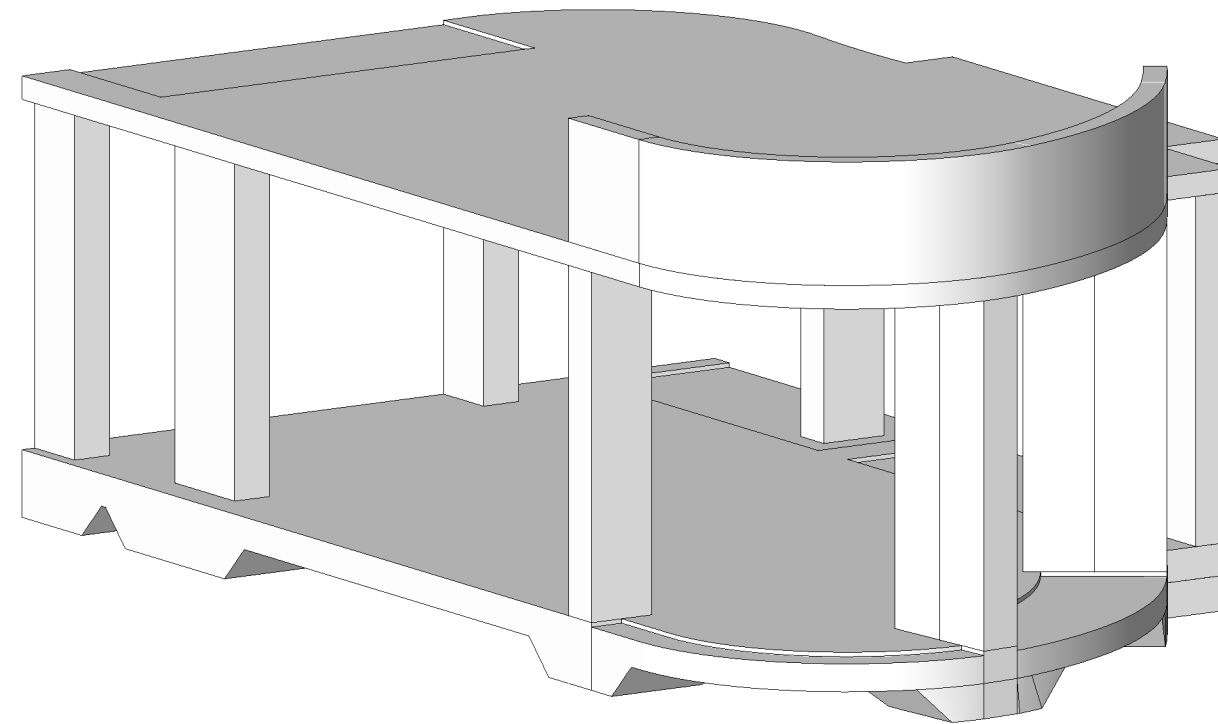
SANTA MONICA, CALIFORNIA 90401

MIXED-USE HOTEL PROJECT

NOTES:

FOR GENERAL NOTES SEE SHEET S-001 TO S-004

FOR TYPICAL DETAILS SEE SHEET S-011 TO S-022

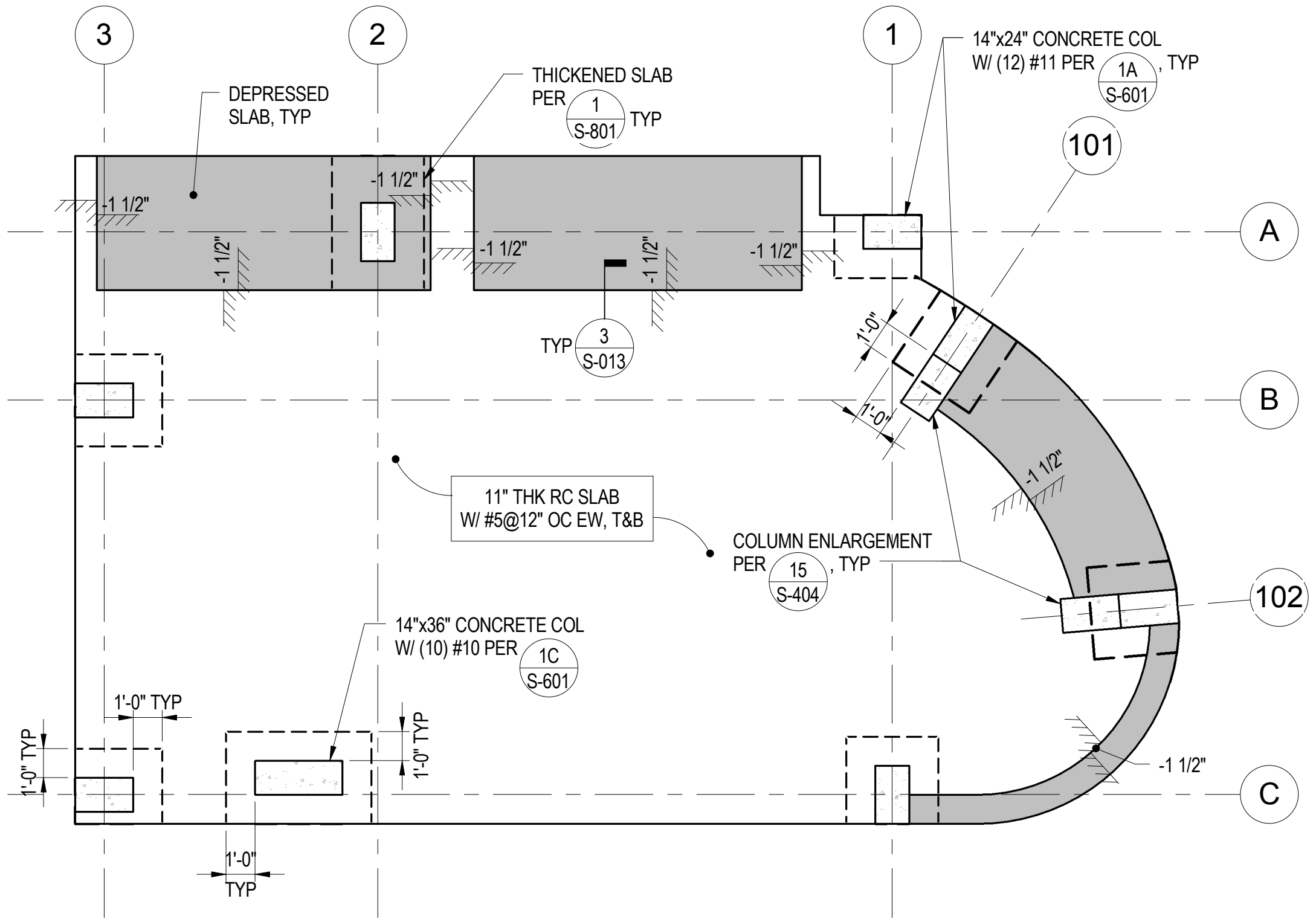


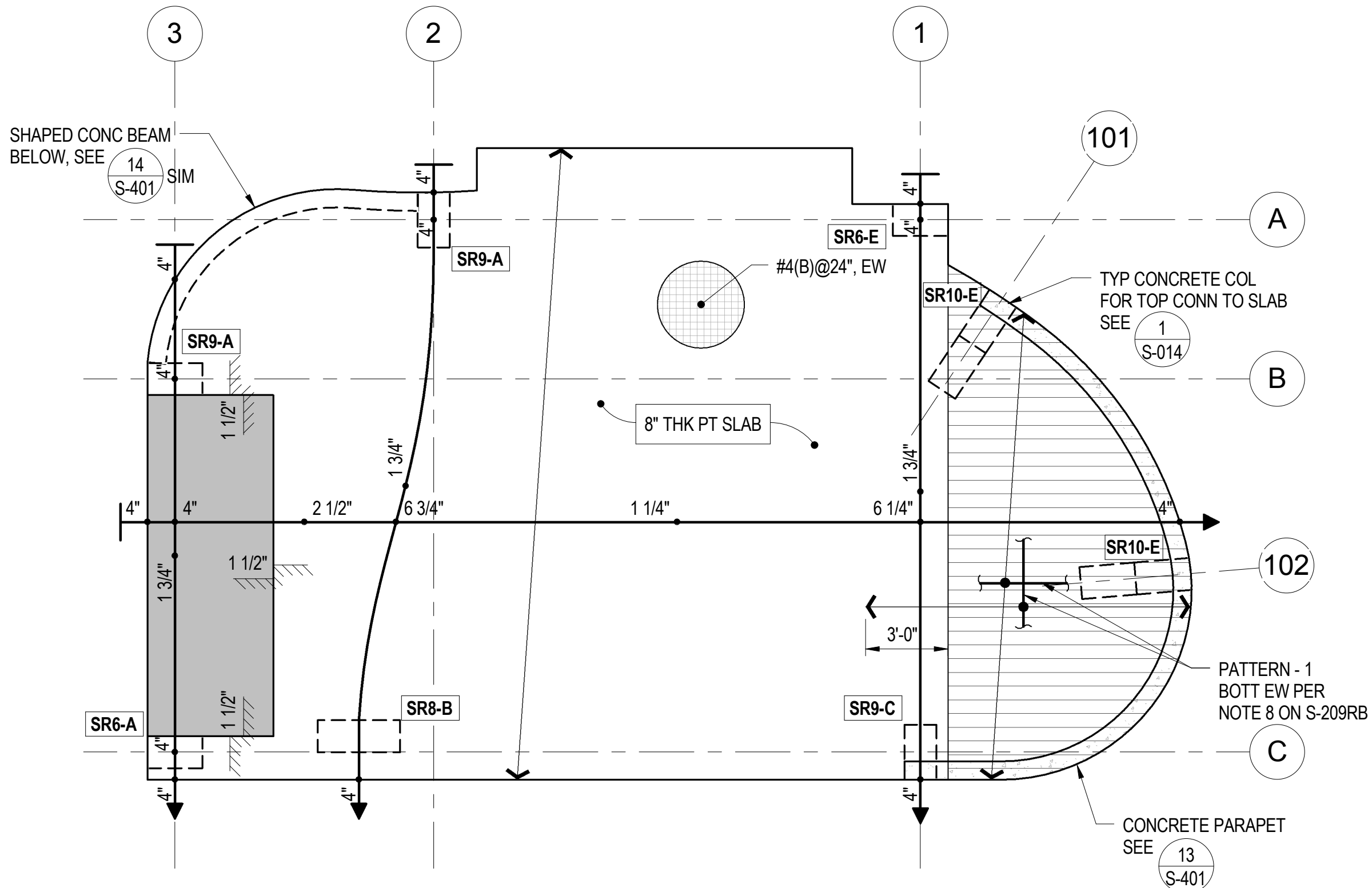
INDEX:

S-001	COVER SHEET
S-101	LEVEL 1 SLAB FOUNDATION PLAN
S-102	LEVEL 2 SLAB FRAMING AND BOTTOM REINFORCING PLAN
S-102RT	LEVEL 2 SLAB TOP REINFORCING PLAN
S-801	DETAILS
Grand total: 5	

REFER TO ADDENDUM 06:


S-001	GENERAL NOTES
S-002	GENERAL NOTES
S-003	GENERAL NOTES
S-004	GENERAL NOTES
S-011	TYPICAL DETAILS
S-012	TYPICAL DETAILS
S-013	TYPICAL DETAILS
S-014	TYPICAL DETAILS
S-015	TYPICAL DETAILS
S-016	TYPICAL DETAILS
S-017	TYPICAL DETAILS
S-021	TYPICAL DETAILS
S-022	TYPICAL DETAILS
S-401	CONCRETE SECTIONS AND DETAILS
S-404	CONCRETE DETAIL
S-601	CONCRETE COLUMN SCHEDULE





12/2/2016 6:16:01 PM


 155 N Lake Ave, 6th Floor
 Pasadena, CA 91101
 www.saifulbouquet.com
 (626) 304-2616
 Project #12602


howard laks architects
 1545 twelfth street
 santa monica, ca 90401
 voice : 310-393-4455
 fax : 310-393-2230

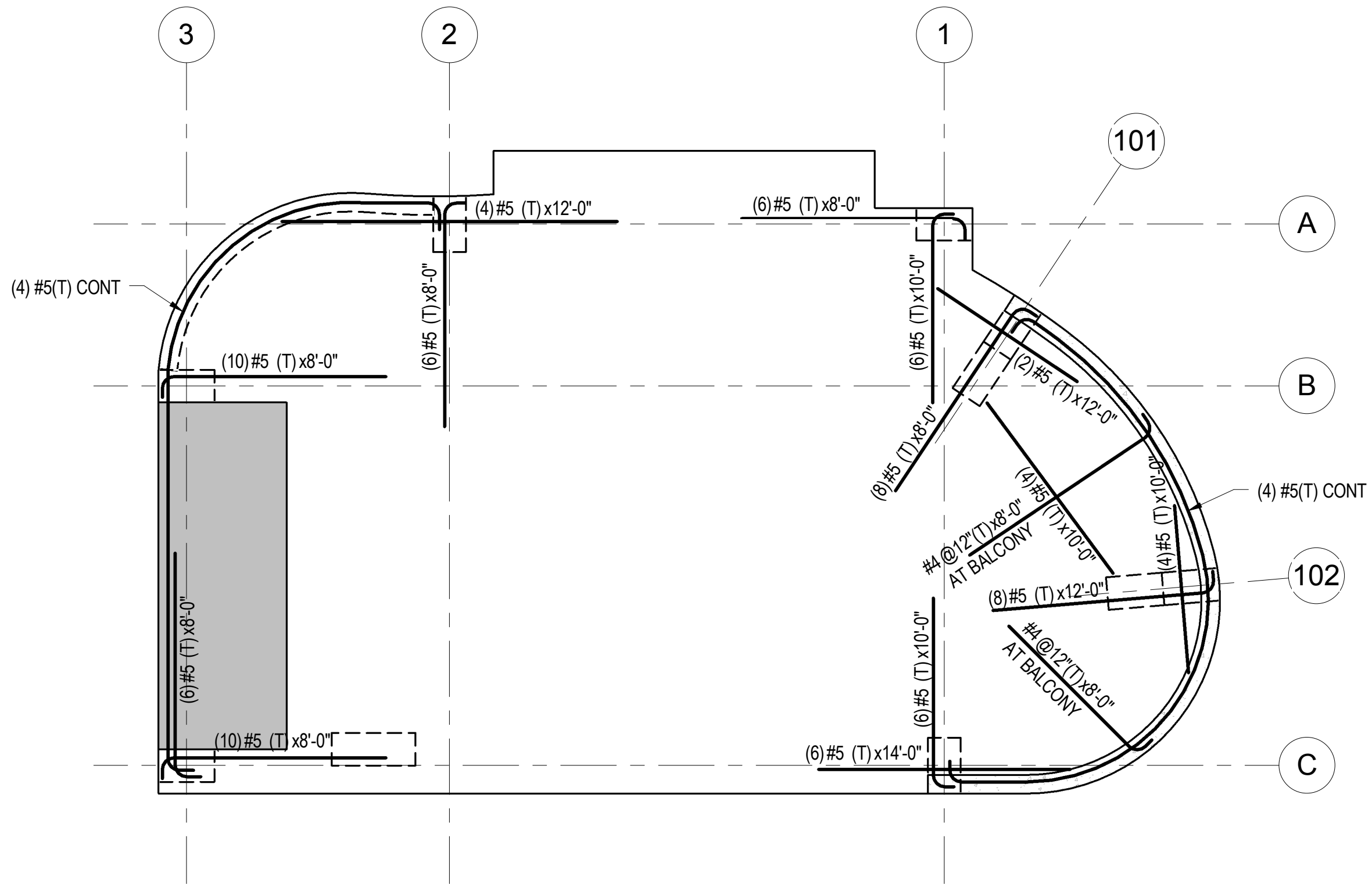
710 WILSHIRE BLVD
 SANTA MONICA - CALIFORNIA, 90401

LEVEL 2 SLAB FRAMING AND BOTTOM REINFORCING PLAN

SCALE 1/4" = 1'-0"

S-102
 12/02/2016

MBD-007.02



12/2/2016 6:16:02 PM

so
 saiful-bouquet
 structural engineers
 155 N Lake Ave, 6th Floor
 Pasadena, CA 91101
 www.saifulbouquet.com
 (626) 304-2616
 Project #12602

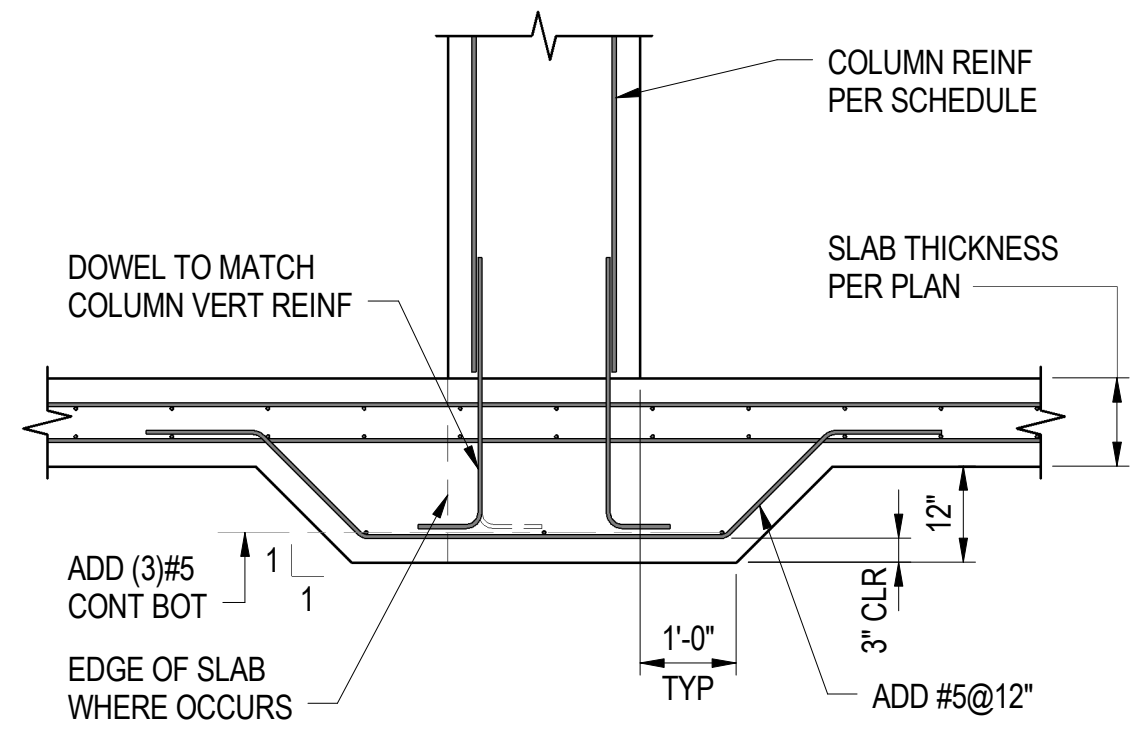
hla
 howard laks architects
 1545 twelfth street
 santa monica, ca 90401
 voice : 310-393-4455
 fax : 310-393-2230

710 WILSHIRE BLVD
 SANTA MONICA - CALIFORNIA, 90401

LEVEL 2 SLAB TOP REINFORCING PLAN
 SCALE 1/4" = 1'-0"

S-102RT
 12/02/2016

MBD-007.02



① DETAIL
1/2" = 1'-0"

12/2/2016 6:16:02 PM

CONSULTANTS
so
 saiful-bouquet
 structural engineers
 155 N Lake Ave, 6th Floor
 Pasadena, CA 91101
 www.saifulbouquet.com
 (626) 304-2616
 Project #12602

hla
 howard laks architects
 1545 twelfth street
 santa monica, ca 90401
 voice : 310-393-4455
 fax : 310-393-2230

710 WILSHIRE BLVD
 SANTA MONICA - CALIFORNIA, 90401

DETAILS
 SCALE 1/2" = 1'-0"

S-801
 12/02/2016