

ATLAS WALLSPEED FORM SYSTEM



ATLAS OFFERS OUR WALLSPEED SYSTEMS WEIGHING LESS THAN 10 LBS./SQ.FT. INCLUDING 3/4" PLYWOOD SKIN OR 12 LBS./SQ.FT. WITH DOUBLE 3/4" PLYWOOD WITH A PRESSURE ALLOWANCE OF UP TO 1800 PSF FOR THOSE APPLICATIONS WHERE RAPID CYCLING AND/OR ARCHITECTURAL SURFACE FINISHES ARE REQUIRED.

ATLAS WALLSPEED FORM SYSTEM

ATLAS OFFERS THIS WALLFORM SYSTEM WEIGHING LESS THAN 10 LBS./SQ.FT. INCLUDING 3/4" PLYWOOD SKIN OR 12 LBS./SQ.FT. WITH DOUBLE 3/4" PLYWOOD, WHICH UTILIZES ALUMINUM STRONGBACKS AND HIGH STRENGTH BOLTABLE ENGINEERED WOOD JOISTS IN 16', 12', 8' AND OTHER DEDICATED LENGTHS, AND IS OFFERED FOR APPLICATIONS WHERE RAPID CYCLING AND/OR ARCHITECTURAL SURFACE FINISHES ARE REQUIRED. THESE FORM COMPONENTS ARE TYPICALLY USED WITH A TIE PATTERN OF 4FT. X 4FT. CREATING A SYMMETRICAL PATTERN WITH PLYWOOD YIELDING FAVORABLE CONCRETE FINISHES, AND MAINTAINING A PRESSURE ALLOWANCE UP TO 1800 PSF. IN ADDITION TO ITS BOLTABLE WOOD JOIST AND ALUMINUM STRONGBACK WALLFORM SYSTEM, ATLAS OFFERS AN ALUMINUM JOIST WALLFORM SYSTEM FOR OTHER APPLICATIONS.

ATLAS PROVIDES A COMPLETE WALLFORM SYSTEM WHICH INCLUDES TIE EQUIPMENT, ALIGNMENT BRACES, CATWALK BRACKETS, LIFTING HARDWARE, AND MISCELLANEOUS ACCESSORIES REQUIRING THE CUSTOMER TO PROVIDE ONLY PLYWOOD AND INCIDENTAL TIMBER FOR CATWALKS AND BULKHEADS, ETC. THE ATLAS TIEPLATE ALLOWS STRONGBACK CHANNELS TO BE SET WITH A CLEAR SPACE OF 3-1/2" BETWEEN WEBS, ALLOWING MORE LATERAL TIE BOLT ADJUSTMENT THAN COMPARABLE SYSTEMS.

WALLSPEED® WALLFORM ATTRIBUTES:

- OFFSITE FABRICATION
- STRAIGHT OR RADIUSED
- TAPER-TIES OR THRU-TIES W/ SLEEVES AND CONES
- STRUCTURAL AND ARCHITECTURAL SIGNIFICANT APPLICATIONS
- SYMMETRICAL PATTERN OF PLYWOOD AND BOLT SPACING
- PRESSURE ALLOWANCE TO 1800 PSF.





8' X 25' FORMS FABRICATED OFFSITE AND SHIPPED READY FOR FINISHED PLACEMENT



BUNDLES OF BOLTABLE WALLSPEED BEAMS



WALLSPEED PANELS SIZED WITH RADIUS SHAPE

ATLAS WALLSPEED FORM



PROJECT: CATHEDRAL OF OUR LADY OF THE ANGELS, LOS ANGELES, CA

CONTRACTOR: MORLEY CONSTRUCTION

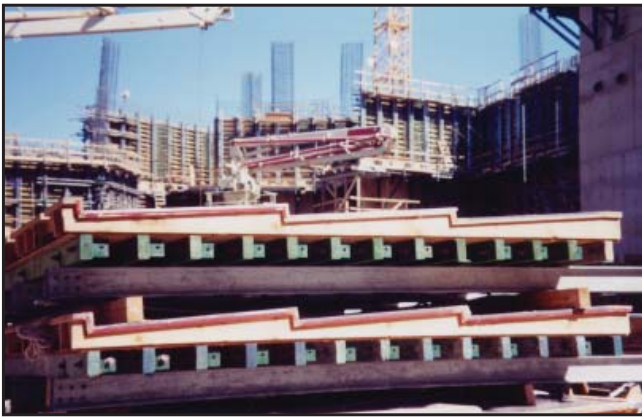
“OUR PROJECT DEMANDS:

- 500 YEAR DESIGN LIFE
- 500,000 SQ. FT. OF ARCHITECTURAL COLORED CONCRETE WALLS
- HUNDREDS OF VARIABLE CORNERS
- 1,800 LBS. / SQ. FT. FORM PRESSURE

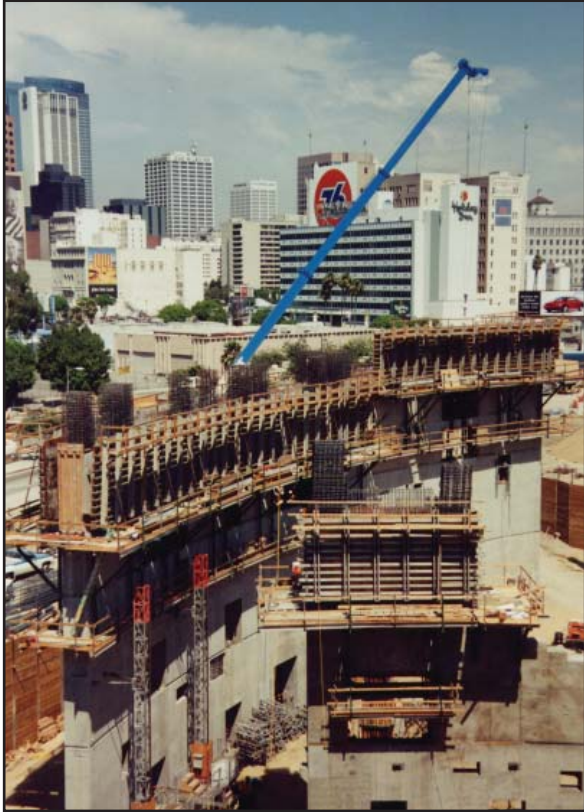
WE UTILIZED THE ATLAS WALLSPEED® & JUMP SYSTEM.

“THE FLEXIBILITY AND PERFORMANCE ACHIEVED FROM THE ATLAS WALLFORMS PROVIDED US WITH OUR ONLY EFFECTIVE FORM CHOICE.”

**-LARRY SEVILLA
PROJECT SUPERINTENDENT**



ATLAS WALLSPEED WALLFORM IN RADIUS CONFIGURATION



PROJECT: STAPLES CENTER, LOS ANGELES, CA

CONTRACTOR: PCL CONSTRUCTORS

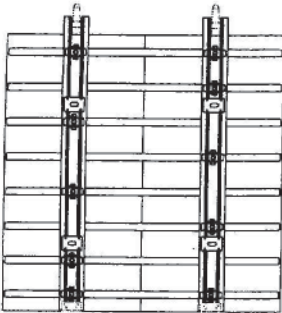
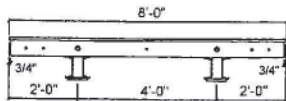
“AT STAPLES CENTER, WE PRODUCED OVER 300,000 SQ.FT. OF HIGH, CURVED, NON-REPETITIVE WALLS WITH THE ATLAS WALLSPEED® FORM AND ROLLBACK JUMP SYSTEM UNDER VERY DEMANDING SCHEDULE CONDITIONS. THIS SYSTEM HAS ENABLED US TO ACHIEVE EXCEPTIONAL SCHEDULE AND PRODUCTIVITY RESULTS ON SEVERAL DEMANDING PROJECTS. WE ARE ABLE TO ACCOMMODATE MANY DESIGN VARIATIONS AND HAVE RELIABLE COSTS.”

**-MARK JOSTEN
SENIOR PROJECT MANAGER**

“WE FOUND THIS WALLFORM SYSTEM TO BE VERY VERSATILE FOR BOTH STRAIGHT AND RADIUS WALLS. OUR CARPENTER CREWS WERE ABLE TO ACHIEVE GOOD OVERALL PRODUCTION COSTS, QUICK 3-DAY TURNAROUND CYCLES, AND PRODUCE A HIGH LEVEL FINISHED PRODUCT AS WELL.”

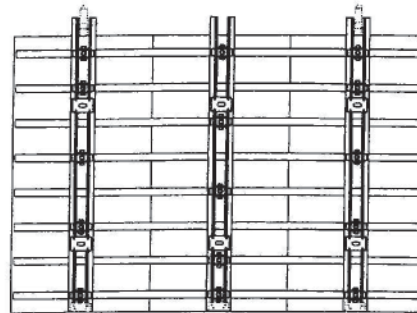
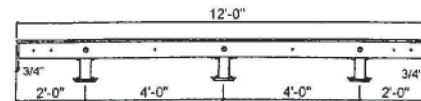
**-RICK GARCIA
PROJECT SUPERINTENDENT**





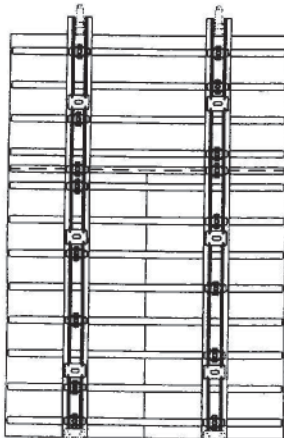
WEIGHT = 630 LBS.

| MATERIAL LIST | | |
|---------------|-----------------------|--------|
| QTY | DESCRIPTION | PART # |
| 2 | 4' X 8' PLYWOOD | |
| 8 | 8" WALL BEAM | C1008 |
| 4 | 8'-6" AL CHANNELS | A401 |
| 10 | YOKE BRACKET | C2021 |
| 4 | ATLAS TIE PLATE | D3010 |
| 2 | ATLAS STRONGBACK SHOE | D3020 |
| 20 | A-BOLTS | A955A |
| 2 | WALL LIFTING LUG | D3003 |



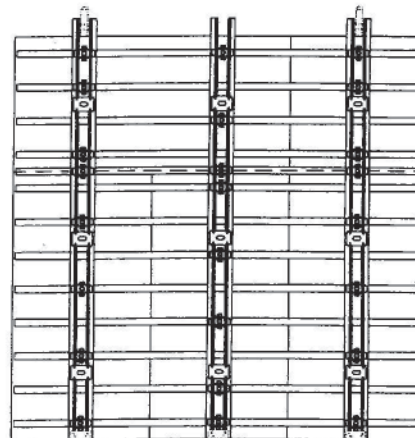
WEIGHT = 920 LBS.

| MATERIAL LIST | | |
|---------------|-----------------------|--------|
| QTY | DESCRIPTION | PART # |
| 3 | 4' X 8' PLYWOOD | |
| 8 | 12" WALL BEAM | C1012 |
| 6 | 8'-6" AL CHANNELS | A401 |
| 15 | YOKE BRACKET | C2021 |
| 6 | ATLAS TIE PLATE | D3010 |
| 3 | ATLAS STRONGBACK SHOE | D3020 |
| 30 | A-BOLTS | A955A |
| 2 | WALL LIFTING LUG | D3003 |



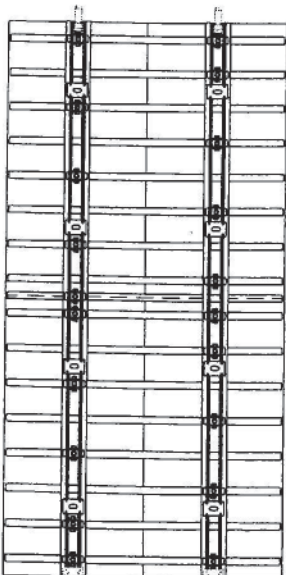
WEIGHT = 960 LBS.

| MATERIAL LIST | | |
|---------------|-----------------------|--------|
| QTY | DESCRIPTION | PART # |
| 3 | 4' X 8' PLYWOOD | |
| 13 | 8" WALL BEAM | C1008 |
| 4 | 12'-6" AL CHANNELS | A402 |
| 16 | YOKE BRACKET | C2021 |
| 6 | ATLAS TIE PLATE | D3010 |
| 2 | ATLAS STRONGBACK SHOE | D3020 |
| 28 | A-BOLTS | A955A |
| 2 | WALL LIFTING LUG | D3003 |



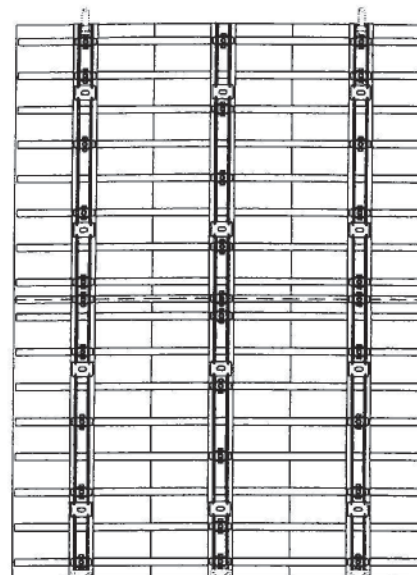
WEIGHT = 1400 LBS.

| MATERIAL LIST | | |
|---------------|-----------------------|--------|
| QTY | DESCRIPTION | PART # |
| 4-1/2 | 4' X 8' PLYWOOD | |
| 13 | 12" WALL BEAM | C1012 |
| 6 | 12'-6" AL CHANNELS | A402 |
| 24 | YOKE BRACKET | C2021 |
| 9 | ATLAS TIE PLATE | D3010 |
| 3 | ATLAS STRONGBACK SHOE | D3020 |
| 42 | A-BOLTS | A955A |
| 2 | WALL LIFTING LUG | D3003 |



WEIGHT = 1250 LBS.

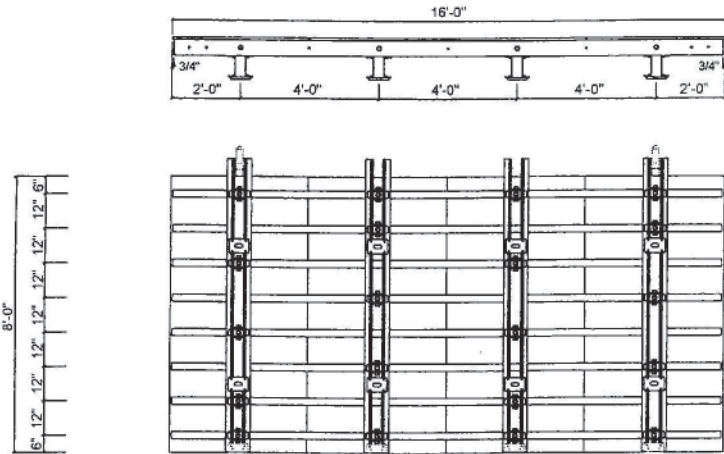
| MATERIAL LIST | | |
|---------------|-----------------------|--------|
| QTY | DESCRIPTION | PART # |
| 4 | 4' X 8' PLYWOOD | |
| 17 | 8" WALL BEAM | C1008 |
| 4 | 16'-0" AL CHANNELS | A403 |
| 20 | YOKE BRACKET | C2021 |
| 8 | ATLAS TIE PLATE | D3010 |
| 2 | ATLAS STRONGBACK SHOE | D3020 |
| 36 | A-BOLTS | A955A |
| 2 | WALL LIFTING LUG | D3003 |



WEIGHT = 1820 LBS.

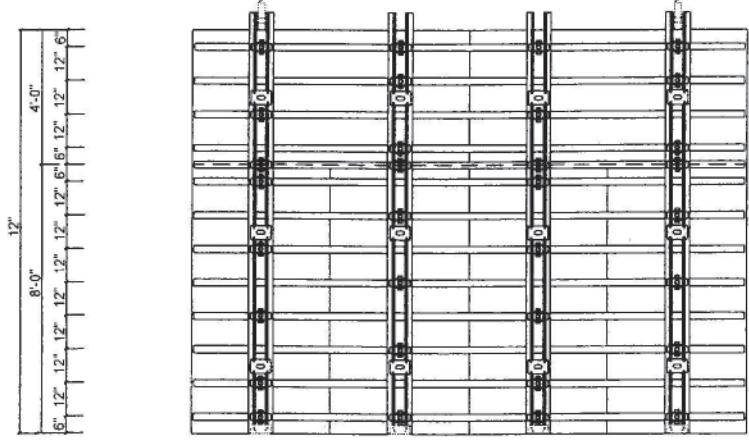
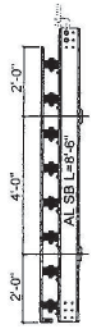
| MATERIAL LIST | | |
|---------------|-----------------------|--------|
| QTY | DESCRIPTION | PART # |
| 6 | 4' X 8' PLYWOOD | |
| 17 | 12" WALL BEAM | C1012 |
| 6 | 16'-0" AL CHANNELS | A403 |
| 30 | YOKE BRACKET | C2021 |
| 12 | ATLAS TIE PLATE | D3010 |
| 3 | ATLAS STRONGBACK SHOE | D3020 |
| 54 | A-BOLTS | A955A |
| 2 | WALL LIFTING LUG | D3003 |

FEED FORM SYSTEM



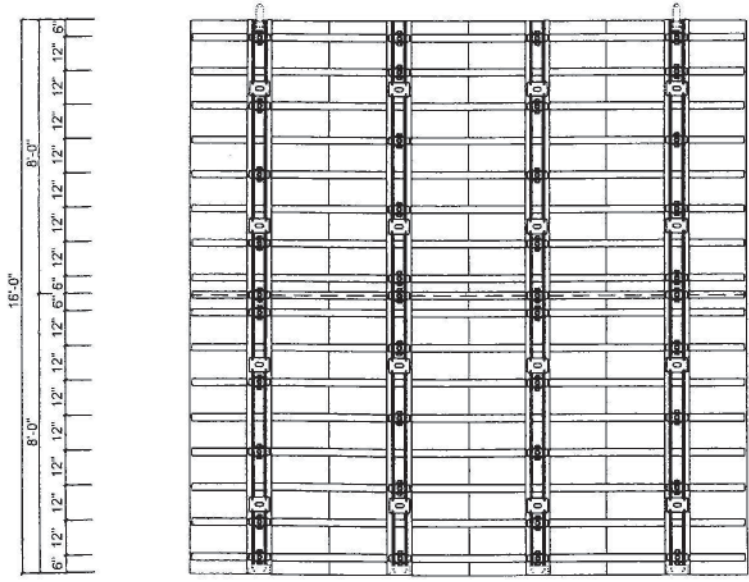
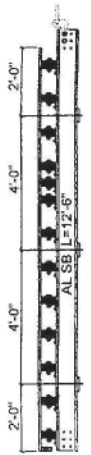
WEIGHT = 1200 LBS.

| MATERIAL LIST | | |
|---------------|-----------------------|--------|
| QTY. | DESCRIPTION | PART # |
| 4 | 4' X 8' PLYWOOD | |
| 8 | 16' WALL BEAM | C1018 |
| 8 | 8'-6" AL CHANNELS | A401 |
| 20 | YOKE BRACKET + | C2021 |
| 6 | ATLAS TIE PLATE | D3010 |
| 4 | ATLAS STRONGBACK SHOE | D3020 |
| 40 | A-BOLTS | A955A |
| 2 | WALL LIFTING LUG | D3003 |



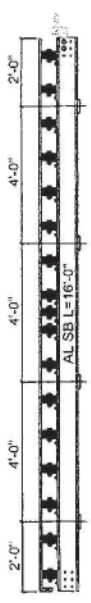
WEIGHT = 1840 LBS.

| MATERIAL LIST | | |
|---------------|-----------------------|--------|
| QTY. | DESCRIPTION | PART # |
| 6 | 4' X 8' PLYWOOD | |
| 13 | 16' WALL BEAM | C1016 |
| 8 | 12'-6" AL CHANNELS | A402 |
| 32 | YOKE BRACKET | C2021 |
| 12 | ATLAS TIE PLATE | D3010 |
| 4 | ATLAS STRONGBACK SHOE | D3020 |
| 56 | A-BOLTS | A955A |
| 2 | WALL LIFTING LUG | D3003 |

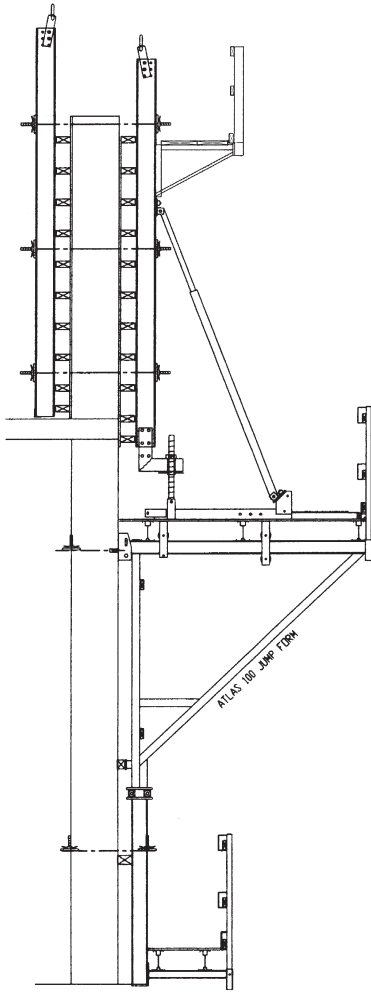


WEIGHT = 2380 LBS.

| MATERIAL LIST | | |
|---------------|-----------------------|--------|
| QTY. | DESCRIPTION | PART # |
| 8 | 4' X 8' PLYWOOD | |
| 17 | 16' WALL BEAM | C1016 |
| 8 | 16'-0" AL CHANNELS | A403 |
| 40 | YOKE BRACKET | C2021 |
| 16 | ATLAS TIE PLATE | D3010 |
| 4 | ATLAS STRONGBACK SHOE | D3020 |
| 72 | A-BOLTS | A955A |
| 2 | WALL LIFTING LUG | D3003 |



ATLAS JUMPFORM SYSTEM



THE ATLAS ROLLBACK AND JUMP SYSTEM, SUSPENDED FROM JUMP-SHOES BOLTED TO THE PREVIOUS CONCRETE LIFT, ALLOWS STRIPPING, REWORKING, AND PREPARATION OF THE FORMS TO PROCEED PRIOR TO CRANE ASSISTANCE. THIS IS ACHIEVED BY MEANS OF A RETRACTING CARRIAGE ON WHICH THE FORM IS MOUNTED. THE CARRIAGE ALLOWS APPROXIMATELY 30" OF RETRACTIONS FROM THE PREVIOUSLY CAST FACE, GIVING ADEQUATE WORKING CLEARANCE "INSIDE" THE FORM.

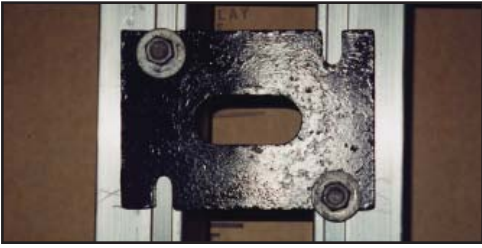
WITH ALL THIS ACTIVITY BEING POSSIBLE AT THE WORKING LEVEL, THE FORM NEVER NEEDS TO BE BROUGHT TO GROUND LEVEL OR STORED ELSEWHERE WHILE DECKING ACTIVITY IS PROCEEDING. WITH THIS SYSTEM, IT IS NO LONGER NECESSARY FOR UNACCEPTABLY LENGTHY CRANE-INTENSIVE HOISTING OPERATIONS TO TAKE PLACE. NEITHER IS IT NECESSARY FOR WORKERS TO "RIDE" THE FORMS DURING RE-SETTING, AS THE GANG/PLATFORM UNIT IS HOISTED AS ONE AND LANDED INTO PREVIOUSLY MOUNTED JUMP SHOES. HOISTING TIME IS EXTREMELY BRIEF.

AN ADDITIONAL FEATURE OF THE SYSTEM IS THE TRAILING PLATFORM WHICH IS CONNECTED TO THE A100 FRAME AS THE SYSTEM CLIMBS ITS WAY UP THE STRUCTURE. THIS TRAILING PLATFORM SERVES SEVERAL FUNCTIONS, NAMELY:

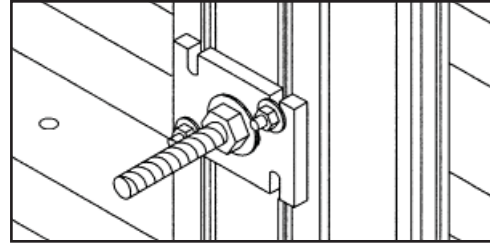
- ALLOWS CONVENIENT JUMP-SHOE REMOVAL AS CONSTRUCTION PROCEEDS.
- ALLOWS ACCESS TO THE SAFETY TIE-BACK.
- ALLOWS SACKING AND PATCHING TO BE ACCOMMODATED FROM THIS TRAILING PLATFORM.



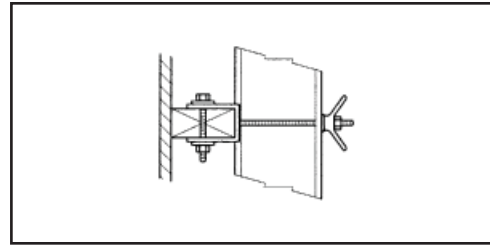
ATLAS WALLSPEED FORM COMPONENTS



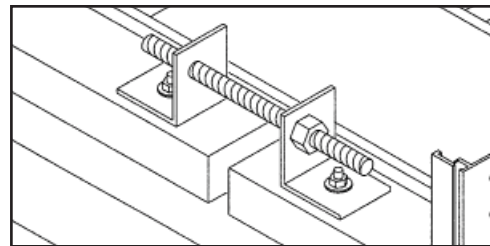
TIE PLATE



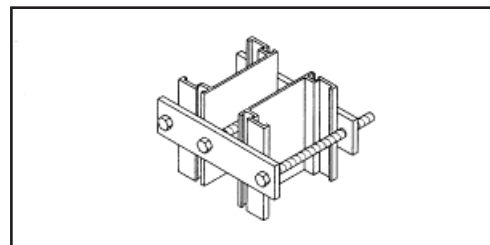
YOKE
BRACKET



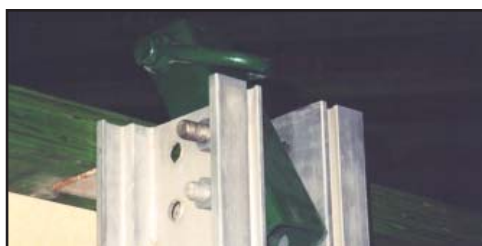
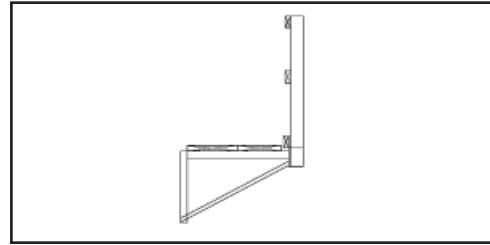
ANGLE
BRACKET



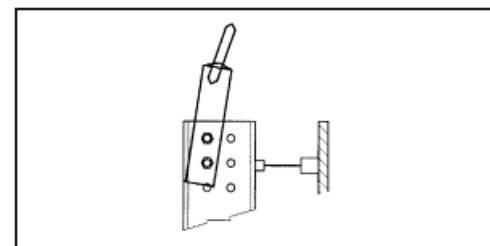
3-HOLE
BRACE PLATE



SCAFFOLDING



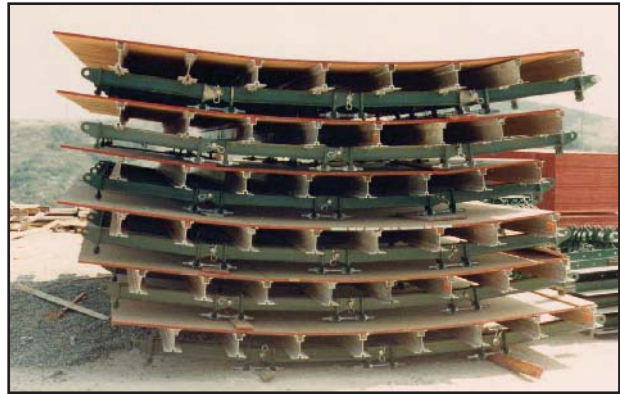
LIFTING LUG



WALLFORM APPLICATIONS



WALLFORM APPLICATIONS





CORPORATE OFFICE

**4640 BRINELL ST.
SAN DIEGO, CA 92111
PHONE (858) 277-2100
TOLL FREE 1-877-588-2100
FAX (858) 277-0585**



**LOS ANGELES
(714) 441-9500
FAX (714) 441-9519**

**LAS VEGAS
(702) 227-6800
FAX (702) 222-0488**

**PHOENIX
(602) 256-0600
FAX (602) 256-0687**

**DENVER
(303) 298-7777
FAX (303) 298-7778**

**SAN FRANCISCO
(510) 353-0100
FAX (510) 353-0142**

**MEXICO
001 (877) 586-2100
FAX 001(858) 277-0585**