

275 W. Hospitality Lane, Suite #100 Phone: 909-890-3700  
San Bernardino, CA 92408 Fax: 909-890-3770  
Email: cast@designwesteng.com

ISSUE DATE:


DATE BY ISSUE FOR

REVISION:

1			
2			
3			
4			
5			
6			

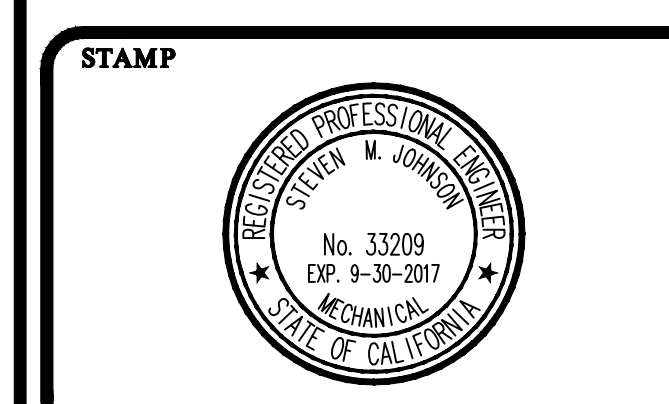
NUM. DATE BY REVISION FOR

CONSULTANT



PROJECT TITLE

PROJECT FOR:  
**CALIFORNIA BAPTIST UNIVERSITY**  
3532 MONROE STREET  
RIVERSIDE, CA 92504



SHEET TITLE  
**DEMO & REMODEL PLUMBING FLOOR PLANS**

DESIGNED BY	DZ	SHEET NO.	
DRAWN BY	AC		
CHECKED BY	DZ		
DATE	07-01-16		
SCALE			
JOB NO.	16-104		

GENERAL NOTES

1. PIPE MATERIAL TO BE PVC, OR TO MATCH EXISTING.

CONSTRUCTION NOTES

- TANK WATER LEVEL TO BE 2'-6" MINIMUM FROM FLOOR TO ENSURE PUMP SUCTION LINE IS LOWER THAN TANK WATER LEVEL. BOTTOM OF TANK TO BE 36" BELOW FINISHED FLOOR.
- RE-CONNECT NEW PIPING TO EXISTING. FIELD VERIFY FOR EXACT SIZE AND LOCATION.
- ROUTE TO WASTE.
- F-2 TO BE MINIMUM 8" ABOVE FINISHED FLOOR FOR FILTER ELEMENT REPLACEMENT.
- VERIFY PIPE CONNECTION ON SITE.

PUMP SCHEDULE

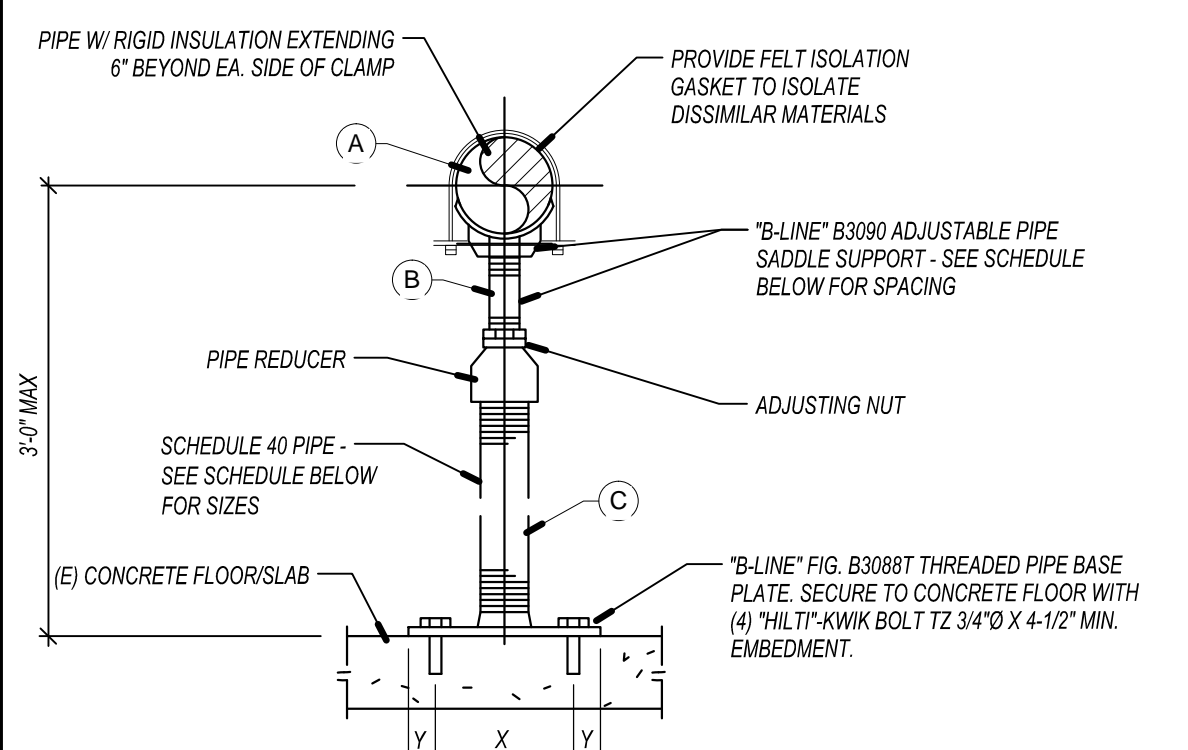
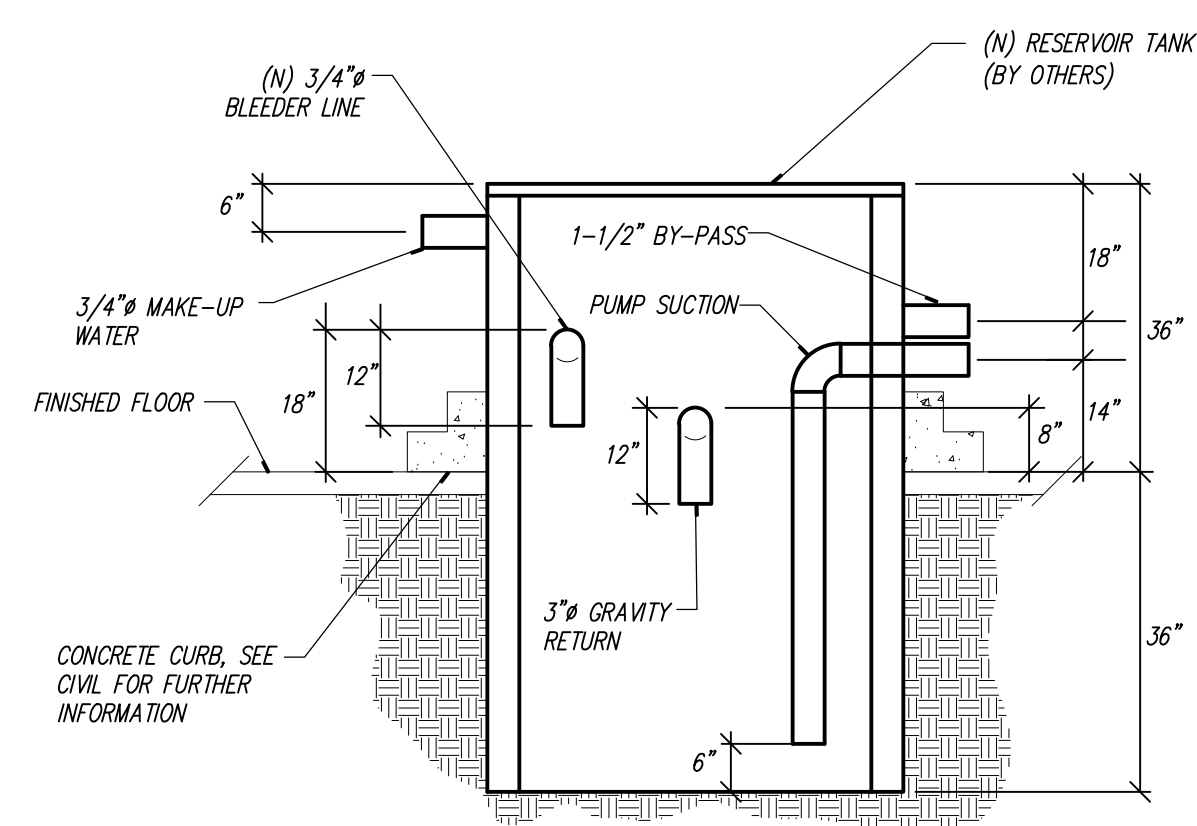
**P 1**  
MFR. & MODEL NO.: STA-RITE - JH03  
CAPACITY: 23 GPM @ 37.5 PSI  
CONSTRUCTION: CAST IRON, IMPELLER: J SERIES - NORLY  
MOTOR: 2 HP  
ELECTRICAL: 230/208-3Φ-60Hz  
WEIGHT: 69 LBS.

FILTER SCHEDULE

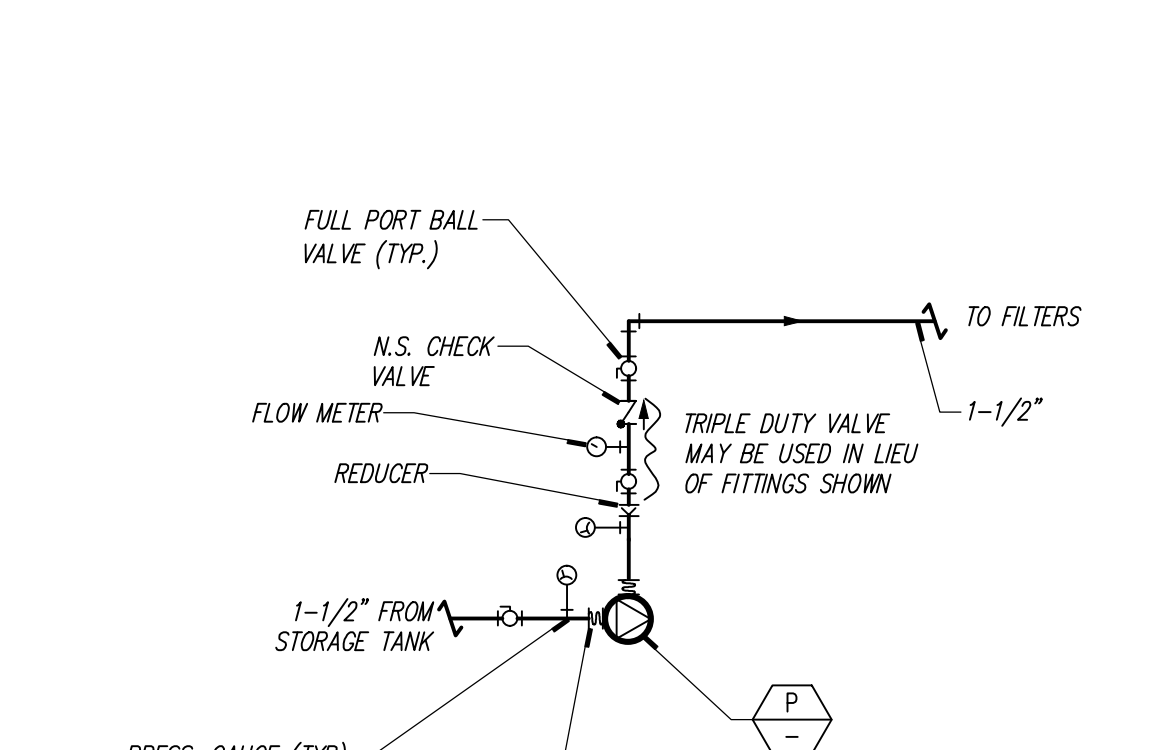
**F 1**  
MFR. & MODEL NO.: STA-RITE - PKCRP100  
FILTER AREA: 100 SQ. FT.  
MAX FLOW RATE: 38 GPM  
CAPACITY: 23 GPM @ 0.3 PSI PD  
WEIGHT: 33 LBS.

**F 2**  
MFR. & MODEL NO.: GRUNBECK - GENO BACKWASH FILTER, TYPE MX 1-1/2"  
CAPACITY: 23 GPM @ 5.0 PSI PD  
WEIGHT: 22 LBS.

SECTION AA

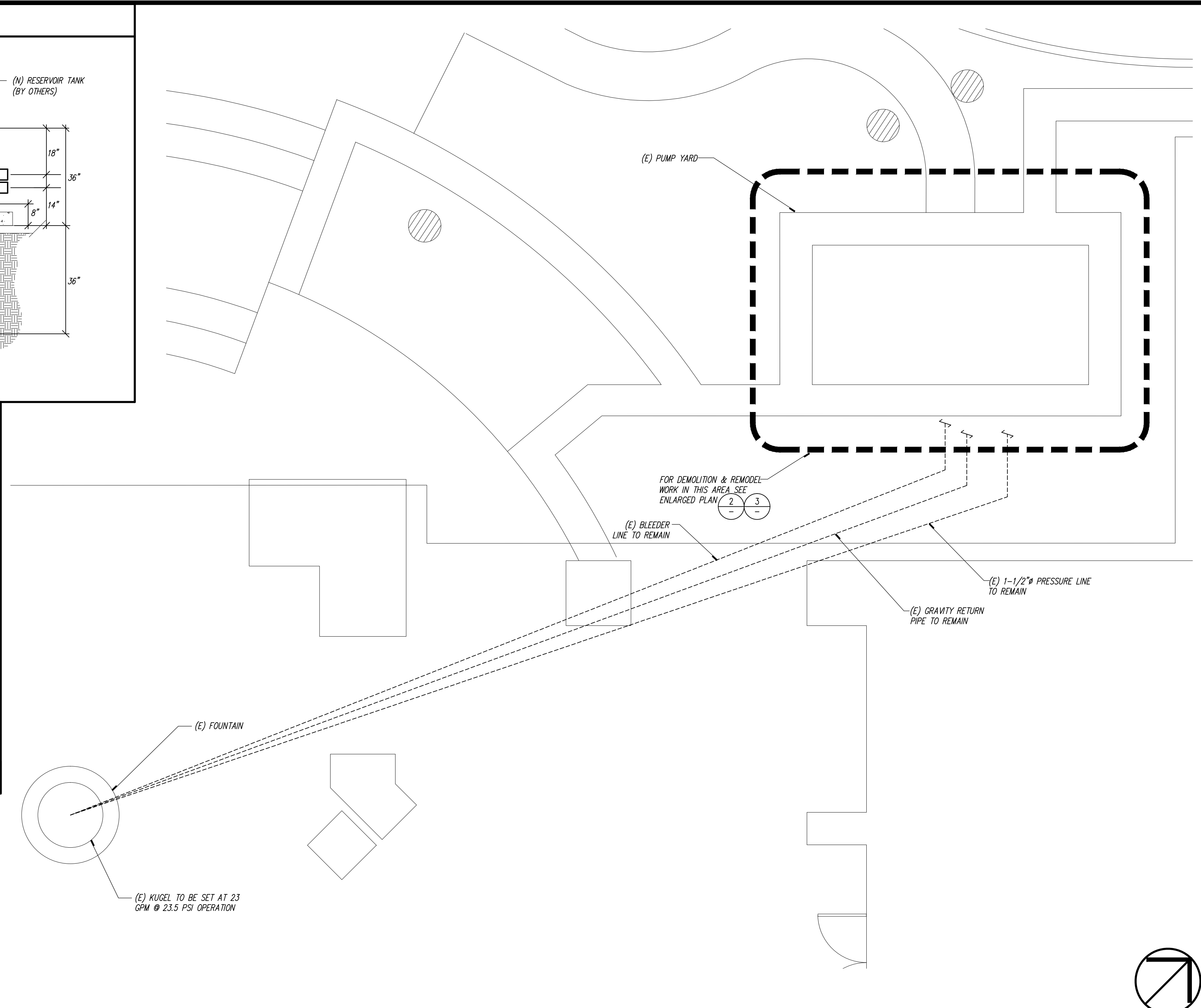


SUPPORT SCHEDULE						
PIPE SIZE (A)	MAX. LOAD PER SUPPORT	MAX. SPACING PER SUPPORT	SHANK SIZE (B)	SUPPORT (C)	BASE PLATE	
2 1/2\"/>						



FILTER/PIPE SUPPORT DETAIL 5

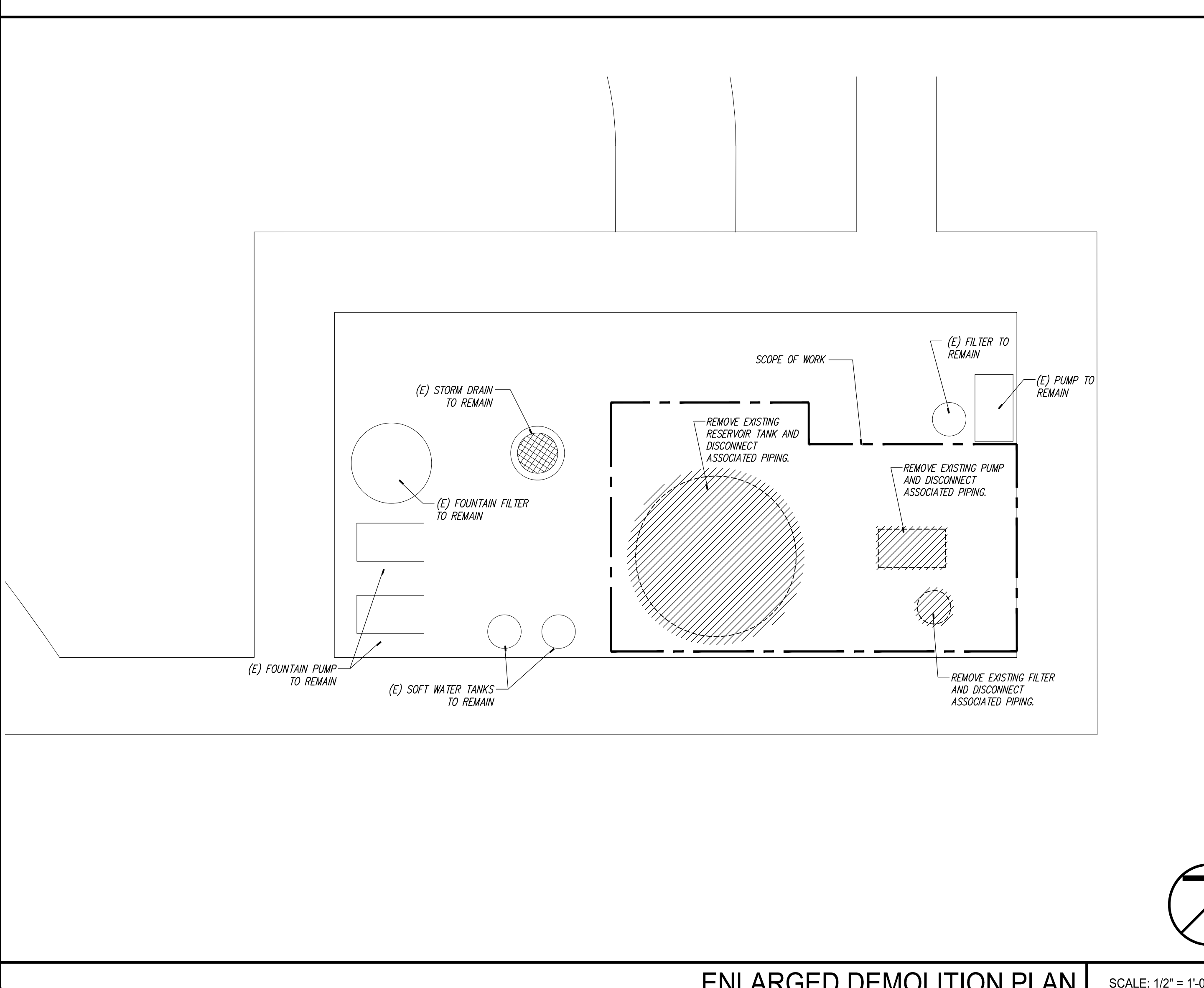
PUMP PIPING DIAGRAM 4



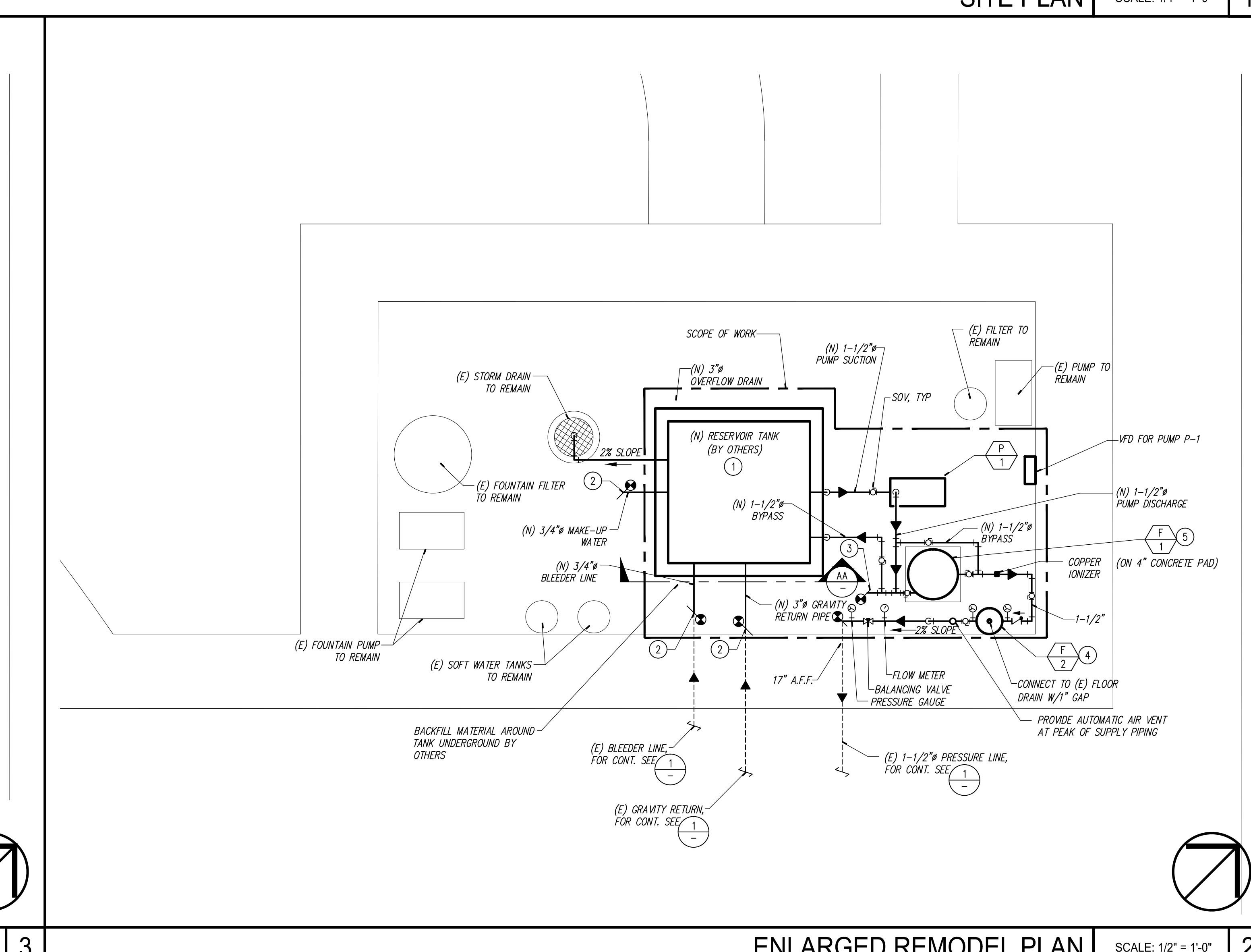
ENLARGED DEMOLITION PLAN 3

ENLARGED REMODEL PLAN 2

SITE PLAN SCALE: 1/4" = 1'-0" 1



ENLARGED DEMOLITION PLAN SCALE: 1/2" = 1'-0" 3



ENLARGED REMODEL PLAN SCALE: 1/2" = 1'-0" 2