

QUOTATION



CONTRACTOR: SUNDT CONSTRUCTION DATE:
ATTENTION:
PROJECT:

QUANTITY		PRICE
135 PC	STARRFOAM TYPE XIV 2.5/PCF - 12"X4'X8'	\$196.50/PC

(40 PSI)

*QUOTE BASED ON QUANTITY QUOTE - IF CHANGES MATERIAL
& FREIGHT WILL HAVE TO BE RE-QUOTED

*SALES TAX NOT INCLUDED

*PRICE IS LANDED AT JOBSITE IN PHOENIX (JUST OVER ONE
T/L OF MATERIAL)

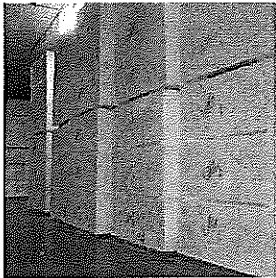
QUOTE EXPIRES:

AVAILABILITY: 2-3 WEEKS

FOB: SEE ABOVE

StarRfoam XIV

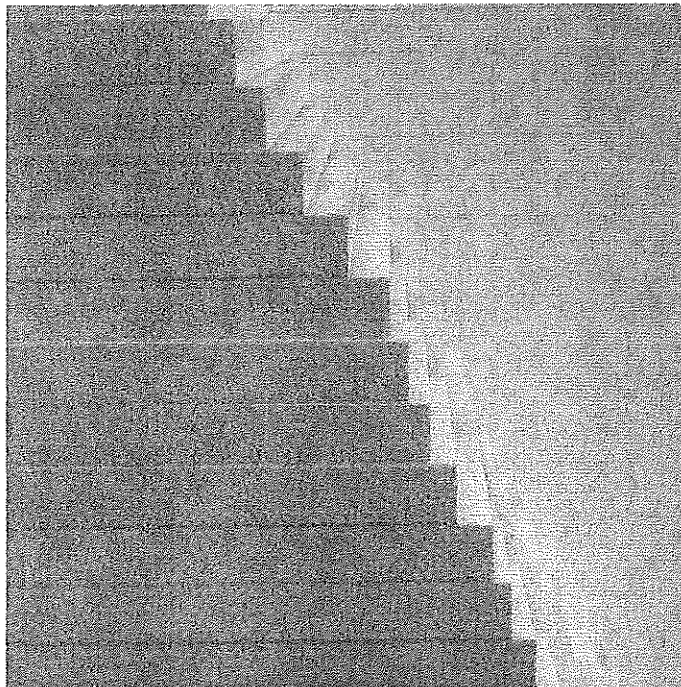
Expanded Polystyrene (EPS)



StarRfoam is high-quality expanded polystyrene (EPS)

DESCRIPTION

Starfoam XIV is a lightweight, closed cell, rigid insulation, manufactured from expanded polystyrene (EPS). StarRfoam EPS meets or exceeds ASTM C578, Type XIV, Standard Specification for Rigid, Cellular Polystyrene Thermal Insulation.



APPLICATION

- Commercial roofing insulation
- Exterior insulation finishing systems (EIFS)
- Below grade insulation
- Metal roof & metal deck flute-fill
- GeoFoam
- Cavity Walls
- Tilt-up concrete insulation
- Underslab insulation
- Split slab insulation
- Custom computer cut shapes
- Docks and piers
- Pre-cast concrete panels
- Interior wall insulation
- Ramps and bridge approaches
- Packaging
- Sheathing
- Void fill
- Road base
- Retaining walls

BENEFITS

- Stable R-Value
- Proven performance
- Environmentally friendly
- Moisture resistant
- Energy efficient
- Cost-effective
- Code approvals
- No CFC, HCFC, HFC, or formaldehyde
- Termite protection available

OPTIONS

Available sizes:

- 4'x4' panels (1/4" to 48" thick)
- 4'x8' panels (1/4" to 48" thick)

Contact your local sales representative for custom shapes and sizes.

***** PLANT LOCATIONS *****

ARLINGTON

3220 EAST AVENUE F
ARLINGTON, TX 76011

800-722-6218

ANTHONY

1004 OMAR ROAD
ANTHONY, TX 79821

915-886-4636

KINGMAN

4445 OLYMPIC WAY
KINGMAN, AZ 86401

928-681-2800

PHOENIX

2465 S 19TH AVE. BLDG F
PHOENIX, AZ 85009

602-253-4770





StarRfoam XIV

Expanded Polystyrene (EPS)

Physical & Thermal Properties

PROPERTIES	TYPE XIV	TEST METHOD
Nominal Density (pcf)	2.50	ASTM C303
Thermal Resistance (R-Value)		ASTM
(per inch) at @25°F,	5.05	C518 or
(per inch) at @40°F,	4.85	C177
(per inch) at @75°F,	4.50	
Water Vapor Permeability (perms)	2.5	ASTM E96
Water Absorption (max. % volume)	2.0	ASTM C272
Oxygen Index, Min.	24%	ASTM D 2863

Strength Properties

PROPERTIES	TYPE XIV	TEST METHOD
Compressive Strength @10% deformation, min.	40.0	ASTM D1621
Flexural Strength (min. psi)	60.0	ASTM C203
Dimensional Stability	2.00%	ASTM D2126
Flame Spread	<20	ASTM E84
Smoke Devolped	150-300	ASTM E84

STAR RFOAM