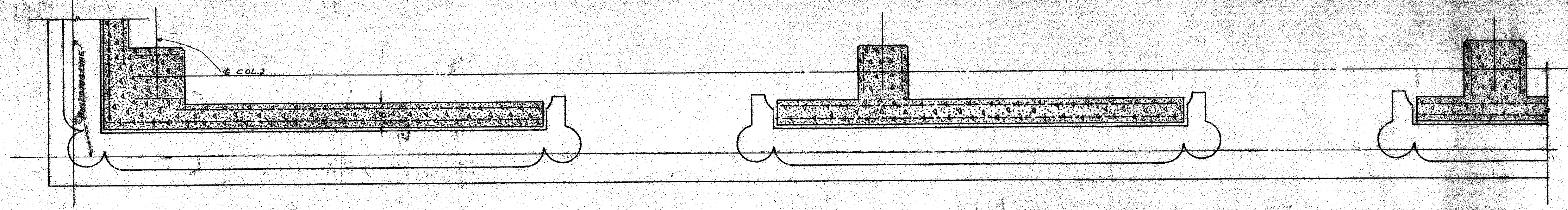


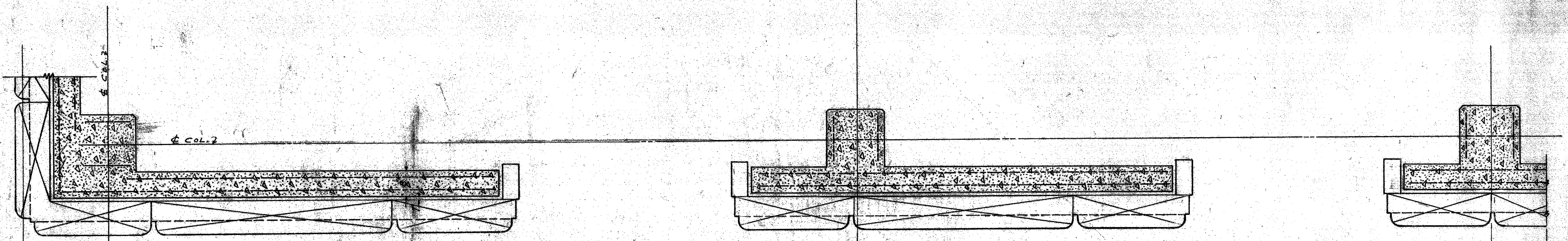
NOTE: ALL REINFORCING BARS TO BE 3/8" # SPACED 12" O.C. IN BOTH DIRECTIONS AND IN BOTH FACES OF WALL. PLACE 4 #6 BARS OVER ALL WINDOW OPENINGS.

MICROFILMED
 JAN 20 1978
 MECHANICAL DEPARTMENT

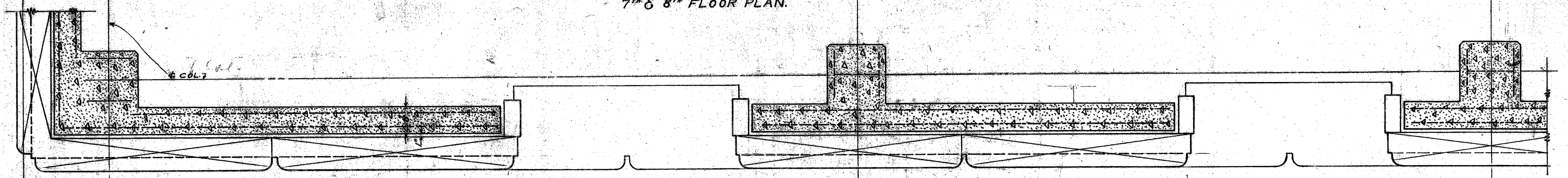
APPROVED: *[Signature]*
 DATE: *[Signature]*



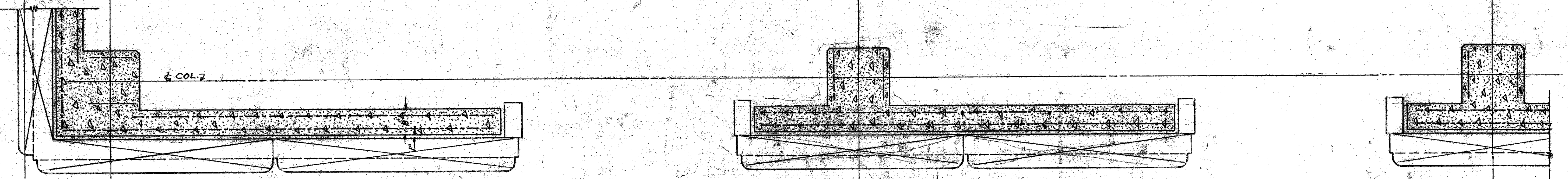
9TH FLOOR PLAN.



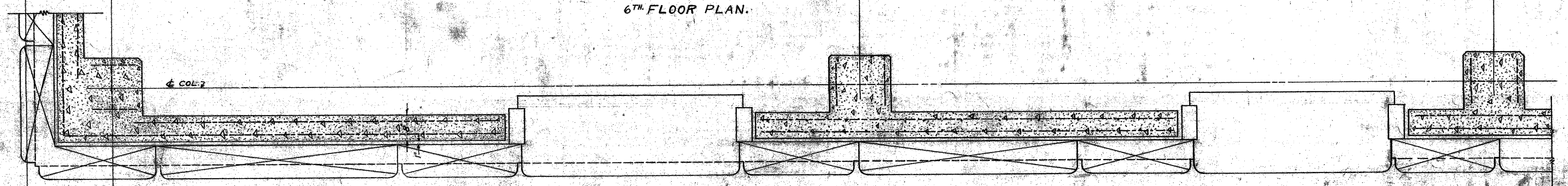
7TH & 8TH FLOOR PLAN.



7TH & 8TH FLOOR PLAN.



6TH FLOOR PLAN.



6TH FLOOR PLAN.

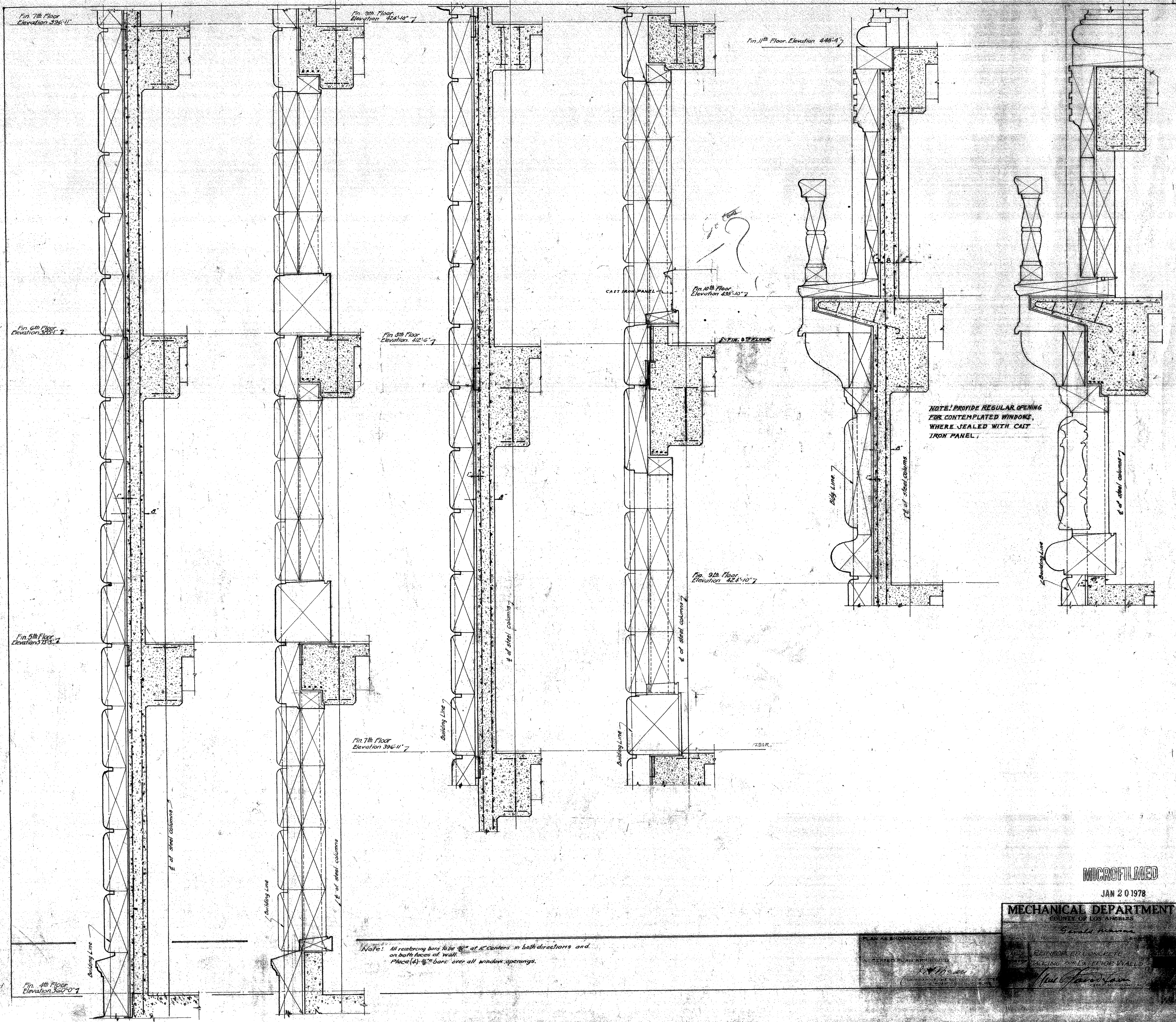
NOTE. ALL REINFORCING BARS TO BE $\frac{3}{8}$ " - 12' C. I. E. C. BOTH DIRECTIONS.
 ON BOTH FACES OF WALL.
 PLACE (#) $\frac{3}{8}$ " BARS OVER ALL WINDOW OPENINGS.

Handwritten signature

ACCEPTED
 JAN 20 1978

PLAN AS SHOWN ACCEPTED
 ACCEPTED PLAN APPROVED

REINFORCED CONCRETE
 BACKINGS FOR EXTERIOR WALL



Note: All reinforcing bars to be #4 at 12" centers in both directions and on both faces of wall. Place (4) #4 bars over all window openings.

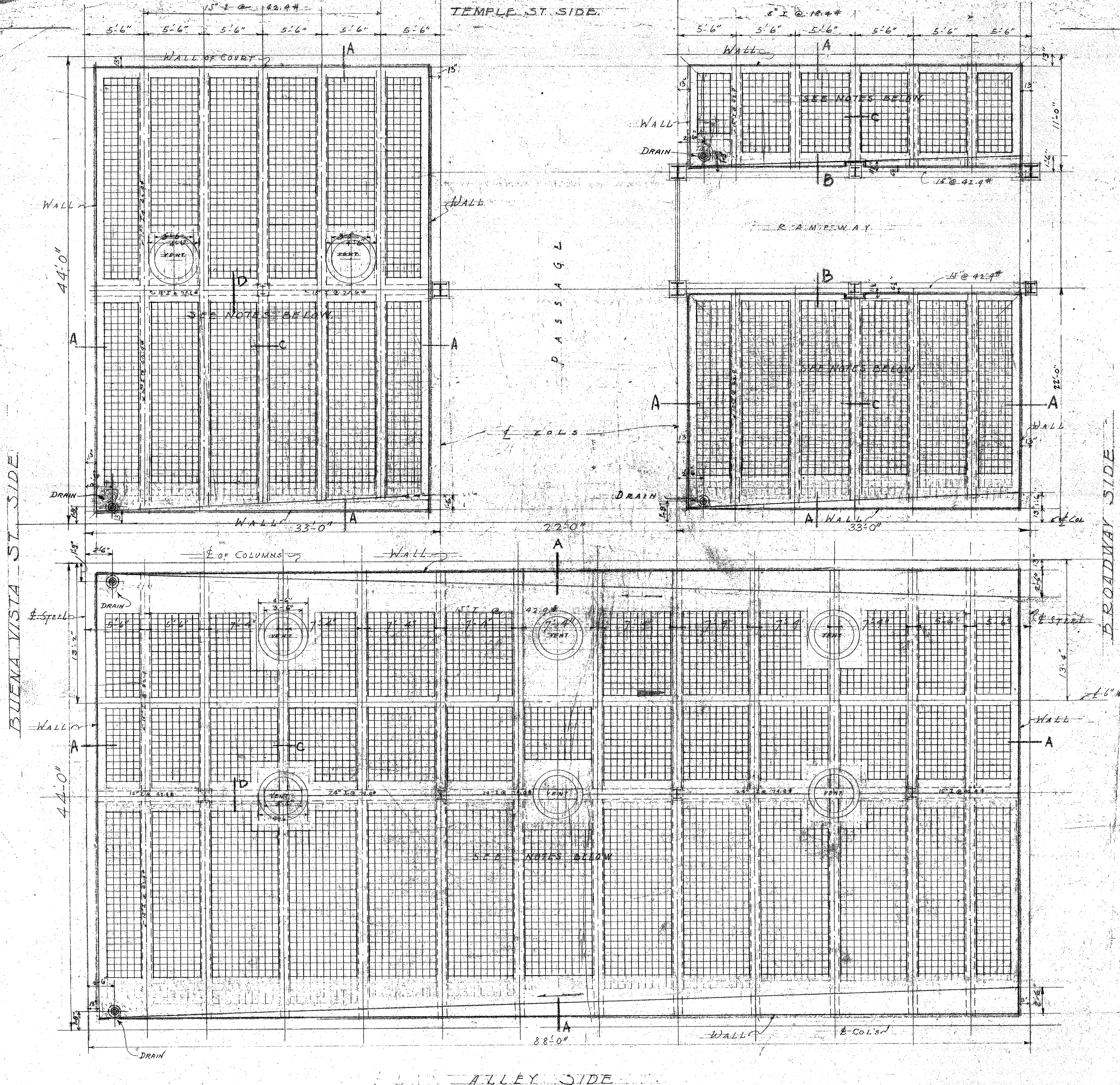
NOTE: PROVIDE REGULAR OPENING FOR CONTEMPLATED WINDOWS, WHERE SEALED WITH CAST IRON PANEL.

MICROFILMED

JAN 20 1978

MECHANICAL DEPARTMENT
COUNTY OF LOS ANGELES

SEAL
REINFORCED CONCRETE
ENCLOSING FOR EXTERIOR WALLS
[Signature]



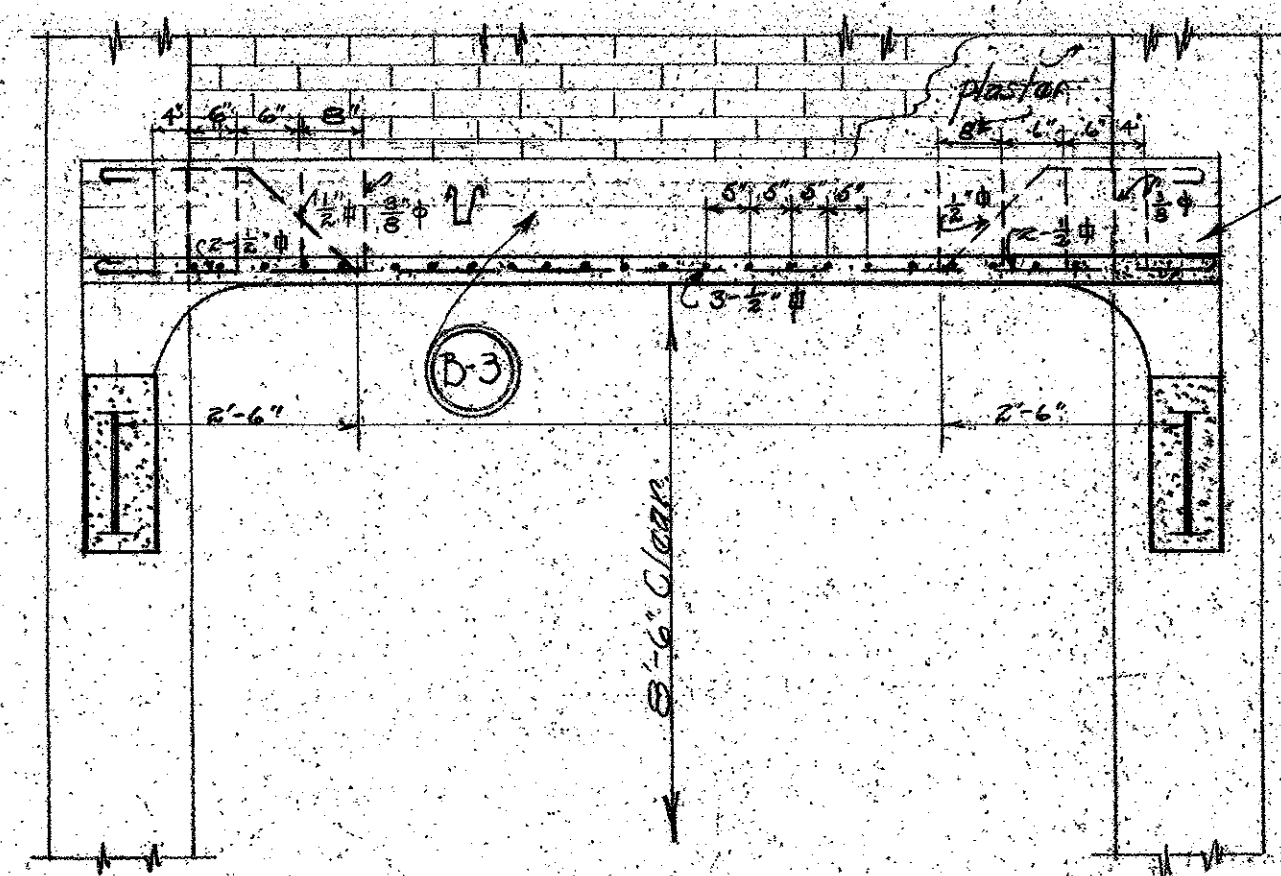
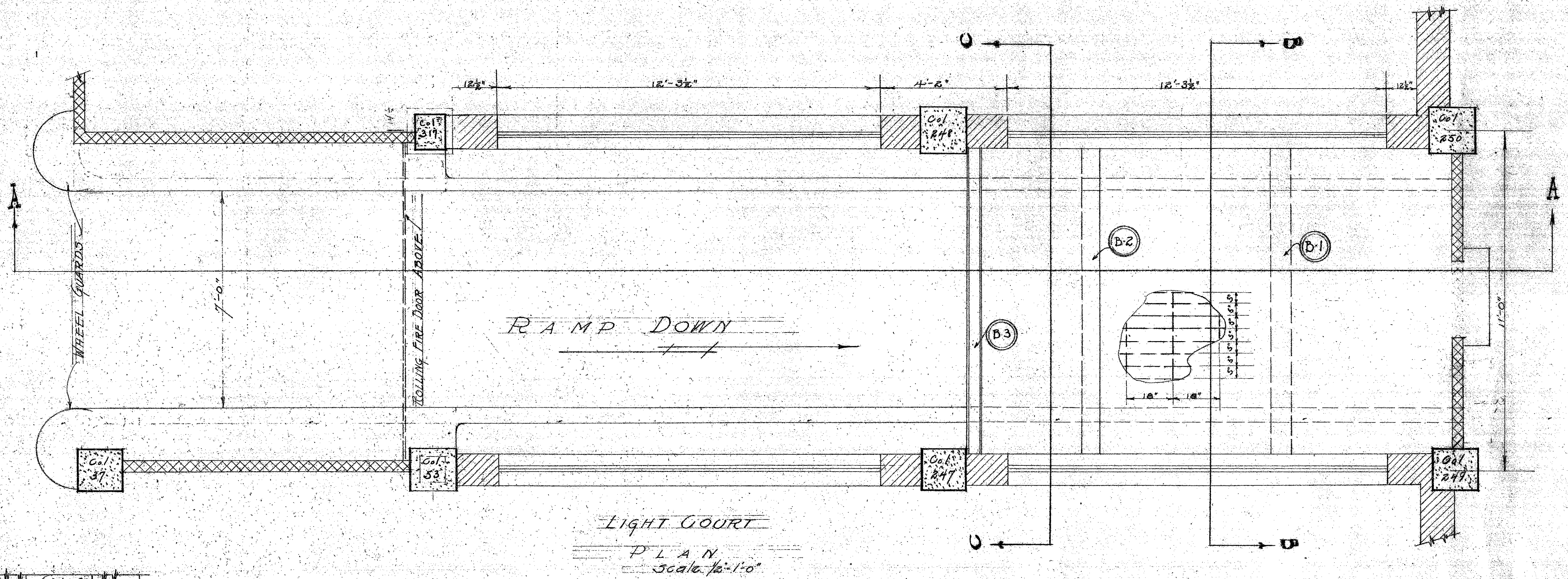
NOTE: SEE DETAILS OF SECTIONS A-B-C-D
 HIGH POINT OF DALTER (FOR DRAINAGE) LEVEL 5'-6" ABOVE L.P. OF FIN ROOFS.
 SEE SPECIFICATIONS FOR SIZES ETC.

NOTE: OVERALL SIZE OF GLASS PANELS GOVERNS - BUT NUMBER OF GLASS VAULT LIGHTS TO EACH PANEL TO BE SUBJECT OF APPROVAL.

REVISED 4/10/78 - DRAIN LOCATIONS CHANGED

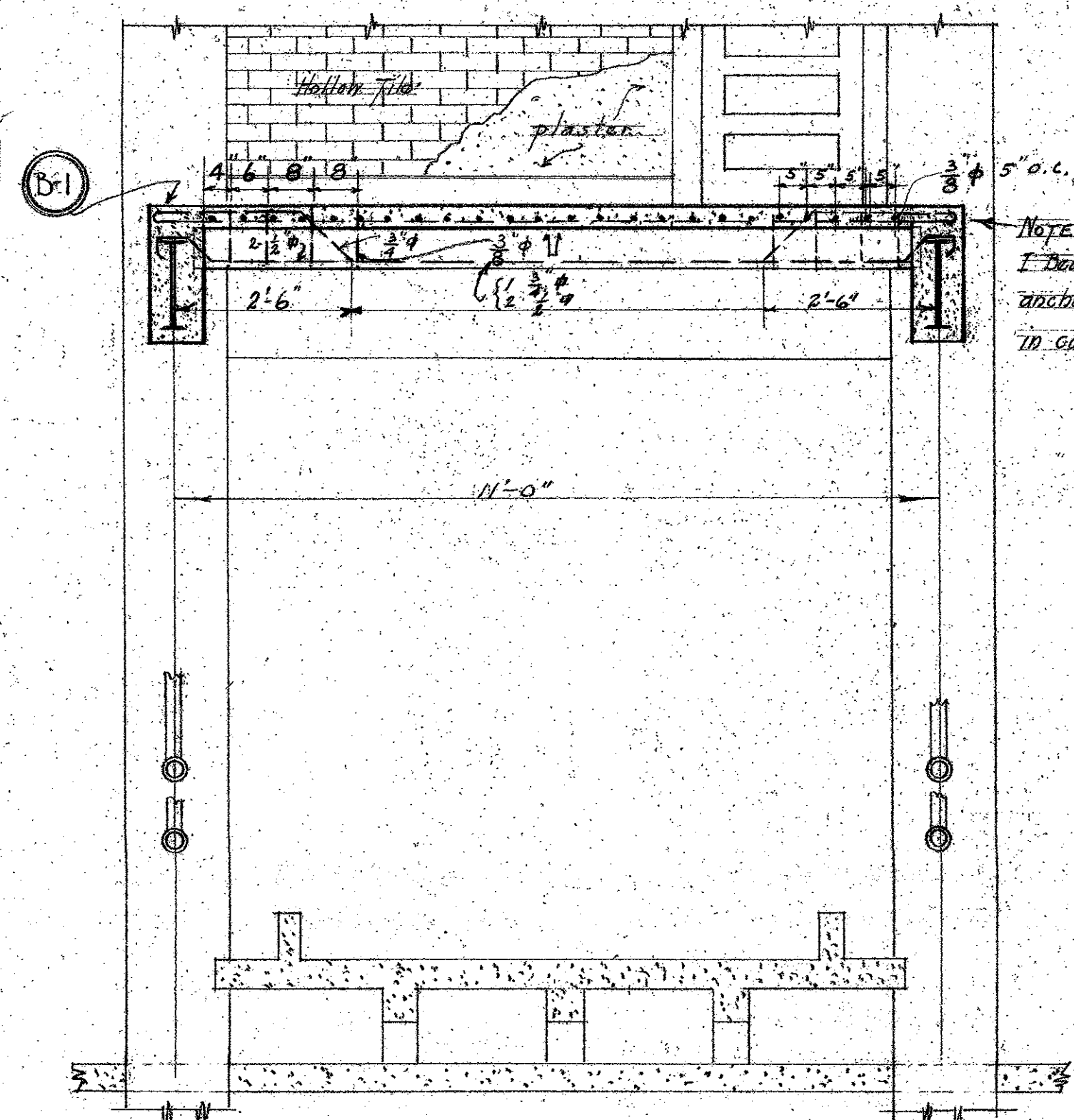
MICROFILMED
 JAN 21 1979

MECHANICAL DEPARTMENT		COURTY OF LOS ANGELES	
SCALE: 1/4" = 1'-0"	Gerald Marsak		
SHEET NO 707	PLAN OF GLASS VAULT LIGHTS	DATE	
PROJECT	THIRD FLOOR OF LIGHT COURTS		
	NEW HALL OF JUSTICE		
APPROVED	[Signature]		
	CHIEF MECHANICAL ENGINEER		



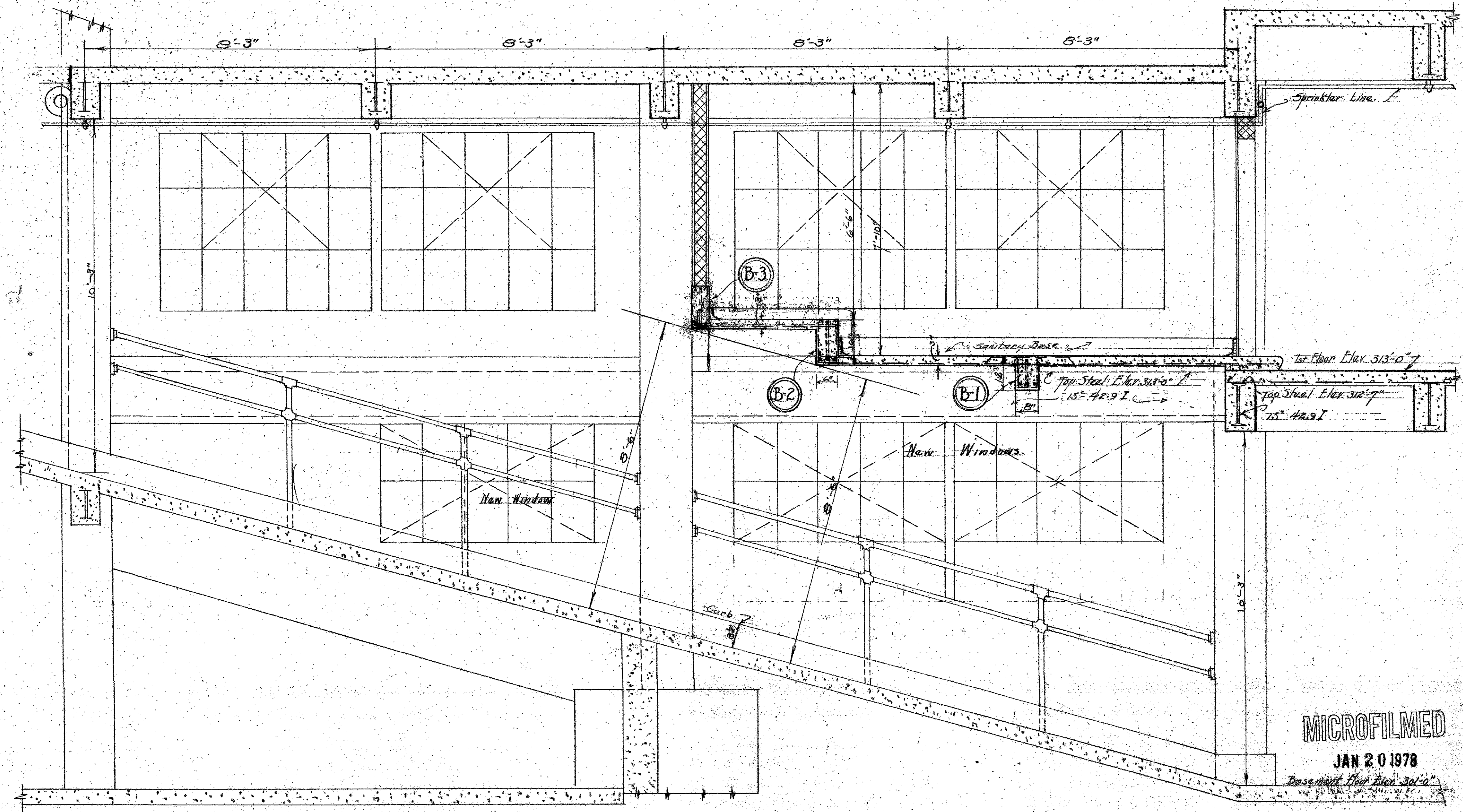
NOTE: Reinforcing rods from the slab should be extended 12" into beam.
Reinforcing details of B-2 similar to B-3.

SECTION C-C
Scale 1/4"=1'-0"



NOTE: Concrete on top of existing I-beam to be removed to provide anchorage of reinforcing steel to concrete beam as shown.

SECTION B-B
Scale 1/8"=1'-0"



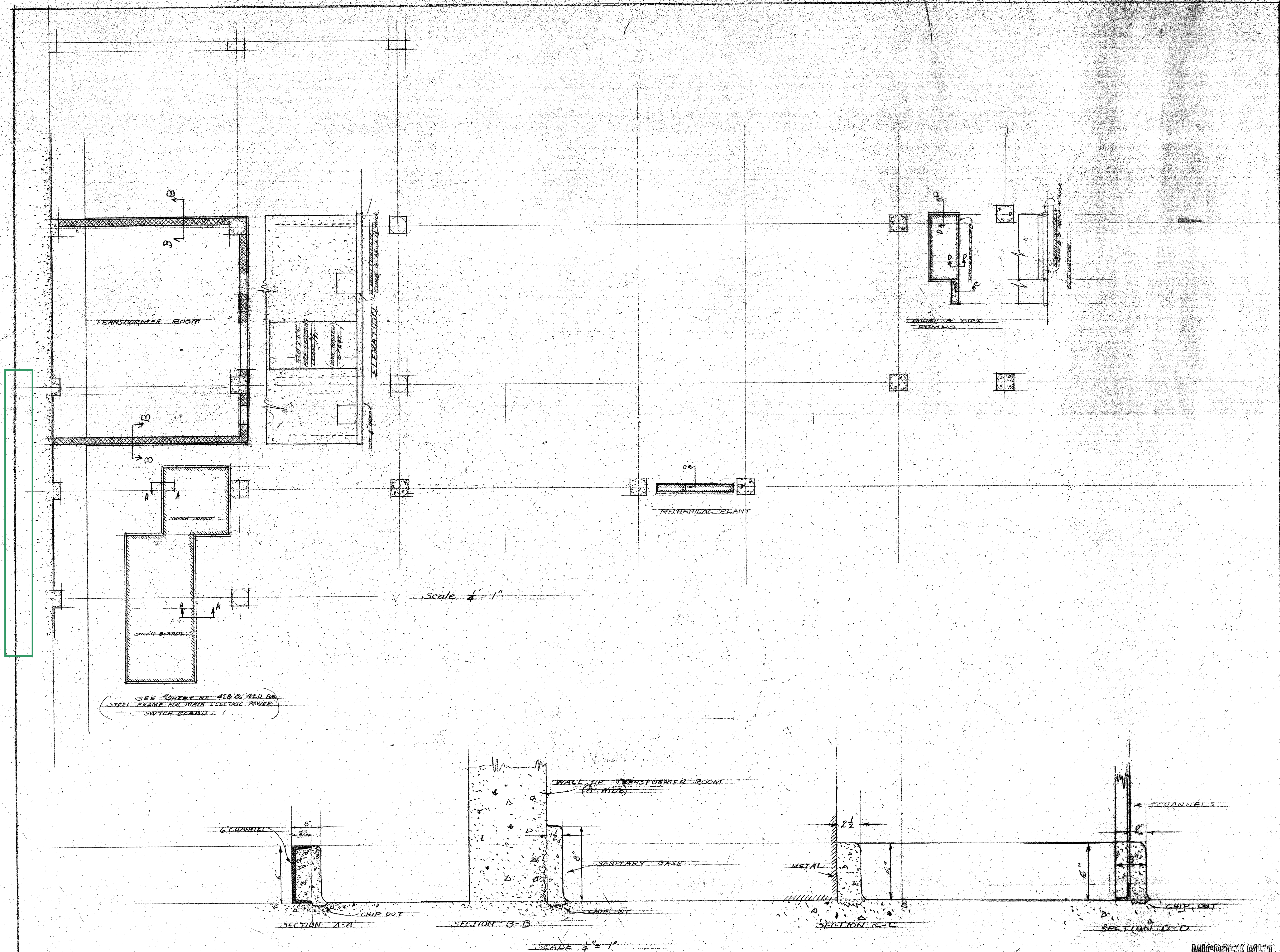
SECTION A-A
Scale 1/8"=1'-0"

Void Killed by H. Bean
7-1-25 F.O.K.

MECHANICAL DEPARTMENT
COUNTY OF LOS ANGELES
APPROVED [Signature] CHIEF MECHANICAL ENGINEER

MECHANICAL DEPARTMENT
COUNTY OF LOS ANGELES
ARCHITECT: [Signature] ELECTRICAL: [Signature] ENGINEER: [Signature]
DATE: [Signature]
708 NEW HALL OF JUSTICE
DETAIL OF ROOM OVER
RAMP WITH SECTIONS
APPROVED [Signature] CHIEF MECHANICAL ENGINEER

MICROFILMED
JAN 20 1978
Basement Floor Elev. 30'-0"
1st Floor Elev. 33'-0"



NOTES: Curb to be 6" high across all openings to Transformer Room. All curb required for locations shown above to be included in contract.

PLAN AS SHOWN ACCEPTED
 ACCEPTED PLAN APPROVED
 CHAIRMAN OF THE BUILDING COMMITTEE OF THE BOARD OF SUPERVISORS

MICROFILMED
 JAN 20 1978

MECHANICAL DEPARTMENT
 COUNTY OF LOS ANGELES

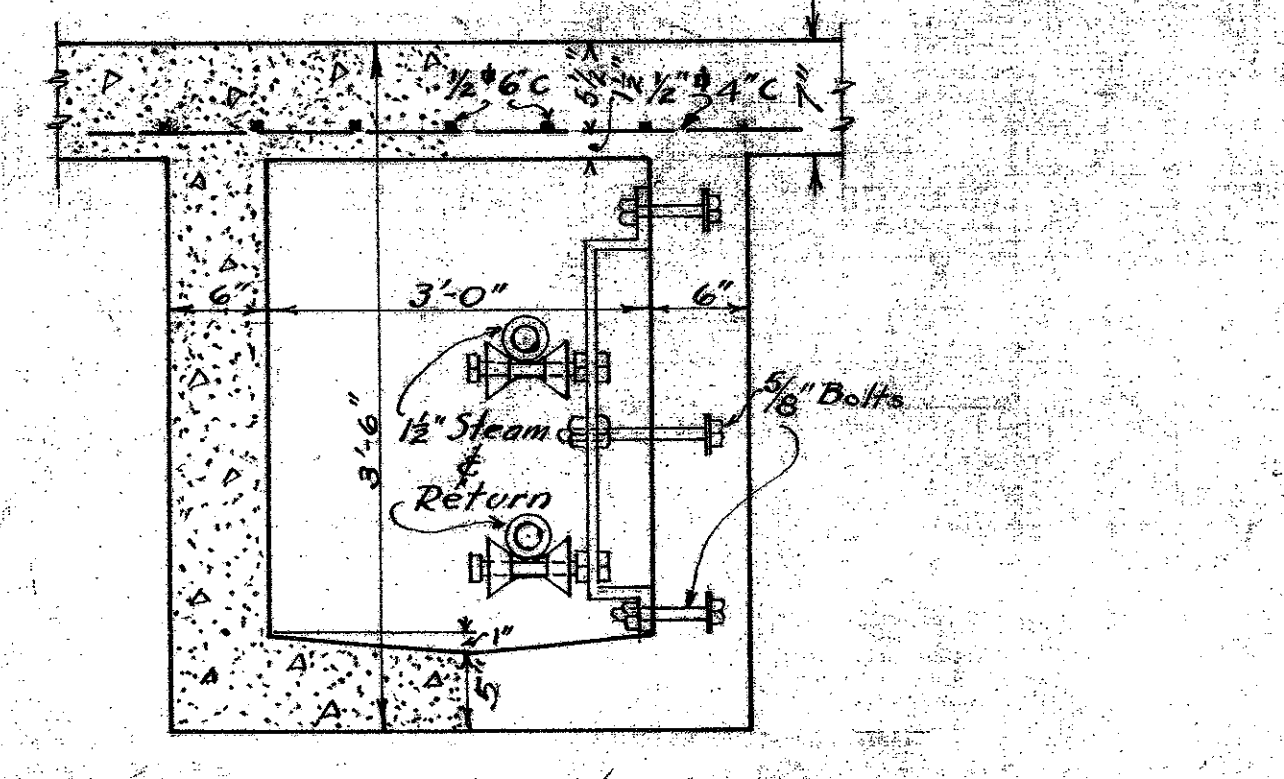
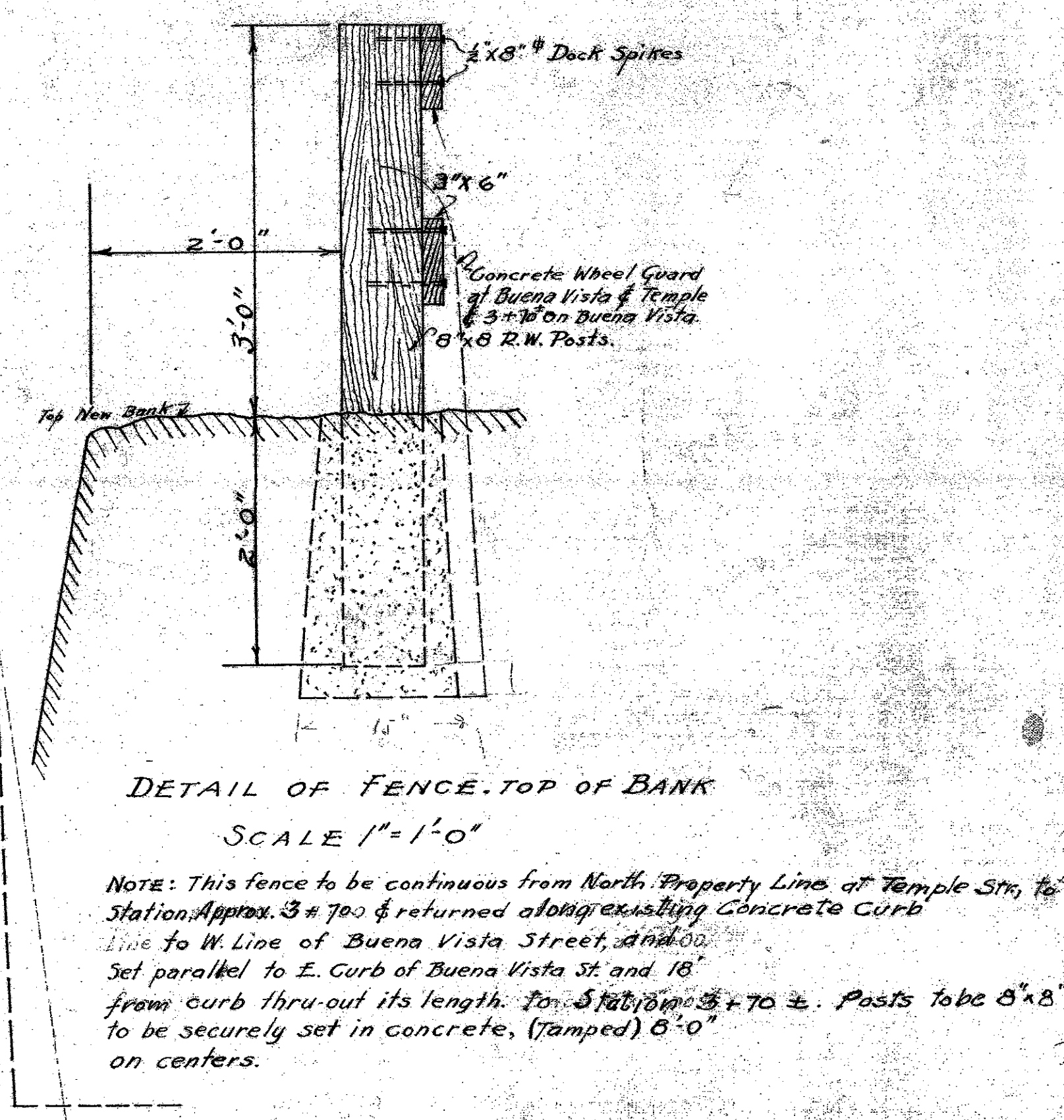
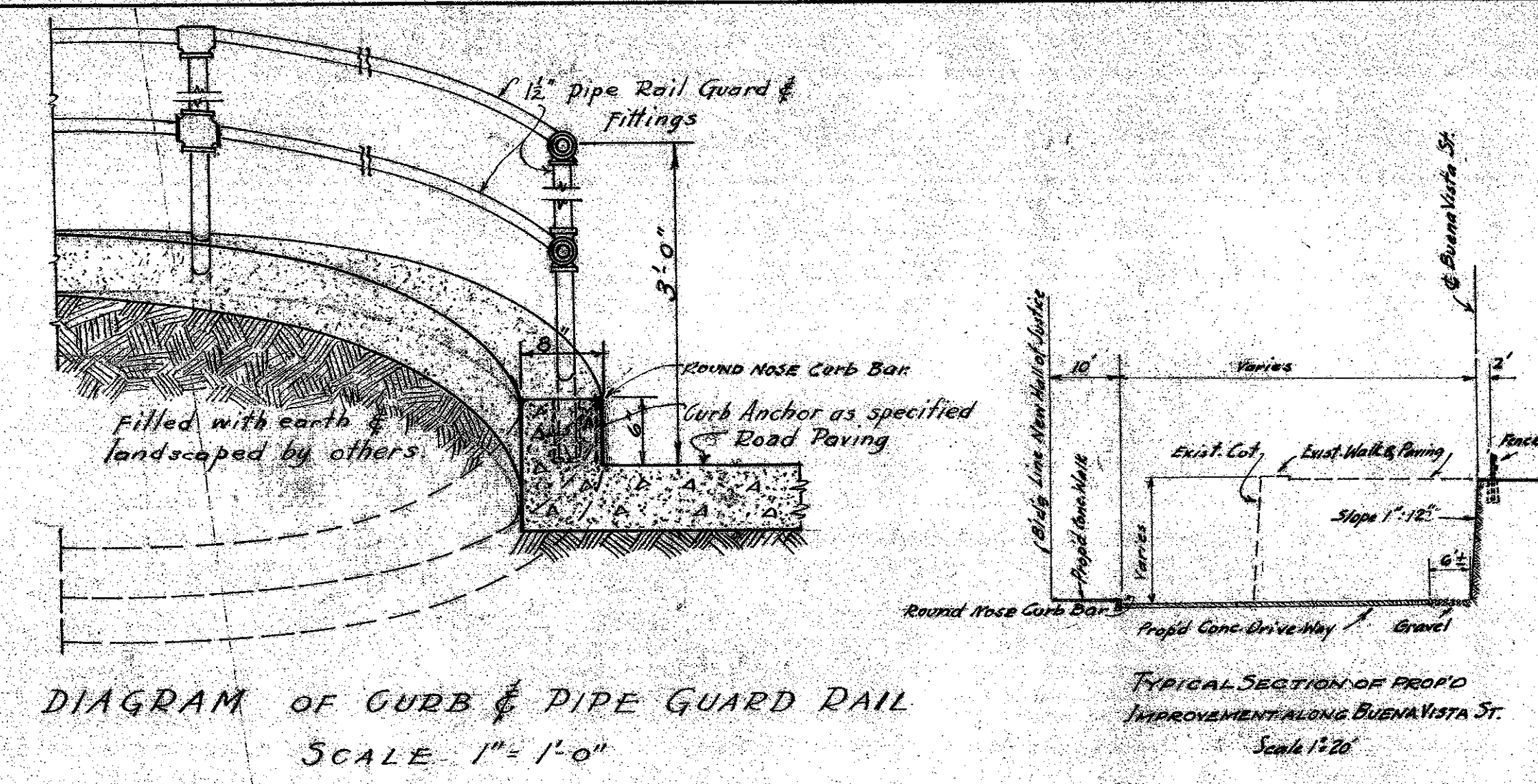
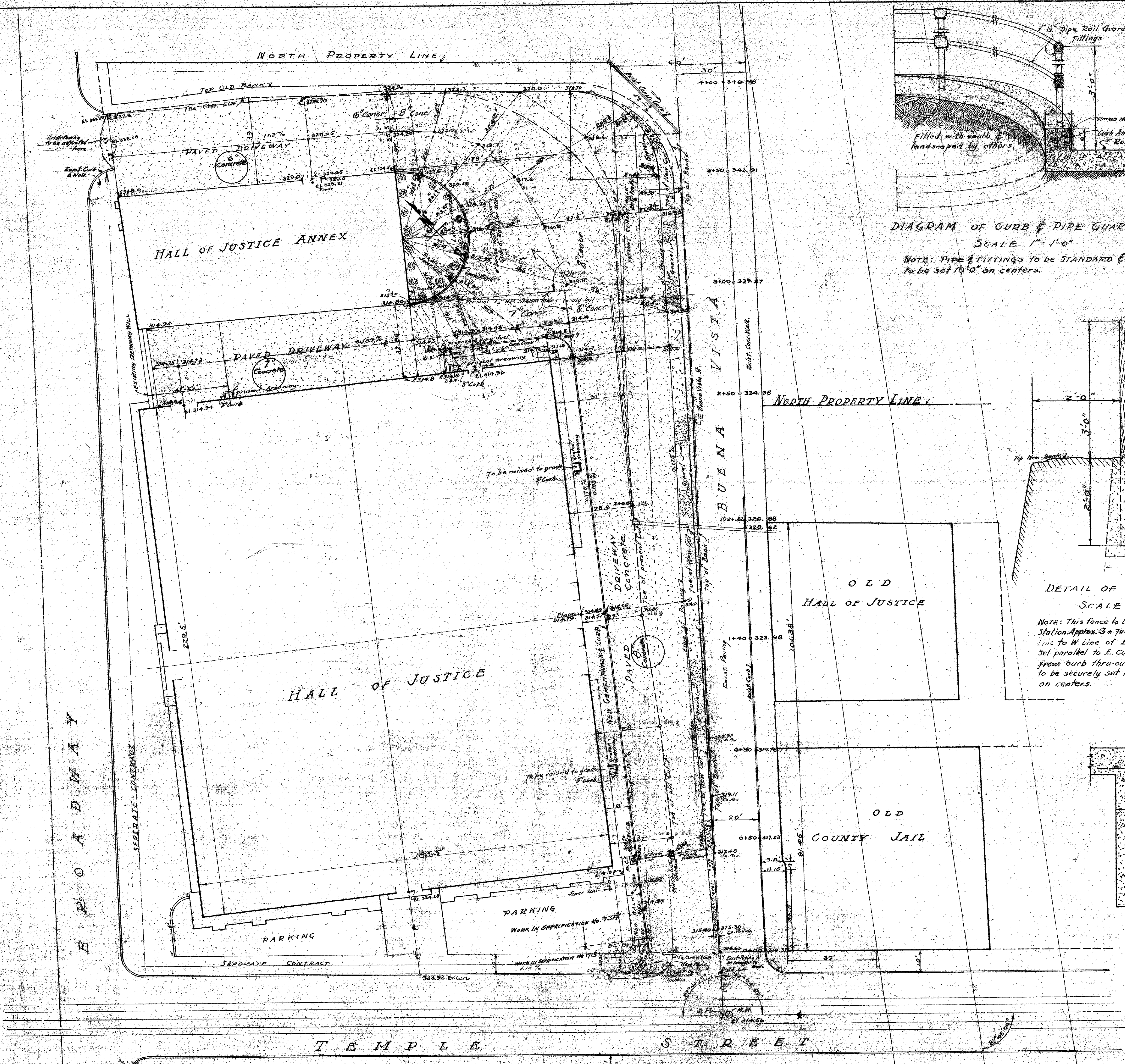
ENGINEER ASSIST.
Donald M. Moore

SHEET 709
 OF SET OF 709

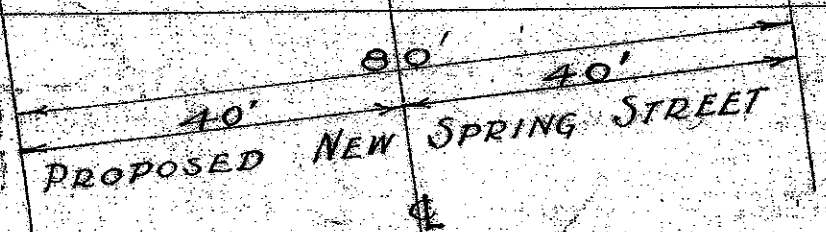
NEW HALL OF JUSTICE
 TRANSFORMER ROOM - SWITCH BOARD - CONCRETE CURBING

DATE JUN 9 1975

APPROVED
Mr. J. P. ...
 CHIEF MECHANICAL ENGINEER



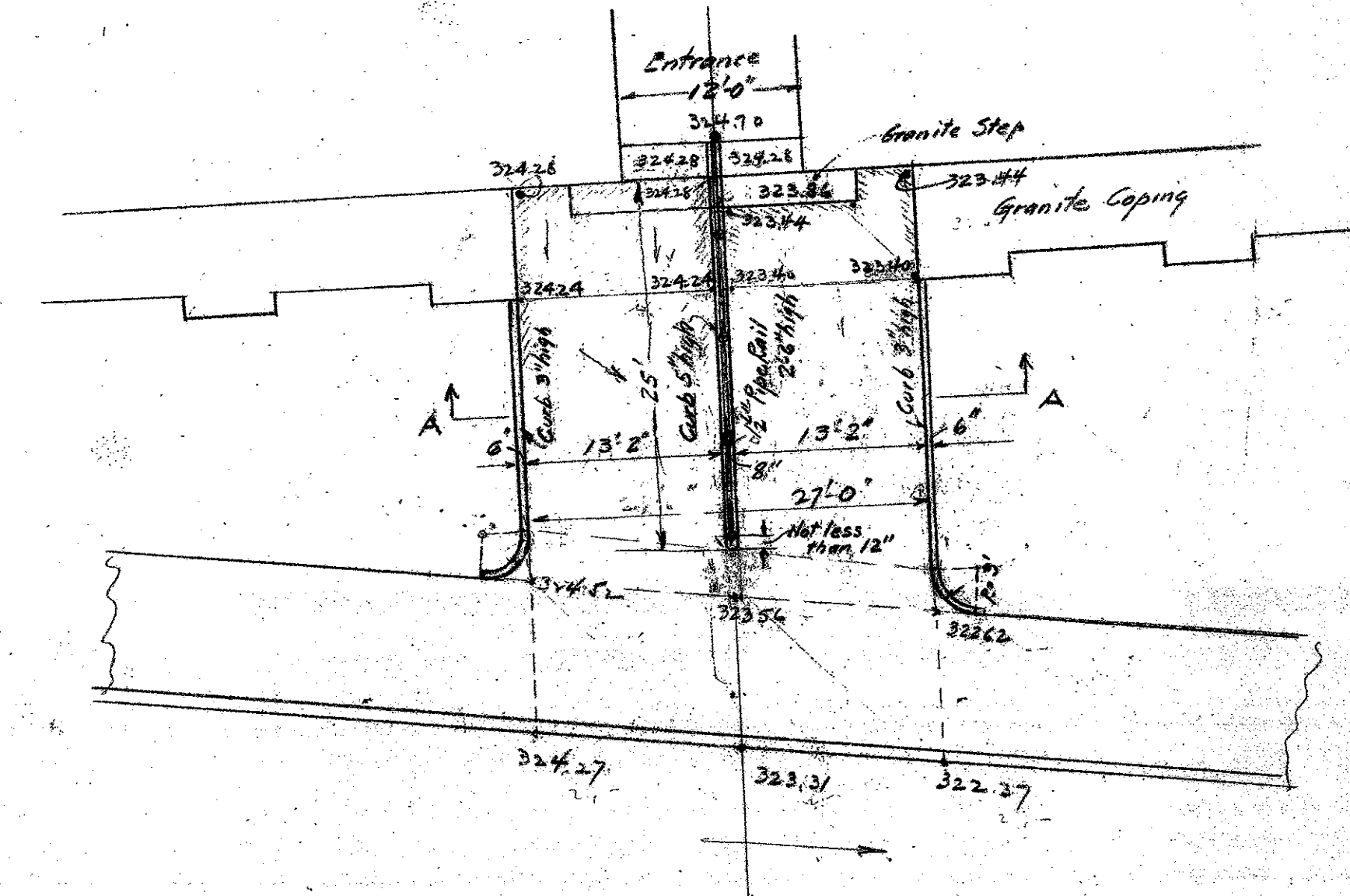
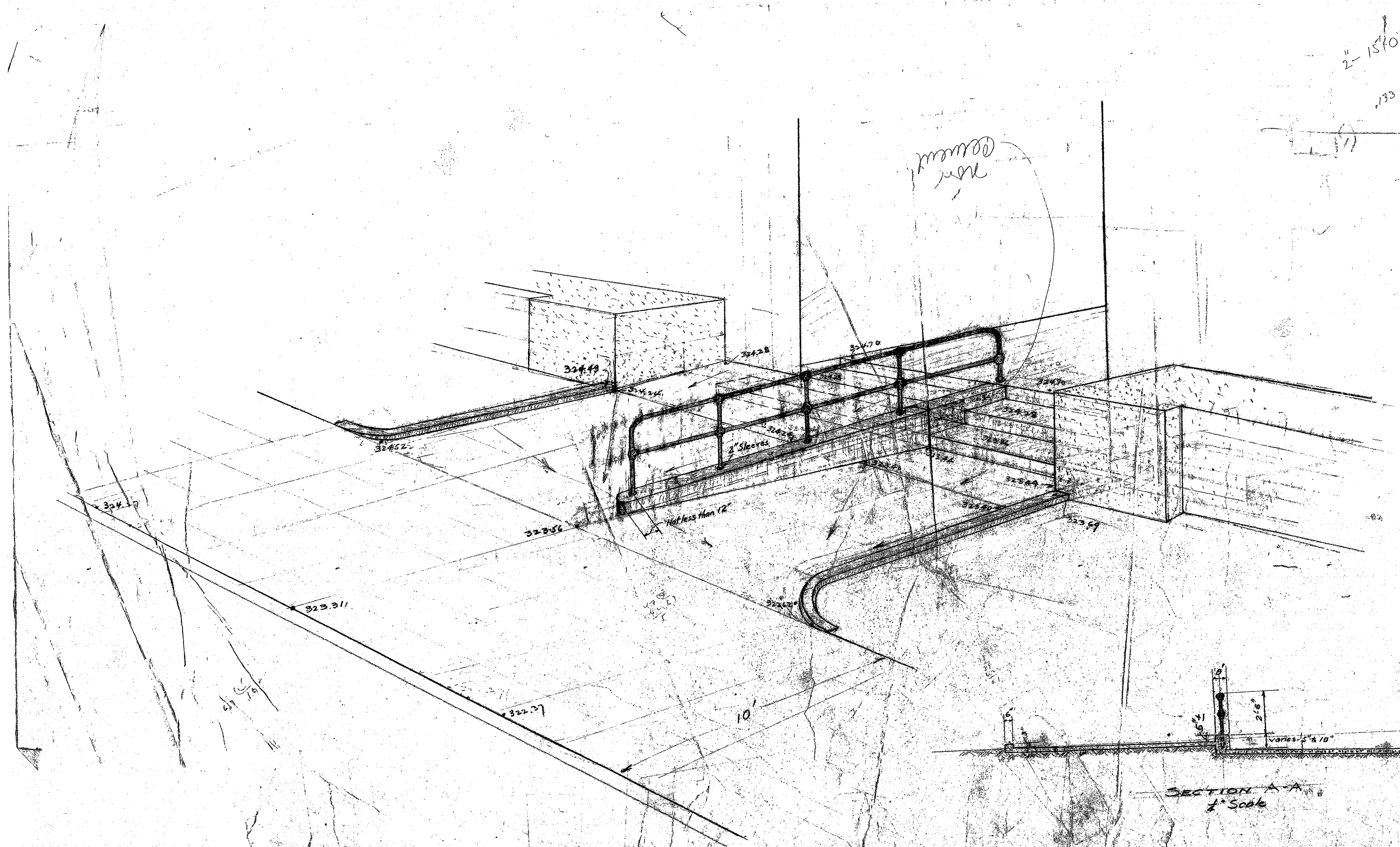
SCALE 1" = 20'



NOTE: DIAGRAM WILL BE FURNISHED TO CONTRACTOR FOR BLOCKING OF TOP FINISH

MICROFILMED
 JAN 20 1978

MECHANICAL DEPARTMENT	
NEW HALL OF JUSTICE	
PAVED DRIVEWAY GRADE	
STAIRS & DETAILS OF	
CURB & GUARD RAILS	
APPROVED:	



TEMPLE ST. ENTRANCE
Scale 1" = 10'

PLAN AS SHOWN ACCEPTED
ACCEPTED PLAN APPROVED
CHAIRMAN OF THE BOARD OF SUPERVISORS

MICROFILMED
JAN 20 1978

MECHANICAL DEPARTMENT
COUNTY OF LOS ANGELES

ARCHITECT: 714	ELECTRICAL: 714	ENGINEER: 714
PROJECT: NEW HALL OF JUSTICE - CONCRETE WALK	DATE: 12-8-1926	
DESCRIPTION: TEMPLE ST. ENTRANCE		
APPROVED: [Signature]		