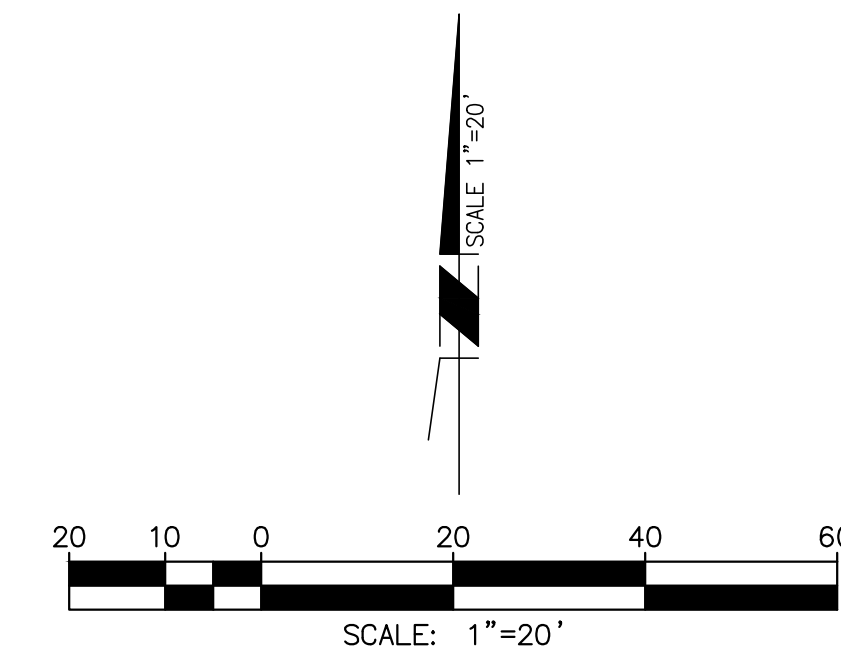


PLAN VIEW  
**DEMOLITION PLAN**  
 SCALE: 1"=20'

**CONSTRUCTION NOTES**  
 ② DEMO EXISTING ASPHALT PAVEMENT  
 Ⓢ PROTECT IN PLACE



**ac martin**  
 ARCHITECTURE  
 INTERIOR ARCHITECTURE  
 PLANNING RESEARCH

444 South Flower Street, Ste 1200  
 Los Angeles, CA 90071  
 1/213 614 8002  
 1/213 614 8022

project number: **C-101**  
 plot date: **6/27/2017**

**NEW STUDENT RESIDENCE HALL**  
 San Diego State University  
 5500 Campanelle Drive  
 San Diego, CA 92182

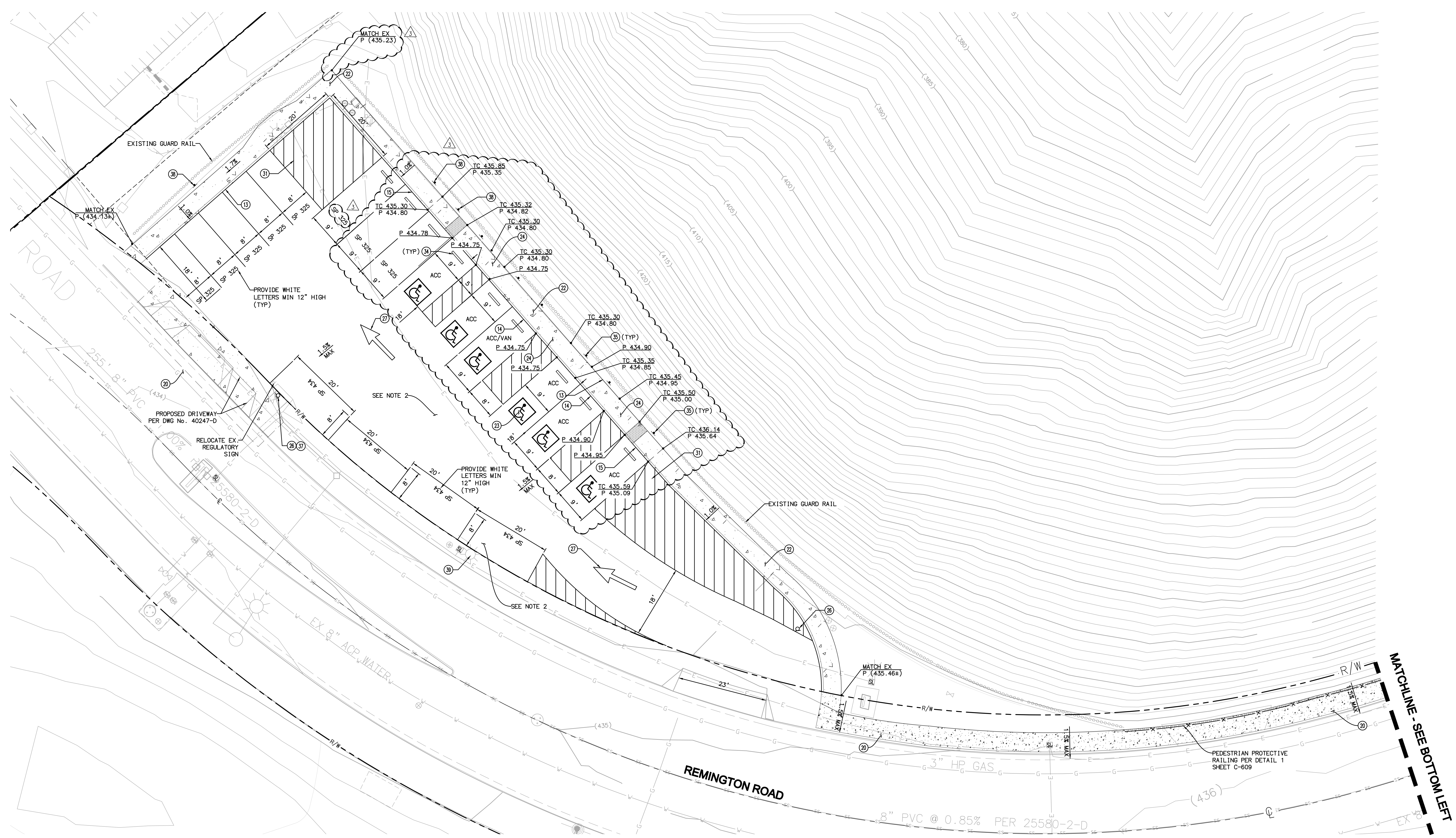
**DEMOLITION PLAN**

consultant: **Clark Group**

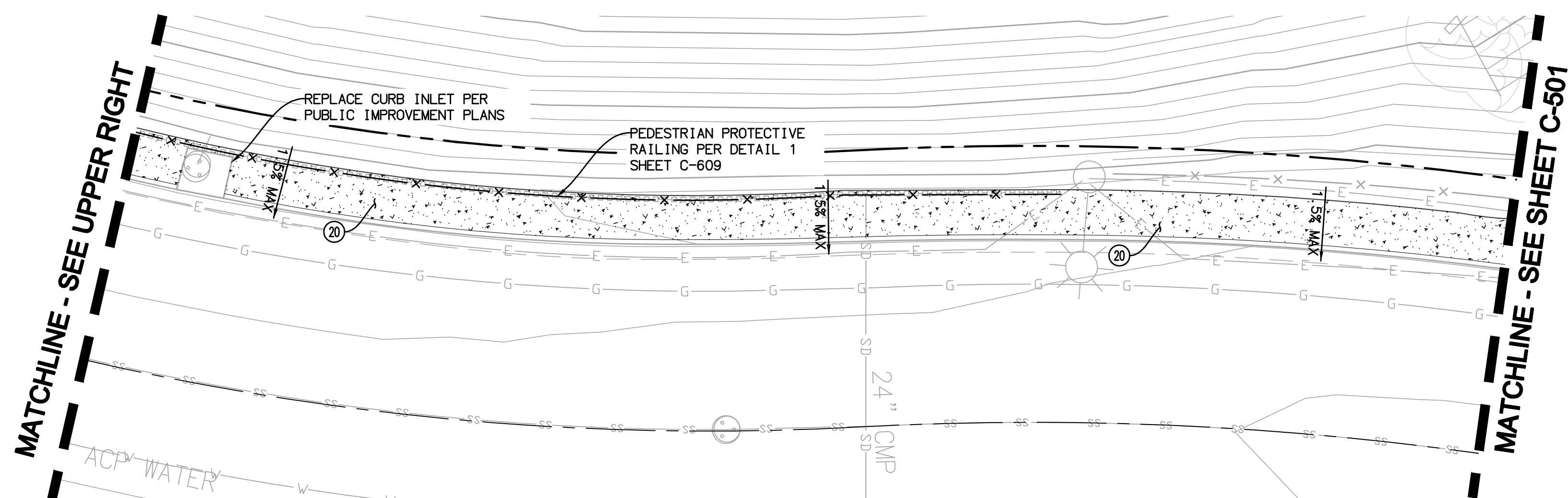
Project Information		Revision Information	
job number	no.	date	revision
project director			
project designer			
project architect			
plan check			
submit date			
drawn by			
checked by			
construction issue date			

**SAN DIEGO STATE UNIVERSITY**  
 Leadership Starts Here

H:\PROJECTS\159313\CAD\LAND\DLV\04-BASE BUILDING PACKAGE\159313-PC-04.DWG JOHNSON, CLAY 5/13/2019 3:51:58 PM



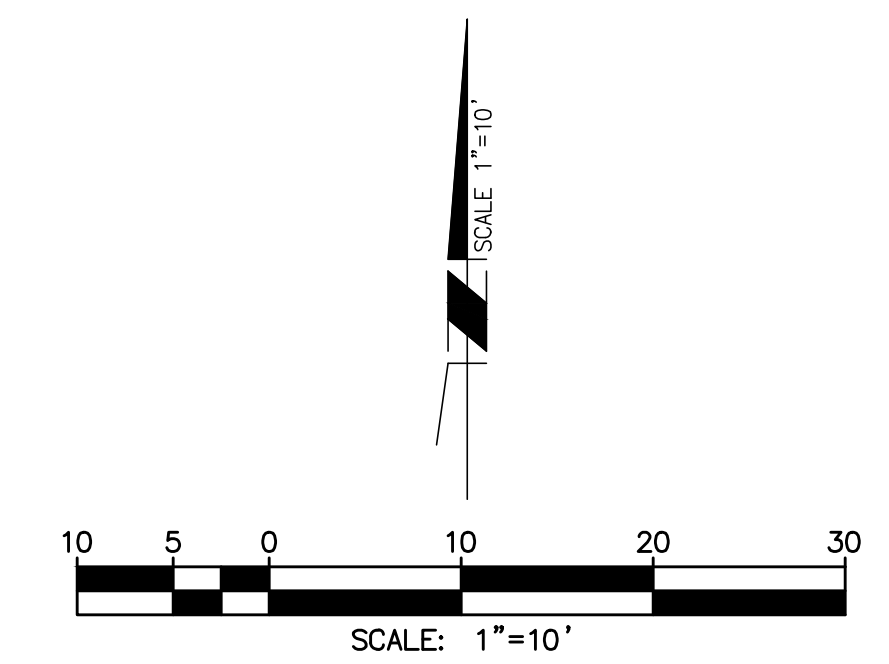
PLAN VIEW  
**OFFSITE PARKING LOT**  
SCALE: 1"=10'





**CONSTRUCTION NOTES**

- ① CONSTRUCT 6" CURB PER DETAIL 6/C-601, SEE DEMO PACKAGE
- ② CONSTRUCT 0" CURB PER DETAIL 7/C-601, SEE DEMO PACKAGE
- ③ TRANSITION FROM 6" TO 0" CURB PER DETAIL 2/C-608
- ④ WORK IN PUBLIC RIGHT OF WAY PER DWG NO. 40247-D
- ⑤ CONSTRUCT SIDEWALK PER DET 1/C-608
- ⑥ ACCESSIBLE STALL STRIPING AND SIGNAGE PER DET 4/C-608
- ⑦ INSTALL PEDESTRIAN RAMP PER DET 6/C-608
- ⑧ INSTALL SIGNAGE PER DET 9/C-608
- ⑨ INSTALL 10" CALTRANS TYPE I ARROW PER A24A
- ⑩ CONCRETE PAVING PER LANDSCAPE PLANS
- ⑪ WHEEL STOP PER DET 7/C-608
- ⑫ INSTALL ACCESSIBLE PARKING SIGN PER DETAIL 8/C-608
- ⑬ RELOCATED REGULATORY SIGN
- ⑭ INSTALL SP 325 SIGN
- ⑮ INSTALL SP 434 SIGN ON EXIST. LIGHT POLE

- NOTE:**
1. SEE SHEET C-001 IN DEMO PACKAGE FOR LEGEND
  2. EX. PARKING LOT TO BE RESTRIPTED



**SAN DIEGO STATE UNIVERSITY**  
Leadership Starts Here

revision	no.	date	revision	by
1	1	11.25.19	BULLETIN 7	CJ
2	2	11.25.19	BULLETIN 15	CJ
3	3	11.25.19	ASB-038	CJ

project information	job number: 20172911
	project director: J. FOX
	project designer: D. BARRY
	project architect: P. KUM
	plan check submital date: 5/13/2019
	drawn by: A. MEIER
	checked by: B. OLIVER
	construction issue date:

consultant: **ac martin**  
444 South Flower Street, Ste 1200  
Los Angeles, CA 90071

1/215 613 1900  
1/215 614 8002

**NEW STUDENT RESIDENCE HALL**  
San Diego State University  
5500 Campanelle Drive  
San Diego, CA 92182

**OFFSITE PARKING LOT**

project: **C-504**

sheet number: **C-504**

plot date: 5/13/2019

ASI-035 - LOT 10A - May 8, 2019