

- PLAN NOTES:
1. SEE SHEET S01.101 FOR GENERAL NOTES.
  2. SEE SHEET S01.102 FOR SPECIAL INSPECTION.
  3. SEE SHEETS S01.103 THROUGH S01.105 FOR TYPICAL DETAILS.
  4. SEE SHEET S02.304 FOR COASTER FOUNDATION SCHEDULE.
  5. SEE SHEET S02.304 FOR TYPICAL RIDE FOUNDATION DETAILS.

**PG&V**  
DESTINATIONS  
PECHAMA GUYTON ALBERS & VETS, INC.  
201 West Broadway, Suite 1000, St. Louis, MO 63102  
(314) 231-1718 WWW.PG&V.COM

04/01/2021

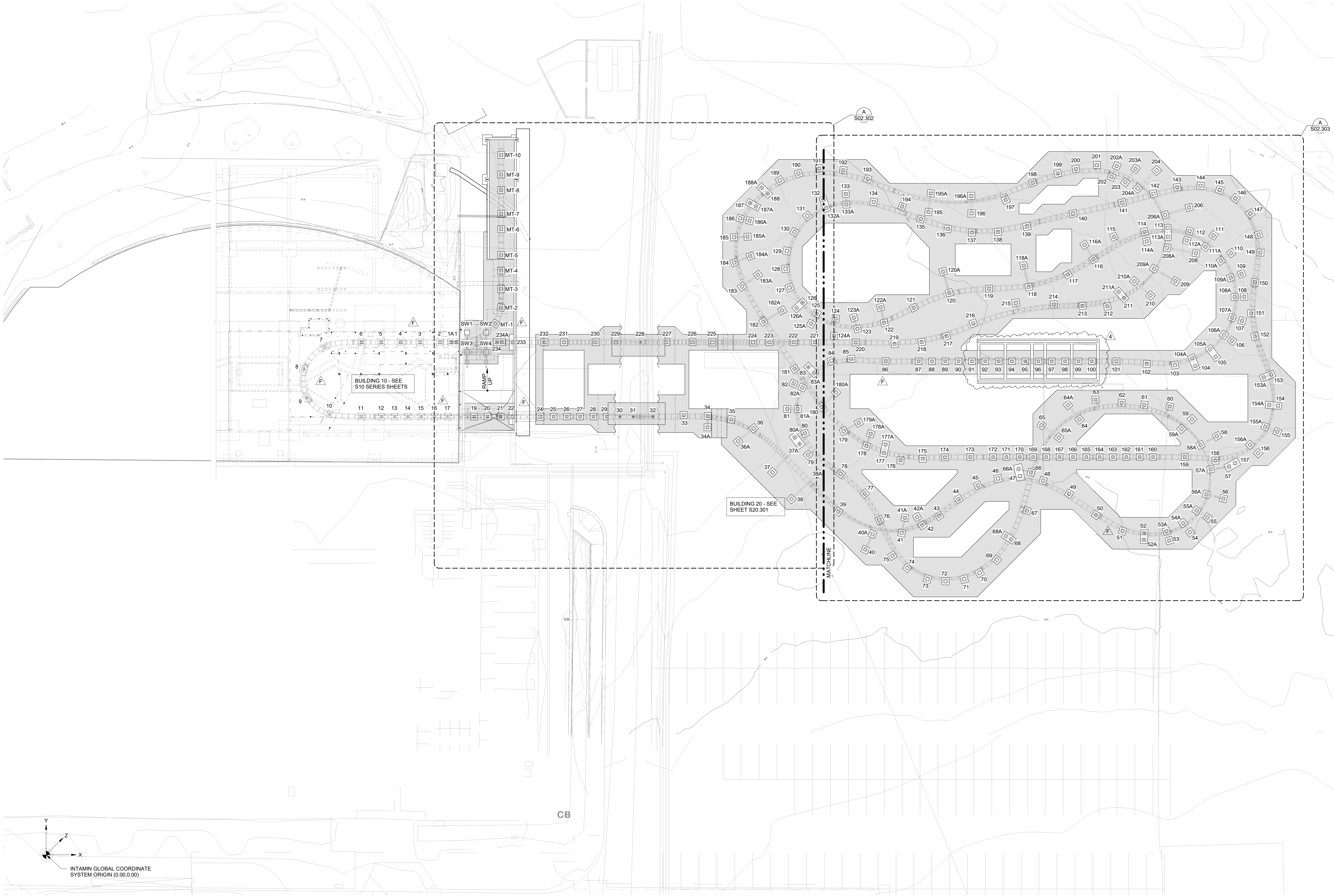
REGISTERED PROFESSIONAL ENGINEER  
No. 18-0005  
STRUCTURAL  
STATE OF CALIFORNIA  
EXPIRATION DATE 04/01/2021

EDM  
EDM Incorporated  
220 Mansion House Center  
St. Louis, Missouri 63102  
Phone (314) 231-5485  
Fax (314) 231-8187  
E-MAIL: rfrank@edminc.com  
© COPYRIGHT 2020 EDM INCORPORATED  
JOHN R. SCHIRMER  
P.E. No. 32066  
#19117.00

Accessibility for Persons with Disabilities:  
The drawing contains barriers and elements critical to providing Access for Disabled Persons. Contractor shall provide verification and certification of Compliance with the applicable accessibility regulations.

Theming Design Intent:  
The theming scope of work shown on these drawings is for design intent. Curves, sketches, drawings, picture references, material specifications, and notes on this document are for the express purpose of design intent. Structural design, code compliance, manufacture, installation, and safety of operation are to be provided by the Contractor including engineering documentation signed and sealed by a qualified Engineer licensed to practice in the state of California. The Architect/Engineer's review of submittals is for the purpose of checking for conformance with information given and the design concept expressed in the Contract Documents.

Ride Disclaimer:  
Outlets, aesthetics, or references of a possible "Ride" or "Rider" or use of any "ride" terms such as "coaster", "heavy-duty-ride", "trade names, etc. on this drawing are for purpose of location, general identification, and reference only. Pechama, Guyton, Albers, and Vets, Inc. and all engineers or companies listed on this drawing hereby affirm and warrant that the "Ride" however shown or referenced on this drawing is not in any way, shape, or form the creation or responsibility of the Architect/Engineer. Its design, structural support, manufacture, erection, approval, acceptance, operation, safety, maintenance, and all of its functions, characteristics, or performance are not a part of the Architect/Engineer's work. Such functions are to be performed to the satisfaction of the Owner for such purpose, or by Owner's personnel.



REVISION NO.	DESCRIPTION	REVISION DATE
1	Revision 10	06/10/2020
A	Adoption A	3/1/2020
F	Adoption F	4/1/2021

**SeaWorld**  
SAN DIEGO

**2021**  
**Attraction**  
San Diego, California

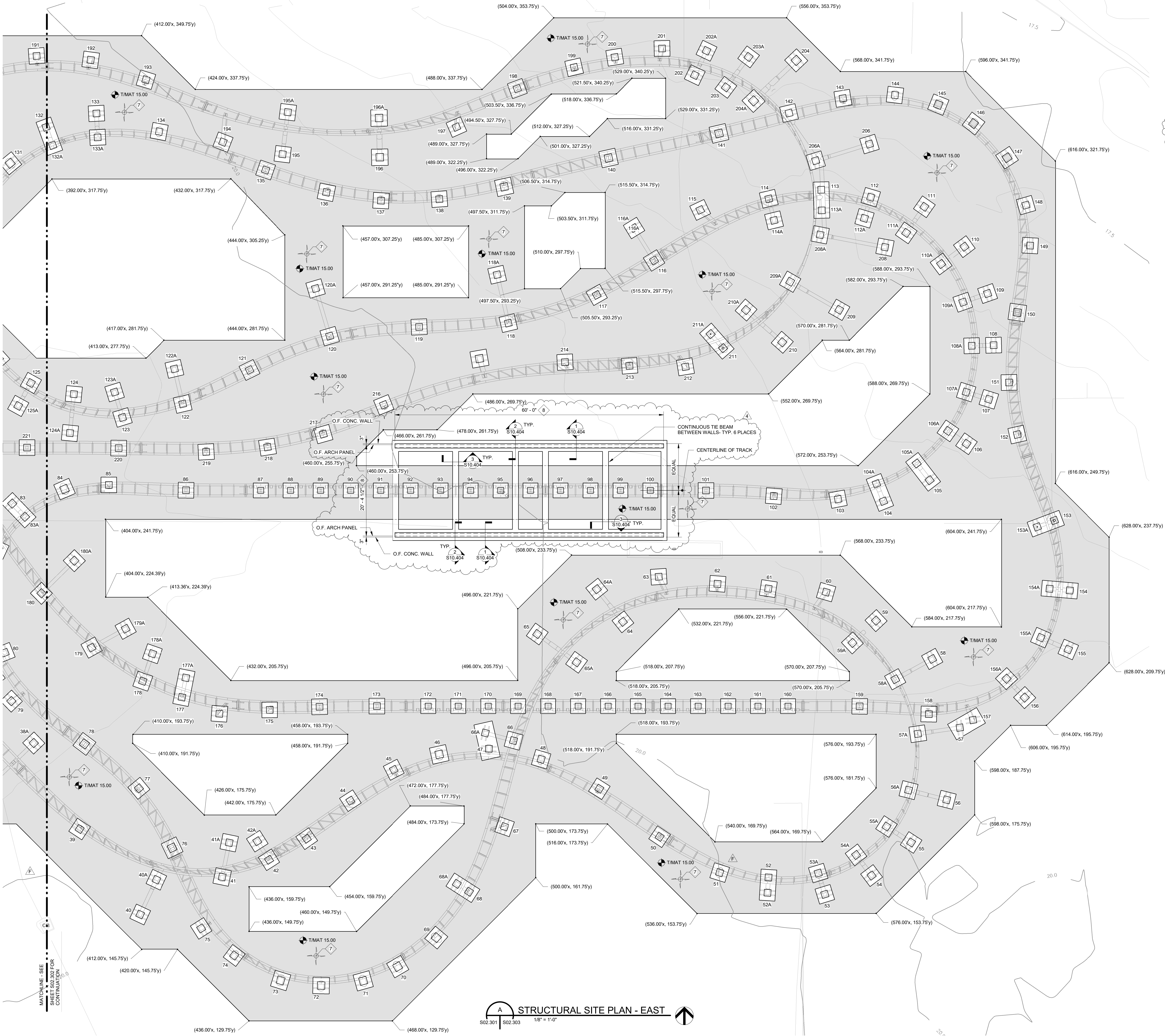
ISSUE FOR BID / ISSUE FOR PERMIT

STRUCTURAL SITE PLAN

DATE	March 12, 2020
DR	JJJ OK OSR
PG&V	64096.00 CLIENT SEA

SHEET NUMBER  
**S02.301**





- PLAN NOTES:**
1. SEE SHEET S01.101 FOR GENERAL NOTES.
  2. SEE SHEET S01.102 FOR SPECIAL INSPECTION.
  3. SEE SHEETS S01.103 THROUGH S01.105 FOR TYPICAL DETAILS.
  4. SEE SHEET S02.304 FOR COASTER FOUNDATION SCHEDULE.
  5. SEE SHEET S02.304 FOR TYPICAL RIDE FOUNDATION DETAILS.
  6. (000.00', 000.00') - DENOTES EDGE OF MAT SLAB COORDINATES REFERENCED FROM INTAMINS GLOBAL COORDINATE SYSTEM ORIGIN (0.00, 0.00) - SEE SHEET S02.301.
  7. MAT CONSTRUCTION: CONCRETE THICKNESS: 15" REINFORCEMENT: #6@12 EACH WAY, TOP AND BOTTOM BASE COURSE: 2 FT. OF REMEDIATED SOIL FILL PREPARED PER GEOTECHNICAL REPORT.
  8. GENERAL CONTRACTOR COORDINATE/VERIFY ALL DIMENSIONS WITH ARCH PANEL (QUONSET HUT) MANUFACTURER AND ARCHITECT. COORDINATE DIMENSIONS AND ALL OTHER REQUIREMENTS WITH AFFECTED TRADES. CONTACT ARCHITECT/ENGINEER IF REVISIONS TO DIMENSIONS/REQUIREMENTS ARE NECESSARY. BASIS OF DESIGN IS MODEL Q20-10 BY POWERBILT STEEL BUILDINGS, INC.

**PGAV DESTINATIONS**  
PECHAM GUYTON ALBERS & VETS, INC.  
201 West Broadway, Suite 100, St. Louis, MO 63102  
(314) 231-1718 WWW.PGAV.COM

04/01/2021

REGISTERED PROFESSIONAL ENGINEER  
No. 5-3595  
STATE OF CALIFORNIA  
EXPIRATION DATE 12/31/2021

**EDM Incorporated**  
220 Mansion House Center  
St. Louis, Missouri 63102  
Phone (314) 231-5485  
Fax (314) 231-8187  
E-MAIL: rfrank@edminc.com  
© COPYRIGHT 2020 EDM INCORPORATED  
JOHN R. SCHIRMER  
P.E. No. 5206  
#19117.00

**Accessibility for Persons with Disabilities:**  
The drawing contains barriers and elements critical to providing Access for Disabled Persons. Contractor shall provide verification and certification of Compliance with the applicable accessibility regulations.

**Theming Design Intent:**  
The theming scope of work shown on these drawings is for design intent. Quotes, sketches, drawings, picture references, material specifications, and notes on this document are for the express purpose of location, general identification, placement, and sequencing only. Products, materials, and Vets, Inc., and all engineers or companies listed on this drawing hereby agree to refer to the Architect/Engineer's design, structural support, manufacture, erection, approval, acceptance, operation, safety, maintenance, and all of its functions, characteristics, or appurtenances are not a part of the Architect/Engineer's work. Such functions are to be performed to obtain approval by the Owner for such purposes, or by Owner's personnel.

**Risk Disclaimer:**  
Quotes, estimates, or references to a possible "Rider" or "Rider" or use of any "Rider" terms such as "Rider" or "Rider" or use of any "Rider" terms, etc. on this drawing are for purpose of location, general identification, and sequencing only. Products, materials, and Vets, Inc., and all engineers or companies listed on this drawing hereby agree to refer to the Architect/Engineer's design, structural support, manufacture, erection, approval, acceptance, operation, safety, maintenance, and all of its functions, characteristics, or appurtenances are not a part of the Architect/Engineer's work. Such functions are to be performed to obtain approval by the Owner for such purposes, or by Owner's personnel.

REVISION NO.	DESCRIPTION	REVISION DATE
1	Revised 10	10/10/2020
A	Advised A	3/1/2020
F	Advised F	4/1/2021

**SeaWorld SAN DIEGO**

**2021 Attraction**  
San Diego, California

**ISSUE FOR BID / ISSUE FOR PERMIT**

ENLARGED STRUCTURAL SITE PLAN - EAST

DATE	March 12, 2020
DR	JJJ
OK	OSR
PGAV	64096.00
CLIENT	SEA
SHEET NUMBER	

**S02.303**

