

A

B

C

D

E

F

432

PANELBOARD SCHEDULE

PANEL 590A11A-63A (EXISTING) BLDG. 432 LOCATION RM. 1111 E. WALL

MFR. G.E. PANEL TYPE CCB BREAKER TYPE THEF, TFK VOLTS 480 AMPS 600

SUPPLY DISCONNECT CKT. 590A11A-63 LOCATION BLDG. 436 N.E. WALL SUBSTATION 590

BREAKER KAIC (MIN.) 25K

(OLD 590A11-25A)

DESCRIPTION

WIRE SIZE

BREAKER

CKT. NO.

CKT. NO.

BREAKER

WIRE SIZE

DESCRIPTION

T0548 150KVA

RM. 2022 W. WALL

4/0

200

3

4

200

4/0

PNL. 590A11A-63A-4

RM. 1000 W. WALL

432ACU02-2

RM. 2100 MEZZ

12

15

9

10

70

4

DISCONNECT SW.

RM. 1100

432PCHW01-2

OUTSIDE NORTH

12

15

15

16

15

12

WIRES SAFE END IN J-BOX

RM. 1300 S. WALL

SPARE

50

21

22

70

4

480V. 3-PH. RECEPT.

RM. 1113 S.E. WALL

480V. 3-PH. RECEPT.

RM. 1000 W. WALL

1

70

27

28

100

2

432FHE01

ROOF OVER RM. 1200;

L-650

MOORE LATHE

RM. 1000

12

20

33

34

20

12

L-658

MOORE LATHE

RM. 1000

PNL. 590A11A-63A-39

RM. 1204 N. WALL

4/0

225

39

40

125

1/0

432RCHSR01-2

OUTSIDE NORTH

BUS ENTRY

B

CONNECTED LOAD

ARC FLASH CATEGORY

FEEDER SIZE

REVISION SUBMITTED BY:

FDR. BREAKER

600

PHASE "A"

KW

2

WIRE 2 - #500MCM/PH THW

NFPA70E

DATE INST.

1970

PHASE "B"

KW

NEUT. NONE

J.O.W.T. 3585/PW 035 5200.53

LAST PM DATE:

2015

PHASE "C"

KW

COND. 1 - #4/0 B.C.

CAD REV. BY ML

CONDUIT 4" C.

CAD REV. DATE 6/10/15

1

432

PANELBOARD SCHEDULE

PANEL 590A11A-63A (EXISTING) BLDG. 432 LOCATION RM. 1111 E. WALL

MFR. G.E. PANEL TYPE CCB BREAKER TYPE THEF, TFK, TJK VOLTS 480 AMPS 600

SUPPLY DISCONNECT CKT. 590A11A-63 LOCATION BLDG. 436 N.E. WALL SUBSTATION 590

BREAKER KAIC (MIN.) 25K

(OLD 590A11-25A)

DESCRIPTION

WIRE SIZE

BREAKER

CKT. NO.

CKT. NO.

BREAKER

WIRE SIZE

DESCRIPTION

PNL. 590A11A-63A-45

RM. 1200

500

400

45

46

TJK

SPACE

ESPC. METER POWER

RM. 1111 E. WALL

12

15

57

58

SPACE

MAIN

(ALSO FEEDS 400A. 590A11A-63B MAIN)

2-500

600

63

64

TJK

SPACE

BUS ENTRY

B

CONNECTED LOAD

ARC FLASH CATEGORY

FEEDER SIZE

REVISION SUBMITTED BY:

FDR. BREAKER

600

PHASE "A"

KW

2

WIRE 2 - #500MCM/PH THW

NFPA70E

DATE INST.

1970

PHASE "B"

KW

NEUT. NONE

J.O.W.T. 3585/PW 035 5200.53

LAST PM DATE:

2015

PHASE "C"

KW

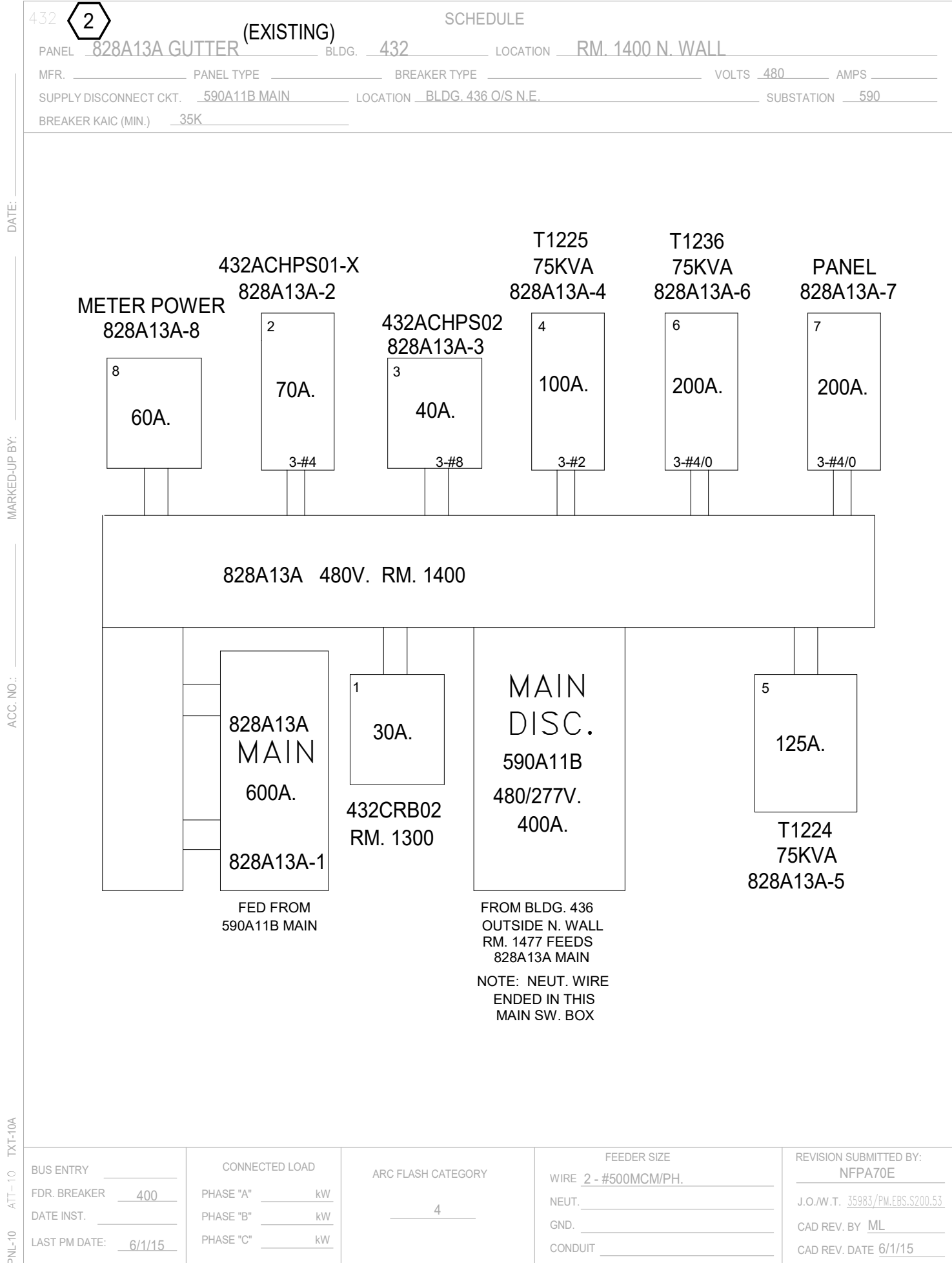
COND. 1 - #4/0 B.C.

CAD REV. BY ML

CONDUIT 4" C.

CAD REV. DATE 6/10/15

3



5

## GENERAL NOTES

1. FOR GENERAL NOTES, SYMBOLS, AND ABBREVIATIONS, REFER TO SHEET E-001.
2. UNLESS OTHERWISE NOTED, LIGHT LINEWEIGHT INDICATES EXISTING EQUIPMENT TO REMAIN AND HEAVY LINEWEIGHT INDICATES EQUIPMENT TO BE MODIFIED.
3. SUBCONTRACTORS MUST FIELD VERIFY LOCATION OF EXISTING EQUIPMENT AND EQUIPMENT TO BE INSTALLED.
4. SUBCONTRACTOR MUST FIELD VERIFY CIRCUITS INDICATED AND LOADS SERVED BY THEM.
5. SUBCONTRACTOR MUST UPDATE ALL MODIFIED PANELBOARD SCHEDULES.
6. PANEL SCHEDULES FOR AFFECTED PANELS ARE SHOWN. COORDINATE EQUIPMENT SHUTDOWN WITH CONSTRUCTION MANAGER / SUBCONTRACT TECHNICAL REPRESENTATIVE DURING CONSTRUCTION.
7. CONDUCTOR SPLICES ARE NOT ALLOWED WITHOUT LEAD ELECTRICAL ENGINEER APPROVAL

## # KEYED NOTES

1. DISCONNECT AND REMOVE EXISTING LOAD IN EXISTING PANEL. SPLICE CONDUCTORS AND REFEED TO SERVE EXISTING 432FHE01 LOAD. PROVIDE NEW CONDUCTORS TO FEED NEW 432ACU01 LOAD FROM NEW PANEL 590A11B. SPLICES MUST BE APPROVED
2. DEMOLISH EXISTING GUTTER AND REPLACE WITH 480V-3PH-3W PANELBOARD. PROVIDE NEW CONDUCTORS TO RE-FEED EXISTING EQUIPMENT. EXISTING CONDUIT MUST REMAIN AND TO BE REUSED FOR NEW WORK. SPLICE EXISTING 432CRB02 LOAD AND RECONNECT TO NEW PANELBOARD. SPLICE MUST OCCUR IN SPLICE BOX. SPLICES MUST BE APPROVED

Sheet Title

ELECTRICAL PANEL  
SCHEDULES

Dwg. No.

PLE2021-0432-0014D

Sht. No.

E-801

1

2

3

4

5

6

7

8