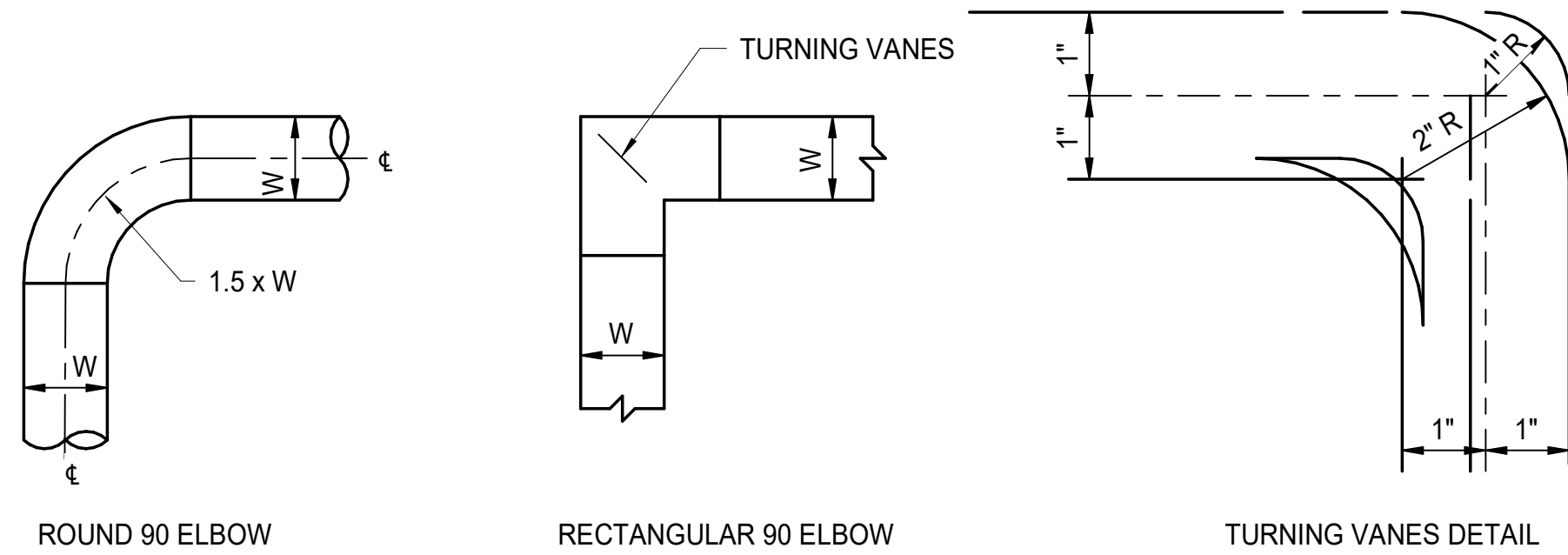


NOTES:

1. TAKEOFF ON BOTH SIDES OR SINGLE SIDE AS REQUIRED BY PLANS.
2. SEE SMACNA MANUAL FOR TAP-IN DETAILS.
3. WHEN FITTING HAS ONLY ONE SIDE SLOPED FOR A SINGLE SIDE TAKE-OFF, THE TAP-IN MUST BE INSTALLED IN SLOPED SIDE.
4. CLINCH LOCK CONNECTION TO DUCT MUST HAVE CORNER SEALS. (SEE SMACNA MANUAL).
5. EXTRACTORS, SCOOPS, DEFLECTORS OR DAMPERS THAT PROTRUDE INTO THE MAIN DUCT MUST NOT BE USED. BALANCING DAMPERS MUST BE LOCATED TO PREVENT PROTRUSION INTO THE MAIN DUCT AND TO FURNISH AND INSTALL STABLE AIR FLOW AND MINIMAL NOISE WHEN ADJUSTED.

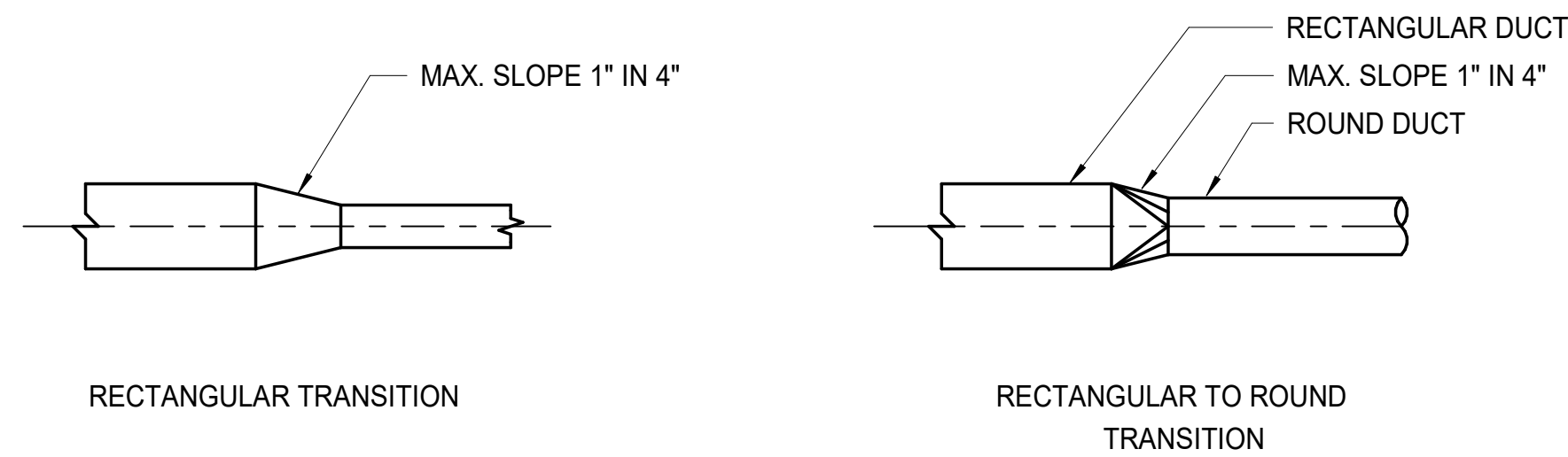
C1 BRANCH DUCT TAKE-OFF

M-501 SCALE: NO SCALE SHOWN



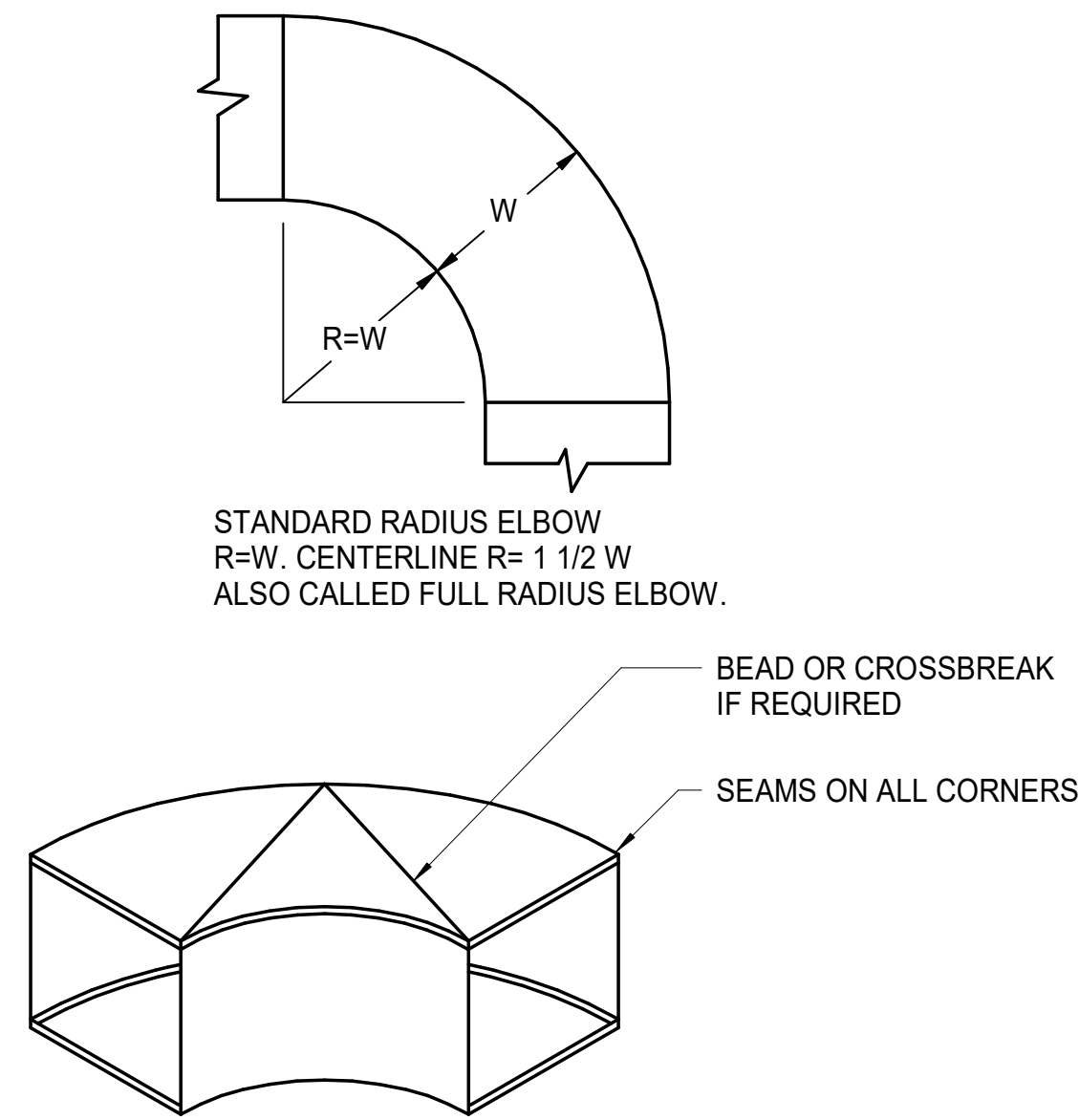
NOTE:

1. USE THIS DESIGN WHERE SQUARE 90°ELBOWS ARE SHOWN ON DRAWINGS OR IF SPACE DOES NOT PERMIT ROUND 90° ELBOWS.



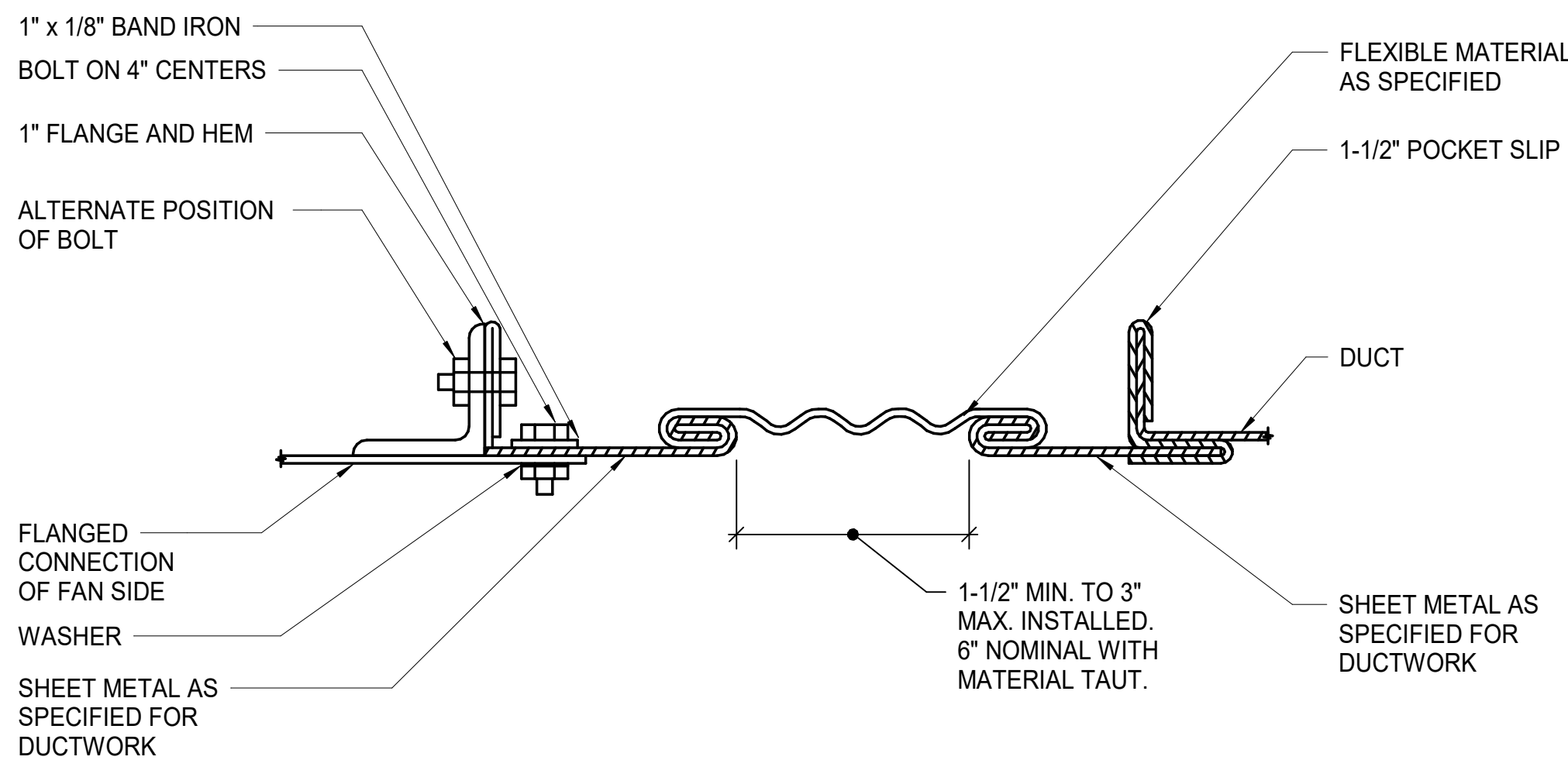
C3 LOW VELOCITY DUCT LAYOUT

M-501 SCALE: NO SCALE SHOWN



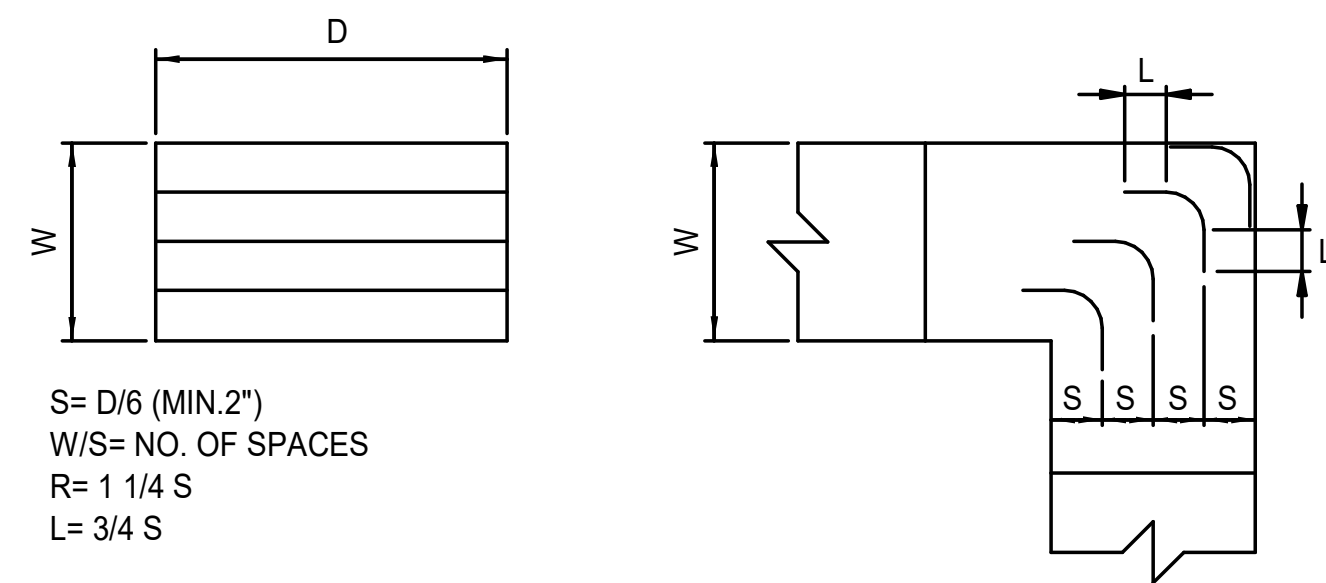
C7 STANDARD RADIUS ELBOW AIR DUCT

M-501 SCALE: NO SCALE SHOWN

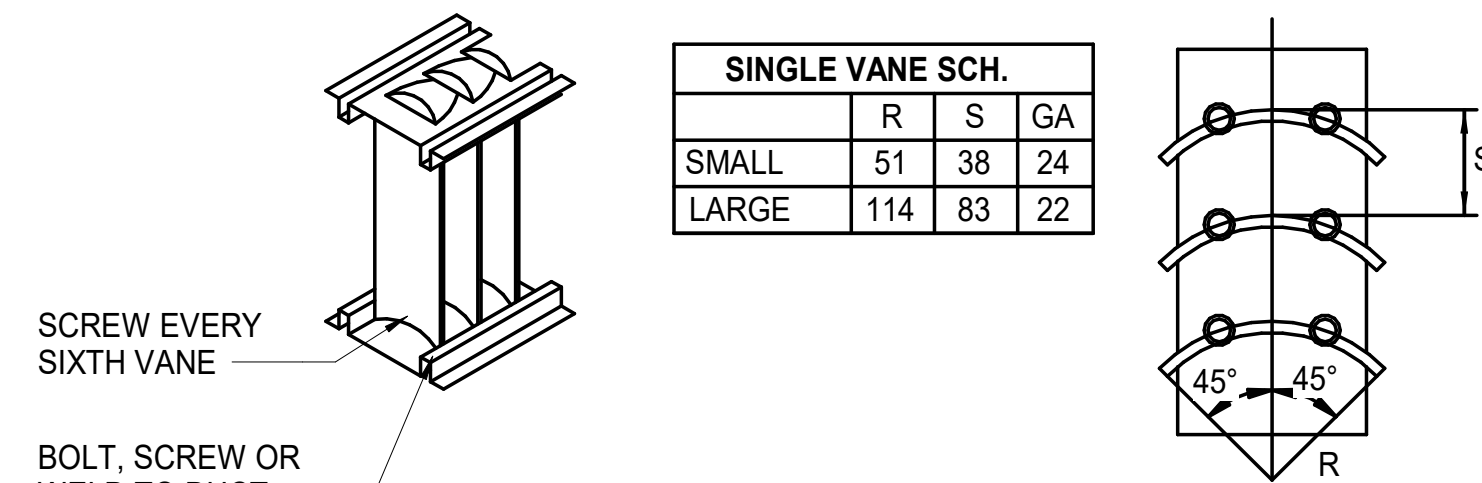


F3 RECTANGULAR FLEXIBLE CONNECTION

M-501 SCALE: NO SCALE SHOWN



SINGLE VANE SCH.			
	R	S	GA
SMALL	51	38	24
LARGE	114	83	22



F6 RECTANGULAR DUCT ELBOW TURNING VANES

M-501 SCALE: NO SCALE SHOWN

Sheet Title
MECHANICAL DETAILS

Dwg. No.
PLM2021-0432-0023D

Sht. No.
M-501