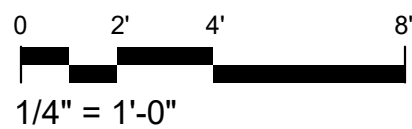


- NOTES:**
- 1 WORK PLANE (48" AFF)
 - 2 CENTER OF AIRFLOW PATH
 - 3 INSTALLATION ANGLE FROM PLUMB. REFER TO DRG SCHEDULE.
 - 4 DIFFUSER DEFLECTION ANGLE. REFER TO DRG SCHEDULE.
 - 5 EXISTING LIGHTING TO REMAIN.
 - 6 MOUNT DIFFUSER ON DUCTWORK AT ANGLE SCHEDULED. CONSTRUCT DUCT TAP TO ACCOMMODATE DUCT-MOUNTED VOLUME DAMPER AND TO ACCOMMODATE INSTALLATION OF BASIS OF DESIGN DIFFUSER. SUPPORT DIFFUSER TAKEOFFS WITH DEDICATED STRAP HANGER SUPPORTS AS NECESSARY TO PREVENT SAG.

E1 TYPICAL DIFFUSER INSTALLATION - HIGH BAY

M-507 SCALE: 1/4" = 1'-0"

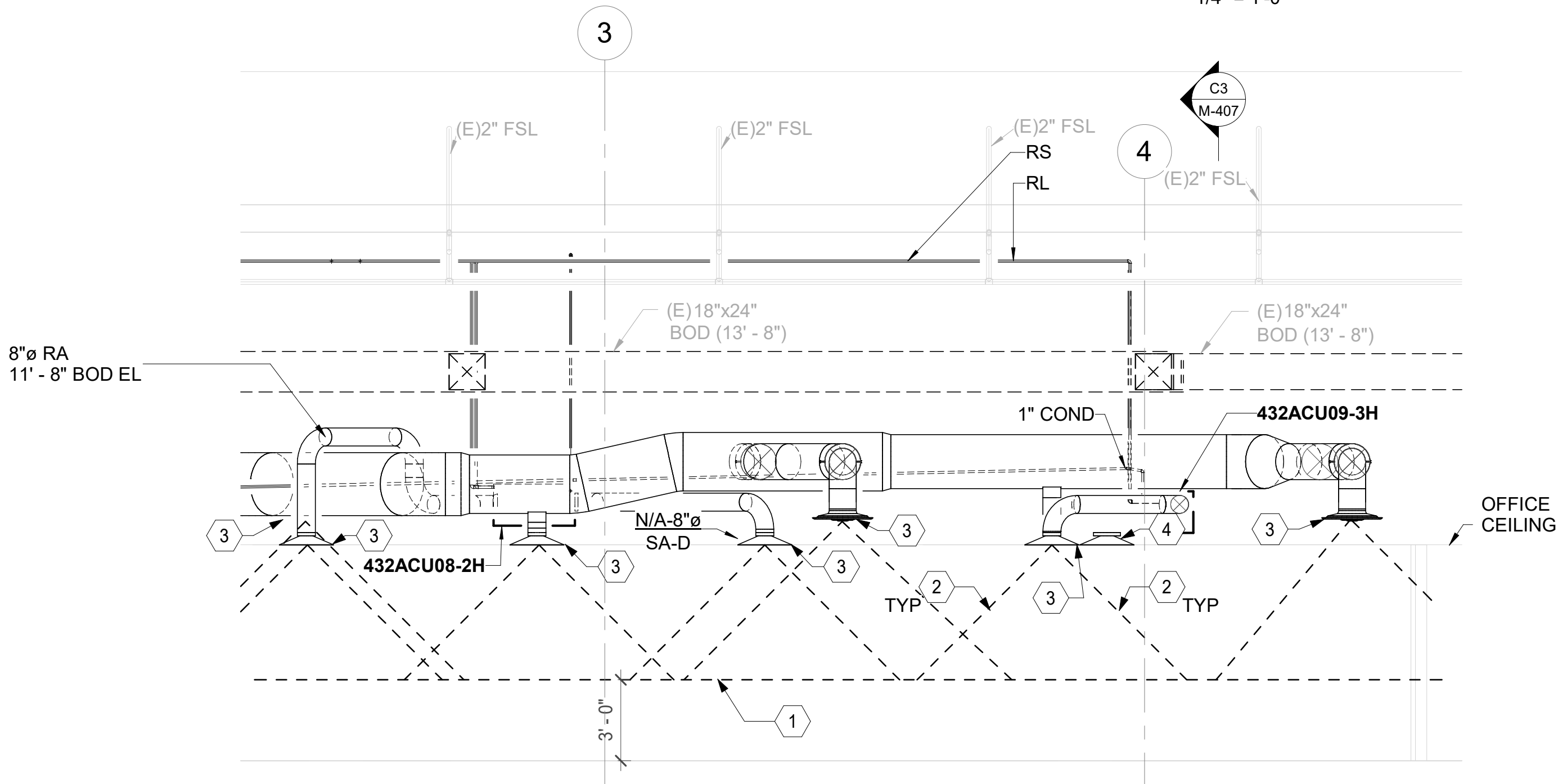
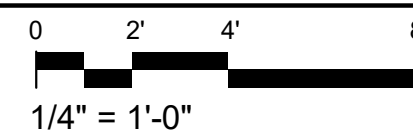


NOTES:

- 1 WORK PLANE (36" AFF)
- 2 CENTER OF AIRFLOW PATH
- 3 INSTALLATION ANGLE FROM PLUMB. REFER TO DRG SCHEDULE.
- 4 DIFFUSER DEFLECTION ANGLE. REFER TO DRG SCHEDULE.
- 5 EXISTING LIGHTING TO REMAIN.
- 6 MOUNT DIFFUSER ON DUCTWORK AT ANGLE SCHEDULED. CONSTRUCT DUCT TAP TO ACCOMMODATE DUCT-MOUNTED VOLUME DAMPER AND TO ACCOMMODATE INSTALLATION OF BASIS OF DESIGN DIFFUSER. USE LOW-LOSS 45DEG.TAPS. SUPPORT DIFFUSER TAKEOFFS WITH DEDICATED STRAP HANGER SUPPORTS AS NECESSARY TO PREVENT SAG.
- 7 BASIS OF DESIGN DIFFUSERS ARE SELECTED TO PRODUCE MAXIMUM VELOCITY OF 50FPM AT WORK PLANE WITH BLADE DEFLECTION SCHEDULED. REFER TO DRG SCHEDULE.

C5 TYPICAL DIFFUSER INSTALLATION - OPTICS LAB

M-507 SCALE: 1/4" = 1'-0"

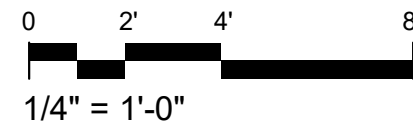


NOTES:

- 1 WORK PLANE (36" AFF)
- 2 CENTER OF AIRFLOW PATHS (4 WAY DRG)
- 3 MOUNT DIFFUSER ON DUCTWORK AT ANGLE SCHEDULED. DIFFUSERS MUST BE SIZED FOR THROWS FROM DUCT TO WORK PLANE AT NO GREATER THAN 100FPM. REFER TO DRG SCHEDULE.
- 4 HARD LID CEILING FOR ROOMS 2005 AND 2007 EXCLUSIVELY.

F5 TYPICAL DIFFUSER INSTALLATION - OFFICE

M-507 SCALE: 1/4" = 1'-0"



Sheet Title

MECHANICAL DETAILS

Dwg. No.

PLM2021-0432-0029D

Sht. No.

M-507