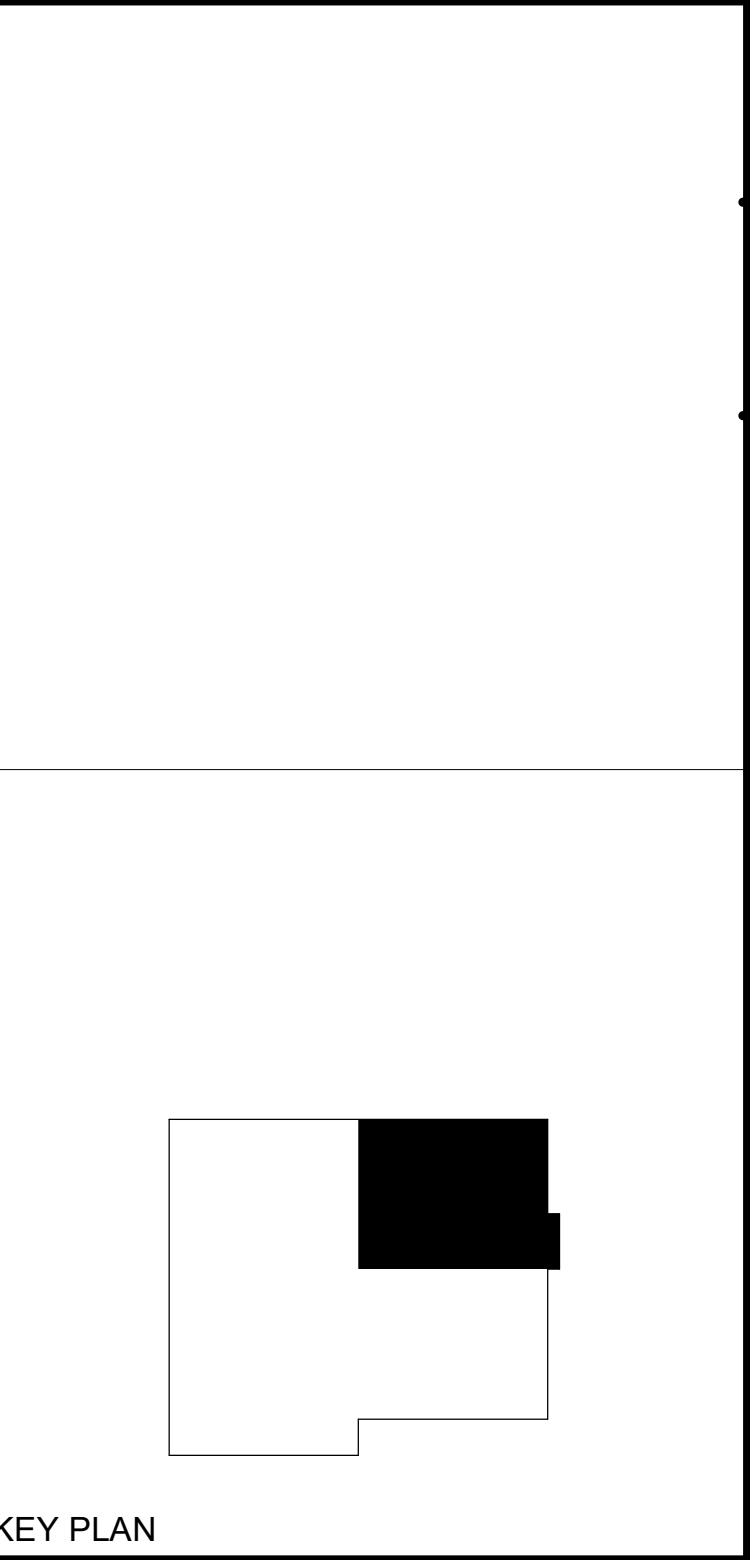


GENERAL NOTES

1. REFER TO M-001 FOR MECHANICAL ABBREVIATIONS, LEGEND, SYMBOLS, AND GENERAL NOTES.
2. COMPONENTS SHOWN DASHED ON THIS DRAWING ARE ITEMS TO BE DEMOLISHED; HALF-TONE COMPONENTS ARE EXISTING-TO-REMAIN.
3. PRIOR TO ANY DEMOLITION ACTIVITIES, SUBCONTRACTOR MUST COORDINATE WITH THE STR TO REVIEW FACILITY ES&H DOCUMENTS, EQUIPMENT TO BE REMOVED, MATERIALS TO BE REMOVED OR DISTURBED, AND IDENTIFY A PLAN PRIOR TO COMMENCING THE WORK. ITEMS TO REVIEW INCLUDE BUT ARE NOT LIMITED TO THE FOLLOWING: NEW WORK IN DISTURBING EXISTING WALLS, FLOORS, ROOFS, OR CEILINGS; ALL CUTTING OR DRILLING; ALL DEMOLITION; REMOVAL AND DISPOSAL.
4. CUT, REMOVE, AND LEGALLY DISPOSE OF ALL MECHANICAL ITEMS SELECTED FOR DEMOLITION AND ANY MECHANICAL ITEMS MADE OBSOLETE BY THE NEW WORK, INCLUDING EXISTING EQUIPMENT/PIPE/TUBE SUPPORTS AND HANGERS.

KEYED NOTES

- 1 REMOVE AND DISPOSE OF EXHAUST FAN, EXTERIOR INTAKE DUCTWORK TO WALL PENETRATION (MINIMUM OF 25FT, 18" DIAMETER), EXTERIOR VERTICAL DISCHARGE DUCTWORK TO ROOF (MINIMUM OF 40FT, 18" DIAMETER), SUPPORTS, ANCHORAGE, AND ALL APPURTENANCES. RETAIN EXISTING CONCRETE PAD.
- 2 REMOVE AND DISPOSE OF EXISTING GRILLE PENETRATION THROUGH WALL, INFILL WALL, PENETRATION AND SEAL PER ARCHITECTURAL DRAWINGS AND SPECIFICATIONS. REFER TO A-501.
- 3 REMOVE AND DISPOSE OF EXISTING RETURN AIR DUCTWORK TO SECOND FLOOR INCLUDING: AIR TERMINALS, SUPPORTS, ANCHORAGE, AND APPURTENANCES.



KEY PLAN

Sheet Title

MECHANICAL ENLARGED 1ST FLOOR NORTHEAST DEMOLITION PLAN - DUCTWORK

Dwg. No.

PLM2021-0432-0007D

Sht. No.

MD402