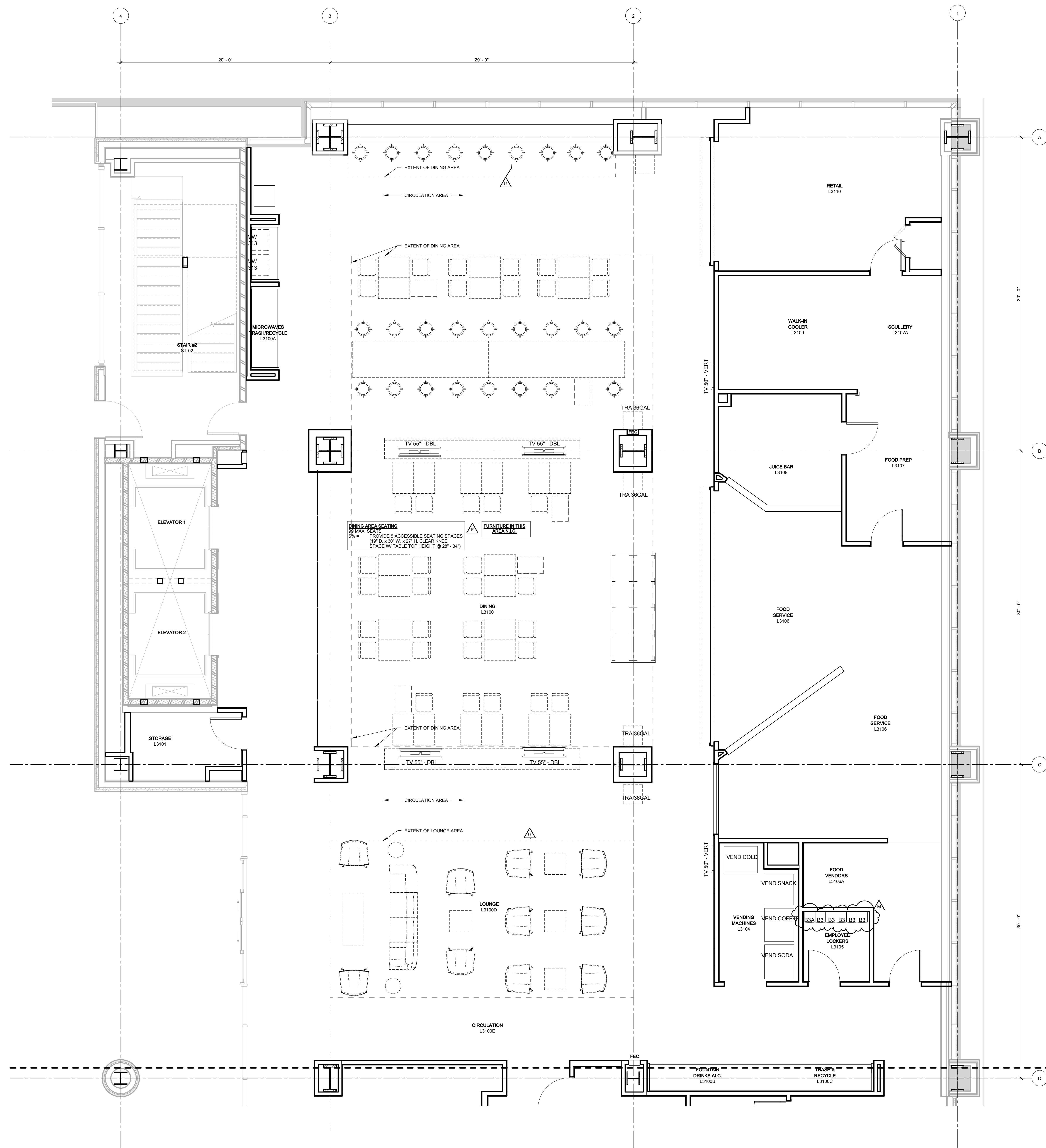
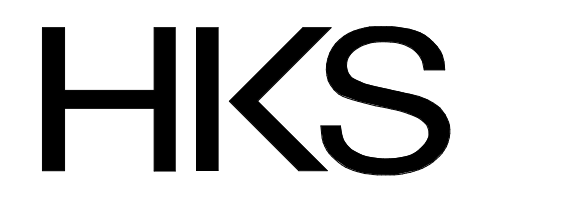


PLOT DATE: 5/12/2015 12:12 PM TEMPLATE VERSION: 214-20150621



- EQUIPMENT PLAN GENERAL NOTES**
1. SCREENED COMPONENTS IN THIS FLOOR PLAN ARE DOCUMENTED IN SHELL AND CORE PACKAGE.
  2. DASHED ITEMS INDICATE EQUIPMENT NOT FIXED TO WALL OR FLOOR.
  3. FURNITURE SHOWN FOR REFERENCE ONLY; NOT IN CONTRACT.
  4. REFER TO 18" A-200 SERIES PLANS FOR WALL TAGS, DIMENSIONS, AND OTHER ITEMS SHOWN BUT NOT NOTED.
  5. REFER TO SPECIFICATIONS FOR EQUIPMENT SCHEDULE.
  6. REFER TO SHEET SERIES TA-210 FOR REFLECTED CEILING PLANS.
  7. REFER TO SHEET SERIES TA-660 FOR INTERIOR ELEVATIONS.
  8. REFER TO SHEET TA-630 FOR TYPICAL TOILET LAYOUTS AND TOILET ACCESSORY MOUNTING DIAGRAMS.
  9. REFER TO SHEET TA-670 FOR INTERIOR TOILET ELEVATIONS.
  10. REFER TO SHEET TA-681 FOR MILLWORK ENLARGED PLANS.
  11. REFER TO TA-650 FOR CASEWORK/MILLWORK DETAILS AND INFORMATION.
  12. PROVIDE 18 GA BLOCKING AT ALL CASEWORK LOCATIONS. SEE TA-610 FOR PARTITION HEAD AND FRAMING DETAILS.
  13. REFER TO TA-631 FOR LOCKER TYPE SCHEDULE.
  14. REFER TO SHEET TA-641 FOR BORROWED LITE SCHEDULE.
  15. REFER TO SHEET TA-630 FOR EQUIPMENT MOUNTING HEIGHTS AND DETAILS REFERENCES.

- EQUIPMENT PLAN KEY NOTES**
- T MEDICAL GAS ZONE VALVE BOX



**ARCHITECT**  
HKS ARCHITECTS, INC.  
10880 WILSHIRE BLVD, SUITE 1600  
LOS ANGELES, CA 90024

**STRUCTURAL ENGINEER**  
TMAO TAYLOR & GAINES  
300 N. LAKE AVENUE, 14TH FLOOR  
PASADENA, CA 91101

**MEP ENGINEER**  
TMAO TAYLOR & GAINES  
300 N. LAKE AVENUE, 14TH FLOOR  
PASADENA, CA 91101

**CIVIL ENGINEER**  
KPF CONSULTING ENGINEERS  
6080 CENTER DRIVE, STE. 700  
LOS ANGELES, CA 90045

**LANDSCAPE ARCHITECT**  
FONG HART SCHNEIDER - PARTNERS  
31742 COAST HIGHWAY  
LAGUNA BEACH, CA 92651

**ACOUSTICAL ENGINEER**  
NEWSON BROWN ACOUSTICS LLC  
2001 WILSHIRE BOULEVARD, SUITE 301  
SANTA MONICA, CA 90403

**CODE**  
ROLF JENSEN & ASSOCIATES, INC.  
2099 SOUTH STATE COLLEGE BLVD., SUITE 380  
ANAHEIM, CA 92806

**HEALTHCARE TECHNOLOGY**  
GBA  
1853 GENERAL GEORGE PATTON DR.  
FRANKLIN, TN 37067

**SECURITY**  
TRC  
123 TECHNOLOGY DRIVE  
IRVINE, CA 92618

**FOOD SERVICES**  
R.W. SMITH & CO.  
3186-A AIRWAY AVE.  
COSTA MESA, CA 92626



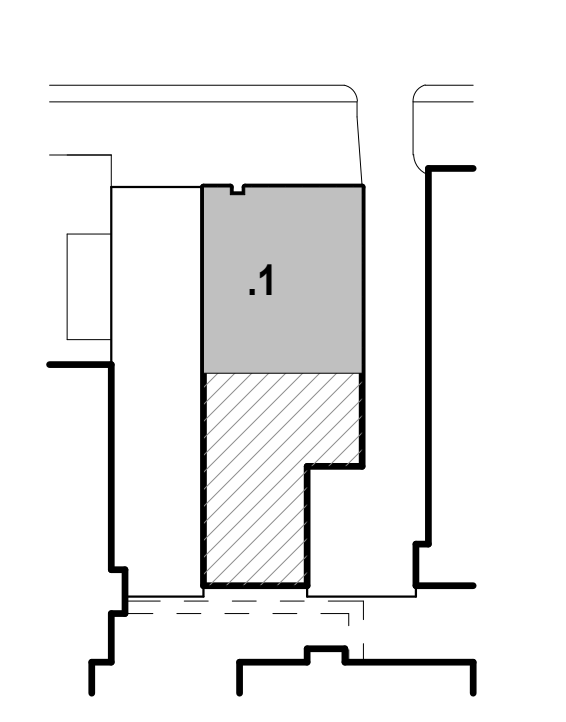
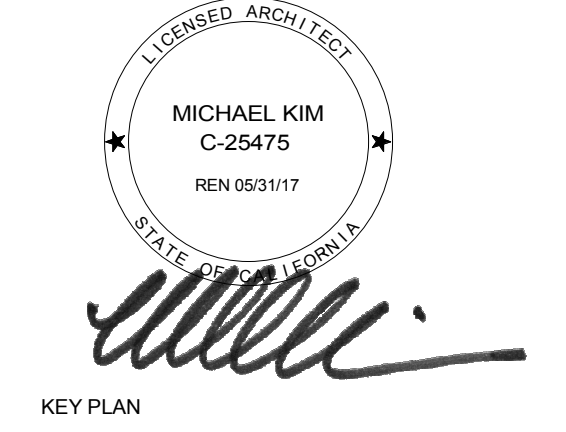
**HEALTH SCIENCES CAMPUS**

**Norris Healthcare Consultation Center**

**TENANT IMPROVEMENT**

**2204 E Alcazar Street, Los Angeles, CA 90033**

**OWNER**  
UNIVERSITY OF SOUTHERN CALIFORNIA  
2001 N. SOTO STREET, SBA #329  
LOS ANGELES, CA 90032



REVISION NO.	DESCRIPTION	DATE
F	Delta F	06/30/2015
G	Delta G	11/4/2015
M	DELTA M	Date 13

HKS PROJECT NUMBER  
**15002.200**

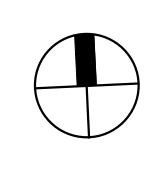
DATE

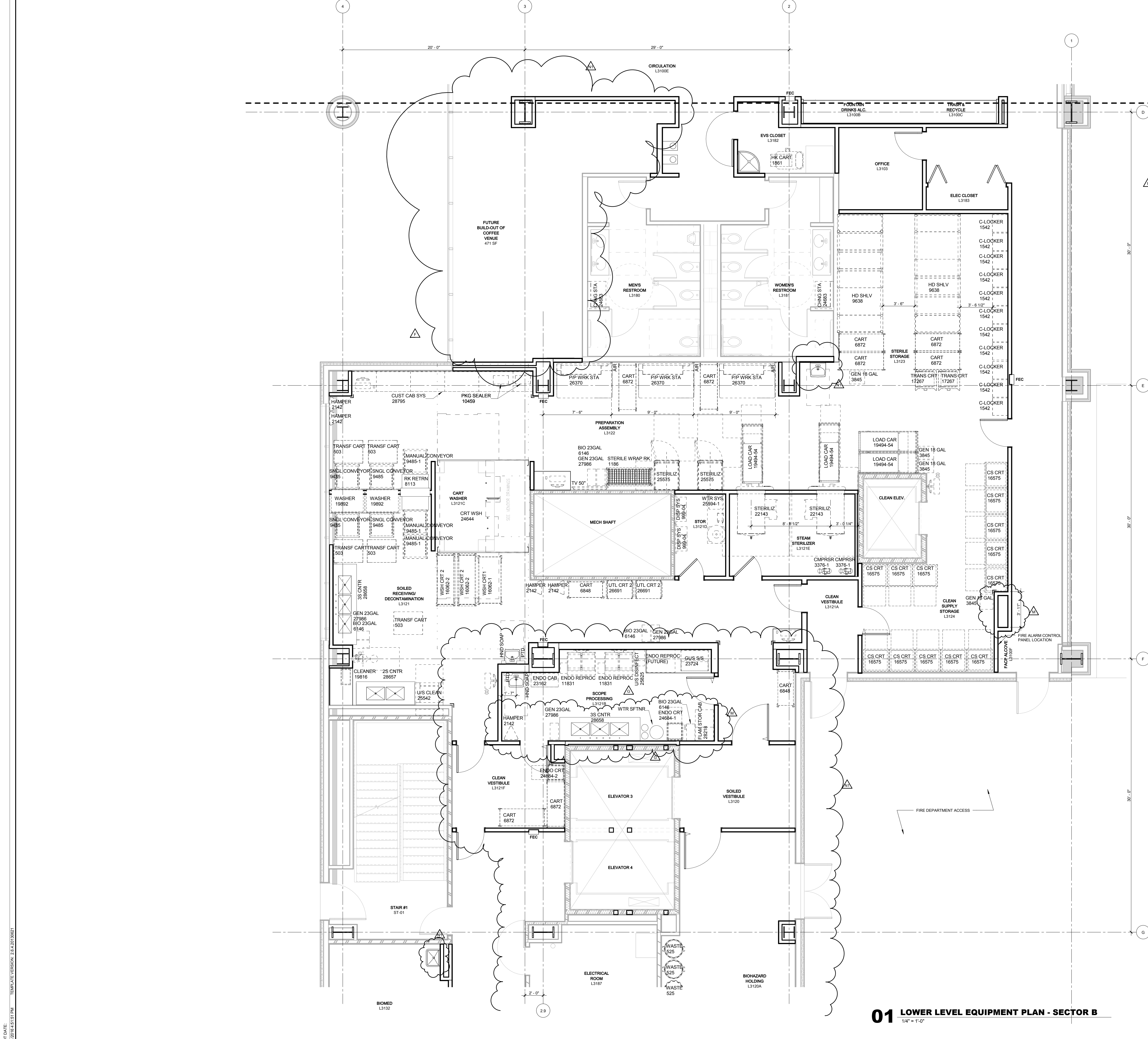
ISSUE

SHEET TITLE  
**EQUIPMENT - LOWER LEVEL PLAN - NORTH**

SHEET NO.  
**TQ-220.1LL**

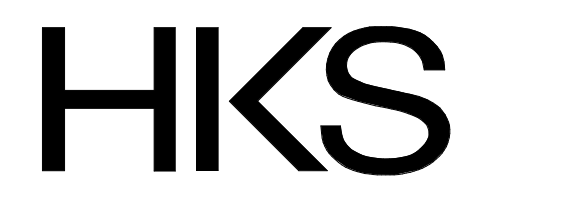
**01 LOWER LEVEL EQUIPMENT PLAN - SECTOR A**  
1/4" = 1'-0"





- EQUIPMENT PLAN GENERAL NOTES**
1. SCREENED COMPONENTS IN THIS FLOOR PLAN ARE DOCUMENTED IN SHELL AND CORE PACKAGE.
  2. DASHED ITEMS INDICATE EQUIPMENT NOT FIXED TO WALL OR FLOOR.
  3. FURNITURE SHOWN FOR REFERENCE ONLY, NOT IN CONTRACT.
  4. REFER TO 18" A-200 SERIES PLANS FOR WALL TAGS, DIMENSIONS, AND OTHER ITEMS SHOWN BUT NOT NOTED.
  5. REFER TO SPECIFICATIONS FOR EQUIPMENT SCHEDULE.
  6. REFER TO SHEET SERIES TA-210 FOR REFLECTED CEILING PLANS.
  7. REFER TO SHEET SERIES TA-660 FOR INTERIOR ELEVATIONS.
  8. REFER TO SHEET TA-630 FOR TYPICAL TOILET LAYOUTS AND TOILET ACCESSORY MOUNTING DIAGRAMS.
  9. REFER TO SHEET TA-670 FOR INTERIOR TOILET ELEVATIONS.
  10. REFER TO SHEET TA-681 FOR MILLWORK ENLARGED PLANS.
  11. REFER TO TA-650 FOR CASEWORK/MILLWORK DETAILS AND INFORMATION.
  12. PROVIDE 18 GA BLOCKING AT ALL CASEWORK LOCATIONS. SEE TA-610 FOR PARTITION HEAD AND FRAMING DETAILS.
  13. REFER TO TA-631 FOR LOCKER TYPE SCHEDULE.
  14. REFER TO SHEET TA-641 FOR BORROWED LITE SCHEDULE.
  15. REFER TO SHEET TA-630 FOR EQUIPMENT MOUNTING HEIGHTS AND DETAILS REFERENCES.

- EQUIPMENT PLAN KEY NOTES**
- 1. MEDICAL GAS ZONE VALVE BOX



**ARCHITECT**  
HKS ARCHITECTS, INC.  
10880 WILSHIRE BLVD, SUITE 1650  
LOS ANGELES, CA 90024

**STRUCTURAL ENGINEER**  
T.MAD TAYLOR & GAINES  
300 N. LAKE AVENUE, 14TH FLOOR  
PASADENA, CA 91101

**MEP ENGINEER**  
T.MAD TAYLOR & GAINES  
300 N. LAKE AVENUE, 14TH FLOOR  
PASADENA, CA 91101

**CIVIL ENGINEER**  
KPFF CONSULTING ENGINEERS  
6080 CENTER DRIVE, STE. 700  
LOS ANGELES, CA 90045

**LANDSCAPE ARCHITECT**  
FONG HART SCHNEIDER - PARTNERS  
31742 COAST HIGHWAY  
LAGUNA BEACH, CA 92651

**ACOUSTICAL ENGINEER**  
NEWSON BROWN ACOUSTICS LLC  
2001 WILSHIRE BOULEVARD, SUITE 301  
SANTA MONICA, CA 90403

**CODE**  
ROLF JENSEN & ASSOCIATES, INC.  
2099 SOUTH STATE COLLEGE BLVD., SUITE 380  
ANAHEIM, CA 92806

**HEALTHCARE TECHNOLOGY**  
GBA  
1850 GENERAL GEORGE PATTON DR.  
FRANKLIN, TN 37067

**SECURITY**  
TRC  
123 TECHNOLOGY DRIVE  
IRVINE, CA 92618

**FOOD SERVICES**  
R.W. SMITH & CO.  
3186-A AIRWAY AVE.  
COSTA MESA, CA 92626



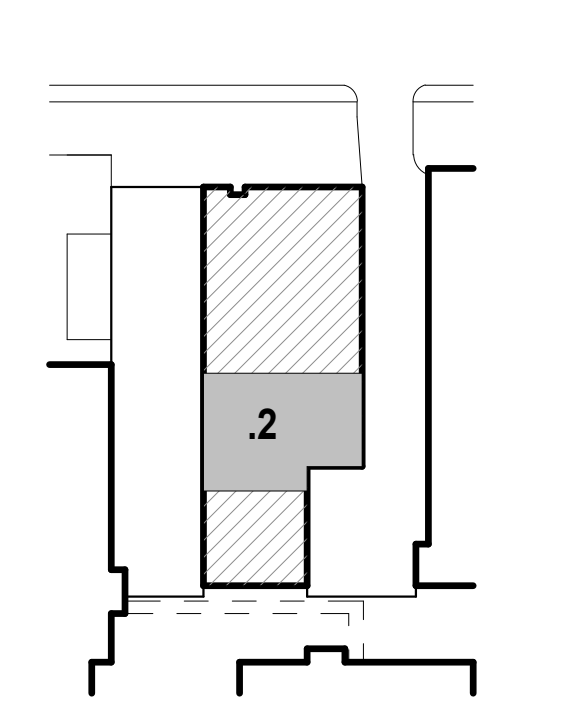
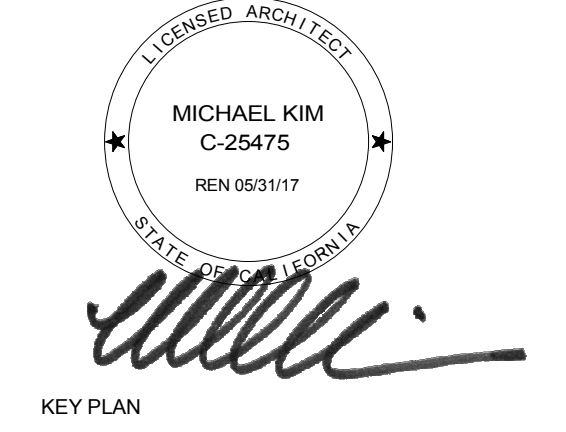
**HEALTH SCIENCES CAMPUS**

**Norris Healthcare Consultation Center**

**TENANT IMPROVEMENT**

**2204 E Alcazar Street, Los Angeles, CA 90033**

**OWNER**  
UNIVERSITY OF SOUTHERN CALIFORNIA  
2001 N. SOTO STREET, SBA #329  
LOS ANGELES, CA 90032



REVISION NO.	DESCRIPTION	DATE
F	Delta F	06/30/2015
G	Delta G	11/4/2015
NI	Delta NI	02/26/2016
M	DELTA M	DATE 13

HKS PROJECT NUMBER  
**15002.200**

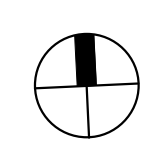
DATE

ISSUE

SHEET TITLE  
**EQUIPMENT - LOWER LEVEL PLAN - CENTER**

SHEET NO.

**01 LOWER LEVEL EQUIPMENT PLAN - SECTOR B**  
1/4" = 1'-0"



**ARCHITECT**  
 HKS ARCHITECTS, INC.  
 10885 WILSHIRE BLVD., SUITE 1600  
 LOS ANGELES, CA 90024

**STRUCTURAL ENGINEER**  
 TMOAD TAYLOR & GAINES  
 300 N. LAKE AVENUE, 14TH FLOOR  
 PASADENA, CA 91101

**MEP ENGINEER**  
 TMOAD TAYLOR & GAINES  
 300 N. LAKE AVENUE, 14TH FLOOR  
 PASADENA, CA 91101

**CIVIL ENGINEER**  
 KPFF CONSULTING ENGINEERS  
 6080 CENTER DRIVE, STE. 700  
 LOS ANGELES, CA 90045

**LANDSCAPE ARCHITECT**  
 FONSG HART SCHNEIDER - PARTNERS  
 31742 COAST HIGHWAY  
 LAGUNA BEACH, CA 92651

**ACOUSTICAL ENGINEER**  
 NEWSON BROWN ACOUSTICS LLC  
 2001 WILSHIRE BOULEVARD, SUITE 301  
 SANTA MONICA, CA 90403

**CODE**  
 ROLF JENSEN & ASSOCIATES, INC.  
 2099 SOUTH STATE COLLEGE BLVD., SUITE 380  
 ANAHEIM, CA 92806

**HEALTHCARE TECHNOLOGY**  
 GBA  
 1850 GENERAL GEORGE PATTON DR.  
 FRANKLIN, TN 37067

**SECURITY**  
 TRC  
 123 TECHNOLOGY DRIVE  
 IRVINE, CA 92618

**FOOD SERVICES**  
 R.W. SMITH & CO.  
 3186-A AIRWAY AVE.  
 COSTA MESA, CA 92626



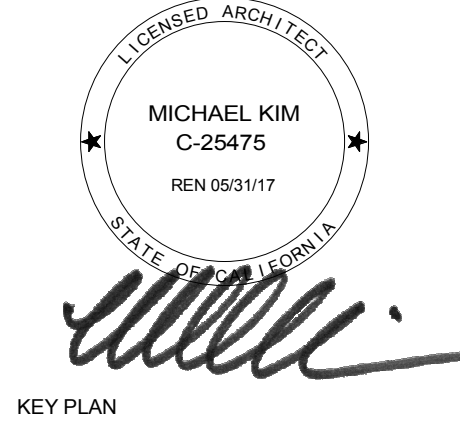
**HEALTH SCIENCES CAMPUS**

**Norris Healthcare Consultation Center**

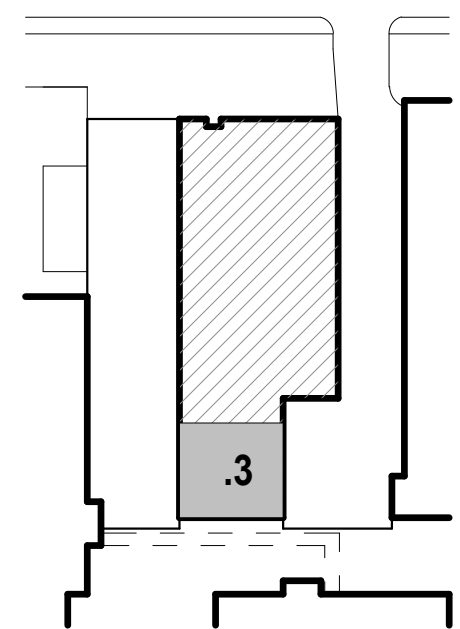
**TENANT IMPROVEMENT**

**2204 E Alcazar Street, Los Angeles, CA 90033**

**OWNER**  
 UNIVERSITY OF SOUTHERN CALIFORNIA  
 2001 N. SOTO STREET, SBA #329  
 LOS ANGELES, CA 90032



KEY PLAN



REVISION NO.	DESCRIPTION	DATE
F	Delta F	06/30/2015
N1	Delta N1	02/26/2016

HKS PROJECT NUMBER  
**15002.200**

DATE

ISSUE

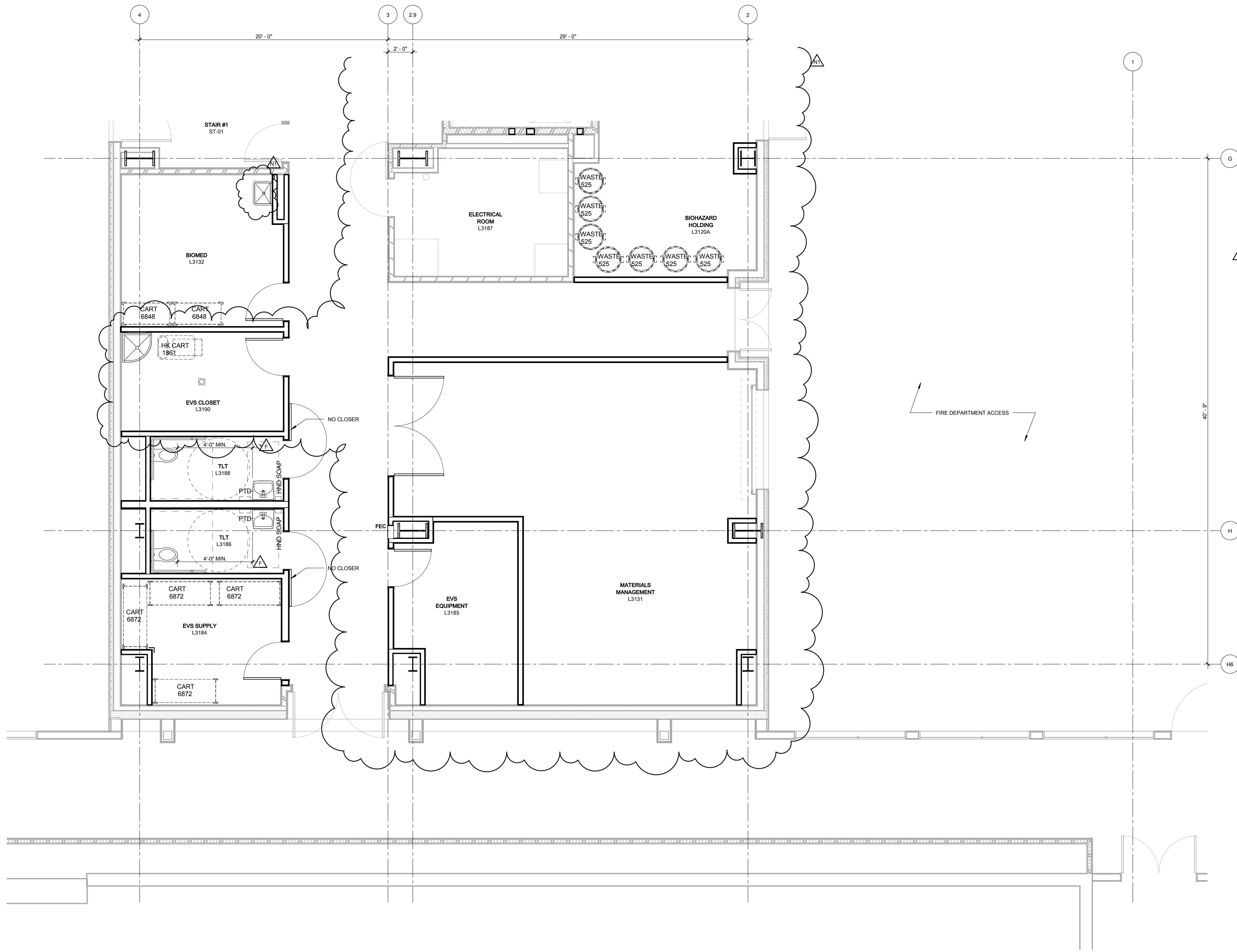
SHEET TITLE  
**EQUIPMENT - LOWER LEVEL PLAN - SOUTH**

SHEET NO.

**TQ-220.3LL**

- EQUIPMENT PLAN GENERAL NOTES**
- SCREENED COMPONENTS IN THIS FLOOR PLAN ARE DOCUMENTED IN SHELL AND CORE PACKAGE.
  - DASHED ITEMS INDICATE EQUIPMENT NOT FIXED TO WALL OR FLOOR.
  - FURNITURE SHOWN FOR REFERENCE ONLY. NOT IN CONTRACT.
  - REFER TO 1/8" A-200 SERIES PLANS FOR WALL TAGS, DIMENSIONS, AND OTHER ITEMS SHOWN BUT NOT NOTED.
  - REFER TO SPECIFICATIONS FOR EQUIPMENT SCHEDULE.
  - REFER TO SHEET SERIES TA-210 FOR REFLECTED CEILING PLANS.
  - REFER TO SHEET SERIES TA-660 FOR INTERIOR ELEVATIONS.
  - REFER TO SHEET TA-630 FOR TYPICAL TOILET LAYOUTS AND TOILET ACCESSORY MOUNTING DIAGRAMS.
  - REFER TO SHEET TA-670 FOR INTERIOR TOILET ELEVATIONS.
  - REFER TO SHEET TA-681 FOR MILLWORK ENLARGED PLANS.
  - REFER TO TA-650 FOR CASEWORK/MILLWORK DETAILS AND INFORMATION.
  - PROVIDE 1/8 GA BLOCKING AT ALL CASEWORK LOCATIONS. SEE TA-610 FOR PARTITION HEAD AND FRAMING DETAILS.
  - REFER TO TA-631 FOR LOCKER TYPE SCHEDULE.
  - REFER TO SHEET TA-641 FOR BORROWED LITE SCHEDULE.
  - REFER TO SHEET TA-630 FOR EQUIPMENT MOUNTING HEIGHTS AND DETAILS REFERENCES.

- EQUIPMENT PLAN KEY NOTES**
- 1 MEDICAL GAS ZONE VALVE BOX



**01 LOWER LEVEL EQUIPMENT PLAN - SECTOR C**

1/4" = 1'-0"

