

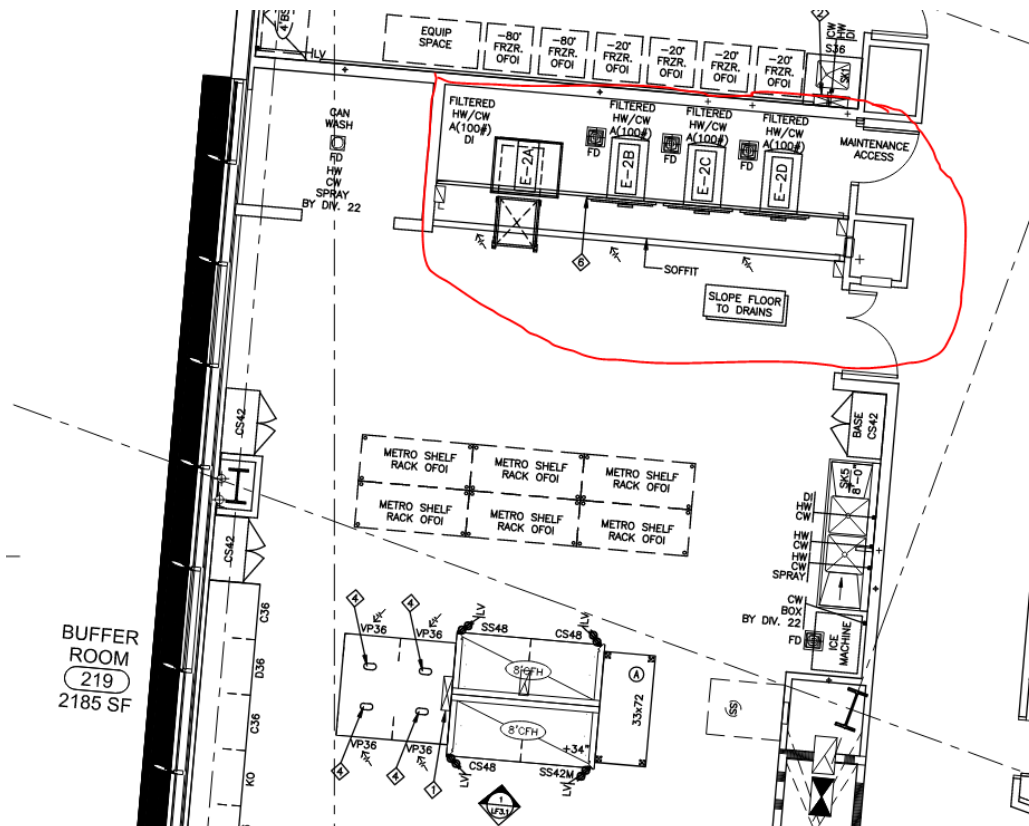


MODULE 06 –MINI PRESENTATION – Equipment Coordination

One of the many ways DPR determines the amount of risk involved in a project is a thorough review of the design documents. Identifying items with a lot of exposure early, helps us prioritize where and how to focus our attention. We pride ourselves on being a technical builder in the industry and as such, it is important to understand the building's mechanical, electrical, and plumbing (MEP) systems. MEP systems do not live in their own bubble, and often require coordination with architectural and structural elements of the project.

Life Science projects like Gene Theory often have intricate equipment that require extensive coordination among multiple trades (including those outside of MEP systems). One common piece of equipment that is often found on Life Science projects is an Autoclave. Autoclaves are units that clean and sanitize equipment so that scientists are able to conduct experiments without having to worry about introducing unwanted variables to their research. These are often also known as Sterilizers.

For this module, we are going to focus on the Autoclaves in “Buffer Room 219”, specific to the area circled below in red. We are asking for a thorough review of all trades who may have scope in the room, including those outside of the MEP systems, to ensure that we are covering all necessary requirements and not exposing ourselves to any potential scope gaps. The equipment that should be accounted for have the tags: E-2A, E-2B, E-2C, and E-2D.





OBJECTIVE: Develop and showcase the cross-disciplinary coordination that needs to occur to meet all the requirements for the installation and functionality of the Autoclave space in “Buffer Room 219”.

Deliverable A – Cross-Disciplinary Coordination Matrix and Mark-up

With the sheets provided for you in this folder, create a PDF mark up identifying all necessary coordination that needs to occur for the Autoclave space in “Buffer Room 219”. This should be all scopes, including but not limited to MEP connections, surrounding utilities (exhausts/drains/etc.), structural, flooring, anchorage/seismic, to name a few. Reference the provided “Example Mark-up” PDF for help with what is expected.

In addition to your PDF mark up, provide a summary matrix of the necessary coordination. The following items need to be included (template provided, submit as an excel file):

- Scope that is interacting with the Autoclaves
- Short description of the scope (ex. 120v power landed at disconnect)
- Which trade is responsible for providing
- Which trade is responsible for installing

Deliverable B – Equipment Coordination Mini Presentation

1. Two members from your team are to prepare a mini-presentation featuring a list of the scopes needing coordination and then highlight three items from your summary matrix that you feel could be easily missed by the team that is putting together the Inclusions and Exclusions. Remember, this is a mini-presentation, so be careful to not dive too far into any topics and only touch on the most critical pieces of information.
2. **The time of your mini-presentation will be given to you at 10AM via email and fall between the following range: 3:00 - 5:30PM (5-minute presentation & 5-minute Q&A). You will only be allowed into the Zoom during your time slot.**

Providing Deliverables

The following deliverables are due via email (asc.execteam.dpr@gmail.com) by 2:30PM