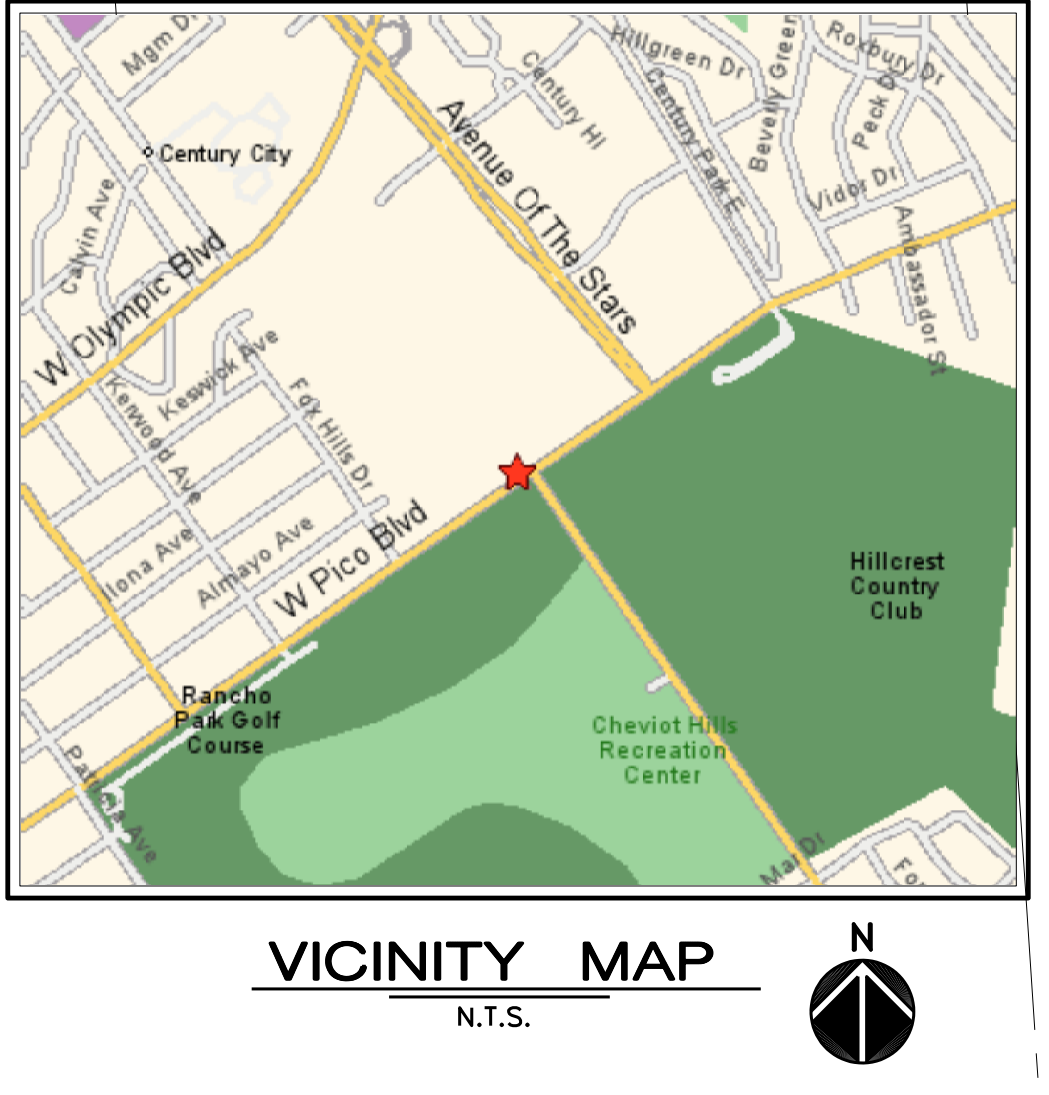
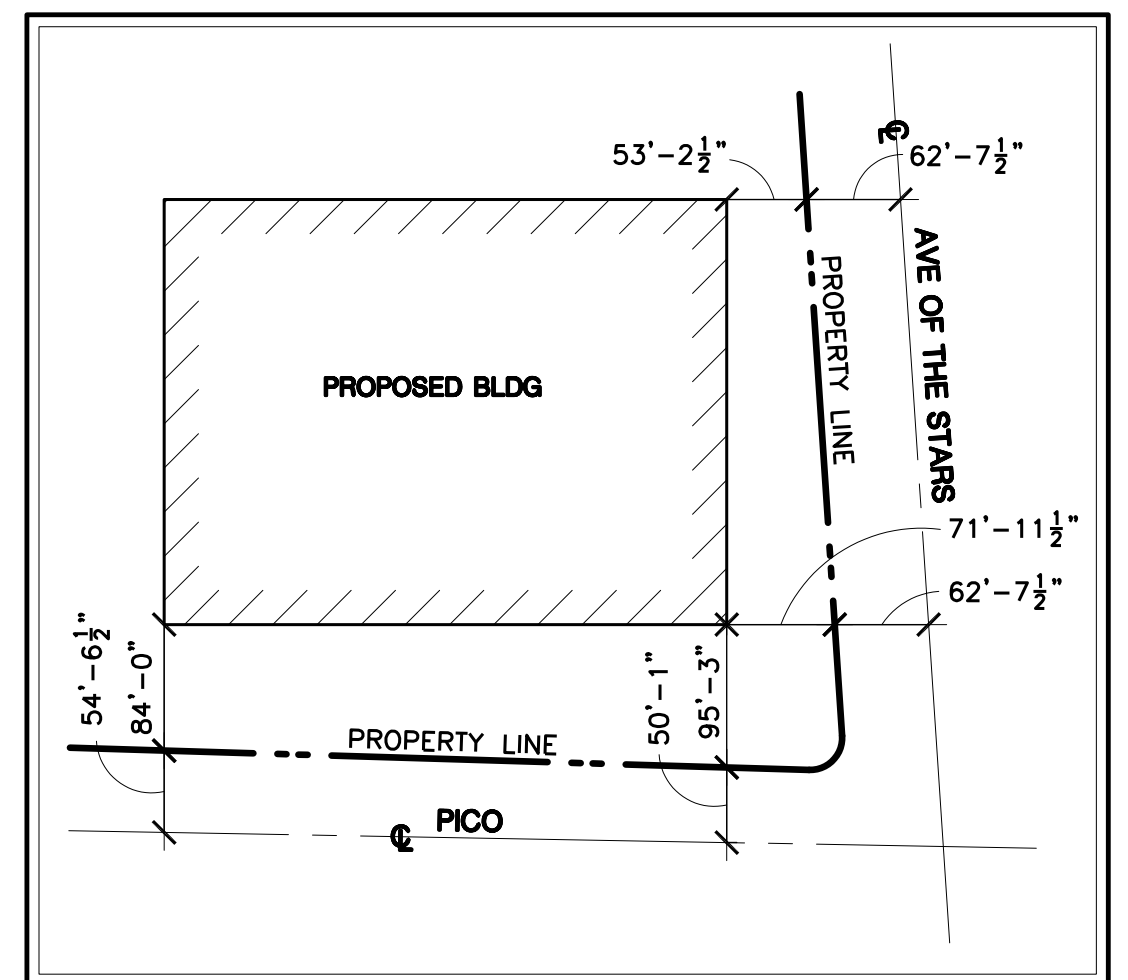
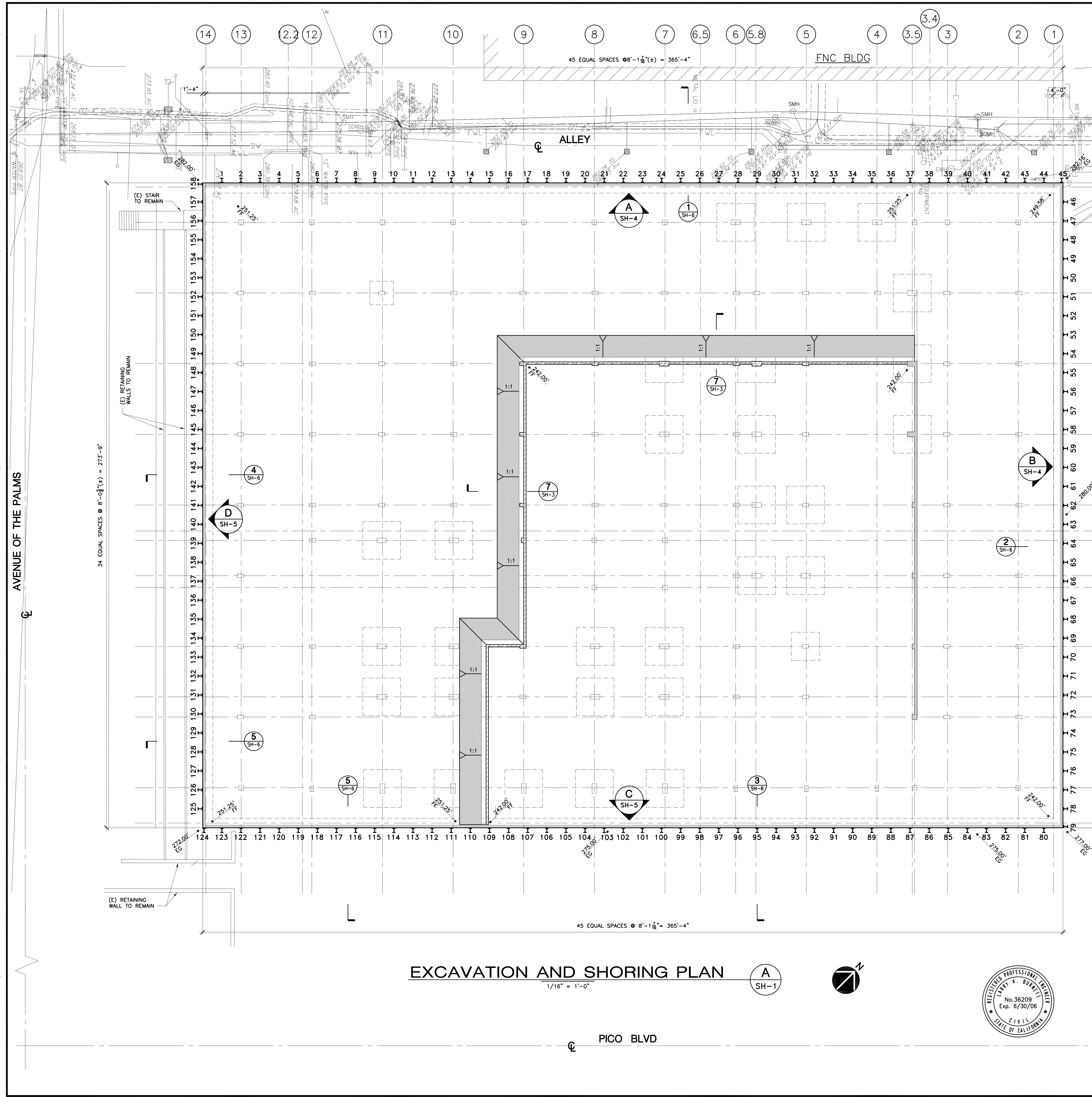


Scale bars for various drawing sections:

- 1 1/2" = 1' (0 to 12 feet)
- 1" = 1' (0 to 12 feet)
- 3/4" = 1' (0 to 12 feet)
- 1/2" = 1' (0 to 12 feet)
- 3/8" = 1' (0 to 12 feet)
- 1/4" = 1' (0 to 12 feet)
- 3/32" = 1' (0 to 12 feet)
- 1/8" = 1' (0 to 12 feet)
- 1/16" = 1' (0 to 12 feet)
- 1" = 10' (0 to 100 feet)
- 1" = 20' (0 to 200 feet)
- 1" = 30' (0 to 300 feet)
- 1" = 40' (0 to 400 feet)
- 1" = 50' (0 to 500 feet)



- ABBREVIATIONS**
- EG = EXISTING GRADE
  - FF = FINISH FLOOR
  - FW = FACE OF WALL
  - BF = BOTTOM OF FOOTING
  - TOP = TOP OF FOOTING
  - TOW = TOP OF WALL
  - FL = FLOW LINE
  - (E) = EXISTING
  - (N) = NEW
  - SB = SOLIDER BEAM
  - PL = PROPERTY LINE
  - SPS = SPACING

**LEGAL DESCRIPTION**  
IN THE CITY OF LOS ANGELES,  
STATE OF CALIFORNIA,  
LOT 1, TRACT 51502.

**OWNER**  
TWENTIETH CENTURY FOX FILM CORP.  
10201 PICO BLVD.  
LOS ANGELES, CA 90064  
PHONE:  
FAX:  
E-MAIL:  
CONTACT:

**OWNER AGENT**  
INVESTMENT DEVELOPMENT SERVICES, INC.  
515 S. FIGUEROA STREET, SUITE 1600  
LOS ANGELES, CA 90071  
PHONE: (213) 362-9309  
FAX: (213) 627-2138  
E-MAIL: BREGE@INVESTDEV.COM  
CONTACT: MR. BROOKE REGE

**GEOTECHNICAL**  
GEOTECHNOLOGIES, INC.  
439 WESTERN AVE.  
GLENDALE, CA 91201-2837  
PHONE: (818) 240-9600  
FAX: (818) 240-9675  
CONTACT: STANLEY TANG

**EARTHWORK QUANTITIES**

CUT	FILL
142,000 CY.	0.0 CY.

REVISIONS	BY

**BURNETT & YOUNG, Inc.**  
CONSULTANTS • ENGINEERS  
650 Sierra Madre Villa Ave., Suite 102  
Pasadena, CA 91107  
Phone: (626) 351-3357 • Fax: (626) 351-3247

**FOX ENTERTAINMENT GROUP**  
10201 WEST PICO BLVD  
LOS ANGELES, CA.

**EXCAVATION AND SHORING PLAN**

Date: 08/26/04  
Scale: 1/16" = 1'-0"  
Drawn: JT  
Checked: LAB  
Job No. 04-0430

Sheet: **SH-1**  
Of 6 Sheets

