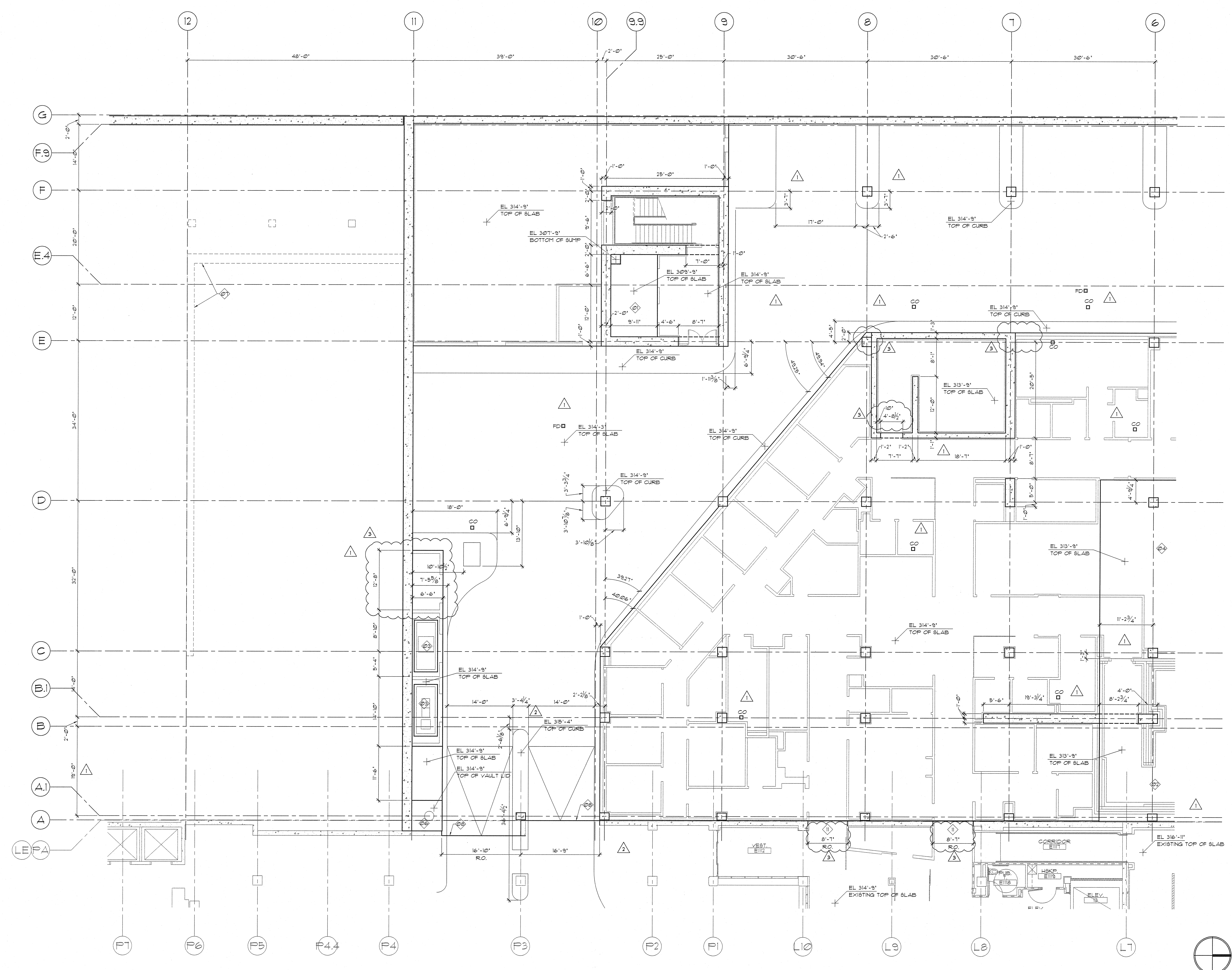
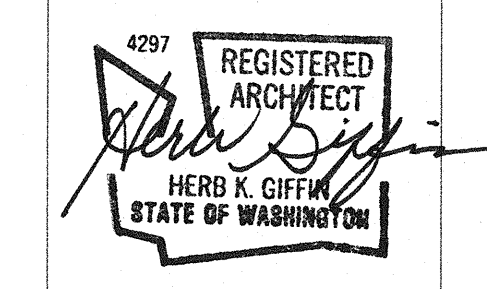


A
B
C
D
E



- KEY PLAN**
- GENERAL NOTES**
- A. CONTRACTOR TO VERIFY EXTENT OF VAPOR EMISSION REDUCER PRIOR TO SLAB POUR. SEE SECTION 03 35 10.
- KEY NOTES**
1. VERIFY REQUIRED PIT DIMENSION WITH REQUIREMENTS OF ELEVATORS PROVIDED PRIOR TO LAYOUT OF STRUCTURAL SLAB.
2. AREA TO RECEIVE SECONDARY SLAB WITHIN RADIATION THERAPY VAULT. COORDINATE LOCATION OF IN-FLOOR RACEWAYS AND ROUTING OF SERVICES WITH EQUIPMENT VENDOR'S REQUIREMENTS PRIOR TO POURING SECONDARY SLAB AT ELEVATION 314'-9".
3. SUMP VAULT WITH LID/ACCESS PANELS - SEE MECHANICAL.
4. AREA OF TEMPORARY SLAB/FUTURE RADIATION THERAPY VAULT SECONDARY SLAB. LOCATE TOP OF TEMPORARY SLAB AT ELEVATION 314'-9".
5. LOCATIONS OF HOUSEKEEPING PADS, FLOOR DRAINS (FD) AND CLEAN OUTS (CO) ARE FOR REFERENCE ONLY. CONTRACTOR IS TO REQUEST FINAL LAYOUT DRAWINGS 60 DAYS PRIOR TO SCHEDULED LAYOUT OF STRUCTURAL SLAB.
6. STORM & SANITARY SEWER VAULT - TOP OF CONCRETE WITHIN VAULT AT EL. 312'-9" REFER TO STRUCTURAL & CIVIL DRAWINGS.
7. OUTLINE OF RETAINING WALL ABOVE.
8. EXTENT OF NEW SLAB. SLOPE TOP OF SLAB BETWEEN CURBS TO MATCH ELEVATION OF EXISTING SLAB FOR SMOOTH TRANSITION.
9. OIL/WATER SEPARATOR VAULT LID - SEE MECHANICAL.
10. LOCATION OF NEW OPENING THROUGH EXISTING CONCRETE WALL - SEE STRUCTURAL FOR REINFORCING DETAILS. LOCATE TOP OF OPENING/BOTTOM OF STEEL REINFORCING AT ELEVATION 325'-10".
11. SAWCUT OPENING THROUGH EXISTING CONCRETE. TOP OF OPENING AT ELEVATION 325'-3". SEE STRUCTURAL FOR REINFORCING REQUIREMENTS. FIELD VERIFY RELATIONSHIP OF EXISTING CONCRETE/CORRIDOR TO NEW BUILDING GRID PRIOR TO CUTTING OPENING. SEE NOTES ON DRAWING A301 REGARDING PARTITION LAYOUT.

GIFFIN • BOLTE • JURGENS
ARCHITECTS
815 S.W. SECOND AVENUE, PORTLAND, OREGON 97204
(503) 223-0992 www.gbjarch.com FAX (503) 294-3961



MultiCare
EMERGENCY DEPARTMENT & CANCER CENTER EXPANSION
TACOMA, WASHINGTON

ADDENDUM #5	02-25-08
ADDENDUM #6	04-15-08
100% CD	09-26-08

Date 6-15-2007
Scale 1/8"=1'-0"
Drawn By JLC
Job No. 4034

1st Floor
Edge of Slab -
South
A2
01