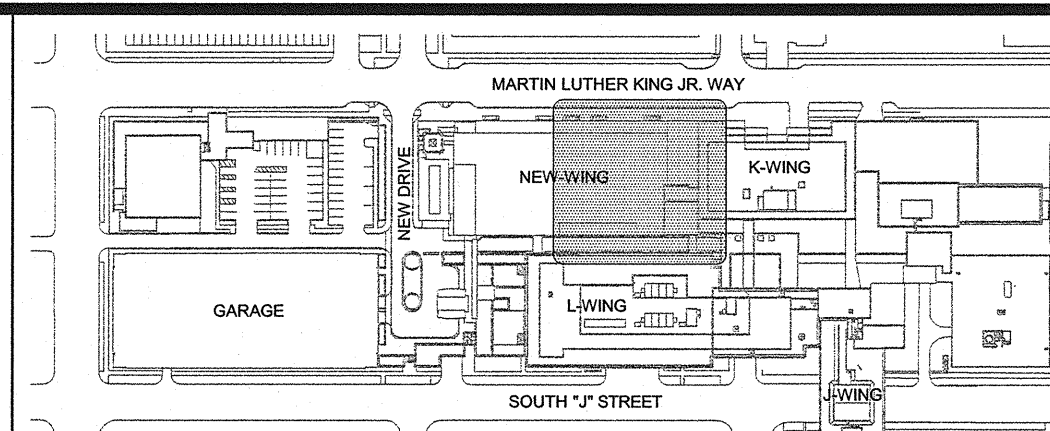
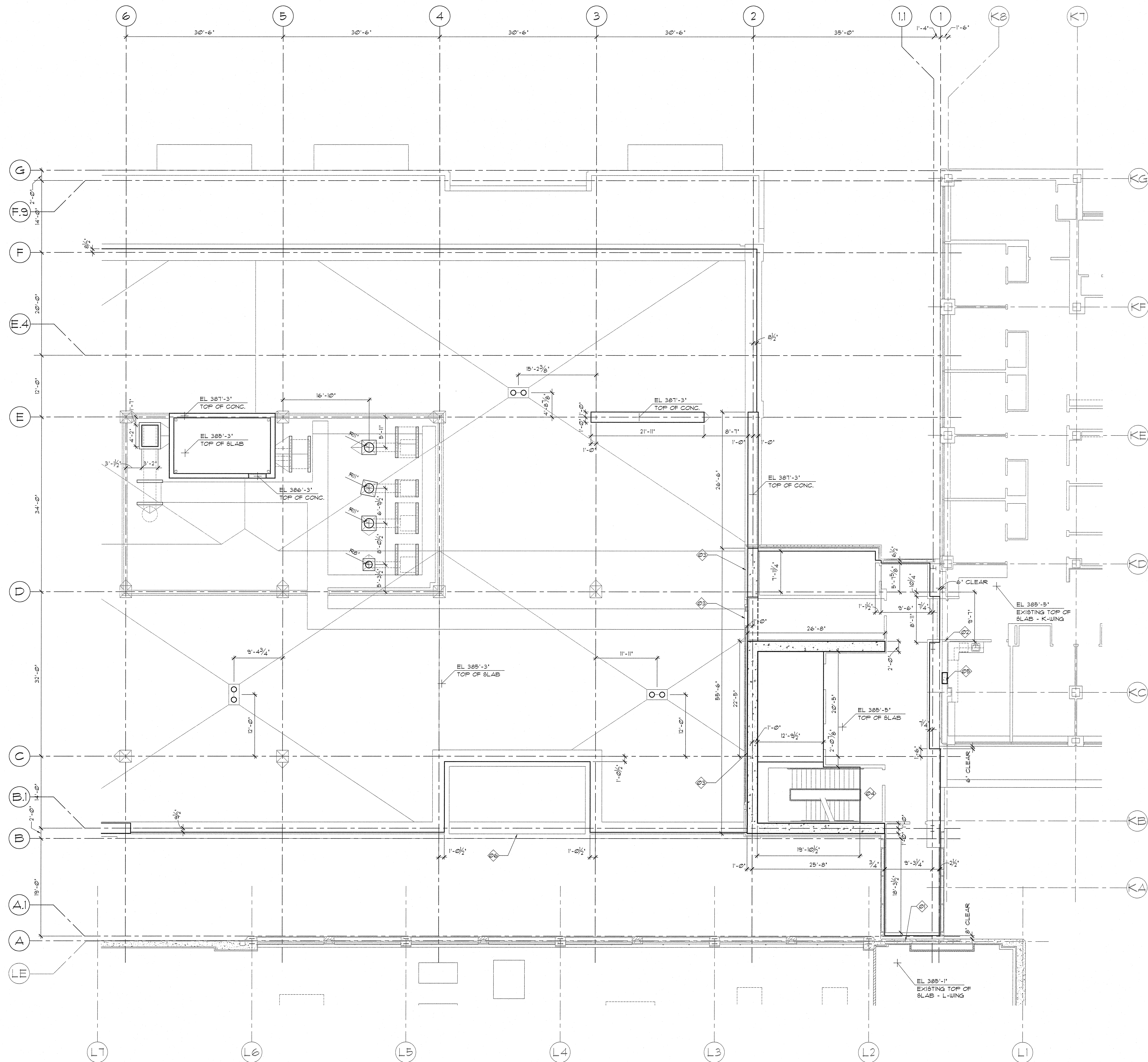


1 2 3 4 5 6 7

A
B
C
D
E



KEY PLAN

GENERAL NOTES

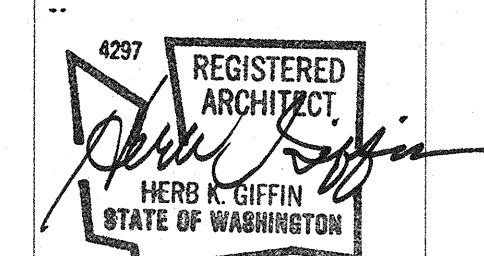
A REFER TO E5/AS.01 FOR EXTENT OF K-WING PRECAST PANEL DEMOLITION.

KEY NOTES

- NO OPENING THROUGH EXISTING CONCRETE WALL.
- SAW CUT EXISTING CONCRETE. DIMENSION ESTABLISHES WESTERLY LIMIT OF NEW OPENING. TOP OF OPENING AT ELEVATION 385'-5\"/>

GIFFIN • BOLTE • JURGENS
ARCHITECTS

815 S.W. SECOND AVENUE • PORTLAND, OREGON 97204
(503) 223-0992 • www.gbjarch.com • FAX (503) 294-3961



MultiCare

EMERGENCY DEPARTMENT & CANCER CENTER EXPANSION

TACOMA, WASHINGTON

Date 09-26-2008
Scale 1/8"=1'-0"
Drawn By JLC
Job No. 4034

6th Floor
Edge of Slab -
North

A2
16