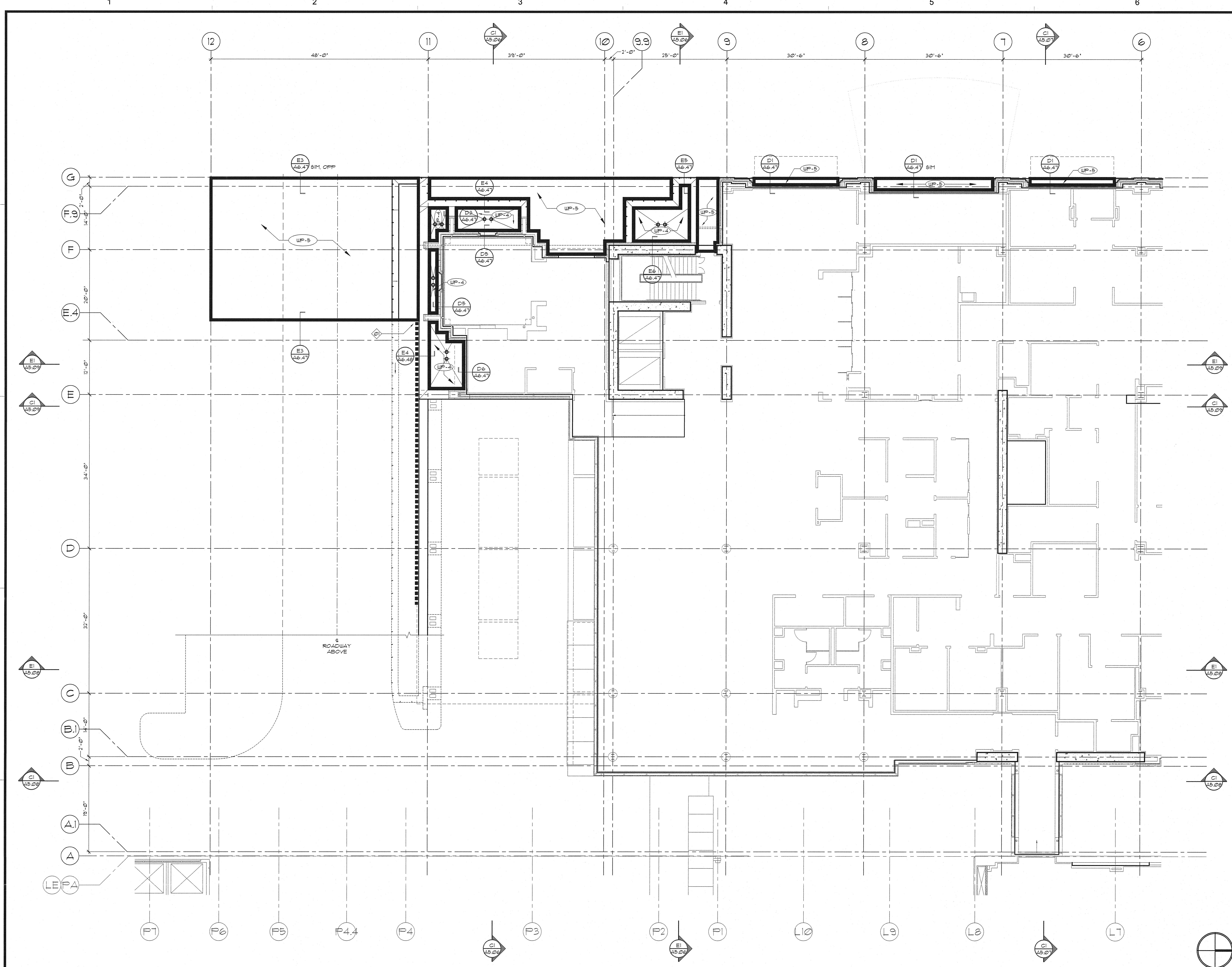


A
B
C
D
E



A
B
C
D
E

KEY PLAN

GENERAL NOTES

A. REFER TO SECTION 0114.00 FOR WP-1 THRU WP-6 AND SECTION 0114.10 FOR WP-7.

B. REFER TO SHEET A6.46 FOR FLUID-APPLIED WATERPROOFING TYPES AND TYPICAL DETAILS.

KEY NOTES

WP-5 OVERLAP WP-1 AT VERTICAL JOINT

LEGEND

1/8" = 1'-0"

09-26-2008

1/8" = 1'-0"

KR

4034

3rd Floor Waterproofing Plan South

A2
53