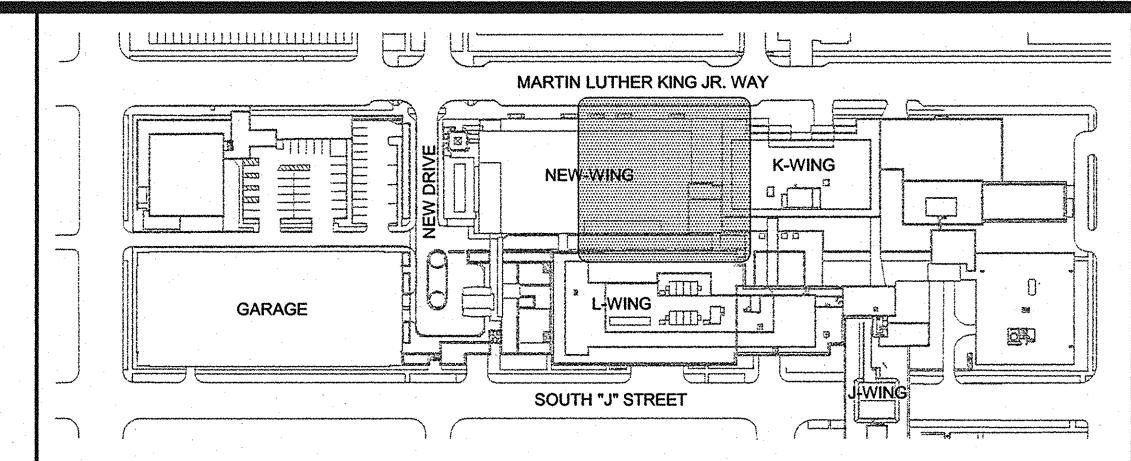
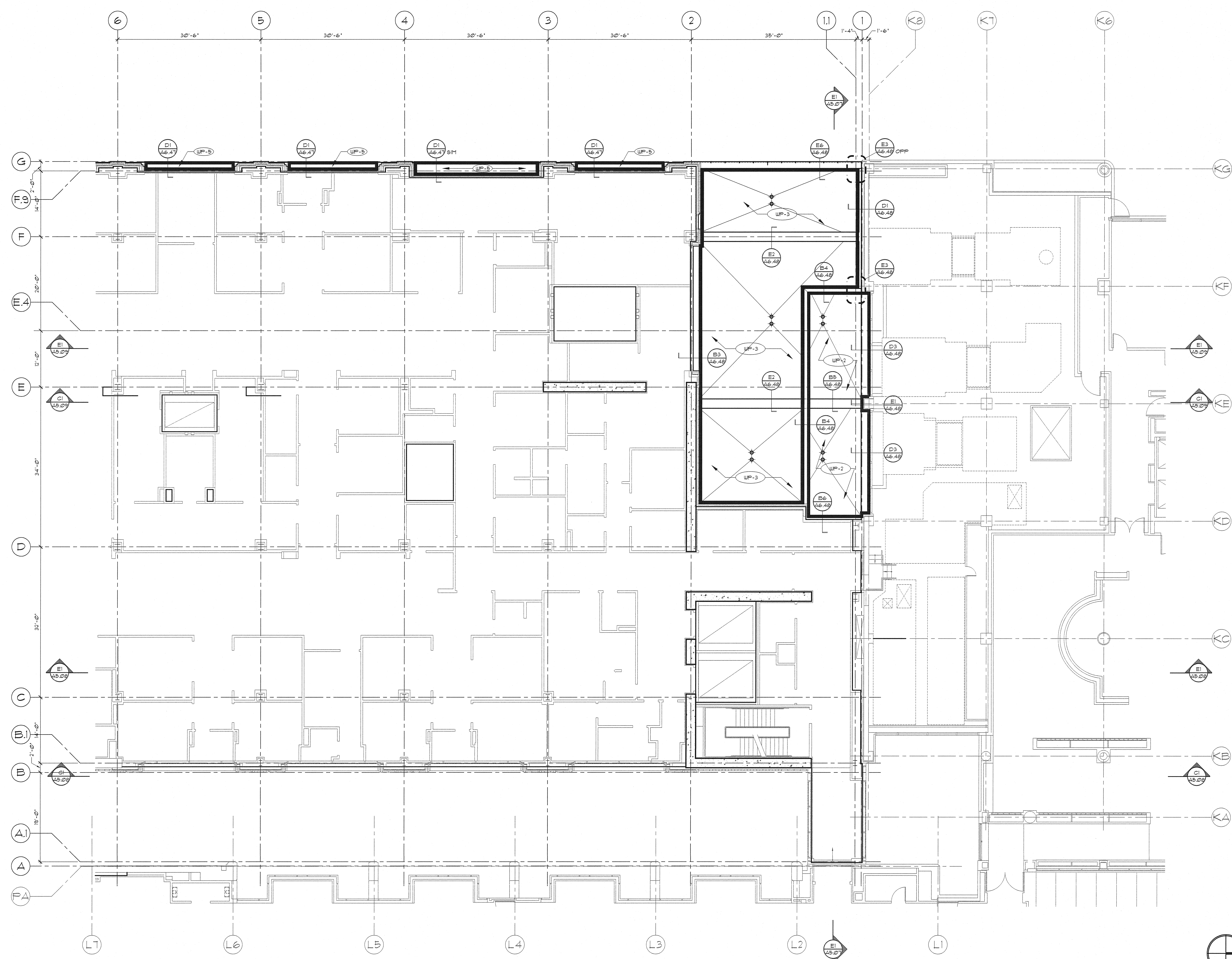


A  
B  
C  
D  
E

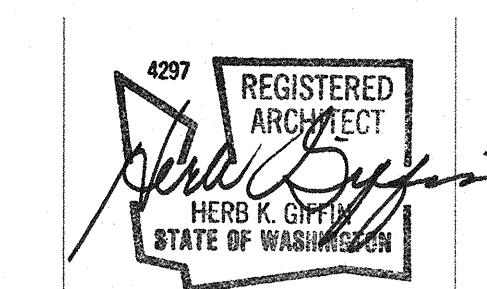


**GENERAL NOTES**

A. REFER TO SECTION 0714 00 FOR WP-1 THRU WP-6 AND SECTION 0714 10 FOR WP-7.

B. REFER TO SHEET A6.46 FOR FLUID-APPLIED WATERPROOFING TYPES AND TYPICAL DETAILS.

**GIFFIN • BOLTE • JURGENS**  
ARCHITECTS  
815 S.W. SECOND AVENUE • PORTLAND, OREGON 97204  
(503) 223-0992 • www.gbjaarch.com • FAX (503) 294-3961



**MultiCare**  
**EMERGENCY DEPARTMENT & CANCER CENTER EXPANSION**  
TACOMA, WASHINGTON

Date	09-26-2008
Scale	1/8"=1'-0"
Drawn By	KR
Job No.	4034

**3rd Floor  
Waterproofing Plan  
North**

**A2  
63**