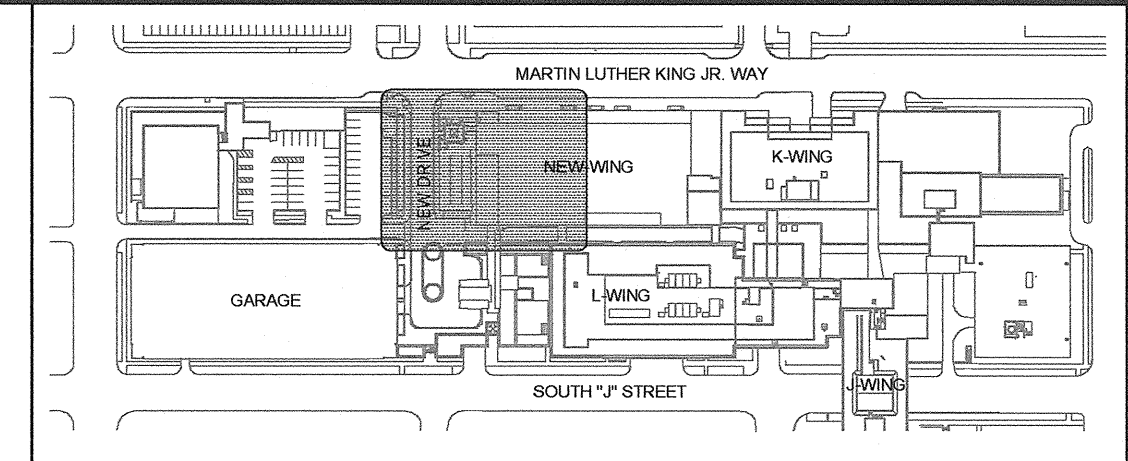
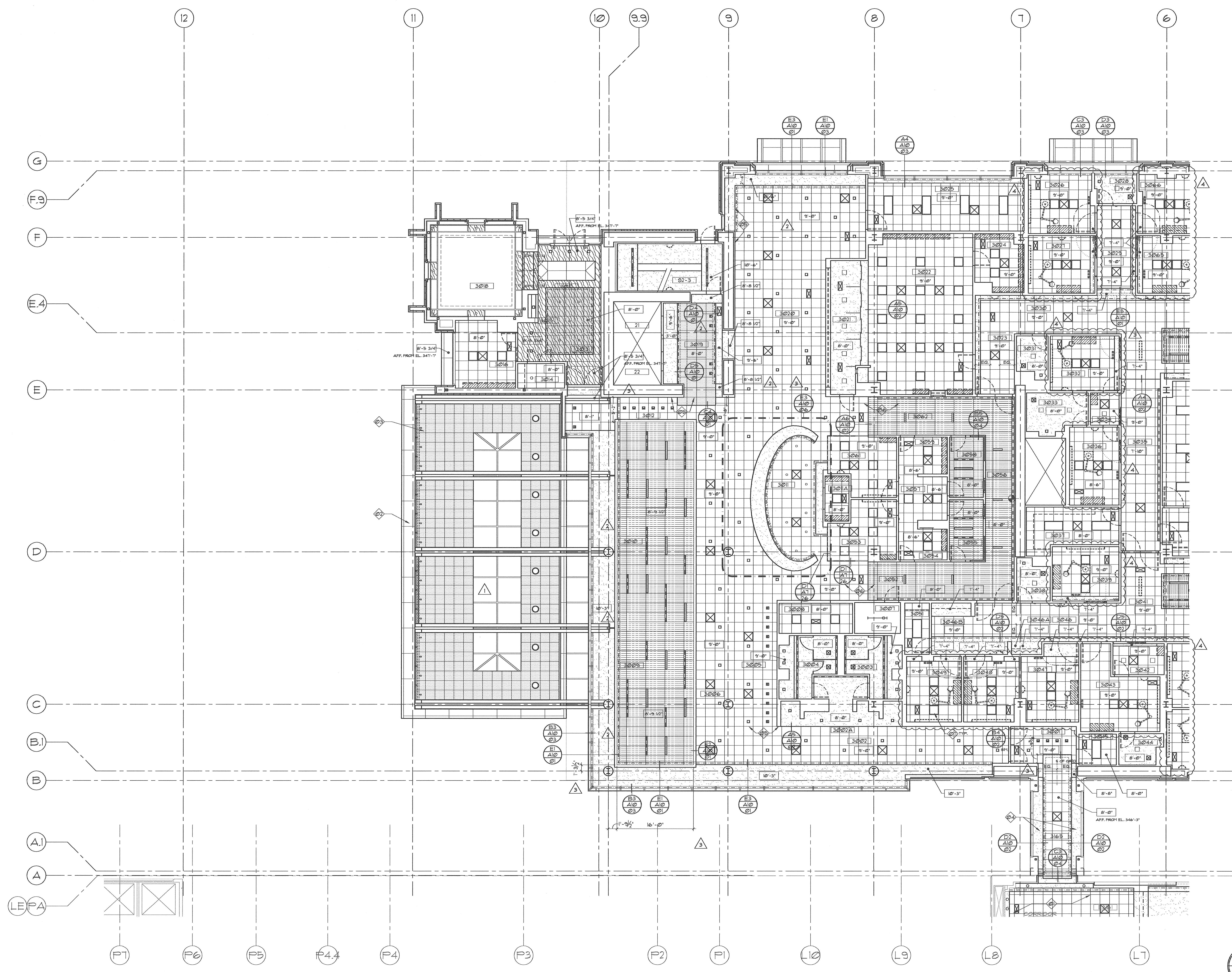


A
B
C
D
E



KEY PLAN

- GENERAL NOTES**
- A. CENTER CEILING GRID IN ROOM UNLESS OTHERWISE NOTED.
 - B. TRANSITIONS ARE FULL TILE UNLESS OTHERWISE NOTED.
 - C. ELEVATIONS ARE TAKEN FROM FINISH FLOOR TO BOTTOM OF GRID.
- KEY NOTES**
- 1. EXTENT OF NEW CEILING AND LIGHTING. DESIGN TO BE DETERMINED.
 - 2. METAL PANEL.
 - 3. EXTERIOR WOOD/METAL CEILING TILES WITH UPLIFT AND COMPRESSION CLIPS.
 - 4. SOFFIT ALIGNS WITH BOTTOM OF MULLION.
 - 5. ALIGN GRID WITH WALL.
 - 6. ALIGN GRID.
 - 7. EXAM LIGHT. SEE DETAILS C1/A1004 AND C2/A1004.

- LIGHT FIXTURE LEGEND**
- COLD CATHODE FIXTURE
 - FENDANT TRACK LIGHT FIXTURE
 - SURFACE WALL-MOUNTED LIGHT FIXTURE
 - FENDANT-MOUNTED, DIRECT/INDIRECT FLUORESCENT LIGHT FIXTURE
 - 2'x4' FLUORESCENT LIGHT FIXTURE
 - 2'x2' FLUORESCENT LIGHT FIXTURE
 - 1'x1' FLUORESCENT LIGHT FIXTURE
 - FLUORESCENT TUBE
 - STRIP FLUORESCENT LIGHT FIXTURE
 - WALL SCONCE
 - RECESSED WALL-WASH LIGHT FIXTURE
 - RECESSED LIGHT FIXTURE
 - IN-USE FIXTURE
 - SPEAKER
 - UNDERCABINET LIGHT FIXTURE
 - RECESS COVE-MOUNTED LINEAR FLUORESCENT LIGHT FIXTURE
 - EXIT SIGN

- CEILING LEGEND**
- WOOD PANEL OVERLAY ON GYPSUM BOARD CEILING/ SOFFIT
 - SUSPENDED WOOD CEILING, PERFORATED, ACT-6
 - 2'x4' ACOUSTIC CEILING TILE, ACT-5
 - 2'x2' ACOUSTIC CEILING TILE, ACT-1, 2, 4 AS SCHEDULED
 - 2'x2' ACOUSTIC / METAL CEILING TILE, ACT-3
 - GYPSUM BOARD CEILING / SOFFIT
 - LINEAR DIFFUSER
 - UPPER CASEWORK TO CEILING, OR FILLER PANEL
 - CURTAIN TRACK
 - IV-TRACK FIXED TO CEILING
 - CURTAIN TRACK FIXED TO CEILING TILE
 - ACCESS PANEL
 - AIR REGISTER, OR GRILLE
 - GRID START POINT.

△ CCD # 1	11-12-2008
△ CCD # 2	12-17-2008
△ CCD # 7	02-20-2009
△ CCD # 12	05-22-2009

Date	09-26-2008
Scale	1/8"=1'-0"
Drawn By	EMF, JLC
Job No.	4034