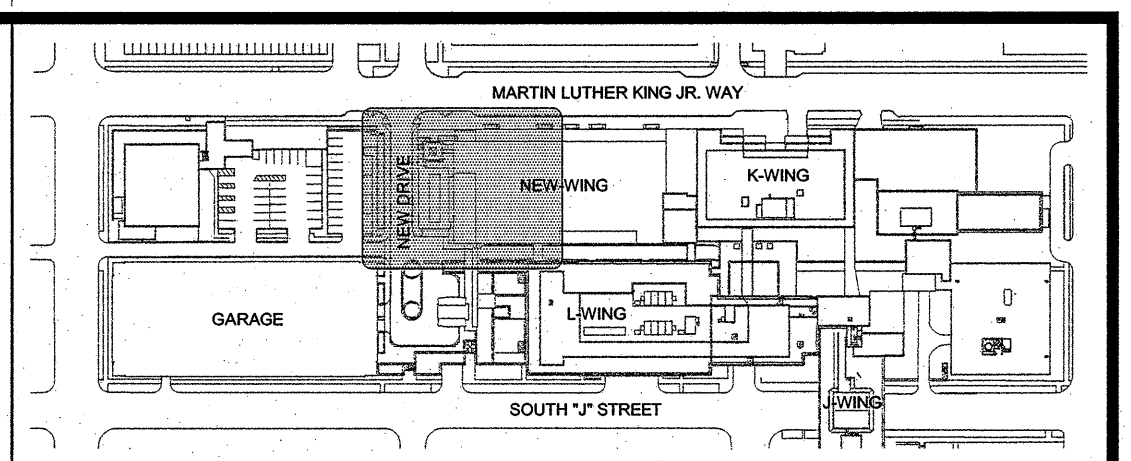
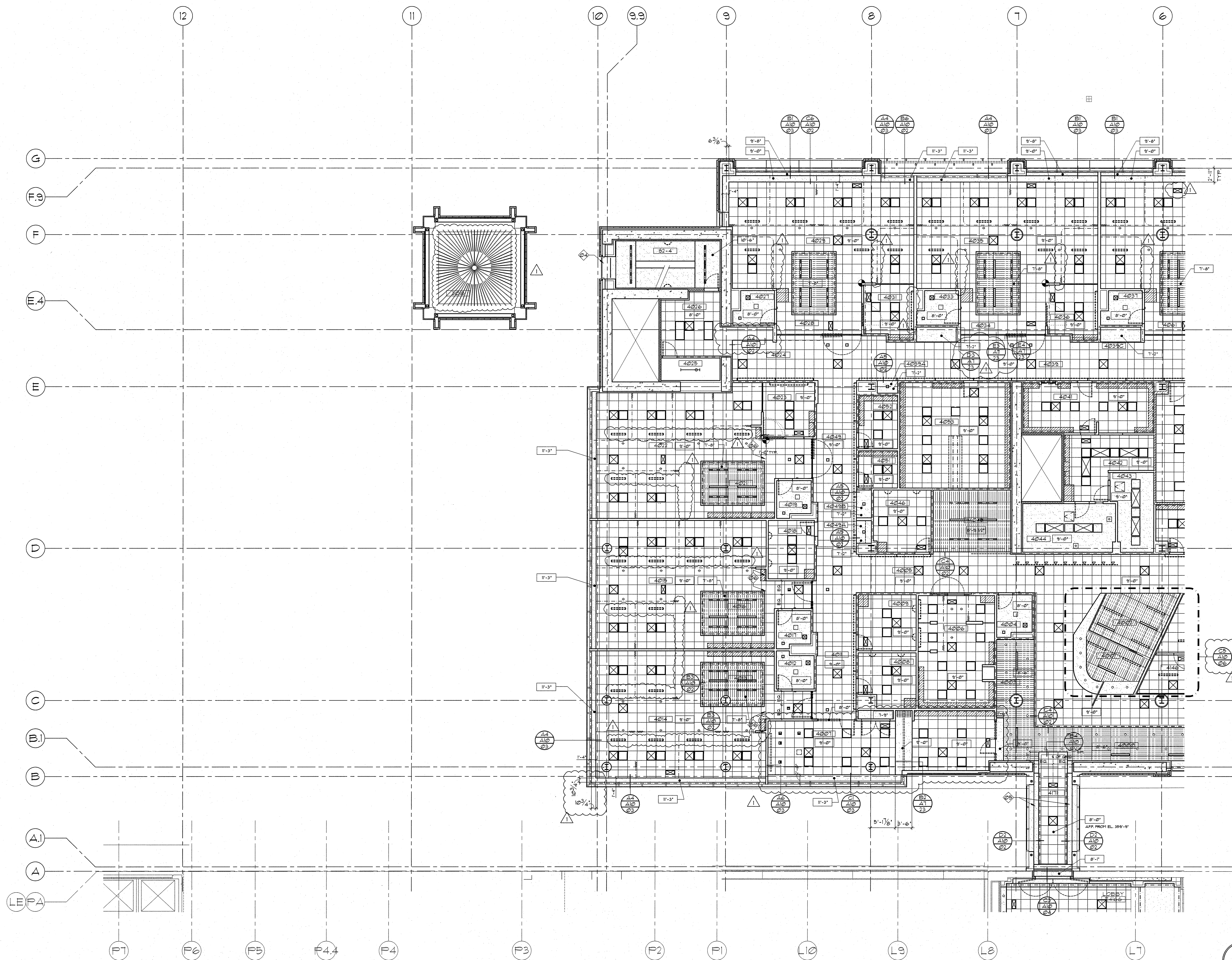


A
B
C
D
E

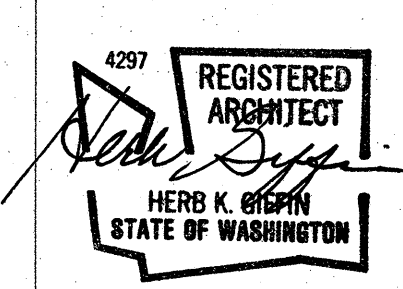


- GENERAL NOTES**
- A. CENTER CEILING GRID IN ROOM UNLESS OTHERWISE NOTED.
 - B. TRANSITIONS ARE FULL TILE UNLESS OTHERWISE NOTED.
 - C. ELEVATIONS ARE TAKEN FROM FINISH FLOOR TO BOTTOM OF GRID.
- KEY NOTES**
- ◇ AREA OF NEW CEILING/LIGHTING TO COORDINATE WITH NEW CANCER CENTER FINISHES. DESIGN TO BE DETERMINED.
 - ◇ AREA OF NEW CEILING. MATCH EXISTING CEILING TILES. CEILING HEIGHT TO BE DETERMINED.
 - ◇ REPAIR EXISTING CEILING AT NEW PARTITION.
 - ◇ SKIM COAT OVER CONCRETE.
 - ◇ SOFFIT ALIGNS WITH BOTTOM OF MULLION.
 - ◇ ALIGN GRID WITH WALL.

- LIGHT FIXTURE LEGEND**
- P PENDANT TRACK LIGHT FIXTURE
 - S SURFACE WALL-MOUNTED LIGHT FIXTURE
 - P PENDANT-MOUNTED, DIRECT/INDIRECT FLUORESCENT LIGHT FIXTURE
 - 2'x4' FLUORESCENT LIGHT FIXTURE
 - 2'x2' FLUORESCENT LIGHT FIXTURE
 - 1'x1' FLUORESCENT LIGHT FIXTURE
 - FLUORESCENT TUBE
 - STRIP FLUORESCENT LIGHT FIXTURE
 - WALL SCONCE
 - RECESSED WALL-WASH LIGHT FIXTURE
 - RECESSED LIGHT FIXTURE
 - IN-USE FIXTURE
 - SPEAKER
 - UNDERCABINET LIGHT FIXTURE
 - RECESS COVE-MOUNTED LINEAR FLUORESCENT LIGHT FIXTURE
 - EXIT SIGN

- CEILING LEGEND**
- WOOD PANEL OVERLAY ON GYPSUM BOARD CEILING / SOFFIT
 - SUSPENDED WOOD CEILING, PERFORATED, ACT-6
 - 2'x4' ACOUSTIC CEILING TILE, ACT-5
 - 2'x2' ACOUSTIC CEILING TILE, ACT-1, 2, 4 AS SCHEDULED
 - 2'x2' ACOUSTIC / METAL CEILING TILE, ACT-3
 - GYPSUM BOARD CEILING / SOFFIT
 - LINEAR DIFFUSER
 - UPPER CASEWORK TO CEILING, OR FILLER PANEL
 - CURTAIN TRACK
 - IV-TRACK FIXED TO CEILING
 - CURTAIN TRACK FIXED TO CEILING TILE
 - ACCESS PANEL
 - AIR REGISTER OR GRILLE
 - GRID START POINT.

GIFFIN • BOLTE • JURGENS
ARCHITECTS
815 S.W. SECOND AVENUE, PORTLAND, OREGON 97204
(503) 223-0992 www.gbjarch.com FAX (503) 294-3961



MultiCare
EMERGENCY DEPARTMENT & CANCER CENTER EXPANSION
TACOMA, WASHINGTON

CCD-07 02-20-09

Date 09-26-2008
Scale 1/8"=1'-0"
Drawn By EMF, JLC
Job No. 4034

4th Floor Reflected Ceiling Plan - South

A4
04