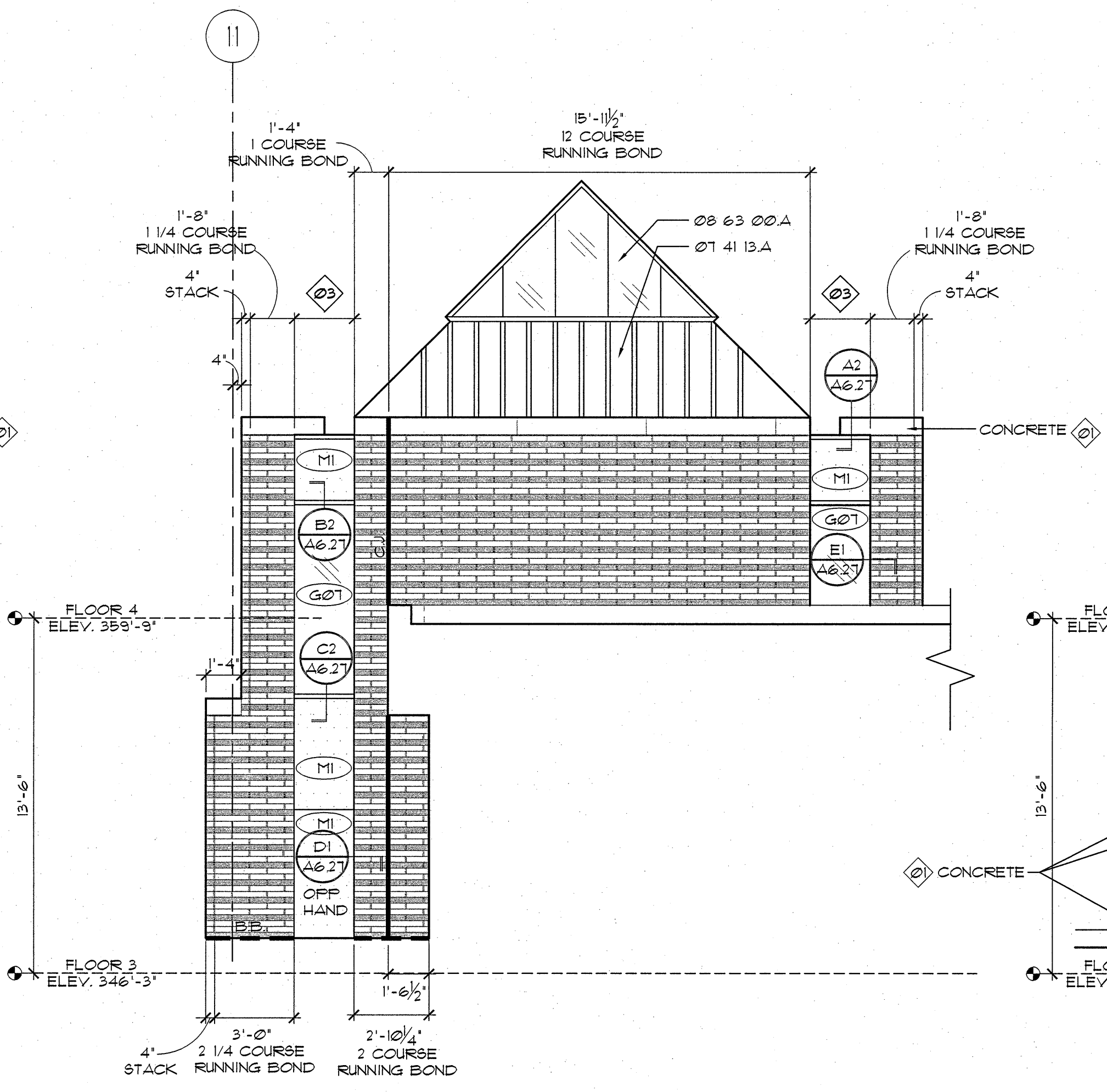
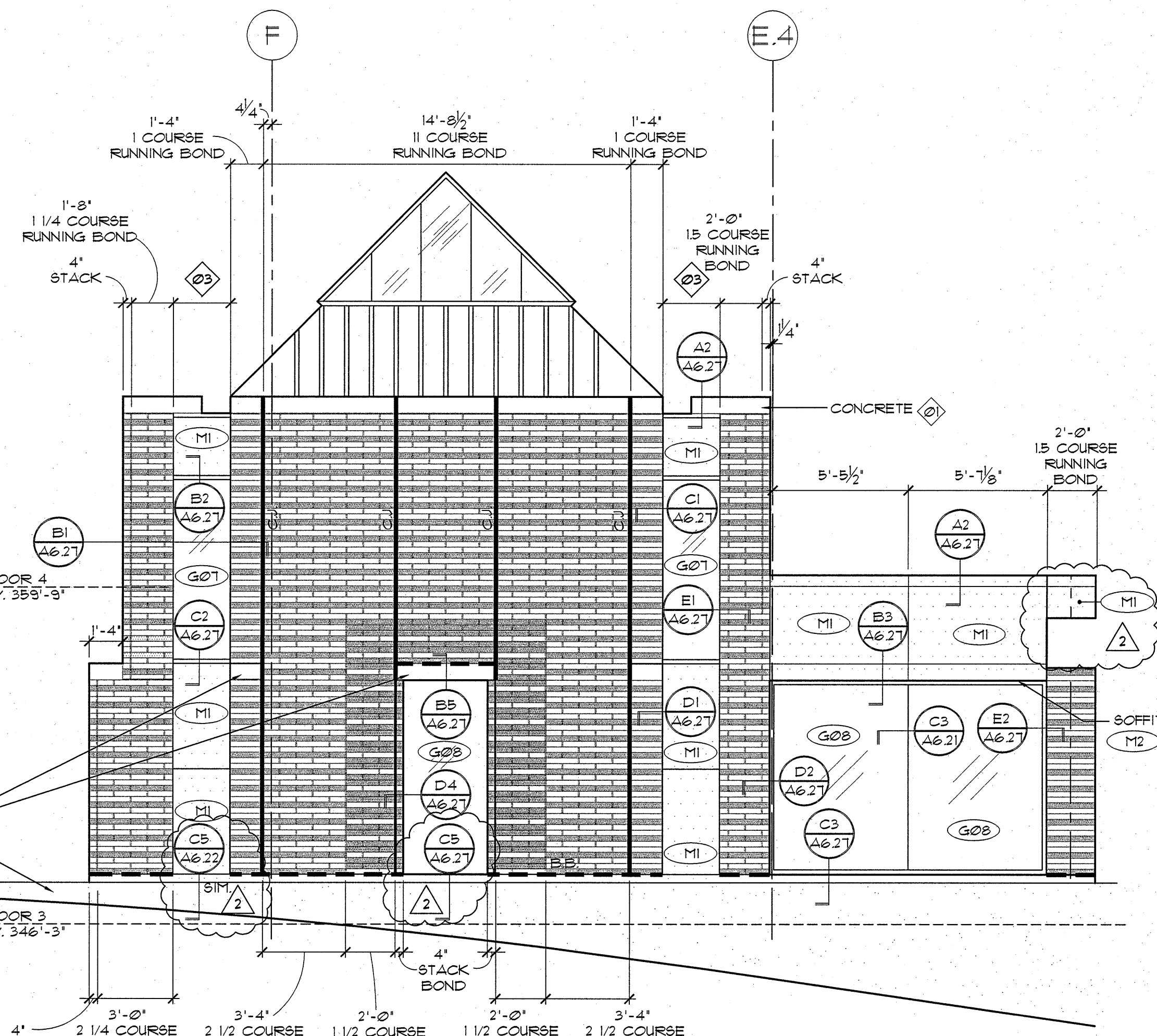


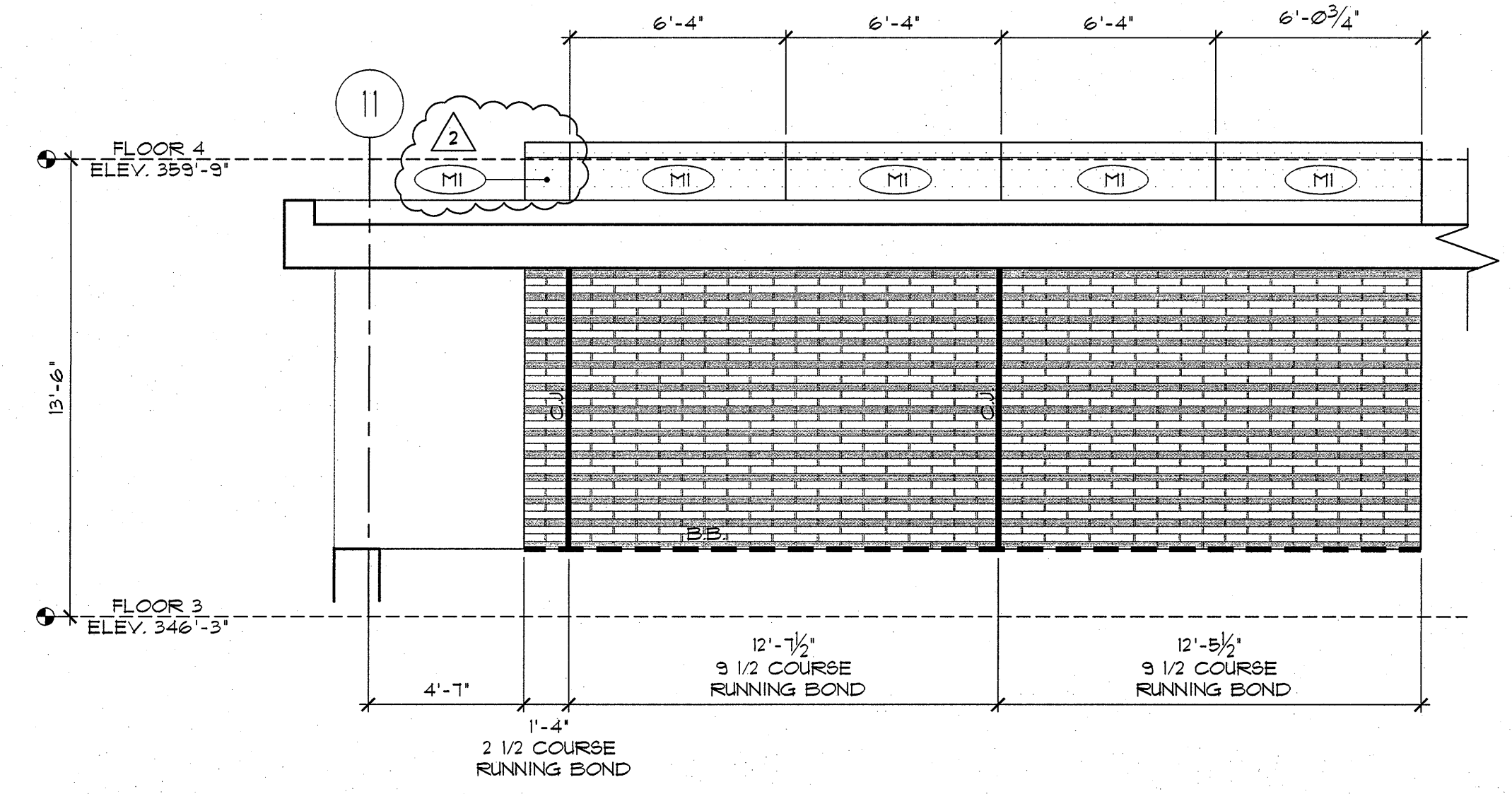
B1 NORTH ELEVATION
1/4" = 1'-0"



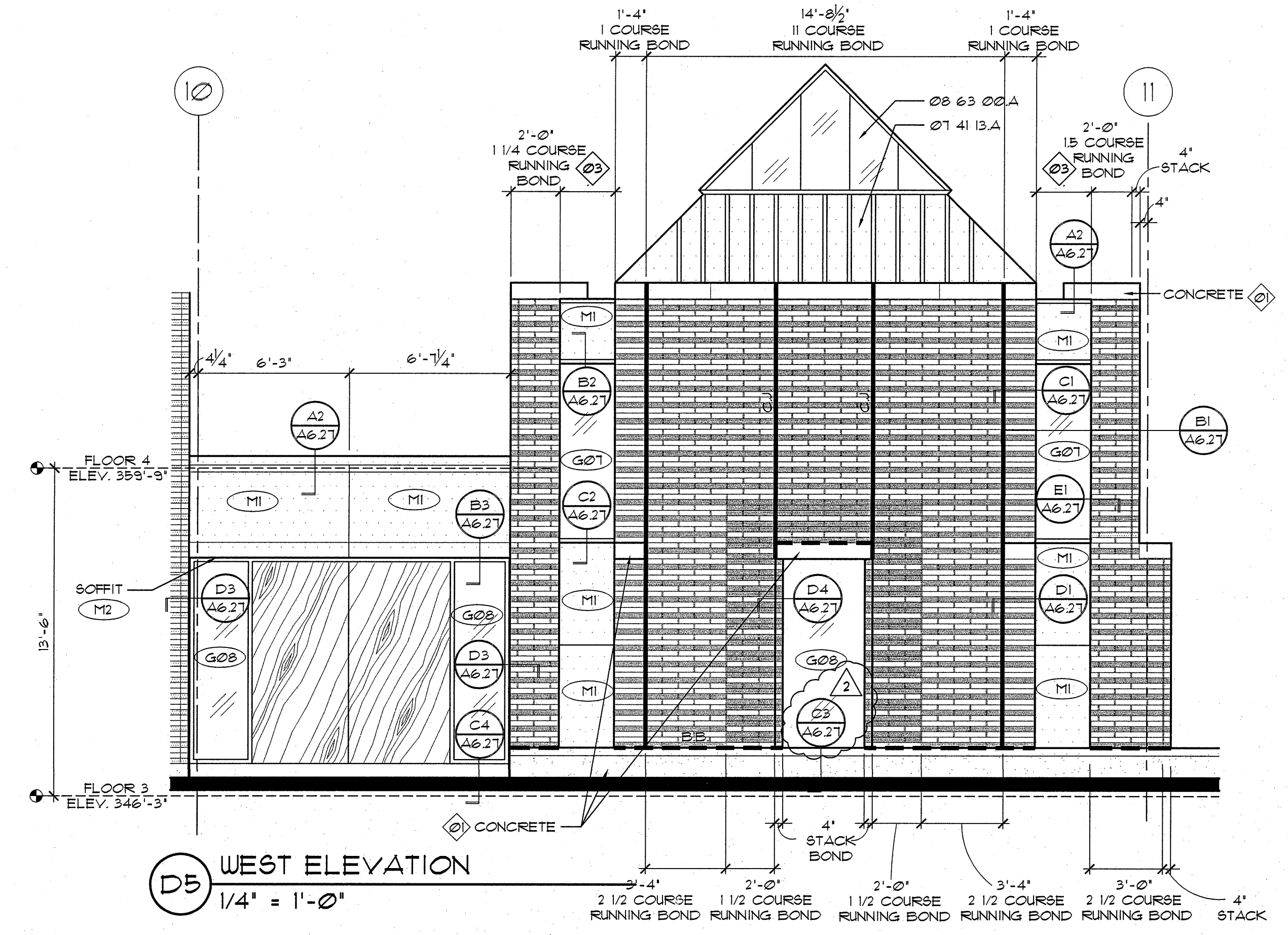
B3 EAST ELEVATION
1/4" = 1'-0"



B5 SOUTH ELEVATION
1/4" = 1'-0"



D2 EAST-2-ELEVATION
1/4" = 1'-0"



D5 WEST ELEVATION
1/4" = 1'-0"

- MATERIAL LEGEND**
- Division 01 Thermal & Moisture Protection
- 01 41 13.A METAL ROOF PANELS
- 01 42 43 MI COMPOSITE ALUMINUM WALL PANEL (COLOR 1 UNLESS OTHERWISE NOTED)
- Division 08 Openings
- 08 44 12 M2 FORMED ALUMINUM PANEL (COLOR 1 UNLESS OTHERWISE NOTED)
- 08 63 00 METAL FRAMED SKYLIGHTS
- 08 80 00 G01 THERMAL CLEAR
- G02 THERMAL FRITTED ON SURFACE 2
- G03 THERMAL FRITTED ON SURFACE 2, SPANDREL COATINGS ON SURFACE 4
- G04 THERMAL CLEAR, TEMPERED INSIDE LITE
- G05 THERMAL CLEAR, FRITTED ON SURFACE 2, TEMPERED INSIDE LITE
- G06 THERMAL CLEAR, TEMPERED BOTH LITES
- G07 THERMAL CLEAR
- G08 THERMAL CLEAR, TEMPERED BOTH LITES
- 08 91 19 LI EXTRUDED ALUMINUM FIXED LOUVER (COLOR 1 UNLESS OTHERWISE NOTED)

- GENERAL NOTES**
- A. REFER TO WALL SECTIONS FOR VERTICAL DIMENSIONING AND KEYING OF HORIZONTAL JOINT DETAILS.
- B. FLOOR ELEVATIONS SHOWN ARE REFERENCE ELEVATIONS FOR THIS EMERGENCY DEPARTMENT AND CANCER CENTER EXPANSION ONLY. FLOOR ELEVATIONS VARY AT EXISTING HOSPITAL WINGS. FLOOR ELEVATIONS VARY AT NORTH CORE AND TRANSITIONS TO EXISTING BUILDINGS.
- KEY NOTES
1. ALL ARCHITECTURALLY EXPOSED STRUCTURAL STEEL AND CONCRETE TO BE PAINTED COLOR 13 PER SPEC. SECTION 09 06 05.
2. COPING TO BE PAINTED COLOR 13 PER SPEC. SECTION 09 06 05.
3. MI 1 & M2 TO BE COLOR 1 (DARK).

- MATERIAL LEGEND**
- X* DESIGNATES GENERAL CATEGORY OF MATERIAL
- G = GLAZING
- M = METAL PANEL
- L = LOUVER
- N* DESIGNATES SPECIFIC MATERIAL TYPE - SEE SPECIFICATIONS

- MASONRY JOINT - LEGEND**
- CJ - CONTROL JOINT - TYPICAL MASONRY JOINT WITH W/ BACKER ROD & SEALANT TYPICAL, NO MORTAR OR BRIDGING OF JOINT WITH REINFORCING OR LINTEL ANGLES
- DJ - DRIFT/ISOLATION JOINT - 1 1/8" WIDTH W/ BACKER ROD & SEALANT TYPICAL, NO MORTAR OR BRIDGING OF JOINT WITH REINFORCING OR LINTEL ANGLES. SEE ASSOCIATED DETAILS FOR FLASHING & SEALANT TREATMENT OF SPECIFIC JOINTS.
- BB - BOND BREAKER - 28 GAUGE STAINLESS STEEL OR MATERIAL CALLED OUT IN ASSOCIATED DETAILS FULL WIDTH OF BRICK LESS 1/8" - ALIGN W/ BACK FACE OF BRICK - TYPICAL BETWEEN BRICK AND PRECAST OR CONCRETE

- MATERIAL LEGEND**
- Clear Thermal Glazing with Solar Coating
- Thermal Glazing with Ceramic Frit
- Thermal Glazing with Ceramic Frit and Spandrel Paint
- Brick A (Field)
- Brick B (Accent)
- Metal Panel
- Painted Concrete