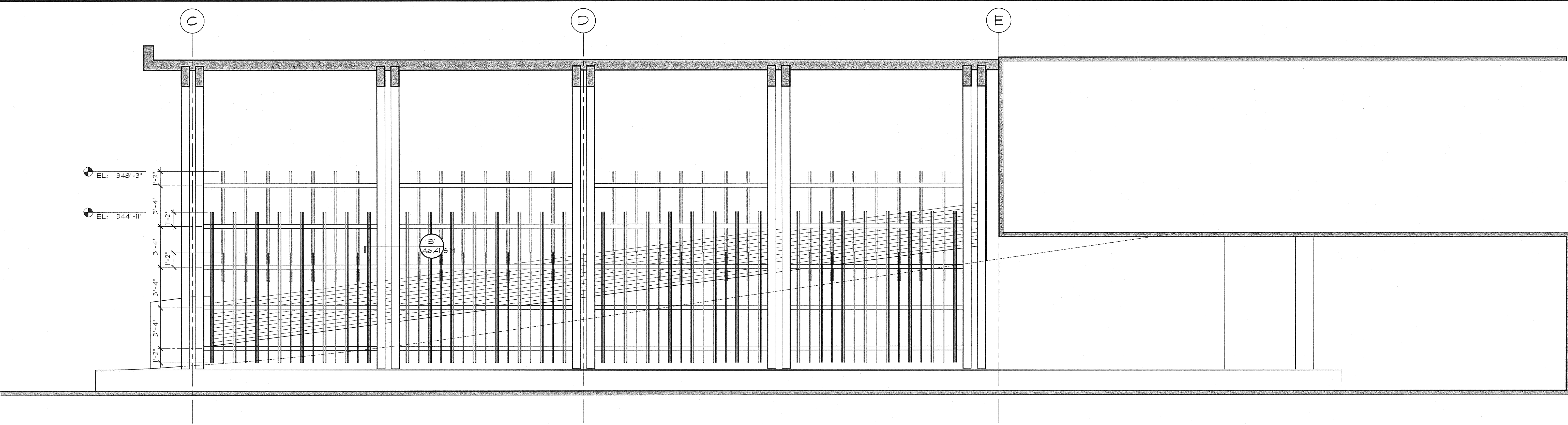


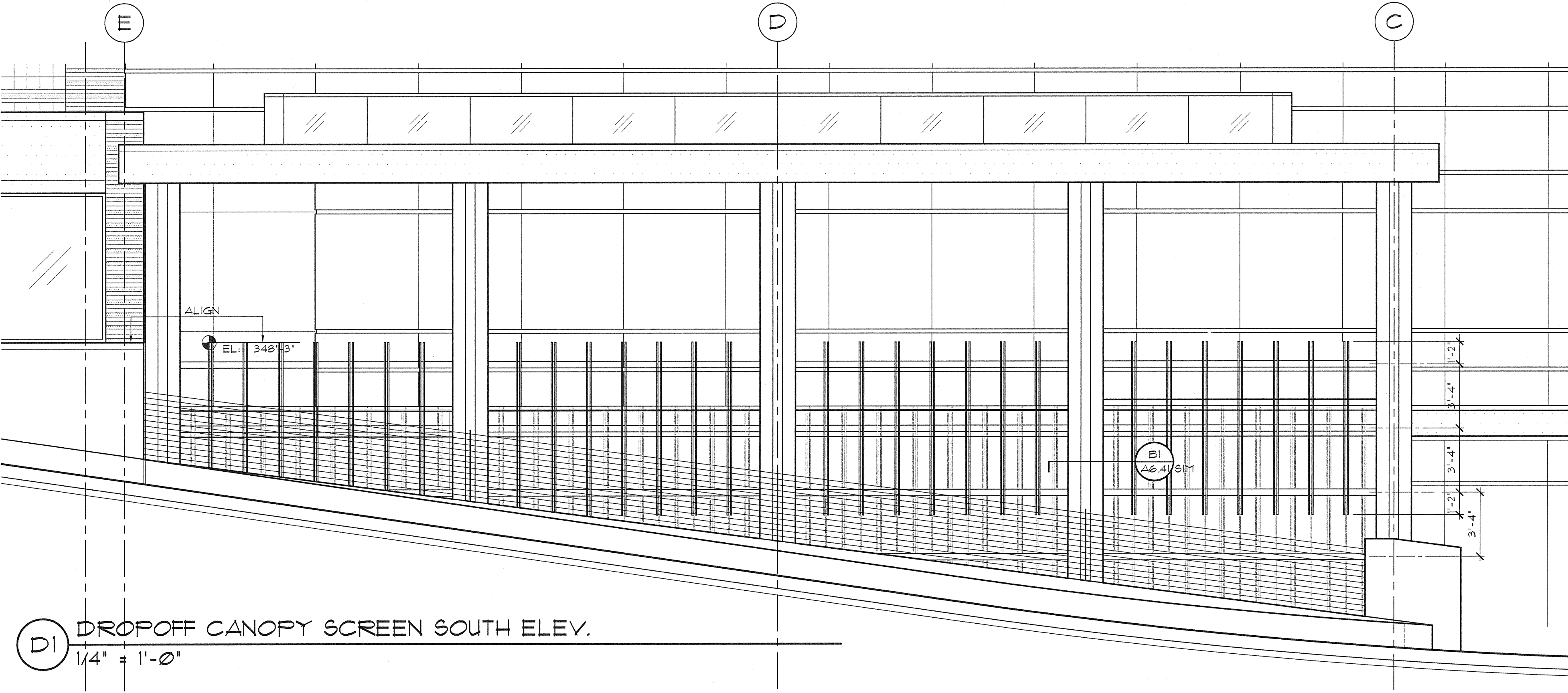
A  
B  
C  
D  
E

A  
B  
C  
D  
E

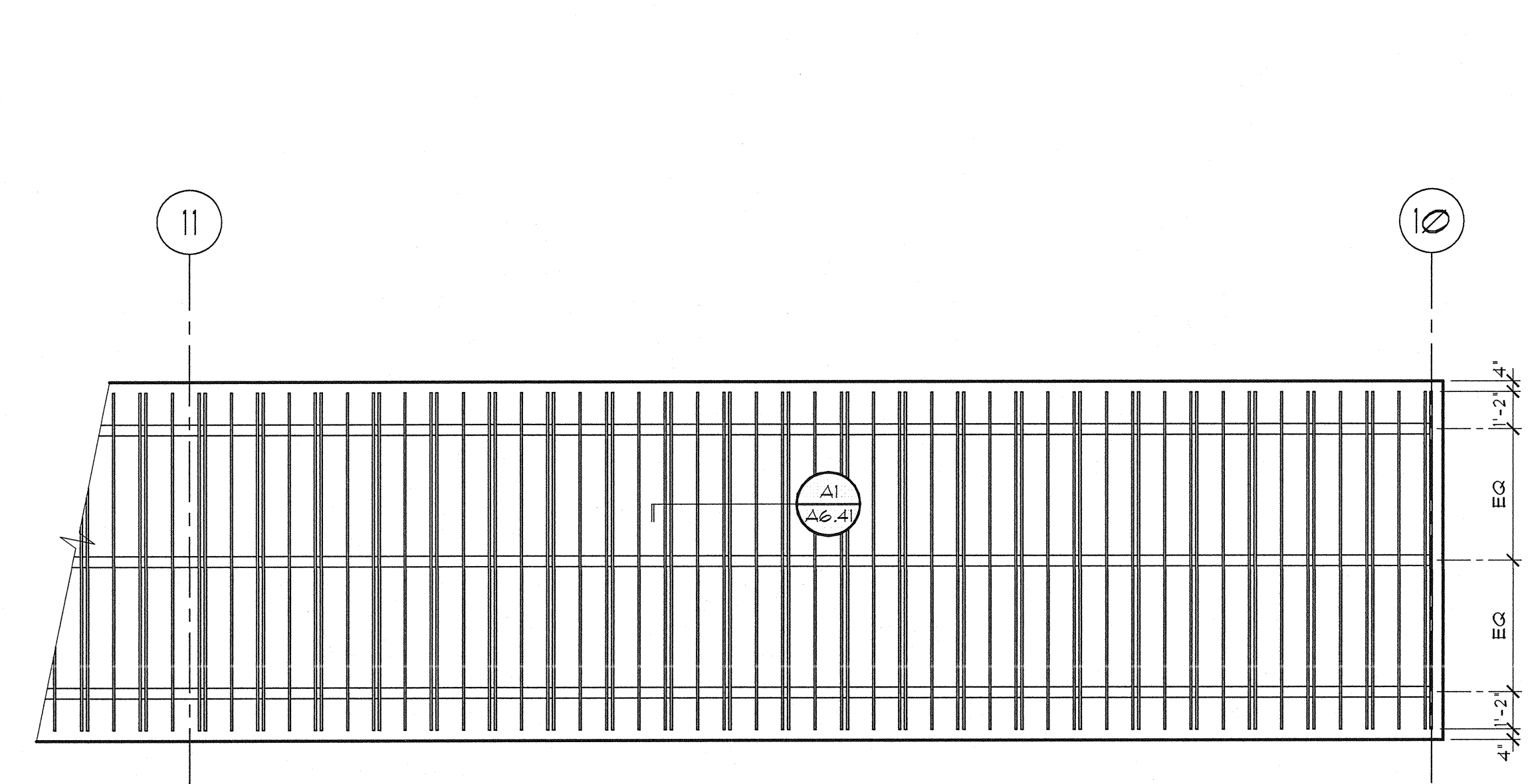
**GENERAL NOTES**  
A. ALL STEEL CANOPY AND SCREEN SUPPORTS TO BE PAINTED "DARK METAL", SEE AC105.



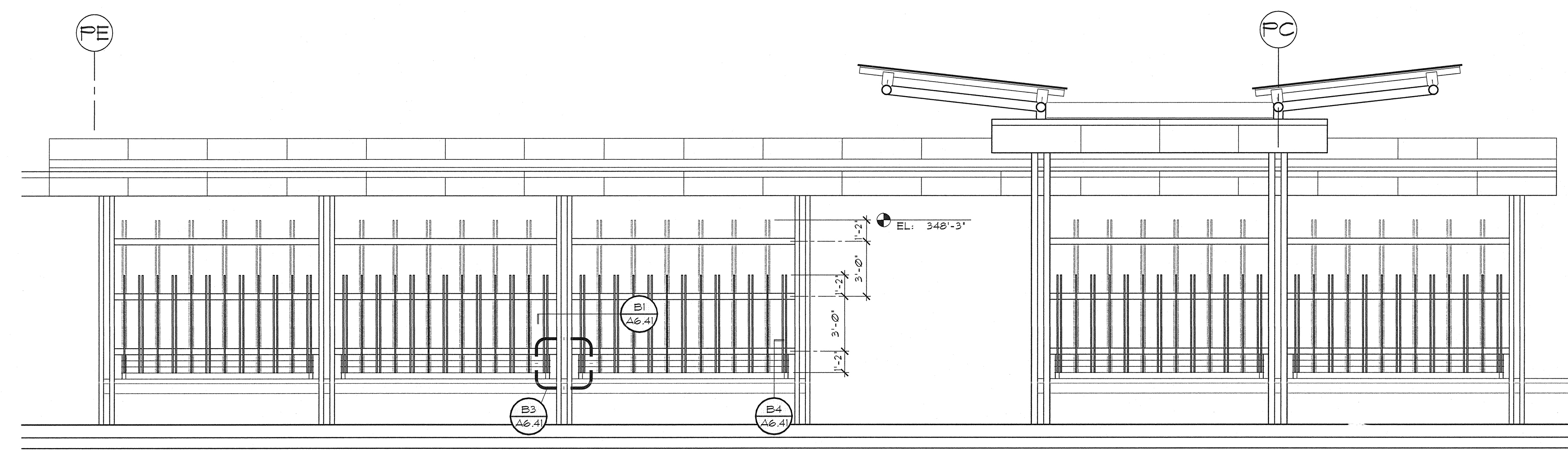
**(B1) DROP-OFF CANOPY SCREEN NORTH ELEV.**  
1/4" = 1'-0"



**(D1) DROP-OFF CANOPY SCREEN SOUTH ELEV.**  
1/4" = 1'-0"



**(E1) RETAINING WALL SCREEN**  
1/4" = 1'-0"



**(E3) PLAZA CANOPY SCREEN SOUTH ELEV.**  
1/4" = 1'-0"

**GIFFIN • BOLTE • JURGENS**  
ARCHITECTS  
815 S.W. SECOND AVENUE • PORTLAND, OREGON 97204  
(503) 223-0992 www.gbjarch.com FAX (503) 294-3961



**MultiCare**  
**EMERGENCY DEPARTMENT & CANCER CENTER EXPANSION**  
TACOMA, WASHINGTON


Date 09-26-2008  
Scale AS SHOWN  
Drawn By RJS  
Job No. 4034

**PARTIAL EXTERIOR ELEVATIONS**

**A5**  
**04**