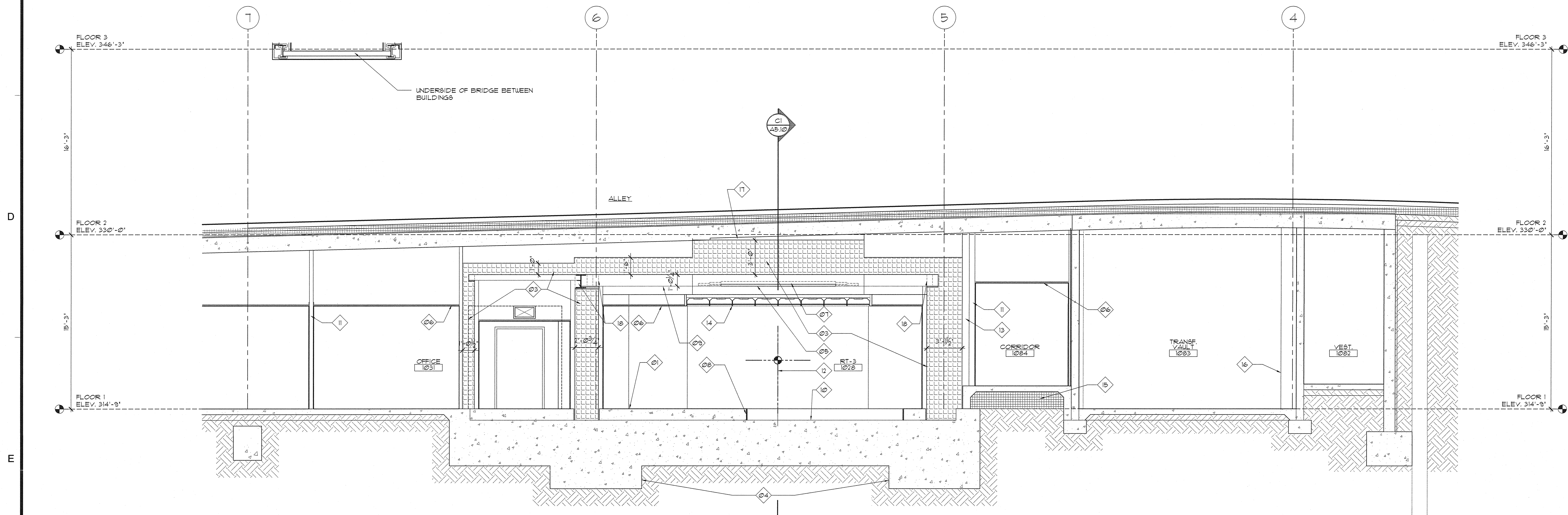


C1 WEST-EAST SECTION THROUGH RADIATION THERAPY #3 @ ISOCENTER
1/4" = 1'-0"



E1 SOUTH-NORTH SECTION THROUGH RADIATION THERAPY #3 @ ISOCENTER
1/4" = 1'-0"

MATERIAL LEGEND

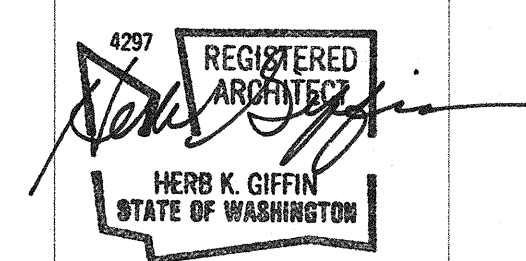
- Earth
- Concrete
- Rigid Insulation
- Leadite Blocks

GENERAL NOTES

- 01 12" CONCRETE
- 02 CONCRETE WALL
- 03 LEADITE BRICK
- 04 CONCRETE FOUNDATION (SEE STRUCTURAL)
- 05 2" STEEL PLATE
- 06 SUSPENDED CLG.
- 07 1", 2" AND 3" LEAD
- 08 12" RECESSED BASE FRAME (COORDINATE W/ SITE SPECIFIC VENDOR DUG. PRIOR TO SLAB FOUR)
- 09 WIDE FLANGE BEAM
- 10 TOP OF STRUCTURAL SLABS (SEE EDGE OF SLAB DUGS. FOR EXTENT)
- 11 METAL FRAME GYP. PARTITION
- 12 ISOCENTER
- 13 WALL CAVITY
- 14 SKY FACTORY LIGHT BOX
- 15 RIGID INSUL TO FORM RAMP
- 16 OUTLINE OF COLUMN BEYOND
- 17 FILL GAP W/ GROUT EQUIVALENT TO LEADITE XN-208
- 18 BLOCK/GROUT INFILL
- 19 14" POST TENSIONED CONCRETE SLAB
- 20 OUTLINE OF GRADE BEAM BEYOND

GIFFIN • BOLTE • JURGENS
ARCHITECTS

815 S.W. SECOND AVENUE • PORTLAND, OREGON 97204
(503) 223-0992 www.gbjaarch.com FAX (503) 294-3961



MultiCare

EMERGENCY DEPARTMENT & CANCER CENTER EXPANSION

TACOMA, WASHINGTON

Date 09-26-2008
Scale AS SHOWN
Drawn By RJS
Job No. 4034

**RADIATION
THERAPY -
SECTIONS
THROUGH
ISOCENTER**

**A5
10**