

A

B

C

D

E

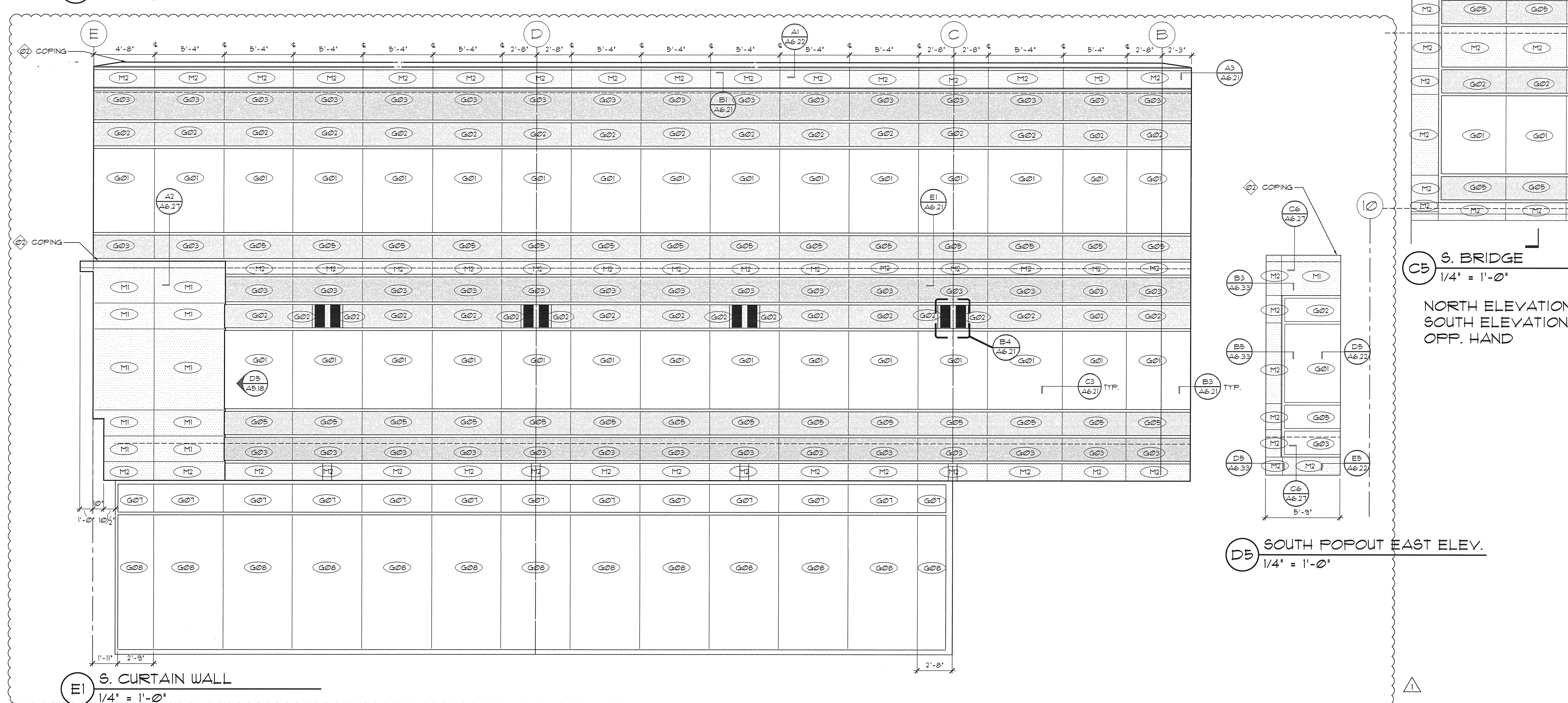
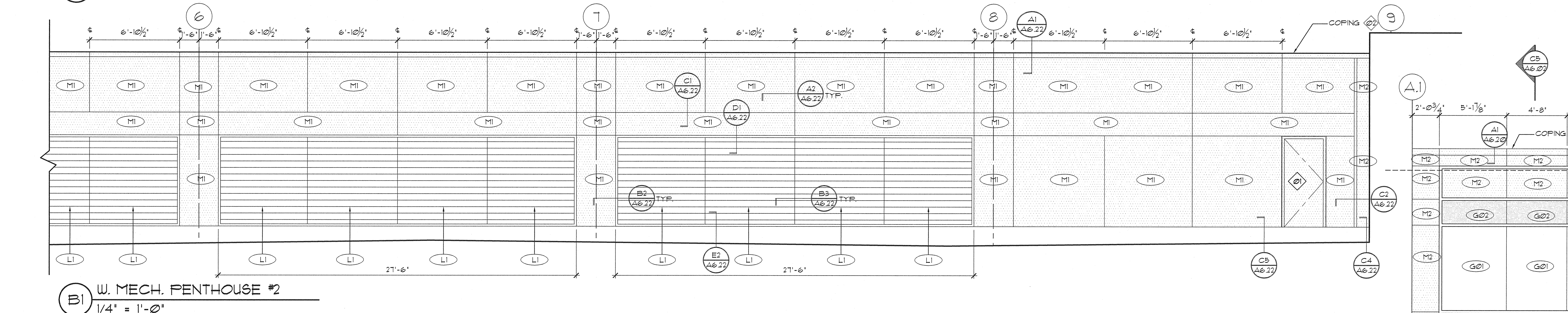
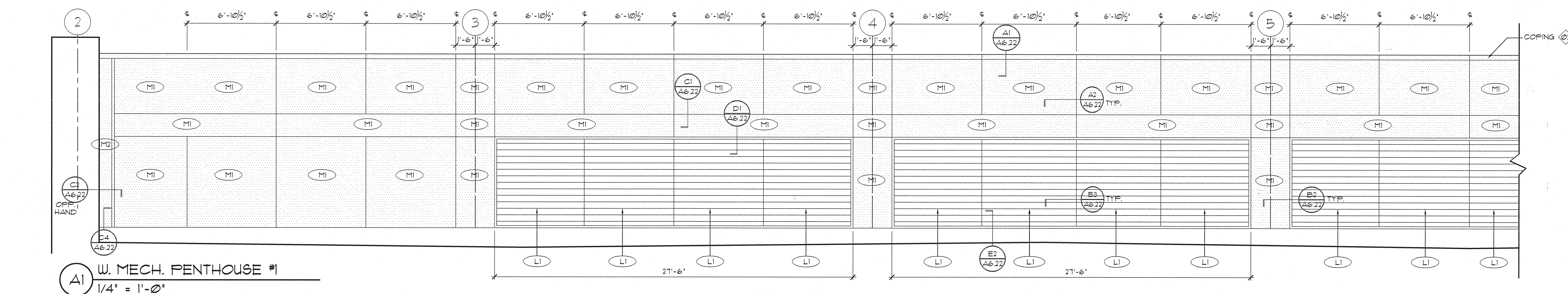
A

B

C

D

E



## MATERIAL LEGEND

Division 07 Thermal &amp; Moisture Protection

07 42 43 M1 COMPOSITE ALUMINUM WALL PANEL (COLOR 2 UNLESS OTHERWISE NOTED)

Division 08 Openings

08 44 12 M2 FORMED ALUMINUM PANEL (COLOR 2 UNLESS OTHERWISE NOTED)

08 80 00 G01 THERMAL CLEAR

G02 THERMAL FRITTED ON SURFACE 2

G03 THERMAL FRITTED ON SURFACE 2, SPANDREL COATING ON SURFACE 4

G04 THERMAL CLEAR, TEMPERED INSIDE LITE

G05 THERMAL CLEAR, FRITTED ON SURFACE 2, TEMPERED INSIDE LITE

G06 THERMAL CLEAR, TEMPERED BOTH LITES

G07 THERMAL CLEAR

G08 THERMAL CLEAR, TEMPERED BOTH LITES

08 91 19 L1 EXTRUDED ALUMINUM FIXED LOUVER (COLOR 2 UNLESS OTHERWISE NOTED)

## GENERAL NOTES

A. REFER TO WALL SECTIONS FOR VERTICAL DIMENSIONING AND KEYING OF HORIZONTAL JOINT DETAILS.

B. FLOOR ELEVATIONS SHOWN ARE REFERENCE ELEVATIONS FOR THIS EMERGENCY DEPARTMENT AND CANCER CENTER EXPANSION ONLY. FLOOR ELEVATIONS VARY AT EXISTING HOSPITAL WINGS. FLOOR ELEVATIONS VARY AT NORTH CORE AND TRANSITIONS TO EXISTING BUILDINGS.

## KEY NOTES

① ALUMINUM DOOR PER 08 41 43, COLOR 13.

② COPING TO BE PAINTED COLOR 13 PER SPEC.

## MATERIAL LEGEND

'X' DESIGNATES GENERAL CATEGORY OF MATERIAL

G = GLAZING

M = METAL PANEL

L = LOUVER

N' DESIGNATES SPECIFIC MATERIAL TYPE - SEE SPECIFICATIONS

GIFFIN • BOLTE • JURGENS, P.C.  
ARCHITECTS815 S.W. SECOND AVENUE • PORTLAND, OREGON 97204  
(503) 233-0992 • www.gbjarch.com • FAX (503) 294-3961MultiCare  
EMERGENCY DEPARTMENT & CANCER CENTER EXPANSION  
TACOMA, WASHINGTON

△ CCD 01

12-17-2008

Date 09-26-2008

Scale 3/32" = 1'-0"

Drawn By BPSC

Job No. 4034

CURTAIN WALL /  
METAL PANEL  
ELEVATIONSA5  
18