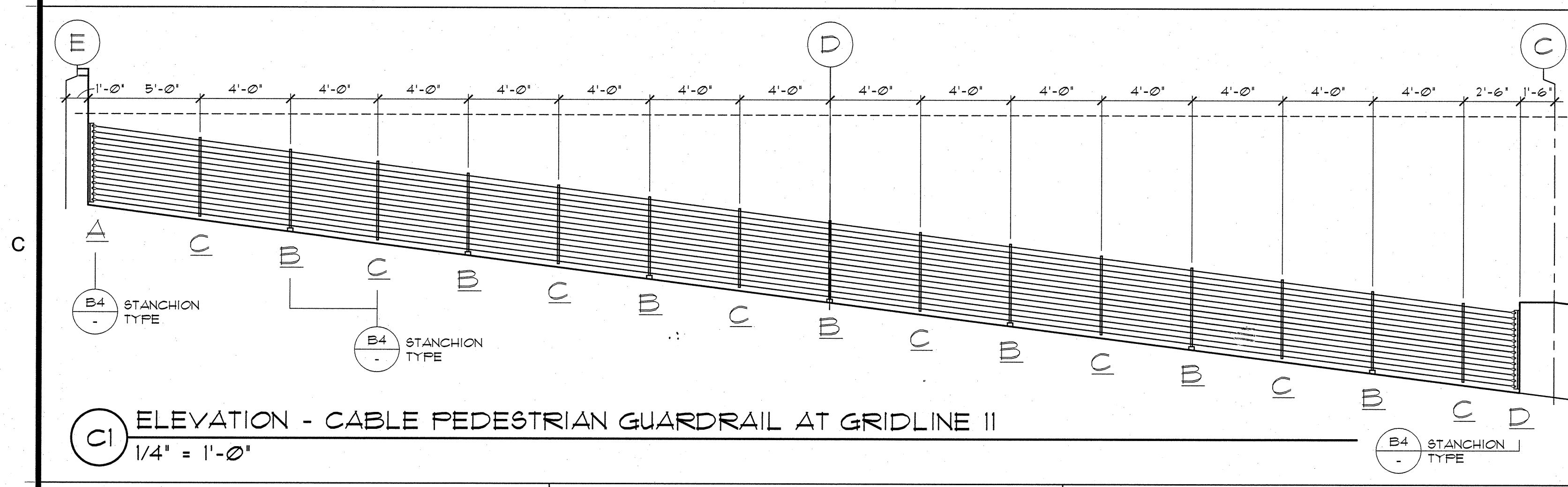
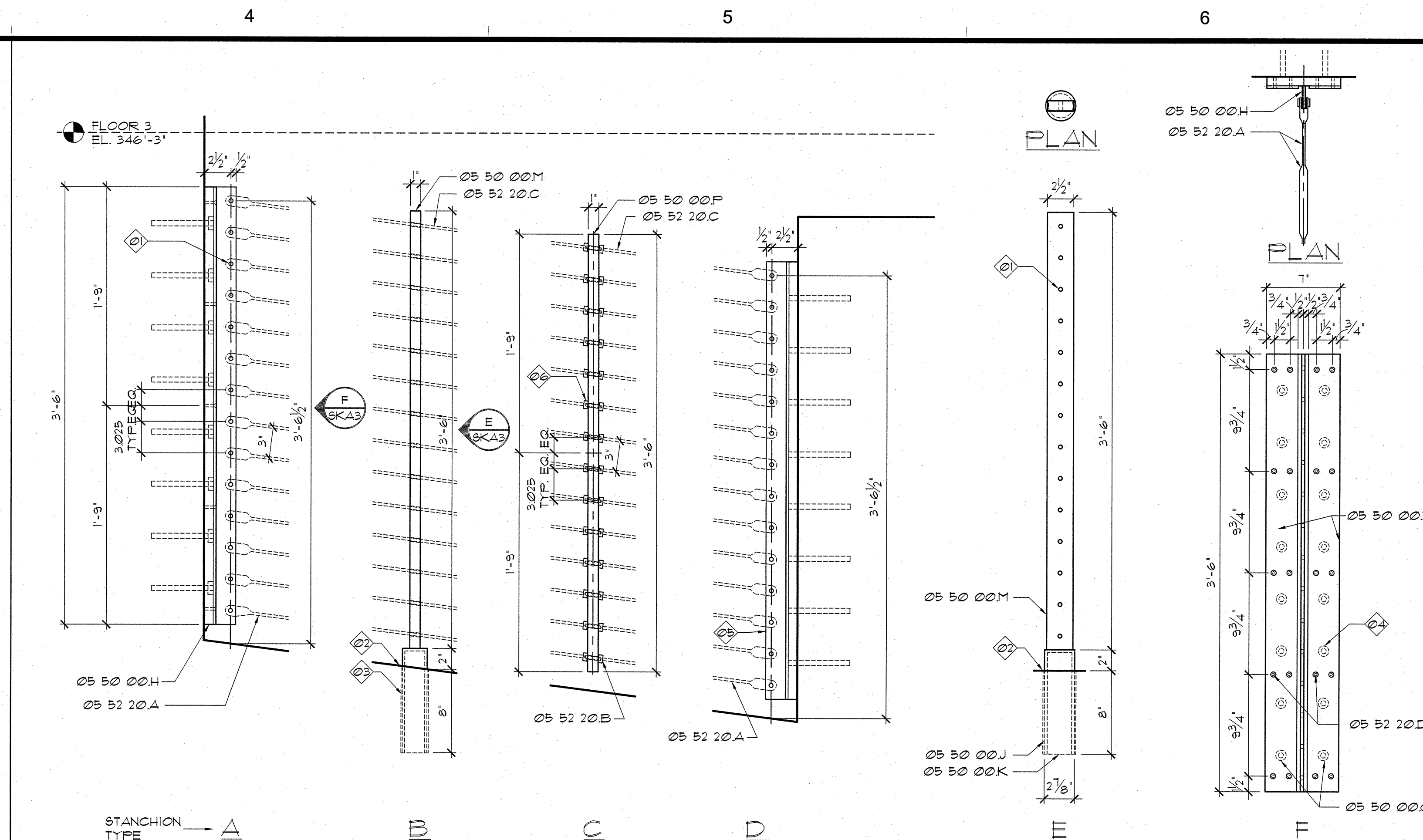


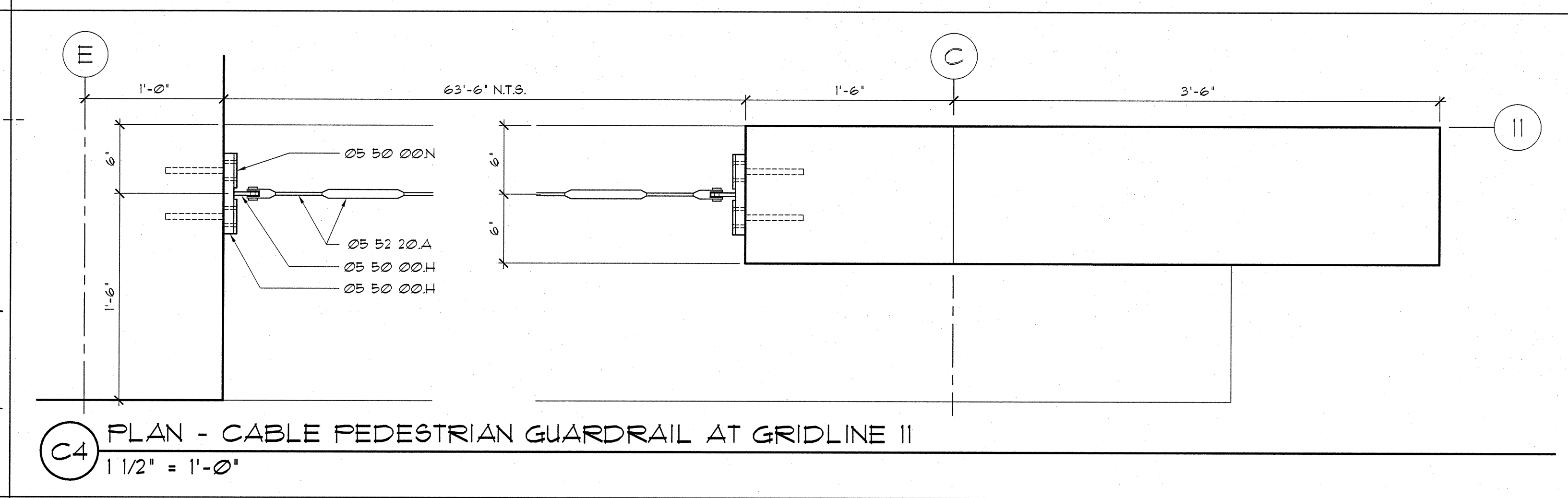
B1 CABLE PEDESTRIAN GUARDRAIL AT GRIDLINE 12 DETAILS
1 1/2" = 1'-0"



C1 ELEVATION - CABLE PEDESTRIAN GUARDRAIL AT GRIDLINE 11
1/4" = 1'-0"



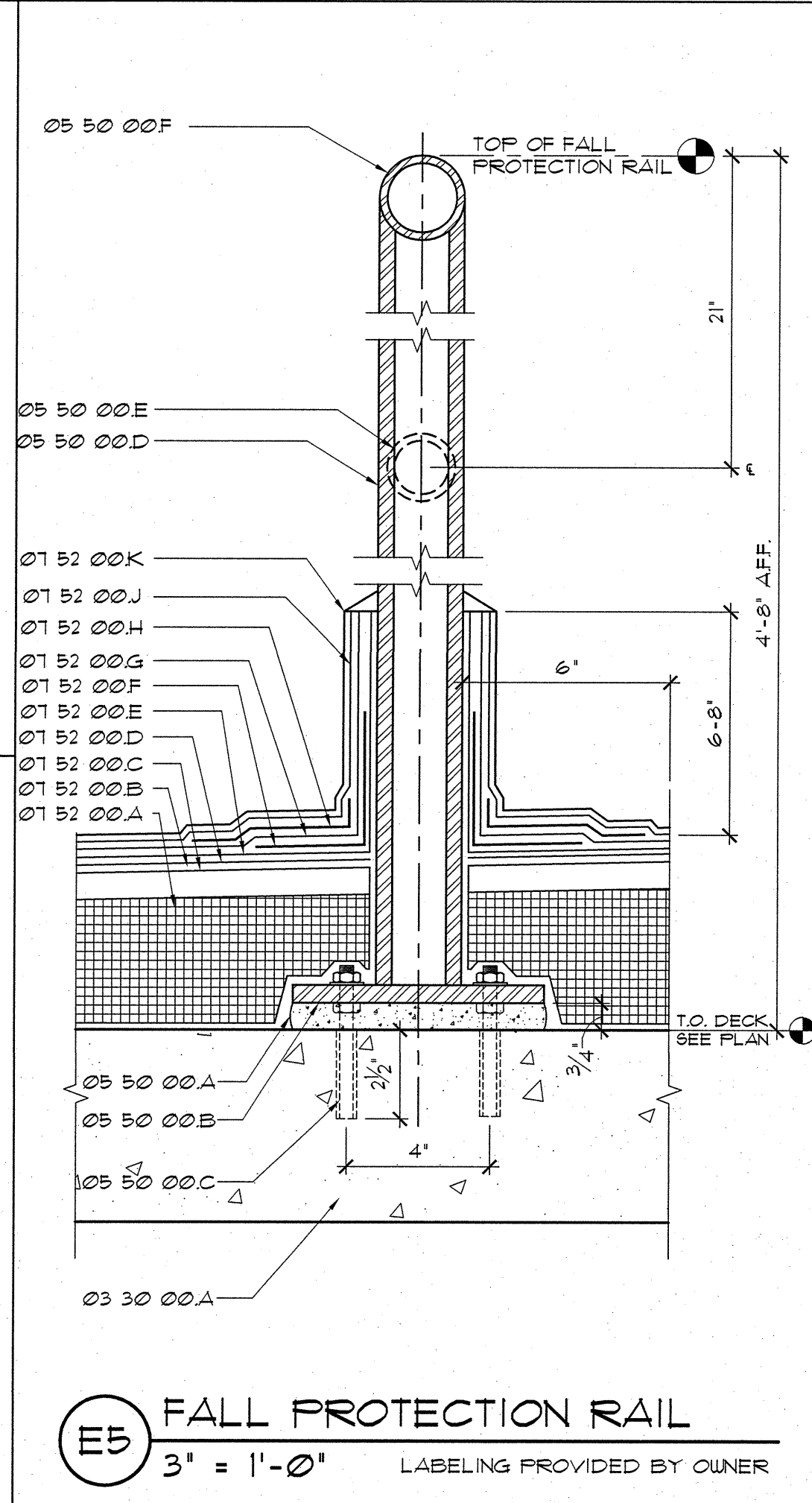
B4 CABLE PEDESTRIAN GUARDRAIL AT GRIDLINE 11 DETAILS
1 1/2" = 1'-0"



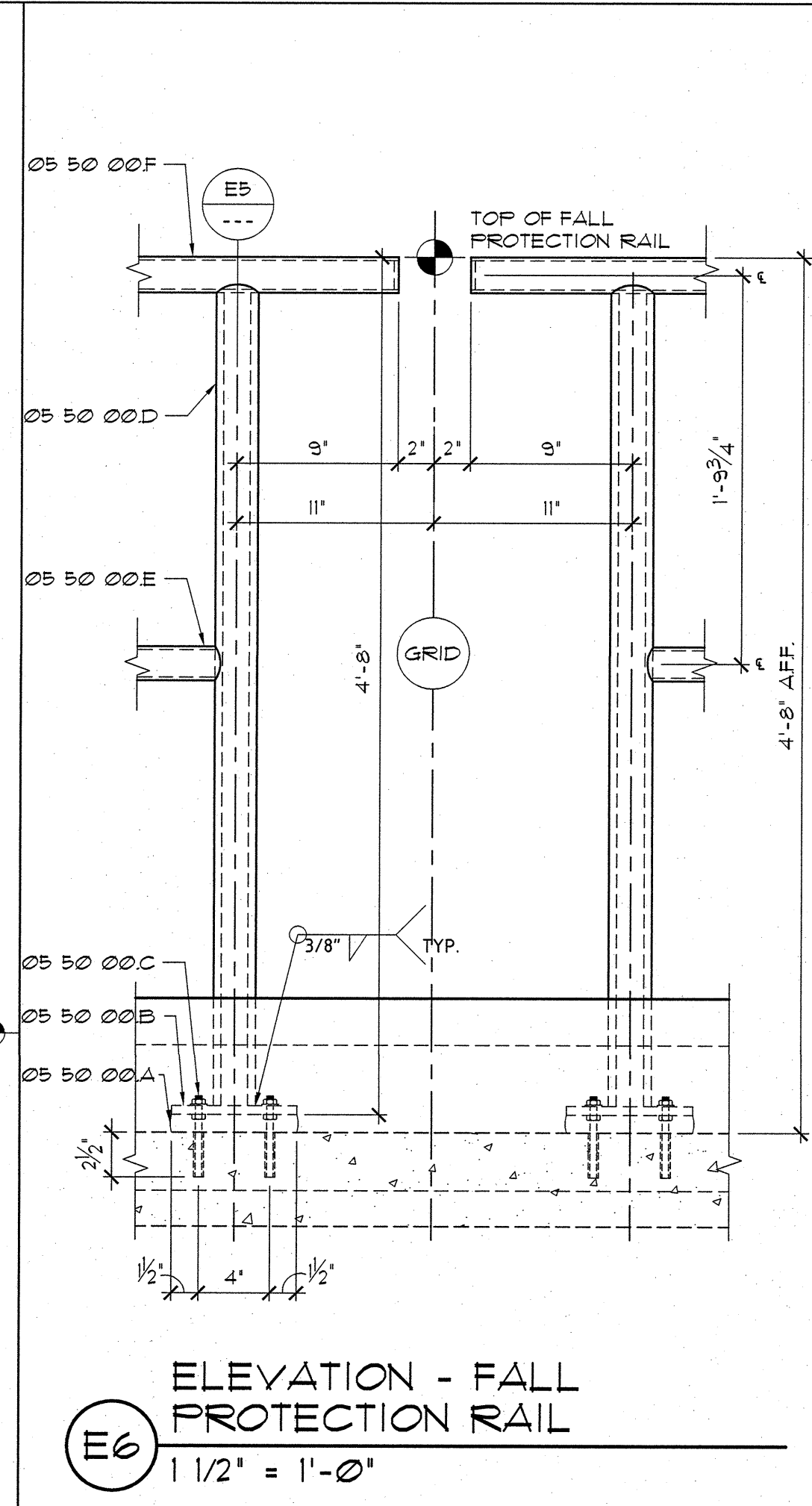
C4 PLAN - CABLE PEDESTRIAN GUARDRAIL AT GRIDLINE 11
1 1/2" = 1'-0"

- MATERIAL LEGEND**
- Division 03 Concrete**
- 03 30 00-A COMPOSITE CONCRETE FLOOR
- Division 05 Metals**
- 05 50 00-A 3/4" NON-SHRINK GROUT, SEE STRUCTURAL FOR REQUIREMENTS
- B 3/4" X 1" X 1" STEEL PLATE W/ (4) FOUR 3/8" DIA. EPOXY ANCHORS @ 4" O.C. GAGE, EMBED 2-1/2"
- C 3/8" DIA. EPOXY ANCHORS, EMBED 2-1/2". LEVEL BASE W/ NUTS EA. SIDE OF PLATE.
- D 2" DOUBLE EXTRA STRONG PIPE POST, MAX SPACING 8'-0" O.C. FINISH PER EACH'S
- E 1-1/2" STD. PIPE
- F 2" STD. PIPE TOP RAIL, PLUG END OF PIPE W/ 1/4" THICK STEEL PLUGS, GRIND SMOOTH AFTER WELDING, FINISH PER SECTION 05 06 05.
- G 1/2" DIA. EPOXY ANCHOR EA. SIDE - INSTALL (12) TWELVE ANCHORS MIN. (6) SIX ABOVE AND (6) SIX BELOW THE PLATE CENTERLINE MIN. CUT THREADED ROD FLUSH W/FACE OF 1/8" PLATE.
- H 1" X 1/8" STL. PLATE
- J 2-1/2" EXTRA STRONG STEEL PIPE
- K PLUG END OF PIPE W/ 1/4" STL. PLATE, WELD FULL, L. ROUND 1/2" x 1" TO MATCH 2-1/2" PIPE O.D.
- M 1" THICK STEEL PLATE
- N 1/4" THICK STEEL COVER PLATE AT EA. SIDE
- O 1/2" DIA. EPOXY ANCHOR EA. SIDE - INSTALL (10) TWELVE ANCHORS MIN. (5) SIX ABOVE AND (5) SIX BELOW THE PLATE CENTERLINE MIN. CUT THREADED ROD FLUSH W/FACE OF 1/8" PLATE.
- P 1' X 1/2" STEEL PLATE
- 05 52 20-A STAINLESS STEEL TURNBUCKLE WITH FIXED JAW END FORK
- B STAINLESS STEEL CRIMP TYPE FERRULE EA. SIDE TYP.
- C 6MM (1/2") X 1/8" STAINLESS STEEL WIRE TYP.
- D 5/16" - 18 HEX FH SCREWS (20) TWENTY PLACES.
- E 5/16" - 18 HEX FH SCREWS (16) SIXTEEN PLACES.
- Division 07 Thermal & Moisture Protection**
- 07 52 00-A TAPERED RIGID INSULATION
- B PERLITE COVERBOARD, 3/4" IN. THICK, SEAL COATED
- C FIELD BASE MEMBRANE
- D FIELD GAP MEMBRANE FLY
- E ALKAN FLASHING BASE COAT, 20 MILS.
- F ALKAN POLYFLEECE REINFORCEMENT, 1ST. CUT, VERTICAL WRAP WITH 1 IN. FINGERS EMBEDDED INTO BASE COAT WITHOUT WRINKLES OR FOLDS.
- G ALKAN FLASHING BASE COAT 2ND. LAYER, 16 MILS.
- H ROUNDED ALKAN POLYFLEECE REINFORCEMENT W/ UNDERSIZED HOLE, TURNING UP VERTICAL 1/2" EMBED INTO BASE COAT 2ND LAYER W/O WRINKLES OR FOLDS
- J ALKAN BASE COAT 3RD LAYER, 16 MILS.
- K FLASHING FINISH COAT 20 MILS. W/ ALUMINIZER-24 MILS (16 DRY)

- GENERAL NOTES**
- A. ALL STEEL TO BE HOT DIP GALVANIZED AFTER FABRICATION TYP.
- B. ALL CABLE SYSTEM HARDWARE TO BE STAINLESS STEEL.
- C. STAINLESS STEEL CABLE RAILS PROVIDE PEDESTRIAN GUARDRAILS ONLY AND ARE NOT INTENDED TO ARREST ARRANT VEHICLES.
- SHEET NOTES**
1. SIZE HOLE DIAMETER AS REQUIRED BY CABLE SYSTEM HARDWARE MANUFACTURER TO ALLOW FOR CLEARANCE OF TURN BUCKLE PIN AND HOT GALVANIZING. ENLARGEMENT OR HOLES AFTER GALVANIZING IS NOT ACCEPTABLE.
2. CORE DRILL ROUND HOLE AND EPOXY GROUT PER MANUFACTURER SPECIFICATIONS.
3. 1/8" GAP TYP. ALL AROUND.
4. BOLT HEADS COVERED BY PLATE.
5. CONSTRUCT SAME AS STANCHION TYPE 'A' OF THIS DETAIL.
6. SIZE HOLE DIAMETER AS REQUIRED BY CABLE SYSTEM HARDWARE MANUFACTURER TO ALLOW FOR CLEARANCE OF CABLE PIN AND HOT GALVANIZING. ENLARGEMENT OR HOLES AFTER GALVANIZING IS NOT ACCEPTABLE.



E5 FALL PROTECTION RAIL
3" = 1'-0" LABELING PROVIDED BY OWNER



E6 ELEVATION - FALL PROTECTION RAIL
1 1/2" = 1'-0"