

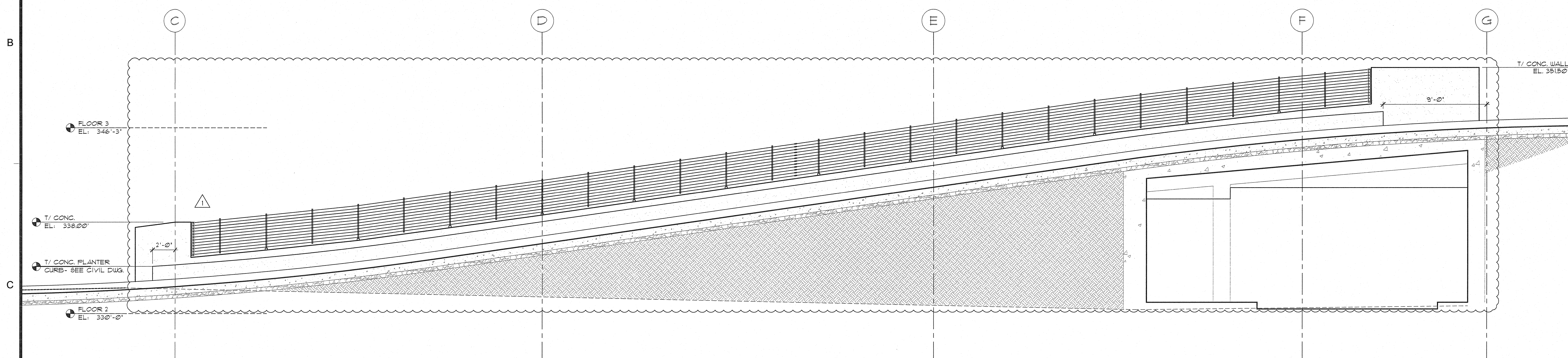
A1 ELEVATION - CONCRETE PLANTER
1/4" = 1'-0"

A3 NORTH ELEVATION - CONCRETE PLANTERS
1/4" = 1'-0"

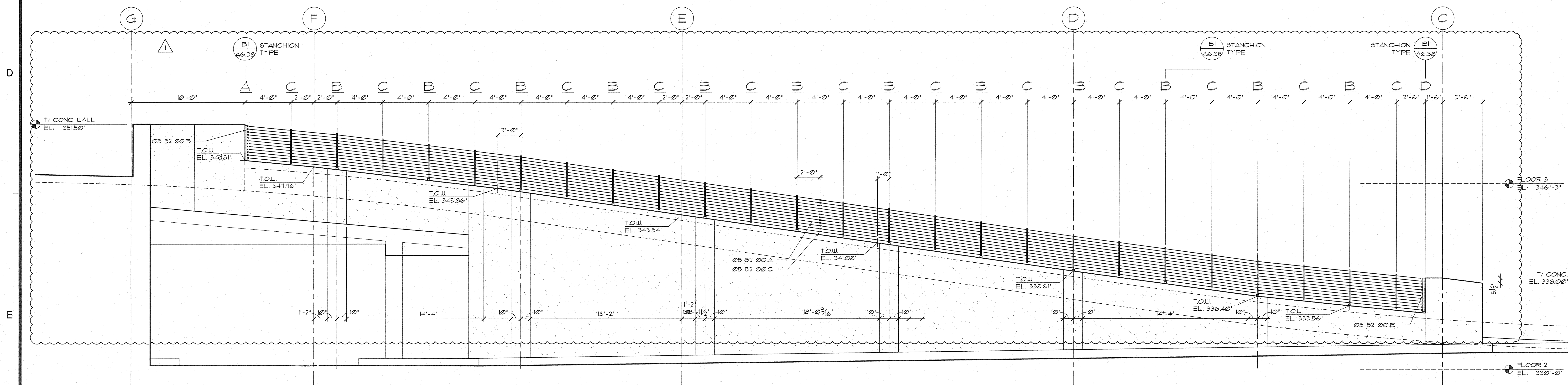
MATERIAL LEGEND

Division 05 Metals

05 52 20 A STAINLESS STEEL CABLE RAILING SYSTEM
B STAINLESS STEEL CABLE TURNBUCKLE W/ FORK
C STAINLESS STEEL TURNBUCKLE



C1 ELEVATION - CONCRETE RETAINING WALL / PLANTER @ 5TH STREET RAMP LOOKING SOUTH - SEE E1 FOR CABLE RAILING STANCHION TYPE & DIMENSIONING
1/4" = 1'-0"



E1 ELEVATION - CONCRETE RETAINING WALL @ 5TH STREET RAMP LOOKING NORTH
1/4" = 1'-0"

GIFFIN • BOLTE • JURGENS
ARCHITECTS
815 S.W. SECOND AVENUE • PORTLAND, OREGON 97204
(503) 223-0992 www.gbjaarch.com FAX (503) 294-3961

REGISTERED ARCHITECT
HERB K. GIFFIN
STATE OF WASHINGTON

MultiCare
EMERGENCY DEPARTMENT & CANCER CENTER EXPANSION
TACOMA, WASHINGTON

CCD 08	03-13-2009	Date	09-26-2008
		Scale	AS SHOWN
		Drawn By	KR/RJS
		Job No.	4034

PLAZA & PLANTER ELEVATIONS

A6
40