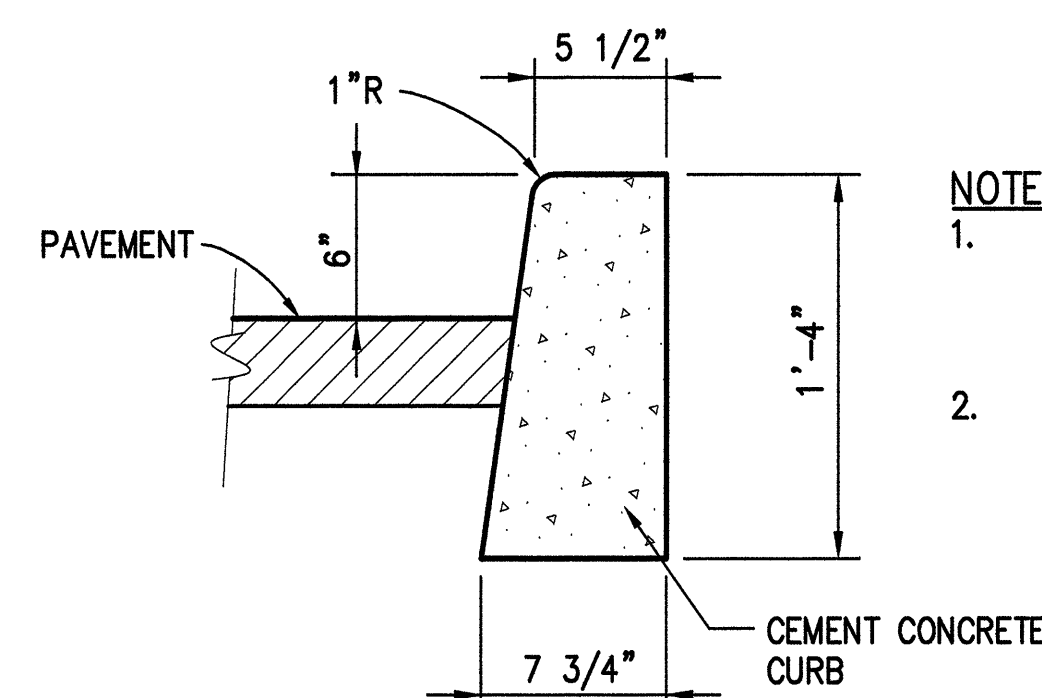


- NOTE:
1. CONSTRUCT CURB AND GUTTER JOINTS IN ACCORDANCE WITH WSDOT STD. SPEC. 8-04.3(1)
 2. CURBS SHALL BE TACK COATED WITH AN ASPHALT EMULSION PRIOR TO PLACEMENT OF ASPHALT CONCRETE.

INTEGRAL CURB AND GUTTER DETAIL

NTS

1
C6.06

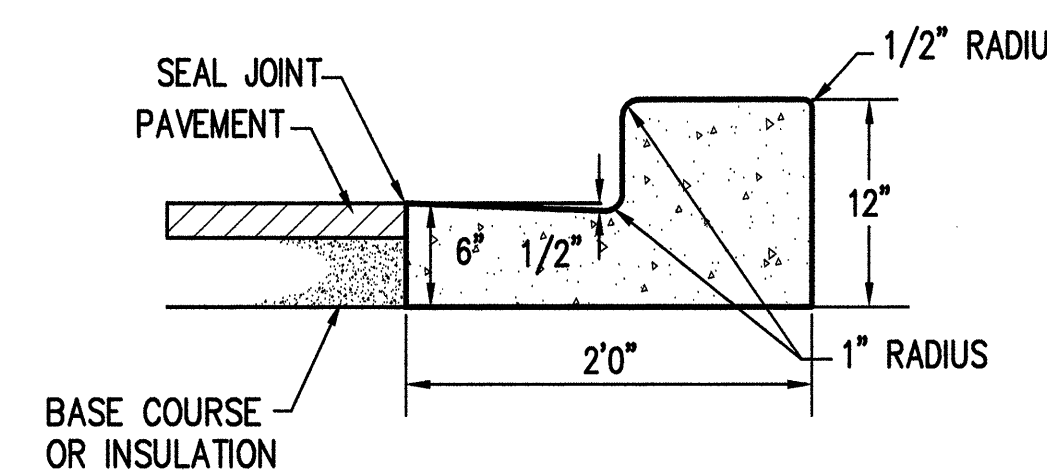


- NOTE:
1. CONSTRUCT CURB AND GUTTER JOINTS IN ACCORDANCE WITH WSDOT STD. SPEC. 8-04.3(1)
 2. CURBS SHALL BE TACK COATED WITH AN ASPHALT EMULSION PRIOR TO PLACEMENT OF ASPHALT CONCRETE.

CONCRETE BARRIER CURB DETAIL

NTS

2
C6.06

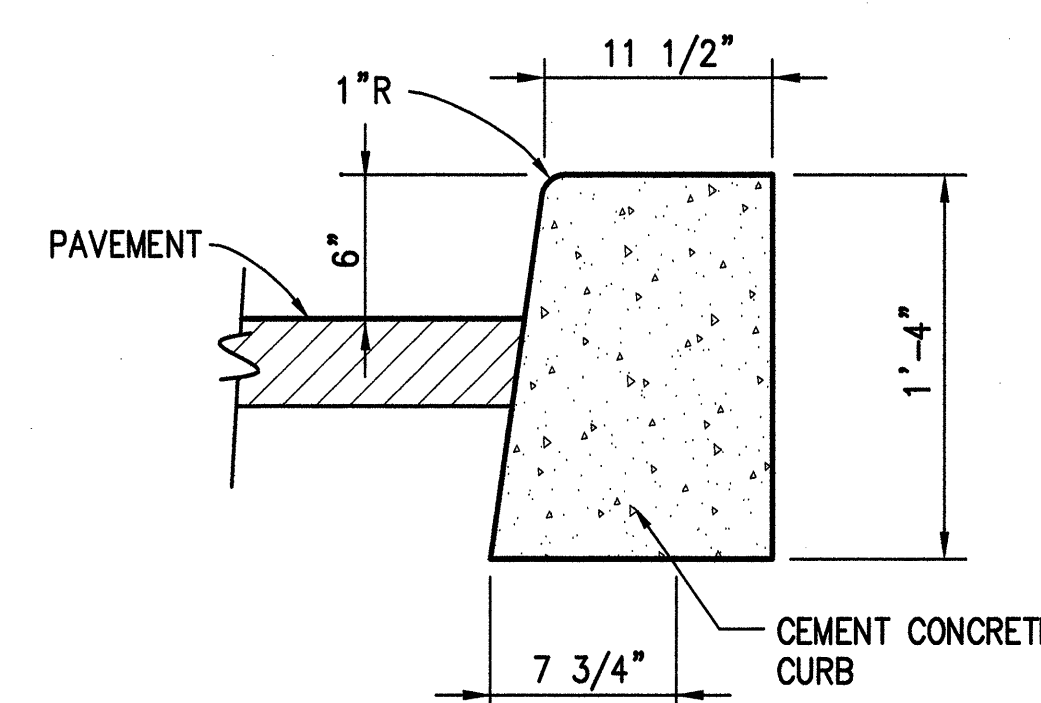


- NOTE:
1. CONSTRUCT CURB AND GUTTER JOINTS IN ACCORDANCE WITH WSDOT STD. SPEC. 8-04.3(1)
 2. CURBS SHALL BE TACK COATED WITH AN ASPHALT EMULSION PRIOR TO PLACEMENT OF ASPHALT CONCRETE.

1' INTEGRAL CURB AND GUTTER DETAIL

NTS

3
C6.06

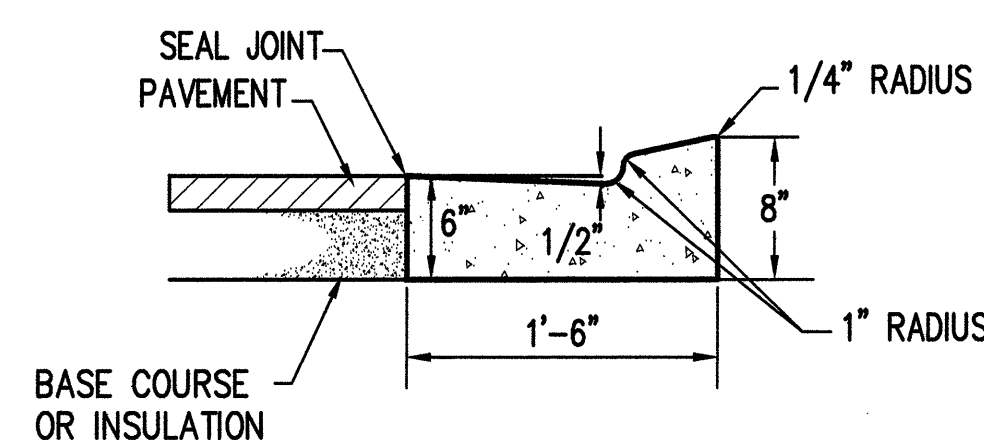


- NOTE:
1. CONSTRUCT CURB AND GUTTER JOINTS IN ACCORDANCE WITH WSDOT STD. SPEC. 8-04.3(1)

1' CONCRETE BARRIER CURB DETAIL

NTS

4
C6.06

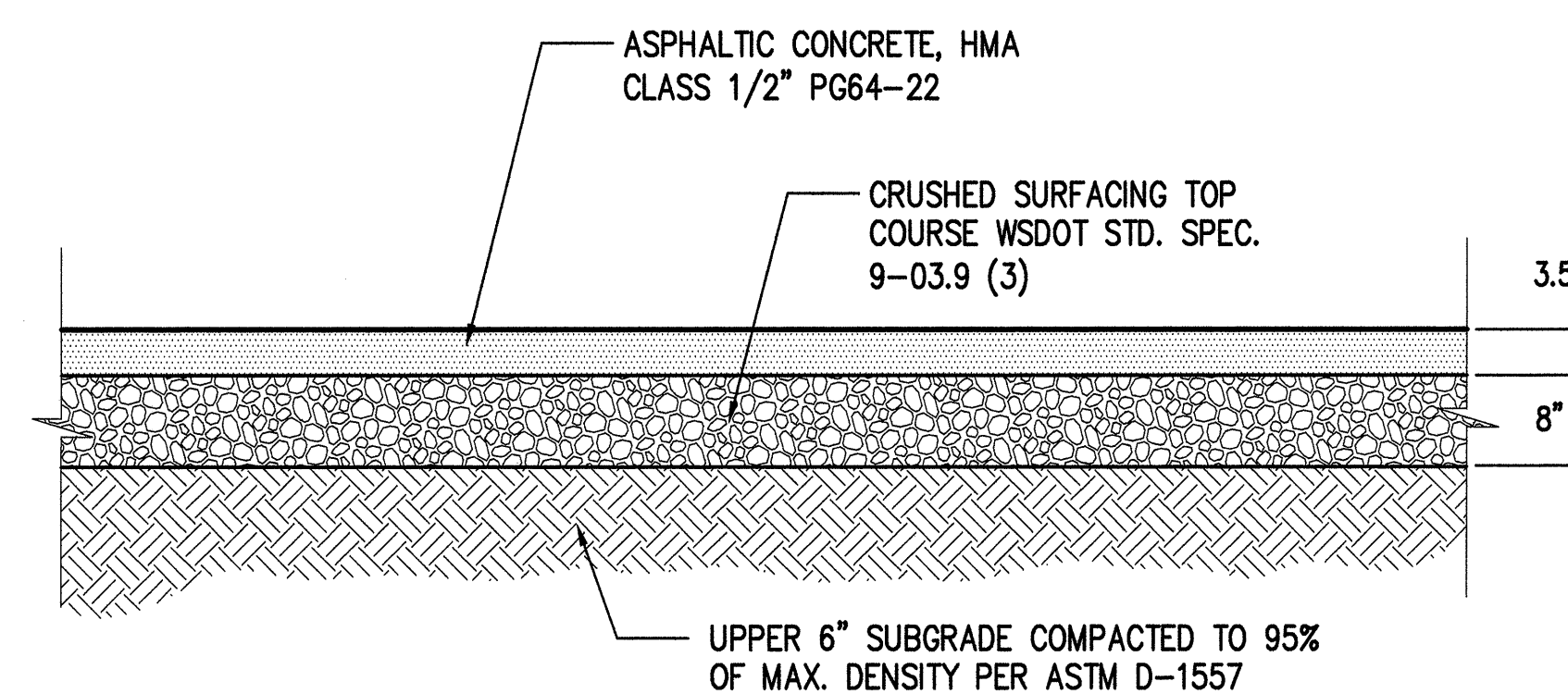


- NOTES:
1. CURBS SHALL BE TACK COATED WITH AN ASPHALT EMULSION PRIOR TO PLACEMENT OF ASPHALT CONCRETE.
 2. CONSTRUCT CURB AND GUTTER JOINTS IN ACCORDANCE WITH WSDOT STD. SPEC. 8-04.3(1)

MOUNTABLE CURB AND GUTTER DETAIL

NTS

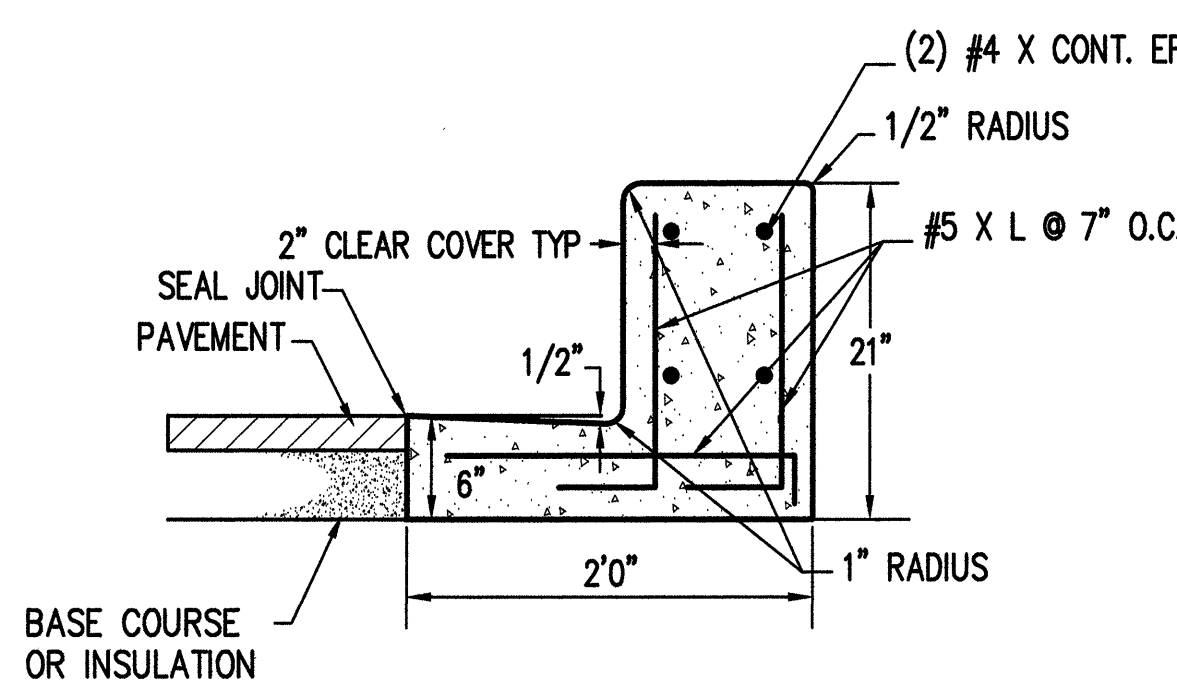
5
C6.06



ASPHALT PAVING DETAIL

NTS

6
C6.01

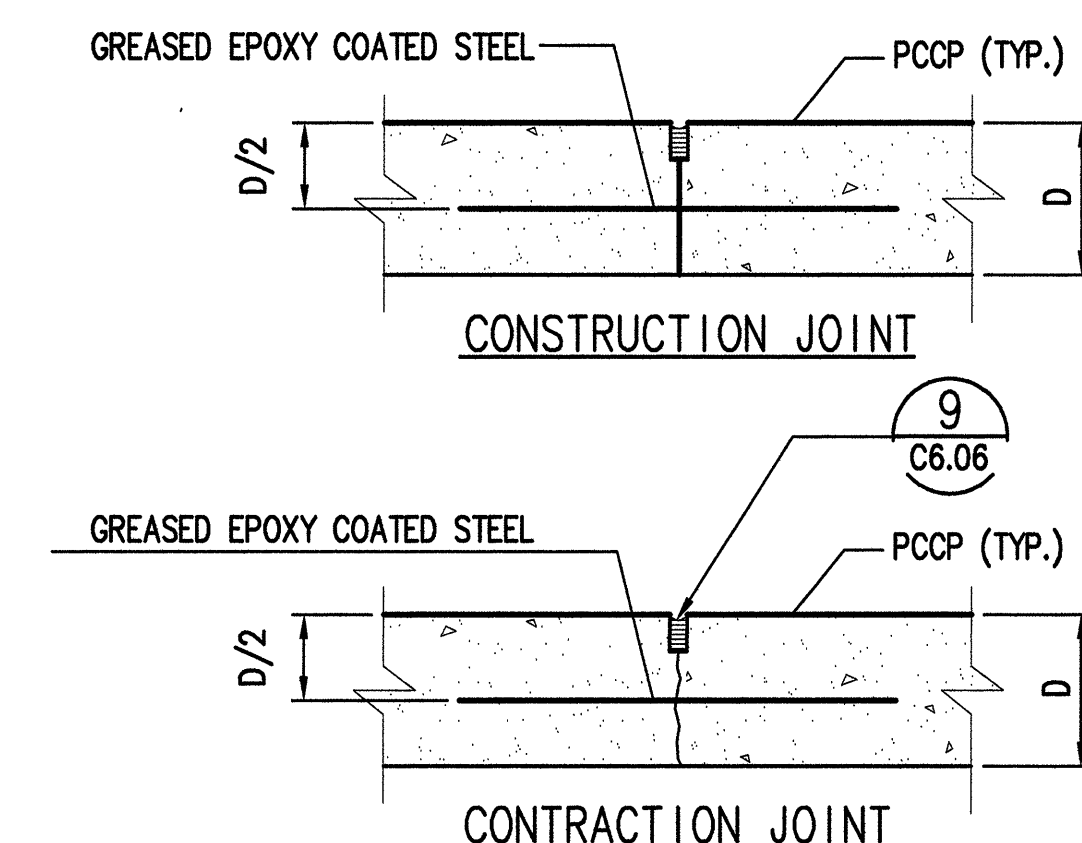


- NOTE:
1. CONSTRUCT CURB AND GUTTER JOINTS IN ACCORDANCE WITH WSDOT STD. SPEC. 8-04.3(1)
 2. CURBS SHALL BE TACK COATED WITH AN ASPHALT EMULSION PRIOR TO PLACEMENT OF ASPHALT CONCRETE.

TALL CURB AND GUTTER

NTS

7
C6.01

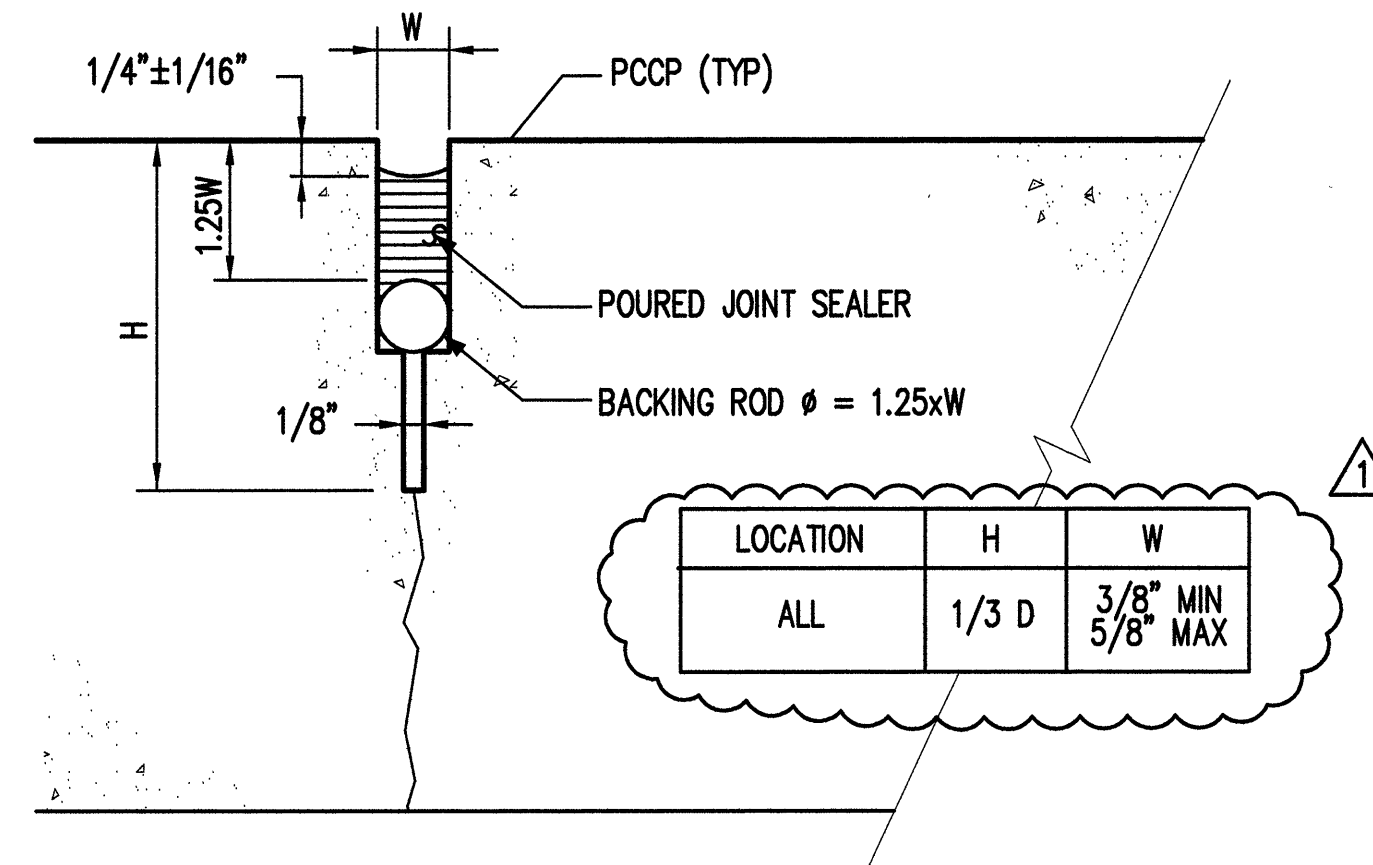


LOCATION	EPOXY COATED STEEL
ALL	3/4" DIA x 18" LONG, GRADE 60 SMOOTH DOWEL BAR @ 18" O.C.

CONTROL JOINTS DETAIL

NTS

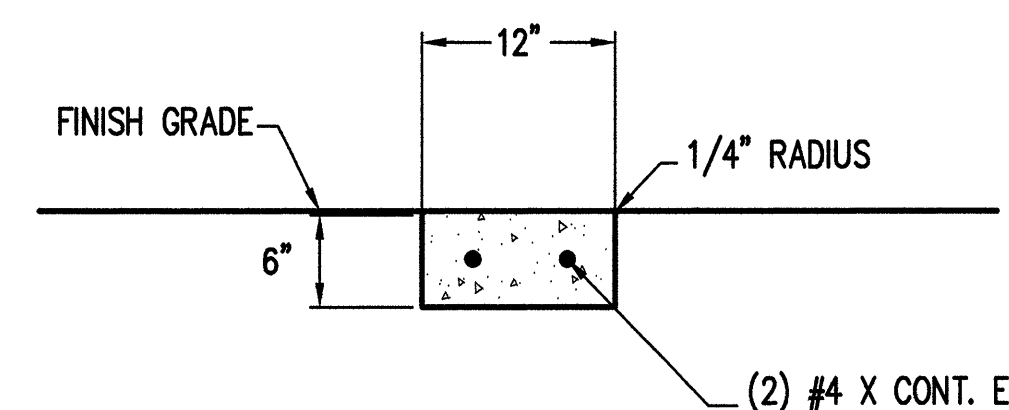
8
C6.06



JOINT SEAL DETAIL

NTS

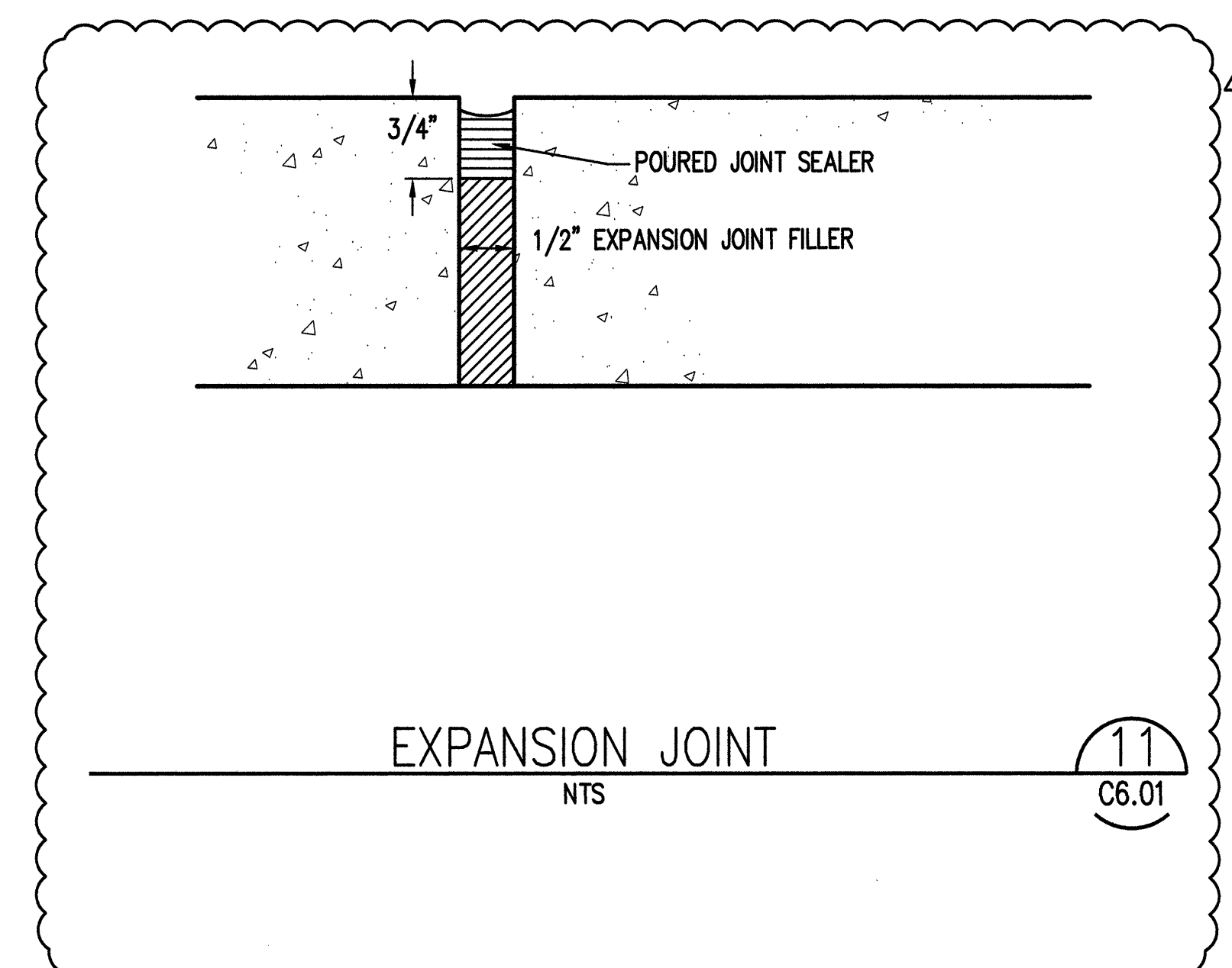
9
C6.06



1' WIDE FLUSH CURB

NTS

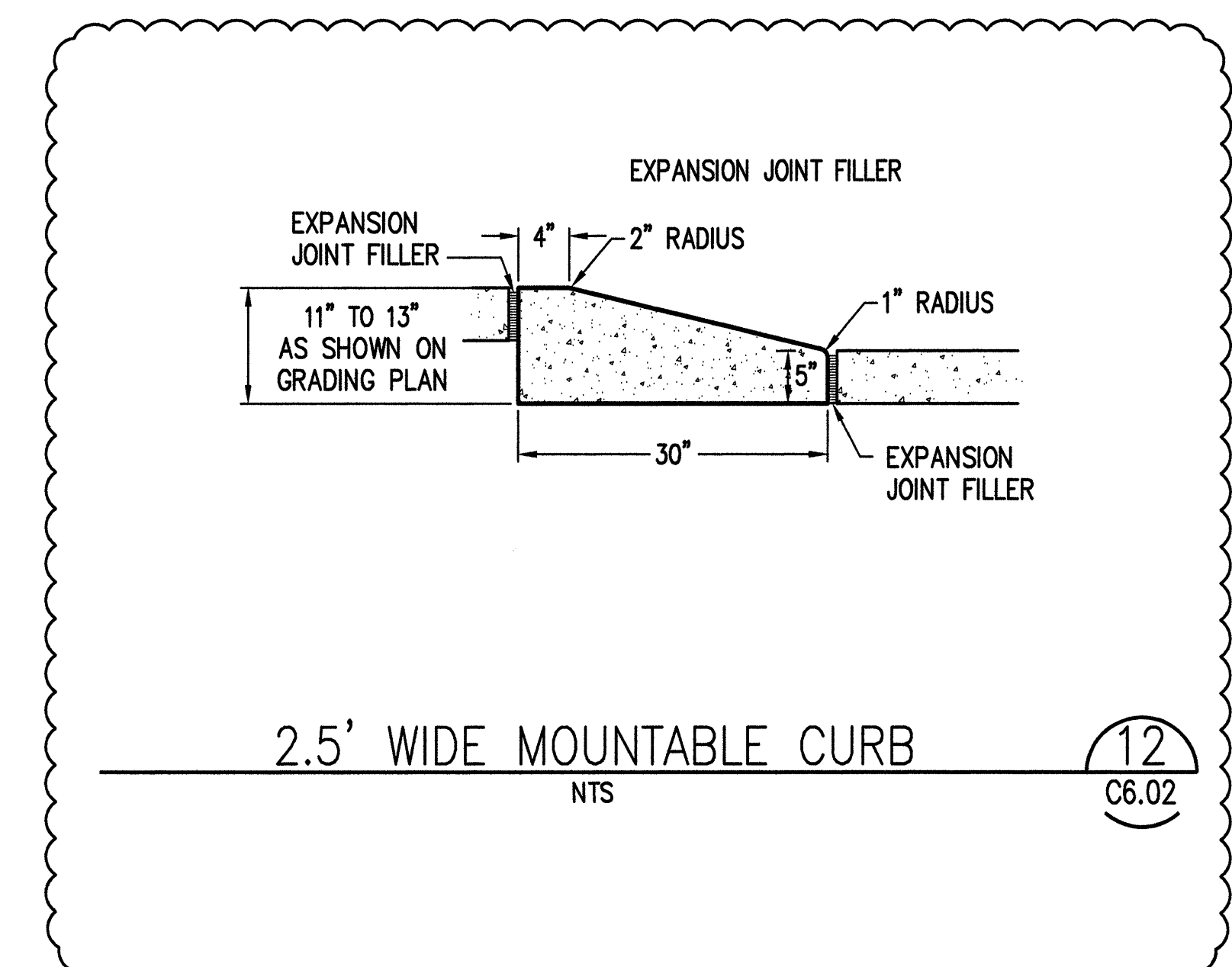
10
C6.01



EXPANSION JOINT

NTS

11
C6.01



2.5' WIDE MOUNTABLE CURB

NTS

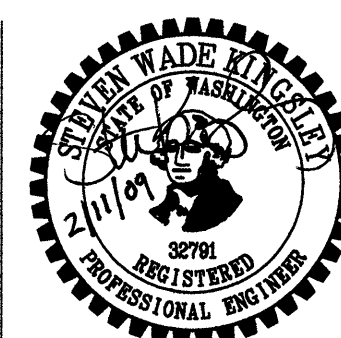
12
C6.02

kpff Consulting Engineers

1201 Pacific Avenue, Suite 800
Tacoma, Washington 98402
(253) 396-0150 Fax (253) 396-0162

GIFFIN • BOLTE • JURGENS
ARCHITECTS

815 S.W. SECOND AVENUE - PORTLAND, OREGON 97204
(503) 223-0992 www.gbjarch.com FAX (503) 294-3961



MultiCare

EMERGENCY DEPARTMENT & CANCER CENTER EXPANSION

TACOMA, WASHINGTON

CCD 07 2-20-2009

Date 09-26-2008

Scale

Drawn By

Job No. 4034

DETAILS

C6
06