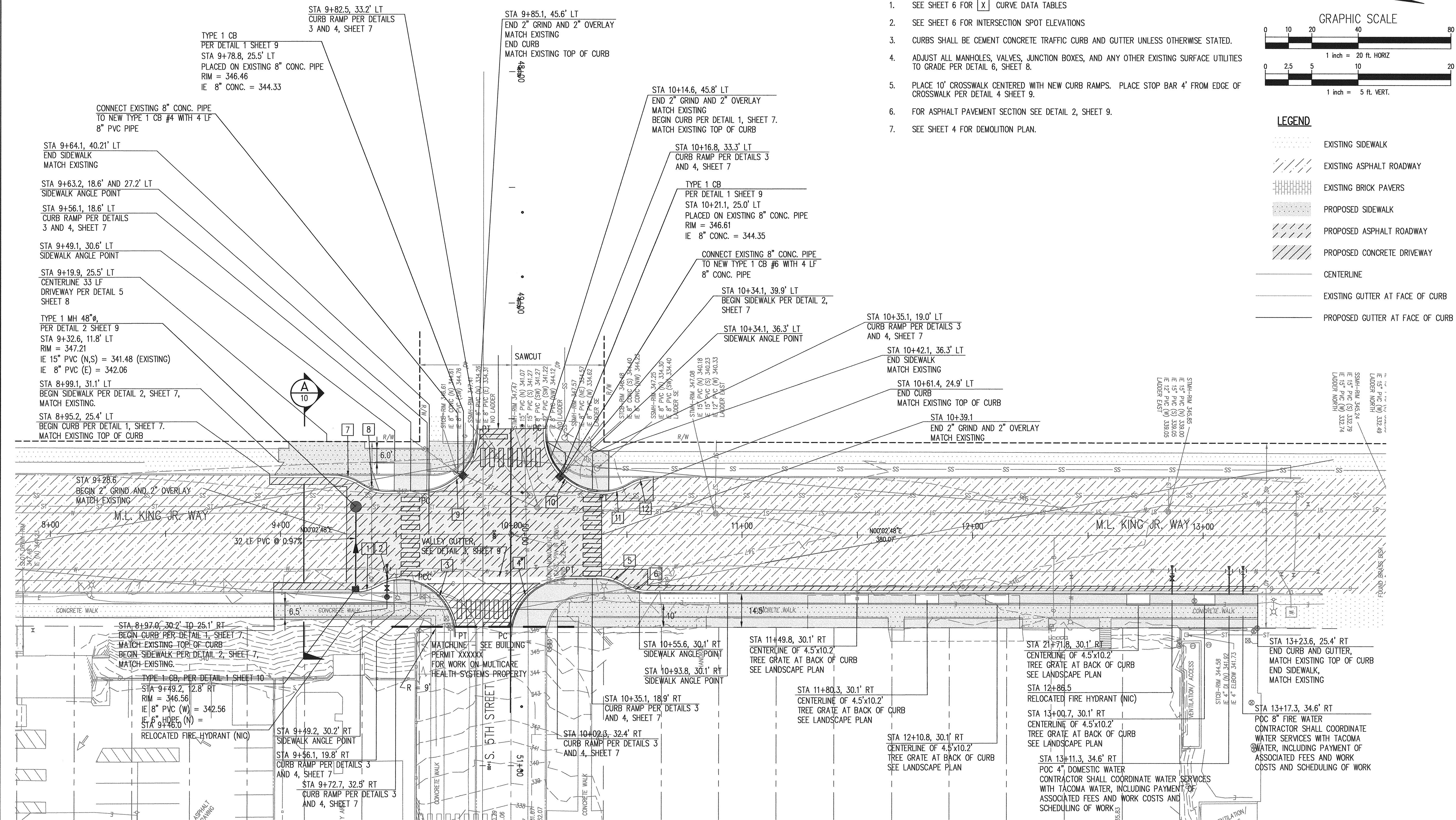
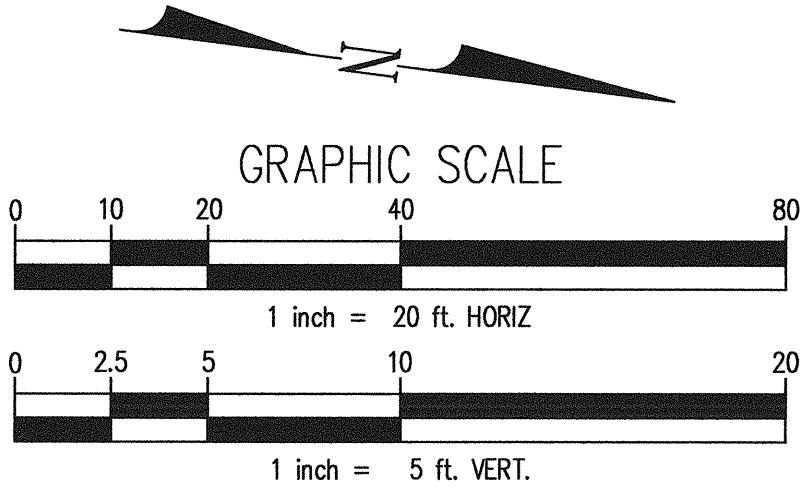


PLOTTED BY: oland DATE & TIME: Sep 24, 2008 - 1:27pm FILE: A:\106-1\166097 Multicare ED\Design\CAD\Draws\MLK-W Improvements.dwg



GENERAL NOTES:

- SEE SHEET 6 FOR [X] CURVE DATA TABLES
- SEE SHEET 6 FOR INTERSECTION SPOT ELEVATIONS
- CURBS SHALL BE CEMENT CONCRETE TRAFFIC CURB AND GUTTER UNLESS OTHERWISE STATED.
- ADJUST ALL MANHOLES, VALVES, JUNCTION BOXES, AND ANY OTHER EXISTING SURFACE UTILITIES TO GRADE PER DETAIL 6, SHEET 8.
- PLACE 10' CROSSWALK CENTERED WITH NEW CURB RAMPS. PLACE STOP BAR 4' FROM EDGE OF CROSSWALK PER DETAIL 4 SHEET 9.
- FOR ASPHALT PAVEMENT SECTION SEE DETAIL 2, SHEET 9.
- SEE SHEET 4 FOR DEMOLITION PLAN.



LEGEND

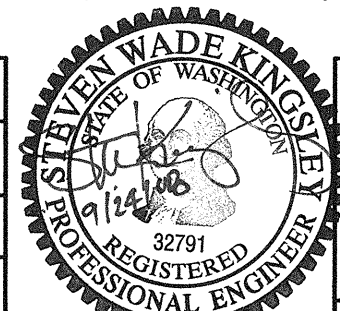
- EXISTING SIDEWALK
- EXISTING ASPHALT ROADWAY
- EXISTING BRICK PAVERS
- PROPOSED SIDEWALK
- PROPOSED ASPHALT ROADWAY
- PROPOSED CONCRETE DRIVEWAY
- CENTERLINE
- EXISTING GUTTER AT FACE OF CURB
- PROPOSED GUTTER AT FACE OF CURB

kpff Consulting Engineers
1201 Pacific Avenue, Suite 800
Tacoma, Washington 98402
(253) 396-0150 Fax (253) 396-0162

CALL 48 HOURS
BEFORE YOU DIG
1-800-424-5555

NO	REVISION	DATE	APPD

BY	DATE	FIELD BOOKS
ABO	9/26/08	
REB		



CITY OF TACOMA DEPARTMENT OF PUBLIC WORKS MULTICARE MEDICAL CENTER EMERGENCY DEPARTMENT & CANCER CARE CENTER EXPANSION SOUTH MARTIN LUTHER KING WAY AND SOUTH 5TH STREET	SHEET NO. 5 OF 9
--	---------------------