

CURVE DATA TABLE - 1				
SHEET 5				
RADIUS	Δ ANGLE	LENGTH		
20.00'	30°55'57"	10.79'		
PC 9+32.14	25.09' RT	FL EL	346.56	LP
1/4 POINT		FL EL		
1/2 POINT		FL EL	346.61	
3/4 POINT		FL EL		
PRC 9+42.43	22.28' RT	FL EL	346.65	

CURVE DATA TABLE - 2				
SHEET 5				
RADIUS	Δ ANGLE	LENGTH		
20.00'	55°53'16"	19.51'		
PRC 9+42.43	22.28' RT	FL EL	346.65	
1/4 POINT		FL EL	346.70	
1/2 POINT		FL EL	346.74	
3/4 POINT		FL EL	346.58	
PCC 9+61.15	21.36' RT	FL EL	346.41	

CURVE DATA TABLE - 3				
SHEET 5				
RADIUS	Δ ANGLE	LENGTH		
25.00'	64°41'18"	28.23'		
PCC 9+61.15	28.23' RT	FL EL	346.41	
1/4 POINT		FL EL	346.17	
1/2 POINT		FL EL	345.93	
3/4 POINT		FL EL	345.69	
PT 9+75.79	43.98' RT	FL EL	345.44	

CURVE DATA TABLE - 4				
SHEET 5				
RADIUS	Δ ANGLE	LENGTH		
25.00'	90°02'45"	39.29'		
PC 9+99.79	44.02' RT	FL EL	345.44	
1/4 POINT		FL EL	345.86	
1/2 POINT		FL EL	346.27	
3/4 POINT		FL EL	346.69	
PT 10+24.79	19.00' RT	FL EL	347.10	

CURVE DATA TABLE - 5				
SHEET 5				
RADIUS	Δ ANGLE	LENGTH		
20.00'	32°07'07"	11.21'		
PC 10+37.92	19.00' RT	FL EL	346.90	
1/4 POINT		FL EL		
1/2 POINT		FL EL	346.81	
3/4 POINT		FL EL		
PRC 10+48.56	22.05' RT	FL EL	346.72	

CURVE DATA TABLE - 6				
SHEET 5				
RADIUS	Δ ANGLE	LENGTH		
20.00'	32°20'19"	11.14'		
PRC 10+48.56	22.05' RT	FL EL	346.72	
1/4 POINT		FL EL		
1/2 POINT		FL EL	346.64	
3/4 POINT		FL EL		
PT 10+59.13	25.06' RT	FL EL	346.55	

CURVE DATA TABLE - 7				
SHEET 5				
RADIUS	Δ ANGLE	LENGTH		
20.00'	34°09'17"	11.93'		
PC 9+23.22	25.46' LT	FL EL	346.73	
1/4 POINT		FL EL		
1/2 POINT		FL EL	346.70	
3/4 POINT		FL EL		
PRC 9+34.46	21.98' LT	FL EL	346.67	

CURVE DATA TABLE - 8				
SHEET 5				
RADIUS	Δ ANGLE	LENGTH		
20.00'	34°21'27"	11.99'		
PRC 9+34.46	21.98' LT	FL EL	346.67	
1/4 POINT		FL EL		
1/2 POINT		FL EL	346.64	
3/4 POINT		FL EL		
PT 9+45.75	18.5' LT	FL EL	346.61	

CURVE DATA TABLE - 9				
SHEET 5				
RADIUS	Δ ANGLE	LENGTH		
25.00'	87°39'09"	38.25'		
PC 9+60.05	18.5' LT	FL EL	346.56	
1/4 POINT		FL EL	346.51	
1/2 POINT		FL EL	346.46	
3/4 POINT		FL EL	346.66	
PT 9+85.03	42.48' LT	FL EL	346.85	

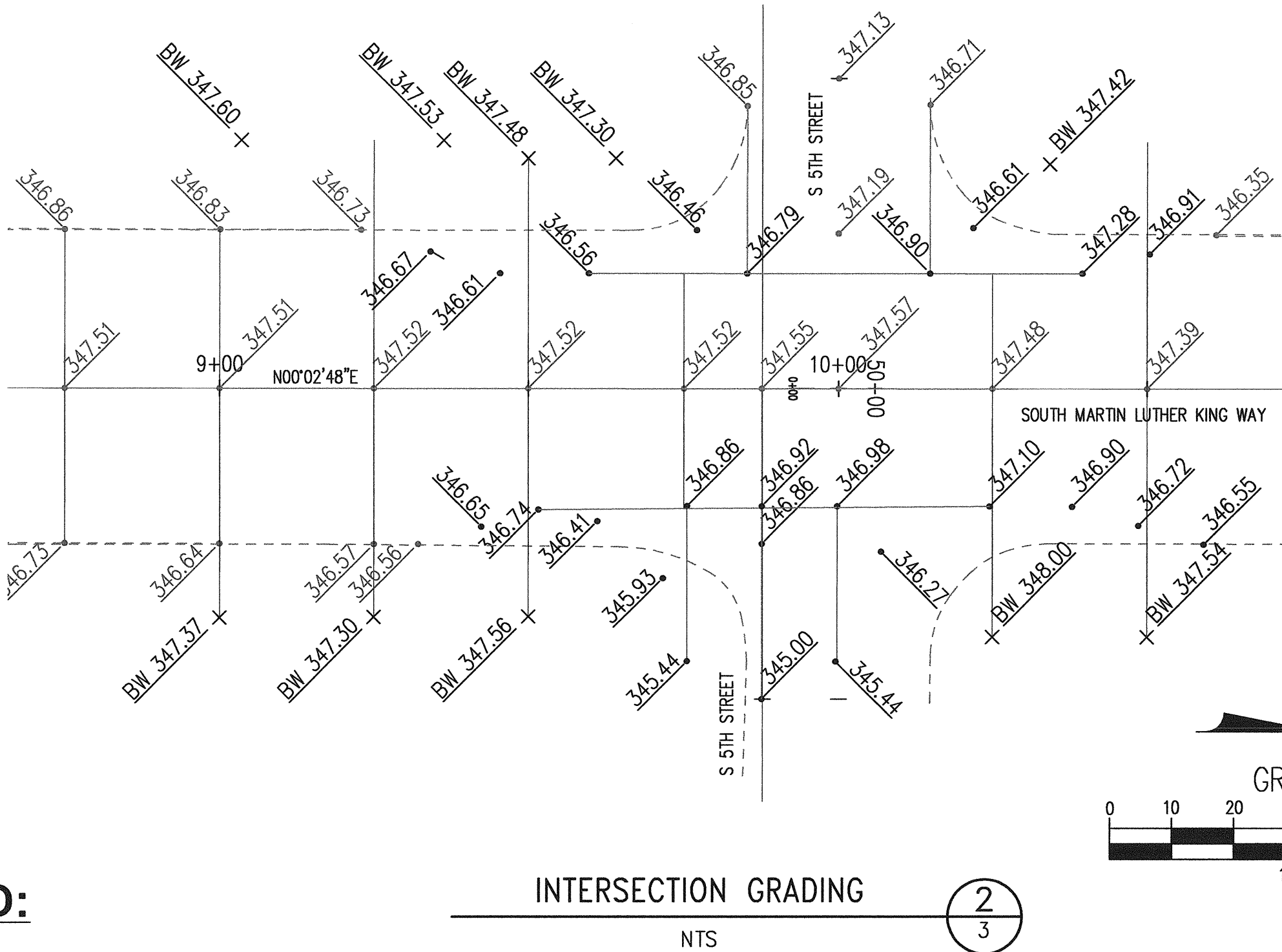
CURVE DATA TABLE - 10				
SHEET 5				
RADIUS	Δ ANGLE	LENGTH		
25.00'	90°06'02"	39.31'		
PC 10+14.81	43.54' LT	FL EL	346.71	
1/4 POINT		FL EL	346.66	
1/2 POINT		FL EL	346.61	
3/4 POINT		FL EL	346.95	
PT 10+39.81	18.5' LT	FL EL	347.28	

CURVE DATA TABLE - 11				
SHEET 5				
RADIUS	Δ ANGLE	LENGTH		
20.00'	32°23'11"	11.31'		
PC 10+39.93	18.5' LT	FL EL	347.27	
1/4 POINT		FL EL		
1/2 POINT		FL EL	347.09	
3/4 POINT		FL EL		
PRC 10+50.64	21.61' LT	FL EL	346.91	

CURVE DATA TABLE - 12				
SHEET 5				
RADIUS	Δ ANGLE	LENGTH		
20.00'	32°23'11"	11.31'		
PRC 10+50.64	21.61' LT	FL EL	346.91	
1/4 POINT		FL EL		
1/2 POINT		FL EL	346.63	
3/4 POINT		FL EL		
PT 10+61.35	24.72' LT	FL EL	346.35	

LEGEND:

- 347.00  
347.00  
-----  
-----
- EXISTING SPOT ELEVATION  
PROPOSED SPOT ELEVATION AT FACE OF CURB  
EXISTING FACE OF CURB  
PROPOSED FACE OF CURB



**kpff** Consulting Engineers  
1201 Pacific Avenue, Suite 800  
Tacoma, Washington 98402  
(253) 396-0150 Fax (253) 396-0162

CALL 48 HOURS  
BEFORE YOU DIG  
1-800-424-5555

NO	REVISION	DATE	APPD

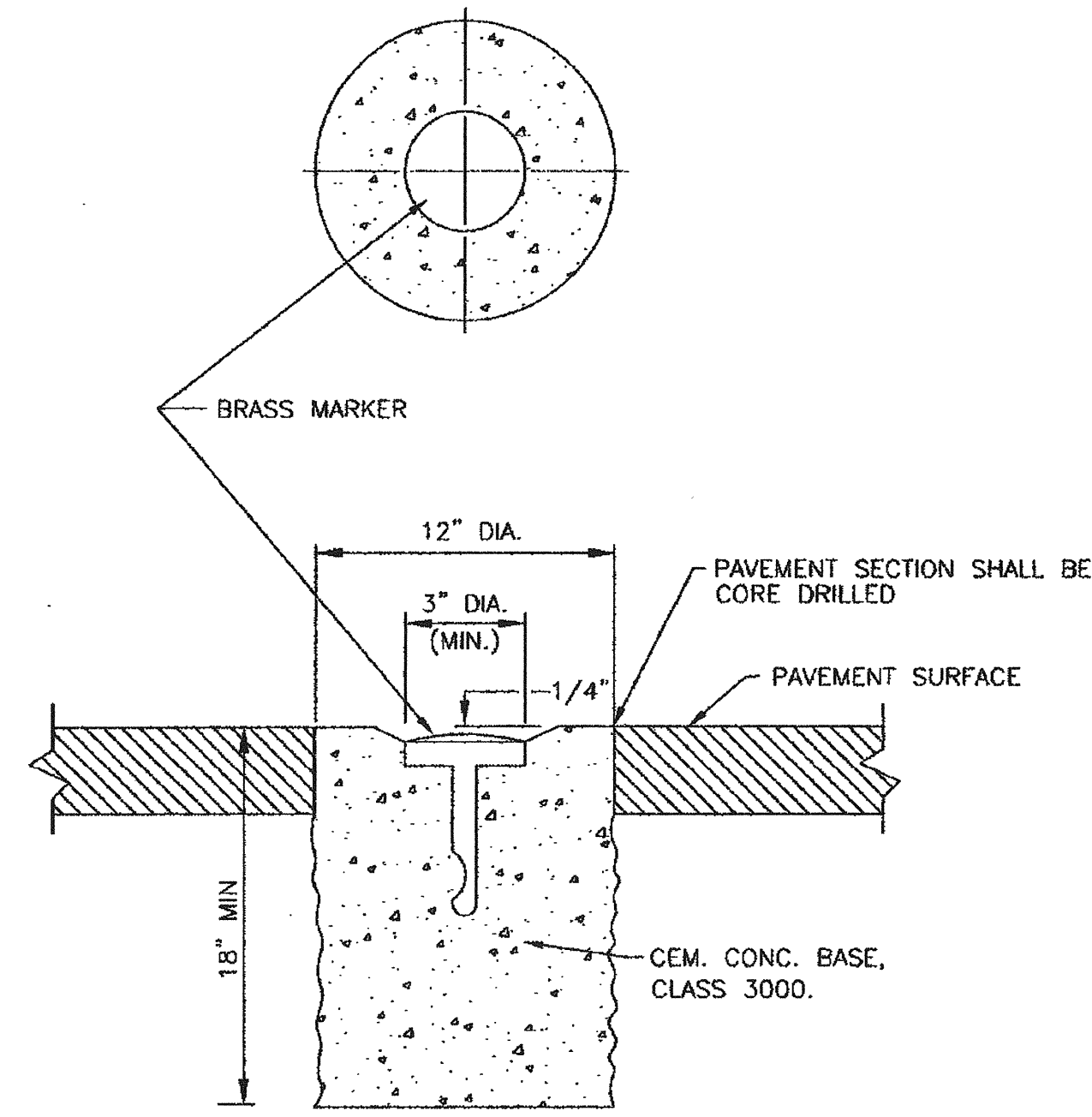
FINAL  
CONSTRUCTION  
CHECKED  
BY  
DATE  
FIELD  
BOOKS

DATE 9/26/08	SCALE AS SHOWN
DESIGNED ABO	CHECKED SWK
DRAWN REB	FILE NAME



CITY OF TACOMA  
DEPARTMENT OF PUBLIC WORKS  
MULTICARE MEDICAL CENTER  
EMERGENCY DEPARTMENT & CANCER CARE CENTER EXPANSION  
CITY OF TACOMA STANDARD PLANS

SHEET NO.	6	OF	9
-----------	---	----	---



- NOTES:
- CONCRETE BASE SHALL BE POURED IN PLACE. HAND MIXED CONCRETE IS PROHIBITED. CONCRETE BASE NEED NOT BE FORMED.
  - NOTICE TO SURVEYORS: ANY MONUMENT SET IN THE CITY OF TACOMA MUST BEAR THE LAND SURVEYOR NUMBER OF THE SURVEYOR SETTING THE MONUMENT. MONUMENTS SET AS PART OF AN APPROVED PLAT ARE EXEMPT.
  - THE SURVEYOR IS TO SUPPLY THE CITY OF TACOMA WITH A COPY OF THE CALCULATIONS USED TO DETERMINE ALL MONUMENT POSITIONS BEFORE THE MONUMENTS ARE SET.
  - BRASS MARKER FOR CITY OF TACOMA FUNDED PROJECTS WILL BE SUPPLIED BY THE CITY. ALL OTHER BRASS MARKERS TO BE SUPPLIED BY THE CONTRACTOR.
  - MONUMENT MUST BE MAGNETICALLY LOCATABLE.

CITY OF TACOMA  
DEPARTMENT OF PUBLIC WORKS

APPROVED FOR PUBLICATION  
CITY ENGINEER  
DATE 2/4/03

POURED MONUMENT  
STANDARD PLAN NO. SU-01

CITY OF TACOMA STD PLAN NO. SU-01  
POURED MONUMENT  
NTS