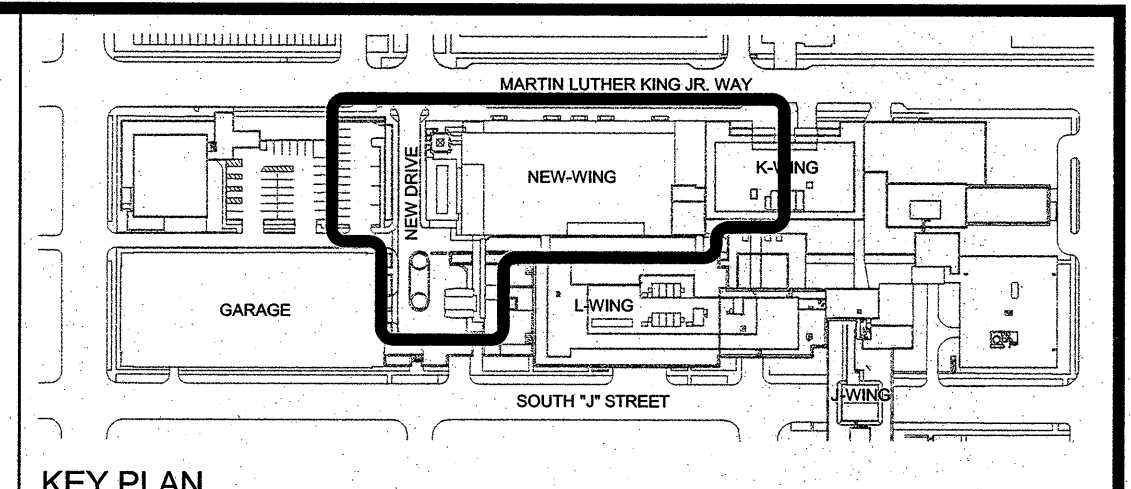
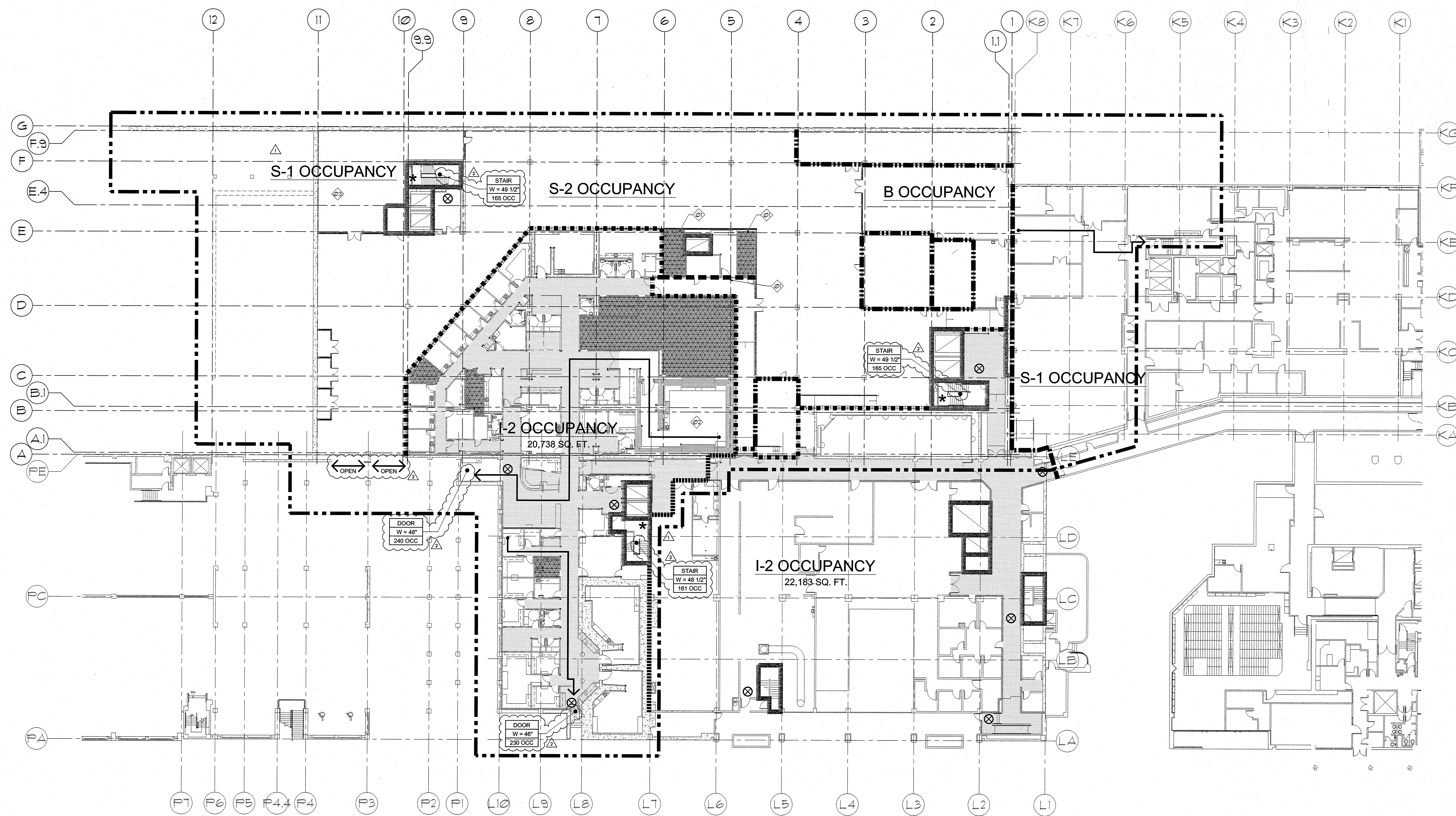


A  
B  
C  
D  
E



**GENERAL NOTES**

A. TOTAL OCCUPANTS OF NEW AND REMODELED AREAS = 444 (SEE SHEET FLS 01A)

B. TOTAL EXIT CAPACITY AVAILABLE TO OCCUPANTS = 961

**KEY NOTES**

Ⓢ THESE RATED SPACES ARE RATED FOR FUTURE I-2 OCCUPANCY.

Ⓢ 1014.2.4.3 EXCEPTION FOR INTERVENING ROOMS APPLIES.

Ⓢ NOT SEPARATED USE - NO FIRE BARRIER

- LEGEND**
- H → HORIZONTAL EXIT
  - EXIT ACCESS
  - ⊗ EXIT DOOR
  - \* STAND PIPE (PROVIDE IN EACH REQUIRED STAIR)
  - AREA OF WORK
  - 2-HOUR FIRE BARRIER AT SHAFTEXIT (106) STAIRS. DUCT PENETRATION: 90 MIN F/S DAMPER, DOOR: 90 MIN F/S AT SHAFTEXIT, 90 MIN F AT STAIR
  - 2-HOUR FIRE BARRIER AT HORIZONTAL EXIT (106). DUCT PENETRATION: 90 MIN F DAMPER, DOOR: 90 MIN F RATED
  - 2-HOUR FIRE BARRIER OCCUPANCY/SMOKE COMPARTMENT (106). DUCT: 90 MIN F/S DAMPER, DOOR: 90 MIN F/S RATED
  - 1-HOUR FIRE BARRIER OCCUPANCY SEPARATION. DUCT: 90 MIN F DAMPER, DOOR: 45 MIN F RATED
  - 1-HOUR FIRE BARRIER INCIDENTAL USE SEPARATION (TABLE 508.2). DUCT: 90 MIN F/S DAMPER, DOOR: 45 MIN F/S RATED
  - 1-HOUR SMOKE BARRIER / SMOKE COMPARTMENT (109). DUCT: 90 MIN F/S DAMPER, DOOR: 20 MIN F/S RATED
  - SMOKE PARTITION AT SUITE BOUNDARY (110). DUCT: SEALED AROUND NO DAMPER (110.1). DOOR: NON-RATED (401.3.1)
  - SMOKE PARTITION AT CORRIDOR (110). DUCT: SEALED AROUND NO DAMPER (110.1). DOOR: NON-RATED (401.3.1)
  - INCIDENTAL USE - 1-HOUR (TABLE 508.2) (NFPA 103.2.1)
  - INCIDENTAL USE - SMOKE (TABLE 508.2)

**GIFFIN • BOLTE • JURGENS**  
ARCHITECTS  
815 S.W. SECOND AVENUE • PORTLAND, OREGON 97204  
(503) 223-0992 www.gbjarch.com FAX (503) 294-3961



**MultiCare**  
**EMERGENCY DEPARTMENT & CANCER CENTER EXPANSION**  
TACOMA, WASHINGTON

△ CCD 04	12-17-2008	Date	09-26-2008
△ CCD 07	02-20-2009	Scale	1" = 20'-0"
		Drawn By	JLC
		Job No.	4034

**1st Floor**  
**Fire & Life Safety**  
**FLS**  
**01**