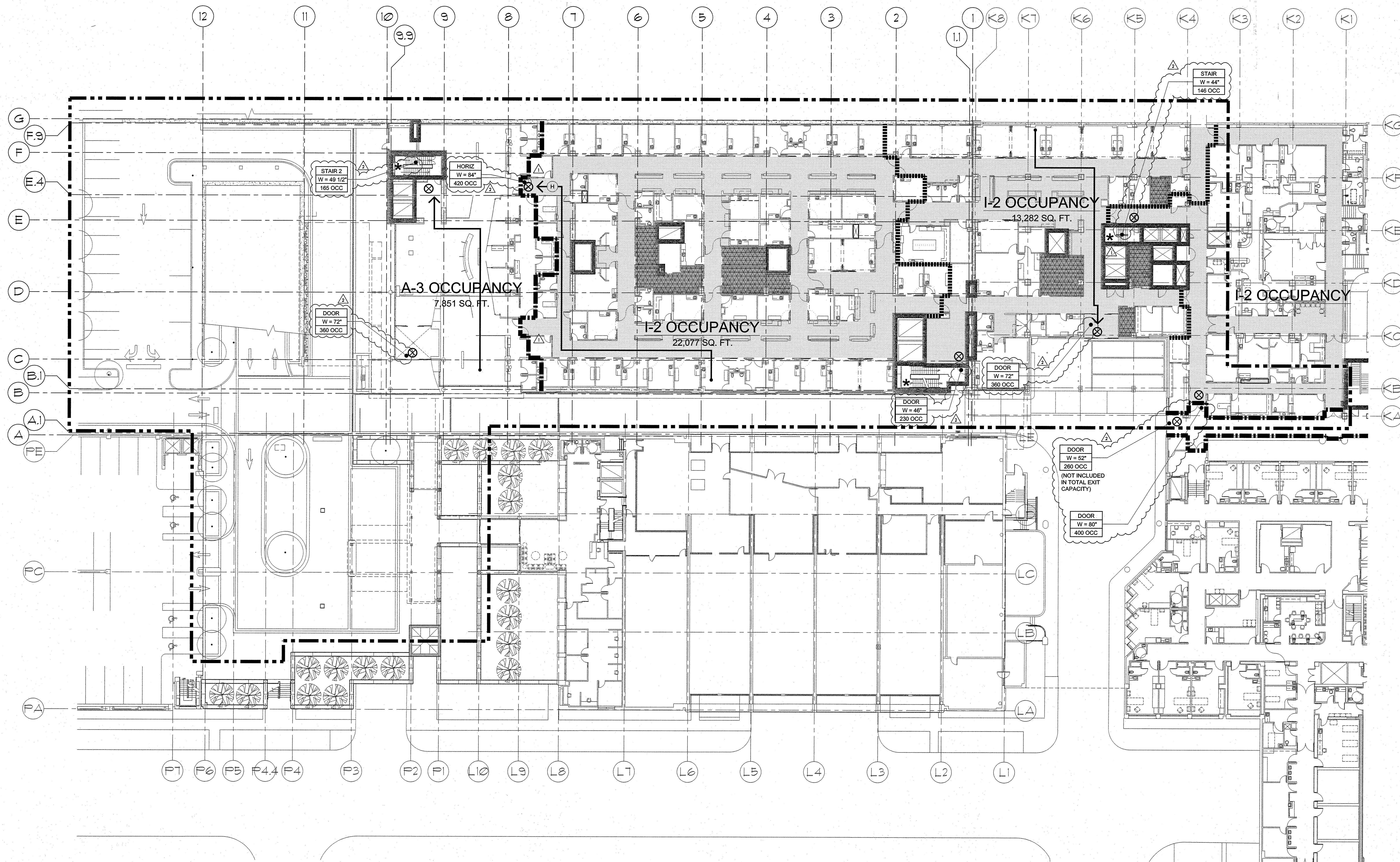


A  
B  
C  
D  
E



KEY PLAN

GENERAL NOTES

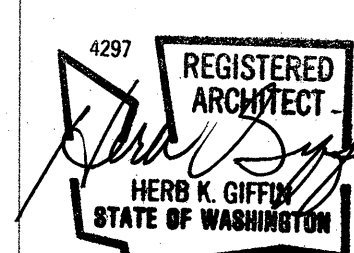
- A. TOTAL OCCUPANTS OF NEW AND REMODELED AREAS = 786  
(SEE SHEET FLS 02A)  
B. TOTAL EXIT CAPACITY AVAILABLE TO OCCUPANTS = 2,081

LEGEND

- H → HORIZONTAL EXIT  
→ EXIT ACCESS  
⊗ EXIT DOOR  
\* STAND PIPE (PROVIDE IN EACH REQUIRED STAIR)  
--- AREA OF WORK  
--- 2-HOUR FIRE BARRIER AT SHAFT/EXIT (106). DUCT PENETRATION: 90 MIN F/S DAMPER, DOOR: 90 MIN F AT SHAFT, 90 MIN F AT STAIR  
--- 2-HOUR FIRE BARRIER AT HORIZONTAL EXIT (106). DUCT PENETRATION: 90 MIN F DAMPER, DOOR: 90 MIN F RATED  
--- 2-HOUR FIRE BARRIER OCCUPANCY/SMOKE COMPARTMENT (106). DUCT: 90 MIN F/S DAMPER, DOOR: 90 MIN F/S RATED  
--- 1-HOUR FIRE BARRIER OCCUPANCY SEPARATION. DUCT: 90 MIN F DAMPER, DOOR: 45 MIN F RATED  
--- 1-HOUR FIRE BARRIER, INCIDENTAL USE SEPARATION (TABLE 508.2). DUCT: 90 MIN F/S DAMPER, DOOR: 45 MIN F/S RATED  
--- 1-HOUR SMOKE BARRIER / SMOKE COMPARTMENT (105). DUCT: 90 MIN F/S DAMPER, DOOR 20 MIN F/S RATED  
--- SMOKE PARTITION AT SUITE BOUNDARY (110). DUCT: SEALED AROUND NO DAMPER (110.1), DOOR: NON-RATED (401.3.1)  
--- SMOKE PARTITION AT CORRIDOR (110). DUCT: SEALED AROUND NO DAMPER (110.1), DOOR: NON-RATED (401.3.1)  
--- INCIDENTAL USE - 1-HOUR (TABLE 508.2) (NFPA 103.2.1)  
--- INCIDENTAL USE - SMOKE (TABLE 508.2)

GIFFIN • BOLTE • JURGENS  
ARCHITECTS

815 S.W. SECOND AVENUE • PORTLAND, OREGON 97204  
(503) 223-0992 www.gbjaarch.com FAX (503) 294-3961



MultiCare

EMERGENCY DEPARTMENT & CANCER CENTER EXPANSION

TACOMA, WASHINGTON

△ CCD 04  
△ CCD 07

12-17-2008  
02-20-2009

Date 09-26-2008  
Scale 1" = 20'-0"  
Drawn By JLC  
Job No. 4034

2nd Floor  
Fire & Life Safety

FLS  
02