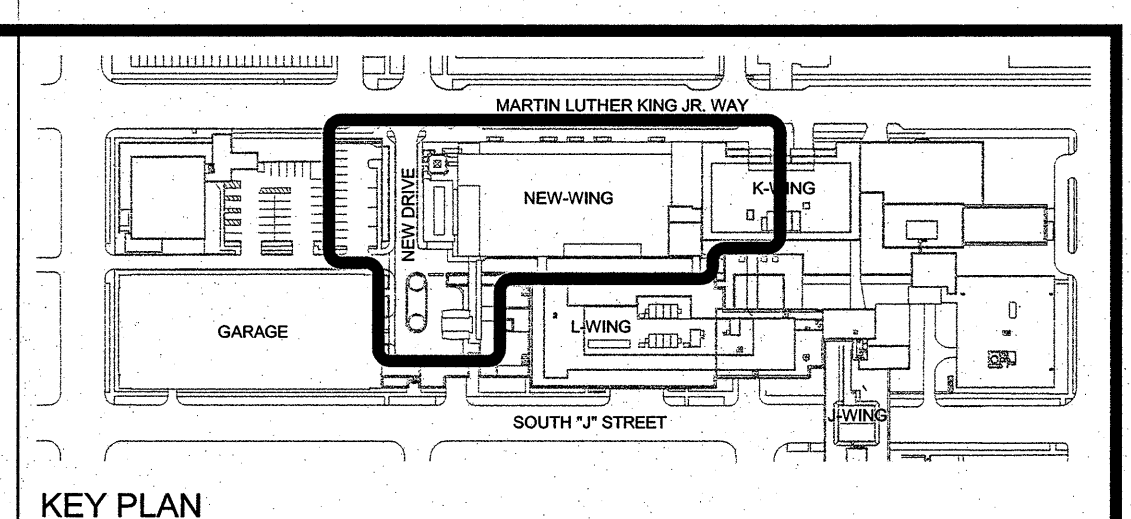
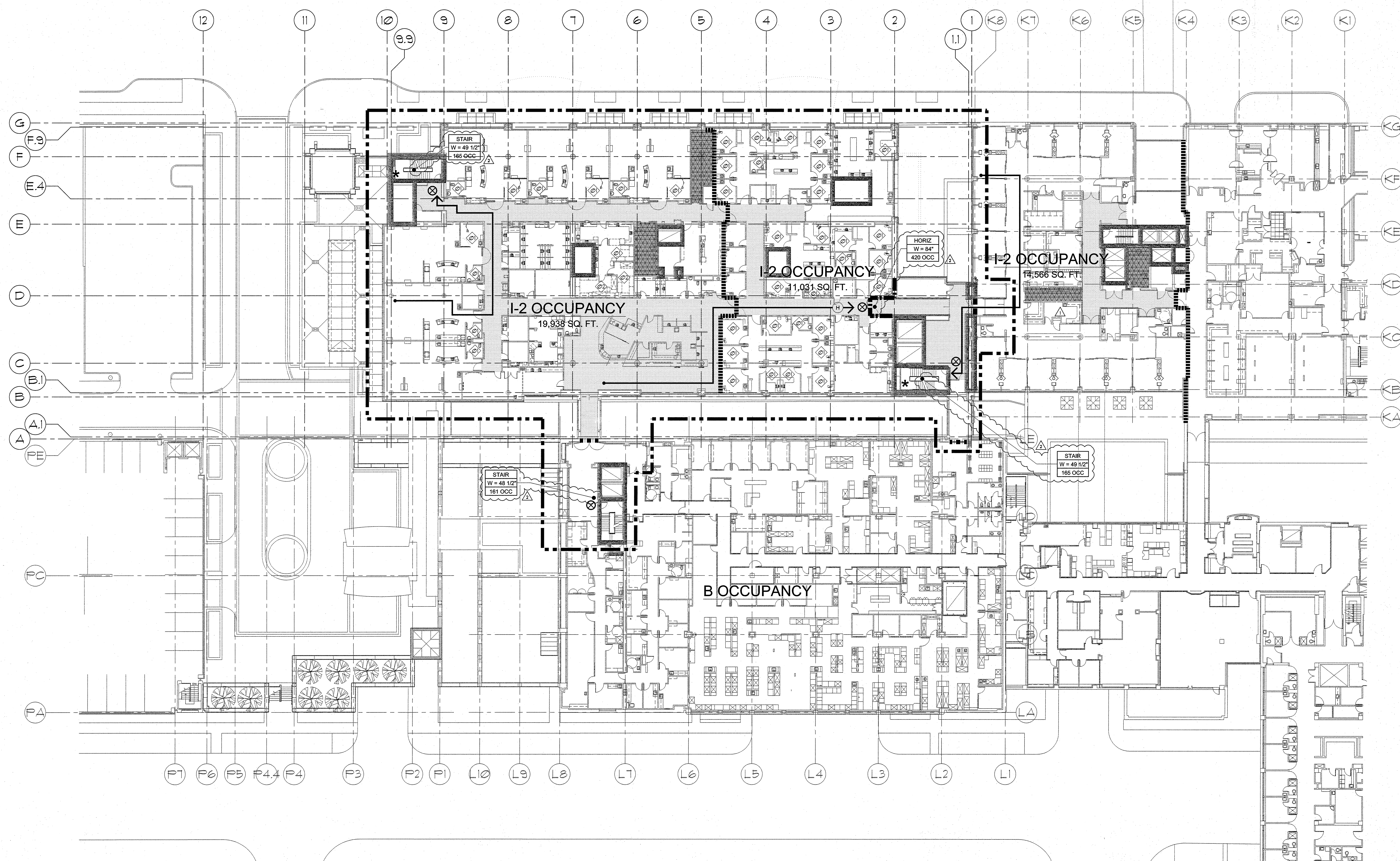


A
B
C
D
E



GENERAL NOTES

A. TOTAL OCCUPANTS OF NEW AND REMODELED AREAS = 405 (SEE SHEET FLS 043)

B. TOTAL EXIT CAPACITY AVAILABLE TO OCCUPANTS = 911

KEY NOTES

10142.4.3 EXCEPTION FOR INTERVENING ROOMS APPLIES.

10142.4.4 EXCEPTION FOR INTERVENING ROOMS APPLIES.

- LEGEND**
- HORIZONTAL EXIT
 - EXIT ACCESS
 - EXIT DOOR
 - STAND PIPE (PROVIDE IN EACH REQUIRED STAIR)
 - AREA OF WORK
 - 2-HOUR FIRE BARRIER AT SHAFT/EXIT (106). STAIRS, DUCT PENETRATION: 90 MIN F/S DAMPER, DOOR: 90 MIN F/S AT SHAFT, 90 MIN F AT STAIR
 - 2-HOUR FIRE BARRIER AT HORIZONTAL EXIT (106). DUCT PENETRATION: 90 MIN F DAMPER, DOOR: 90 MIN F RATED
 - 2-HOUR FIRE BARRIER OCCUPANCY/SMOKE COMPARTMENT (106). DUCT: 90 MIN F/S DAMPER, DOOR: 90 MIN F/S RATED
 - 1-HOUR FIRE BARRIER OCCUPANCY SEPARATION. DUCT: 90 MIN F DAMPER, DOOR: 45 MIN F RATED
 - 1-HOUR FIRE BARRIER INCIDENTAL USE SEPARATION (TABLE 508.2). DUCT: 90 MIN F/S DAMPER, DOOR: 45 MIN F/S RATED
 - 1-HOUR SMOKE BARRIER / SMOKE COMPARTMENT (109). DUCT: 90 MIN F/S DAMPER, DOOR 20 MIN F/S RATED
 - SMOKE PARTITION AT SUITE BOUNDARY (110). DUCT: SEALED AROUND NO DAMPER (110.1), DOOR: NON-RATED (401.3.1)
 - SMOKE PARTITION AT CORRIDOR (110). DUCT: SEALED AROUND NO DAMPER (110.1), DOOR: NON-RATED (401.3.1)
 - INCIDENTAL USE - 1-HOUR (TABLE 508.2) (NFPA 18.3.2.1)
 - INCIDENTAL USE - SMOKE (TABLE 508.2)

GIFFIN • BOLTE • JURGENS
ARCHITECTS
815 S.W. SECOND AVENUE - PORTLAND, OREGON 97204
(503) 223-0992 www.gbjarch.com FAX (503) 294-3961

REGISTERED ARCHITECT
HERB K. GIFFIN
STATE OF WASHINGTON

MultiCare
EMERGENCY DEPARTMENT & CANCER CENTER EXPANSION
TACOMA, WASHINGTON

CCD 04 12-17-2008
CCD 07 02-20-2009

Date 09-26-2008
Scale 1" = 20'-0"
Drawn By JLC
Job No. 4034

4th Floor
Fire & Life Safety

FLS
04