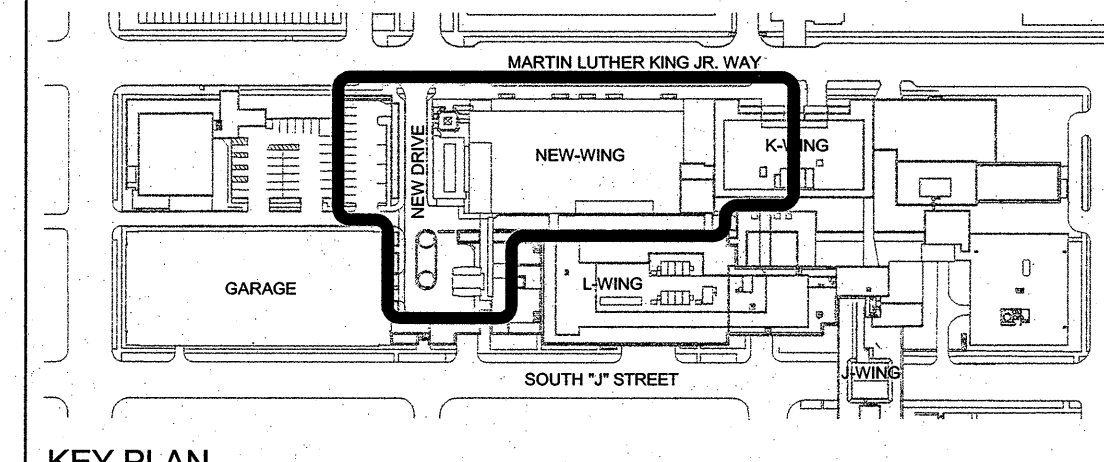
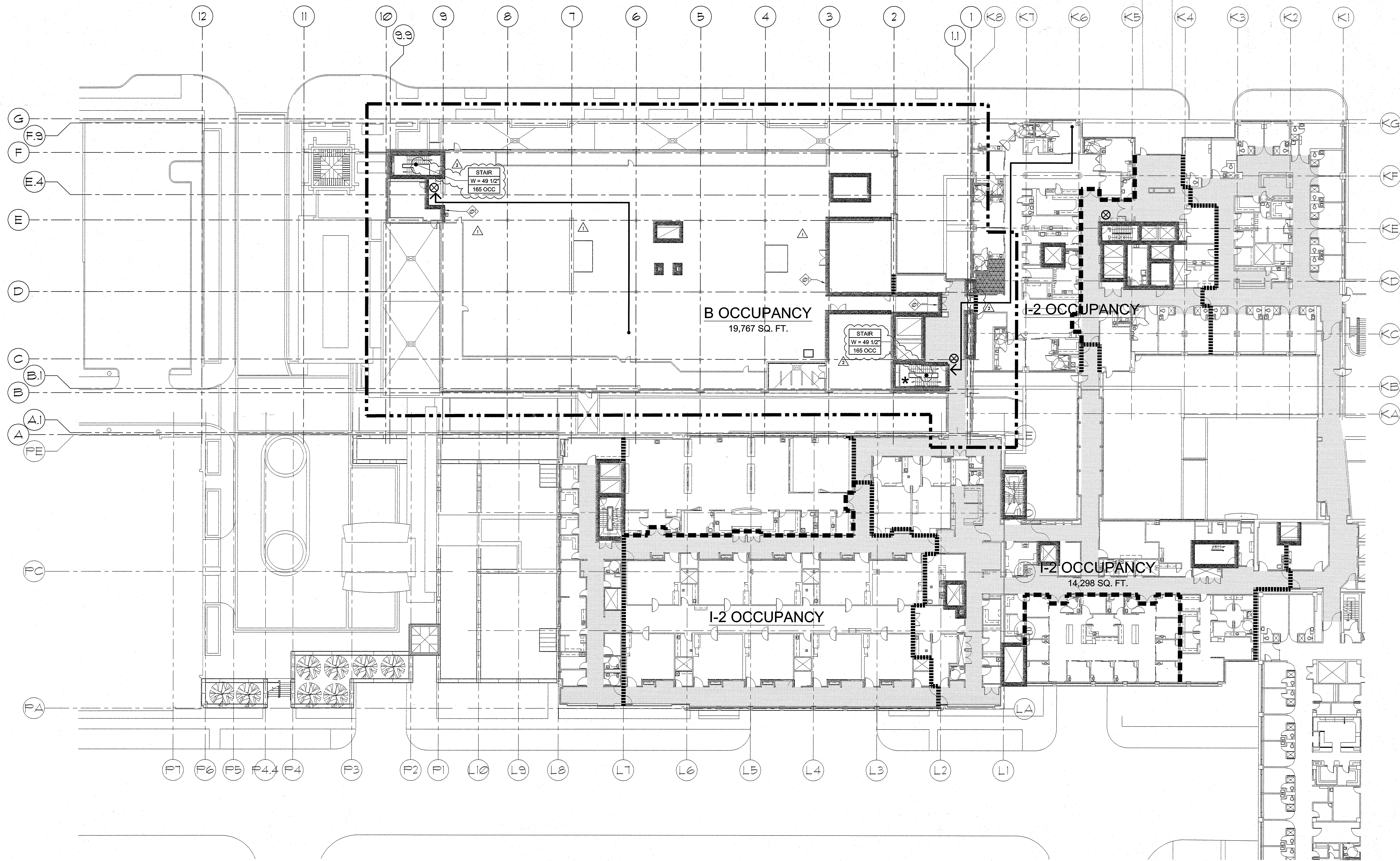


A  
B  
C  
D  
E



**GENERAL NOTES**

A. TOTAL OCCUPANTS OF NEW AND REMODELED AREAS = 32 (SEE SHEET FLS 05.9)

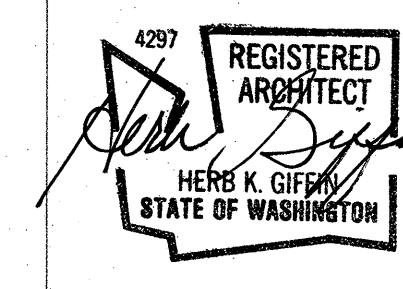
B. TOTAL EXIT CAPACITY AVAILABLE TO OCCUPANTS = 330

**KEY NOTES**

THIS ACTS AS TOP OF SHAFTS

- LEGEND**
- HORIZONTAL EXIT
  - EXIT ACCESS
  - EXIT DOOR
  - STAND PIPE (PROVIDE IN EACH REQUIRED STAIR)
  - AREA OF WORK
  - 2-HOUR FIRE BARRIER AT SHAFT/EXIT (106). DUCT PENETRATION: 90 MIN F/S DAMPER DOOR: 90 MIN F/S AT SHAFT, 90 MIN F AT STAIR
  - 2-HOUR FIRE BARRIER AT HORIZONTAL EXIT (106). DUCT PENETRATION: 90 MIN F DAMPER DOOR: 90 MIN F RATED
  - 2-HOUR FIRE BARRIER OCCUPANCY/SMOKE COMPARTMENT (106). DUCT: 90 MIN F/S DAMPER DOOR: 90 MIN F/S RATED
  - 1-HOUR FIRE BARRIER OCCUPANCY SEPARATION. DUCT: 90 MIN F DAMPER DOOR: 45 MIN F RATED
  - 1-HOUR FIRE BARRIER INCIDENTAL USE SEPARATION (TABLE 508.2). DUCT: 90 MIN F/S DAMPER DOOR: 45 MIN F/S RATED
  - 1-HOUR SMOKE BARRIER / SMOKE COMPARTMENT (106). DUCT: 90 MIN F/S DAMPER DOOR 20 MIN F/S RATED
  - SMOKE PARTITION AT SUITE BOUNDARY (10). DUCT: SEALED AROUND NO DAMPER (10.1). DOOR: NON-RATED (401.3.1)
  - SMOKE PARTITION AT CORRIDOR (10). DUCT: SEALED AROUND NO DAMPER (10.1). DOOR: NON-RATED (401.3.1)
  - INCIDENTAL USE - 1-HOUR (TABLE 508.2) (NFPA 18.3.2.1)
  - INCIDENTAL USE - SMOKE (TABLE 508.2)

GIFFIN • BOLTE • JURGENS  
ARCHITECTS  
815 S.W. SECOND AVENUE • PORTLAND, OREGON 97204  
(503) 223-0992 www.gbjarch.com FAX (503) 294-3961



MultiCare  
EMERGENCY DEPARTMENT & CANCER CENTER EXPANSION  
TACOMA, WASHINGTON

CCD 04 12-17-2008  
CCD 07 02-20-2009

Date 09-26-2008  
Scale 1" = 20'-0"  
Drawn By JLC  
Job No. 4034

5th Floor  
Fire & Life Safety

FLS  
05