

A

B

C

D

E

A

B

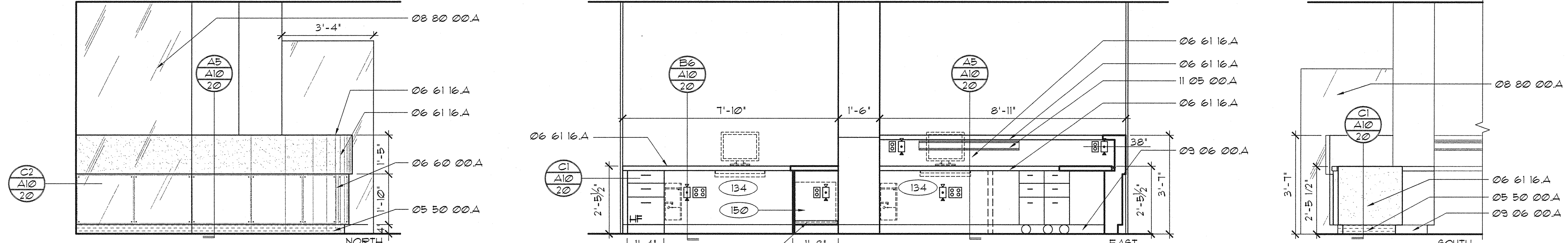
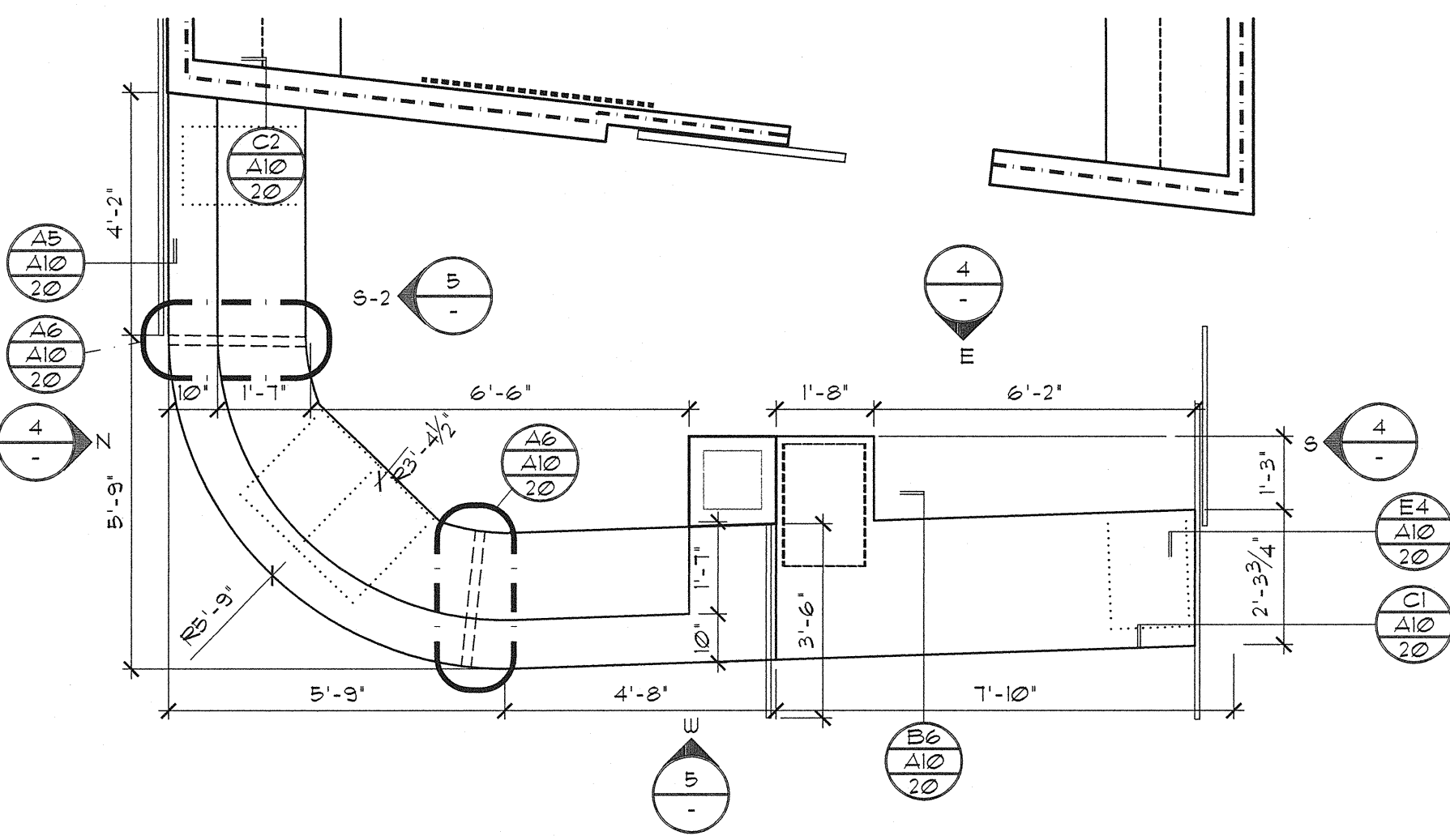
C

D

E

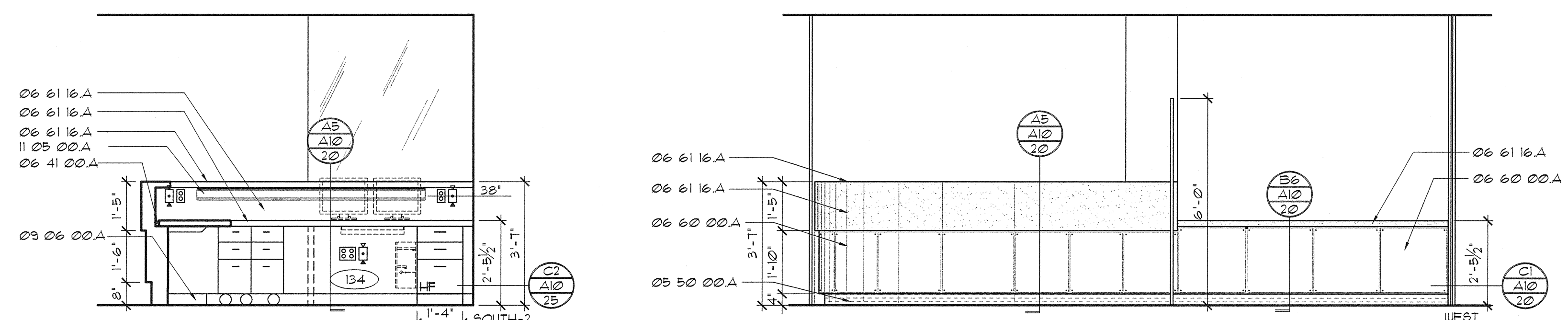
1 PLAN - WAIT 1113

2 ELEVATIONS - WAIT 1113

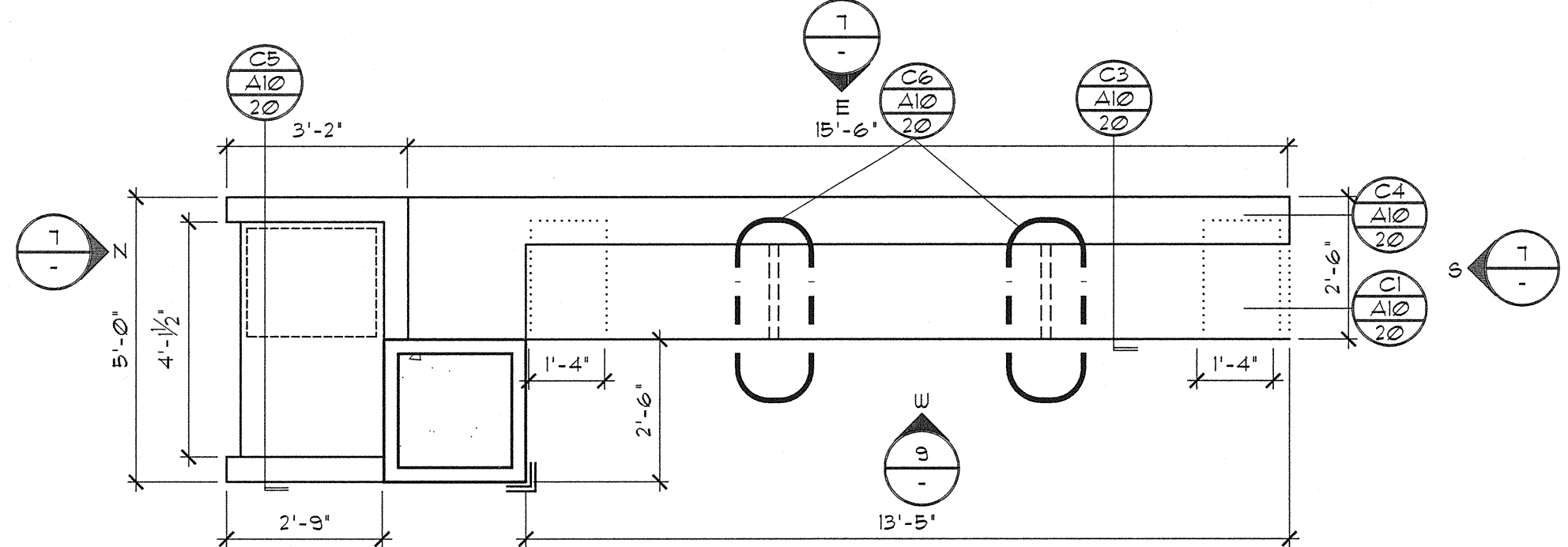


4 ELEVATIONS - RECEPTION 1114

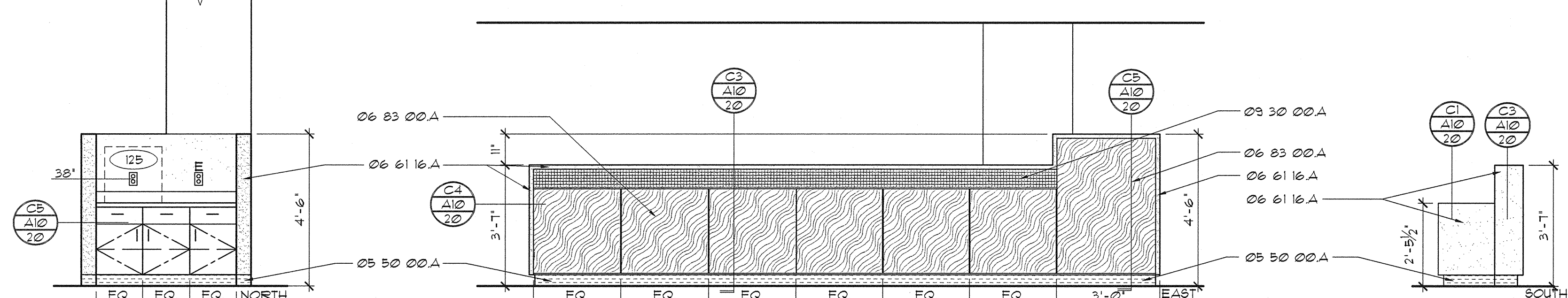
3 PLAN - RECEPTION 1114



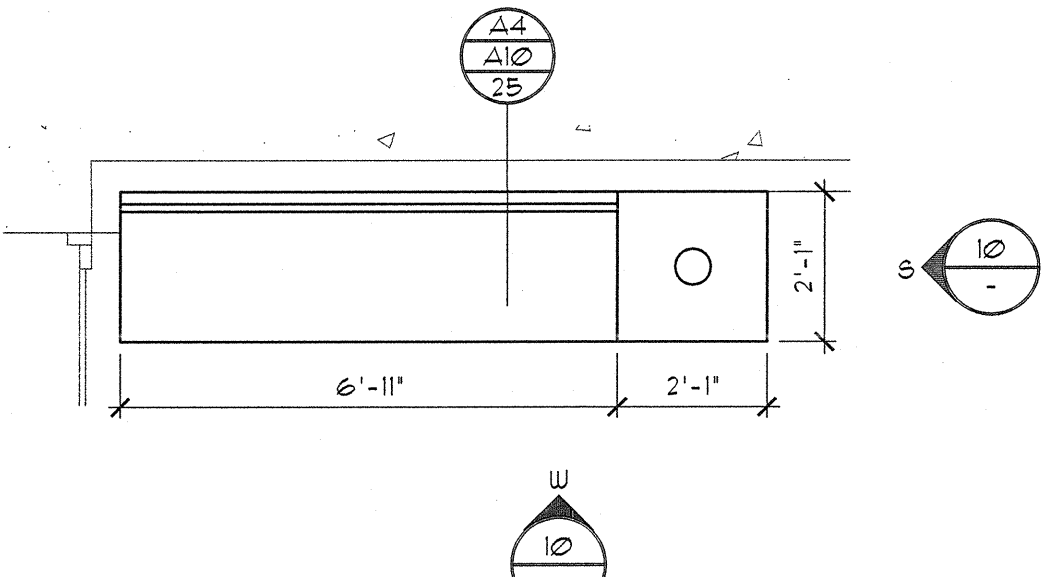
5 ELEVATIONS - RECEPTION 1114



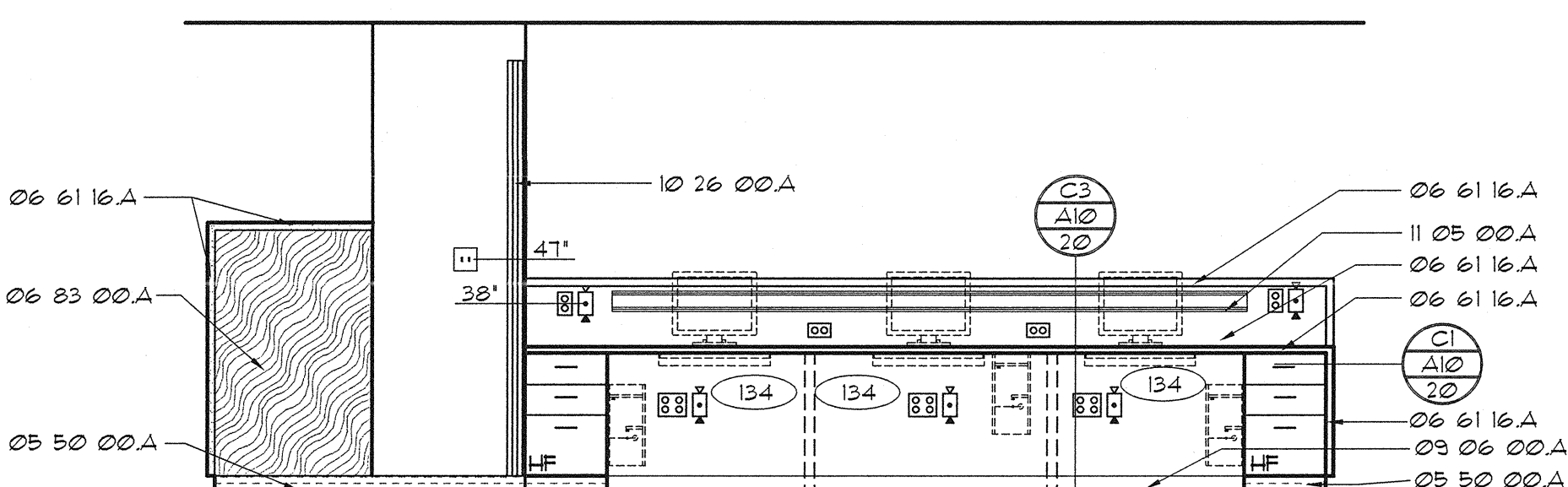
6 PLAN - NURSE STATION 1035



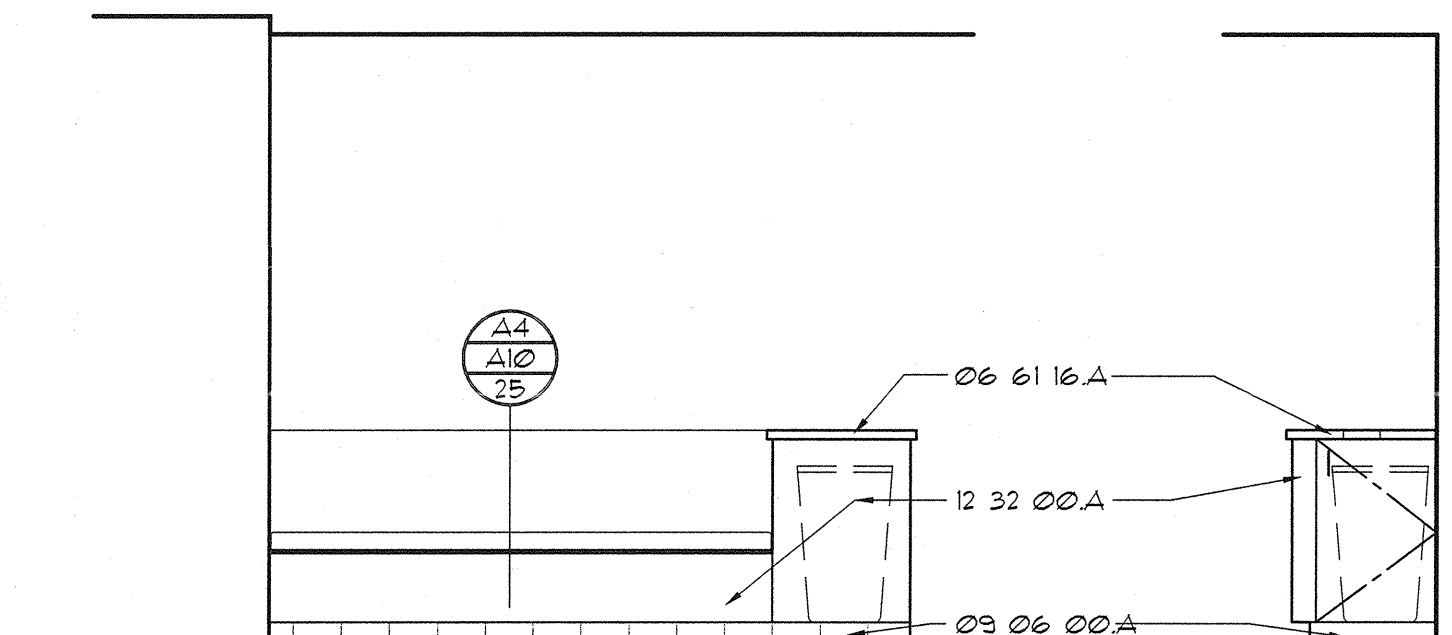
7 ELEVATIONS - NURSE STATION 1035



8 PLAN - VESTIBULE 1112



9 ELEVATIONS - NURSE STATION 1035



10 ELEVATIONS - VESTIBULE 1112

MATERIAL LEGEND

- Division 05 Metals
- 05 50 00.A STAINLESS STEEL BASE
- Division 06 Wood & Plastics
- 06 41 00.A HAFEL CONT. CORD GRCHMET # 82914310
- 06 60 00.A RESIN PANELS AS SCHEDULED IN SECTION 03 06 00
- 06 61 16.A SOLID SURFACE AS SCHEDULED IN SECTION 03 06 00
- 06 83 00.A FIBER REINFORCED LAMINATE AS SCHEDULED IN SECTION 03 06 00
- Division 08 Doors & Windows
- 08 20 00.A G-15 GLAZING
- Division 09 Finishes
- 09 06 00.A BASE AS SCHEDULED IN SECTION 03 06 00
- 09 30 00.A TILE AS SCHEDULED IN SECTION 03 06 00

Division 10 Specialties

- 10 26 00.A ACROVYN CORNER GUARD # 1'-2" AFF UNLESS OTHERWISE NOTED.

Division 11 Equipment

- 11 05 00.A GCX MONITOR MOUNTING CHANNEL

Division 12 Furnishings

- 12 32 00.A PLASTIC LAMINATE CASEWORK
- B HEAVY DUTY PULL OUT SHELF FOR PRINTER

GENERAL NOTES

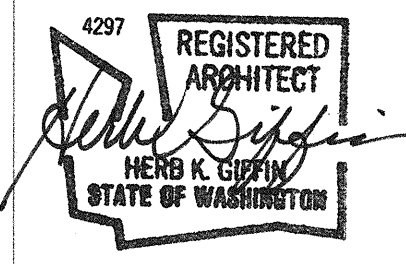
- A. MATERIAL LEGEND CON DOC REFERENCES APPLY TO THIS DIAG. ONLY.

LEGEND

- Ⓜ DUPLEX RECEPTACLE W/ EMERGENCY POWER
- Ⓜ DUPLEX RECEPTACLE
- Ⓜ FOURPLEX RECEPTACLE
- Ⓜ TELEPHONE/DATA JACK COMBINED (STANDARD 4 JACKS PER PLATE)

GIFFIN • BOLTE • JURGENS
ARCHITECTS

815 S.W. SECOND AVENUE - PORTLAND, OREGON 97204
(503) 223-0992 • www.gbarch.com FAX (503) 294-3961



MultiCare
EMERGENCY DEPARTMENT & CANCER CENTER EXPANSION

TACOMA, WASHINGTON

Date 09-26-2008
Scale 3/8"=1'-0"
Drawn By PLZ
Job No. 4034

CASEWORK
DETAILS

A10
10