

A

B

C

D

E

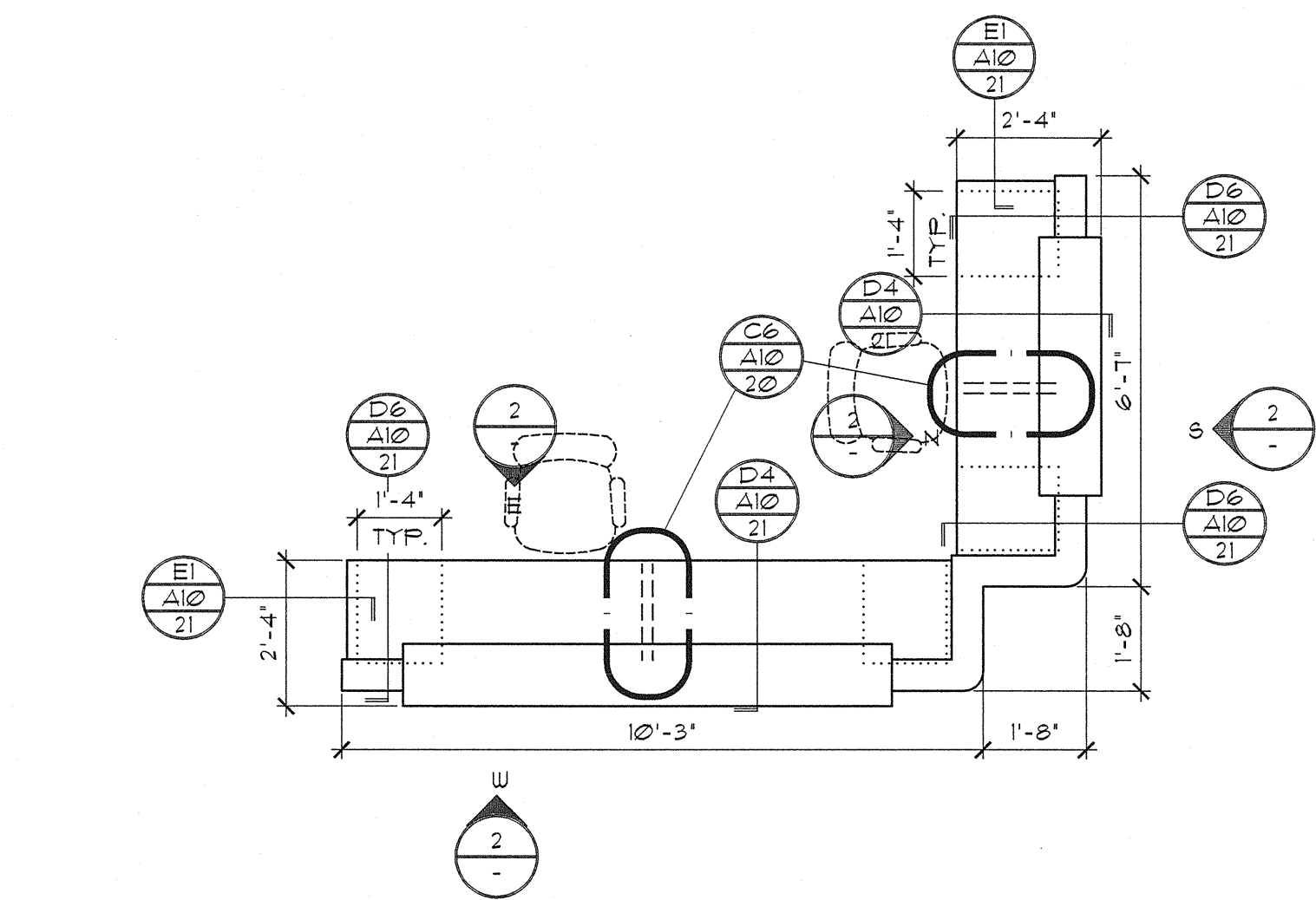
A

B

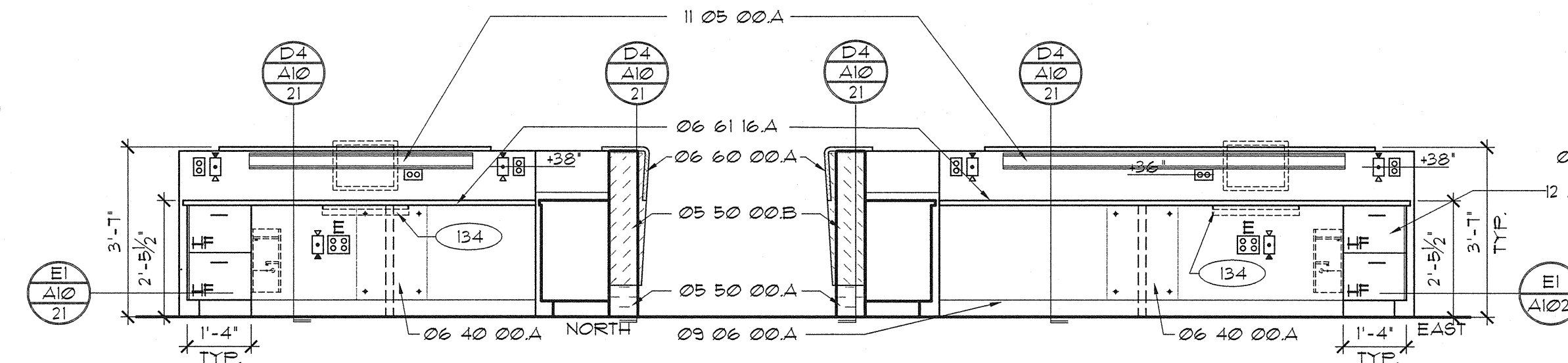
C

D

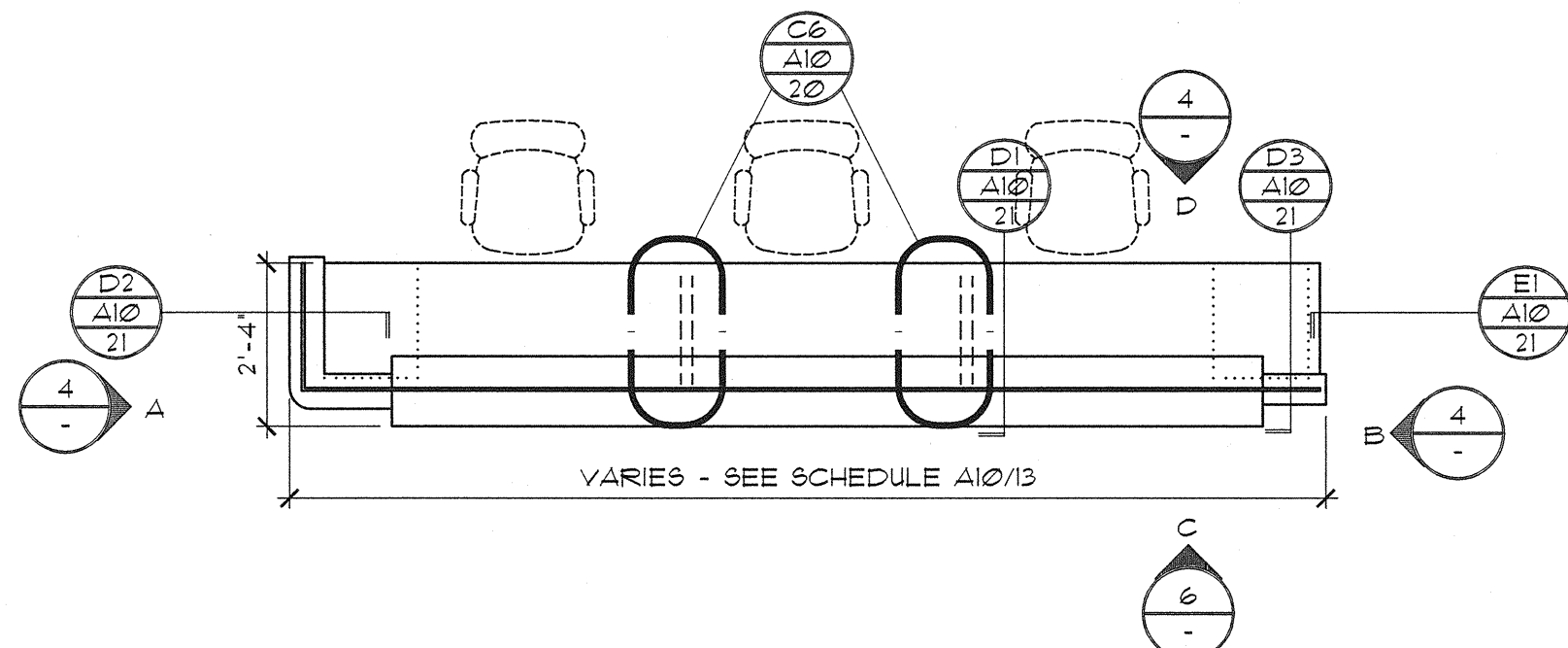
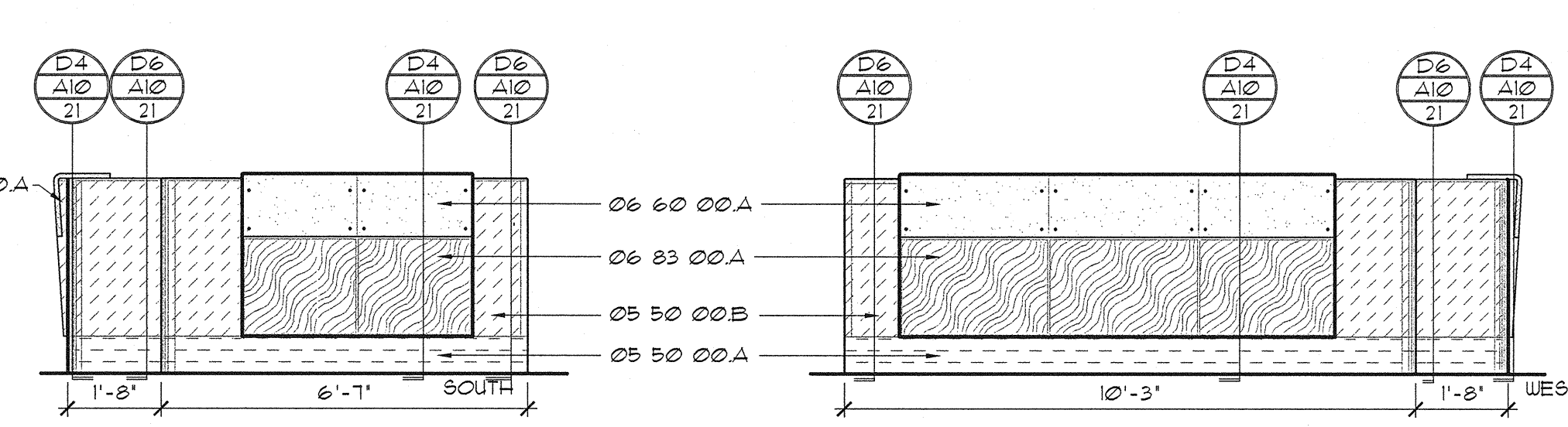
E



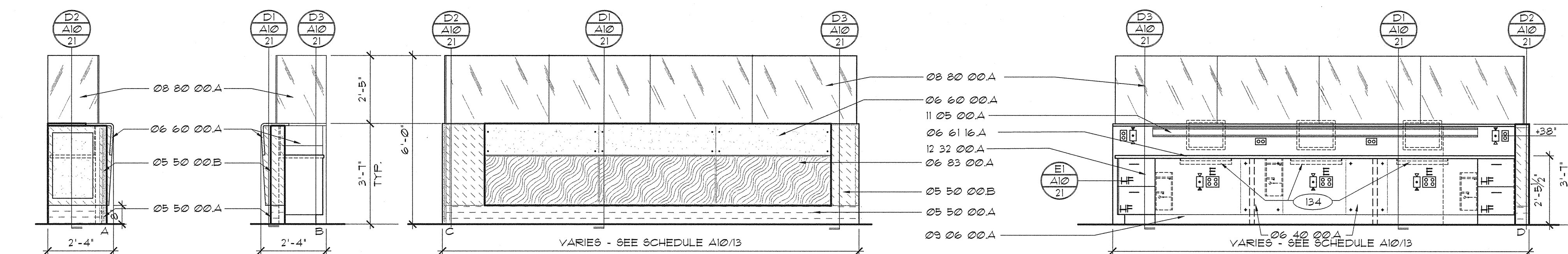
1 PLAN - NURSE STATION 2111



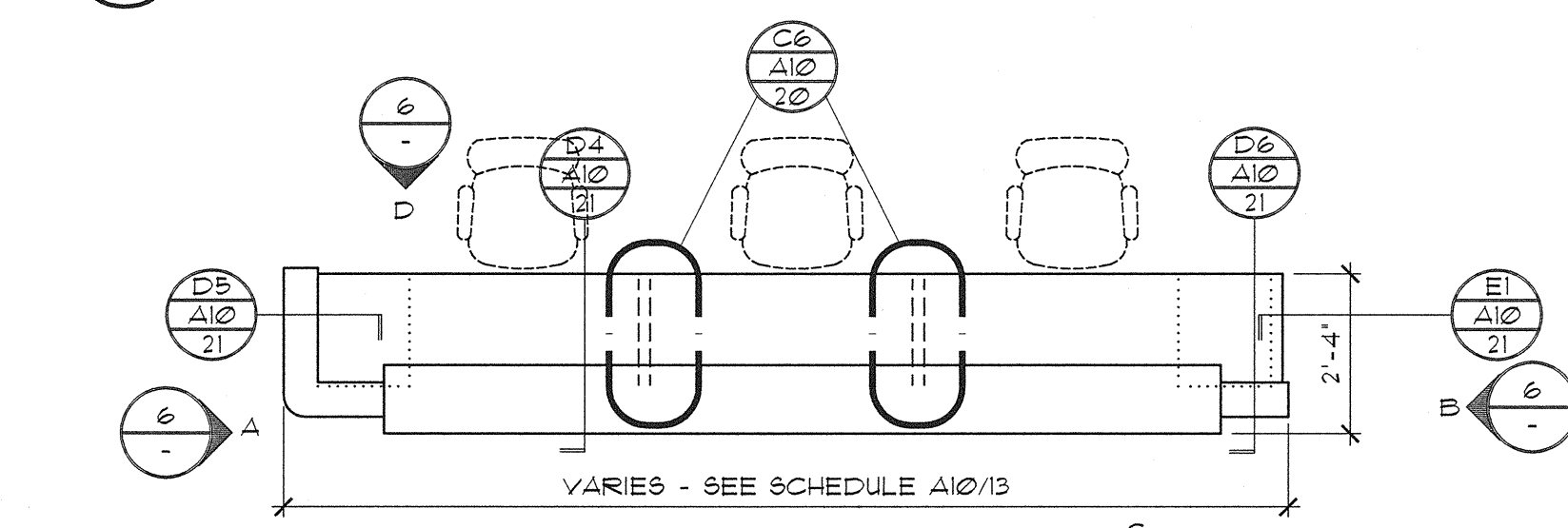
2 ELEVATIONS - NURSE STATION 2111



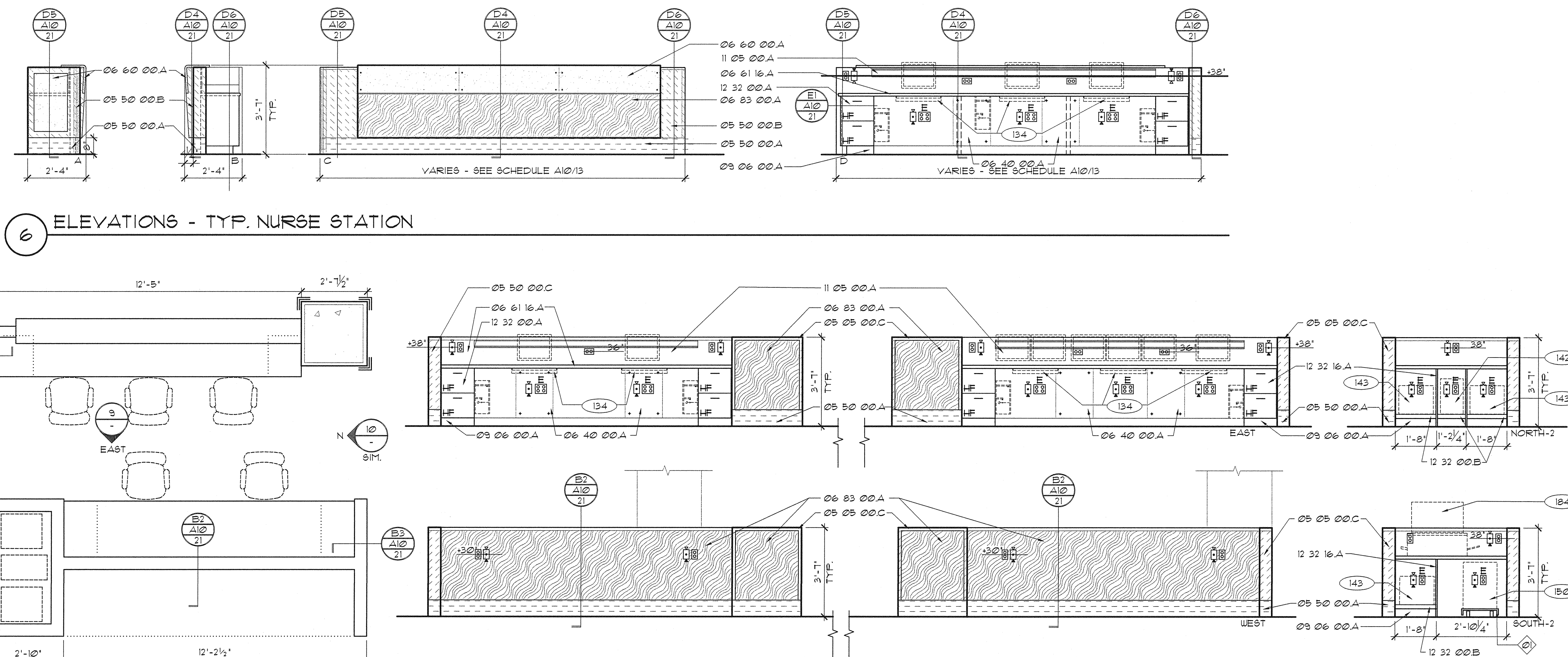
3 PLAN - TYP. PHYS. WORK STATION



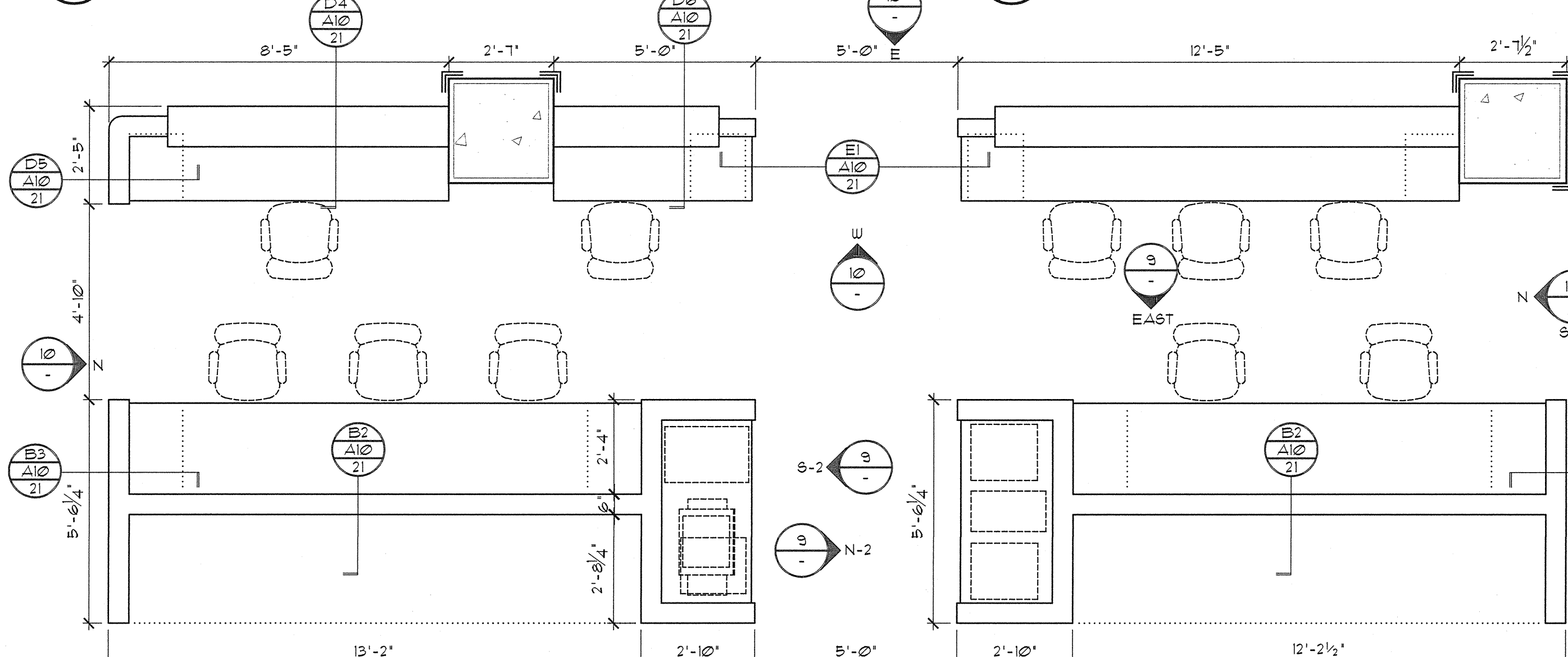
4 ELEVATIONS - TYP. PHYS. WORK STATION



5 PLAN - TYP. NURSE STATION

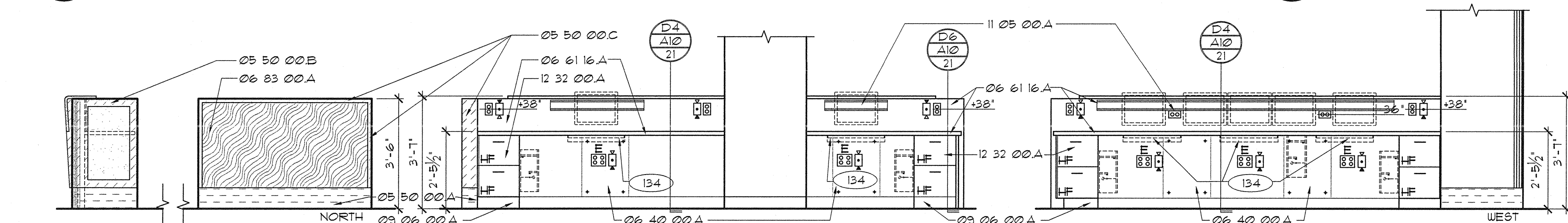


6 ELEVATIONS - TYP. NURSE STATION

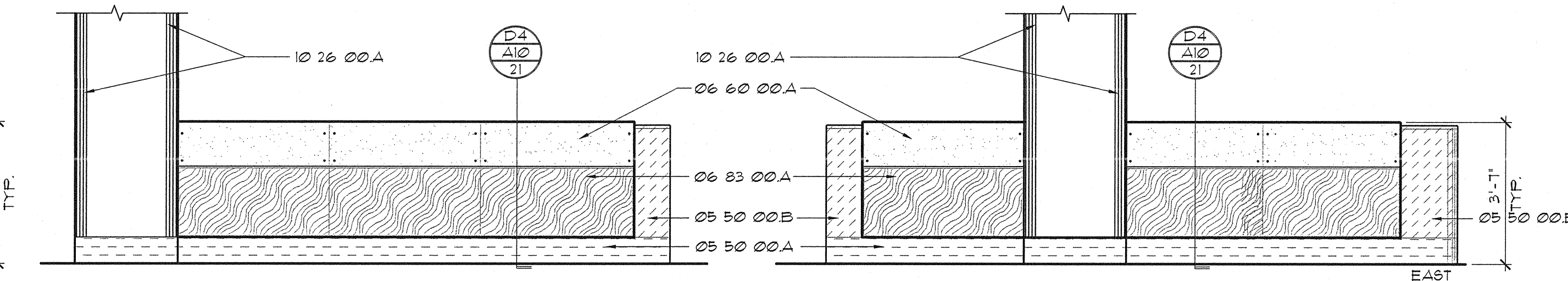


7 PLAN - NURSE STATION 2255/2257

9 ELEVATIONS - NURSE STATION 2255/2257



10 PLAN - NURSE STATION 2255/2257



MATERIAL LEGEND

Division 05 Metals

- 05 50 00.A STAINLESS STEEL BASE
 05 60 00.A STAINLESS STEEL CLADDING
 05 61 16.A STAINLESS STEEL WALL CAP

Division 06 Wood & Plastics

- 06 40 00.A ACCESS PANEL
 06 60 00.A RESIN PANEL AS SCHEDULED IN SECTION 03 06 00
 06 61 16.A SOLID SURFACE AS SCHEDULED IN SECTION 03 06 00
 06 83 00.A FIBER REINFORCED LAMINATE AS SCHEDULED IN SECTION 03 06 00

Division 08 Doors & Windows

- 08 80 00.A 5-13 GLAZING
 Division 09 Finishes
 09 06 00.A SCHEDULED BASE

Division 10 Specialties

- 10 26 00.A CORNER GUARD (1'-2" AFF UNLESS OTHERWISE NOTED)
 Division 11 Equipment

Division 12 Furnishings

- 12 32 00.A PLASTIC LAMINATE CLAD CASEWORK
 12 33 00.A HEAVY DUTY FULL OUT SHELF FOR PRINTER

A. MATERIAL LEGEND CON DOC REFERENCES APPLY TO THIS DWG. ONLY.

LEGEND

- DUPLEX RECEPTACLE W/
 EMERGENCY POWER
 □ DUPLEX RECEPTACLE
 □ TELEPHONE/DATA JACK
 COMBINED (STANDARD 4
 JACKS PER PLATE)
 □ QUADPLEX RECEPTACLE W/
 EMERGENCY POWER

2nd FLOOR PHYSICIANS WORK STATIONS

ROOM NO.	RETURN	SEATS	DIMENSIONS	NOTES
2072	LEFT	3	13'-4" x 2'-4"	
2086	RIGHT	3	13'-5" x 2'-4"	
2127	RIGHT	3	13'-4" x 2'-4"	
2113	RIGHT	3	14'-10" x 2'-4"	
2253	LEFT & RIGHT	3	12'-9" x 2'-4"	

2nd FLOOR NURSE STATIONS

ROOM NO.	RETURN	SEATS	DIMENSIONS	NOTES
2111 (A)	LEFT	2	10'-6" x 2'-4"	
2111 (B)	NONE	1	6'-6" x 2'-4"	SEE 1/A1013 THIS SHEET
2111 (C)	NONE	1	10'-2" x 2'-4"	SEE 1/A1013 THIS SHEET
2116 (A)	LEFT	3	14'-0" x 2'-4"	
2116 (B)	RIGHT	3	14'-0" x 2'-4"	
2125	LEFT	3	14'-0" x 2'-4"	
2255 (A)	LEFT	1	-	SEE 7/A1013 THIS SHEET
2255 (B)	NONE	0	-	SEE 7/A1013 THIS SHEET
2255 (C)	RIGHT	3	-	SEE 7/A1013 THIS SHEET
2257 (A)	NONE	2	-	SEE 7/A1013 THIS SHEET
2257 (B)	LEFT	3	-	SEE 7/A1013 THIS SHEET
2074	RIGHT	3	14'-0" x 2'-4"	
2078 (A)	LEFT	3	13'-10" x 2'-4"	
2078 (B)	RIGHT	3	13'-10" x 2'-4"	
2081	LEFT	3	13'-5" x 2'-4"	

3rd FLOOR PHYSICIANS WORK STATIONS

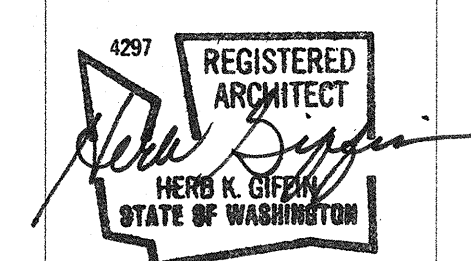
ROOM NO.	RETURN	SEATS	DIMENSIONS	NOTES
3069	LEFT	3	16'-0" x 2'-4"	
3138	RIGHT	3	14'-9" x 2'-4"	

3rd FLOOR NURSE STATIONS

ROOM NO.	RETURN	SEATS	DIMENSIONS	NOTES
3072	RIGHT	4	18'-0" x 2'-4"	
3075 (A)	LEFT	2	10'-2" x 2'-4"	
3075 (B)	RIGHT	2	10'-2" x 2'-4"	
3125	LEFT & RIGHT	3	15'-1" x 2'-4"	
3136	RIGHT	4	19'-10" x 2'-4"	

GIFFIN • BOLTE • JURGENS
 ARCHITECTS

815 S.W. SECOND AVENUE, PORTLAND, OREGON 97204
 (503) 223-0992 • www.gbjaarch.com • FAX (503) 294-3961



MultiCare

EMERGENCY DEPARTMENT & CANCER CENTER EXPANSION

TACOMA, WASHINGTON

Date 09-26-2008
 Scale 3/8"=1'-0"
 Drawn By PLZ
 Job No. 4034

CASEWORK
 DETAILS

A10
 13