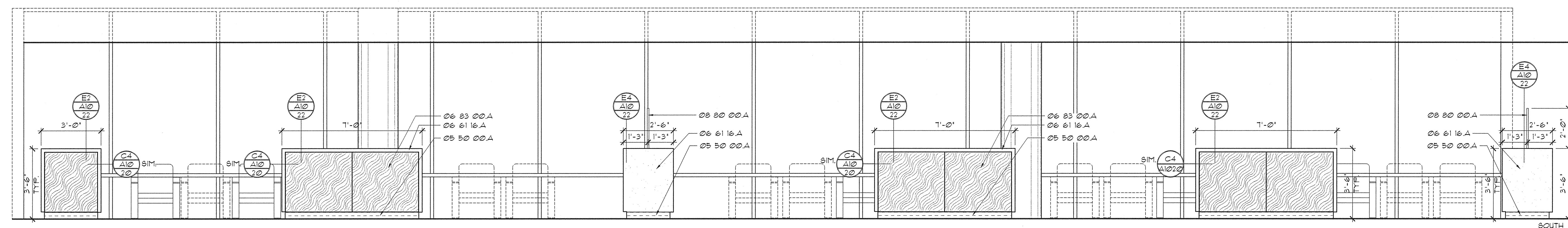
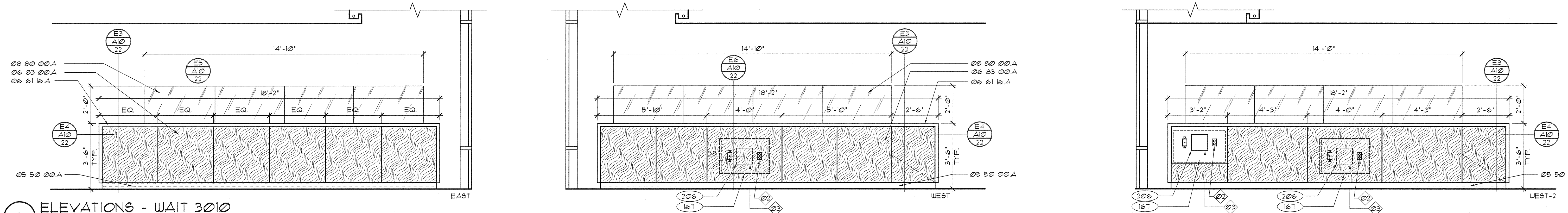


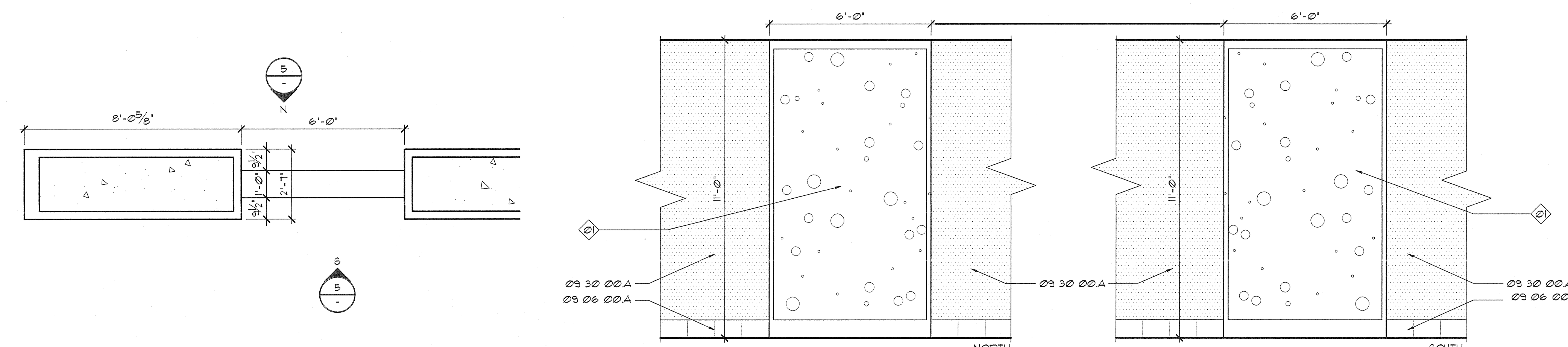
1 PLAN - WAIT 3009/3010



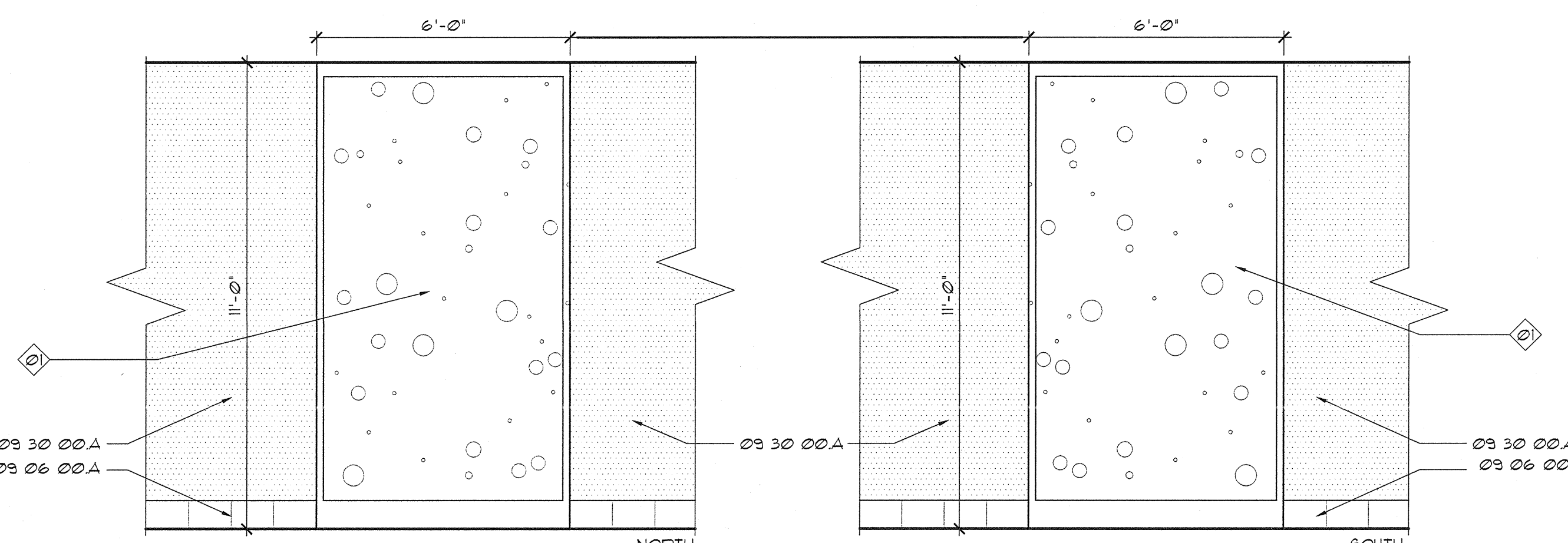
2 ELEVATIONS - WAIT 3009/3010



3 ELEVATIONS - WAIT 3010



4 PLAN - WAIT 3020 / ELEV./LOBBY 3019



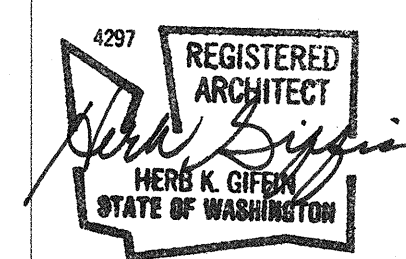
5 ELEVATIONS - WAIT 3020 / ELEV./LOBBY 3019

- MATERIAL LEGEND**
- Division 05 Metals**
- 05 50 00.A STAINLESS STEEL BASE
- Division 06 Wood & Plastics**
- 06 61 16.A SOLID SURFACE AS SCHEDULED IN SECTION 03 06 00
- 06 03 00.A FIBER REINFORCED LAMINATE AS SCHEDULED IN SECTION 03 06 00
- Division 08 Doors & Windows**
- 08 00 00.A G-13 GLAZING
- Division 09 Finishes**
- 09 06 00.A SCHEDULED BASE
- 09 30 00.A TILE AS SCHEDULED IN SECTION 09 06 00.

- GENERAL NOTES**
- A. MATERIAL LEGEND CON DOC REFERENCES APPLY TO THIS DUG. ONLY.
1. BUBBLE WALL APPROX. 2'-1" x 6'-0" - BY BUBBLE WALL. HFS. VERIFY R.O. DIMENSIONS AND COORDINATE WITH WALL FINISHES.
2. INSTALL PER MANUFACTURERS METAL STUD KIT INSTRUCTIONS.
3. COORDINATE LOCATION OF POWER AND DATA J-BOX WITH FINAL LOCATION OF TV BRACKET. POWER AND DATA J-BOXES TO BE PLACED BEHIND MONITOR BUT ASSURED THAT THE DATA AND POWER CONNECTION CAN BE MADE WITHOUT SHARP BENDS IN CONNECTOR LEADS.
- LEGEND**
- E1 DUPLICATION RECEPTACLE W/ EMERGENCY POWER
- E2 DUPLICATION RECEPTACLE
- E3 FOURPLEX RECEPTACLE
- E4 TELEPHONE/DATA JACK COMBINED (STANDARD 4 JACKS PER PLATE)

GIFFIN • BOLTE • JURGENS
ARCHITECTS

815 S.W. SECOND AVENUE - PORTLAND, OREGON 97204
(503) 223-0992 www.gbjarch.com FAX (503) 294-3961



MultiCare
EMERGENCY DEPARTMENT & CANCER CENTER EXPANSION
TACOMA, WASHINGTON

Date 09-26-2008
Scale 3/8"=1'-0"
Drawn By PLZ
Job No. 4034

CASEWORK
DETAILS

A10
14