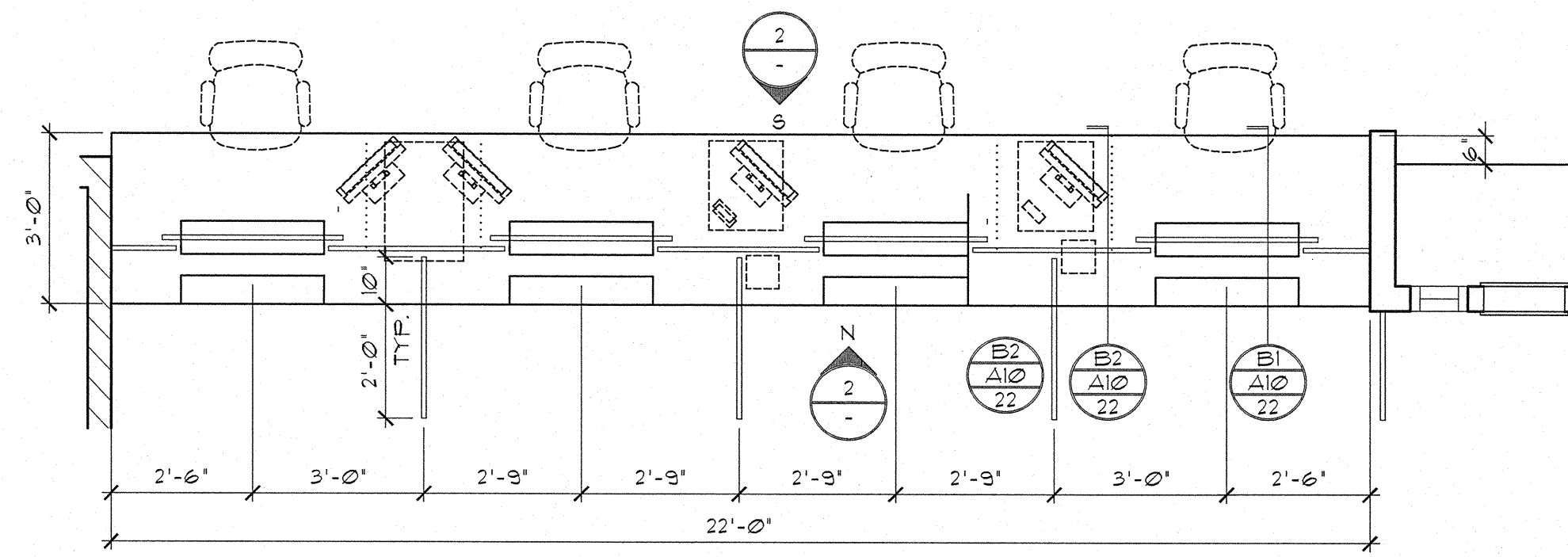
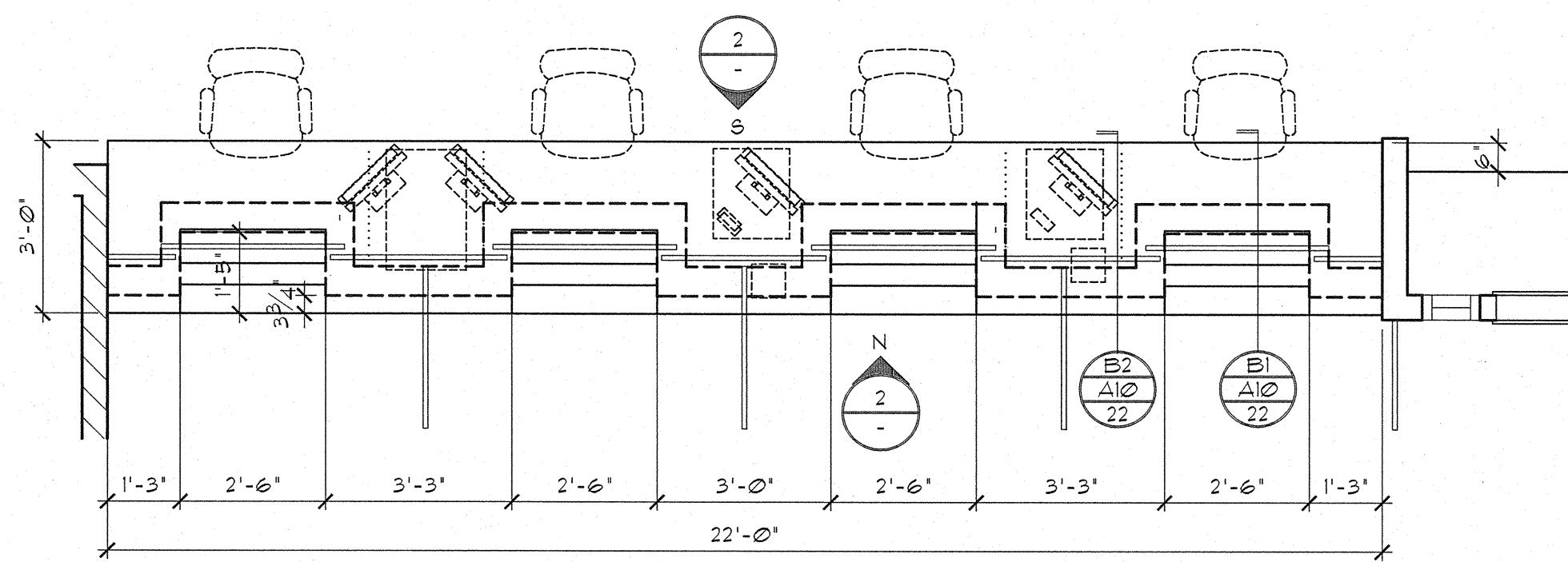


A

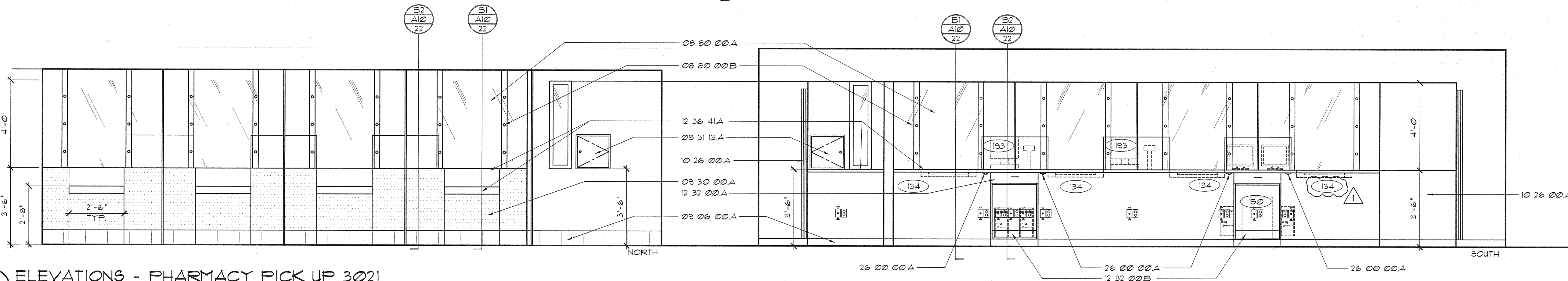


1 PLAN - PHARMACY PICK UP 3021



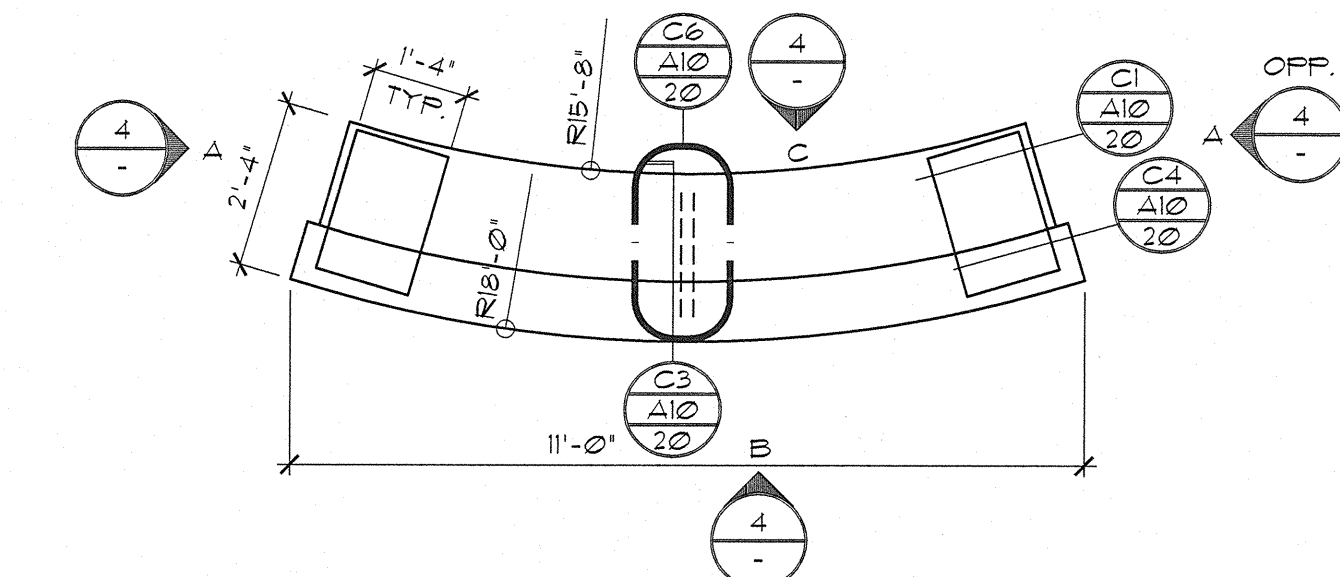
1a BASE WALL PLAN - PHARMACY PICK UP 3021

B

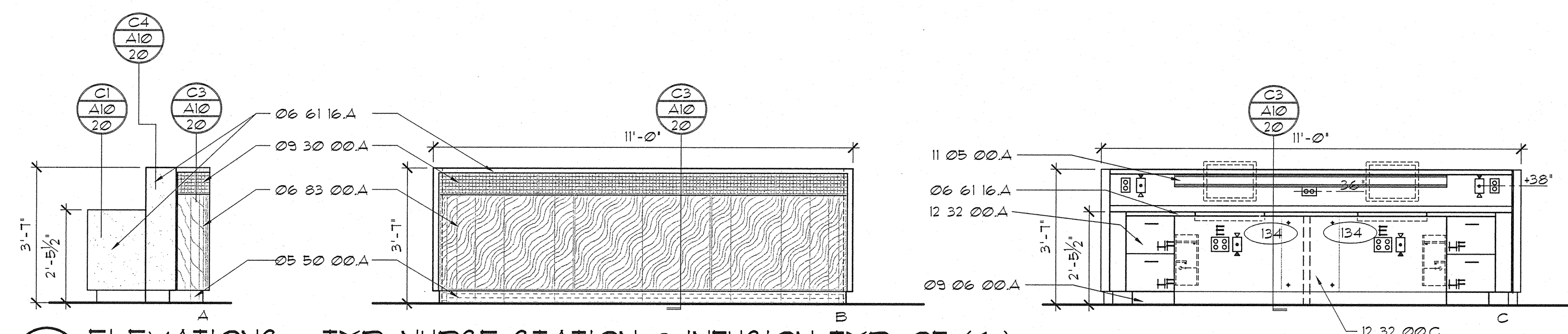


2 ELEVATIONS - PHARMACY PICK UP 3021

C

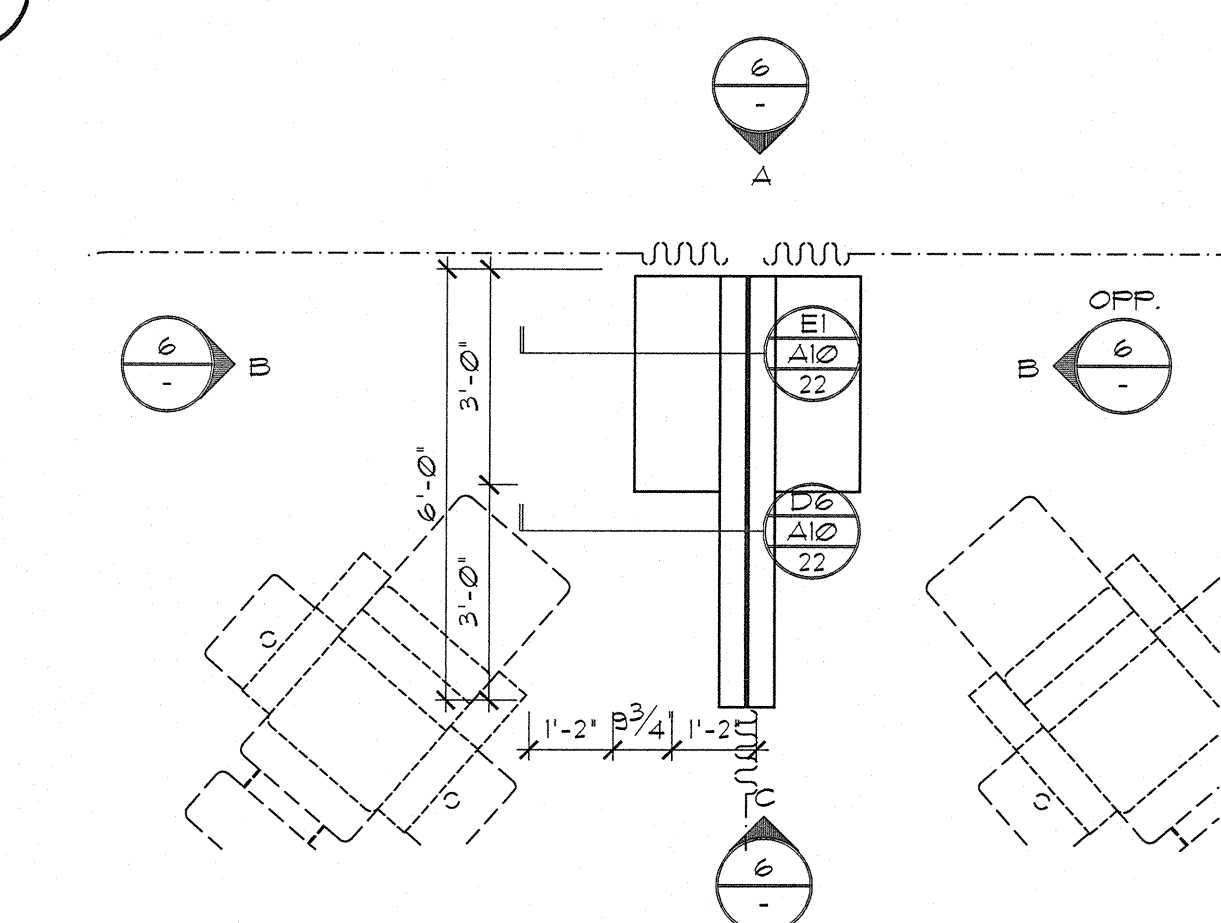


3 PLAN - TYP. NURSE STATION @ INFUSION - TYP. OF (6)

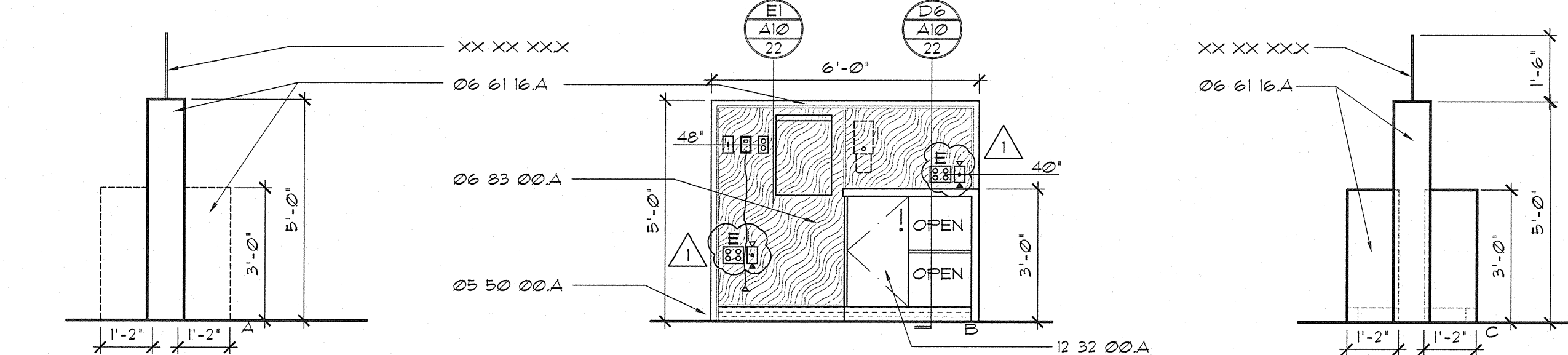


4 ELEVATIONS - TYP. NURSE STATION @ INFUSION TYP. OF (6)

D

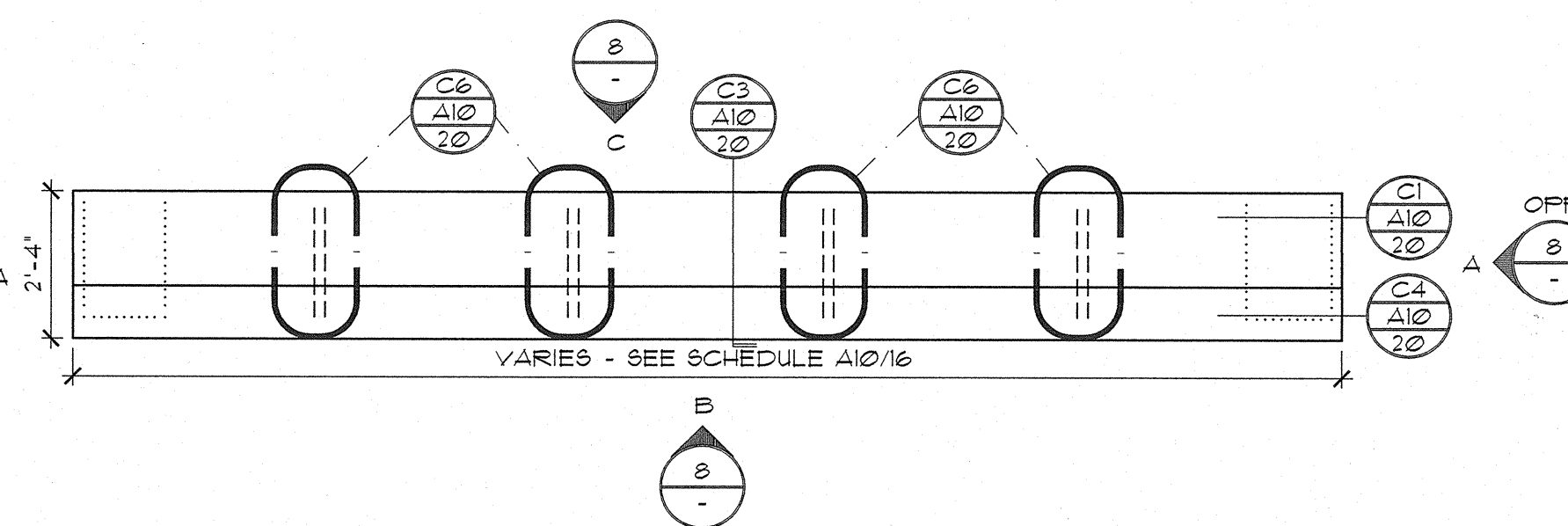


5 PLAN - INFUSION STATION - TYP. OF (5)

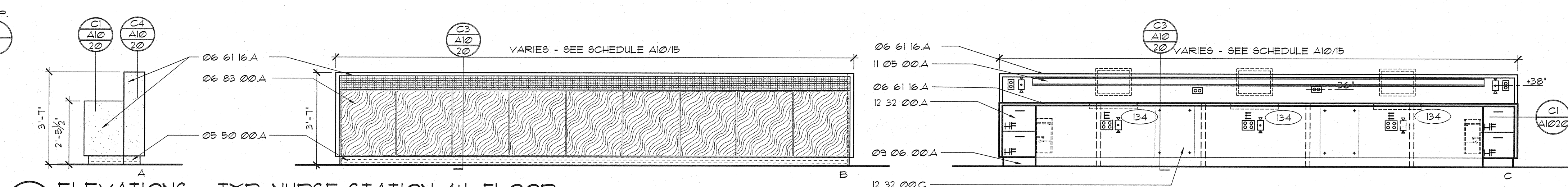


6 ELEVATIONS - INFUSION STATION - TYP. OF (5)

E



7 PLAN - TYP. NURSE STATION 4th FLOOR



8 ELEVATIONS - TYP. NURSE STATION 4th FLOOR

# MATERIAL LEGEND

## Division 05 Metals

05 50 00.A STAINLESS STEEL BASE

## Division 06 Wood & Plastics

06 61 16.A SOLID SURFACE AS SCHEDULED IN SECTION 09 06 00

06 03 00.A FIBER REINFORCED LAMINATE AS SCHEDULED IN SECTION 09 06 00

## Division 08 Doors & Windows

08 31 13.A PASS THRU ACCESS DOOR

08 00 00.A G-10 SECURITY GLAZING

B STANDOFF STUDS

## Division 09 Finishes

09 06 00.A SCHEDULED BASE AS SCHEDULED IN SECTION 09 06 00

09 30 00.A TILE AS SCHEDULED IN SECTION 09 06 00

## Division 10 Specialties

10 26 00.A WALL PROTECTION (WP-02)

## Division 11 Equipment

11 05 00.A GCM MONITOR MOUNTING CHANNEL

## Division 12 Furnishings

12 32 00.A PLASTIC LAMINATE CLAD CASEWORK

B HEAVY DUTY PULL OUT SHELF FOR PRINTER

C PLASTIC LAMINATE CLAD ACCESS PANEL

12 36 41.A QUARTZ SURFACE

## Division 25 Electrical

26 00 00.A PANIC BUTTON

## GENERAL NOTES

A. MATERIAL LEGEND CON DOC REFERENCES APPLY TO THIS DUG. ONLY.

◇ EQUIPMENT ITEM MOUNTED TO SIDE OF CASEWORK.

## LEGEND

□ DUPLEX RECEPTACLE W/ EMERGENCY POWER

□ DUPLEX RECEPTACLE

□ TELEPHONE/DATA JACK COMBINED (STANDARD 4 JACKS PER PLATE)

□ QUADPLEX RECEPTACLE W/ EMERGENCY POWER

# 4th FLOOR NURSE STATIONS

ROOM NO.	RETURN	SEATS	DIMENSIONS	NOTES
4016	-	2	11'-2" x 2'-4"	
4091	-	2	10'-1" x 2'-4"	
4132	-	3	20'-0" x 2'-4"	4132 SHOWN ON A1015