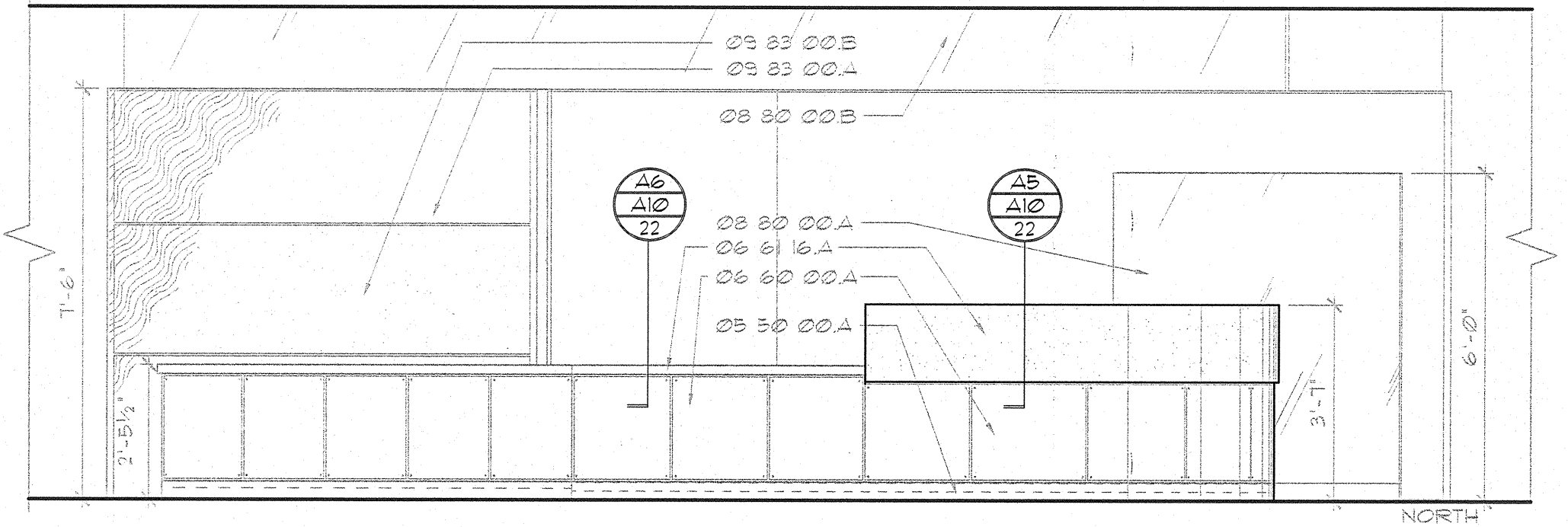
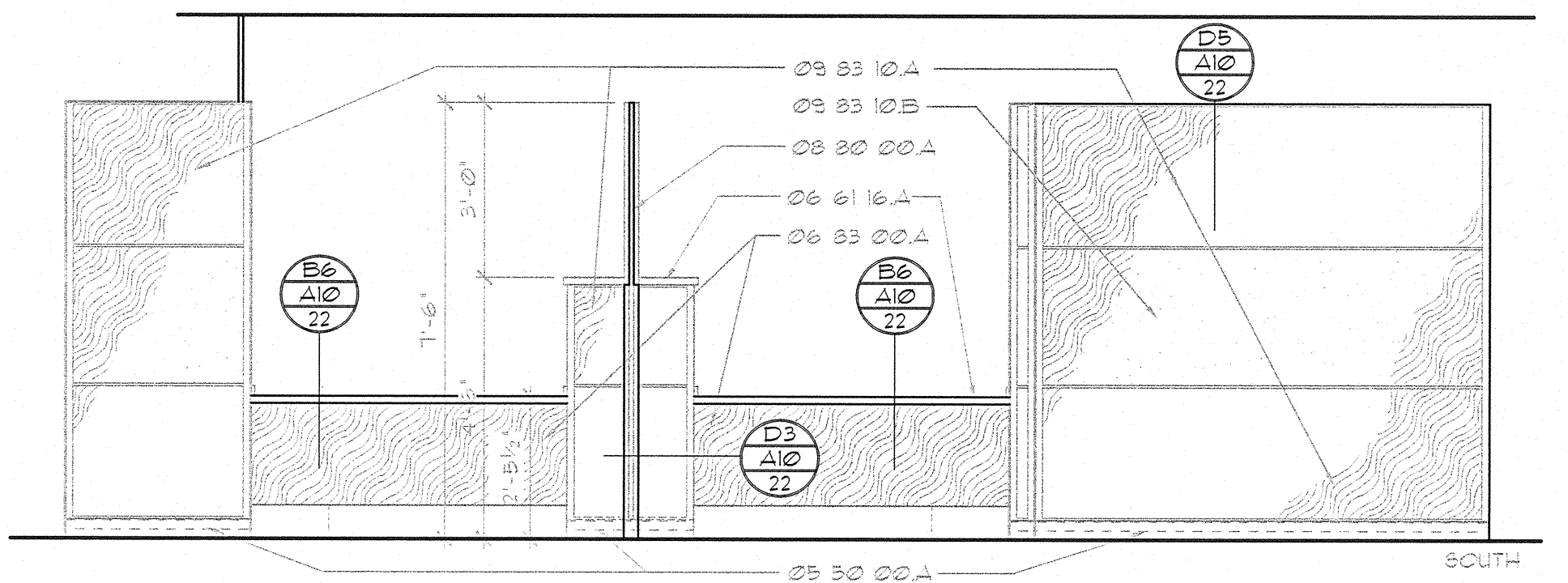


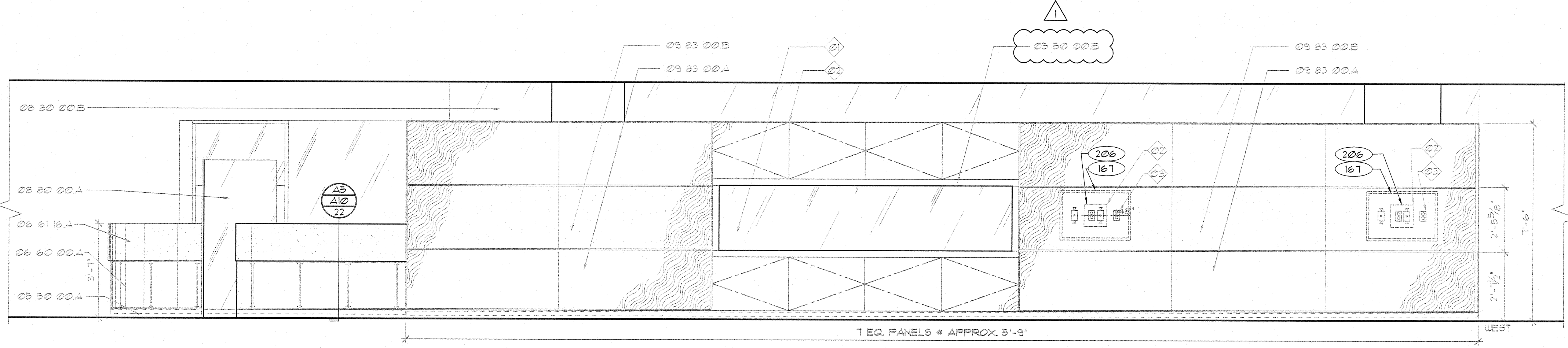
1 PLAN - RECEPTION 4001, ADMITTING 4002, DISCHARGE 4142 & 4143 / WAIT 4141A



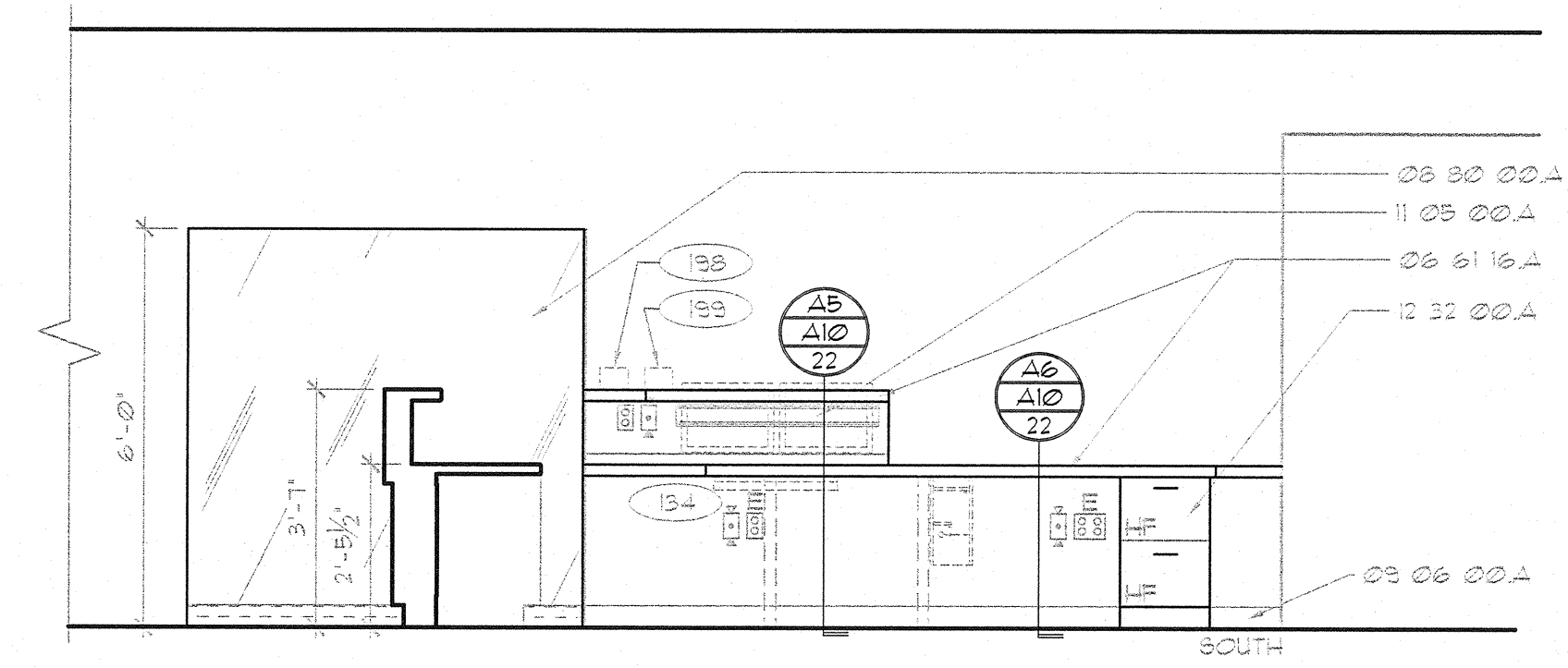
2 ELEVATIONS - RECEPTION 4001



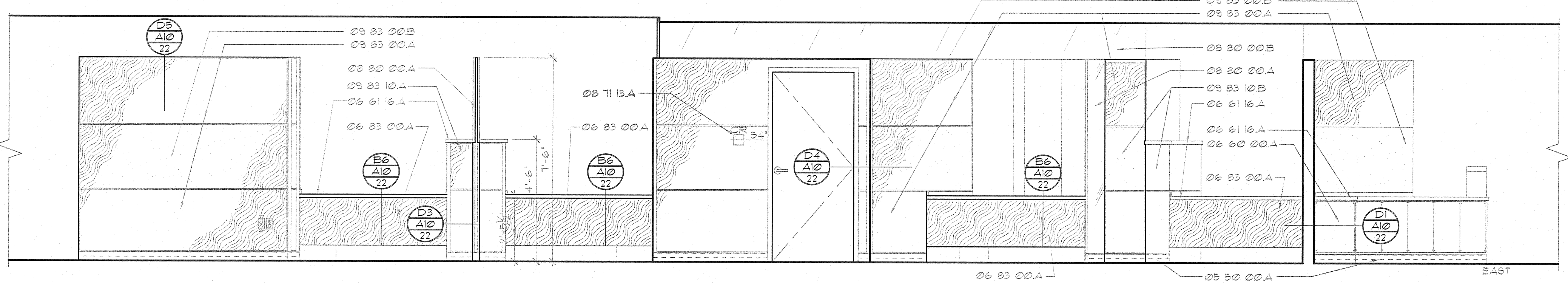
3 ELEVATIONS - RECEPTION 4001



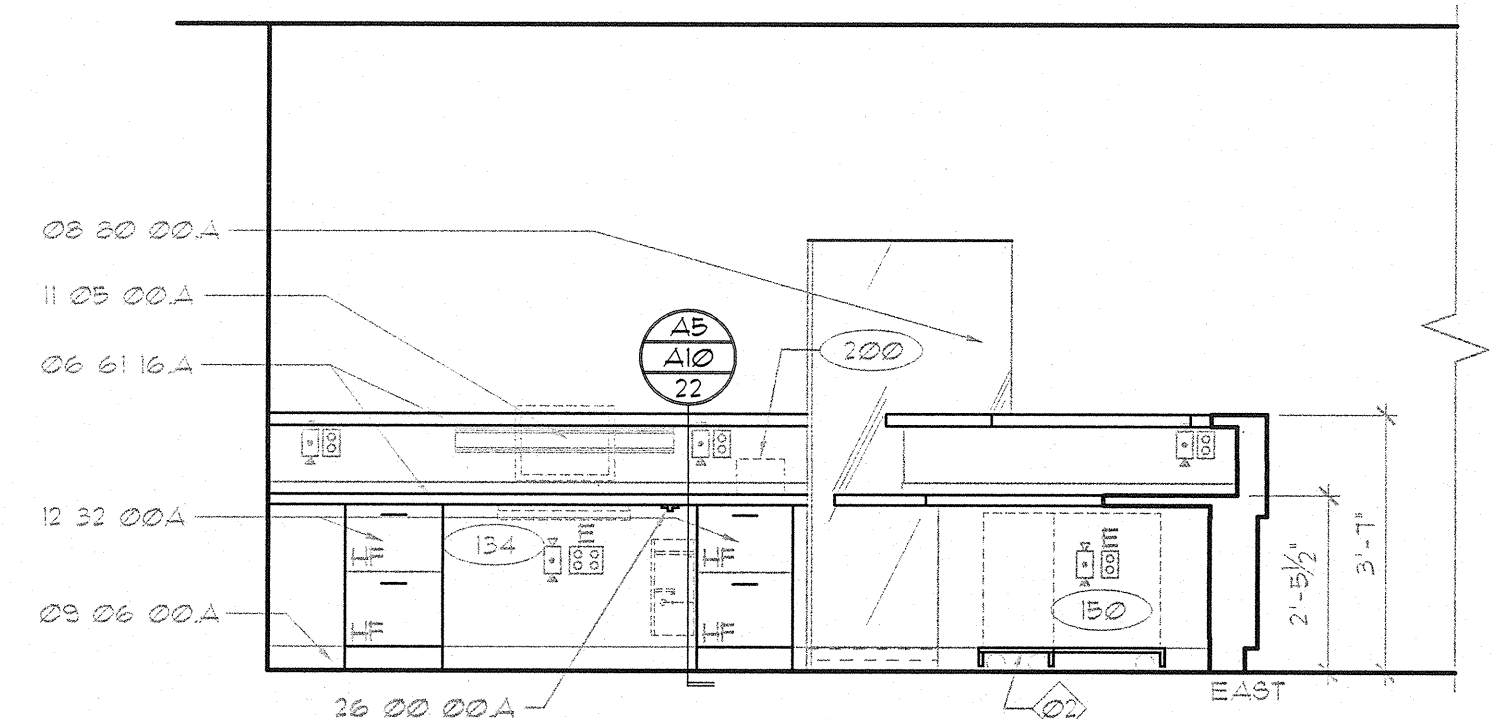
4 ELEVATION - RECEPTION 4001, ADMITTING 4002, DISCHARGE 4142 & 4143 / WAIT 4141A



5 ELEVATIONS - RECEPTION 4001



6 ELEVATION - RECEPTION 4001, ADMITTING 4002, DISCHARGE 4142 & 4143 / WAIT 4141A



7 ELEVATIONS - RECEPTION 4001

- MATERIAL LEGEND**
- Division 05 Metals**
- Division 06 Wood & Plastics**
- Division 08 Doors & Windows**
- Division 09 Finishes**
- Division 11 Equipment**
- Division 12 Furnishings**
- Division 26 Electrical**
- GENERAL NOTES**
- MATERIAL LEGEND CON DOC REFERENCES APPLY TO THIS DOC. ONLY.
 - DIMENSIONS ARE TO FACE OF WALL, NOT INCLUDING FINISH, UNLESS OTHERWISE NOTED.
 - AQUARIUM APPROX 7'-8" X 11'-6" WITH T.S. STEEL FRAME BY AQUARIUM MFG. COORDINATE CASEWORK DETAILS AND DIMENSIONS WITH AQUARIUM DESIGN.
 - CABINET W/ LOCK OPEN & TOP FOR AQUARIUM MAINTENANCE.
 - INSTALL PER MANUFACTURERS METAL STUD KIT INSTRUCTIONS.
 - COORDINATE LOCATION OF POWER AND DATA J-BOX WITH FINAL LOCATION OF TV/ BRACKET. POWER AND DATA J-BOXES TO BE PLACED BEHIND MONITOR BUT ASSURED THAT THE DATA AND POWER CONNECTION CAN BE MADE WITHOUT SHARP BENDS IN CONNECTOR LEADS.
 - CURER PROVIDED 4" ROLLER BASE.
- LEGEND**
- DUPLEX RECEPTACLE W/ EMERGENCY POWER
- DUPLEX RECEPTACLE
- TELEPHONE/ DATA JACK
- COMBINED (STANDARD 4) DATA/PHONE RECEPTACLE W/ EMERGENCY POWER