

1

2

3

4

5

6

7

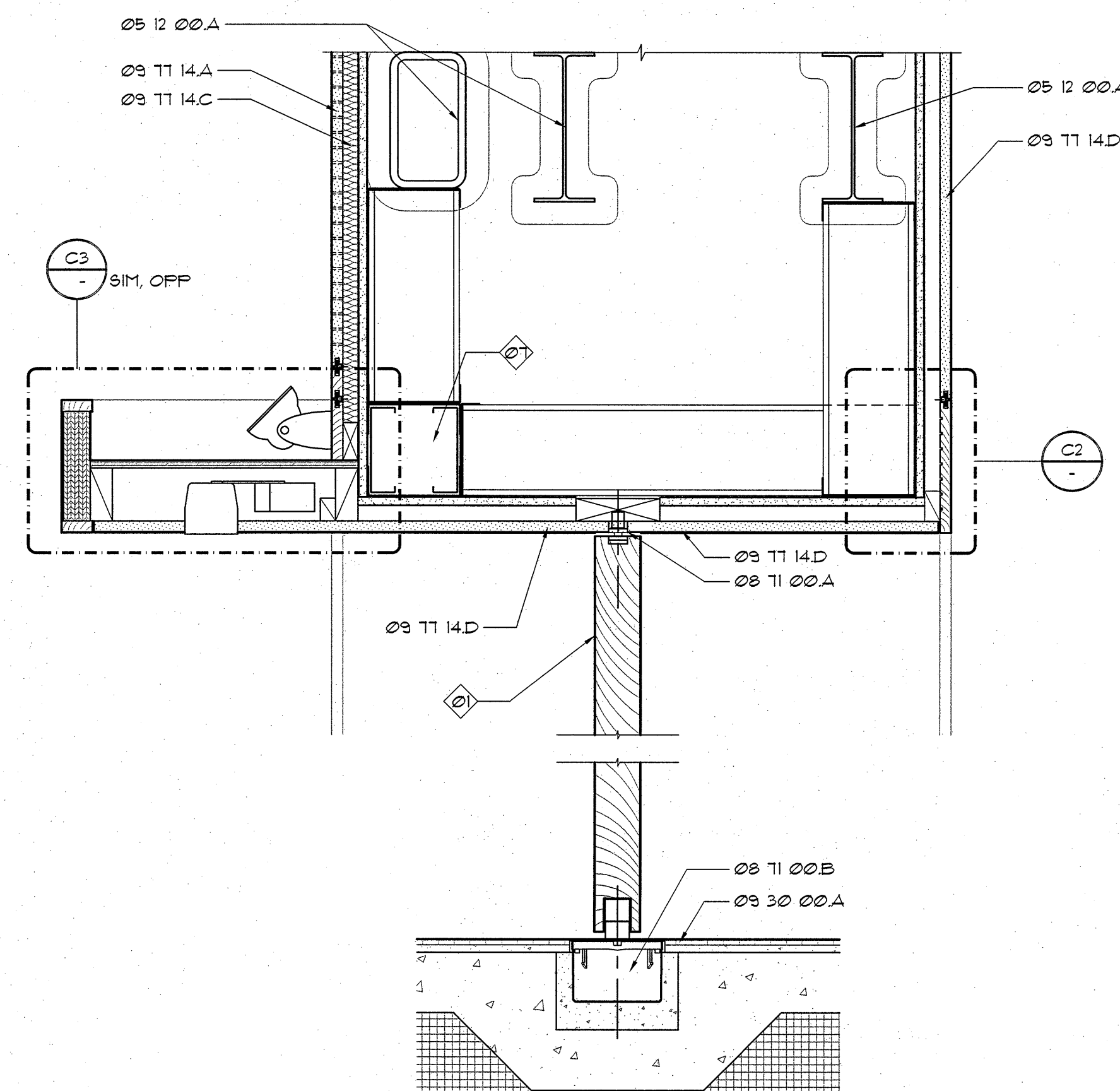
A

B

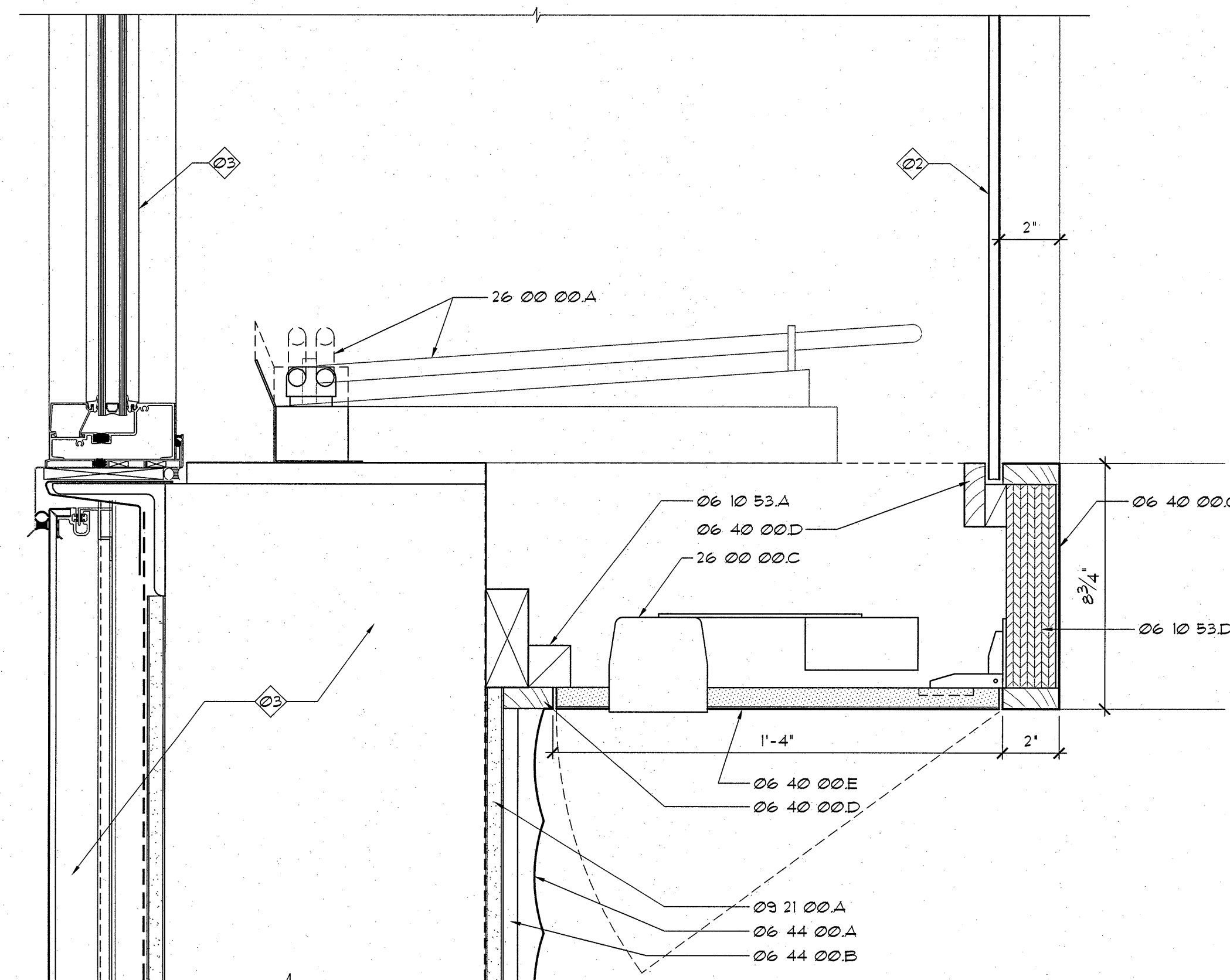
C

D

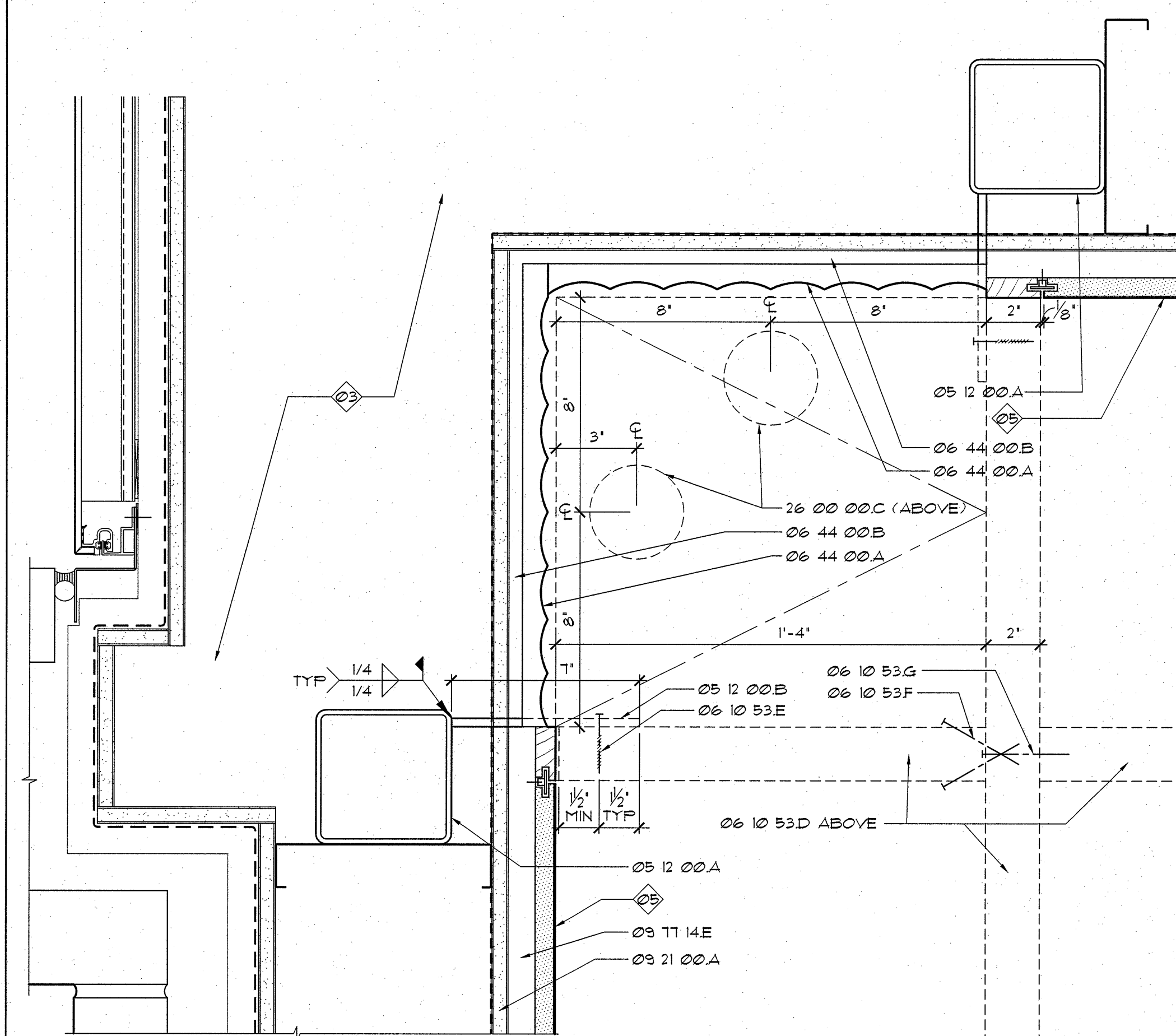
E



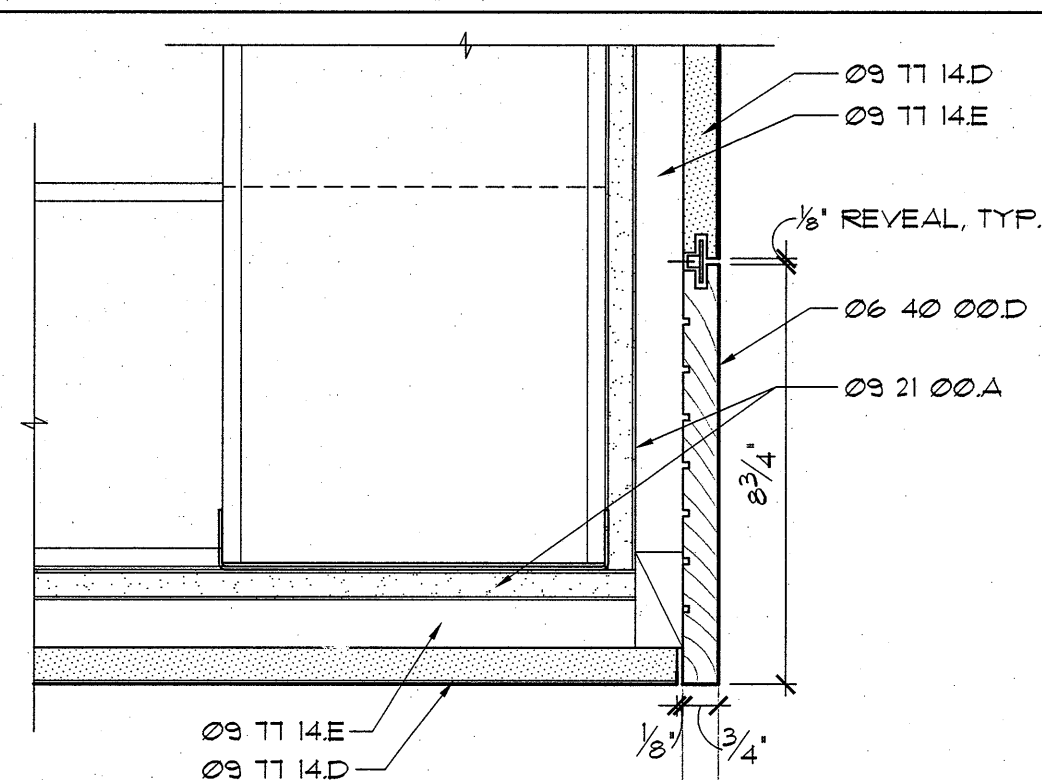
**B1 HEAD & SILL @ DOOR 3018**  
1'-1/2" = 1'-0"



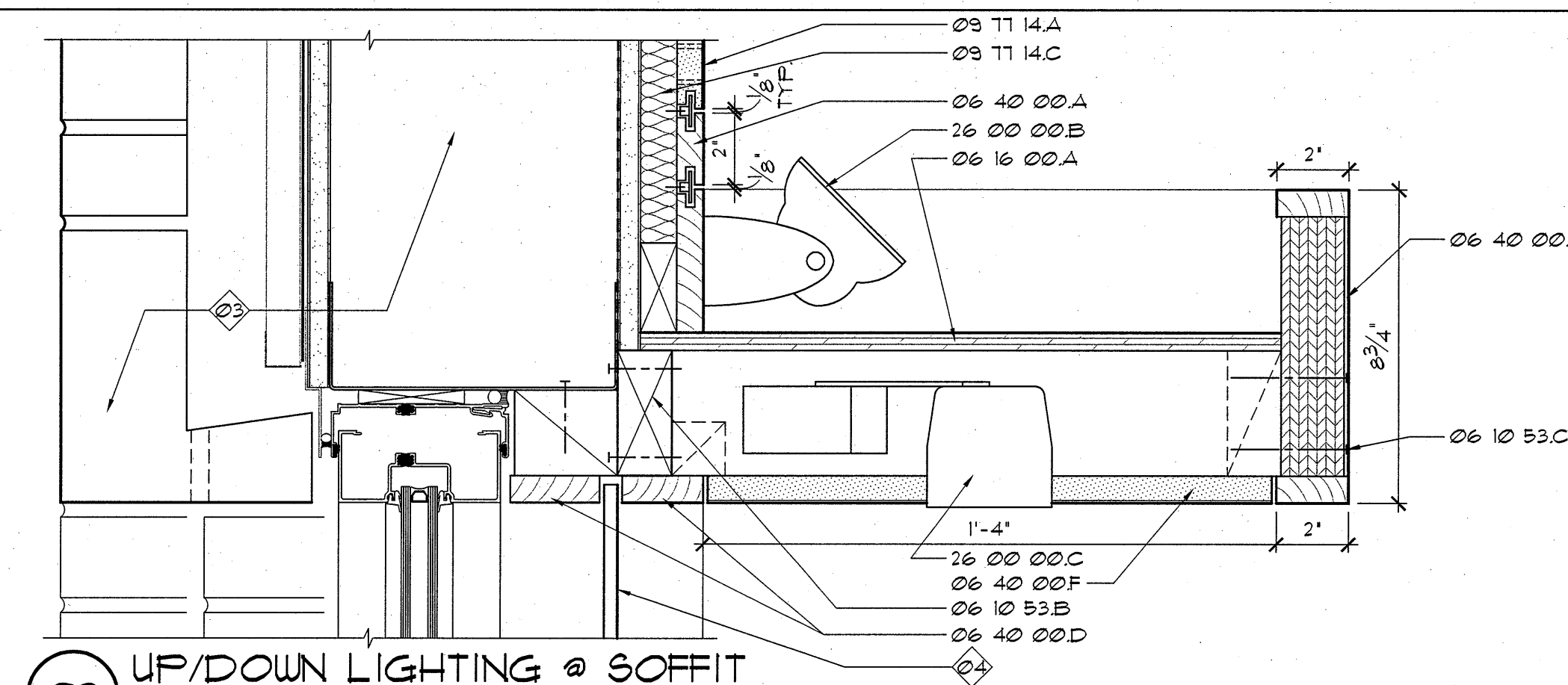
**B3 UP/DOWN LIGHTING @ CORNER SOFFIT & WINDOW**  
3" = 1'-0"



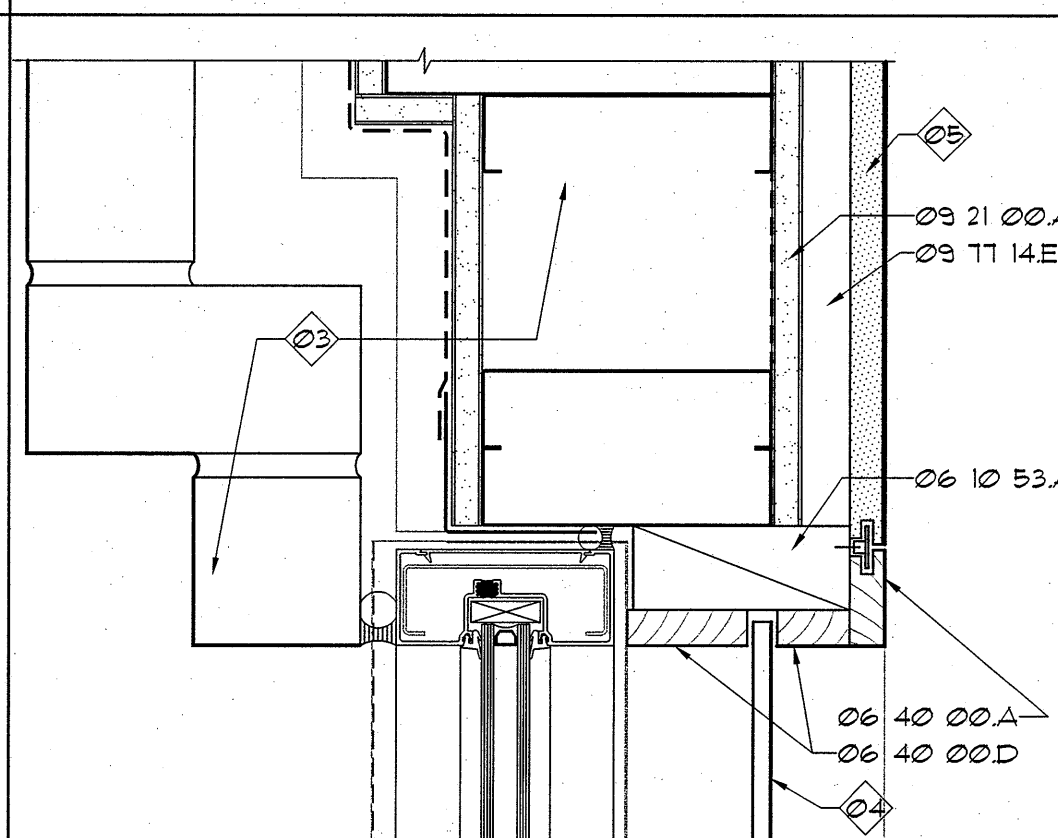
**B5 ORNAMENTAL WOOD PANEL @ CORNER**  
3" = 1'-0"



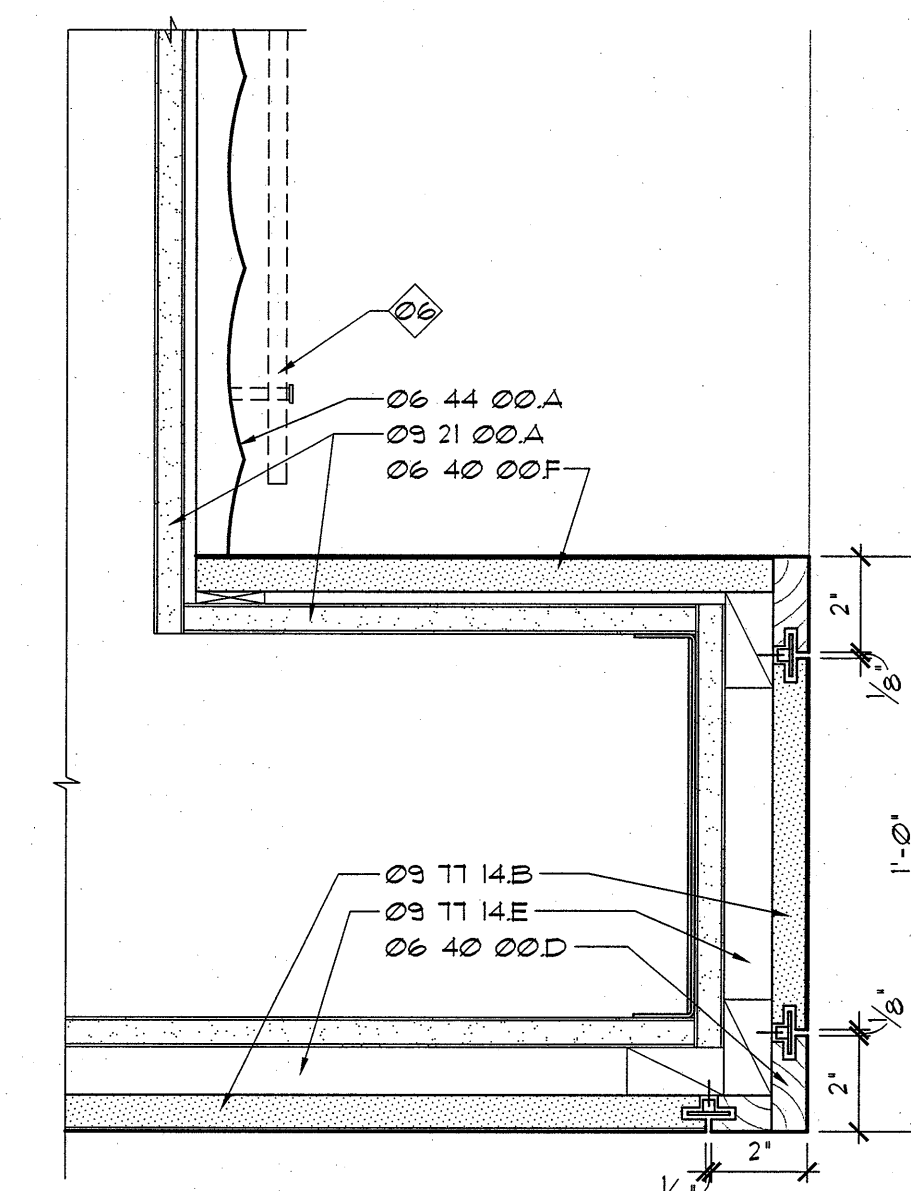
**C2 PANEL & TRIM @ DR. HEAD**  
3" = 1'-0"



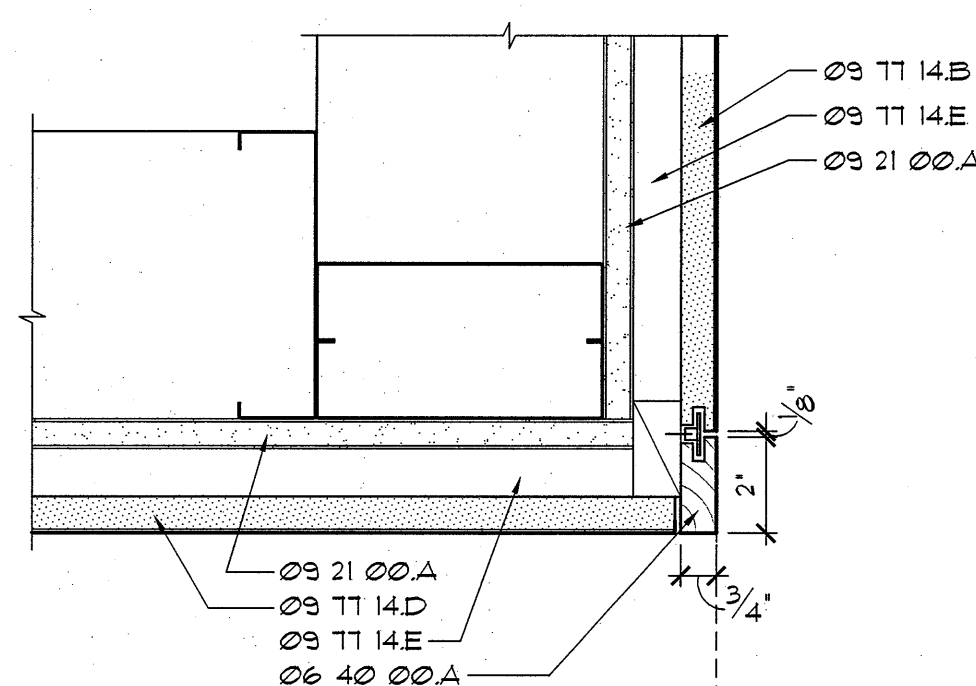
**C3 UP/DOWN LIGHTING @ SOFFIT**  
3" = 1'-0"



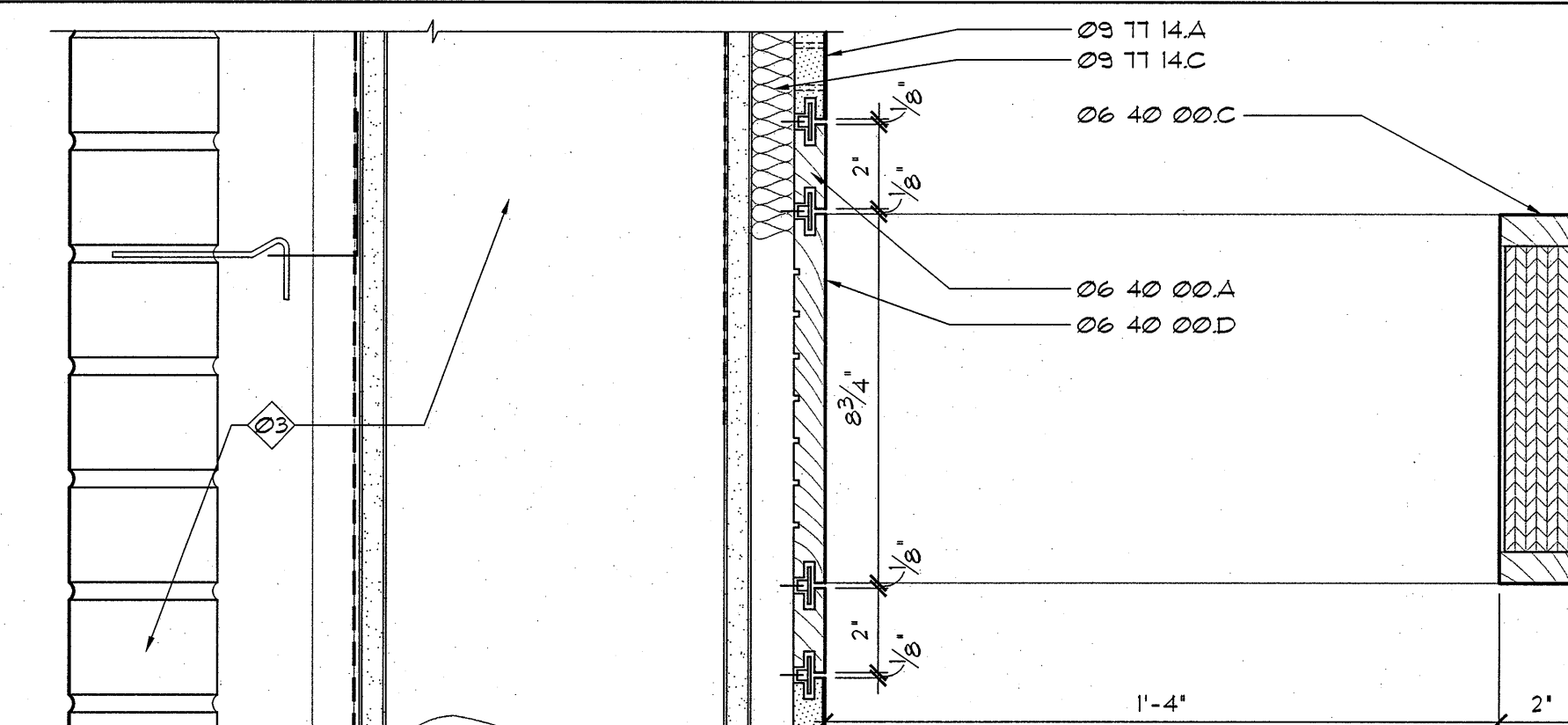
**C5 WINDOW JAMB**  
3" = 1'-0"



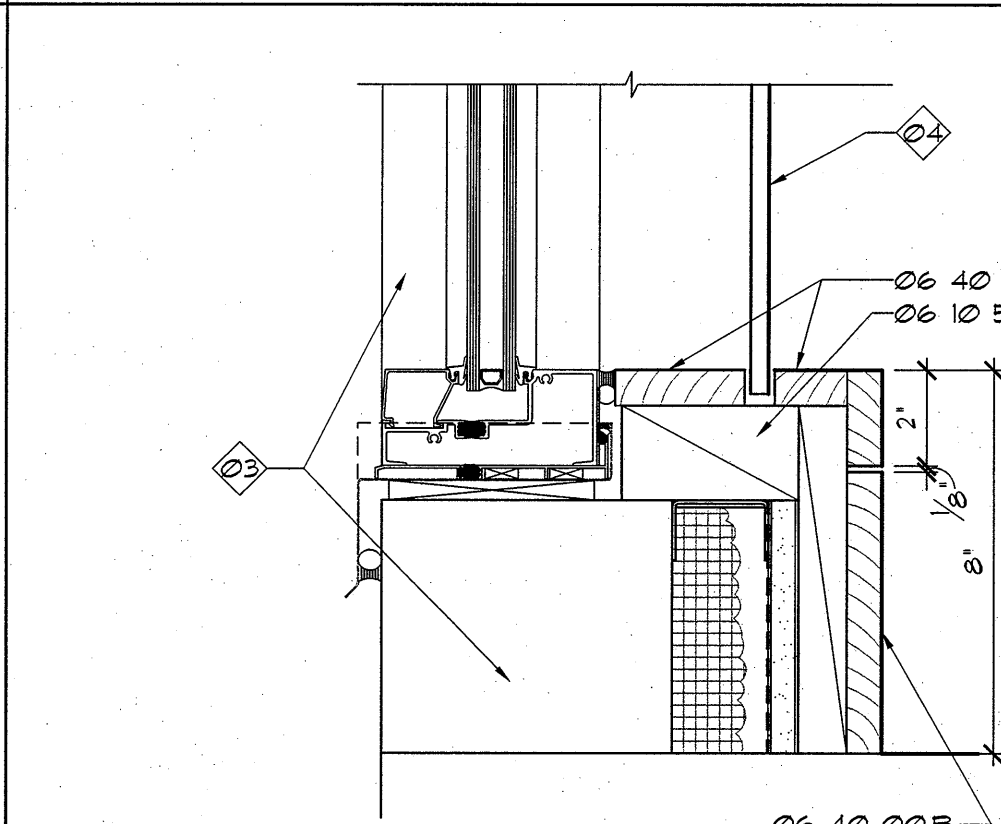
**D6 DISPLAY NICHE**  
3" = 1'-0"



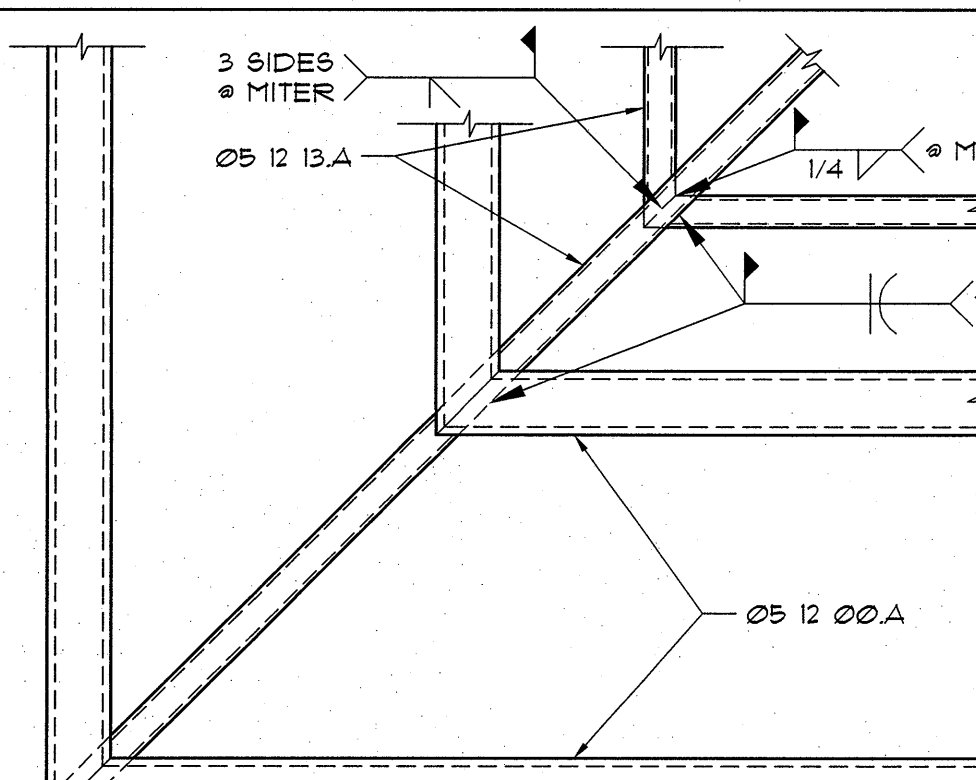
**D2 PANEL & TRIM @ DR. JAMB**  
3" = 1'-0"



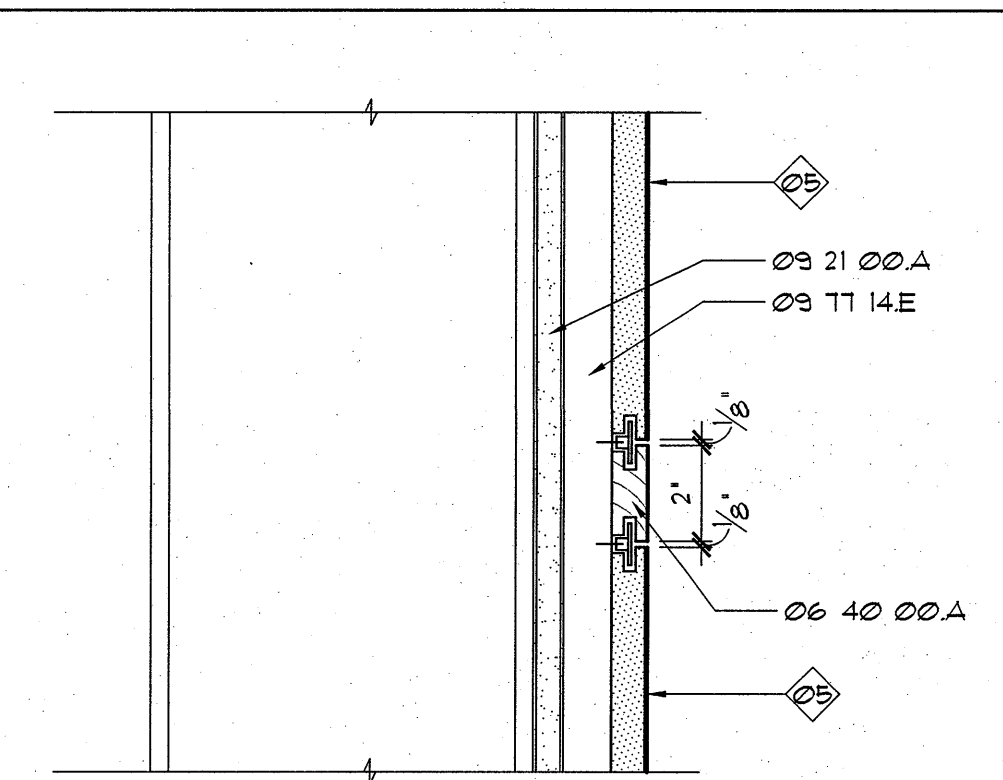
**D3 WOOD BEAM**  
3" = 1'-0"



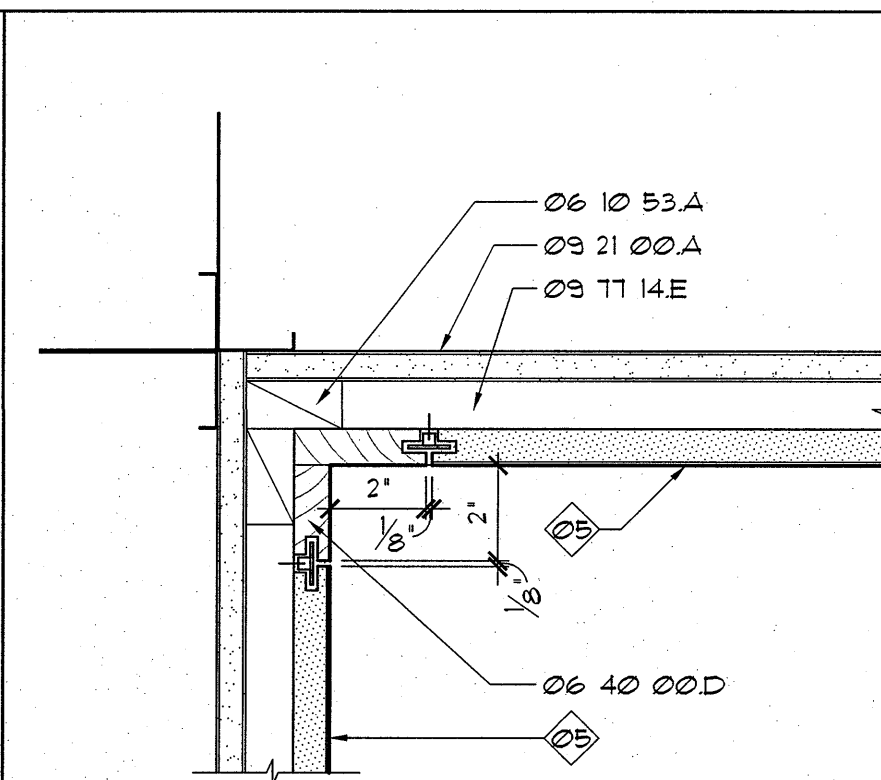
**D5 WINDOW SILL**  
3" = 1'-0"



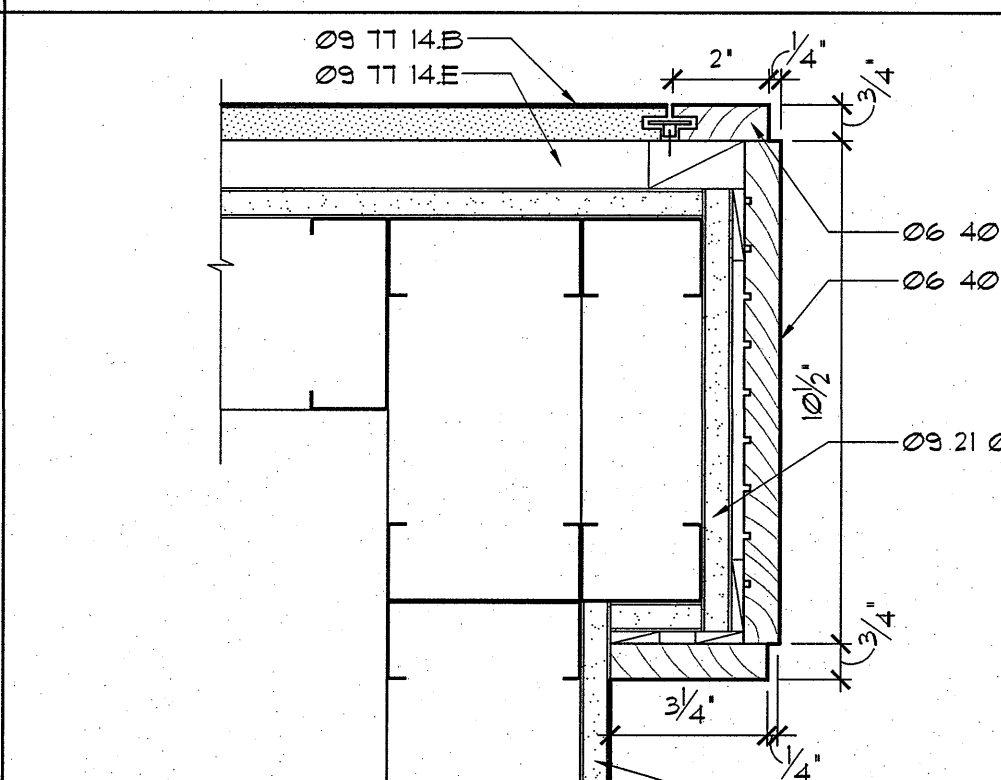
**E2 BEAM CONN. @ CORNER**  
1" = 1'-0"



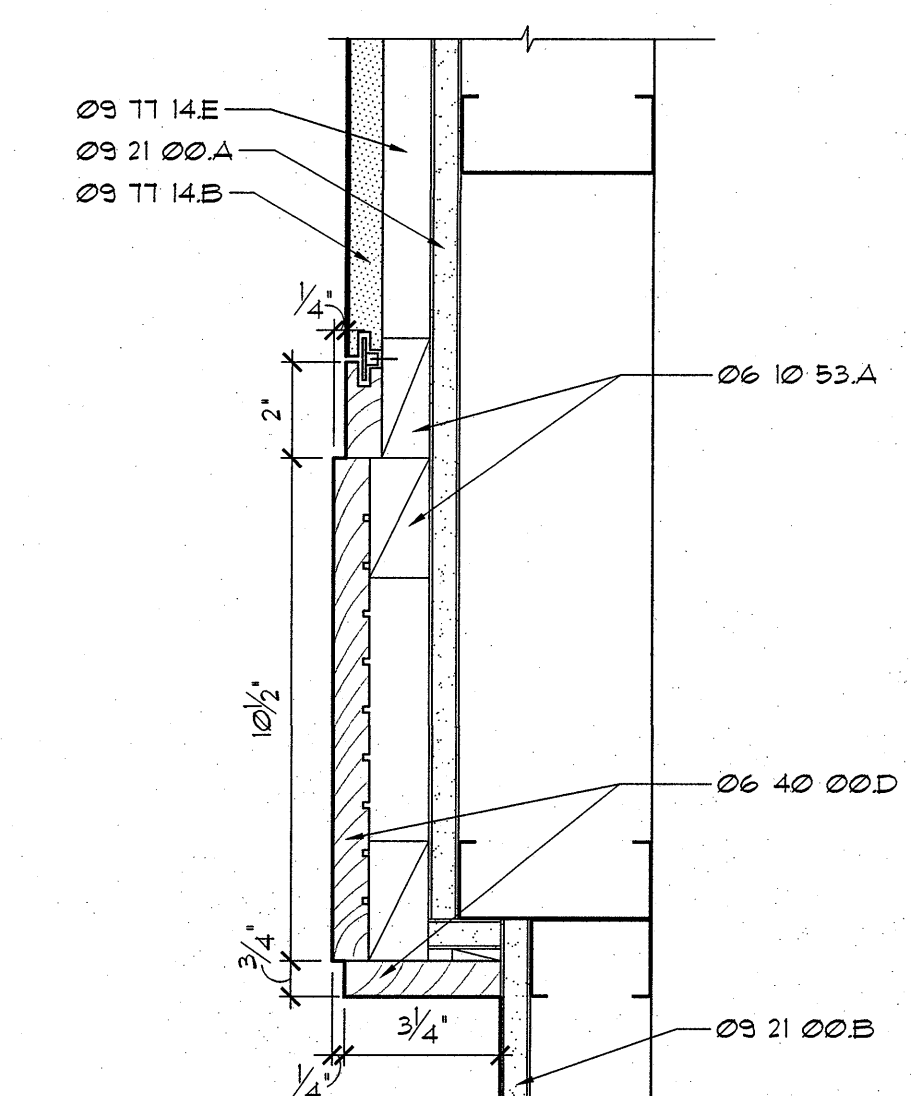
**E3 TYPICAL PANEL JOINT**  
3" = 1'-0"



**E4 INSIDE CORNER TRIM**  
3" = 1'-0"



**E5 WALL PANEL TRANSITION**  
3" = 1'-0"



**E6 WALL PANEL TRANSITION**  
3" = 1'-0"

#### MATERIAL LEGEND

##### Division 05 Metals

05 12 00A STRUCTURAL STEEL - REFERENCE  
STRUCTURAL DRAWINGS

B PLATE 3/8" x 1/4", TYP

05 12 13A HSS 6x2x3/16, TYP

##### Division 06 Wood, Plastics & Composites

06 10 53A WOOD BLOCKING AS REQ'D

B 2x4 LEDGER W/ (2) #2 SCREWS @ EA MTL STUD,  
TYP @ SOFFIT

C (2) 16d NAILS, TYP

D 1 1/2" x 1/4" LSL BEAM

E (3) SDS 2512 WOOD SCREWS @ 24" O.C., TYP

F (2) 8d TOE NAILS STAGGERED

G (3) 16d @ 24" O.C.

06 16 00A 1/2" PLYWOOD

06 40 00A 3/4" x 2" HARDWOOD TRIM (W-1)

B HARDWOOD BASE (W-1)

C WOOD VALENTINE WITH W-1 VENEER AND TRIM

D HARDWOOD TRIM (W-1)

E WOOD VENEER DOOR (W-1) WITH 1/2" HARDWOOD  
EDGE BAND (W-1) TYPICAL, FLUSH FULL W/ LATCH  
& CONCEALED HINGES

F VENEER PANEL (W-1)

06 44 00A ORNAMENTAL WOOD PANELS

B 1/2" FURRING

##### Division 08 Doors & Windows

08 11 00A CENTER HUNG TOP PIVOT

B CENTER HUNG FLOOR CLOSER

##### Division 09 Finishes

09 21 00A GYP. BOARD SUBSTRATE

B GYP. BOARD FINISH, PAINTED

09 30 00A TILE FLOOR, SEE FINISH PLANS

09 11 14A PERFORATED ACOUSTIC WOOD PANELS  
(AUF-01, W-2)

B UN-PERFORATED ACOUSTIC WOOD PANELS  
(AUF-02, W-2)

C 1" ACOUSTICAL BATT W/ BLACK FACING

D UN-PERFORATED ACOUSTIC WOOD PANELS,  
(AUF-02, W-1)

E 1" FURRING @ 24" O.C.

##### Division 26 Electrical

26 00 00A FLUORESCENT COVE LIGHT

B SURFACE-MOUNTED FLUORESCENT WALL-WASH  
FIXTURE - SEE ELECTRICAL

C RECESSED DOWN-LIGHT

#### KEY NOTES

1. CUSTOM WOOD DOOR WITH CARVED PANELS

2. ART GLASS LANTERN, FOIC

3. SEE EXTERIOR DETAILS FOR  
ADDITIONAL INFO, TYP.

4. ART GLASS PANEL, FOIC

5. PANEL TYPE PER INTERIOR ELEVATIONS

6. GLASS DISPLAY PANEL, FOIC - FIN-MOUNTED

7. BOX HEADER PER 2/85.60