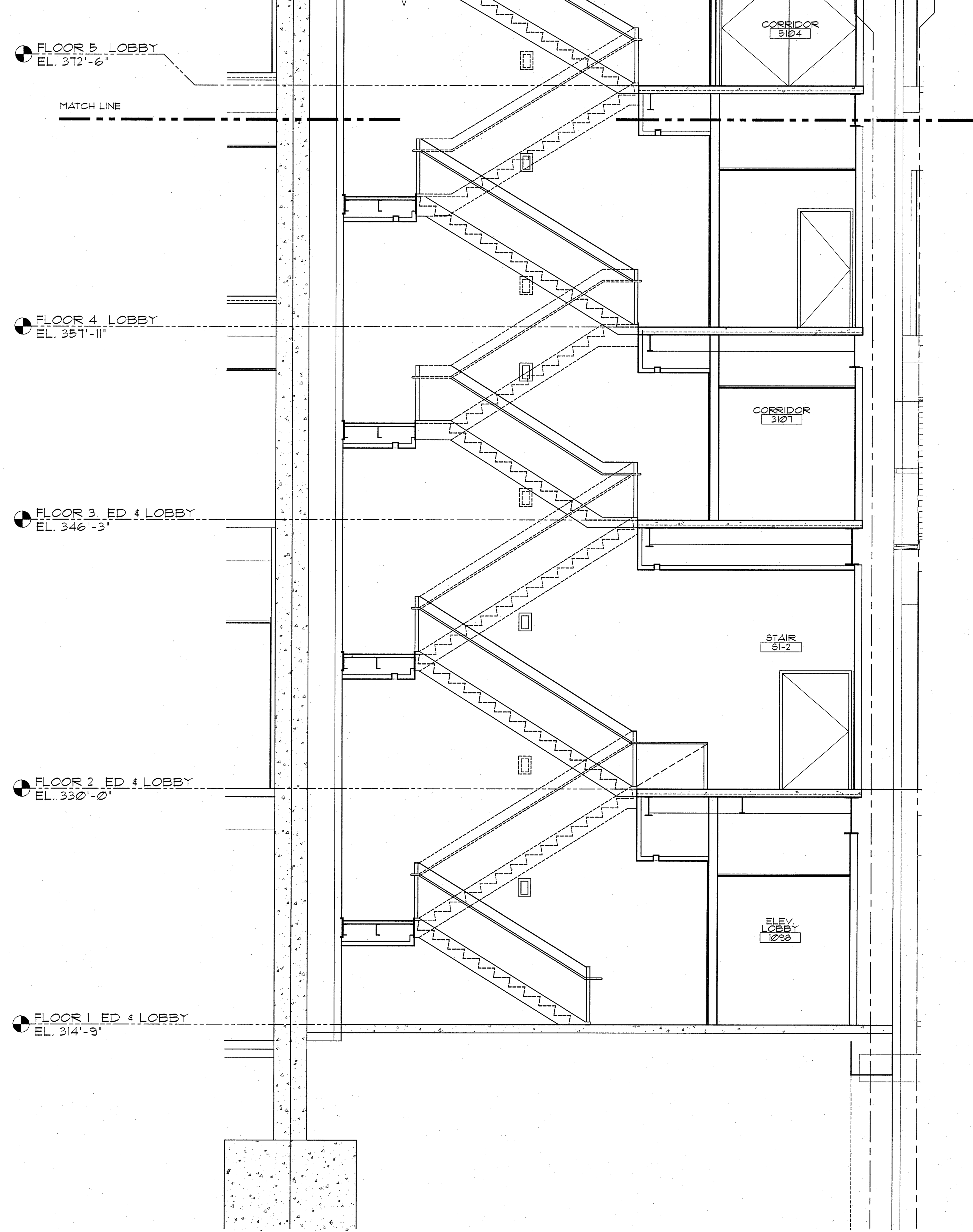
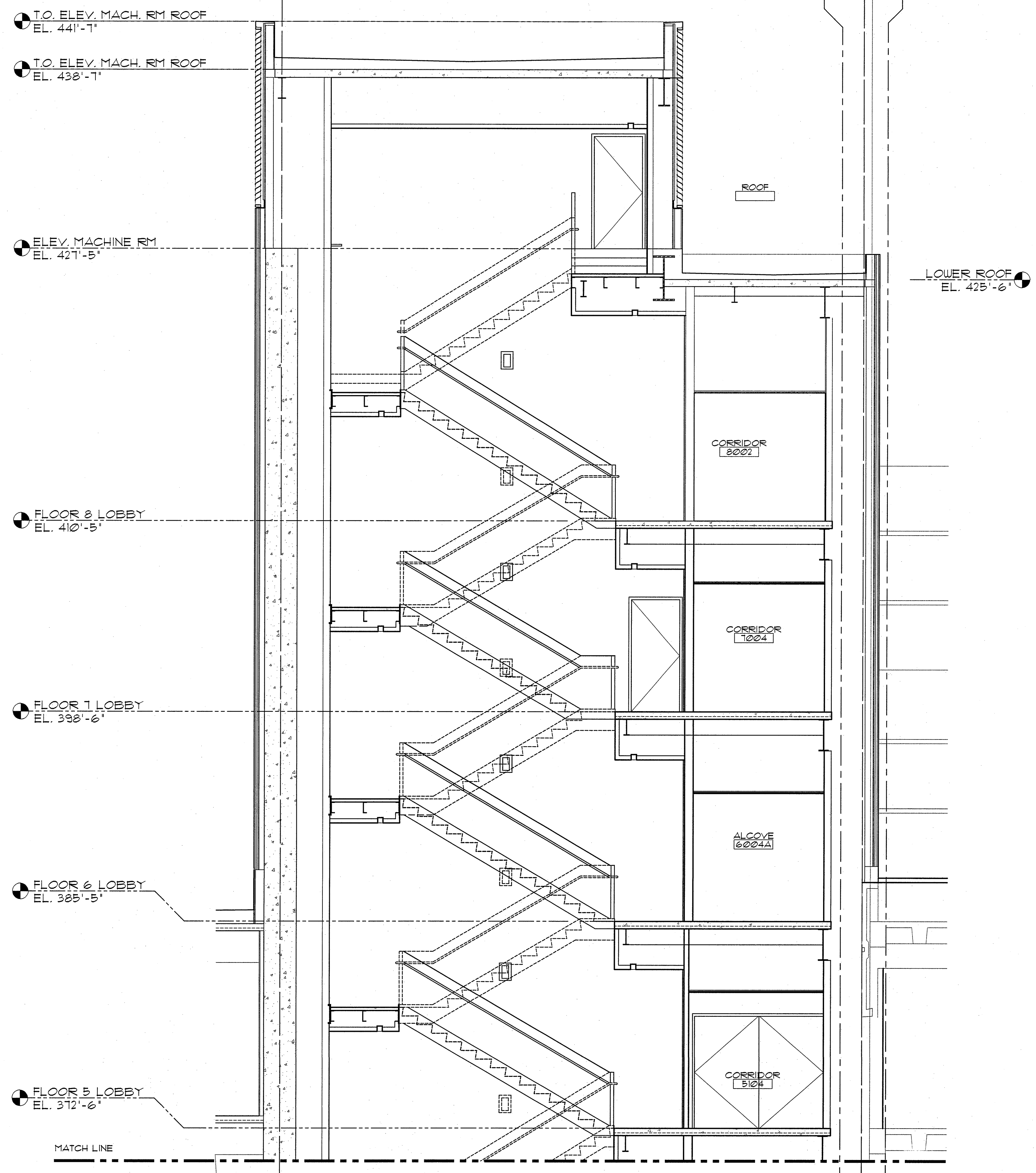


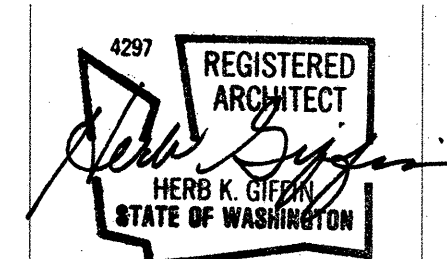
A  
B  
C  
D  
E

A  
B  
C  
D  
E



E1 STAIR #1 SECTION  
1/4" = 1'-0"

GIFFIN • BOLTE • JURGENS  
ARCHITECTS  
815 S.W. SECOND AVENUE • PORTLAND, OREGON 97204  
(503) 223-0992 www.gbarch.com FAX (503) 294-3961



MultiCare  
EMERGENCY DEPARTMENT & CANCER CENTER EXPANSION  
TACOMA, WASHINGTON


Date 09-26-2008  
Scale AS NOTED  
Drawn By RG  
Job No. 4034

STAIR 1  
SECTION  
A7  
09