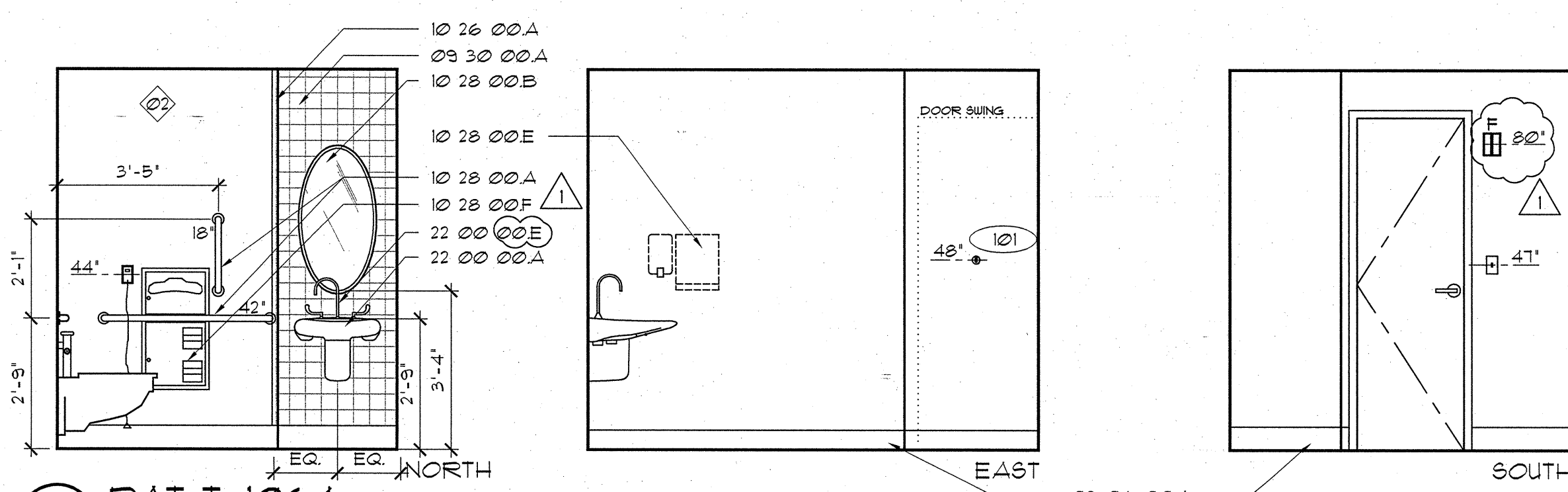
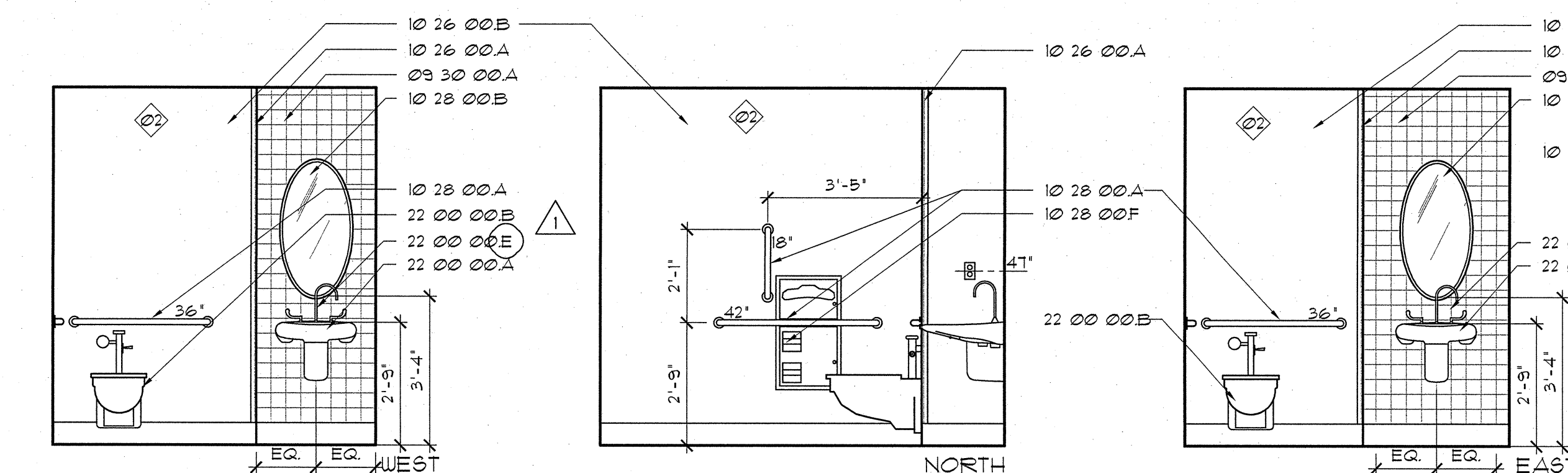


A



PAT T. 1064

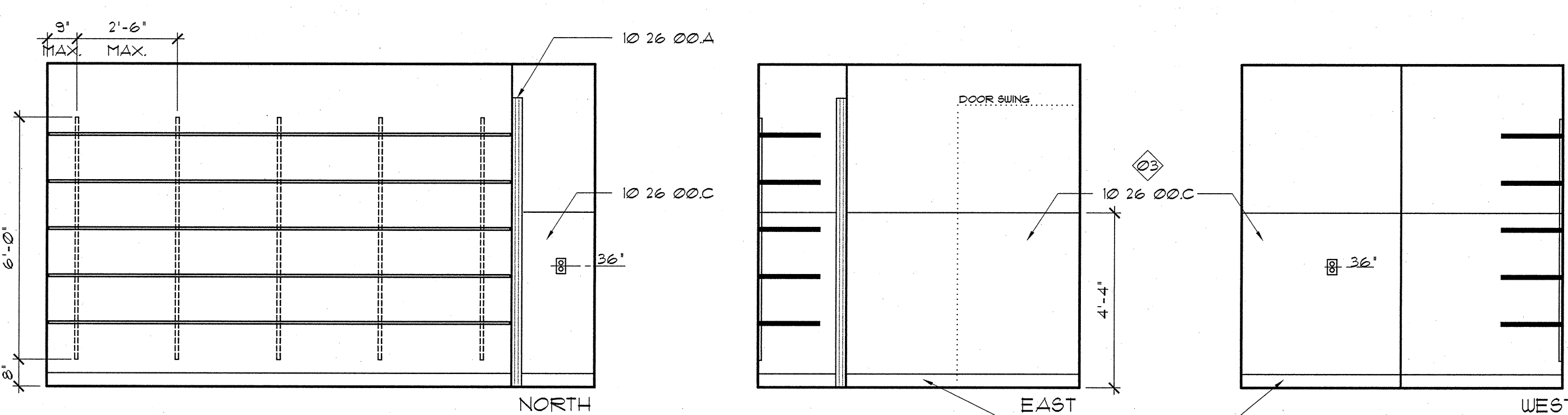
B



STAFF T. 1013

STAFF T. 1033

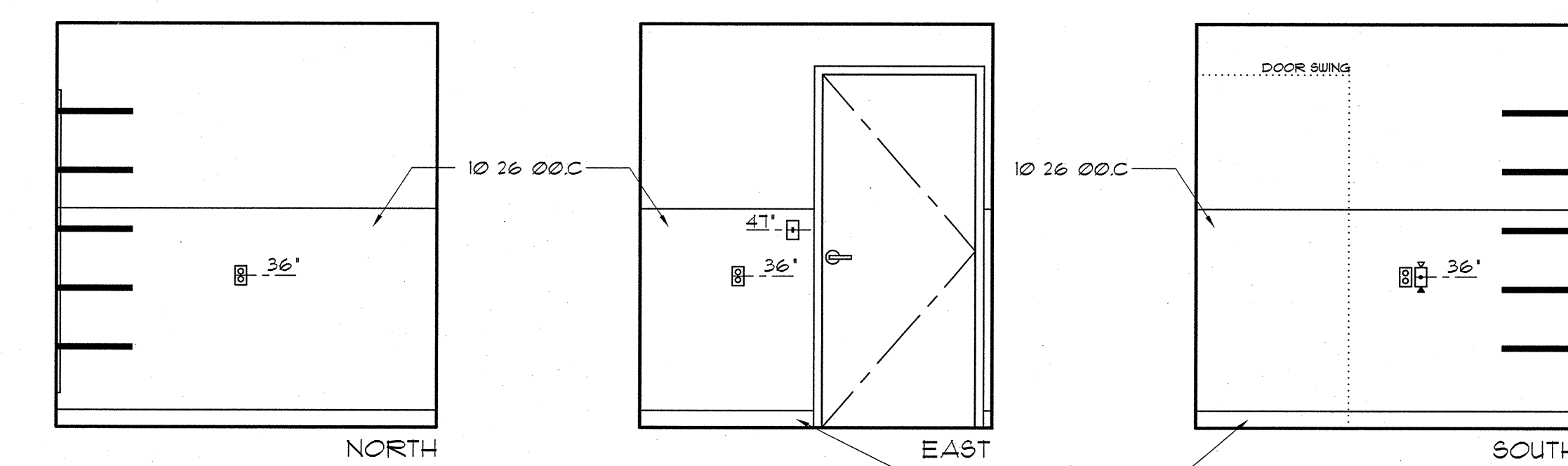
C



STOR. 1042

SUPPORT 1052

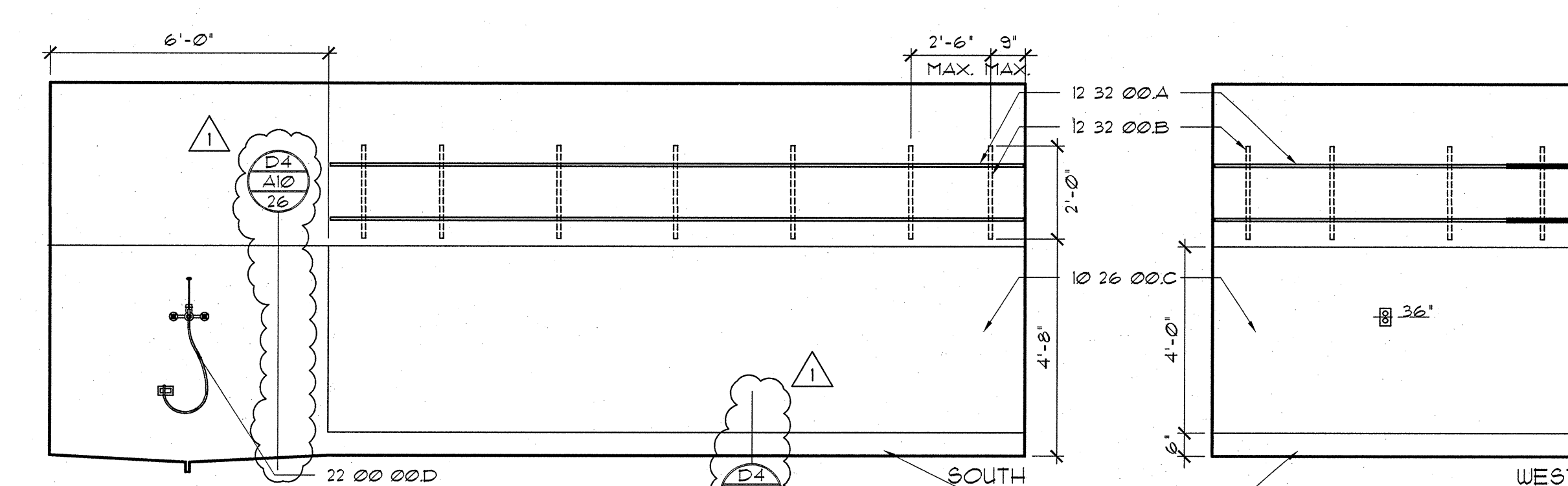
D



STOR. 1181

HCKP. 1089

E



HCKP. 1089

HCKP. E1119

STAFF T. 1013

EQUIP./STOR. 1016

MATERIAL LEGEND

Division 06 Wood, Plastics & Composites

06 16 00 A PEG BOARD, PAINTED FRONT & BACK TO MATCH WALL COLOR. (SIZE AS NOTED)

Division 09 Finishes

09 06 00 A BASE AS SCHEDULED IN SECTION 09 06 00

09 30 00 A TILE AS SCHEDULED IN SECTION 09 06 00

Division 10 Specialties

10 26 00 A CORNER GUARD (1'-2" AFF UNLESS OTHERWISE NOTED)

B WALL PROTECTION PANEL (WPP)

C WALL PROTECTION (WPP-02)

10 28 00 A STAINLESS STEEL GRAB BAR (SIZE AS NOTED)

B OVAL MIRROR

C MOP RACK - 24"

D MOP RACK - 36"

E PAPER TOWEL DISPENSER (PT-02)

F RECESSED TOILET PAPER DISPENSER (TP-01)

Division 12 Furnishings

12 32 00 A 18" DEEP PLASTIC LAMINATE-CLAD ADJUSTABLE SHELVING

B HEAVY-DUTY SHELF SUPPORT BRACKET

Division 22 Plumbing

22 00 00 A WALL-MOUNTED LAVATORY

B WALL-MOUNTED WATER CLOSET

C FLOOR DRAIN

D SERVICE SINK FAUCET

E GOOSENECK & WRIST BLADES

GENERAL NOTES

1. NOT USED.

2. WALL PROTECTION EXTENDS FROM TOP OF BASE TO CEILING.

3. WALL PROTECTION ON ALL WALL THIS ROOM.

4. WALL PROTECTION ON NORTH WALL.

5. EXISTING FIXTURES TO REMAIN.

6. HOLD BACK SHELVING TO LEAVE SPACE FOR MOPS.

LEGEND

POSSIBLE LOCATION FOR GEL DISPENSER (FOIC)	DUPLEX RECEPTACLE W/ EMERGENCY POWER
SOAP DISPENSER (FOIC)	DUPLEX RECEPTACLE
PAPER TOWEL DISPENSER (FOIC)	QUADPLEX RECEPTACLE W/ EMERGENCY POWER
GLOVE DISPENSERS (FOIC)	QUADPLEX RECEPTACLE
SHARPS CONTAINER (FOIC)	MEDICAL GAS OUTLETS: A - MEDICAL AIR O - OXYGEN V - VACUUM
NURSE CALL / FULL	SLIDE
INTERCOM	JUNCTION BOX
CODE CALL	LIGHT SWITCH
EQUIPMENT TAG (SEE SECTION 1100)	TELEPHONE/DATA JACK COMBINED (STANDARD 4 JACKS PER PLATE)
NURSE CALL LIGHT	WALL MOUNTED TELEPHONE
	THERMOSTAT
	24 HR CLOCK
	BATTERY CLOCK
	FIRE STROBE LIGHT

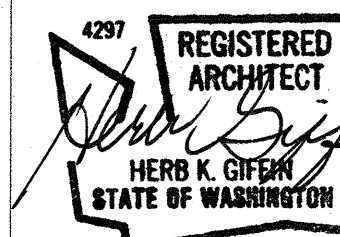
SEC. 12320 CASEWORK LEGEND

(UNLESS OTHERWISE NOTED)

NOT TO SCALE	OPEN CABINET W/ ADJ. SHELVES
	2 ADJ. SHELVES
	UNDERCABINET LIGHT FIXTURE W/P-LAM VALANCE
	UPPER CABINET DOOR WITH FULL
	P-LAM COUNTERTOP AND 4" BACKSPLASH (OR OTHERWISE NOTED)
	BASE CABINET
	DRAWER WITH FULL
	KEYBOARD TRAY FOIC
	OPEN-KNEE SPACE
	LOCK
	HANGING FILE DRAWER - HF
	LATERAL FILE DRAWER - LF

GIFFIN • BOLTE • JURGENS
ARCHITECTS

815 S.W. SECOND AVENUE, PORTLAND, OREGON 97204
(503) 223-0992 www.gbjarch.com FAX (503) 294-3961



EMERGENCY DEPARTMENT & CANCER CENTER EXPANSION

MultiCare

TACOMA, WASHINGTON

CCD 05

01-21-09

Date 09-26-2008

Scale 3/8" = 1'-0"

Drawn By JLC

Job No. 4034

INTERIOR
ELEVATIONS

A9
102