

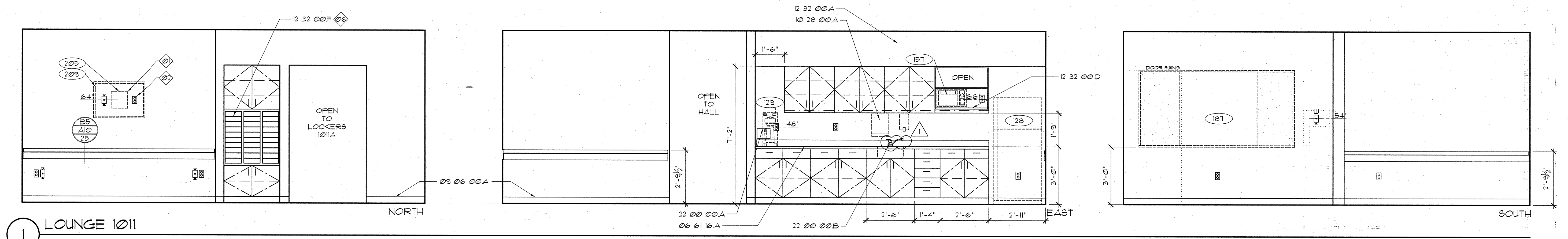
A

B

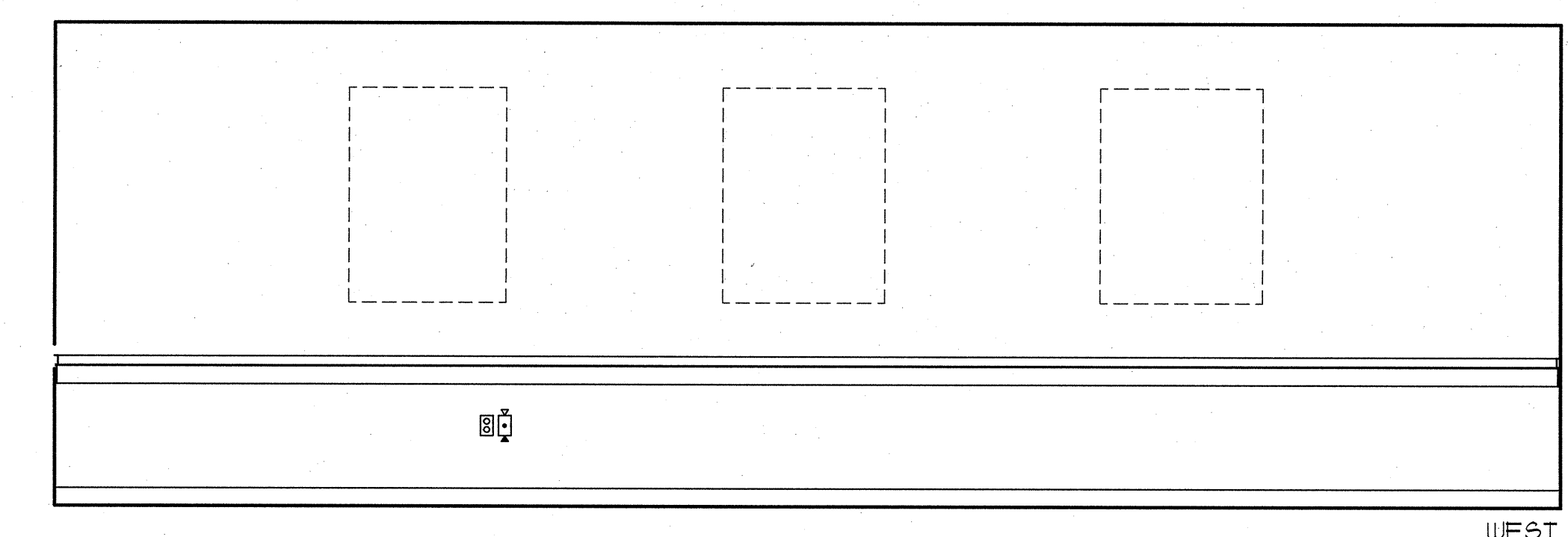
C

D

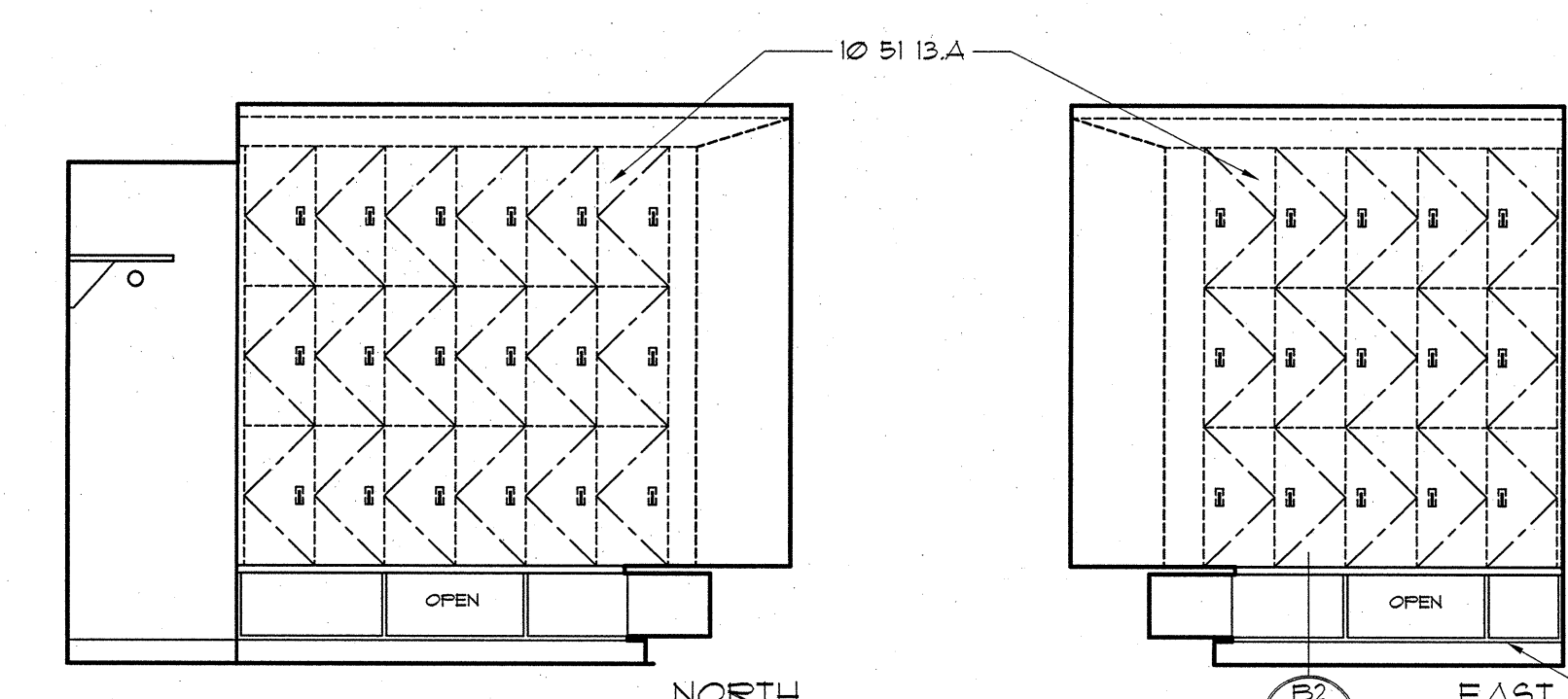
E



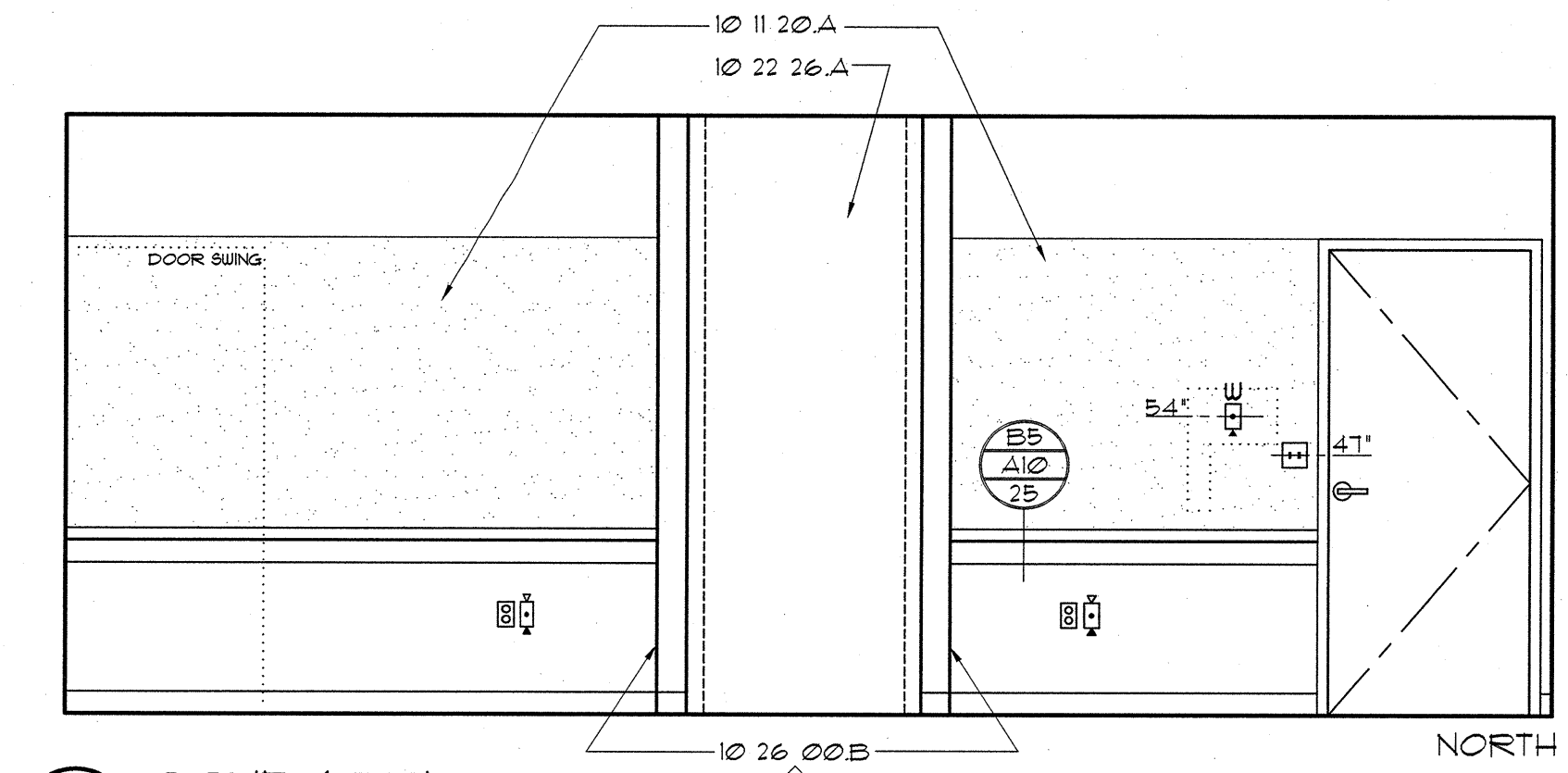
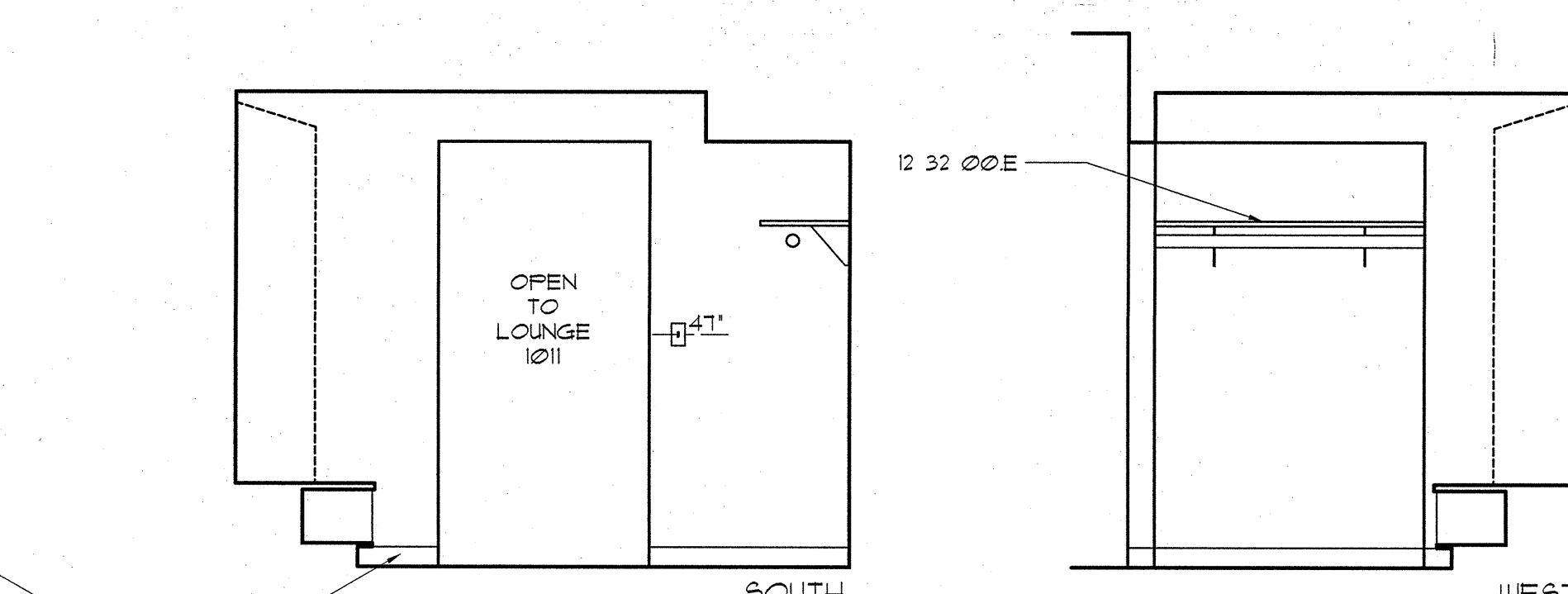
1 LOUNGE 1011



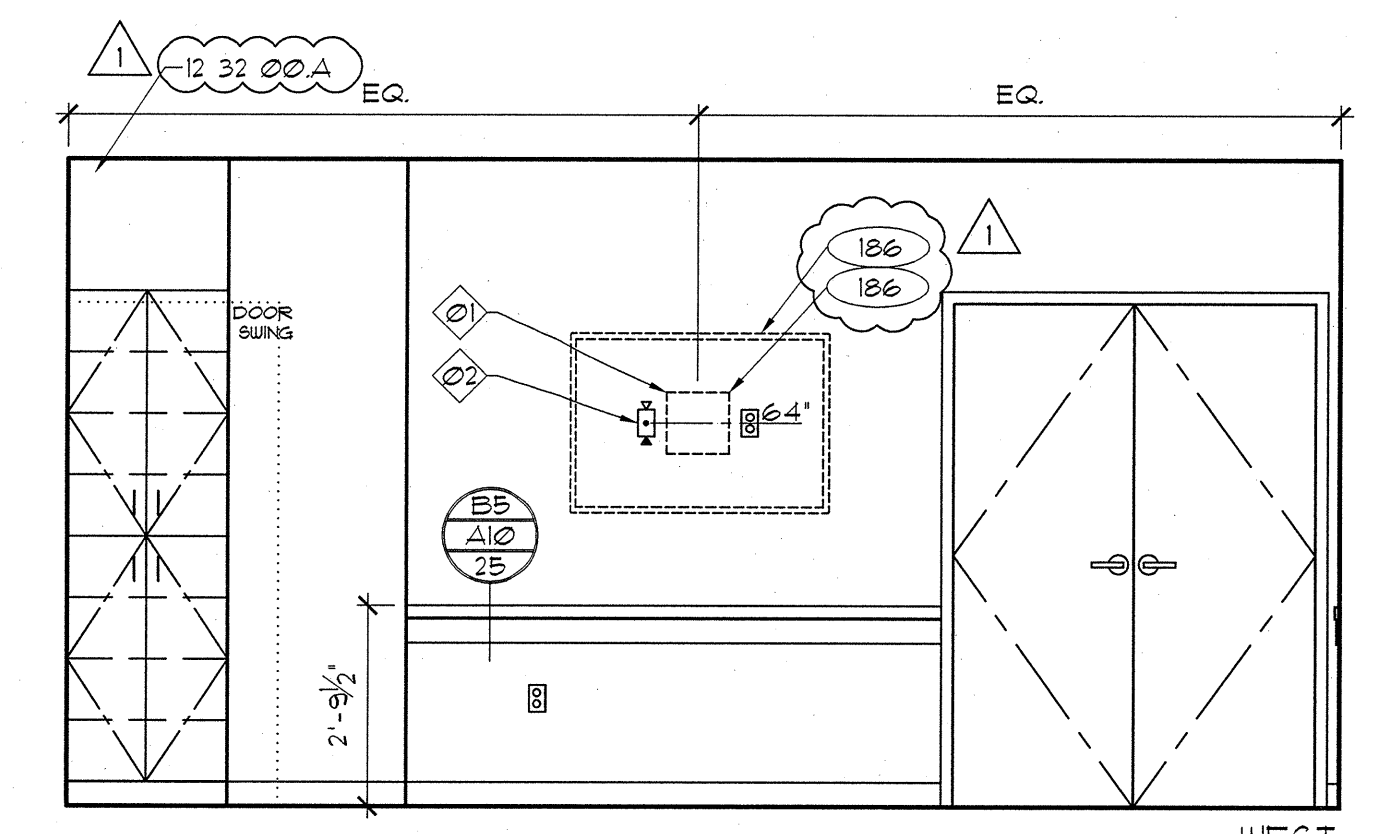
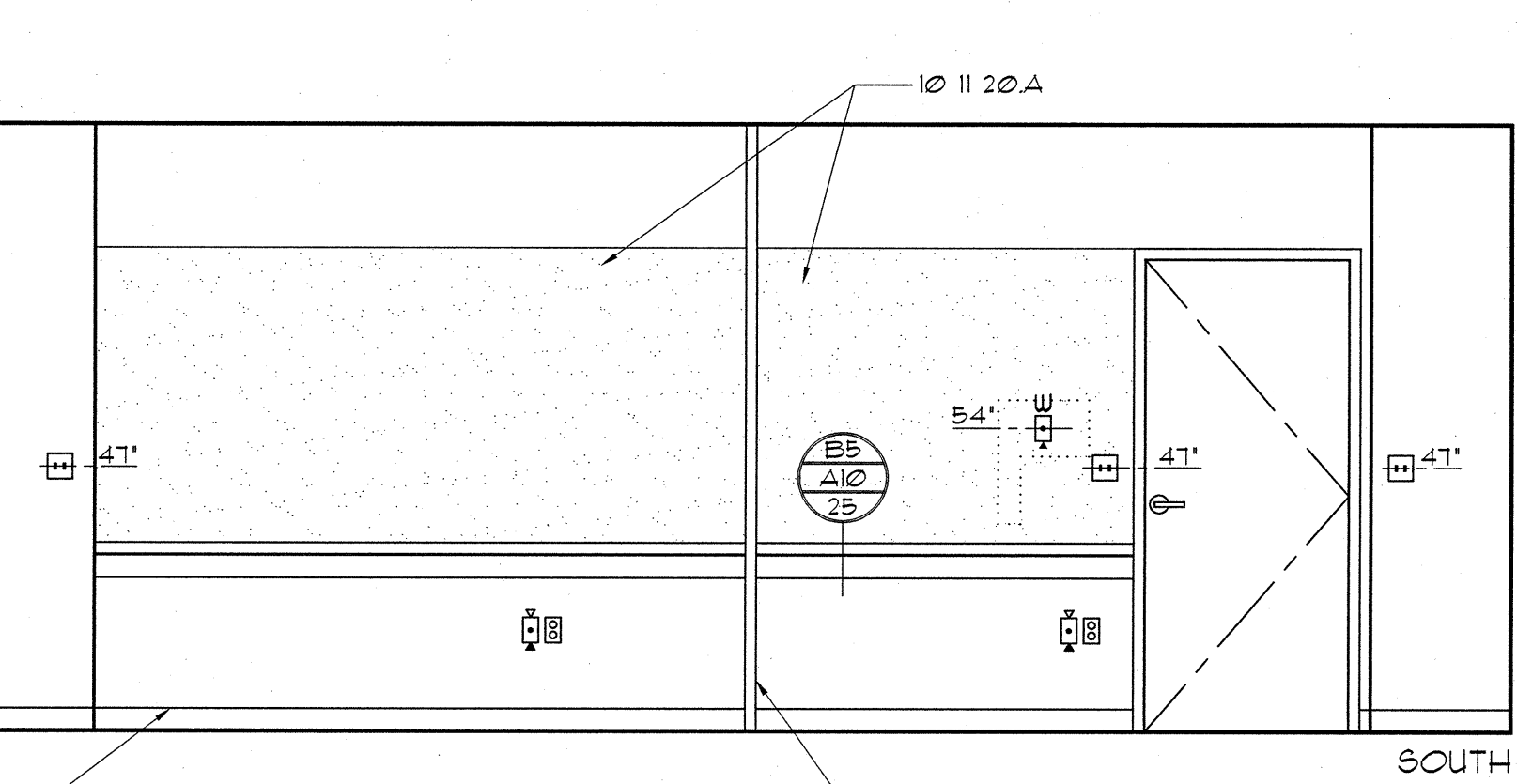
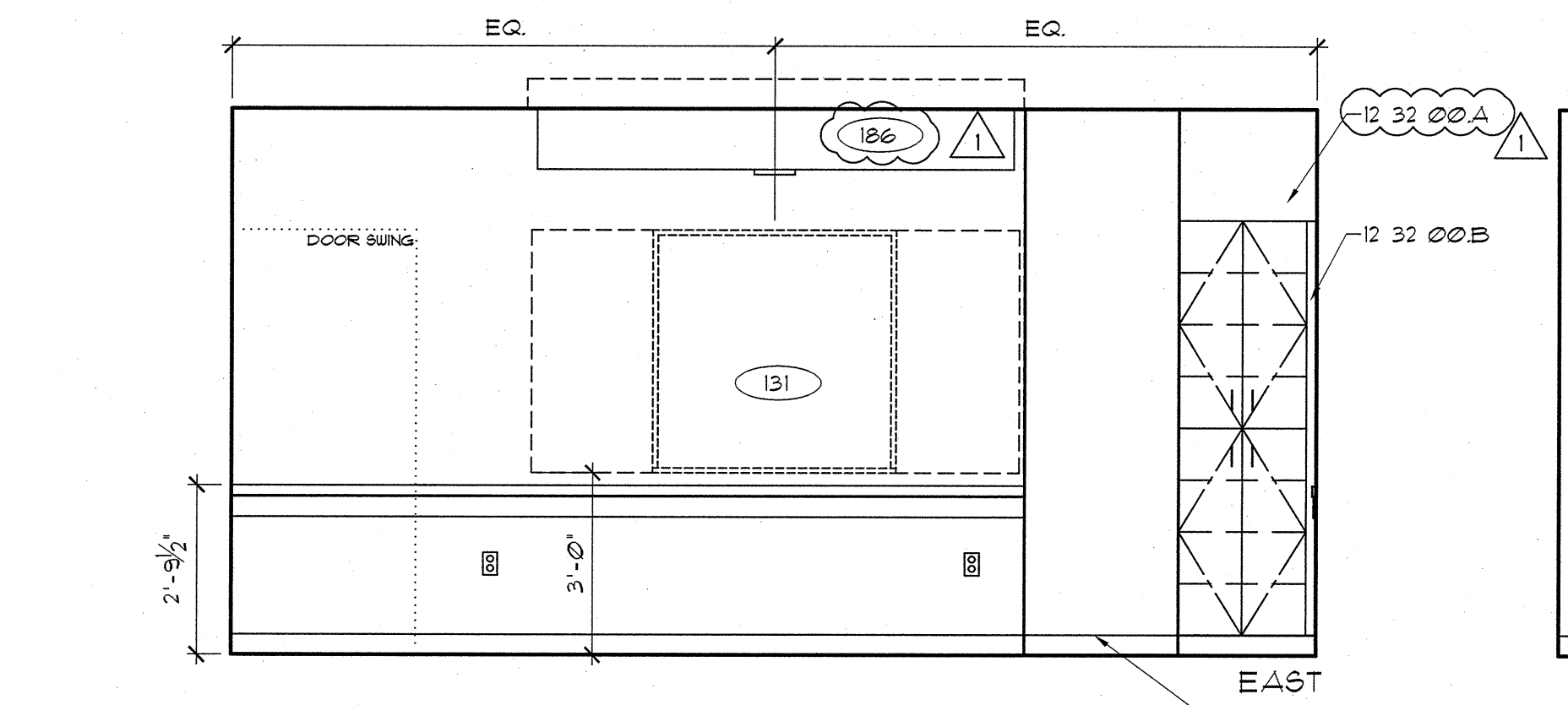
1 LOUNGE 1011



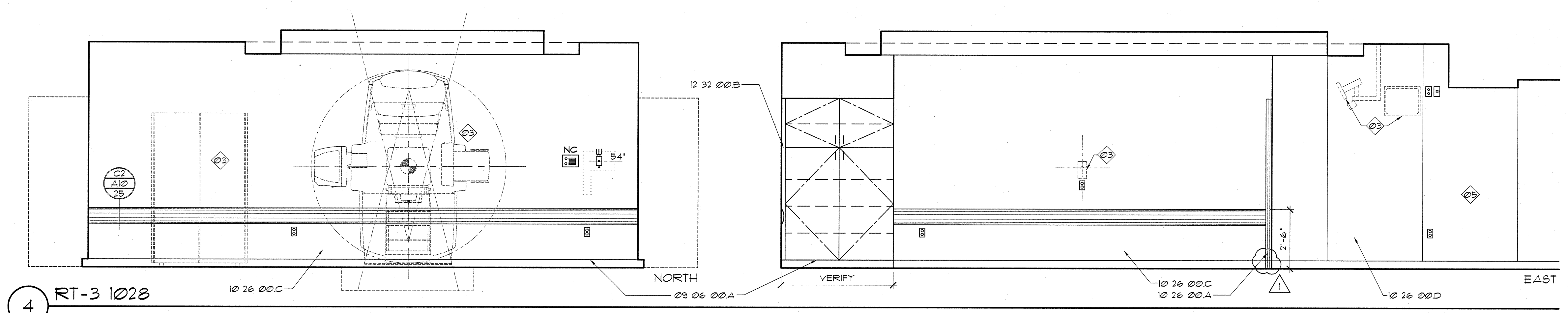
2 LOCKERS 1011A



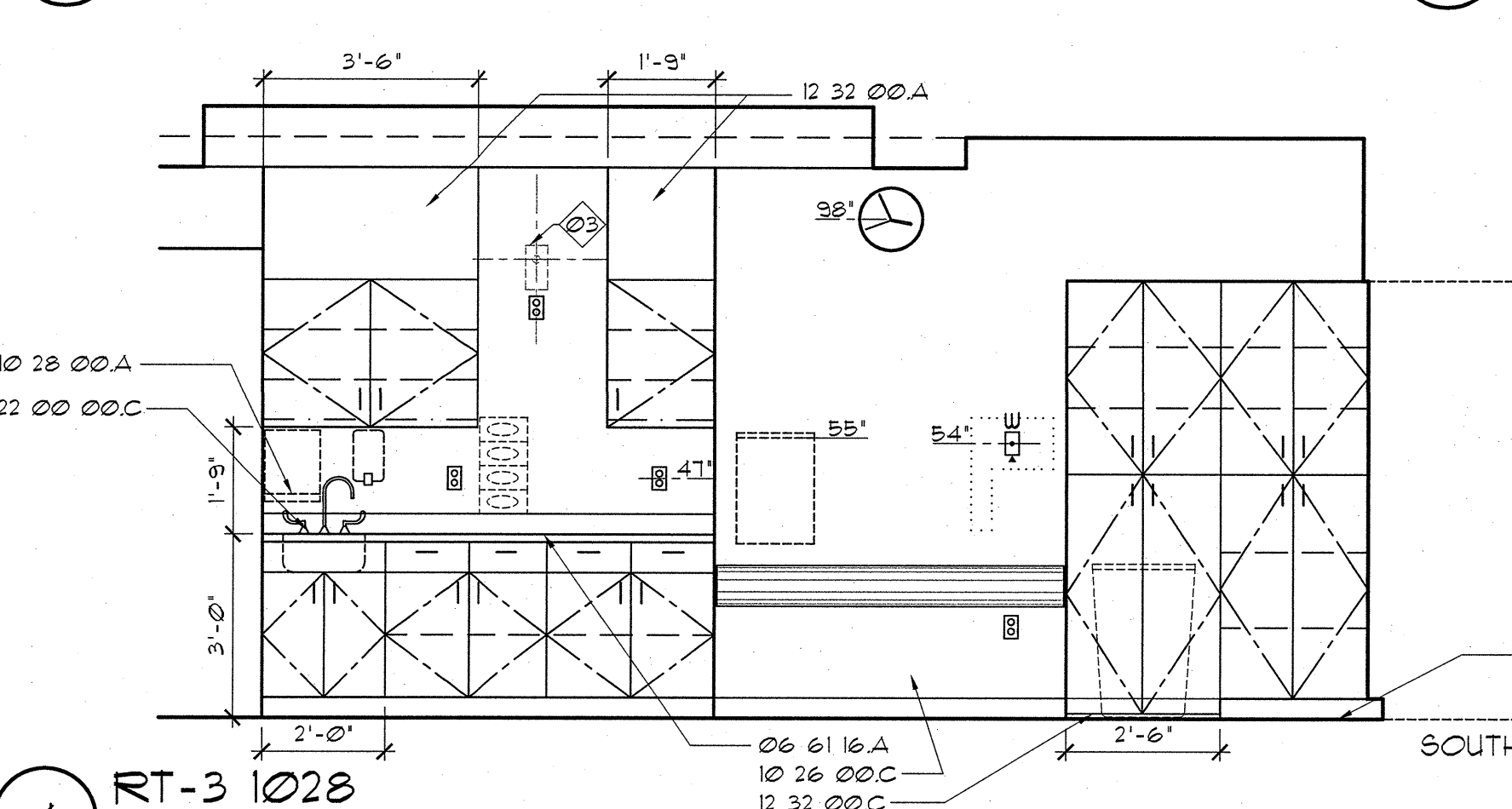
3 CONF. 1037



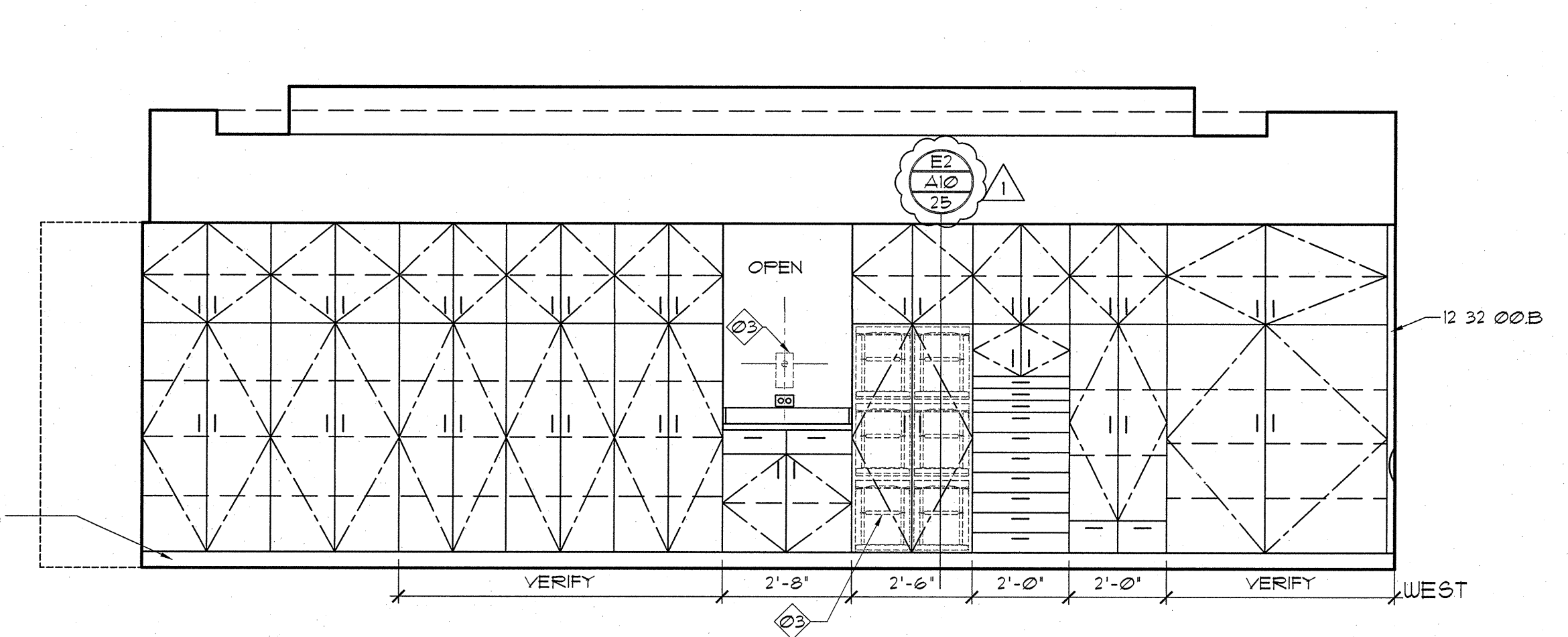
3 CONF. 1037



4 RT-3 1028



4 RT-3 1028



**MATERIAL LEGEND**

**Division 06 Wood, Plastics & Composites**

06 61 16 A SOLID SURFACE COUNTERTOP AND INTEGRAL BACK SPLASH WITH INTEGRAL SINK

**Division 09 Finishes**

09 06 00 A BASE AS SCHEDULED IN SECTION 09 06 00

**Division 10 Specialties**

10 11 20 A TACK BOARD

10 22 26 A FOLDING PANEL PARTITIONS

10 26 00 A CORNER GUARD (1'-2" AFF UNLESS OTHERWISE NOTED)

B WALL PROTECTION (WP-01)

C WALL PROTECTION (WP-02)

D WALL PROTECTION (WP-03)

10 28 00 A PAPER TOWEL DISPENSER (PT-02)

10 31 25 A METAL LOCKERS (ML-02)

**Division 11 Equipment**

11 52 13 A PROJECTION SCREEN

**Division 12 Furnishings**

12 32 00 A PLASTIC LAMINATE-CLAD-SOFT FASCIA-PANEL

B PLASTIC LAMINATE-CLAD FILLER PANEL TO ACCOMMODATE INSTALL OF BUMPER/ CHAIR RAIL. VERIFY CASEWORK FLOOR WILL OPEN 90 DEGREES BASE DOOR TO HAVE 1" GAP AT FLOOR

C PLASTIC LAMINATE-CLAD CASEWORK WITH NO BASE DOOR TO HAVE 1" GAP AT FLOOR

D 16" DEEP PLASTIC LAMINATE-CLAD SHELF FOR MICROWAVE WITH 1-1/2" RADIUS CORNERS

E 12" DEEP PLASTIC LAMINATE-CLAD SHELF WITH ROD AND SHELF/ROD BRACKETS. SEE DETAIL E6/A10/25

F ACRYLIC HORIZONTAL FORM SLOTS

**Division 22 Plumbing**

22 00 00 A RECESSED CONNECTION BOX FOR COFFEE MACHINE

B SINGLE LEVER FAUCET

C GOOSENECK & WRIST BLADES

**GENERAL NOTES**

01 INSTALL PER MANUFACTURER'S METAL STUD KIT INSTRUCTIONS.

02 COORDINATE LOCATION OF POWER AND DATA J-BOX WITH FINAL LOCATION OF TV BRACKET. POWER AND DATA J-BOXES TO BE PLACED BEHIND MONITOR BUT ASSURED THAT THE DATA AND POWER CONNECTION CAN BE MADE WITHOUT SHARP BENDS IN CONNECTOR LEADS.

03 VENDOR INSTALLED EQUIPMENT.

04 WALL PROTECTION ON SIDE WALL, FULL HEIGHT.

05 WALL PROTECTION EXTENDS FLOOR TO CEILING.

06 MAIL SLOTS TO BE MIN. 10" x 3".

**LEGEND**

POSSIBLE LOCATION FOR GEL DISPENSER (FOIC)

SOAP DISPENSER (FOIC)

PAPER TOWEL DISPENSER (FOIC)

GLOVE DISPENSERS (FOIC)

SHARPS CONTAINER (FOIC)

NURSE CALL / FULL

INTERCOM

CODE CALL

EQUIPMENT TAG (SEE SECTION 1100)

NURSE CALL LIGHT

DUPLEX RECEPTACLE W/ EMERGENCY POWER

DUPLEX RECEPTACLE

QUADPLEX RECEPTACLE W/ EMERGENCY POWER

QUADPLEX RECEPTACLE

MEDICAL GAS OUTLETS:  
A - MEDICAL AIR  
O - OXYGEN  
V - VACUUM

SLIDE

JUNCTION BOX

LIGHT SWITCH

TELEPHONE/DATA JACK COMBINED (STANDARD 4 JACKS PER PLATE)

WALL MOUNTED TELEPHONE

THERMOSTAT

24 HR CLOCK

BATTERY CLOCK

FIRE STROBE LIGHT

**SEC. 12320 CASEWORK LEGEND**  
(UNLESS OTHERWISE NOTED)

NOT TO SCALE

OPEN CABINET W/ ADJ. SHELVES

2 ADJ. SHELVES

UNDERCABINET LIGHT FIXTURE W/ P-LAM VALANCE

UPPER CABINET DOOR WITH FULL

P-LAM COUNTERTOP AND 4" BACKSPLASH (OR OTHERWISE NOTED)

BASE CABINET

DRAWER WITH FULL

KEYBOARD TRAY F.O.I.O.

OPEN-KNEE SPACE

LOCK

HANGING FILE DRAWER - HF

LATERAL FILE DRAWER - LF