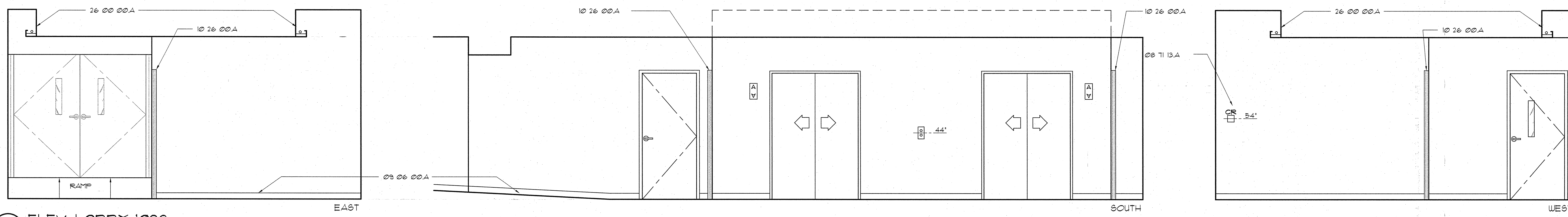
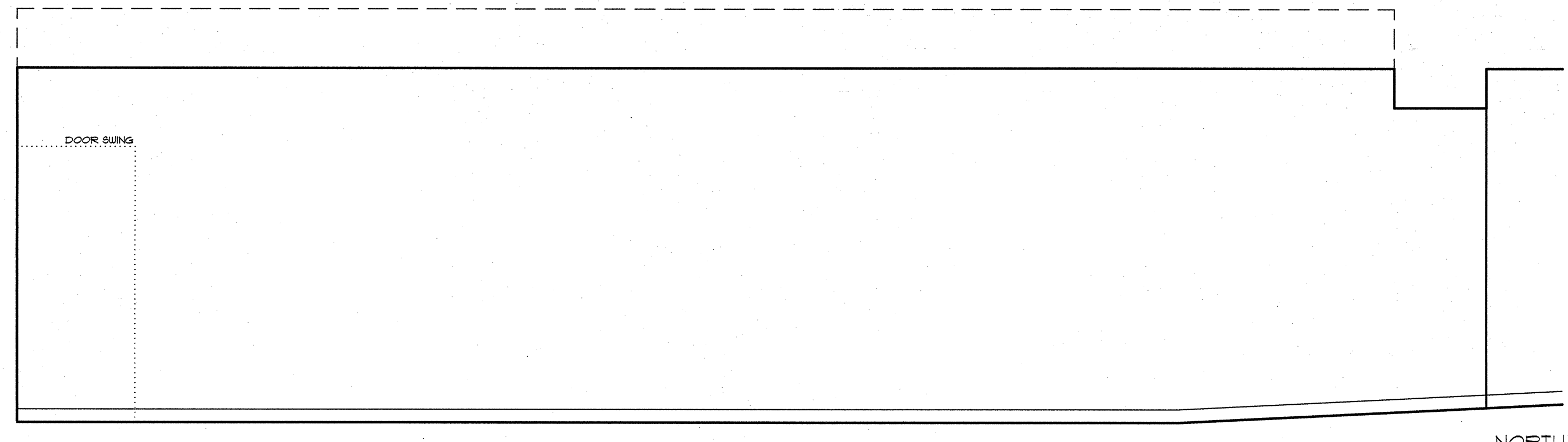


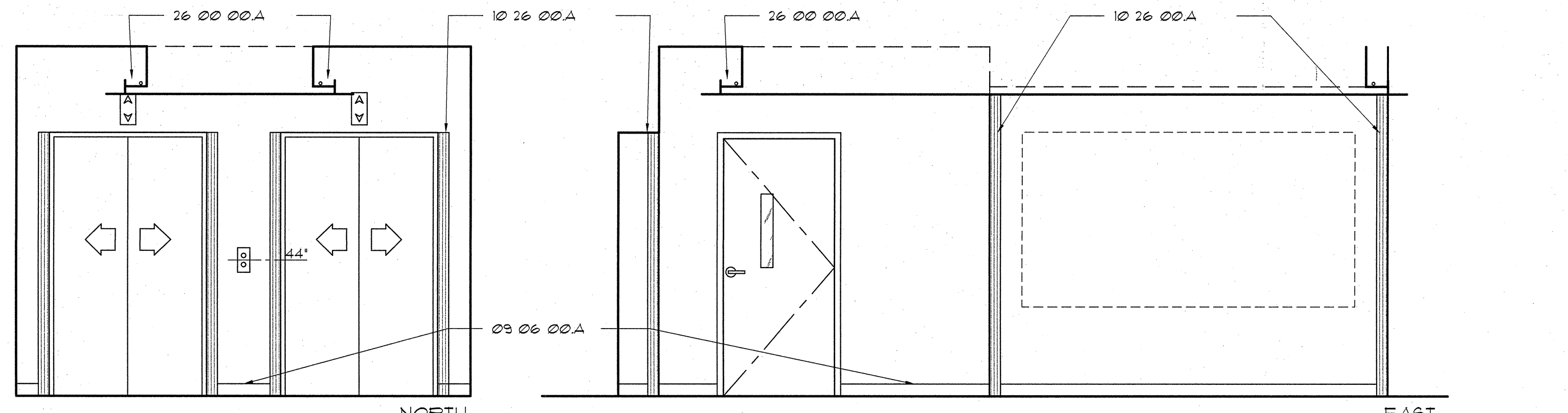
A  
B  
C  
D  
E



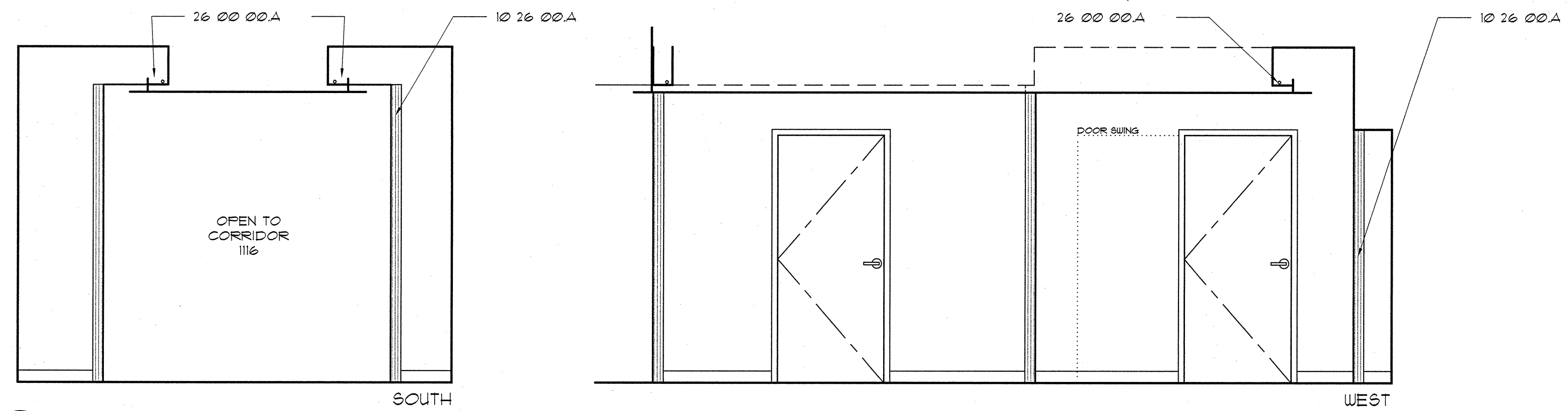
1 ELEV. LOBBY 1038



1 ELEV. LOBBY 1038



2 ELEV. LOBBY E1121



2 ELEV. LOBBY E1121

- MATERIAL LEGEND**
- Division 08 Openings
  - 08 11 13.A CARD READER
  - Division 09 Finishes
  - 09 06 00.A BASE AS SCHEDULED IN SECTION 09 06 00
  - Division 10 Specialties
  - 10 26 00.A CORNER GUARD (1'-2" AFF UNLESS OTHERWISE NOTED)
  - Division 26 Electrical
  - 26 00 00.A COVE LIGHT AS SCHEDULED

- LEGEND**
- |  |  |  |   |
|--|--|--|---|
|  | POSSIBLE LOCATION FOR GEL DISPENSER (FOIC) |  | DUPLEX RECEPTACLE W/ EMERGENCY POWER                                |
|  | SOAP DISPENSER (FOIC)                      |  | DUPLEX RECEPTACLE   |
|  | PAPER TOWEL DISPENSER (FOIC)               |  | QUADPLEX RECEPTACLE W/ EMERGENCY POWER                              |
|  | GLOVE DISPENSERS (FOIC)                    |  | QUADPLEX RECEPTACLE   |
|  | SHARPS CONTAINER (FOIC)                    |  | MEDICAL GAS OUTLETS:<br>A - MEDICAL AIR<br>O - OXYGEN<br>V - VACUUM |
|  | NURSE CALL / PULL                          |  | SLIDE   |
|  | INTERCOM                                   |  | JUNCTION BOX  |
|  | CODE CALL                                  |  | LIGHT SWITCH  |
|  | EQUIPMENT TAG (SEE SECTION 11100)          |  | TELEPHONE/DATA JACK COMBINED (STANDARD 4 JACKS PER PLATE)           |
|  | NURSE CALL LIGHT                           |  | WALL MOUNTED TELEPHONE  |
|  | NURSE CALL LIGHT                           |  | THERMOSTAT  |
|  | NURSE CALL LIGHT                           |  | 24 HR CLOCK   |
|  | NURSE CALL LIGHT                           |  | BATTERY CLOCK   |
|  | NURSE CALL LIGHT                           |  | FIRE STROBE LIGHT   |

