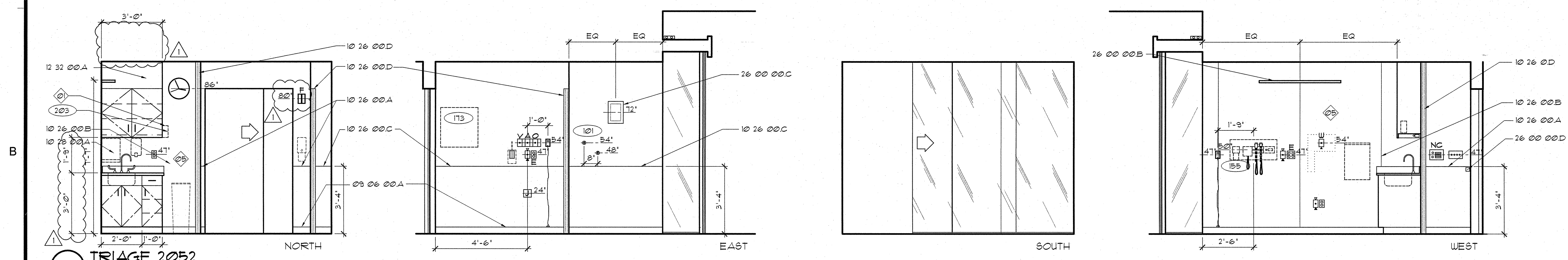
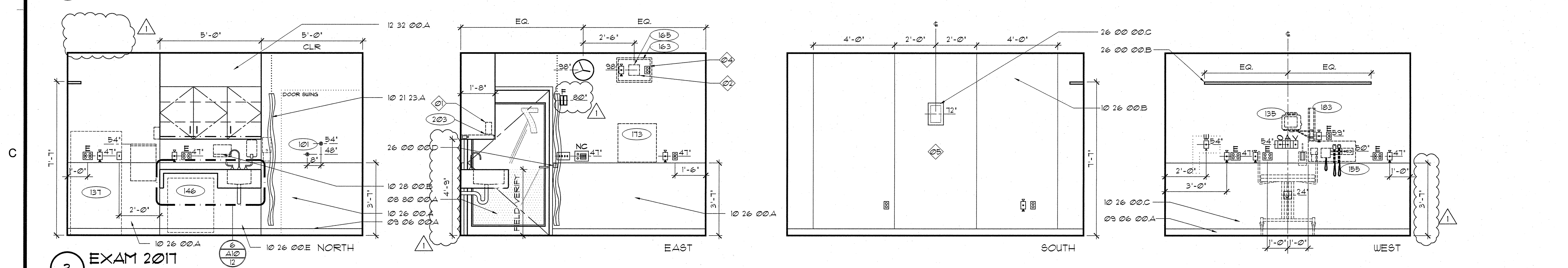


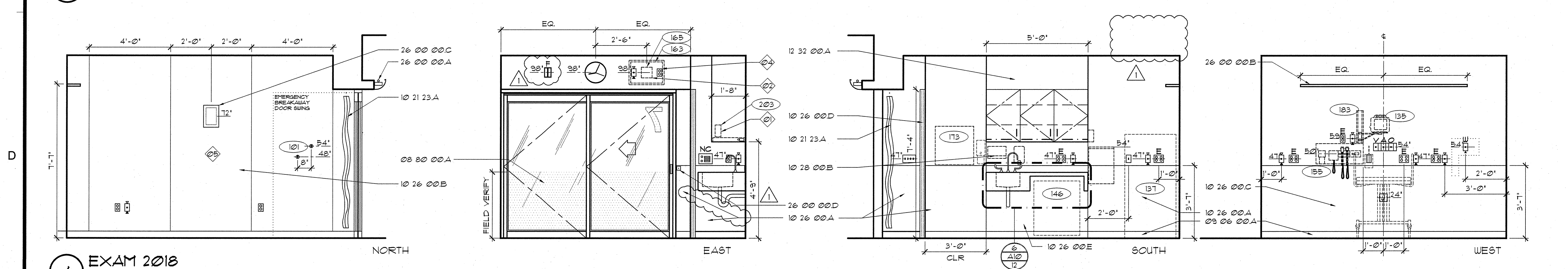
1 TRIAGE 2048
SIM OFF 2062



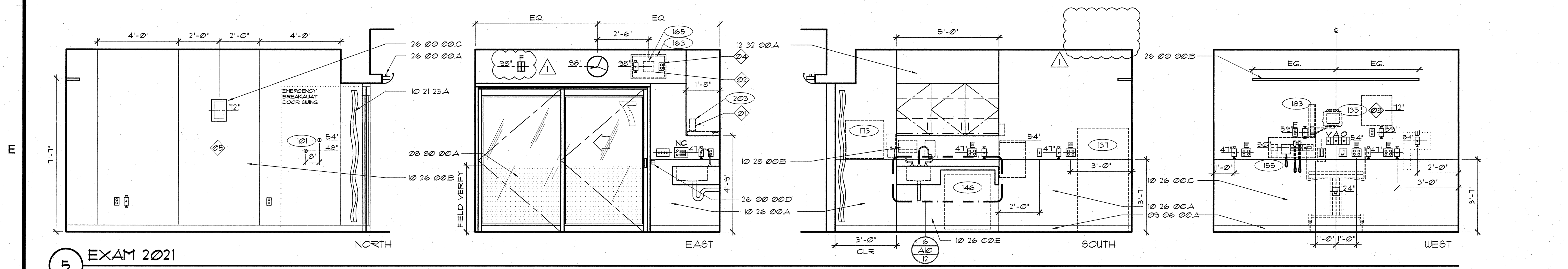
2 TRIAGE 2052
SIM OFF 2059



3 EXAM 2017



4 EXAM 2018
SIM 2016, 2088, 2143



5 EXAM 2021
SIM 2025, 2071, 2077, 2089, 2095, 2165, 2166

MATERIAL LEGEND

- Division 08 Openings**
08 00 00.A CUSTOM FILM AS SCHEDULED IN SECTION 09 06 10
- Division 09 Finishes**
09 06 00.A BASE AS SCHEDULED IN SECTION 09 06 00
- Division 10 Specialties**
10 21 23.A CUBICLE CURTAIN AND TRACK
10 26 00.A WALL PROTECTION (WP-01)
B WALL PROTECTION (WP-04)
C WALL PROTECTION PANEL (WPP)
D CORNER GUARD (1'-2" AFF UNLESS OTHERWISE NOTED)
E WALL PROTECTION (WP-06)
10 28 00.A PAPER TOWEL DISPENSER (PT-01)
B PAPER TOWEL DISPENSER (PT-02)
- Division 12 Furnishings**
12 32 00.A PLASTIC LAMINATE-CLAD SOFFIT FASCIA PANEL
- Division 26 Electrical**
26 00 00.A COVE LIGHT AS SCHEDULED
B WALL-MOUNTED LIGHT FIXTURE
C WALL SCONCE
D PANIC BUTTON

GENERAL NOTES

- 1 EQUIPMENT ITEM MOUNTED TO SIDE OF CASEWORK
- 2 INSTALL PER MANUFACTURER'S METAL STUD KIT INSTRUCTIONS
- 3 DATA CAPTURE WALL-MOUNTED W/DEDICATED DUPLEX OUTLET AND DATA BELOW. ROOM 2089 ONLY
- 4 COORDINATE LOCATION OF POWER AND DATA J-BOX WITH FINAL LOCATION OF TV BRACKET. POWER AND DATA J-BOXES TO BE PLACED BEHIND MONITOR, BUT ASSURED THAT THE DATA AND POWER CONNECTION CAN BE MADE WITHOUT SHARP BENDS IN CONNECTOR LEADS.
- 5 WALL PROTECTION EXTENDS FULL HEIGHT

LEGEND

- POSSIBLE LOCATION FOR GEL DISPENSER (FOIC)
- SOAP DISPENSER (FOIC)
- PAPER TOWEL DISPENSER (FOIC)
- GLOVE DISPENSERS (FOIC)
- SHARPS CONTAINER (FOIC)
- NURSE CALL / FULL
- INTERCOM
- CODE CALL
- EQUIPMENT TAG (SEE SECTION 11.00)
- NURSE CALL LIGHT
- DUPLEX RECEPTACLE W/ EMERGENCY POWER
- DUPLEX RECEPTACLE
- QUADPLEX RECEPTACLE W/ EMERGENCY POWER
- QUADPLEX RECEPTACLE
- MEDICAL GAS OUTLETS:
A - MEDICAL AIR
O - OXYGEN
V - VACUUM
- SLIDE
- JUNCTION BOX
- LIGHT SWITCH
- TELEPHONE/DATA JACK COMBINED (STANDARD 4 JACKS PER PLATE)
- WALL MOUNTED TELEPHONE
- THERMOSTAT
- 24 HR CLOCK
- BATTERY CLOCK
- FIRE STROBE LIGHT

SEC. 12320 CASEWORK LEGEND
(UNLESS OTHERWISE NOTED)

- OPEN CABINET W/ ADJ. SHELVES
- 2 ADJ. SHELVES
- UNDERCABINET LIGHT FIXTURE W/P-LAM VALANCE
- UPPER CABINET DOOR WITH FULL
- P-LAM COUNTERTOP AND 4" BACKSPASH (OR OTHERWISE NOTED)
- BASE CABINET
- DRAWER WITH FULL
- KEYBOARD TRAY F.O.I.O.
- OPEN-KNEE SPACE
- LOCK
- HANGING FILE DRAWER = HF
- LATERAL FILE DRAWER = LF